

US101: SE 16th – SE 36th Street (Lincoln City))Project

Community Advisory Committee

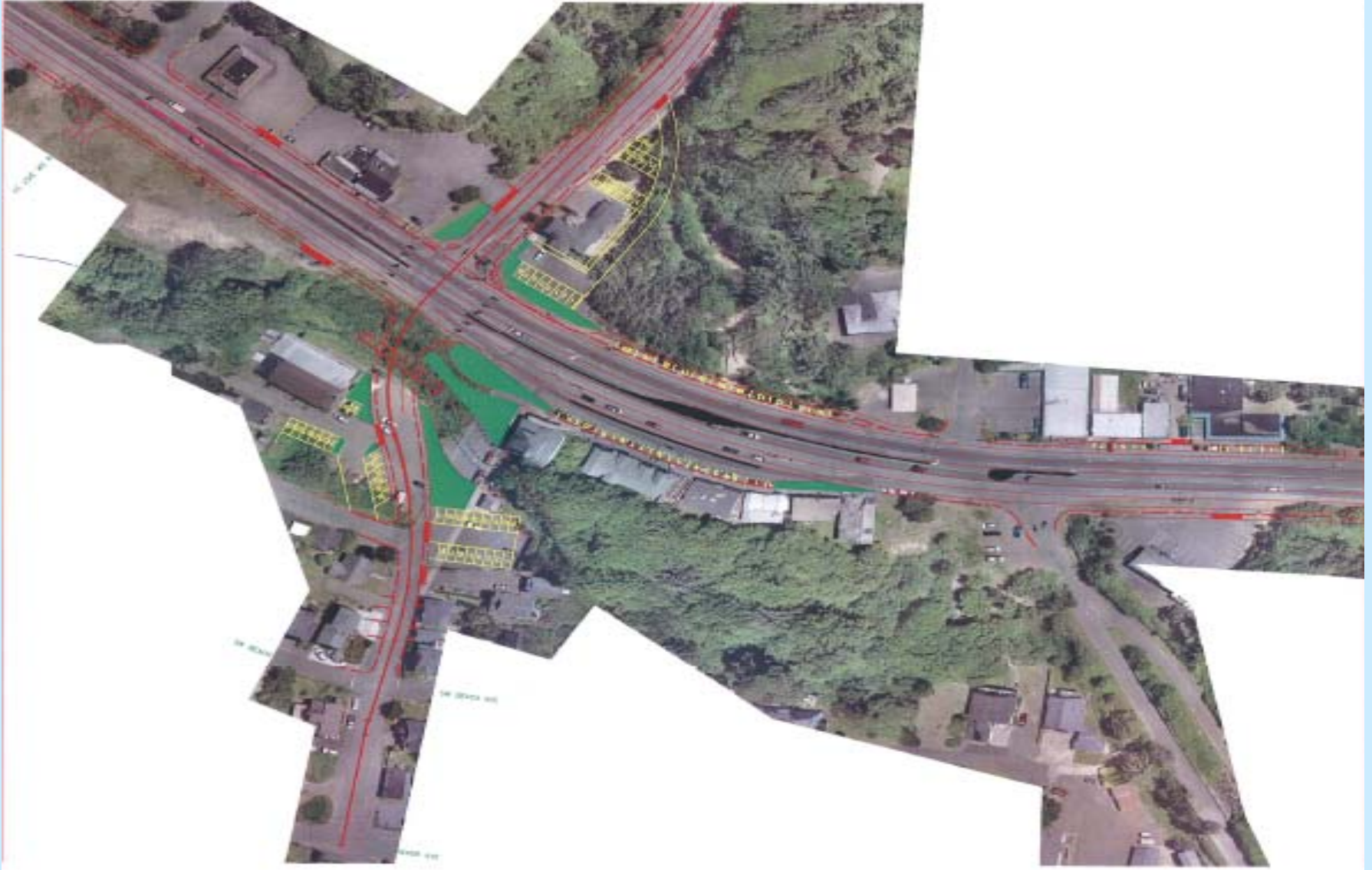
May 14, 2008 Meeting



Realignment Concepts

- Three Conceptual Realignments
 - North
 - South
 - North Skewed
- Each concept assumes there will be a signal in the future, if not at the time of construction.
- Each concept has an option for a parking strip or a large sidewalk plaza in front of the Nelscott strip.

North Alignment



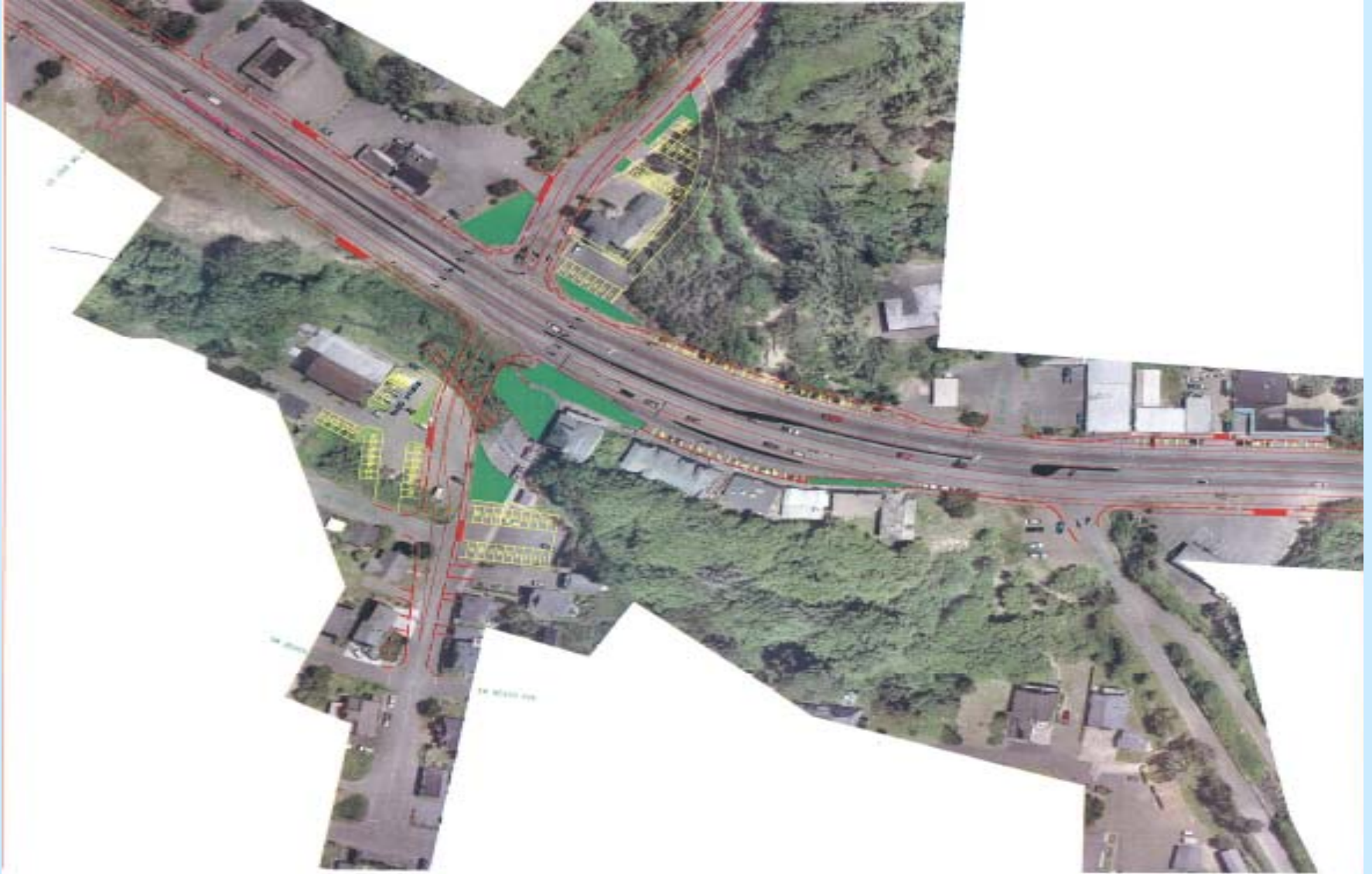
South Alignment with Cul-de-sac



South Alignment with Jug Handle



North “Skewed” Alignment



Next Steps

- Open House June 17, 2008 6-8 pm
 - The purpose of the Open House is to obtain community feedback on each alternative to help identify the preferred alternative.
- City Council & Staff – we will report out the comments received during the Open House to City Council and Staff.
- Project Team works through a decision matrix to identify the preferred alternative.
 - The team will examine cost, environmental impacts, community impacts & input and constructability.

Decision Matrix Example

<u>Impacts</u>	<u>North Alignment</u>	<u>South Alignment</u>	<u>Skewed Alignment</u>
Environmental			
Historic			
Wetlands			
Archeological			
Biological			
Utilities			
Right of Way			
Local			
Parking			
Property			
Pedestrians			
Access to Nelscott Businesses			
Constructability			
Cost			

The End

