



Work begins  
this summer.

Go to  
[www.ODOTproject.info](http://www.ODOTproject.info)  
to keep up with road  
construction in your  
county.



Patching roller South of Canyon Creek Pass,  
Pacific Hwy near Azalea, August, 6 1940



ODOT Region 2 | 455 Airport Rd., Bldg. B | Salem, OR 97301

## Preservation Project

Paving U.S. 20 (Corvallis—Newport Highway)

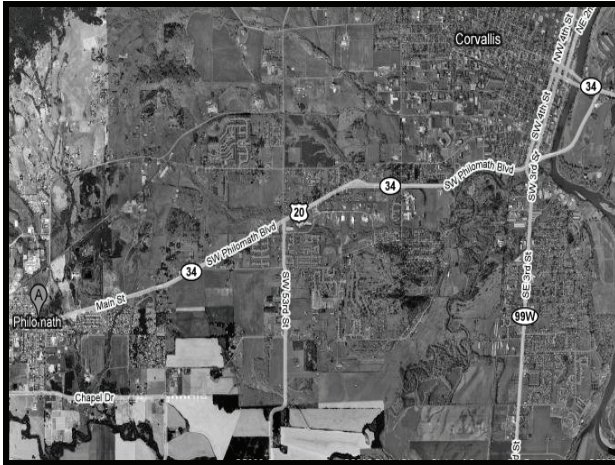


U.S. 20: Newton  
Creek (Philomath)  
to 99W (Corvallis)



Construction Updates for your County

[www.ODOTproject.info](http://www.ODOTproject.info)



Project limits: mile post 51.31 to mile post 55.75.

Paving begins early this summer and will cause delays on U.S. 20.

Traffic will be reduced to one lane with flaggers during the paving operations.

Construction crews will work at night to reduce delays and impacts to area traffic.

## Preserving Our Roads

Preservation projects maintain existing roads by rehabilitating damaged pavement and upgrading sub-standard roadway features.

This project will grind out the existing roadway and then inlay new asphalt, repaving U.S. 20 from the east end of Philomath to Highway 99W over-crossing in Corvallis.

There is a no-work zone between SW 53rd Street, and just east of SW Technology Loop where newer paving already exists.

The project will also make guardrail and ADA ramp improvements within the project area.



Paving Crew during WWII, Marshfield, Oregon, September, 1942.

## Questions?

For more information contact:

Jerry Wolcott, Project Leader, (541) 757-4164

[jerry.o.wolcott@odot.state.or.us](mailto:jerry.o.wolcott@odot.state.or.us)