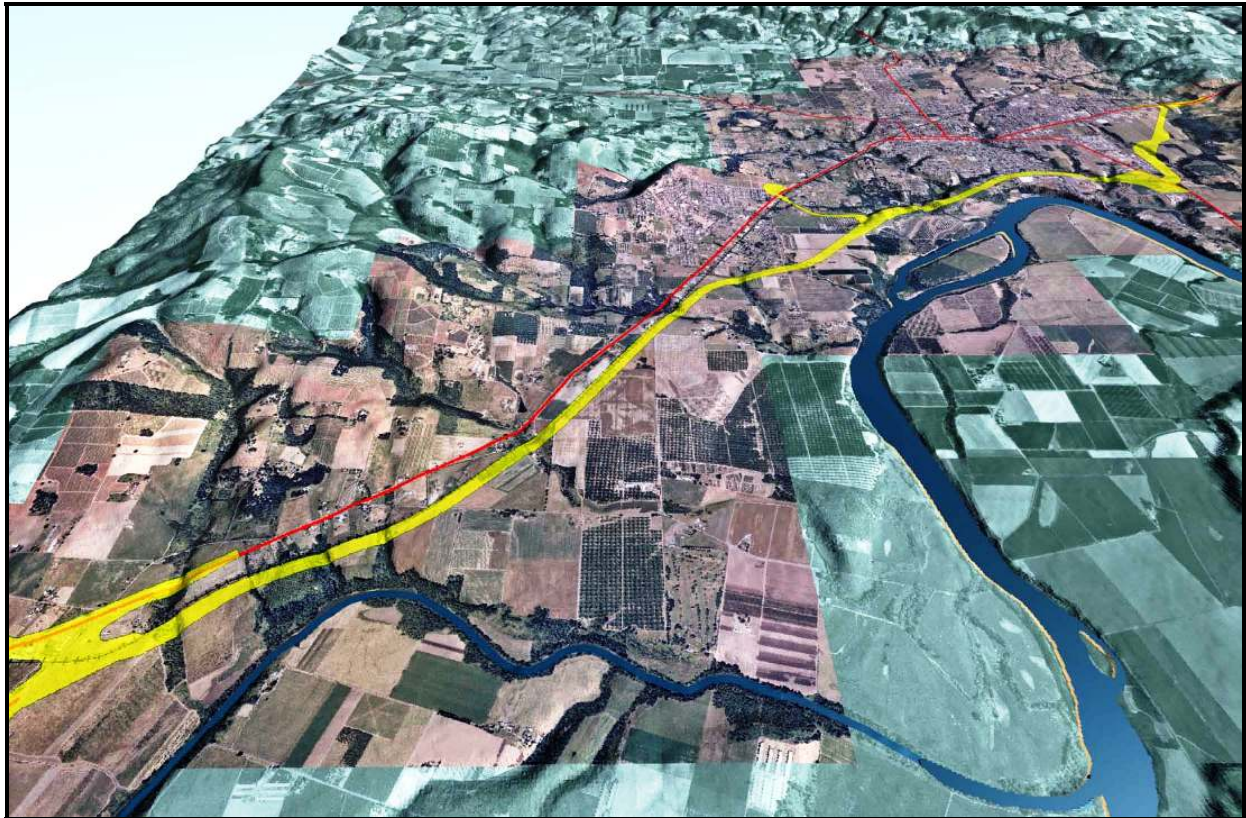




Bypass Element Location (Tier 1) Final Environmental Impact Statement



Federal Highway Administration
and

June 2005

Oregon Department of Transportation

GOING METRIC

In accordance with recent Executive Orders and Secretary of Commerce direction, Federal Highway Administration and supporting agency project plans were to be converted to metric units by 2000. However, Oregon Department of Transportation is now converting back to English units.

From English Units	To Metric Units	Multiply By
Mile (mi)	kilometer (km)	1.609
foot (ft)	meter (m)	0.3048
miles per hour (mph)	kilometers per hour (km/h)	1.609
cubic yard (cy)	cubic meter (m ³)	0.7646
acre (ac)	hectare (ha)	0.4047

ALTERNATIVE FORMAT AVAILABILITY

In compliance with the Americans with Disabilities Act, alternative formats of this document will be made available upon request.

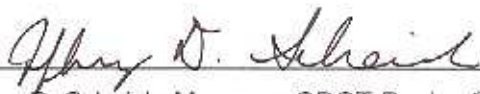
This page intentionally left blank.




**Newberg-Dundee Bypass
Yamhill County
Key No. 9328
Bypass Element
Location (Tier 1)
Final Environmental Impact Statement
FHWA-OR-EIS-2002-1-F**

Submitted pursuant to 42 U.S.C. Section 4332(2)(C), 40 CFR Parts 1500-1508,
49 U.S.C. Section 303, and 23 CFR Part 771

U.S. Department of Transportation, Federal Highway Administration
and
Oregon Department of Transportation, Technical Services Branch




Jeffrey D. Scheick, Manager, ODOT Region 2



Date



David O. Cox, Division Administrator, Federal Highway Administration



Date

The following persons may be contacted for additional information:

Alan J. Fox
Project Leader
ODOT Region 2
455 Airport Rd. SE Bldg. B
Salem, OR 97301-5397
(503) 986-2681

Mark Wigg
Senior Project Manager, Env. Unit
ODOT Region 2 Tech Center
455 Airport Rd. SE Bldg. B
Salem, OR 97301-5397
(503) 986-6928

Elton Chang
Environmental Coordinator
Federal Highway Administration
530 Center Street N.E, Suite 100
Salem, Oregon 97301
(503) 587-4710

Abstract:

The Newberg Dundee Transportation Improvement Project (NDTIP) integrates several related transportation efforts in an effort to relieve congestion problems in Yamhill County along the Oregon 99W corridor. The NDTIP includes strategies to develop a balanced transportation system that includes roadway, multimodal, and land use elements. Transportation analysis conducted as part of the Location Draft Environmental Impact Statement (LDEIS) indicated that a state highway bypass is needed to solve congestion problems on Oregon 99W.

The Preferred Alternative addressed in this document, the Location Final Environmental Impact Statement (LFEIS, Tier 1), is the location of a corridor at least 330 feet wide recommended for the Bypass project. During the next phase of the project, design alternatives for the Bypass facility will be compared, additional National Environmental Policy Act analysis will be conducted, and a design-level document will be prepared. The design-level document will be commensurate with the scope and impacts of the proposed Bypass facility.

The identified corridor passes through both urban and rural lands. Primary impacts to the natural environment include fish and wildlife habitat, wetlands, and farmlands. Primary built environment impacts include residential and business displacements, noise, historic and cultural resources, and land use. Preferred Alternative Modified 3J extends for approximately 11 miles from its eastern terminus east of Newberg in the Rex Hill area to its western terminus where Oregon 99W intersects with Oregon 18 (McDougal Corner) west of Dundee near Dayton. The estimated cost of Preferred Alternative Modified 3J is approximately \$311 million.

As part of the NDTIP, in September 2004 Yamhill County approved exceptions to Statewide Planning Goals 3 (Agricultural Lands), 11 (Public Facilities and Services), and 14 (Urbanization). These exceptions were necessary to address the location of the Preferred Alternative on Exclusive Farm Use land and the specific location of three of the four interchanges. Additionally, a series of Context Sensitive Solutions (CSS) workshops along with other public involvement activities were conducted as a part of this LFEIS to keep public and private stakeholders apprised of project progress and to gain knowledge about specific issues relevant to the analysis and future preliminary engineering.

This page intentionally left blank.

Table of Contents

Acronyms	vii
Glossary	x
Executive Summary	S-1
Introduction.....	S-1
Background	S-1
Purpose of Project – NDTIP	S-2
Need for Project – NDTIP	S-2
Objectives of the Project	S-2
Description of Preferred Alternative, Modified 3J	S-3
Modified 3J Impacts	S-11
Public Involvement and Agency Coordination	S-17
Chapter 1: Purpose and Need	1-1
Introduction.....	1-1
Background	1-1
Purpose of Project – NDTIP	1-2
Need for Project – NDTIP	1-4
Objectives of the Project	1-4
Related Projects	1-5
Chapter 2: Alternatives	2-1
History and Development of Build Alternatives	2-1
Screening of Alternatives	2-4
No Build.....	2-5
LDEIS Build Alternatives	2-6
Preferred Alternative	2-11
Interchange Area Management Plans.....	2-17
Cost of Build Alternatives	2-17
Alternatives Considered But Withdrawn.....	2-20
Chapter 3: Affected Environment	3-1
Introduction.....	3-1
Transportation	3-1
Land Use	3-6
Socioeconomics	3-10
Cultural Resources.....	3-14
Air Quality.....	3-17
Noise	3-17
Visual Environment	3-18
Water Resources.....	3-25
Biological Resources.....	3-27

Geological Hazards	3-37
Hazardous Materials	3-37
Chapter 4: Environmental Impacts	4-1
Introduction.....	4-1
IMPACT Analysis	4-1
Socioeconomics	4-29
Air Quality	4-44
Noise	4-44
Visual Environment	4-45
Water Resources.....	4-51
Biological Resources.....	4-52
Geological Hazards	4-60
Hazardous Materials	4-61
Energy	4-62
Chapter 5: Short-Term Use and Long-Term Productivity; Irreversible and Irretrievable Commitment of Resources; Cumulative Impacts.....	5-1
Short-Term Use and Long-Term Productivity.....	5-1
Irreversible and Irretrievable Commitment of Resources	5-1
Cumulative Impacts.....	5-1
Chapter 6: Proposed Mitigation and Conservation Measures and Tier 2 Activities	6-1
Transportation	6-1
Right of Way.....	6-1
Land Use	6-3
Socioeconomics	6-6
Historic and Cultural Resources.....	6-8
Air Quality.....	6-9
Noise	6-9
Visual Environment	6-9
Water resources and Biological Resources.....	6-9
Geological Hazards	6-13
Hazardous Materials	6-13
Energy	6-14
Future Tier 2 Actions	6-14
Chapter 7: Public and Agency Involvement.....	7-1
Approach	7-1
Scoping Period Outreach and Summary Results.....	7-1
LDEIS Public Comment Period	7-1
Advisory and Other Committees	7-2
Goal Exception	7-4
Elements of Public Outreach and Involvement.....	7-4

Chapter 8: LDEIS Comments and Responses 8-1
LDEIS Public and Agency Comment Process..... 8-1
Stated Preferences..... 8-2
Additional Information Requested / Errors..... 8-2
Issues/Concerns that May Result in Modification of an Alternative..... 8-3
Alternatives Requested 8-4

List of Figures

Figure S-1	LDEIS Build Alternatives	S-8
Figure S-2	Modified 3J	S-10
Figure 1-1	Project Location Map.....	1-3
Figure 1-2	Related Projects	1-6
Figure 1-3	Related Projects – IAMP Areas	1-9
Figure 2-1 A	LDEIS Build Alternatives	2-9
Figure 2-1 B	Development of Modified 3J	2-14
Figure 2-2	Recommended Alternative Construction Phases	2-19
Figure 3-1	Existing Highway Lane Width	3-2
Figure 3-2	Comprehensive Plan Designations	3-9
Figure 3-3	Business & Commercial	3-13
Figure 3-4	Historic Sites	3-16
Figure 3-5	Landscape Areas	3-19
Figure 3-6	Important Visual Features	3-22
Figure 3-7	Floodplain Map.....	3-26
Figure 3-8	Wildlife.....	3-30
Figure 3-9	Fish Habitat	3-32
Figure 3-10	Wetland Functional Areas	3-36
Figure 3-11	Hazardous Materials Sites	3-39
Figure 4-1	Gen1 Modeling Zones	4-13
Figure 4-2	Areas Requiring Exceptions	4-21
Figure 4-3	Modified 3J – Areas Requiring Exceptions.....	4-22

List of Tables

Table S-1	Components of Bypass Build Alternatives.....	S-7
Table 2-1	Components of Bypass Build Alternatives.....	2-8
Table 2-2	Planning Level Cost of Build Alternatives (millions of dollars).....	2-18
Table 2-3	Preferred Alternative 3J Planning Level Cost by Phase.....	2-18
Table 2-4	Volume and Capacity Relationships to Roadway Lane Needs	2-22
Table 3-1	Existing Average Daily Traffic (2002) Along Oregon 99W.....	3-3
Table 3-2	Population and Households (1980–2000)	3-11
Table 3-3	Race and Ethnicity (2000)	3-12
Table 3-4	Household Incomes (1999)	3-12
Table 3-5	Summary of NRHP Eligibility	3-17
Table 3-6	Visual Character and Description of Views	3-20
Table 3-7	Viewer Characteristics.....	3-23
Table 3-8	Existing Visual Quality	3-24
Table 4-1	Summary of Average Daily Traffic (ADT)	4-3
Table 4-2	Average Daily Traffic (Year 2025) on other Major Roads (in thousands of vehicles per day)	4-4
Table 4-3	PM Peak Period Travel Time – East Newberg to Dayton (in minutes).....	4-5
Table 4-4	Percent of Trips Using the Bypass Depending on Their Origins and Destinations.....	4-6
Table 4-5	Number of Daily Freight Trips (Year 2025) on Oregon 99W	4-8
Table 4-6	Crash Potential Index (million vehicle miles traveled)	4-9
Table 4-7	Total Corridor Capacity to Handle Emergency Evacuations (in thousands of vehicles per day)	4-10
Table 4-8	Comparison of Alternatives: Land Displaced by Comprehensive Plan Designation (in acres)	4-11
Table 4-9	Comparison of Alternatives: Land Outside Within 45-Minute Commute to Portland Metro Area (in acres)	4-16
Table 4-10	Comparison of Alternatives: Vacant and Redevelopable Land in or Adjacent to a UGB and Within 0.6 Mile (1 km) Driving Distance From an Interchange, by Comprehensive Plan Designation, in Acres	4-17
Table 4-11	Summary of Elements of the Alternatives Requiring Exceptions to Statewide Planning Goals, in Acres	4-20
Table 4-12	Land Area Needed for Alternative Construction	4-30
Table 4-13	Right of Way Acquisition Cost by Alternative (millions of dollars).....	4-30

Table 4 -14	Residential and Business Displacements by Alternative	4-31
Table 4-15	Potential Impacts to Local Access	4-32
Table 4-16	Potential Neighborhood/Community Cohesion Impacts	4-38
Table 4-18	Spanish-Speaking and Hispanic Households in the Proposed Corridor, Newberg Study Area, and Yamhill County	4-40
Table 4-17	Comparison of Alternatives for Displacement of Low-Income and Minority Households	4-42
Table 4-19	Listed and Potentially Eligible Historic Properties That May Be Affected by the Proposed Bypass	4-43
Table 4-21	Potential Noise Impacts on Residences	4-44
Table 4-22	Non-residential Noise Impacts.....	4-45
Table 4-23	Potential Visual Impacts of Each Alternative	4-47
Table 4-24	Paved Surface Area	4-51
Table 4-25	Potential Impacts of Vegetated and Other Cover Types	4-53
Table 4-26	Potential Impacts on Wildlife Habitat (acres).....	4-54
Table 4-27	Potential Impacts on Wildlife Corridors and Riparian Buffers.....	4-55
Table 4-28	Potential Impacts on Fish Habitat.....	4-56
Table 4-29	Potential Wetland Impacts Acres.....	4-60
Table 4-30	Fuel Consumption by Alternative.....	4-62

List of Appendices

Appendix A	List of LFEIS Preparers
Appendix B	Information Sources
Appendix C	List of LDEIS Recipients
Appendix D	Agreements, Amended Policies and Ordinances
Appendix E	Location Final Section 4(f) Evaluation
Appendix F	Public and Agency Comments
Appendix G	Evaluation Criteria and Measures
Appendix H	Summary of ODOT Relocation Policy and Benefits
Appendix I	Oregon Statewide Model (Gen1)

Acronyms

ADT	Average Daily Traffic
AMLU	Alternate Mode and Land Use
AST	Above Ground Storage Tank
CETAS	Collaborative Environmental and Transportation Agreement for Streamlining
CFR	Code of Federal Regulations
CO	Carbon Monoxide
CPRD	Chehalem Park and Recreation District
CRL	Confirmed Release List
CVSCC	Chehalem Valley Senior Citizens Council
DAS	Oregon Department of Administrative Services
DLCD	Oregon Department of Land Conservation and Development
DEIS	Draft Environmental Impact Statement
DEQ	Oregon Department of Environmental Quality
DLC	Donation Land Claim
DSL	Oregon Department of State Lands
ECSI	Environmental Cleanup Site Information
EFU	Exclusive Farm Use
EIS	Environmental Impact Statement
ESA	Endangered Species Act
FEIS	Final Environmental Impact Statement
FEMA	Federal Emergency Management Agency
FHWA	Federal Highway Administration
FTA	Federal Transit Administration
Gen1	First Generation TLUMIP Model (Oregon Statewide Model)
GIS	Geographic Information Systems
GLO	General Land Office
HOV	High-Occupancy Vehicle
IAMP	Interchange Area Management Plan
IGA	Intergovernmental Agreement
IHSS	Inventory of Hazardous Substance Sites

ITS	Intelligent Transportation System
LDEIS	Location Draft Environmental Impact Statement
LFEIS	Location Final Environmental Impact Statement
LOS	Level of Service (traffic)
LUST	Leaking Underground Storage Tank
LWCF	Land and Water Conservation Fund
MAP	Multimodal Alternative Package
NAAQS	National Ambient Air Quality Standards
NDTIP	Newberg-Dundee Transportation Improvement Project
NEPA	National Environmental Policy Act
NFA	No Further Action
NMFS	National Marine Fisheries Service (Previously NOAA Fisheries)
NOAA Fisheries	National Oceanic and Atmospheric Administration Fisheries Service
NRHP	National Register of Historic Places
NON	Notice of Non-compliance
ODF	Oregon Department of Forestry
ODFW	Oregon Department of Fish and Wildlife
ODOT	Oregon Department of Transportation
OHP	Oregon Highway Plan
ONHP	Oregon Natural Heritage Program
OTC	Oregon Transportation Commission
PAC	Project Advisory Committee
PCS	Petroleum Contaminated Soil
PMT	Project Management Team
PNWR	Portland & Western Railroad
POST	Project Oversight Steering Team
SHPO	Oregon State Historic Preservation Office
STA	Special Transportation Area
SVAP	Stream Visual Assessment Protocol
TDM	Transportation Demand Management
TEA-21	Transportation Equity Act for the 21st Century
TLUMIP	Transportation and Land Use Model Integration Project

TPR	Transportation Planning Rule
TSM	Transportation System Management
TSP	Transportation System Plan
UGB	Urban Growth Boundary
USACE	U.S. Army Corps of Engineers
USC	United States Code
USDA	U.S. Department of Agriculture
USDOT	U.S. Department of Transportation
USFWS	U.S. Fish and Wildlife Service
USGS	United States Geological Survey
UST	Underground Storage Tank
v/c	volume to capacity (traffic)
WPRR	Willamette & Pacific Railroad

This page intentionally left blank.