

Ashland I-5 Exits 14 and 19

North Ashland Interchange - Green Springs Project



Spring 2009

Downtown Ashland inspires I-5 bridge designs

In a fitting tribute to Ashland's renowned historic downtown, proposed new designs for the Interstate 5 bridges at Exits 14 and 19 will feature artistic treatments that reflect local architecture. A nine-member Aesthetic Advisory Committee, appointed by the City of Ashland to make design recommendations for the project, has been meeting since the beginning of the year. At their April 15 meeting the group recommended an Art Deco theme for the bridges, with additional detailing drawn from the historic 1925 Ashland Springs Hotel.

The committee considered a variety of bridge design themes. Special attention was focused on Exit 14 (Green Springs Highway), which is a northbound gateway to Ashland and Oregon. Ultimately the committee settled on a contemporary Art Deco theme for the bridges. The designs will be shown at public open houses planned for Thursday, May 28 (details in this newsletter).

The group found inspiration in design details from the rooftop of the Ashland Springs Hotel. Ten-foot tall concrete pylons at the ends of the bridges are topped by pointed shapes also found on the hotel's parapets. The shape also is featured on the supports for the light poles. The pedestrian fencing with a rust-colored powder coating features a central arch that was taken right from the hotel's rooftop façade.

In another nod to downtown Ashland, the light poles on the bridge will provide supports for banners. The light fixtures will be "dark-sky compliant" to minimize light pollution at night. The newly widened bridge at Exit 14 also will feature a center turn lane, traffic signals at both ends of the bridge, and bike lanes and sidewalks.

The design of Exit 19 will be a more simplified version of Exit 14. The bridge will be replaced with a new, wider structure featuring a center turn lane. The bridge deck will feature wide shoulders to accommodate bicycles.

Members of the advisory committee have enjoyed the process of choosing a design theme for the bridges. "It has been a terrific experience," said Jennifer Longshore, who represents the Ashland Public Arts Commission. "Coming to the table and collaborating with the project team allowed our committee to develop an aesthetic vision that will serve as Southern Oregon's gateway for many years to come."

John Rinaldi, Jr., chairman of the Ashland Tree Commission, agreed. "Together we worked collaboratively to arrive at project design elements that we feel typify the unique character of our community and the surrounding landscape."



The Varsity Theater in downtown Ashland is an example of Art Deco architecture, which features clean lines and geometric shapes.



The light poles at Exit 14 will have supports for banners, such as those in downtown Ashland.

OTIA
Oregon Department of Transportation

North Ashland Interchange - Green Springs Project
c/o JLA Public Involvement
1110 SE Alder Street, Suite 301
Portland, OR 97214

Join Us at a May 28 Open House

Drop in at any time during one of the Thursday, May 28 open houses to meet the project team, review the proposed bridge and landscaping designs, and learn more about project construction, which is scheduled to begin in 2010. Two meeting times are offered for your convenience (see box at left).

More information about the project is available at:
www.oregon.gov/ODOT/HWY/REGION3
(Click on the "Interchanges 14 & 19" link.)

Questions?

Contact Gary Leaming, ODOT Project Information Specialist
(541) 774-6388 or email Gary.W.Leaming@odot.state.or.us

Persons with disabilities requiring accommodation, please contact Sylvia Ciborowski at (503) 235-5881 or email sylvia@jla.us.com at least one week before the open house.

Open Houses
May 28, 2009

Daytime Meeting

11:30 a.m. – 1:30 p.m.
Pioneer Hall
73 Winburn Way
Ashland, Oregon

Evening Meeting

5 p.m. – 7 p.m.
Best Western Windsor Inn
2520 Ashland Street
Ashland, Oregon

The project is part of the Oregon Department of Transportation's 10-year, \$3 billion Oregon Transportation Investment Act program. OTIA funds will repair or replace hundreds of bridges, pave and maintain city and county roads, improve and expand interchanges, add new capacity to Oregon's highway system, and remove freight bottlenecks statewide. About 14 family-wage jobs are sustained for every \$1 million spent on transportation construction in Oregon. Each year during the OTIA program, construction projects will sustain about 4,100 family-wage jobs.



A simulation of the bridge at Exit 14 (Green Springs Hwy.)

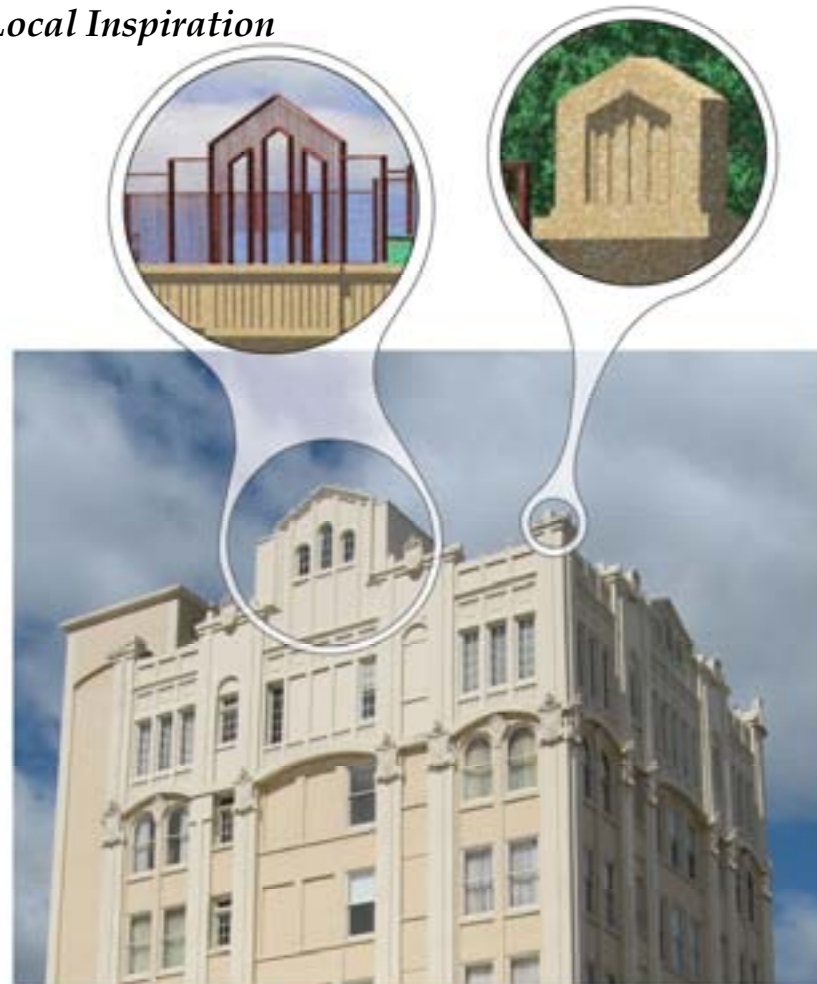
Key design elements proposed for Exit 14

- 1 Natural-colored concrete to blend with the landscape
- 2 Vertical lines on the concrete piers and abutments
- 3 Pointed shapes on the light pole supports and pylons at the bridge ends
- 4 Art Deco-style concrete emblems on the sides of the bridge
- 5 Rust-colored, powder coated, decorative railings
- 6 Decorative light poles with supports for banners

Not shown:

- 7 Stamped concrete sidewalks

Local Inspiration



Design details from the rooftop of the Ashland Springs Hotel are featured on the Exit 14 bridge. The pedestrian fencing will feature a central arch modeled after the hotel's rooftop façade. Concrete pylons at the ends of the bridges will be topped by shapes found on the hotel's parapets.

New landscaping to beautify both exits

The Aesthetic Advisory Committee weighed in on proposed landscaping treatments at both of the exits. The group wanted to ensure the bridge designs work in harmony with the surrounding landscape.

For Exit 14 (depicted here), the committee decided to make a statement for northbound I-5 drivers approaching the interchange. The landscaping will feature mass plantings of flowering bulbs, trees and shrubs providing colorful, four-seasons interest. Flowering pear trees will create an orchard effect to highlight the area's agricultural offerings. Space can be left within the landscaped area for future artwork or a sign welcoming visitors to the community.

Drivers approaching Exit 14 southbound will see "natural" groves of taller evergreen trees and shrubs. Exit 14 will have a new irrigation system installed with the plantings.

Exit 19 will have a more natural effect, with mass plantings of native trees and shrubs such as white oak, Oregon grape, and ceanothus. No irrigation will be installed at Exit 19, therefore native species will perform better at this location. Temporary watering will be provided in the first couple of years to help establish the plants.



Exit 14 Landscaping