





# Bypass with Directional Interchange at OR 62 (DI Alternative)

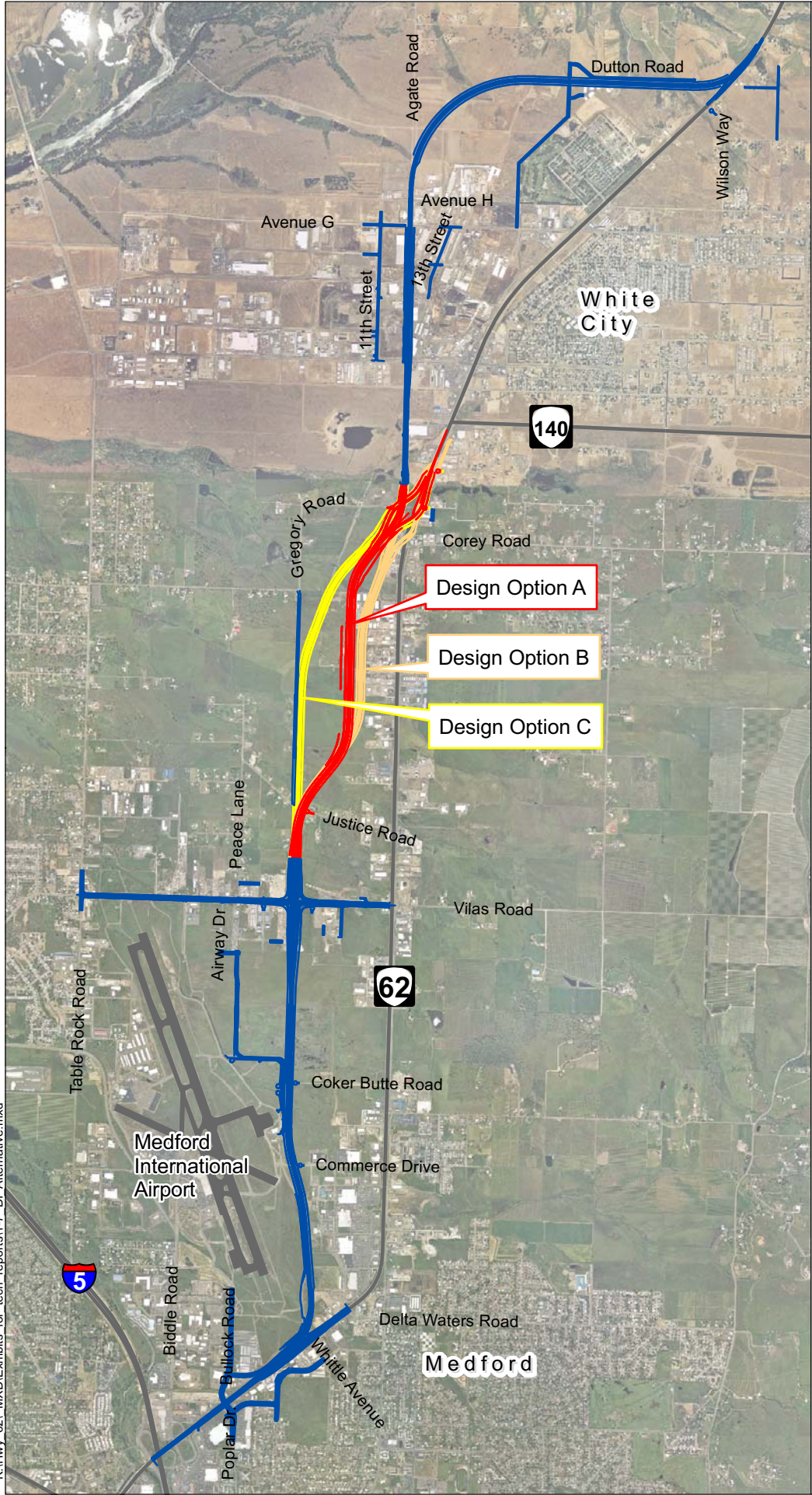
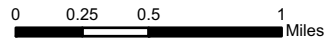
Figure 1-7  
September 2010



## Map Features

-  DI Alternative
-  Design Option A
-  Design Option B
-  Design Option C

Source: ODOT, Jackson County



K:\Hwy\_62\_MXD\Exhibits for tech reports\1-7 DI Alternative.mxd