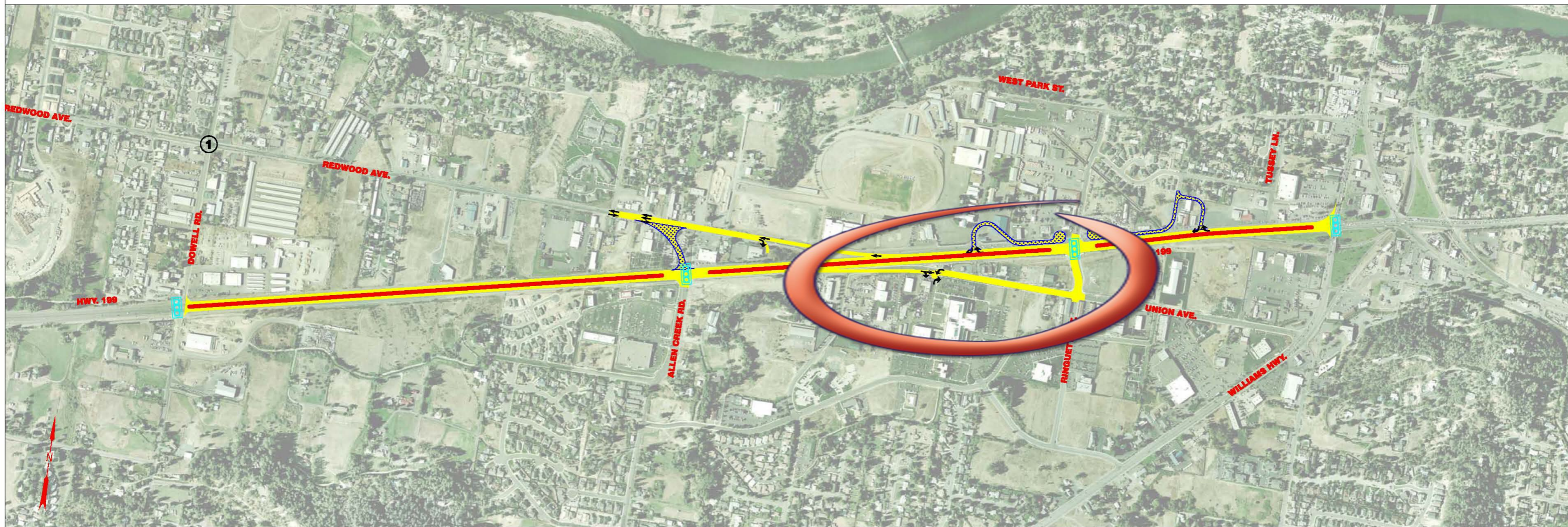


Example of the Union Ave Slip Ramp Design Element

Typ Raised Median





FEATURES

- Align Redwood Ave with Allen Creek Rd.
- One-Way Slip Ramp from EB Hwy 199 to Union Ave.
- No U-Turns at Signals

NOTES

- ① - Intersection will be Evaluated
- 2 - Proposed Signal Locations Pending Traffic Analysis and Modeling



-  EXISTING / IMPROVED ROADWAY
-  NEW ROADWAY

CONCEPT: EAST - CAC-2
06/21/05