



## Barr Road Quarry (Site N)

Last Updated: October 19, 2008

### Key Project Components

- Develop a high quality rock source in the Cline Buttes area for use on state highway projects.
- The quarry site is located on land managed by the Bureau of Land Management (BLM). The site is approximately 105 acres in size.
- Exploration in the area has revealed a high quality rock source that could produce approximately three million tons of aggregate and could last 20 years.
- Having a public rock source allows more contractors to bid for state highway projects, allowing the State to receive the most competitive bids possible, and the taxpayers to get the best transportation value for their tax dollar.



Proposed Barr Road quarry site looking west.

### Location

The Barr Road Quarry (Site N) is located in the Cline Buttes area adjacent to an existing 30 acre cinder pit off of Barr Road (see vicinity map at end of document).

### Background

Maintaining and constructing highways requires high quality sources of aggregate materials. More than 90% of a highway consists of rock or soil products. Sources of aggregate, an essential road building material, are an integral part of ODOT's mission "To provide safe, efficient transportation systems to support economic development and livability for Oregonians".

The Cline Buttes area is proximate to several highways: OR 126, US 97 and US 20. Development of a material source in the area would ensure a long-term supply of materials needed for maintenance and construction of the highways in the Bend-Redmond-Sisters area.

This area was identified as an area in great need of an aggregate supply through extensive studies conducted in the 1990's. Of all of the sites considered in the study, Site N is the only remaining viable public rock source in the Bend-Sisters-Redmond area. This site is within an area that is available for the development of mineral materials per the BLM's [Upper Deschutes Resource Management Plan](#) (UDRMP) Environmental Impact Statement and Record of Decision completed in 2005 (see page 89 and Map 8 of the UDRMP).

Site specific environmental studies have been conducted at the Barr Road Quarry site by ODOT. These studies included: archeology, wildlife, threatened and endangered species, socio-economics, air quality, water quality, erosion, and visuals.

ODOT sets specific conditions for any operations in the quarry site. These conditions include the following: dust control plans and dust abatement, adherence to noise standards, blasting safety and protection measures, site-specific erosion and pollution control plans, long-term site safety measures, and concurrent development and reclamation efforts.

## Timeline

1992-2006 - ODOT conducted many studies to identify and address the aggregate need in Central Oregon. These efforts included significant public involvement and environmental studies. The most recent of these efforts was the BLM Environmental Impact Statement for the Upper Deschutes Resource Management Plan.

Fall 2007 - ODOT made an application through the Federal Highway Administration (FHWA) for use of Barr Road Quarry (Site N) as a source of aggregate materials for public road projects.

Summer 2008 – ODOT submitted additional application materials to FHWA. This reduced the size of the quarry site from 200 to approximately 105 acres.

Fall/Winter 2008/2009 – FHWA will send a formal application to BLM. BLM will review the application and evaluate it for consistency with the UDRMP.

Winter 2009 - The application process will be finalized. The land remains the property of the BLM, but ODOT acquires the ability to use the site to mine and process aggregate materials for use on public road projects. ODOT will develop a reclamation plan and other documents necessary to permit the site through the Department of Geology and Mineral Industries (DOGAMI).

## Contacts

Name	Telephone Number	Email Address
Amy Pfeiffer, Project Leader	541.388.6052	<a href="mailto:Amy.L.Pfeiffer@ODOT.state.or.us">Amy.L.Pfeiffer@ODOT.state.or.us</a>
Rex Holloway, Community Liaison	541.388.6178	<a href="mailto:Rex.A.Holloway@ODOT.state.or.us">Rex.A.Holloway@ODOT.state.or.us</a>

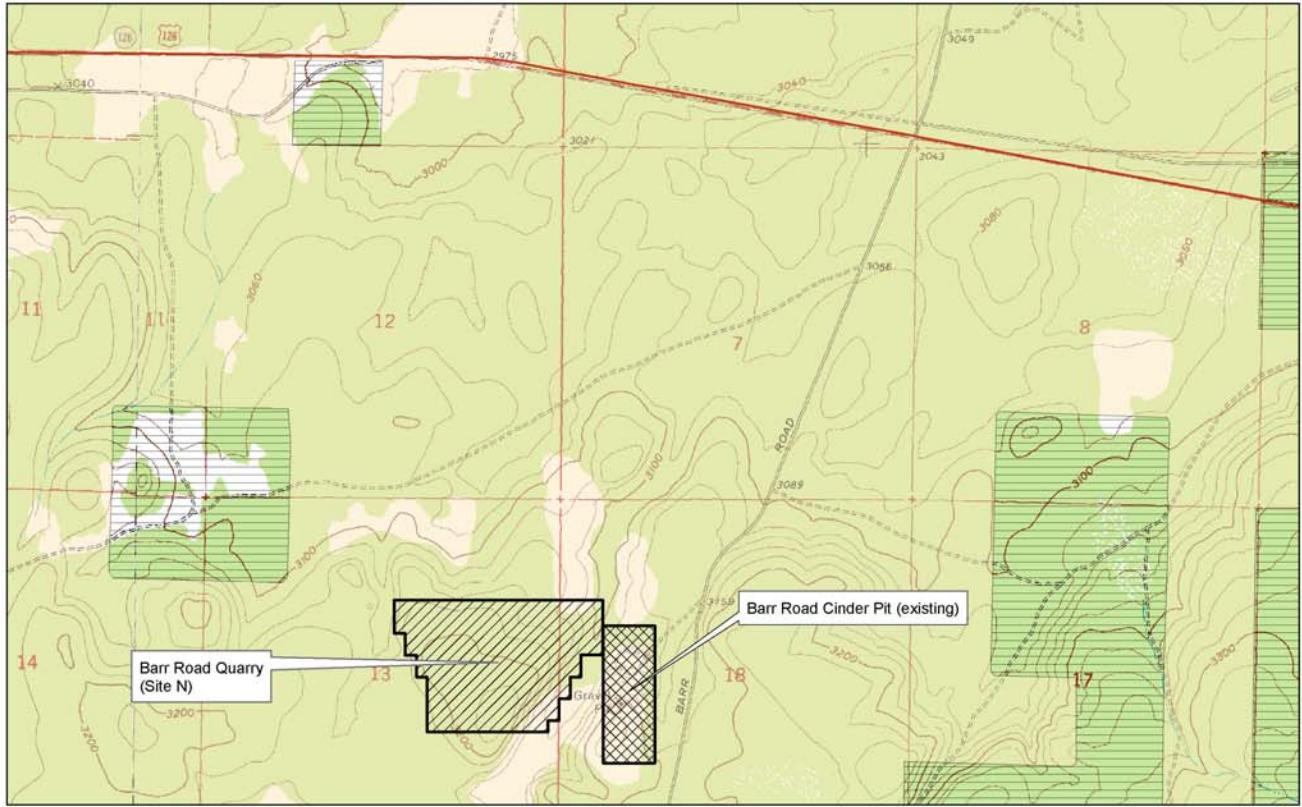
## Internet Links

Barr Road Quarry Project Website





[http://www.oregon.gov/ODOT/HWY/REGION4/Barr\\_Road\\_Quarry\\_Site\\_N.shtml](http://www.oregon.gov/ODOT/HWY/REGION4/Barr_Road_Quarry_Site_N.shtml)

BLM Upper Deschutes Resource Management Plan

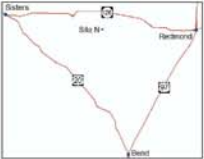
<http://www.blm.gov/or/districts/prineville/plans/deschutesrmp/index.php>



**LEGEND**

-  Bureau of Land Management (BLM)
-  Privately Owned Land
-  Barr Road Cinder Pit (existing)
-  Barr Road Quarry (Site N)

**Barr Road Quarry (Site N) Locator Map**





**OREGON DEPARTMENT OF TRANSPORTATION**

**Barr Road Quarry (Site N) and Barr Road Cinder Pit**  
T. 15 S., R. 11 E., Sec. 13 and T. 15 S., R 12 E., Sec. 18



Miles



**DISCLAIMER:**  
This product is for informational purposes only and may not have been prepared for or be suitable for legal, engineering or surveying purposes. Users of this information should review or consult the primary data and information sources to ascertain the usability of the information.