

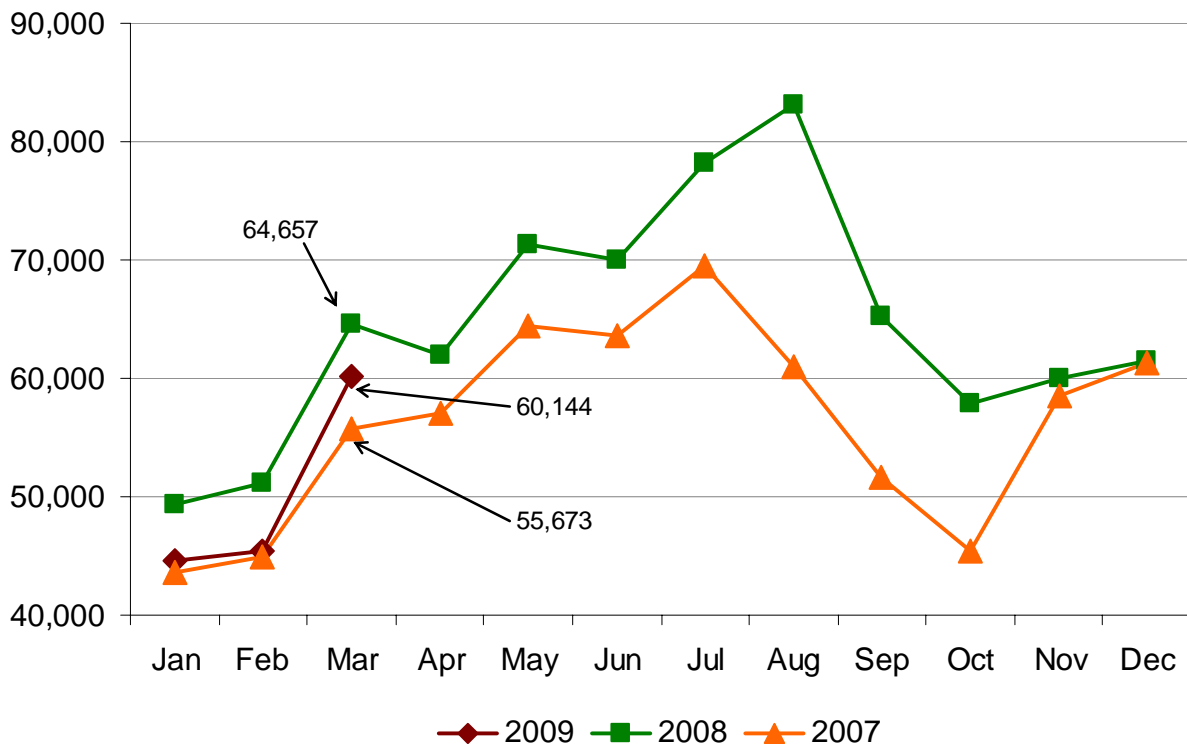


Amtrak Cascades Ridership Report – March 2009

The following information is a snapshot of ridership performance, average trip length, and year-to-date summary.

Ridership

Passengers



In comparison with March 2008:

- In March 2008, the Coast Starlight did not operate and the Amtrak *Cascades* absorbed the majority of those passengers. This year the Coast Starlight was operating on a normal schedule.
- Overall ridership decreased 7.0 percent.
- Ridership for train **500** (PDX-SEA) decreased 5.8 percent and **500** (EUG-PDX) increased 13.9 percent. Train **500** had a significant delay on March 24, due to a broken rail. Passengers were provided alternative transportation.
- Ridership for train **501** (SEA-PDX) decreased 9.4 percent.
- Ridership for train **506** (PDX-SEA) decreased 7.0 percent and **504** (EUG-PDX) decreased 19.2 percent.
- Ridership for train **507** (SEA-PDX) decreased 1.1 percent and **507** (PDX-EUG) decreased 25.3 percent.
- Ridership for train **508** (PDX-SEA) decreased 17.0 percent.
- Ridership for train **509** (SEA-PDX) decreased 1.1 percent and **509** (PDX-EUG) increased 26.5 percent.

- Ridership for train **510** (SEA- VAC) decreased 4.6 percent. Service on train **510** was cancelled due to locomotive failure on train **517** on March 25-26. Passengers were provided alternative transportation.
- Ridership for train **513** (BEL-PDX) decreased 12.1 percent.
- Ridership for train **516** (PDX-BEL) decreased 3.5 percent.
- Ridership for train **517** (VAC-SEA) decreased 5.6 percent. Service on train **517** was terminated on March 19, 25, and 26 due to locomotive failure. Passengers were provided alternative transportation.
- Amtrak Superliner equipment is being used for trains **510** and **517** and is operating with its original schedule.
- WSDOT and Amtrak began a new state-sponsored Amtrak *Cascades* connecting bus service on May 12, 2008. March ridership for this new bus service was 1,462. This was a 39.6 percent increase from February 2009.

Monthly Ridership per Funding Agency

Amtrak *Cascades* operations are funded by the states of Washington and Oregon and Amtrak. This table provides a breakdown per funding agency.

In comparison with March 2008:

- Ridership for Washington State funded trains decreased 11.5 percent.
- Ridership for Oregon funded trains decreased 11.6 percent.
- Ridership for Amtrak funded trains decreased 9.3 percent.

Agency	2009	2008	2007
Washington Funded Trains	40,178	43,664	36,077
Oregon Funded Trains*	10,085	10,756	10,523
Amtrak Funded Trains**	9,881	10,237	9,073
Route Totals	60,144	64,657	55,673

* Represents trains **500** and **504** (EUG-PDX), and **507** and **509** (PDX-EUG).

** Represents trains **500** (PDX-SEA) and **509** (SEA-PDX).

Year-to-Date (YTD) Summary

YTD Feb	Ridership	Passenger Miles (PM)	Ave. Trip Length (miles)
2009	150,112	23,225,948	154.7
2008	165,004	25,510,474	154.6
2007	144,251	22,209,630	154.0

- Average trip length was comparable to 2008 and slightly more than 2007.