



# Amtrak Cascades Ridership Report February 2008

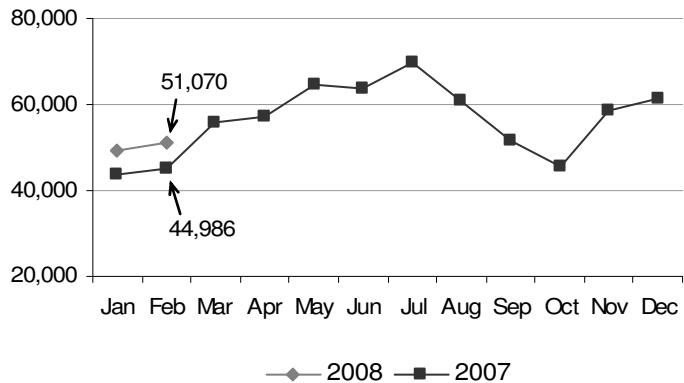


The following information is a snapshot of ridership performance (with a few observations), average trip length, a year-to-date summary, and other Amtrak Cascades news.

## Ridership

- Ridership increased 13.5 percent when compared with February 2007.\*
- Ridership for train 501(Sea-Pdx) increased 21.4 percent when compared with February 2007.
- Ridership for trains 507 (Sea-Pdx) and 507 (Pdx-Eug) increased 10.8 and 50.5 percent respectively when compare with February 2007.
- Ridership for train 508 (Pdx-Sea) increased 13.6 percent when compared with February 2007.
- Ridership for trains 513 and 516 increased 36.1 and 11.5 respectively when compared with February 2007.
- This is the highest ridership for the month of February since the inception of the service.

Passengers



\*2008 is a leap year, which means February has one extra day.

## Monthly Ridership per Funding Agency

Amtrak Cascades operations are funded by the states of Washington and Oregon and Amtrak. This table provides a breakdown per funding agency.

- Ridership for Washington State funded trains increased 14.3 percent when compared with February 2007.
- Ridership for Oregon funded trains increased 12.7 percent when compared with February 2007.
- Ridership for Amtrak funded trains increased 10.6 percent when compared with February 2007.
- See "Other Amtrak Cascades News" below for explanation.

Agency	2008	2007
Washington Funded Trains	34,943	30,551
Oregon Funded Trains*	8,227	7,296
Amtrak Funded Trains**	7,900	7,139
<b>Route Totals</b>	<b>51,070</b>	<b>44,986</b>

\*Represents trains 500 (Eug-Pdx), 504, 507 (Pdx-Eug), and 509 (Pdx-Eug).

\*\*Represents trains 500 (Pdx-Sea) and 509 (Sea-Pdx).

## Year-to-Date (YTD) Summary

- Average trip length increased 5.2 percent when compared with 2007.

YTD Jan	Ridership	Passenger Miles (PM)	Ave. Trip Length (miles)
2008	100,347	15,425,242	153.7
2007	88,578	13,565,631	146.0

## Other Amtrak Cascades News

- Amtrak Superliner equipment is being used for trains 510 and 517 and is operating with its original schedule.
- Amtrak's Coast Starlight service was suspended on January 19, 2008 due to a landside in Oregon, with local passengers being re-accommodated on Amtrak Cascades Service.