



# Amtrak Cascades Ridership Report May 2008



The following information is a snapshot of ridership performance (with a few observations), average trip length, a year-to-date summary, and other Amtrak Cascades news.

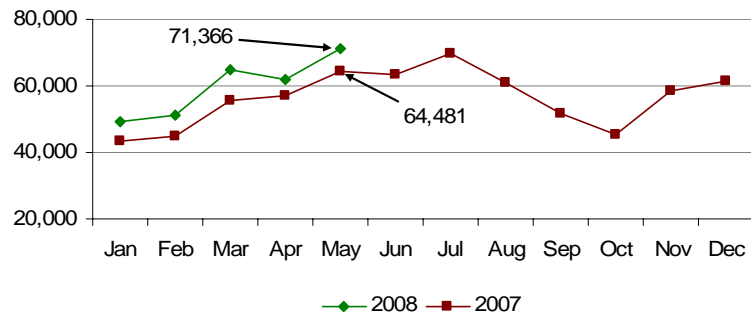
## Ridership

**May 2008 ridership is the highest monthly total in the history of Amtrak Cascades service.**

When compared with May 2007:

- Ridership increased 10.7 percent.
- Ridership for train 501(Sea-Pdx) increased 26.8 percent.
- Ridership for trains 507 (Sea-Pdx) and 507 (Pdx-Eug) increased 19.6 percent and 2.8 percent respectively.
- Ridership for train 508 (Pdx-Sea) increased 11.4 percent.
- Ridership for trains 513 and 516 increased 11.2 percent and 10.3 percent respectively.

### Passengers



## Monthly Ridership per Funding Agency

Amtrak Cascades operations are funded by the states of Washington and Oregon and Amtrak. This table provides a breakdown per funding agency.

When compared with May 2007:

- Ridership for Washington State funded trains increased 10.3 percent.
- Ridership for Oregon funded trains increased 2.8 percent.
- Ridership for Amtrak funded trains increased 19.4 percent.
- See "Other Amtrak Cascades News" below for other information.

Agency	2008	2007
Washington Funded Trains	47,714	43,249
Oregon Funded Trains*	11,508	11,196
Amtrak Funded Trains**	11,982	10,036
<b>Route Totals</b>	<b>71,204</b>	<b>64,481</b>

\*Represents trains 500 (Eug-Pdx), 504, 507 (Pdx-Eug), and 509 (Pdx-Eug).

\*\*Represents trains 500 (Pdx-Sea) and 509 (Sea-Pdx).

## Year-to-Date (YTD) Summary

- Average trip length remained consistent when compared with 2007.

YTD	Ridership	Passenger Miles (PM)	Ave. Trip Length (miles)
2008	314,183	48,964,657	155.5
2007	285,231	44,712,081	156.8

## Other Amtrak Cascades News

- Amtrak's Coast Starlight service was suspended on January 19, 2008, due to a landside in Oregon. Normal Coast Starlight operations resumed on May 7.
- WSDOT and Amtrak began a new Amtrak Cascades connecting bus service on May 12. Northbound passengers riding train 500 can now connect in Seattle to a direct bus to Everett, Mount Vernon, and Bellingham. Southbound, the bus makes the same stops, and connects to train 509 in Seattle.