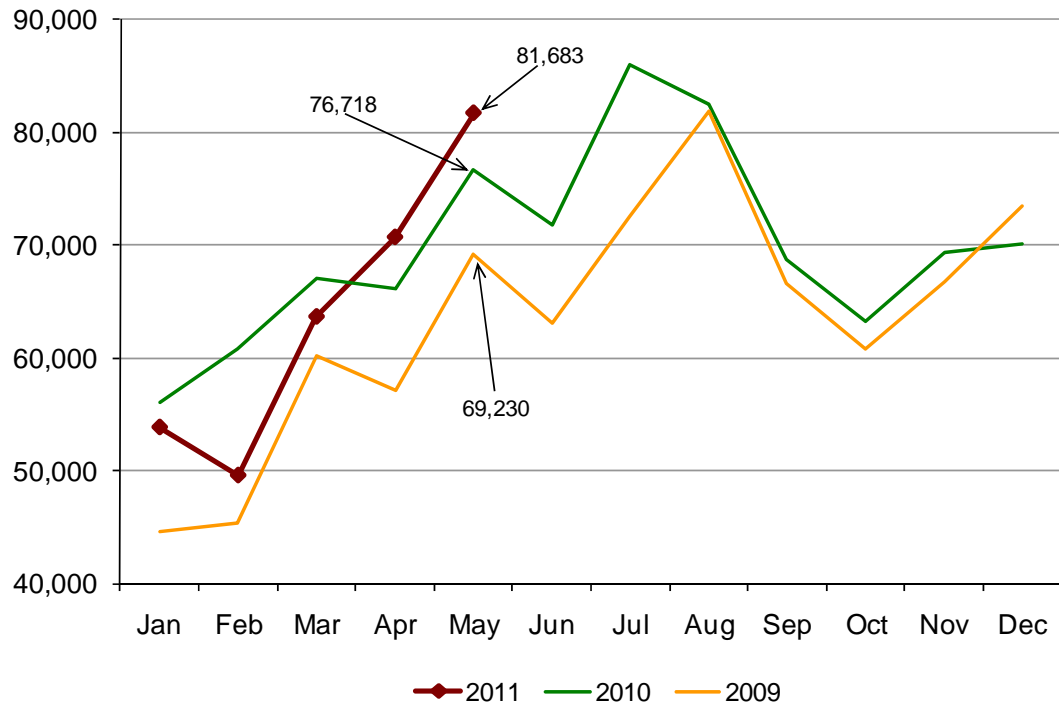


## Amtrak Cascades Monthly Data Ridership Report – May 2011

### Ridership – Record May Ridership

#### Passengers



May 2011's ridership is a 6.5 percent increase over May 2010 and 18.0 percent increase over May 2009. This is the highest monthly ridership this year and the highest ridership ever for the month of May.

### Monthly Ridership by Funding Agency

Amtrak *Cascades* operations are funded by the states of Washington and Oregon and Amtrak. This table provides a breakdown by funding agency.

Funding Agency	May					
	2011		2010		2009	
	Riders	%	Riders	%	Riders	%
Washington	56,970	69.7	53,636	69.9	47,434	68.5
Oregon	12,753	15.6	11,050	14.4	10,332	14.9
Amtrak	11,960	14.6	12,032	15.7	11,464	16.6
<b>Totals</b>	<b>81,683</b>	<b>100.0</b>	<b>76,718</b>	<b>100.0</b>	<b>69,230</b>	<b>100.0</b>

## Year-to-Date (YTD) Summary

YTD	Ridership	Passenger Miles	Ave. Trip Length (miles)
2011	319,368	50,274,307	157.4
2010	326,584	51,393,110	157.4
2009	276,542	41,981,159	151.8

## Monthly Ridership by Train

Train #	Sponsored By	Route	Ridership	Percent Change 2010 to 2011
500	Amtrak	Portland to Seattle	6,037	-0.5
	Oregon	Eugene to Portland	3,026	23.8
501	Washington	Seattle to Portland	5,606	18.4
506	Washington	Portland to Seattle	6,820	-2.3
504	Oregon	Eugene to Portland	3,738	14.2
507	Washington	Seattle to Portland	5,051	1.1
	Oregon	Portland to Eugene	3,548	8.8
508	Washington	Portland to Seattle	5,291	0.4
509	Amtrak	Seattle to Portland	5,923	-0.7
	Oregon	Portland to Eugene	2,441	17.8
510	Washington	Seattle to Vancouver, BC	6,323	7.0
513	Washington	Vancouver, BC to Portland	11,584	6.2
516	Washington	Portland to Vancouver, BC	11,751	10.5
517	Washington	Vancouver, BC to Seattle	4,544	8.1
Bus*	Washington	Seattle to Bellingham	1,817	2.7

\* Actual ticket lift.

## Train Disruptions

Train disruptions are when the Amtrak *Cascades* service for a specific train is cancelled, terminated, or annulled. The Union Pacific Railroad performed track work over the month of May, which caused intermittent disruptions.

Date	Train #	Disruption	Type	State
5/2/2011	517	Locomotive Failure	Cancellation	BC/WA
5/4/2011	504	Track Work	Cancellation	OR
5/18/2011	504	Track Work	Cancellation	OR
5/21/2011	504	Track Work	Cancellation	OR
5/23/2011	504	Track Work	Cancellation	OR

## Station On-Offs\*

Station	On	Off	Total	% Increase/ Decrease from May 2010 Total
Albany	1,335	1,103	<b>2,438</b>	22.0
Bellingham	2,619	2,519	<b>5,138</b>	-15.2
Centralia	852	795	<b>1,647</b>	-11.2
Edmonds	1,054	1,072	<b>2,126</b>	-1.8
Eugene	3,146	2,849	<b>5,995</b>	8.9
Everett	1,247	935	<b>2,182</b>	-1.9
Kelso/Longview	863	868	<b>1,731</b>	-28.5
Mt. Vernon	1,199	1,165	<b>2,364</b>	34.9
Olympia/Lacey	2,074	2,113	<b>4,187</b>	-9.7
Oregon City	410	436	<b>846</b>	21.2
Portland	22,048	21,827	<b>43,875</b>	9.5
Seattle	24,384	23,592	<b>47,976</b>	8.0
Salem	2,250	2,311	<b>4,561</b>	37.4
Stanwood	137	144	<b>281</b>	-28.7
Tacoma	4,099	4,108	<b>8,207</b>	-4.3
Tukwila	1,126	1,154	<b>2,280</b>	5.5
Origin/Destination Unidentified**	1,664	1,664	<b>3,328</b>	-24.0
Vancouver, BC	7,660	9,519	<b>17,179</b>	23.8
Vancouver, WA	3,443	3,436	<b>6,879</b>	0.4
RailPlus***	73	73	<b>146</b>	62.2

\* Station On-Offs are used to record how many passengers got on the train or got off the train at each station.

\*\* Origin/Destination Unidentified includes Deferred and Unknown riders who get off and on at unidentified destinations. Deferred riders are those that purchase their tickets and then “defer” their trip to a future date. Unknown riders are those that Amtrak did not identify in the system.

\*\*\* RailPlus – passengers transferring from Sound Transit to Amtrak Cascades.