



Amtrak Cascades Ridership Report October 2008



The following information is a snapshot of ridership performance (with a few observations), average trip length, a year-to-date summary, and other Amtrak Cascades news.

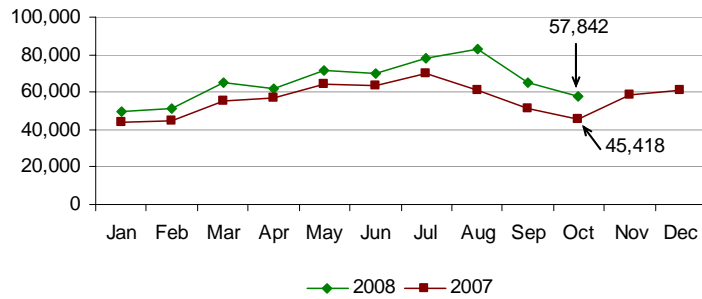
Ridership

October breaks 50,000 for the first time.

Ridership decreased in October 2007 due to mechanical issues with the Talgo equipment. When compared with October 2007:

- Ridership increased 27.4 percent.
- Ridership for train 501(Sea-Pdx) increased 43.6 percent.
- Ridership for train 508 increased 55.7 percent.
- Ridership for train 509 (Sea-Pdx) and 509 (Pdx-Eug) increased 35.8 percent and 83.7 percent, respectively.
- Ridership for trains 513 and 516 increased 59.5 percent and 43.4 percent respectively.

Passengers



Monthly Ridership per Funding Agency

Amtrak Cascades operations are funded by the states of Washington and Oregon and Amtrak. This table provides a breakdown per funding agency.

When compared with October 2007:

- Ridership for Washington State funded trains increased 25.1 percent.
- Ridership for Oregon funded trains increased 39.6 percent.
- Ridership for Amtrak funded trains increased 26.0 percent.
- See "Other Amtrak Cascades News" below for other information.

| Agency | 2008 | 2007 |
|--------------------------|---------------|---------------|
| Washington Funded Trains | 39,025 | 31,195 |
| Oregon Funded Trains* | 9,132 | 6,541 |
| Amtrak Funded Trains** | 9,685 | 7,682 |
| Route Totals | 57,842 | 45,418 |

*Represents trains 500 (Eug-Pdx), 504, 507 (Pdx-Eug), and 509 (Pdx-Eug).

**Represents trains 500 (Pdx-Sea) and 509 (Sea-Pdx).

Year-to-Date (YTD) Summary

- Average trip length has increased an average of one mile per passenger when compared with 2007.

| YTD | Ridership | Passenger Miles (PM) | Ave. Trip Length (miles) |
|------|-----------|----------------------|--------------------------|
| 2008 | 652,812 | 100,664,469 | 154.2 |
| 2007 | 556,925 | 85,392,884 | 153.3 |

Other Amtrak Cascades News

- Amtrak Superliner equipment is being used for trains 510 and 517 and is operating with its original schedule.
- WSDOT and Amtrak began a new Amtrak Cascades connecting bus service on May 12. October ridership for this new bus service was 1,483. Ridership remained constant from September to October, 2008.
- On-time performance for October was 78.0 percent, the highest in 2008.