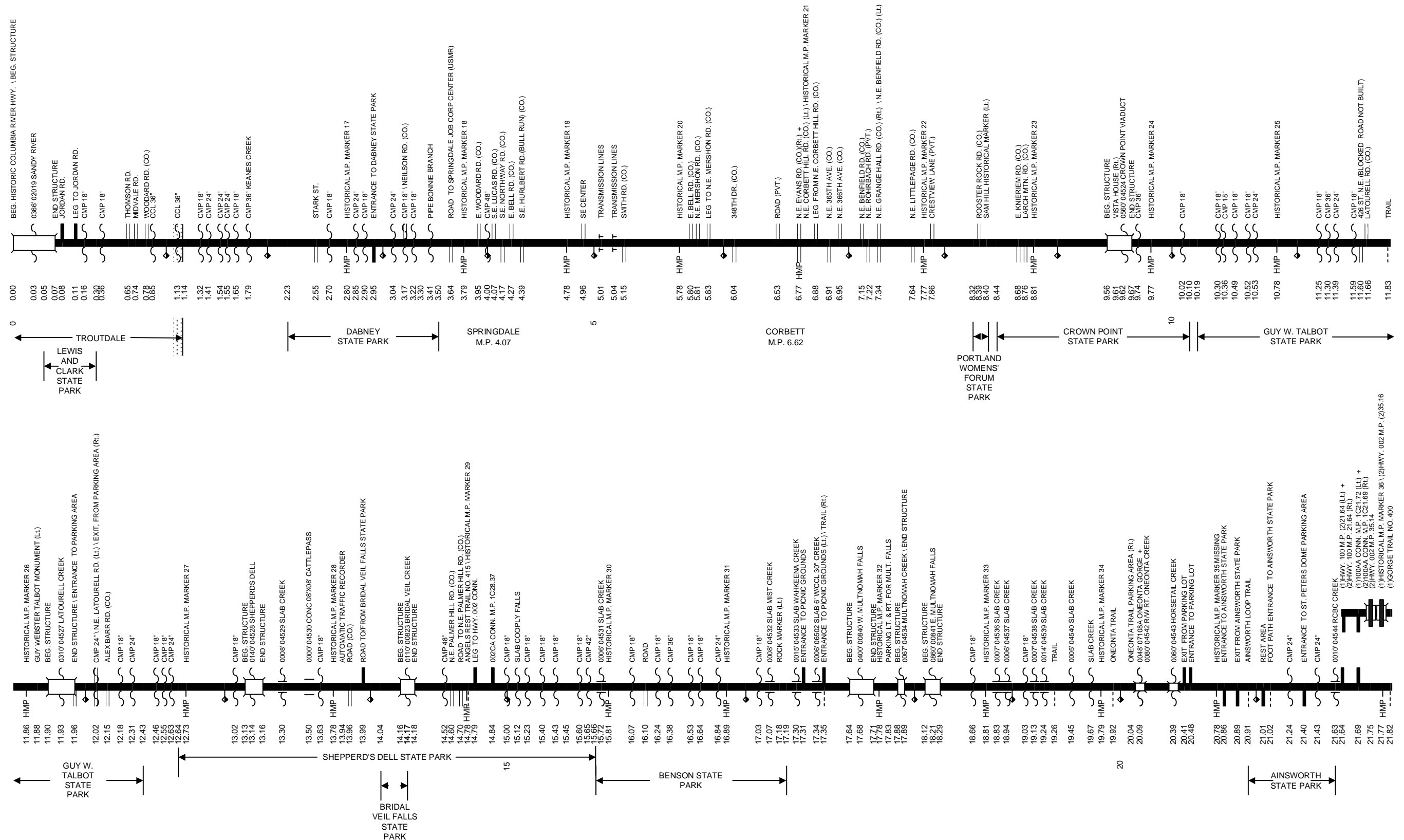


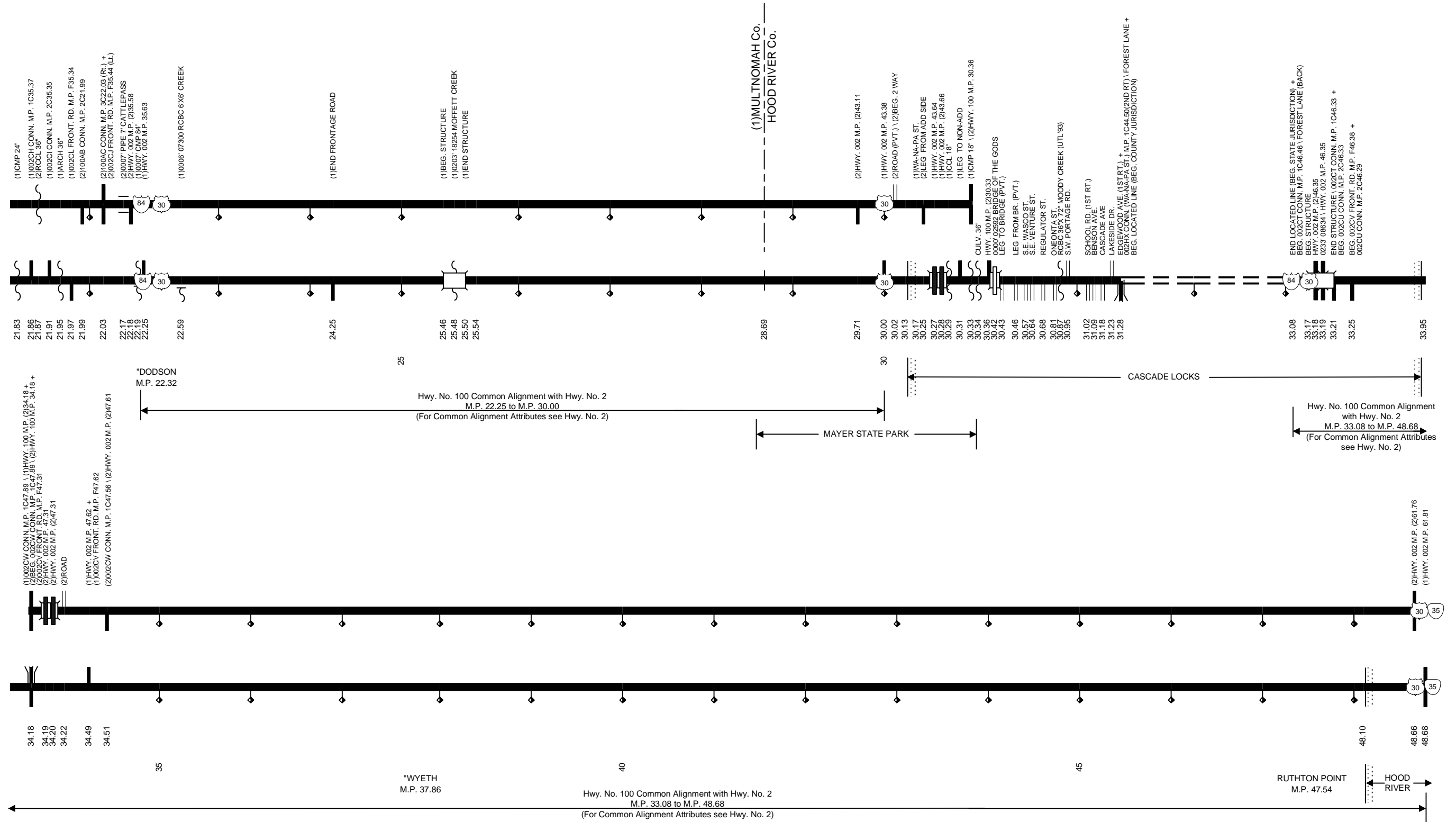
Region 1 District 2C

HISTORIC COLUMBIA RIVER HIGHWAY No. 100



Region 1 District 2C

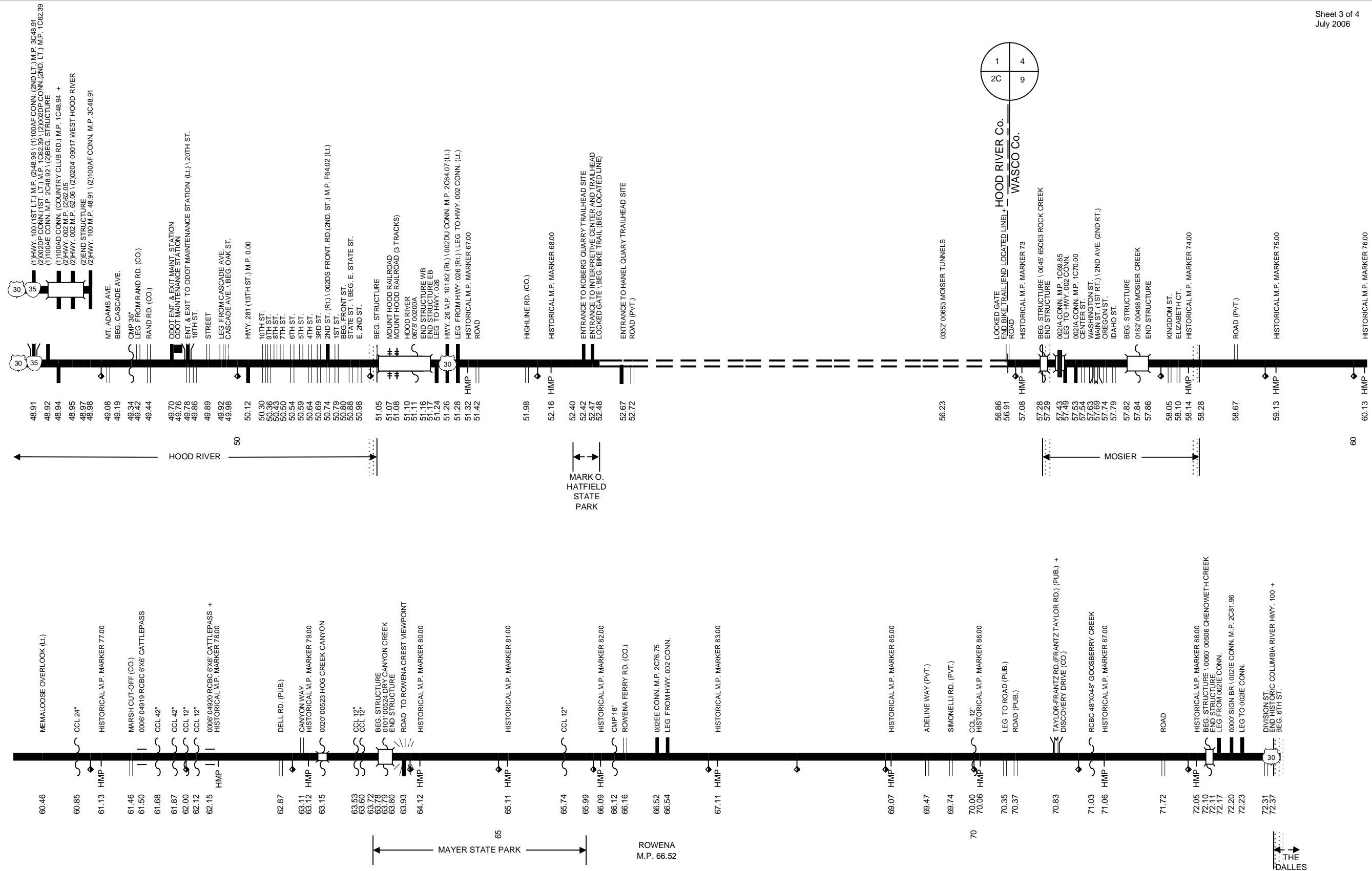
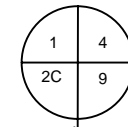
HISTORIC COLUMBIA RIVER HIGHWAY No. 100



NOTE: Milepoints on Straightline Chart are not to scale.

Region 1 District 2C / Region 4 District 9

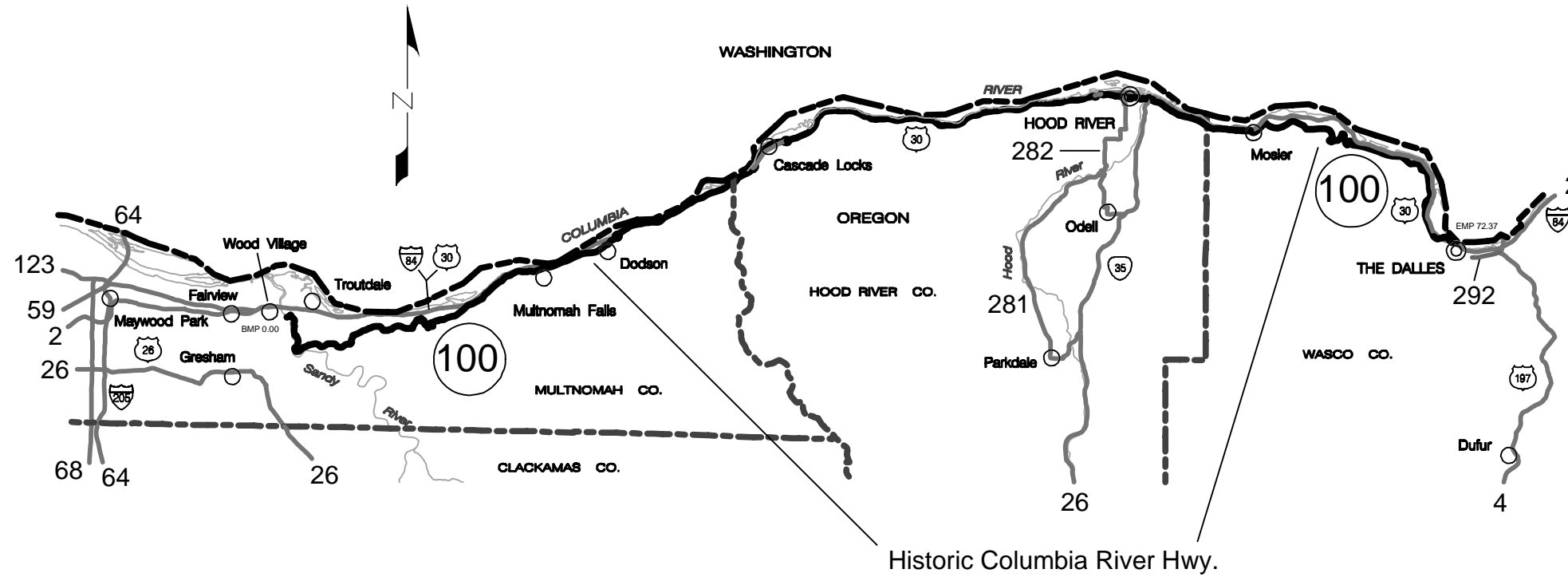
HISTORIC COLUMBIA RIVER HIGHWAY No. 100



Region 1 District 2C / Region 4 District 9

HISTORIC COLUMBIA RIVER HIGHWAY No. 100

Sheet 4 of 4
 July 2006



EQUATIONS: None	STATE HIGHWAY NO. 100		Urban Area
	TOTAL MILEAGE	72.37	
Located Line	6.23		0.00
Temporary Route	0.00		0.00
Existing Highway	66.14		7.77
ADDITIONAL MILEAGE	0.49		
Connections	0.49		
Frontage Roads	0.00		
EXCLUDED MILEAGE	29.72		
Located Line	6.23		
Temporary Route	0.00		
Roadway 2	23.49		

Note:
 Jurisdiction of intersecting local roads as of:
 Wasco Co. 2005
 Hood River Co. 2005
 Multnomah Co. 2005