

<p style="text-align: center;"><b>OREGON MODELING STEERING COMMITTEE</b> <b>FY 2004-05 Work Program</b></p>
---

## **INTRODUCTION**

The Oregon Modeling Steering Committee (OMSC) was formed in 1996 to provide direction and oversight to the Oregon statewide modeling program. Original members included the Federal Highway Administration, six state agencies, and the four metropolitan planning organizations (MPOs) in Oregon. The OMSC is currently composed of a technical and a policy representative of the following organizations:

- Governor's Economic Revitalization Team (GERT)
- OR Department of Administrative Services-Office of Economic Analysis (OEA)
- OR Department of Economic and Community Development (OECDD)
- OR Department of Environmental Quality (ODEQ)
- OR Department of Housing and Community Services (OHCS)
- OR Department of Land Use and Conservation (DLCD)
- OR Department of Transportation (ODOT)
- Portland Metro (Metro)
- Mid-Willamette Valley Council of Governments (MWVCOG)
- Lane Council of Governments (LCOG)
- Rogue Valley Council of Governments (RVCOG)
- Southwest Washington Regional Transportation Council (RTC)
- Port of Portland (POP)
- Federal Highway Administration (FHWA)

The role of the OMSC is to provide technical advice and expertise and to drive consistency and advancement in model application in Oregon. Close coordination with local constituencies is of great importance to the program. The first priority is to have tools that are used and understood at the level where they are most effective - with local/agency staff and elected officials.

This work plan is prepared to coincide with the July 1-June 30 fiscal year to allow for budget considerations for full OMSC participation and coordination of modeling elements of MPO Unified Planning Work Programs... The first annual work plan for the OMSC was prepared for fiscal year 2002-2003. It is intended to implement the Oregon Modeling Improvement Program Strategic Implementation Plan prepared in 2002. Annual reports summarize the accomplishments of the OMSC toward meeting the annual work plans. The strategic plan and annual reports can be viewed on the ODOT website at <http://www.odot.state.or.us/tddtpau/modeling.html>.

## **WORK PLANNING PROCESS**

The OMSC Long-Range Strategy Subcommittee met in February 2004 to define work activities for the coming year. This work plan was circulated to all OMSC members for comments and suggestions and it was discussed at the February quarterly OMSC meeting. This work plan identifies major efforts for the OMSC for FY 2004-05 and identifies special topic subcommittees that should be created to address specific topics.

## **OMSC WORK PLAN**

The work plan is organized by work items for the OMSC and for each standing subcommittee. Ad Hoc subcommittees and their roles are also addressed. An organization chart showing relationships of Standing and Ad Hoc Subcommittees is included at the end of the work program.

### **Oregon Modeling Steering Committee** – *Dick Walker/Metro, Chair; Richard Bjelland/OHCS, Vice-chair*

**Purpose:** Provide direction and oversight to the Oregon statewide modeling program. This cooperative effort maximizes the limited resources and expertise of the participating agencies/jurisdictions and helps develop consensus on uniform modeling practices and implementation across agency/jurisdictional lines and across the state.

All members of the OMSC are encouraged to:

- Promote state-of-the-art and state-of-the practice for modeling in Oregon.
- Look for opportunities to create efficiencies through partnerships, shared resources, cooperative projects, and other methods.
- Continue to work towards coordination of modeling efforts among all local, state and federal agencies and jurisdictions.
- Regularly discuss policy and application issues and opportunities and technical tools.
- Encourage and support multi-agency/jurisdiction projects and programs.
- Expand the focus of the OMSC from transportation modeling to include land use and economic modeling.
- Provide oversight to subcommittee activities.
- Provide training and build partnerships with private business to further the state of modeling.
- Anticipate and discuss current and future end user needs.
- Interpret results of modeling efforts to allow visualization of results for maximum and best use of modeling tools.
- Through education and advocacy, make modeling a standard tool and decision-making process with Oregon communities and agencies.

## **Standing Subcommittees**

### **Long-Range Strategy Subcommittee – Dick Walker/Metro, Chair**

**Purpose:** Responsible for annual work planning, strategic activities and OMSC membership.

#### ***OMSC Strategy***

- Prepare Annual Report of Accomplishments.
- Prepare Annual Work Plan.
- Coordinate with the Portland State University Oregon Transportation Center.
- Advocate for and support application of new modeling tools for complex policy questions and issues.

#### ***OMSC Image***

- Maintain technical credibility of modeling program and products.
- Represent OMSC in public forums.

#### ***Membership***

- As new MPOs, invite Bend and Corvallis to join the OMSC.
- With a new Center for Transportation, Portland State University will be an important link to research/development and outreach for transportation and land use modeling. To better integrate these programs, PSU will be invited to join the OMSC.
- Coordinate new OMSC member orientation.

### **Technical Services Subcommittee - Bill Upton/ODOT, Chair**

**Purpose:** Address technical model development, education, training and quality control.

#### ***Education and Training***

- Implement OMSC strategic education and training program.
- Inform OMSC members of education and training opportunities.
- Assist in coordination of education and training programs as requested.
- Coordinate the implementation of EPA's Mobile 6 emissions model with DEQ, Metro, ODOT and the other MPOs.
- Conduct formal training in integrating land use at the urban level, including JEM-in-R, urban models, Oregon1.8 and Oregon2.

#### ***Technical Documentation***

- Finalize Air Quality Conformity Modeling Format and Procedures.
- Prepare Integrated Analysis Guidelines that include models, development, application, post-processing and project level analysis.
- Update 5-Year Strategic Implementation Plan
- Solicit OMSC review of technical modeling documentation.

### ***Model Development and Analysis***

- Complete development of all Oregon models in R code.
- Provide information, coordination and regular updates for statewide and MPO model integration, including model integration of urban design variables, joint estimation model, and small urban estimation models.
- Keep OMSC members informed of developments and improvements from the Oregon1 and Oregon2 models.
- Support ODOT and OEA in review of OEA population and employment projections relative to using the integrated statewide model.
- Provide technical oversight for use of the statewide model in implementing the OTIA III bridge program.
- Provide technical oversight for use of the statewide model in updating the Oregon Transportation Plan.
- Advocate using the statewide model for prioritization of projects in the Statewide Transportation Improvement Plan (STIP).
- Consider integration of Housing Needs Model with integrated transportation/land use model.
- Integrate results of the Performance Measures research into modeling procedures.

### ***Agency/Jurisdiction Coordination***

- Expand coordination of Metro and MPO partnership agreements to maximize limited staff and other resources.
- Look for opportunities for joint projects among OMSC members.
- Support the Modeling Program Subcommittee to prepare coordinated modeling elements for Unified Planning Work Programs.
- Work with OEA and ODOT to investigate integration of statewide model and current OEA population/forecasting processes and allocation.

### ***Research***

- Coordinate OMSC participation in the Longitudinal Panel/Repeated Cross-section Survey discussion and implementation.
- Maintain and share information on OMSC research activities.
- Provide sponsorship for research funding applications and university collaboration.
- Coordinate research proposals with Portland State University to support Oregon modeling, OMSC members and to advance the PSU Center for Transportation.
- Share information on the POP/Metro freight origin-destination methodology research and data development project.
- Stay informed of National Cooperative Highway Research Program project on *Cost-Effective Measures and Planning Procedures for Travel Time, Delay and Reliability* through POP committee membership.

### ***Outreach and Information***

- Sponsor and support the Transportation Research Board Planning Applications Conference on 24-28 April 2005.

- Sponsor the 4<sup>th</sup> and final Oregon Modeling Symposium in 2005.
- Look for opportunities for presentations and professional articles on applications of the statewide model.
- Make a presentation to the Governor's Economic Revitalization Team on sustainability and modeling capabilities.
- Coordinate with the National Policy Consensus Center at Portland State University to provide information on the OMSC as a consensus model for transportation modeling.
- Prepare and make presentations on modeling issues, opportunities and results.
- Disseminate modeling information and results to broad and appropriate audiences.

**Performance Measures Subcommittee - Bud Reiff/LCOG, Chair**

**Purpose:** Address the environment and criteria under which models are applied, i.e., regulatory requirements and general application. Focal point for peer review.

***Policy Applications***

- Initiate conversations on development of policy and performance measures for public policy documents.

***Technical Model Applications***

- Coordinate requests from OMSC member organizations for OMSC support or review of modeling efforts or programs.

***Regulatory Issues***

- Develop performance measures that address compliance with the goals of the Transportation Planning Rule. This includes defining what *reliance on the single-occupant vehicle* means and how is it measured.

***Outreach and Information***

- Coordinate case studies for application issues.
- Focus OMSC Users Group on broad case study application.

**Ad Hoc Subcommittees for Special Topics**

**Purpose:** For issues that require personnel or expertise beyond the OMSC, or that are specific and complex issues, ad hoc subcommittees may be formed to implement activities of OMSC Standing Subcommittees. OMSC Standing Subcommittees will chair and provide oversight for ad hoc subcommittees. Following is a list of Ad Hoc Subcommittees and responsibilities recommended for FY 2004-05:

**Transportation Plan Performance Measures - Bud Reiff/LCOG, Chair**

- Complete research on performance measures to support Oregon transportation policies.
- Advocate for use of research results in the OTP update.

- Evaluate whether recommendations should be made by OMSC to revisit/modify Transportation Planning Rule requirements in light of research results.

**Longitudinal Panel/Repeated Cross-sectional Survey – Bill Upton/ODOT, Interim Chair**

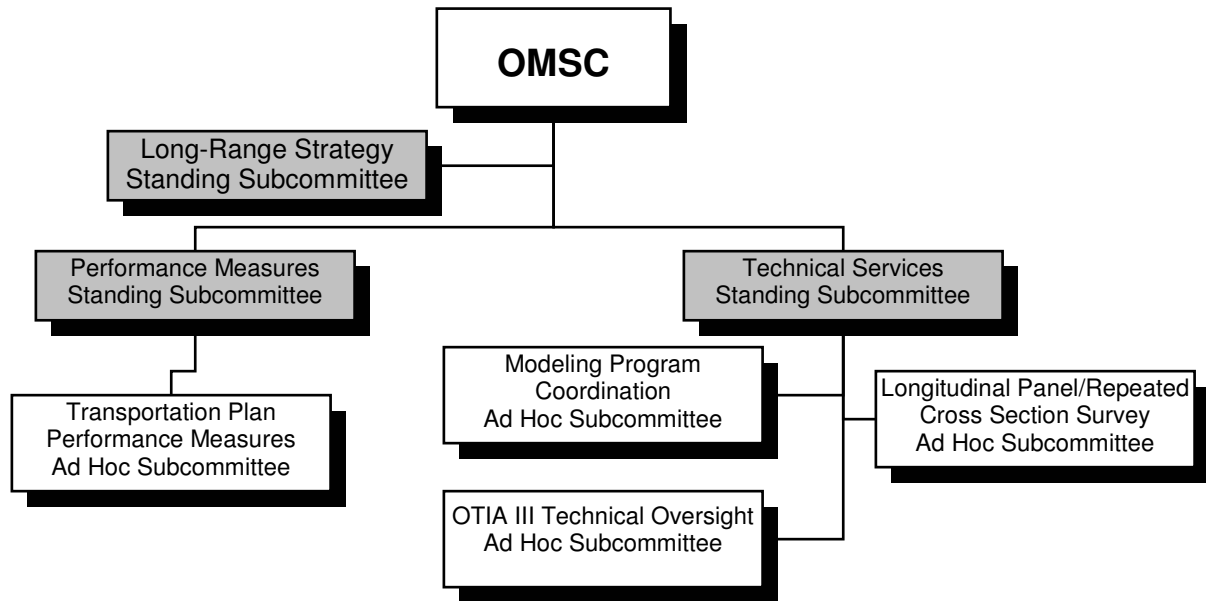
- Provide oversight for consultant selection and development of the LP/CSS.
- Coordinate OMSC members to fund and implement results of the LP/CSS.

**Modeling Program Coordination – Mike Jaffe/MWVCOG, Chair**

- Schedule annual meeting of MPOs and ODOT to coordinate modeling elements of Unified Planning Work Programs.
- Schedule interim reviews as necessary to update or modify work programs.
- Provide assistance, recommendations and oversight for preparing land use allocation tools for the MPO models.
- Continue to define and refine MPO/statewide model interface.
- Coordinate with MPOs, ODOT and DEQ to implement MOBILE 6.
- Provide forum for technical modeling discussions.

**OTIA III Technical Oversight – Bill Upton/ODOT, Chair**

- Provide assistance, recommendations and oversight on assumptions and analyses for application of the statewide model to develop and monitor performance measures, evaluate project packaging, and other tasks related to implementation of the OTIA III program.



**OREGON MODELING STEERING COMMITTEE  
2004-05 ORGANIZATION CHART**