

OREGON MODELING STEERING COMMITTEE 2006 ANNUAL REPORT

This report summarizes the activities completed in calendar year 2006 to accomplish the mission of the Oregon Modeling Steering Committee (OMSC). It summarizes progress on the five-year Strategic Implementation Plan completed in June 2002. These documents are available on the ODOT website at <http://www.odot.state.or.us/tddtpau/modeling.html>

MISSION STATEMENT

It is the mission of the Oregon Modeling Steering Committee to:

- Improve the state-of-the-practice and promote state-of-the-art land use and transportation modeling in the state of Oregon.
- Serve as a consensus forum and support group to coordinate the land use-transportation modeling efforts of federal, state, regional and local agencies.

The following goals and objectives guide the OMSC in meeting its mission:

Goal 1: Support to Decision-makers – Provide technical information and analyses to support informed decision-making.

Goal 2: Communication and Coordination – Provide a forum for exchange of ideas and to encourage use of and share current and future technology

Goal 3: Technical Excellence – Support research, development and application of models at the local, regional and statewide level, to improve and expand capabilities, integration and use of transportation models statewide.

Goal 4: Education and Training – Proactively promote and educate modelers on the capabilities of transportation modeling as an analytical tool to support decision-making, through coursework, training, symposiums and case studies. Inform policy-makers of analysis as an objective technical support for decision-making.

Goal 5: Peer Coordination and Support – Serve as a technical and professional support group to members, agencies, local governments, consultants and others to further transportation modeling knowledge and expertise, and to maximize resources.

MEMBERSHIP

The OMSC is composed of technical and policy representatives of the following organizations. For 2006, the following representatives were members of the OMSC:

- OR Department of Administrative Services-Office of Economic Analysis (OEA) - Dae Baek/Tom Potiowsky
- OR Department of Economic and Community Development (OECDD) – John Gorlorwulu
- OR Department of Environmental Quality (ODEQ) - Dave Nordberg/Annette Liebe

- OR Department of Housing and Community Development (OHCDD) - Richard Bjelland/David Foster
- OR Department of Land Use and Conservation (DLCD) - Bob Cortright
- OR Department of Transportation (ODOT) - Bill Upton/Brian Dunn
- OR Governor's Economic Revitalization Team (GERT) - Gabrielle Schiffer
- Metro – Jennifer John/Dick Walker
- Mid-Willamette Valley Council of Governments (MWVCOG) – Ray Jackson/Richard Schmid
- Lane Council of Governments (LCOG) - Bud Reiff/Tom Schwetz
- Rogue Valley Council of Governments (RVCOG) - Matt Hermen/Dan Moore
- Corvallis Area Metropolitan Planning Organization (CAMPO) – Carl Switzer/Ali Bonakdar
- Bend Area Metropolitan Planning Organization (BAMPO) – Tyler Deke
- Southwest Washington Regional Transportation Council (RTC) - Shinwon Kim/Dean Lookingbill
- Port of Portland (POP) – Scott Drumm/Susie Lahsene
- Federal Highway Administration (FHWA) – Satvinder Sandhu/Jon Young
- Portland State University (PSU) – Robert Bertini-John Gliebe/James Strathman

ORGANIZATION

The OMSC completes its work through standing and special topic subcommittees and through broad discussions at quarterly meetings of the full committee (see graphic at end of report). To avoid meeting during the holiday season and spring break, the OMSC shifted its regular meeting date and met only three times in 2006 – April 19, July 19, and October 18.

The roles and responsibilities of the OMSC subcommittees were modified and refined in the work planning effort for 2006. A Professional Development Standing Subcommittee was created to focus technical model development, education, training and quality control. The Oregon Modeling Users Group is an informal forum coordinated by ODOT for technical staff of agencies, jurisdictions and private interests to share modeling and analysis information and training. This Group was brought under the OMSC Subcommittee to bring OMSC resources to facilitate regularly scheduled quarterly meetings. Responsibilities of the Technical Standing Subcommittee were distributed among the other standing subcommittees to focus different technical activities more appropriately.

Officers for 2006 were:

- OMSC Chair, Bill Upton/ODOT
- OMSC Vice-chair, Richard Bjelland/OHCD
- Long-Range Strategy Standing Subcommittee Chair, Bill Upton/ODOT
- Professional Development Standing Subcommittee Chair, Carl Switzer/CAMPO-Ray Jackson/MWVCOG
- Applications Standing Subcommittee Chair, Bud Reiff/LCOG
- Modeling Program Coordination Standing Subcommittee Chair, Dick Walker/Metro

OMSC STANDING COMMITTEE ACCOMPLISHMENTS

The accomplishments of the four standing subcommittees are summarized here.

Long-range Strategy – *Bill Upton/Chair, Richard Bjelland/Vice-chair*

Purpose: Responsible for annual work planning, strategic activities and OMSC membership.

Annual Report and Work Planning

- The OMSC prepared an annual report of 2005 accomplishments to document implementation of the annual work program.
- The work program prepared for FY 2006 revisited standing subcommittees and refined roles and responsibilities.

Strategic Activities

- OMSC members participated in interviews for a new PSU faculty member with a focus on modeling.

Membership

- Ray Jackson replaced Mike Jaffe, representing Mid-Willamette Valley COG.
- Carl Switzer left Corvallis Area MPO mid-year.
- Brian Dunn replaced Jerri Bohard as the policy representative for ODOT.
- State agency representatives who changed employment and created vacancies on the OMSC include Michael Burton/OECDD and Tom Potowski/OEA.

Professional Development – *Carl Switzer/CAMPO-Ray Jackson/MWVCOG, Chair*

Purpose: Address technical model development, education, training and quality control.

- An organizational meeting was held with the Oregon Modeling Users Group to brainstorm meeting topics and establish regular quarterly meeting dates and times. Two meetings of the OMUG were held in 2006.
- Suggestions for technical training topics are being solicited for future OMUG meetings.

Applications - *Bud Reiff/LCOG, Chair*

Purpose: Address the environment and criteria under which models are applied, i.e., regulatory requirements and general application. Focal point for peer review.

Peer Review

- Peer review was conducted for the Land Use Scenario Developer (LUSDR) model developed by ODOT for the Medford area. Participants included the statewide model team and Metro staff.
- Peer review will be scheduled for models developed for Bend, Albany and Corvallis.

Research

- LCOG is coordinating with OTREC and the OMSC to propose a research project to explore practical software and procedures for multi-level modeling of regional travel demand and traffic simulation in urban corridors. This research proposal was submitted to the ODOT Research Unit for FY08 funding consideration.
- ODOT provided regular updates on the ODOT Research Advisory Committee.

Modeling Program Coordination Subcommittee, Dick Walker/Metro, Chair

Purpose: Provide a technical and interactive forum for discussion of model development and application issues for MPOs and ODOT.

- ODOT and MPOs regularly shared information on modeling projects and issues.
- MPC provided a forum for discussion on how the MPOs can assist ODOT in development of the OTP performance measures and data collection. ODOT OTP staff held two meetings to explore this collaborative opportunity.
- Becky Knudson/ODOT and Eric Moore/OR Employment Department gave a presentation on the *On the Map* program, a joint project between the US Census Bureau, participating states, and Cornell University. *On the Map* is an interactive mapping application to show where people work and live with comparison reports on their age, earnings and industry distributions.
- The MPC offered to be a resource as the new MPOs, CAMPO and BMPO, develop their TSPs
- The MPC discussed what different agencies are using for model code now and what is being planned for the future. It was agreed that it is not important that everyone use the same code.
- The MPC provided a forum for the MPOs and ODOT to talk about the move to VISUM software. Salem, Metro and ODOT have licenses and other MPOs are interested. The MPC shared current thinking about how the transition to the new software will occur.
- The MPC brainstormed with ODOT on issues that should be addressed as TPAU develops a Strategic Plan.
- The MPC provided a forum for discussion with the statewide modeling team on issues and opportunities for cooperation and coordination between the statewide and MPO models.
- The MPC brainstormed on issues to be addressed in future MPC meetings.
- Because all MPOs are members of the MPC, this Subcommittee provided a forum for discussion and review of OHAS strategies, timing, and funding.

AD HOC SUBCOMMITTEE ACCOMPLISHMENTS

Ad Hoc subcommittees are chaired by an OMSC member but usually include broader membership than the OMSC. They are formed to address specific and complex issues, where personnel or expertise beyond the OMSC is desirable. Ad Hoc Subcommittees in 2006 included:

Oregon Household Activity Survey (OHAS) Subcommittee – Bill Upton/ODOT, Dick Walker/Metro, Co-Chairs

Purpose: Provide oversight for development and implementation of the Oregon statewide survey.

Formerly the Continuous Survey for Modeling in Oregon (COSMO) Subcommittee, OHAS built on pilot surveys and discussions to prepare a work plan that can be the basis for a Request for Proposals (RFP), and to establish a budget and schedule to conduct a statewide survey. ODOT will use the information from the OHAS to prepare the RFP

and conduct consultant selection. Surveys in the Portland Metro area will be delayed due to the transit mall light rail construction, but it is hoped that the statewide survey can begin in other parts of the state in 2007. Information will be developed for MPOs to use to support funding discussions within their organizations.

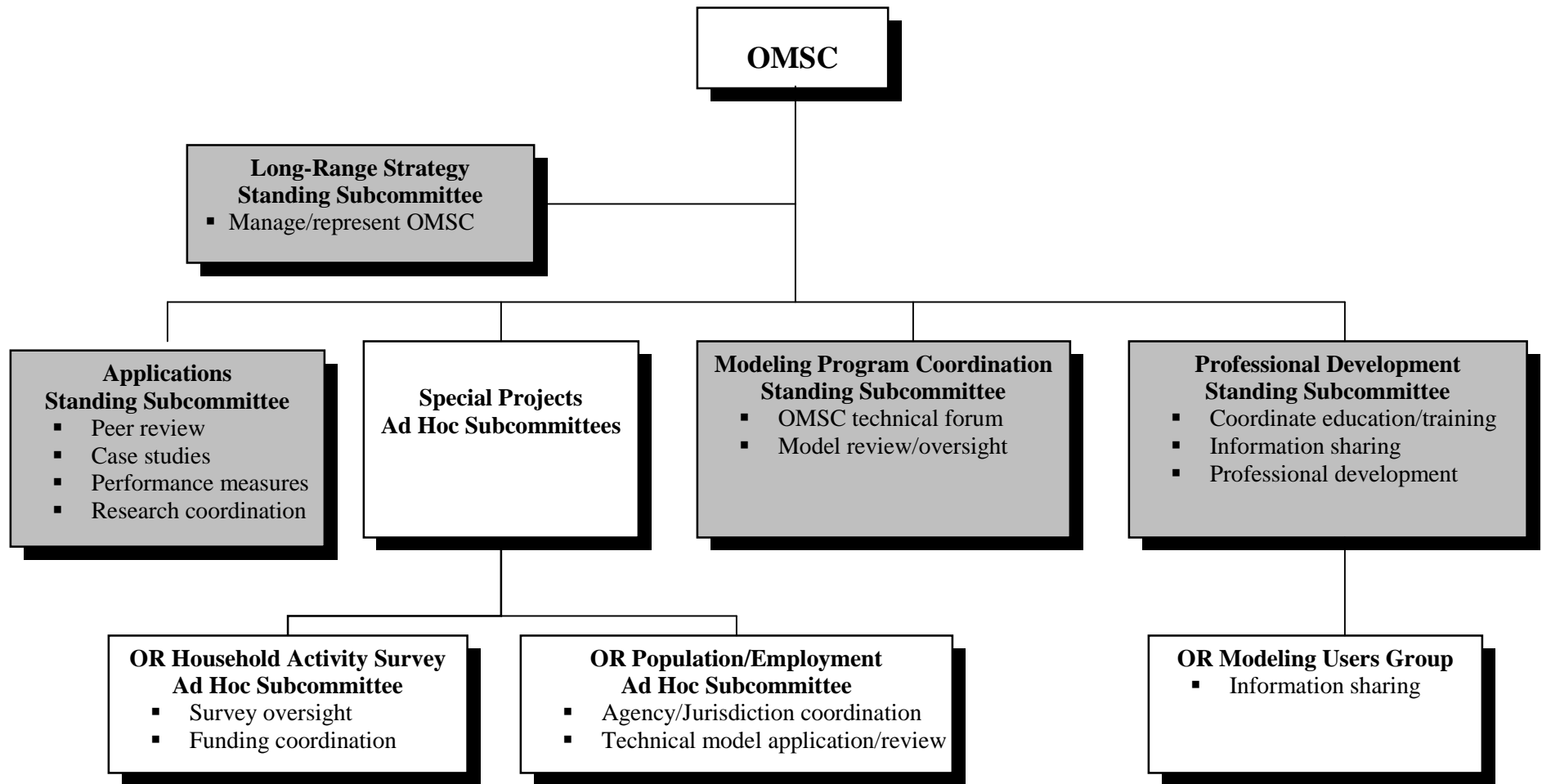
Oregon Population and Employment Ad Hoc Subcommittee

Purpose: Coordinate discussions with OEA on use of modeling tools for Oregon population and employment projections.

This Subcommittee did not meet in 2006.

OTHER ACTIVITIES

- Regular updates and copies of the draft Oregon Transportation Plan were provided to the OMSC by ODOT staff.
- Dick Walker, a member of the Transportation Research Board/National Research Council Committee on Determination of the State of the Practice in Metropolitan Area Travel Forecasting, gave a report on a web-based survey that is being completed by each modeling agency in the country. The survey will obtain understanding on common modeling practice in the United States. Results of the survey will be provided to the OMSC as they become available.
- Regular updates were provided by Portland State University on the University Transportation Center (UTC), authorized as part of SAFETEA-LU. A Strategic Plan was prepared and submitted to the USDOT's Research and Innovative Technology Administration (RITA), the federal agency that oversees the UTCs. The Oregon UTC adopted the name Oregon Transportation Research and Education Consortium (OTREC).
- The OMSC received a report on the Innovative Transport Modeling Conference held in May and sponsored by the Transportation Research Board (TRB) and the federal Transportation Model Improvement Program (TMIP) program. The conference was intended to pose questions about what it takes to get activity-based models into practice and the experiences of different groups around the country.
- Brian Gregor gave a presentation on a new model – Land Use Scenario Developer (LUSDR). This is a stochastic microsimulation of household and business location to support strategic land use and transportation planning. It can be used like a land use model but it is intended to support strategic planning. The model was developed for generic use and it is being applied for the Jackson County Regional Problem Solving (RPS) Study.
- Richard Bjelland gave a presentation on demographic changes that are occurring in the United States and in Oregon. He explored the rates of change, the likely factors driving these changes, and some of the potential impacts of these changes.



2006 Organization Chart for the Oregon Modeling Steering Committee