

# **OREGON MODELING STEERING COMMITTEE**

## **FY 2008-09 Work Program**

### **INTRODUCTION**

The Oregon Modeling Steering Committee (OMSC) was formed in 1996 to provide direction and oversight to the Oregon statewide modeling program. The OMSC is currently composed of representatives of the following organizations:

- OR Department of Administrative Services-Office of Economic Analysis (OEA)
- OR Department of Economic and Community Development (OECDD)
- OR Department of Environmental Quality (ODEQ)
- OR Department of Housing and Community Services (OHCS)
- OR Department of Land Use and Conservation (DLCD)
- OR Department of Transportation (ODOT)
- Governor's Economic Revitalization Team (GERT)
- Portland Metro (Metro)
- Mid-Willamette Valley Council of Governments (MWVCOG)
- Lane Council of Governments (LCOG)
- Rogue Valley Council of Governments (RVCOG)
- Corvallis Area Metropolitan Planning Organization (CAMPO)
- Bend Metropolitan Planning Organization (BMPO)
- Southwest Washington Regional Transportation Council (RTC)
- Port of Portland (POP)
- Portland State University (PSU)/Oregon Transportation Research & Education Consortium (OTREC)
- Federal Highway Administration (FHWA)

It is the mission of the OMSC to:

- Improve the state-of-the-practice and promote state-of-the-art land use and transportation modeling in the state of Oregon.
- Serve as a consensus forum and support group to coordinate the land use-transportation modeling efforts of federal, state, regional and local agencies.

Much of the work of the OMSC is conducted through subcommittees. This work program is intended to define the roles and responsibilities of these committees and to provide guidance to the OMSC and its subcommittees to meet the OMSC mission. Annual reports summarize the accomplishments of the OMSC toward meeting its annual work plans. The OMSC strategic plan and annual reports can be viewed at <http://www.oregon.gov/ODOT/TD/TP/OMSC.shtml>.

## **OMSC WORK PROGRAM**

The OMSC Long-Range Strategy Subcommittee recommended this work program to the OMSC consideration at its April quarterly meeting. The work program lists the purpose and general responsibilities of the OMSC and each subcommittee. Specific tasks for FY2008-09 are listed for each subcommittee. An organization chart showing relationships of OMSC Subcommittees is included at the end of the work program.

### **Oregon Modeling Steering Committee**

***Purpose:*** Provide direction and oversight to the Oregon statewide modeling program. This cooperative effort maximizes the limited resources and expertise of the participating agencies/jurisdictions and helps develop consensus on uniform modeling practices and implementation across agency/jurisdictional lines and across the state.

***Responsibilities:*** All members of the OMSC are encouraged to:

- Promote state-of-the-art and state-of-the practice for modeling in Oregon for both rural and urban environments.
- Look for opportunities to create efficiencies through partnerships, shared resources, cooperative projects, and other methods.
- Work towards coordination of modeling efforts among all local, state and federal agencies and jurisdictions.
- Regularly discuss policy and application issues and opportunities, and technical tools.
- Encourage and support multi-agency/jurisdiction projects and programs.
- Expand the focus of the OMSC from transportation modeling to include land use and economic modeling as they relate to transportation.
- Provide oversight to subcommittee activities.
- Provide training and build private business partnerships to further the state of modeling.
- Collaboratively define, anticipate and discuss current and future end user needs.
- Interpret results of modeling efforts to allow visualization of results for maximum and best use of modeling tools.
- Through education and advocacy, make modeling a standard tool and decision-making process for Oregon communities and agencies.

***FY2008-09 Focus:***

- Engage OTREC faculty to share research projects at quarterly OMSC meetings.
- Evaluate the family of analysis tools available in OR and advocate for expanded use of tools in the appropriate ways.
- Engage speakers and presenters for quarterly meetings to keep abreast of emerging issues, such as the Big Look and climate change.

### **Standing Subcommittees**

Three standing subcommittees perform much of the work of the OMSC.

### **Long-Range Strategy Subcommittee**

**Purpose:** Responsible for annual work planning, strategic activities and OMSC membership.

**Responsibilities:**

- Develop quarterly meeting agendas
- Facilitate discussion and reevaluation of OMSC mission, role and responsibilities.
- Prepare Annual Report of Accomplishments and Annual Work Program.
- Represent OMSC in public forums.
- Identify potential new OMSC members and coordinate new member orientation.

**FY2008-09 Focus:**

- Evaluate appropriate membership and consider ways to fully engage members
- Discuss transition of OMSC leadership.

### **Professional Development Subcommittee**

**Purpose:** Address technical model development, education, training and quality control.

**Responsibilities:**

- Inform OMSC members of education and training opportunities.
- Assist in coordination of education and training programs as requested.
- Keep OMSC members informed of developments and improvements for Oregon models through quarterly meeting updates.
- Coordinate university collaboration for the Modeling Symposium, seminars, other cooperative endeavors.
- Encourage OMSC members to give presentations and submit professional articles on applications of Oregon models and modeling program.
- Serve as chair of the Oregon Modeling Users Group (OMUG) and coordinate speakers and membership.

**FY2008-09 Focus:**

- Coordinate and facilitate OMUG to share information with technical staff of agencies, jurisdictions and private interests.
- Coordinate with OTREC and OMSC members for the 19-20 June 2008 5<sup>th</sup> Oregon Modeling Symposium.
- Explore opportunities for broader technical/training discussions.

### **Applications Subcommittee**

**Purpose:** Address the environment and criteria under which models are applied, i.e., regulatory requirements and general application. Focal point for peer review and research.

**Responsibilities:**

- Coordinate development of policy and performance measures for public policy documents.
- Coordinate requests for OMSC support or review of modeling efforts or programs.
- Coordinate OMSC review and comment on regulatory issues that affect or are informed by modeling development and application.

- Develop and maintain an on-going list of research projects and proposals from OMSC members.
- Provide OMSC sponsorship for research funding applications.

***FY2008-09 Focus:***

- Coordinate research proposals with ODOT Research Unit and OTREC.
- Develop an on-going list of research projects and proposals from OMSC members.
- Coordinate peer review of new MPO and small city models.

**Modeling Program Coordination Subcommittee**

***Purpose:*** Provide a technical and interactive forum for discussion of model development and application issues for MPOs and ODOT.

***Responsibilities:***

- Provide forum for technical modeling discussions.
- Conduct an annual meeting and interim reviews for MPOs and ODOT to coordinate technical modeling programs and activities.
- Coordinate OMSC review of procedures and guidelines for use and application of models, development, application, post-processing and project level analysis.
- Look for opportunities for joint projects among OMSC members.

***FY2008-09 Focus:***

- Continue to define and refine MPO/statewide model coordination.
- Provide input and support for the OR Household Activities Survey Subcommittee.

**Ad Hoc Subcommittees for Special Topics for FY2008-09**

For issues that require personnel or expertise beyond the OMSC, or that are specific and complex issues, ad hoc subcommittees may be formed to implement activities of the OMSC. Ad Hoc Subcommittees will be chaired by an OMSC member and may include OMSC members and non-members. Following is a list of Ad Hoc Subcommittees and responsibilities recommended for FY2008-09.

**Oregon Household Activities Survey Ad Hoc Subcommittee**

***Purpose:*** Provide oversight for development and implementation of the Oregon statewide survey.

***Responsibilities:***

- Provide oversight for consultant selection, development and implementation of the statewide survey.
- Coordinate funding of the survey.
- Oversee technical working group to work closely with selected consultant team.

***FY2008-09 Focus:***

- Work with ODOT as project manager to identify funding and coordinate initiation of the OHAS, and provide oversight to the OHAS program.

**Oregon Modeling Users Group**

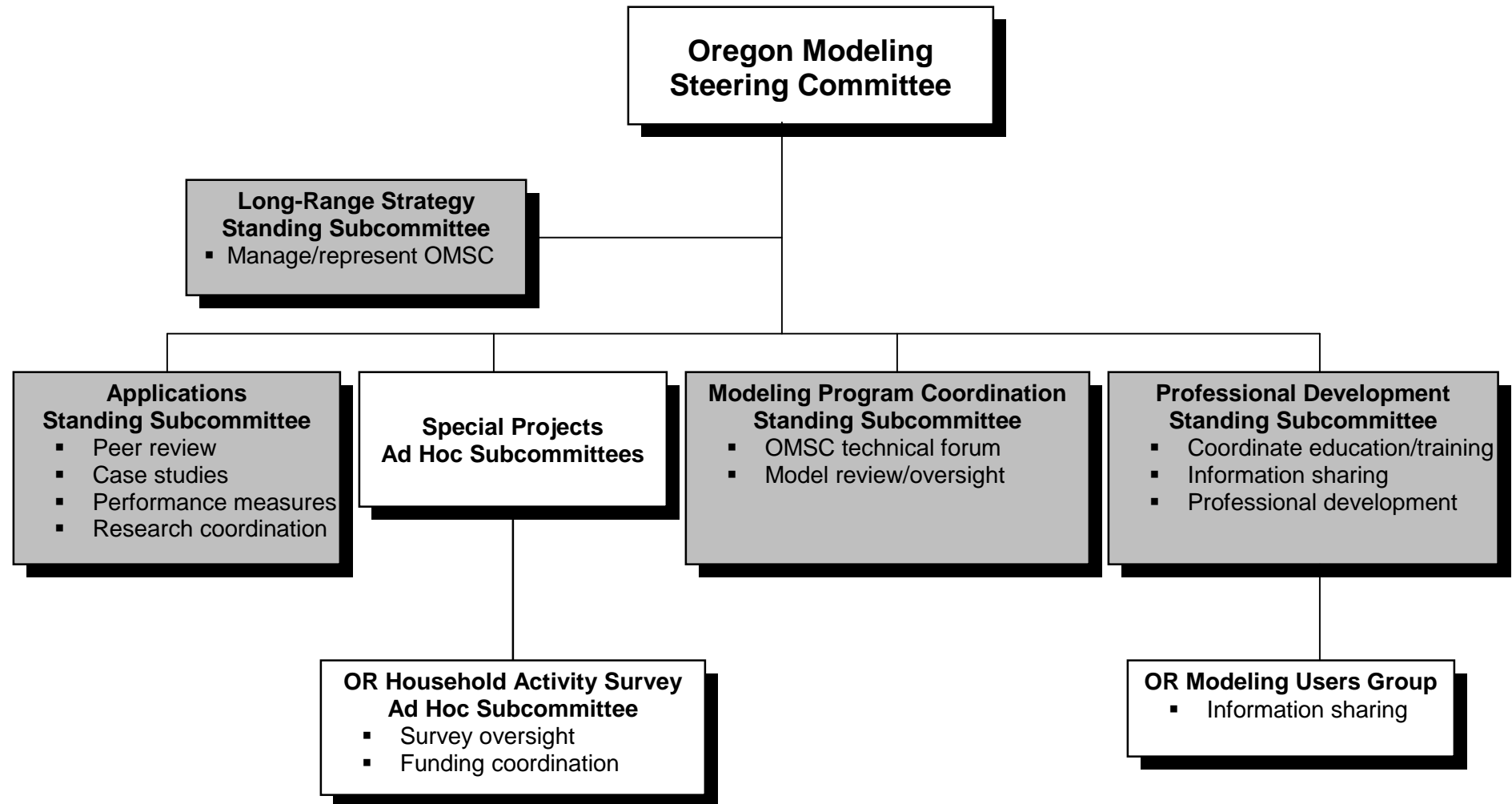
***Purpose:*** Facilitate and encourage broad discussion and ideas on development and implementation of Oregon models throughout the Oregon modeling community.

***Responsibilities:***

- Organize and facilitate quarterly Group meetings
- Encourage broad participation in the Group by public and private interests involved in modeling in Oregon.
- Look for training and education opportunities by and for Group participants.

***FY2008-09 Focus:***

- Coordinate speakers and scheduling of quarterly meetings of the OMUG.
- Look for opportunities for training and information sharing on technical tools for air quality modeling and measurement.



**FY2008-09 Organization Chart for the Oregon Modeling Steering Committee**