



SPR Quarterly Progress Report
April 1, 2009 through June 30, 2009

Date July 2, 2009

TO: Technical Advisory Committee Members:

Michelle Eraut, FHWA
Matthew Mabey, ODOT
Chris Maguire, ODOT
Tim Swift, ODOT
Rick Williams, ODOT
Simon Wray, ODFW

FROM: Matthew Mabey, Research Coordinator; phone: (503) 986-2847

1. Project

Wildlife Movement Study
SPR 638

2. Key Dates

Start Date for ODOT: April 6, 2005
Completion Date for ODOT: June 30, 2010

3. Principal Investigators

DeWaine Jackson, ODFW

4. Progress

- Hired 2 new staff to replace personnel that were promoted within the agency.
- See attached sheet for current summary of road-kill data.

5. Problems

- Fixed-wing monitoring flights continue to be sporadic – due to aircraft and personnel availability.

6. Work Planned for Next Quarter

- Key-punch all Spring 2009 road-kill data.
- Continue to monitor radio-collared deer and recover scheduled drop-off collars.
- Continue “summer range” capture of deer.

7. **Finances**

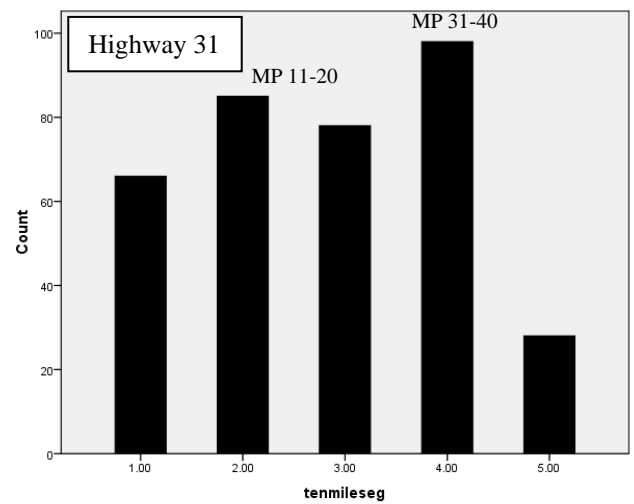
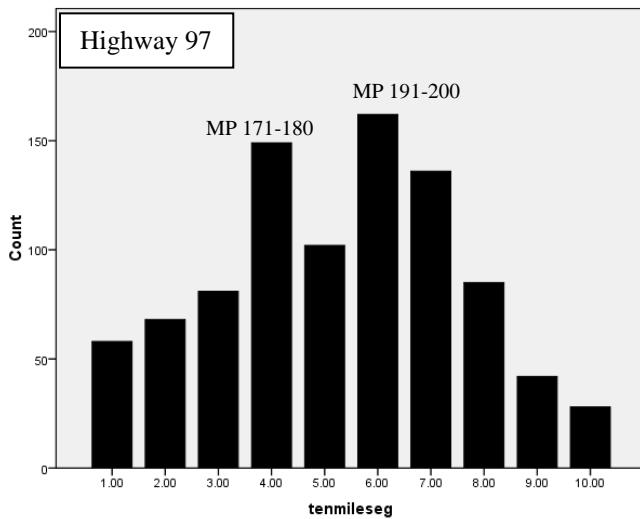
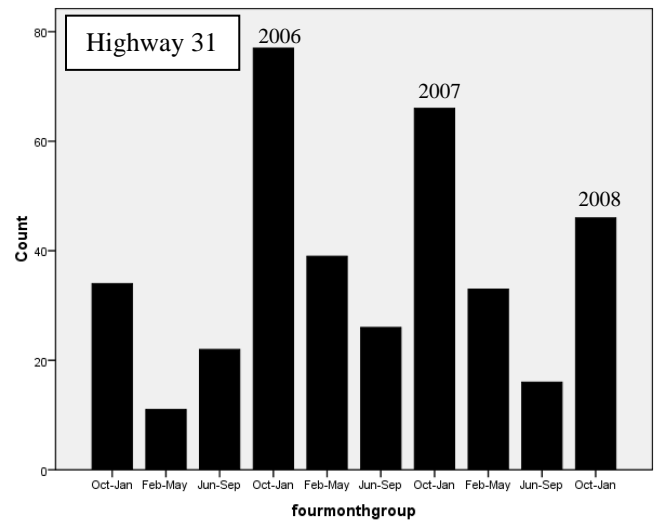
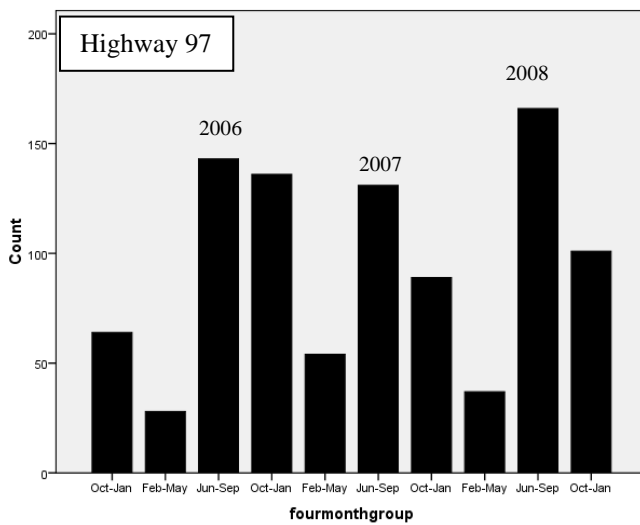
SPR Project Summary

VENDOR	FY05	FY06	FY'07	FY'08	FY'09	TOTALS
ORIGINAL BUDGET	\$ -	\$ -	\$ -		\$ -	\$ -
REVISED BUDGET	\$ -	\$ -	\$ -		\$ -	\$ -
EXPENDITURES - VENDOR	\$ -	\$ -	\$ -	\$ -	\$ -	\$ -
BALANCE	\$ -	\$ -	\$ -	\$ -	\$ -	\$ -

ODOT	FY05	FY06	FY'07	FY'08	FY'09	TOTALS
ORIGINAL BUDGET	\$ 50,000	\$ 50,000	\$ -	\$ -	\$ -	\$ 100,000
REVISED BUDGET	\$ 4,134	\$ 106,007	\$ 4,534	\$ 5,777	\$ 3,731	\$ 124,183
EXPENDITURES - ODOT	\$ 4,134	\$ 106,007	\$ 4,534	\$ 5,777	\$ 3,731	\$ 124,183
BALANCE	\$ -	\$ -	\$ -	\$ -	\$ -	\$ -

PROJECT	FY05	FY06	FY'07	FY'08	FY'09	TOTALS
ORIGINAL BUDGET	\$ 50,000	\$ 50,000	\$ -	\$ -	\$ -	\$ 100,000
REVISED BUDGET	\$ 4,134	\$ 106,007	\$ 4,534	\$ 5,777	\$ 3,731	\$ 124,183
EXPENDITURES - PROJECT	\$ 4,134	\$ 106,007	\$ 4,534	\$ 5,777	\$ 3,731	\$ 124,183
BALANCE	\$ -	\$ -	\$ -	\$ -	\$ -	\$ -

Update of mule deer road-kill data collected by ODOT and ODFW October 2005 – January 2009. The first 2 graphs indicate the number of road-killed deer by 4-month time blocks on 100 miles of Highway 97 (south end of Bend to approx. Spring Hill) and 50 miles of Highway 31 (starting at 97-31 junction going toward Silver Lake). Consistently, the highest road-kill periods on Highway 97 are during June - September and October - January on Highway 31. This potentially reflects that Highway 31 is positioned within the winter-range and deer strikes continue later in the year than along Highway 97. The second set of graphs indicate the 10-mile segment, road-kill deer numbers. There was no selection of particular 10-mile segments, instead the segments start at the lowest milepost and increase sequentially. It is very likely that by examining all possible 10-mile segments within the 100-mile and 50-mile ranges, the “true” highest road-kill segment would be detected.



Update of mule deer road-kill data collected by ODOT and ODFW October 2005 – January 2009. This table summarizes road-killed deer on 100 miles of Highway 97 (south end of Bend to approx. Spring Hill) and 50 miles of Highway 31 (starting at 97-31 junction going toward Silver Lake).

Highway	Female deer	Male deer	Unknown	Total
97 (100 miles)	443 (62%)	267 (38%)	239	949
31 (50 miles)	159 (69%)	70 (31%)	141	370

This graph indicates the annual number of road-killed mule deer on Highway 97 (100 miles) and 31 (50 miles) during October 2005 – January 2009. Project started in October 2005. Consistently, 400 deer are being road-killed annually on this 150 miles of highway.

