

Roads Scholar Level 2

The *Roads Scholar* Level 2 program consists of eight (8) core classes. Each class is six hours in length and will be offered as needed throughout Oregon. Following is a brief summary of the Level 2 classes.

RS-11 Workplace Safety Training 1

RS-12 Workplace Safety Training 2

These two classes cover workplace safety training on topics that include hazard communication, confined space entry, excavation and trenching, scaffold safety awareness, use of stairways and ladders, electrical safety awareness, use of bucket trucks, biohazard safety and fall protection.

RS-13 Advanced WZ Traffic Control

Class covers traffic control regulations, traffic control principles, traffic control devices, traffic control plans, evaluation of traffic control plans, flagging requirements and legal consequences.

RS-14 Roadway Safety Fundamentals 1

RS-15 Roadway Safety Fundamentals 2

These two classes cover crash data, tort liability, speed limits, traffic control devices, pavement markings, pedestrian safety, school area safety, railroad crossings, access management, parking, traffic impact analysis, traffic calming, vegeta-

tion control, drainage features and road-side barriers.

RS-16 Roadway Materials

An in-depth introduction to soils and aggregates that includes soil-water interaction, rock types, aggregate properties, proper handling, stockpiling, placement and compaction of materials, stabilization, modification and use of geosynthetics.

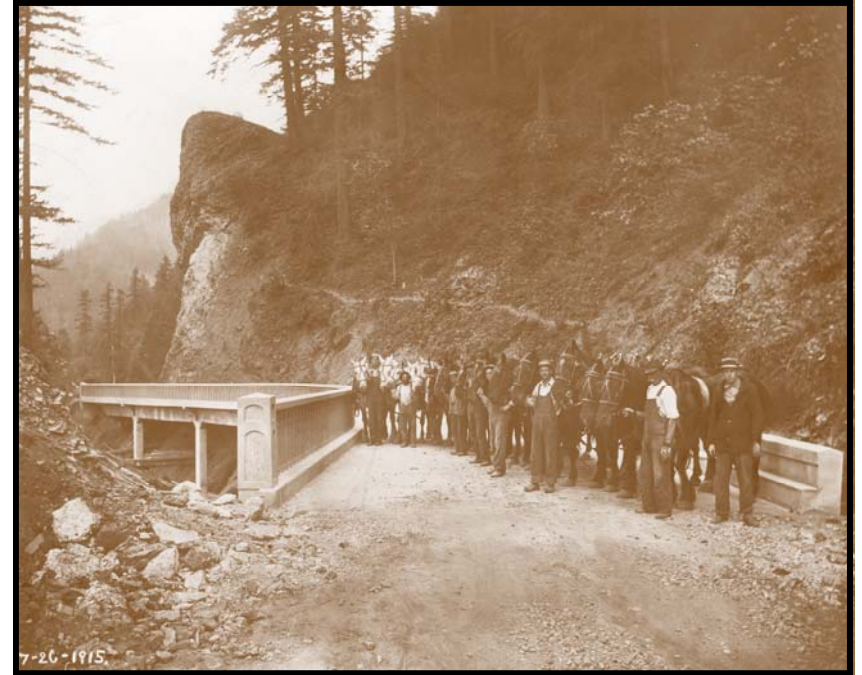
RS-17 Bridge Inspection, Maintenance and Repair

Introduction to how a typical bridge structure works, understanding bridge inspection reports, preventive maintenance activity and minor repairs and performing emergency inspections.

RS-18 Winter Road Maintenance

Winter maintenance training that includes anti-icing, material selection, equipment maintenance, proper plowing techniques, de-icing, winter maintenance management and use of performance measures.

Oregon T2 Center's *Roads Scholar* Program



Helping to Expand Knowledge and Improve Skills in Roadway Maintenance



Oregon Technology Transfer Center

200 Hawthorne SE, Suite B-240

Salem, Oregon 97301-5192

Phone (503) 986-2855

Fax (503) 986-2844

http://www.oregon.gov/ODOT/TD/TP_T2/



T2 Assistant—Rebekah Clack
Rebekah.a.clack@odot.state.or.us

T2 Director—Bob Rath
Bob.raths@odot.state.or.us

Roads Scholar Program Overview

Program Description

Local governments in the state of Oregon are responsible for maintaining over 33,000 miles of roads and streets (60% of the total public road mileage in the state). As Oregon grows and traffic increases, more diverse skills are needed for roadway maintenance activities.



The Oregon *Roads Scholar* Program provides local agency transportation workers with the latest information on road maintenance procedures and technologies. Through the *Roads Scholar* Program, local government personnel can enhance their maintenance skills and expand their knowledge by attending training sessions on current procedures and the latest technologies.

Roads Scholar classes are offered on a regular basis at convenient locations throughout Oregon. Courses are taught by training specialists who are well versed in the latest developments and technologies. In most instances, the T2 Center provides this training free of charge to local government agencies.

Program Requirements

The Oregon *Roads Scholar* Program currently consists of a Level 1 and a Level 2 program. To receive a Level 1 certificate, participants must complete ten core classes within five years. A level 2 certificate requires completion of eight core classes within a five year period.

To attend Level 2 classes, participants are required to have completed the Level 1 program. Others who are close to completing the Level 1 program may also attend Level 2 classes with prior approval of the T2 Center.

Upon completion of both the Level 1 and Level 2 program requirements, graduates will receive *Roads Scholar* certificates to document their continuing education and professional development. Sponsoring agencies will also receive a plaque listing the employees who have successfully completed the programs.

The Oregon T2 Center's *Roads Scholar* Program provides up-to-date road maintenance and safety related training for local government personnel.

The *Roads Scholar* Program is designed to acknowledge local agency maintenance personnel who are committed to learning new skills and expanding their knowledge of road maintenance technology.

To get started, fill out a *Roads Scholar* registration form available on our website and fax it to the T2 Center.



Roads Scholar Level 1

The *Roads Scholar* Level 1 program consists of ten (10) core classes. Each class is four hours in length and are offered regularly by the Oregon T2 Center at convenient locations throughout Oregon. Following is a brief summary of the Level 1 classes.

RS-1 Basics of a Good Road

Overview of the topics of traffic, road geometrics, drainage, materials and pavements.

RS-2 Drainage: Key to Roads that Last
Addresses the effect of water on roadways and how to deal with it.

RS-3 Paving Materials
Introduces key properties of aggregates and the various binders available in order to produce good paving material.

RS-4 Environmental BMPs 1
Overview of Best Management Practices available to minimize the impact of maintenance activities on water quality.

RS-5 Asphalt Pavement Maintenance 1
Reviews the types of asphalt pavements and the causes of pavement distress. Presents corrective pavement practices including inlay, blade, machine patching and crack filling.

RS-6 Asphalt Pavement Maintenance 2
Reviews the types of asphalt pavements and the causes of pavement distress. Presents preventive maintenance alternatives including fog, slurry and chip seals.

RS-7 Effective Communication Skills
An introduction to effective communication with pointers for improving listening, speaking and writing skills.

RS-8 Environmental BMPs 2
Overview of environmentally friendly Best Management Practices pertaining to erosion control and vegetation management.

RS-9 Maintenance Mathematics
A refresher for public works employees that uses basic mathematics to provide solutions to common maintenance problems encountered in the field.

RS-10 Introduction to Survey and Grade Checking
Introduction of basic surveying techniques including measuring, calculating elevations and slope staking.

