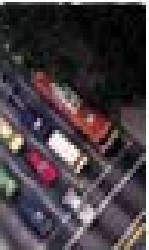




Oregon Technology Transfer Center



PUBLICATIONS LENDING LIBRARY 2007 CATALOGUE

*Providing local governments with
information on transportation
related topics.*

Oregon T2 Center

Oregon Department of Transportation
200 Hawthorne Avenue SE, Suite B-240
Salem, Oregon 97301-5192

(503) 986-2855 (office main)
1 (800) 544-7134 (in state)

http://www.oregon.gov/ODOT/TD/TP_T2

A Basic Asphalt Emulsion Manual, Asphalt Emulsions Manual No. 19, Third Edition

2002 AI, AEMA Pub/Hardcopy Pages 120

The primary purpose of this manual is to impart a basic understanding of asphalt emulsions to those who work with the product. A thorough study of the manual should enable one to recommend where, when and how emulsions should be used. It also should aid in the solving of problems that may arise on projects in which emulsions are used.

A Guide for Accommodating Utilities Within Highway Right-of-Way

1994 AASHTO Pub/Hardcopy Pages 27

A guideline to assist the various highway agencies in establishing and administering reasonable uniform utility accommodation policies.

A Guide for Erecting Mailboxes on Highways

1984 AASHTO Pub/Hardcopy Pages 36

Principles and guidelines for setting up mailboxes along highways.

A Guidebook for Residential Traffic Management

1994 WDOT Pub/Hardcopy Pages 113

This report provides a comprehensive reference on initiating and running a residential traffic management program. For reference, an appendices is included.

A Policy on Geometric Design of Highways and Streets

2001 AASHTO Pub/Hardcopy Pages 871

This policy is to provide guidance to the designer by referencing a recommended range of values for critical dimensions. This is not a detailed design manual.

A Review of Pedestrian Safety Research in the United States and Abroad

2004 FHWA Pub/Hardcopy Pages 150

An overview of research studies on pedestrian safety in the U.S.

Access Management CD Library

2000 FHWA, Tech America Corp. Pub/CD Format

Accessible Rights-of-Way: A Design Guide

1999 US Architectural and Transportation Barriers Compliance Board Pub/Hardcopy Pages 148

An overview of ADA title II obligations as it affects new construction and alterations in the public right-of-way.

Accessible Sidewalks and Street Crossings

FHWA-SA-03-017 Pub/Hardcopy

A fold-up booklet that lists many areas of concern with creating and maintaining safe and accessible sidewalks and street crossings.

Accident Mitigation Guide for Congested Rural Two-Lane Hwys

2000 NCHRP Pub/Hardcopy Pages 163

This guide will assist planners, designers, and traffic engineers in identifying and designing projects to improve safety on congested rural two-lane highways.

Action Guide Volume III-4 - Roadway Safety

2000 NACE

Pub/Hardcopy Pages 59

A guide to assist county agencies-specifically, road superintendents, engineers, and assistant engineers with highway responsibilities.

Action Guide Volume III-5- Storm water Management & Drainage

2000 NACE

Pub/Hardcopy Pages 152

This guide has been developed to assist local officials in their efforts to develop rational plans for roadway drainage. Providing the county engineer with a format for the investigation of existing drainage patters, analysis of rainfall frequencies and intensities, determination of probable flow requirements, hydraulic design of the necessary channels, conduits and structures, and the legal implications of artificial drainage systems. A chapter on storm water management is also included.

Advanced Rural Transportation Systems

2000 USDOT, ITS Joint Program Office

Pub/CD Format

This CD-Rom is a tool for the Rural ITS community. The basis of the information is that rural challenges and the application of advanced technology must be a "community" investment. It consists of Power Point presentations and seven development tracks. It focuses on user needs, stakeholders, applicable technologies, projects, and resources.

Anti-icing/ RWIS Training

2003 © AASHTO

Pub/CD Format

This self-paced, 2 disc computer-based training program offers lessons on anti-icing and RWIS (Road Weather Information Systems). Practice and review sessions, fun facts, a glossary and a chance to use your new information in a "scenario room" will give you a deeper understanding on the topic.

Application of Geophysical Methods to Highway Related Problems

2004 FHWA-IF-04-021

Pub/Hardcopy Pages 742

This document was designed to provide highway engineers with a basic knowledge of geophysics and nondestructive test methods for solving specific transportation related problems.

Application of Geophysical Methods to Highway Related Problems

2004 USDOT, FHWA-IF-04-021

Pub/Hardcopy Pages 742

This document was designed to provide highway engineers with a basic knowledge of geophysics and nondestructive test methods for solving specific transportation related problems.

Application of Ground Anchors and Soil Nails in Roadway Construction

2007 FHWA, USDOT

Pub/CD Format

This CD set includes five multimedia presentations that describe and explain the principles of science and engineering related to the construction of ground anchors and soil nail wall systems.

ARRA Guideline Specifications

1988 ARRA

Pub/Hardcopy Pages 100

Guideline Specifications, Cold Planing, July, 1986; Cold In-Place Recycling, July, 1986; Hot In-Place Recycling, July, 1986; Hot-Mix Recycling, July, 1986; Guideline Specification in Full Depth Reclamation, March, 1990.

Asphalt - Asphalt Institute Bulletins

AI

Pub/Hardcopy Pages 332

Full series of bulletins of various titles.

Asphalt Emulsion

AEMA

Pub/CD Format

Complete with a video and a thorough manual on the disk, this CD-Rom's primary focus is to impart a basic understanding of asphalt emulsion and to aid in choosing the best emulsion for a project's specific conditions.

Asphalt in Pavement Maintenance

Asphalt Institute (MS-16)

Pub/Hardcopy Pages 80

This manual provides useful and practical information about methods, equipment and terminology that apply to the use of asphalt in the maintenance of all types of pavement structures, including highways and shoulders; streets and parkways; airfield runways, taxiways, and aprons; parking lots and access roads; and driveways and alleys.

Asphalt Pavement Maintenance Field Guide

2002 Minnesota Local Road Research Board

Pub/CD Format

This field guide provides guidelines for techniques for a variety of distresses and conditions. It covers:

- Crack treatments (clean and seal, rout and seal, full-depth crack repair)
 - Surface treatments (fog seal, seal coat, thin hot-mix overlays)
 - Pothole patching and repair (cold-mix asphalt, spray injection patching, hot mix asphalt, slurry or micro-surfacing material)
-

Asphalt Pavement Repair Manuals of Practice

1993 SHRP

Pub/Hardcopy Pages 164

This book is divided into 2 parts:

1. Materials and Procedures for Sealing and Filling Cracks in Asphalt-Surfaced Pavements.
 2. Materials and Procedures for Repair of Potholes in Asphalt-Surfaced Pavements.
-

Asphalt Pavement Thickness Design

1983 © The Asphalt Institute

Pub/Hardcopy Pages 16

Presents a method for the thickness design of asphalt pavements for highways and streets. Contains design information for a range of traffic conditions.

Asphalt Seal Coats

1987 WSDOT WA-RD-136.1

Pub/Hardcopy Pages 35

Describes types of seal coats, gives reasons for selecting each type, and discusses the factors that affect seal coat quality.

Asphalt Surface Treatment Guide

2001 State of Alaska Transportation & Public Facilities

Pub/CD Format

This is a guide that covers considerations and tools needed to build the 3 basic asphalt surface treatments used by Alaska DOT and PF.

Asphalt Surface Treatment Guide

2001 Inkworks, Alaska DOT

Pub/Hardcopy Pages 136

This guide is a field tool to assist workers in selecting and construction for the right asphalt surface treatment for their specific situation.

Assessable Rights-of-Way: A Design Guide

1999 US Architectural and Trans. Barriers Compliance Board

Pub/Hardcopy Pages 148

An overview of ADA title II obligations and best practices

Barrier Guide for Low Volume and Low Speed Roads

2005 CTIP, CFLHD, US DOT, FHWA Pub/Hardcopy Pages 152

This guide is intended to provide assistance in the warranting, selection, and design of roadside barriers.

Basic Asphalt Recycling Manual

2001 FHWA NH101-022/ARRA Pub/Hardcopy Pages 270

The primary focus of the manual is on the in-place and cold recycling of asphalt pavements. This manual was produced to serve as a handy one-stop reference to those starting out in one of the various forms of asphalt recycling. The manual will provide additional useful information to those already involved in asphalt recycling.

Basic Surveying for Highway Workers

1982 ODOT Pub/Hardcopy Pages 166

Could be used for reference or training.

Basics of a Good Road

1996 Cornell CLRP96-5 Pub/Hardcopy Pages 80

This manual offers elements of design, soils, drainage, paving, signs and safety, and organization for the purpose of introducing the new highway superintendent to the "basics".

Best Practices for Road Weather Management

2003 FHWA-OP-03-081 Pub/CD Format

Contains resources to help traffic, emergency, and maintenance managers improve roadway operations under inclement weather conditions. The CD contains 30 case studies of systems utilized in response to various weather threats including fog, high winds, rain, snow, ice, flooding, tornadoes, hurricanes, and avalanches. The CD also includes a listing of over 200 road weather publications, an environmental sensor overview, and online resources.

Best Practices Handbook on Asphalt Pavement Maintenance

2000 Center for Transportation Studies, Minnesota DOT, Pub/Hardcopy Pages 50
Minnesota LRRB

This handbook focuses on preventative maintenance while the roadway is still in good condition with only minimal distress. Tables and specifications included.

Best Practices of Rural and Statewide ITS Strategic Planning

2002 FHWA Pub/Hardcopy Pages 226

The primary objective of this document is to capture and document the best practices of rural and statewide ITS planning and to present an overview of the "typical" ITS planning process. This document addresses more institutional rather than technical issues; its emphasis is on the complex decision-making processes required for the ITS strategic planning. This process includes agency interactions, processes and procedures, organizational structures, and institutional involvement.

Better Military Traffic Engineering

2002 Military Traffic Management Command and The Pub/CD Format
Transportation Engineering Agency

This is a multimedia CD-Rom developed for personnel with responsibilities relating to traffic operations and roadway design. The text, graphics, animations, video, and audio all emphasize general principles of traffic engineering and the practical applications of those principles.

Bicycle Compatibility Index, The: A Level of Service Concept, Implementation Manual
1998 FHWA-RD-987-095 Pub/Hardcopy Pages 53

Focus on the application of the BCI methodology.

Bicycle Safer Journey-Interactive Bicyclist Safety Awareness
FHWA-SA-03-013 Pub/CD Format

This interactive CD-Rom is a virtual journey designed to increase your awareness of bicycle safety. Its use is intended for the general public, road users, safety advocates, and safety professionals. This CD is presented in English and Spanish with closed caption.

Biotechnical Slope Protection and Erosion Control
1982 VNR 18-16149 Pub/Hardcopy Pages 271

Describes the use of plants and structures together to stabilize soils and control erosion.

Bridge Inspection and Rehabilitation: A Practical Guide
1993 John Wiley & Sons Pub/Hardcopy Pages 288

Discusses all bridge design types.

Bridge Inspector's Training Manual /90
1991 FHWA PD-91-015 Pub/Hardcopy Pages 13

A comprehensive manual on programs, procedures, and techniques for inspecting and evaluating a variety of in-service highway bridges.

Bridge Scour and Stream Instability Countermeasures
1997 FHWA HI-97-030 Pub/Hardcopy Pages 121

Guidelines for the selection and design of appropriate countermeasures to mitigate potential damage to bridges and other highway components at stream crossings.

Bridges Constructed From Railroad Cars
1991 Arkansas State University Pub/Hardcopy Pages 13

A study to determine present to future usage of railroad car bridges, development of railroad car data archive, and development of load ratings software for railroad cars.

Calculating Pavement Costs
Asphalt Institute Pub/Hardcopy Pages 23

A revision of the initial publication by the same name issued in 1975 as MISC-75-4.

Caminos Y Calles De Bajo Transito
1992 ASCE Pub/Hardcopy

Chip Seal Best Practices
2005 NCHRP Pub/Hardcopy Pages 111

A report which provides an overview of successful chip seal practices in the U.S., Canada and overseas.

Clay Seam Mapping With Electromagnetic Induction
2005 CFLHD, US DOT, FHWA Pub/Hardcopy Pages 106

This report summarizes multi-phase geophysical demonstrations using various electromagnetic induction methods on SR537 near Dulce, New Mexico.

Common Sense Solutions to Intersection Safety Problems

2005 Michigan LTAP Pub/CD Format

Contains workshop materials which present a basic understanding of intersection safety issues using minimal or uncomplicated technical jargons. Presents a "How to" information for common safety tasks that do not require an engineer, as well as background information on safety tasks that require an engineer.

Community Impact Assessment Subcommittee

2001 TRB, FHWA Pub/CD Format

This CD-Rom is of a workshop held in New Jersey, of which some of the topics discussed were how transportation affects a community's livability and people groups. It also discusses how citizen groups can be involved in the transportation decision making process.

Compaction Handbook

1986 Hyster Pub/Hardcopy Pages 126

Information on embankment, asphalt, and fill materials. Describes material characteristics, compaction techniques, and equipment selection.

Comprehensive Intersection Resource Library Version 1

2000 USDOT, FHWA Pub/CD Format

A compilation of resources and educational materials about traditional signalized and unsignalized intersections, roundabouts, highway/rail crossings, and nontraditional intersections.

Comprehensive Intersection Resource Library Version 3

2000 USDOT, FHWA Pub/CD Format

A compilation of resources and educational materials about traditional signalized and unsignalized intersections, roundabouts, highway/rail crossings, and nontraditional intersections.

Concrete Culverts and Conduits

1975 PCA EB061.02W Pub/Hardcopy Pages 73

Hydraulic Reference Series. A guide that includes design equations, charts, diagrams, and examples.

Concrete Pavement Repair Manuals of Practice

1993 SHRP Pub/Hardcopy Pages 251

This book is divided into 2 parts:

1. Materials and Procedures for the Repair of Joint Seals in Concrete Pavements.
 2. Materials and Procedures for Rapid Repair of Partial-Depth Spalls in Concrete Pavements.
-

Context Sensitive Roadway Surfacing Selectin Guide

2005 USDOT, CTIP, FHWA-CFL/TD-05-004 Pub/Hardcopy Pages 354

This presents available options for roadway surfacing, and provides a decision-making process to allow consideration of all conventional engineering design factors, as well of aesthetics, context compatibility, and environmental impacts. Has accompanying "photo album" CD.

Contract Administration: Technology and Practice in Europe

2002 FHWA Pub/Hardcopy Pages 112

Results of a 2001 study of Portugal, Netherlands, France, and England to investigate and document alternative contract administration procedures for possible implementation in the United States. The report discusses European techniques in terms of procurement, contract types, and payment mechanisms.

Corrosion Protection of Steel Hardware Used in Modern Timber Bridges

1993 FHWA-RD-92-044 Pub/Hardcopy Pages 50

This booklet presents the type of components and fasteners used in timber bridges that may corrode, what types of corrosion that may happen, and how to prevent it.

Crumb Rubber Modifier (CRM) in Asphalt Pavement

1995 Transportation Research Institute, FHWA Pub/Hardcopy Pages 152

This report documents the use of CRM in hot mix asphalt in Arizona, California, and Florida.

Culvert Inspection Manual

1986 FHWA IP-86-2 Pub/Hardcopy Pages 215

A stand alone supplement to the Bridge Inspector's Training Manual.

Culvert Management System

2001 US DOT, LTAP, FHWA -LT-02-001 Pub/CD Format

This is a downloadable program that was developed as an aid in managing culvert inventory, condition assessment and improvement. There is also a user's manual included on the disk.

Design and Construction of the Pochuck Quagmire Bridge - A Suspension Timber Bridge

1998 USDA Pub/Hardcopy Pages 94

This publication captures the partnerships developed, the trials and tribulations, and design and construction of a suspension bridge.

Design of Roundabouts: State-of-the-Art Review

1995 TRL DOT Pub/Hardcopy Pages 270

This review traces the evolution of roundabout design in the UK up to 1993. It also looks at the research and contemporary design practice in other countries. It contains extract from UK roundabout Design Guidelines, but does not claim to be a "designer manual"

Design, Construction, & Quality Control Guidelines for Stress Laminated Timber Bridge Decks

1993 FHWA-RD-91-120 Pub/Hardcopy Pages 58

Design, construction, and inspection guidelines for timber bridge decks.

Designing Sidewalks and Trails for Access

2001 FHWA-RD-01-051 Pub/Hardcopy Pages 8

This publication assists in integrating bicycle and pedestrian projects into the transportation system mainstream, while ensuring the transportation system is inclusive to all users. It is the second phase of the companion report, Designing Sidewalks and Trails, Part I, published August, 1999. These reports collectively provide information on how to implement the requirements of Title II of the Americans with Disabilities Act (ADA) 1990 and Section 504 of the Rehabilitation Act (1993).

Distress Identification Manual for the Long-Term Pavement Project

2003 FHWA-RD-03031 Pub/Hardcopy Pages 164

This manual was developed to provide a consistent, uniform basis for collecting distress data.

Drainage of Asphalt Pavement Structures

1984 Asphalt Institute Pub/Hardcopy Pages 117

This publication is issued to underscore the importance of properly designed drainage. Information in this manual is compiled from many sources, textbooks, publications of government agencies, manufacturers and associations throughout North America, together with the personal experiences of the authors.

Driver Education Work Zone Awareness Program

Illinois DOT Pub/CD Format

A good presentation about the real tragedy of drivers' lack of attention while driving through work zones and what should be done to prevent it.

Driver Understanding of Red Retroreflective Raised Pavement Markers

2006 FHWA-CFL/TD-06/008 Pub/CD Format

Durability of Special Coatings for Corrugated Steel Pipe

2001 FHWA LT-01-002 Pub/Hardcopy Pages 59

This report serves as a practical dust control guide for low volume roads. It includes a historical review of road building techniques and reviews early attempts at binding the surface aggregate with tar or asphalt. It provides a summary of seven surface maintenance techniques and a table of normally accepted maintenance alternatives based on relative severity of the type of distress. It also reviews dust suppressants and non-standard stabilizers.

Dust Abatement Review and Recommendations

1990 USDA Forest Service Pub/Hardcopy Pages 52

Dust Control on Low Volume Roads - A review of techniques and chemicals used

2001 FHWA Pub/Hardcopy Pages 59

Practical dust control guide for low volume roads.

Dust Palliative Selection and Application Guide

1999 USDA Forest Service Pub/Hardcopy Pages 19

This guide helps practitioners understand and correctly choose the dust palliative that is appropriate for their particular site, traffic conditions, and climate. It describes the expected performance, limitations, and potential impacts of various palliatives. Topics include: dust abatement basics; dust palliative basics; suppressant selection tips; suppressant application tips; environmental impacts; references; ongoing studies and literature cited.

Earth Retaining Systems

1997 FHWA SA-96-038 Pub/Hardcopy Pages 161

This document presents information on temporary and permanent earth retaining systems for use on highway projects.

Effective Traffic Calming Applications and Implementation

1998 FHWA Pub/Hardcopy Pages 43

This report will assist engineers with the evaluation, implementation, and application processes as they relate to traffic calming.

Endangered Species Act Build Smart

2005 USDOT, FHWA

Pub/CD Format

This two-CD course provides an interactive explanation of the key elements of the Endangered Species Act as it relates to highway construction activities.

English/Spanish Highway Technical Reference Terms & Definitions

1991 FHWA

Pub/Hardcopy Pages 79

Definitions in Spanish and English for over 260 terms.

Environmentally Sensitive Maintenance for Dirt and Gravel Roads

2006 Penn DOT

Pub/Hardcopy Pages 350

This manual will provide insight into using natural systems and innovative technologies to reduce erosion, sediment and dust pollution while more effectively and efficiently maintaining dirt and gravel roads.

Equipment Management Manual

1997 APWA

Pub/Hardcopy Pages 297

Replacement Analysis, Spec Writing-Hardware, Preventive Maintenance, Parts Inventory Control, APWA Data Bank Standard, Equipment Management Information Systems, Administration, Planning (Equipment, Facilities, Manpower) and Operations are all topics addressed in this manual.

Erosion Control Handbook for Local Roads

2003 FHWA, Minnesota LRRB

Pub/Hardcopy Pages 118

The manual will assist counties, townships and local units of government by providing guidelines and methods of effective erosion control practices on low volume roads. Effective erosion control requires an integrated approach, which considers government statutes and regulations, a broad knowledge of temporary and permanent erosion control methods; design, construction, and maintenance considerations; and new technology. All of those elements are included in this manual. In accompaniment to the booklet, the Instructor's Guide and Instructional Materials and Manual Production Files are available on CDs upon request.

Erosion Control Handbook for Local Roads

2003 FHWA, TRB

Pub/CD Format

This CD contains the production files for the Erosion Control Handbook and other materials required for the course entitled "Design and Maintenance Consideration for Erosion Control on Low Volume Roads".

Erosion Control Plans Technical Guidance Handbook

1991 City of Portland Bureau of Environmental Services

Pub/Hardcopy Pages 26

A handbook introducing plan submittal requirements and recommended measures for construction site erosion control.

Evaluation of the Green Terramesh Reinforced Slope System

2005 CERF

Pub/Hardcopy

This is an evaluation designed to determine the basic capabilities and limitations of Green Terramesh for use as a technically viable reinforced slope retaining system, using multiple graphs, picktures and reports.

Evaluation of the Retained Earth MSE Wall System

2005 CERF Pub/Hardcopy Pages 250

Using multiple reports, graphs, pictures and graphics, this book provides an evaluation of the basic capabilities and limitations of Retained Earth for use as a technically viable precast MSE retaining wall system.

Evaluation of the Versa-Lok/Miragrid Reinforced Soil Wall System

2005 CERF Pub/Hardcopy Pages 150

This collection of reports, graphs, diagrams and pictures looks at the design of this system of mechanically stabilized earth structures and gives an evaluation of its basic capabilities and limitations.

Executive Summary of: Regional Think Tanks

2000 APWA Pub/Hardcopy Pages 44

This publication is about rural and small community professional capacity building programs.

FHWA's High Performance Concrete Tool Kit

1997 FHWA Pub/Hardcopy Pages 166

Contains several reports of bridges built with high-performance concrete, information on the product, and reports.

Field Manual Erosion & Sediment Control

2002 ODOT Geo/Hydro Unit, Harza Engineering Pub/Hardcopy Pages 96

Tools for the prevention of erosion and the containment of sediment. Check lists and graphs included.

Field Performance of Timber Bridges

2002 FHWA FPL-RP-588 Pub/Hardcopy Pages vary

This is a series of publications focusing on the performance of timber bridges, thus providing a basis for validating or revising design criteria and further improving efficiency and economy in bridge design, fabrication, and construction. The series are listed as: 11. Spearfish Creek Stress-Laminated Box-Beam Bridge; 13. Mohawk Canal Stress-Laminated Bridge; 14. Dean, Hibbsville, and Decatur Stress-Laminated Deck Bridges; 16. North Siwell Road Stress-Laminated Bridge; 17. Ciphers Stress-Laminated Deck Bridge; 18. Byron Stress-Laminated Truss Bridge.

Fish Passage Through Culverts

1990 FHWA, FL-90-006 Pub/Hardcopy Pages 67

A synthesis of many references on fish passage through road drainage structures.

Fluid Power in Plant and Field

1985 Womack Educ. Pub/Hardcopy Pages 232

A guide for technicians and servicemen, who install, operate, maintain, and troubleshoot hydraulic and air fluid power systems.

Forest Service Specifications for Construction of Roads and Bridges

1996 USDA Forest Service Pub/Hardcopy Pages 614

Standard specifications that commonly apply in Public Works and Timber Sale Contracts.

Full Road Closure for Work Zone Operations: A Cross-Cutting Study

2003 FHWA-OP-04-009 Pub/Hardcopy Pages 40

Reducing congestion and crashes through full road closure for maintenance and construction.

Geosynthetics: Use in Streets and Highways

1999 Minnesota Local Road Research Board, Minnesota Pub/CD Format
DOT

This CD-Rom concentrates specifically on geosynthetics' use in streets and highways in three areas: separation, reinforcement, and drainage applications below the pavement.

Geotextile Selection and Installation Manual for Rural Unpaved Roads

1989 FHWA RT-89-050 Pub/Hardcopy Pages 64

An illustrated "how to" guide.

GIS and Infrastructure Management for Public Works and Utilities

1997 © APWA Pub/Hardcopy Pages 63

Adapted from two full day workshops: AM/FM/GIS for Public Works- A Manager's Perspective and Introduction to GIS for Water and Wastewater Utilities.

Good Practices: Incorporating Safety into Resurfacing and Restoration Projects

200 FHWA-SA-07-001 Pub/CD Format

Gravel Roads - Maintenance and Design Manual

2000 South Dakota LTAP Pub/Hardcopy Pages 88

This manual is designed to answer questions such as: What is enough surface crown? What is too much? and, What causes corrugation?

Gravel Roads Maintenance and Design Manual

2000 FHWA and South Dakota LTAP Pub/CD Format

There are over 1.6 million miles of unpaved roads in the U.S. This manual was developed with a major emphasis on the maintenance of gravel roads, including some basic designs. The information is clear and straightforward, with detailed guidelines and instructions.

Ground Anchors and Anchored Systems

1999 FHWA-IF-99-015 Pub/Hardcopy Pages 281

State-of-the-practice information on the design and installation of cement-grouted ground anchors and anchored systems for highway application.

Guide for Minimizing the Effect of Preservative-Treated Wood on Sensitive Environments

2001 USDA, FHWA Pub/Hardcopy Pages 18

Preservative treated wood is often used for construction of highway and footbridges, wetland boardwalks, and other structures in or over water or sensitive environments. In these applications, it is important that release of preservative from the wood into the environment is minimized. This publication addresses this concern by describing the various types of environmental impacts of pressure treated wood, and discusses methods of minimizing potential environmental impacts. Methods include fabricating members before treatment; specifying that the wood be treated using methods that ensure chemical fixation and prevent the formation of surface residues or bleeding; storing wood under cover; and containment and collection of construction residue.

Guide Specifications for Bridge Railings

1989 AASTO Pub/Hardcopy Pages 49

Provides alternative to the design procedures contained in the 14th Edition of the AASHTO Standard Specifications for Highway Bridges.

Guide to Developing Performance-Related Specifications for PCC Pavements

USDOT, FHWA

Pub/CD Format

This CD contains a four-volume report presenting guidelines and recommendations to assist State and local highway/transportation agencies in developing and using performance-related specifications for Portland cement concrete pavement constructions.

Guide To Earthwork Construction

1990 TRB/FHWA HI-90-048

Pub/Hardcopy Pages 107

This guide addresses all aspects of construction.

Guidelines and Recommendations: To Accommodate Older Drivers and Pedestrians

2001 FHWA-RD-01-051

Pub/Hardcopy Pages 86

This project updated, revised, and expanded the scope of the "Older Driver Highway Design Handbook" published by FHWA in 1998.

Guidelines For Converting Stop to Yield Control at Intersections

1989 TRB – NCHRP, RPT 320

Pub/Hardcopy Pages 49

Written as a result of traffic studies.

Guidelines for Geometric Design of Very Low-Volume Local Roads

2001 AASHTO

Pub/Hardcopy Pages 72

This report addresses the unique needs of low-volume local roads and geometric designs to meet those needs.

Guidelines For Slope Maintenance and Slide Restoration

1986 FHWA TS-85-231

Pub/Hardcopy Pages 65

Chapters include: slide identification and definition of terms, investigation and inspection of critical slopes and drainage, maintenance activities, and repair and restoration techniques. The booklet is intended for first level maintenance supervisors.

Guidelines for the Design and Application of Speed Humps

1979 ITE ISBN 0-95403-10-8

Pub/Hardcopy Pages 39

This includes ITE recommended practice on the topic, with an extensive reference list.

Guidelines for the Selection of W-Beam Barrier Terminals

2006 FHWA-SA-06-19

Pub/CD Format

This CD provides information for selecting and properly installing the most appropriate terminal design at any site. Also provides guidance on proper site grading, and examples of appropriate and inappropriate installations.

Guidelines for Using Prime and Tack Coats

2005 USDOT, Federal Lands Hwy, FHWA-CFL/TD-05-002

Pub/Hardcopy Pages 110

This guideline provides decision-making guidance on how to use, when to keep, and when to eliminate prime and tack coats.

High Performance Concrete Net Conference

2003

Pub/CD Format

This was a 5 hour net conference held between members of FHWA and several DOT centers. What are included on the CD-ROM are the notes that were discussed regarding high performance concrete.

High-Performance Concrete Structural Designer's Guide

2005 USDOT, FHWA

Pub/CD Format

Highway Design Handbook for Older Drivers and Pedestrians

2001 FHWA-RD-01-103

Pub/Hardcopy Pages 380

This project updated, revised, and expanded the scope of the "Older Driver Highway Design Handbook" published by FHWA in 1998. The resulting report incorporates new research findings and technical developments. This is a practical information source that should be of interest to highway designers, traffic engineers and highway safety specialists.

Highway Safety Design and Operations Guide

1997 AASHTO ISBN 1-56

Pub/Hardcopy Pages 118

This guide presents concepts for enhancing safety in the operation and management of highways.

Highway/Utility Guide

1993 FHWA SA-93-049

Pub/Hardcopy Pages 298

This guide addresses issues that arise from the sharing of right-of-ways.

HMA Materials, Characteristics and Control Course No. 13145

1999 FHWA, NHI

Pub/CD Format

Since the beginning of the Strategic Highway Research Program (SHRP), there has been a conscious effort within the Federal Highway Administration (FHWA) and local state agencies to improve the material and construction quality of asphalt concrete pavements. Presented via worksheets, an instructor's manual, a reference manual, and a Power Point Presentation, the intent of this course is to improve the quality of HMA mixtures.

Hot Mix Asphalt Materials, Mixture Design, and Construction

1991 NAPA

Pub/Hardcopy Pages 490

Written as a college text. Resource for AC information.

Hot Mix Asphalt Pavement Evaluation and Rehabilitation Course No. 131063

2001 FHWA, NHI

Pub/CD Format

This course is intended to assist pavement engineers in identifying and developing the most reliable and cost-effective rehabilitation solution for a given HMA pavement project. This course addresses the issue of rehabilitation in a logical sequence, including an existing pavement condition evaluation, a needs assessment, a determination of feasible rehabilitation alternatives, and the selection of the preferred treatment. Course includes an instructor's guide, a workbook, a reference manual and a Power Point Presentation.

Hot-Mix Asphalt Fundamentals

Compaction America

Pub/Hardcopy Pages 50

A great little guidebook that explains the basics of hot-mix asphalt.

Hot-Mix Asphalt Paving Handbook 2000

2000 US Army Corp

Pub/Hardcopy Pages 219

This handbook covers the state of the art of asphalt paving, including plant operations, transportation of materials, surface preparation, laydown, compaction, and quality control processes. It is aimed at the field personnel who are responsible for these operations – both contractor personnel who do the work and agency personnel who oversee and inspect the work.

How to Develop and Use Equipment Performance Specifications

1991 TRB Circular 381 Pub/Hardcopy Pages 25

Proposes a five-step process for successful specification writing. Specifications for backhoe loader and motor grader are given as examples.

Hydraulic Analysis For Low-Volume Road

1991 FHWA-PA-91-005-55-038 Pub/Hardcopy Pages 126

This report includes training material for designing culverts, bridges, low water crossings, guidance for signing, and marking for flooding (includes computer programs).

Hydraulic Design of Highway Culverts

1985 FHWA-IP-85-15 Pub/Hardcopy Pages 252

This combines culvert design information previously contained in Hydraulic Engineering Circular (HEC) No. 5, No. 10, and No. 13, with hydrologic, storage routing, and special culvert design information.

Hydraulic Design Series No.2: Highway Hydrology

1996 FHWA-SA-96-067 Pub/Hardcopy Pages 357

The physical processes of the hydrologic cycle that are important to highway engineers and the methods that are used in the design of highway drainage structures are contained in this report.

Hydraulics Manual Vol. 2- Erosion and Sediment Control

1999 ODOT, HARZA Engineering Co. Pub/Hardcopy Pages 215

The purpose of this manual is to present the ODOT program to prevent pollution of water caused by erosion from construction sites.

Implementing an Executive Management Improvement Program

1990 SUP Pub/Hardcopy Pages 57

A guide to help managers and administrators strengthen executive management, and develop a well-organized program to improve management, productivity, and quality of services.

Improving Highway Safety at Bridges on Local Roads and Streets

1998 FHWA-SA-98-083 Pub/Hardcopy Pages 35

This pamphlet is intended as a general guide to effective, low-cost methods of improving and enhancing bridge, and bridge approach, safety.

Improving Operational Safety on Local Roads and Streets

1988 FHWA 241-663/80018 Pub/Hardcopy Pages 46

This pamphlet is intended as a general guide to effective, low-cost methods of improving and enhancing operational highway safety.

Improving Safety, Reliability, and Security

2002 FHWA Pub/CD Format

Contains electronic presentations on congestion; achieving security by actively managing and operating the transportation system; integrating public safety and transportation operations; minimizing weather's impacts on transportation operations; and a national dialogue on transportation management and operations.

Information on Modern Timber Bridges in the U.S. 1988-2001

Mira Digital Publishing, Inc., USFS, US DOT Pub/CD Format

The content of this CD was written and prepared by U.S. Government employees. It contains information about modern timber bridges in the United States from 1988 to 2001.

Innovative Approaches to Transportation- A Guidebook

2001 USDOT, FHWA, USDA Pub/Hardcopy Pages 74

This guidebook was designed to assist in transportation planning for the Transportation Equity Act.

Innovative Intersection Safety Improvement Strategies and Management Practices

2006 FHWA-SA-06-016 Pub/Hardcopy Pages 104

This report provides a discussion on the successes and challenges to enhancing safety for highway users at intersections.

InSAR Applications for Highway Transportation Projects

2006 CTIP, USDOT, FHWA-CFL/TD-06-002 Pub/Hardcopy Pages 100

FHWA has initiated the project described within this report to evaluate the utility of InSAR technology to monitor slide movements that impact road networks.

Inspection of Fracture Critical Bridge Members

1986 FHWA Pub/Hardcopy Pages 232

Guidelines for the identification, inspection, and evaluation of fracture critical bridge members.

Inspection of Ground Anchors 2 CD Set

2003 CTIP, FHWA, WFL-HD, Portland State University, Portland, OR Pub/CD Format

The purpose of these 2 CDs is to provide field inspectors with background knowledge of the construction of ground anchors, with instructions for inspecting ground anchors during construction. Useful for both experienced and inexperienced inspectors. It is suggested that Introduction to Inspection of Ground Anchors and Soil Nails be viewed first. CD 1- 23 min
CD 2- 24 min

Intelligent Transportation Systems- Benefits, Costs and Lessons Learned

2005 Mitretek Systems, USDOT Pub/Hardcopy Pages 192

This report presents material from a number of databases, which describes the impacts and costs of the intelligent transportation infrastructure as well as intelligent vehicle applications.

Interactive Highway Safety Design Model: Safer Roads through Better Design

2003 FHWA-SA-03-005 Pub/CD Format

Road safety evaluation software that marshals available knowledge about safety into a more useful form for highway planners and designers. Interactive Highway Safety Design Model (IHSDM) is a suite of software analysis tools for explicit, quantitative evaluation of safety and operational effects of geometric design on two-lane rural highways. IHSDM results support decision making throughout the highway design process. Prospective users include highway designers, planners and project managers, and safety and traffic engineering reviewers in State and local highway agencies and engineering consulting firms.

Intergovernmental Partnering Guidebook

ODOT Pub/Hardcopy Pages 93

This guidebook is intended to help you expedite the organization of partnerships by presenting the processes and examples of an agreement between state and local government.

Intro to Geosynthetics in Transportation

2007 GMA Pub/CD Format

For local technical assistance programs and anyone interested in geosynthetics.

Introduction to Highway Hydraulics

1997 FHWA-HI 97-028 Pub/Hardcopy Pages 192

Hydraulic Design Series Number 4 (HDS 4), provides an introduction to highway hydraulics and to hydrologic techniques applicable to small areas.

Introduction to the Inspection of Ground Anchors and Soil Nails

2003 CTIP, FHWA, WFL-HD, Portland State University, Pub/CD Format
Portland, OR

The purpose of this CD is to help introduce WFL-HD inspectors to ground anchor and soil nail technologies.

ITS Greatest Hits

FHWA-OP-99-028 Pub/CD Format

The U.S. Dot's Intelligent Transportation Systems Joint Program Office compiled a collection of ITS-related documents frequently requested from the ITS web site.

Judicial Enforcement of Variable Speed Limits

2002 NCHRP Legal Research Digest Pub/Hardcopy Pages 25

Local Low Volume Roads and Streets

1992 ASCE Pub/Hardcopy Pages 166

Basic information concerning local low volume roads and streets.

Low-Cost Treatments for Horizontal Curve Safety

2006 USDOT, FHWA-SA-07-002 Pub/Hardcopy Pages 60

This publication was prepared to provide practical information on low-cost treatments that can be applied at horizontal curves to address identified or potential safety problems.

Main Street...When A Highway Runs Through It: A Handbook for Oregon Communities

1999 ODOT, TGM, DLCD Pub/Hardcopy Pages 102

This handbook was designed for communities that are working together to enhance the vitality of their main street.

Maintenance of Aggregate and Earth Roads

1987 AASHTO BM-2 Pub/Hardcopy Pages 196

Guidance on identifying problem areas and applying solutions.

Maintenance of Signs and Sign Supports for Local Roads and Streets Presentation

2002 Pennsylvania LTAP Program Pub/CD Format

Designed to accompany Maintenance of Signs and Sign Supports for Local Roads and Streets: A Guide for Street and Highway Maintenance Personnel. Contains a nonlinear PowerPoint® presentation for trainers to use when presenting information about sign maintenance at workshops or conferences. Contains the necessary presentation files, an Instructor's Manual, and a brief description of how the presentation works.

Maintenance of Small Traffic Signs

1991 FHWA-RT-90-002 Pub/Hardcopy Pages 38

This handbook is intended to help maintenance workers do a good job of maintaining small traffic signs, since these signs are important for traffic safety.

Maintenance Practices for Local Roads, Volume I- Maintenance Techniques

1994 Pennsylvania DOT Pub/Hardcopy Pages 270

This is one of four manuals designed to aid municipalities in Pennsylvania to administer, manage, and conduct road maintenance activities

Maintenance Practices for Local Roads, Volume III- Program Administration

1994 Pennsylvania DOT Pub/Hardcopy Pages 178

This is one of four manuals designed to aid municipalities in Pennsylvania to administer, manage, and conduct road maintenance activities.

Maintenance Practices for Local Roads, Volume IV- An Overview for Elected Officials

1994 Pennsylvania DOT Pub/Hardcopy Pages 156

This is one of four manuals designed to aid municipalities in Pennsylvania to administer, manage, and conduct road maintenance activities.

Making Work Zones Work Better Workshop

2003 FHWA Pub/CD Format

This CD-ROM includes several Word documents and Power Point presentations on a large number of topics, such as traffic control and enforcement practices; short term work zones; planning and designs that are best for worker safety; considerations on how contractors can affect driver impact; how to separate workers from traffic; on site examples, such as the Eastbound McClugage Bridge, in Peoria, Illinois; and many more topics. There are multiple email addresses and web links included, in order to contact the authors and organizations directly.

Managing Pavement Edge Drop-offs to Improve Safety and Reduce Tort Liability

2004 USDOT, FHWA Pub/CD Format

This multimedia CD-ROM presents a full day workshop on the topic, complete with documentation and a follow-up session.

Manual for Abandoned Underground Mine Inventory and Risk Assessment

1999 Ohio DOT Pub/Hardcopy Pages 166

This manual explains a process to manage roadway sites beneath which abandoned underground mines exist.

Manual for Bridge Maintenance Planning and Repair Methods

Florida DOT Pub/Hardcopy Pages 65

Volume I: Repair Methods, Volume II: Bridge Maintenance Planning

Marine Wood Maintenance Manual

1984 Oregon State University Pub/Hardcopy Pages 62

This is a guide for proper use of Douglas-fir in marine exposures.

Massachusetts Bridge Technology Workshop

2002 Boston MA- FHWA Pub/CD Format

This is a Power Point presentation of several speakers covering the following subjects:

March 26- High Performance Steel

March 27- Corrosion Resistant Reinforcing Bars

March 28- Introduction to Nondestructive Evaluation

Materials and Procedures for Repair of Joint Seals in Portland Cement Concrete Pavements

2001 FHWA Pub/Hardcopy Pages 127

This information pertains to the performance of sealants and resealing methods, the availability and relative cost of sealant materials, and the proper ways of planning, designing, constructing, and monitoring the performance of joint resealing projects.

Materials and Procedures for Repair of Potholes in Asphalt-Surfaced Pavements

2001 FHWA Pub/Hardcopy Pages 85

This is the latest information pertaining to the types and performance characteristics of repair materials and methods, plus the proper ways of planning, designing, constructing, and monitoring the performance of pothole repair projects.

Metric in Minutes

1994 Dennis R. Brownridge Pub/Hardcopy Pages 100

A Comprehensive Resource for Learning and Teaching the Metric System (SI)

Micro-surfacing- Quality Assurance and Use Guidelines

International Slurry Surfacing Association Pub/Hardcopy Pages 50

This report is structured into 2 sections- use and quality assurance- and can be a guide for anyone involved in micro-surfacing.

Minnesota Seal Coat Handbook

1998 Minnesota DOT Pub/Hardcopy Pages 112

This manual provides a solid background in seal coat materials, equipment, design and construction for the field inspector.

Minnesota Snow and Ice Control

2005 Minnesota DOT Pub/CD Format

Describes the tools, best practices and limitations for snow and ice control. Explains when to use and when not to use these tools and practices. Encourages progressive changes in snow and ice control practices that will help agencies reduce salt and sand use - and related environmental damage - while still meeting the safety and mobility needs of roadway users.

Moving Safely Across America

FHWA Pub/CD Format

This CD-Rom is an "Interactive Highway Safety Experience", which was developed to improve the level of highway safety knowledge for the average driver. It could be incorporated into state safety awareness initiatives, driver education programs, or used in conjunction with other public safety information campaigns.

Multnomah County Fish Passage Presentation

2000 Pub/CD Format

This Power Point presentation addresses the problems found with some culverts for fish passage and offers several solutions.

National Conference on Wood Transportation Structures

1996 USDA-Forest Service, FHWA Pub/Hardcopy Pages 494

State-of-the-art information on wood utilization in transportation applications.

Oregon Traffic Patrol Manual for Schools

1992 Dept of Education Pub/Hardcopy Pages 20

This manual describes the role of the traffic patrol and the guidelines for its operation.

Our Nation's Highways

FHWA Pub/Hardcopy Pages 50

A condensed overview of facts and figures about our Nation's highways.

Pavement Maintenance Effectiveness, Preventive Maintenance Treatments

1996 FHWA SA-96-027 Pub/Hardcopy Pages 145

Pavement Management Catalog

2002 FHWA Pub/Hardcopy Pages 109

This publication is a new edition of the Pavement Management Software Catalog, which was last issued in January 1997. This edition has been expanded to include a wider range of software packages of interest to both States and local jurisdictions. Also included is a new section on state-of-the-art data collection equipment of support pavement management systems.

The development of pavement management software and data collection equipment is maturing rapidly to meet the expanding needs of State and local governments in managing their highway systems. This catalog is intended as a source book of information to assist officials in selecting systems to meet the needs of their communities.

Pavement Notebook for FHWA Engineers

1996 FHWA-PD-96-037 Pub/Hardcopy Pages 860

Reference material for pavement.

Pavement Preservation- State of the Practice

2000 Minnesota DOT, USDOT, FHWA, Ohio DOT, Pub/CD Format
Foundation for Pavement Preservation

This CD presents guidelines and technical information for pavement preservation. It includes decision-making criteria and technical specifications, as well as information on the costs, benefits, and effectiveness.

Pavement Preservation Technology in Franc, S. Africa, & Australia

2002 FHWA-PL-03-001 Pub/Hardcopy Pages 46

Low-cost, long-lasting pavement practices in these 3 countries are studied.

Pavement Preservation Toolbox

2005 USDOT, FHWA Pub/CD Format

This very informative CD presents a broad range of preservation strategies and preventive maintenance techniques. Three major asphalt companies also contributed their input on this subject.

Pavement Preservation: Selecting Pavements for Preventive Maintenance Course No. 131058

2001 NHTA, NHTI

Pub/CD Format

This training course is the second in a series of courses that focus on developing, teaching, and implementing preventive maintenance concepts on select pavements. It targets an audience of maintenance engineers, planners, and field personnel through the use of an instructor guide, a workbook, and visual aids. In addition, the participants are introduced to the different tools that are currently available for selecting the “best” preventive maintenance treatment for a given pavement.

Pavement Recycling Guidelines for State and Local Governments

1998

Pub/CD Format

This disk was developed to be a 2-day workshop that includes all aspects of recycling of asphalt pavements, with each chapter corresponding to a session in the workshop. This disk provides a very in-depth coverage of this topic.

Pedestrian/Bicycle Safety Resource Set

FHWA-SA-00-005

Pub/CD Format

Collisions between pedestrians and motor vehicles are a serious problem in the United States. This electronic resource contains information on pedestrian/bicycle safety guidelines, crash types, countermeasures, outreach tools, technology and much more. The purpose of this resource is to heighten your awareness and provide some helpful information on how to make your communities safer for pedestrians and bicyclists.

Plans for Crash-Tested Wood Bridge Railings for Concrete Decks

1998

Forest Products Laboratory

Pub/Hardcopy

Pages 17

These railings meet testing and evaluation criteria outlined in NCHRP Report 350: a glued-laminated timber rail, with and without a curb, at Test Level 2; a glulam rail with curb at TL-4; and a glulam curb rail for low-volume roads at TL-1. Full drawing sets are provided in customary U.S. and SI units.

Preventing Discrimination in the Federal-Aid Program

1997

ODOT, FHWA

Pub/Hardcopy

A systematic, interdisciplinary approach.

Problems Associated with Gravel Roads

1998

FHWA SA-98-045

Pub/Hardcopy

Pages 158

This handbook looks at the overall environment of gravel roads: the materials used to surface them; the common surface defects – their causes, prevention, and the correction; equipment and techniques used to repair and maintain gravel roads.

Promoting Geosynthetics Use on Federal Lands Highway Projects

2006

CFLHD, US DOT, FHWA

Pub/Hardcopy

Pages 116

This study aims to develop recommendations to identify, promote and advance the use of geosynthetic materials.

Quality Assurance and Inspection Manual for Timber Bridges

1992

Pennsylvania DOT

Pub/Hardcopy

Pages 200

A quality control and inspection manual for hardwood stress-laminated and glulam timber bridges.

RC Flagman Evaluation

1999

Ohio DOT

Pub/CD Format

RCAD Implementation Guide

2005 USDOT, FHWA

Pub/CD Format

Recommended Performance Guidelines

AEMA

Pub/Hardcopy

Pages 123

Responsibilities of the International Technical Committee.

Recommended Use of Reclaimed Asphalt Pavement in the Superpave Mix Design Method

2004 Transportation Research Board CRP-CD-44

Pub/CD Format

This consists of research developed guidelines for incorporating reclaimed asphalt pavement (RAP) in the Superpave system and a manual that can be used by laboratory and field technicians.

Recycling Hot-Mix Asphalt Pavements

2007 © NAPA

Pub/Hardcopy

Pages 27

This publication provides new and updated information about the equipment and methods of hot-mix asphalt facilities throughout the country.

Red Light Green Light

US DOT, FHWA

Pub/CD Format

A well done presentation about traffic safety at intersections. Consistency of signs and signals, drivers being attentive, and the role we all play in avoiding crashes is discussed.

Reinforced Slope Stability

1997 WA SA96-039

Pub/Hardcopy

Pages 92

This manual is the user's guide for the microcomputer program RSS (Reinforced Slope Stability). The program analyzes and designs soil slopes strengthened with horizontal reinforcement, as well as analyzing those areas not reinforced.

Research Accomplishments for Wood Transportation Structures

1998 FHWA

Pub/Hardcopy

Pages 30

This publication provides a summary of the research accomplishments of the joint FPL-FHWA research program for wood transportation structures.

Restoration of Aquatic-Species Passage Using Stream Simulation

2002 USDS-Forest Service

Pub/Hardcopy

Pages 194

This is a summary report based on information contained from the original report conducted by ODFW, between mid 1996-1999, on the assessments of fish passage conditions at State-and county-owned road culverts.

Restoring Credibility to Speed Setting: Engineering, Enforcement, & Educational Issues

2000 NHTSA

Pub/Hardcopy

Pages 7

This report is based on the findings of two FY 2000 workshops sponsored by the USDOT Speed management team. It provides a "planning guide" for others who want to sponsor multi-disciplinary speed management workshops under development.

Results from a Safety Survey: Workforce Development for Transportation Professionals

2002 USDOT, FHWA

Pub/Hardcopy

Pages 36

Goals of this survey were to assess what topics the transportation safety community would like to have and to evaluate how they would like to access training courses.

Retention, Detention, and Overland Flow for Pollutant Removal from Hwy Stormwater Runoff

1996 FHWA RD-96-096 Pub/Hardcopy

This is a two-volume report. The research developed design guidelines and specifications for measures to reduce or eliminate the impacts of highway runoff on surface waters.

Road Engineering and Construction Practices for Cold Regions

2007 FHWA, USDOT Pub/CD Format

This CD set contains multimedia presentations that will explain the principles of science and engineering related to road engineering and construction for cold regions.. Would be great in a training session, or to further your own understanding of the topic.

Road Safety Fundamentals

2005 FHWA SA-05-011 Pub/Hardcopy Pages 21

This field guide relates a few key concepts to be aware of when evaluating road and traffic devices. Has a companion handbook.

Road Safety Fundamentals Handbook

2005 FHWA SA-05-011 Pub/Hardcopy Pages 108

This handbook identifies the core concepts local and tribal road agencies can use to evaluate and improve their safety operations. A companion field guide is available.

Roadside Design Guide 2002

2002 AASHTO Pub/Hardcopy Pages 313

Synthesis of information and operating practices related to roadside safety. Intended for use as a resource document from which individual highway agencies can develop standards and policies.

Roadside Safety Analysis Program (RSAP)

2003 AASHTO Pub/CD Format

Roadside Weed Management

FHWA, US DOT Pub/Hardcopy Pages 368

This book contains lists of noxious weeds for each state, along with contacts to get more information.

Roadway Aesthetic Treatments

2001 FHWA Pub/CD Format

A photo album and workbook including innovative aesthetic treatment examples from around the U.S. The CD also includes color photos and brief descriptions, along with typical details and construction costs.

Roadway and Roadside Drainage

2001 Cornell Local Roads Program Pub/Hardcopy Pages 88

This provides basic drainage information to people who fix roads in New York.

Roadway Delineation Practices Handbook

1994 FHWA SA-93-001 Pub/Hardcopy Pages 12

Supplements the MUTCD by offering implementation guidelines.

Roadway Safety Guide

2001 RSF FHWA

Pub/Hardcopy Pages 77

This guide is designed to provide local elected officials and other community leaders with basic information to improve roadway safety in their communities. Written for non-engineers, it is designed to be a hands-on, user-friendly document.

Roadway Safety Tools for Local Agencies

2004 TRB NCHRP 0-309-06968-8

Pub/Hardcopy Pages 168

Aids local government agencies as they select tools and develop programs to implement road and street safety improvements. Recognizes the wide variation in the operations and responsibilities of local agencies and acknowledges that the level of expertise in transportation safety analysis also varies greatly. Examines the tools and procedures that are practical, relatively easy to apply and can be implemented by agencies with limited financial support and personnel. Grouping safety tools as either reactive or proactive, and basic and advanced analysis approaches were considered for each group.

Rock and Mineral Identification for Engineers

1991 Source FHWA HI-91-025

Pub/Hardcopy Pages 50

This guide can help engineers to make basic distinctions among various natural rock and mineral types. The guide can also help engineers better understand why certain types of rocks and minerals have desirable or undesirable characteristics as potential aggregates.

Rockfall Catchment Area Design Guide (RCAD)

ODOT SPR-3 (032)

Pub/CD Format

Rockfall catchments “catch” rocks that come down slopes next to roads, thereby stopping them before they reach the road; that’s if they’re constructed correctly. This CD is a series of reports of tests done by several DOT centers and the results they got, as well as designs for testing current catchments and building safer catchments in the future.

Roundabout Design Guidelines

1994 FHWA

Pub/Hardcopy Pages 64

This guide was developed to set forth a standard approach to the planning, design, and construction of roundabouts in the State of Maryland.

Roundabouts: An Informational Guide

2000 FHWA

Pub/Hardcopy Pages 284

This guide provides information and guidance on roundabouts, resulting in designs that are suitable for a variety of typical conditions in the U.S. The scope of the guide is to provide general information, planning techniques, evaluation procedures, and design guidelines.

Routine Maintenance of Concrete Bridges

1994 ACI 345.1R-83

Pub/Hardcopy Pages 250

Illustrative guide to common problems.

Routine Road Maintenance

2004 ODOT

Pub/Hardcopy Pages 60

Water quality and habitat guide best management practices

Rural Applications of Advanced Traveler Information Systems

1997 FHWA-RD-97-034

Pub/Hardcopy Pages 111

Rural ITS Toolbox

2001 FHWA-OP-01-030 Pub/Hardcopy Pages 132

The document is intended to support agencies and groups that are beginning the process of rural or statewide ITS deployment by making the body of experience associated with various ITS application deployments accessible to potential new users. In recent years, it has become increasingly common for states and regions to consider ITS solutions for their communities. This document identifies successful rural ITS projects and statewide applications from across the nation. ITS applications (referred to as tools in the document) listed include those in the process of being tested prior to full deployment.

Rural Transportation Planning Handbook

2001 FHWA Pub/Hardcopy Pages 96

This material provides a resource to rural planners, city and county engineers, stakeholders, local officials, and other decision-makers involved with developing rural transportation plans.

Safe Routes to School Program

3M Traffic Safety Solutions Pub/CD Format

Ideas, recommendations, information and links to help you easily prepare fund-generating proposals for safer routes to local schools.

Safer Journey-Interactive Pedestrian Safety Awareness

2002 FHWA-SA-00-009 Pub/CD Format

Collisions between pedestrians and motor vehicles are a serious problem in the United States and around the globe. Annually, pedestrians account for almost 14% of all motor vehicle deaths nationwide. With this in mind, this CD-Rom was developed to improve the level of pedestrian knowledge for all road users and safety practitioners. This CD is available in both English and Spanish.

Safer Journey-Interactive Pedestrian Safety Awareness (in English and Spanish)

2002 FHWA-SA-03-014 Pub/CD Format

Collisions between pedestrians and motor vehicles are a serious problem in the United States and around the globe. Annually, pedestrians account for almost 14% of all motor vehicle deaths nationwide. With this in mind, this CD-Rom was developed to improve the level of pedestrian knowledge for all road users and safety practitioners. This CD is available in both English and Spanish.

Safety & Operations

USDOT, FHWA Pub/CD Format

ABSTRACT: Compilation of information products, publications and research reports on Advanced Traveler Information Systems (ATIS), driver and human performance, driver information systems, intelligent vehicle/in-vehicle, ITS capabilities, older drivers, pedestrian/bicyclist safety, roadway and roadside safety, safety management, traffic management systems and work zones. Includes FHWA publication, Improving Highway Safety at Bridges on Local Roads and Streets.

Safety Effects of Marked vs. Unmarked Crosswalks at Uncontrolled Locations: Executive Sum

2002 FHWA-RD-01-075 Pub/Hardcopy Pages 33

This report looks at pedestrian needs in crossing streets. Substantial improvements were recommended to provide for safer pedestrian crossing on certain roads, such as adding traffic signals with pedestrian signals when warranted, providing raised medians, speed-reducing measures, and others.

Safety Improvements on Horizontal Curves for Two-Lane Rural Roads

1991 FHWA-RD-90-074 Pub/Hardcopy Pages 99

This guide provides guidance for the design of horizontal curves on new highway sections and for the reconstruction and upgrading of existing curves on two-lane rural roads.

Snow and Ice Control

Idaho Transportation Department

Pub/CD Format

A good instructional or refresher CD-Rom for the basic care of snowplows, trucks, de-icers, and sanders. It also covers inspection before and after and the safe operation of the equipment. There is a test at the end, which allows the user to see just how much they learned.

Snowfighting Training Materials

2000 SALT Institute

Pub/CD Format

Designed to help local governments across the United States and Canada become more proficient in all aspects of winter operations. Developed by winter operations specialists

Soil and Rock Classification Manual

1987 ODOT

Pub/Hardcopy Pages 50

Contains standardized procedures and guidelines for describing and evaluating soil and rock materials and for preparing exploration logs.

Soil-Cement Construction Handbook

1979 Portland Cement

Pub/Hardcopy Pages 4

The procedures given for building soil-cement base courses represent over 40 years of field experience in the construction of many million square yards of soil-cement.

Soil-Cement Construction Handbook

1995 Portland Cement Assoc.

Pub/Hardcopy Pages 40

This engineering bulletin gives procedure for building soil-cement base courses.

Soils Manual

2002 Asphalt Institute

Pub/Hardcopy Pages 258

Discusses general classification of soils, sampling, AASHTO classification system, Unified soil classification system, and determination of strength values for the design of asphalt pavement structures.

Speed Zone Guidelines

1993 ITE

Pub/Hardcopy Pages 5

Addresses what criteria should be used to establish the need and potential effectiveness of speed zones, and the appropriate speed limit if a zone is established.

Stabilization and Pavement Recycling

1988 ARTBA

Pub/Hardcopy Pages 29

Information on using asphalt, asphalt emulsions, calcium chloride, sodium chloride, Lime, cement, and fly ash.

Standard Specifications Part 1A & 1B: Specifications

2006 AASHTO

Pub/Hardcopy

Specifications for transportation materials and methods of sampling and testing. This is a 2 volume set.

Standard Specifications Part 2A & 2B: Tests

2006 AASHTO

Pub/Hardcopy

Specifications for transportation materials and methods of sampling and testing. This is a 2 volume set.

Standards, Provisional

2006 AASHTO Pub/Hardcopy Pages 386

This manual contains 41 Provisional Standards and was developed with the objective of providing a mechanism for early distribution of materials specifications and tests.

State-of-the-Practice Design, Construction, and Performance of Micro-Surfacing

1994 FHWA SA-94-051 Pub/Hardcopy Pages 58

An overview of the terminology, design, construction, application, and performance of micro-surfacing paving technology.

Stream Stability at Highway Structures (Second Edition)

1995 FHWA IP-90-014 Pub/Hardcopy Pages 143

Guidelines for identifying stream instability problems at highway stream crossings and for the selection and design of appropriate counter measures (metricated version).

Subsurface Imaging of Lava Tubes- Roadway Applications

2005 USDOT, FHWA-CFL/TD-05/005 Pub/Hardcopy Pages 149

This report contains the details of surveys over several areas with known lava tubes, the geological site conditions, overviews of the geophysical methods, summary of the results, and overall recommendations that should be considered for future void detection.

Summary of Trenchless Technology for Use With USDA Forest Service Culverts

2005 USDA Pub/Hardcopy Pages 17

This report summarizes the trenchless technology most appropriate for USDA Forest Service roadway culverts.

Summary Report on Selected Guardrails

1992 FHWA SA-91-050 Pub/Hardcopy Pages 39

Summarizes the testing, field experience, and cost information on three guardrail systems: the modified South Dakota 3-cable guardrail, the modified Minnesota 3-cable guardrail, and the modified three-beam guardrail.

Superior Materials, Advanced Test Methods and Specification in Europe

2004 FHWA-PL-04-007 Pub/Hardcopy Pages 136

Evaluates innovative foreign technologies and practices that could significantly benefit U.S. highway transportation systems.

Surface Transportation Security Volume 1 - Responding to Threats: A Field Personnel Manual

2004 NCHRP Pub/Hardcopy Pages 17

This manual provides a draft template that contains basic security awareness training, stressing noticing and reporting suspicious behavior.

Survey of Speed Zoning Practices

ITE Pub/Hardcopy Pages 26

Geographical representation of the guidelines for speed zoning practices at the city, county and state levels.

TAMS 2.1 Computer Program

2004 UTAH LTAP Pub/CD Format

Techniques for Pavement Rehabilitation

NHW, NHI

Pub/CD Format

The identification, selection and design of rehabilitation alternatives for a given pavement require a logical, step-by-step approach. The information on this CD-Rom provides that via an instructor guide, a reference manual, workbook, and visual aids.

Technology Transfer CD Library 2nd Edition

2002 Washington State DOT

Pub/CD Format

Technology Transfer CD Library 3rd Edition

2002 Washington State DOT

Pub/CD Format

Testing of New Bridge Rail and Transition Designs

1997 Source FHWA-RD-93-058

Pub/Hardcopy Pages 224

The objectives of this study were to develop safer bridge rail and transition designs and to improve design guidelines.

Timber Bridges - Design, Construction, Inspection & Maintenance

1990 USDA,USFS EM 7700-8

Pub/Hardcopy Pages 944

Very close to the everything-you-ever-wanted-to-know book.

Timber Bridges - Various Publications

Pub/Hardcopy Pages

Timber Substructures for Bridge Applications

1994 FHWA-RD-93-024

Pub/Hardcopy Pages 111

This report presents background information on timber substructures, present practical designs, and other information.

Traffic Calming Primer

1998 Pat Noyes and Assoc

Pub/Hardcopy Pages 19

Suggests that the most effective traffic calming efforts take an integrative approach to traffic calming that combines engineering solutions with enforcement efforts, public education campaigns, and neighborhood enhancements.

Traffic Calming: State of the Practice

1999 FHWA RD-99-135

Pub/Hardcopy Pages 244

Covers the history of traffic calming; traffic calming measures; engineering and aesthetic issues; legal authority and liability; emergency response and other agency concerns.

Traffic Control Systems Handbook

1996 FHWA SA-95-032

Pub/Hardcopy Pages 614

Recommends decision making processes in selection, implementation and operations of a traffic control system and describes ITS plans and programs

Traffic Control Systems Handbook

1996 FHWA Pub/Hardcopy Pages 684

This handbook updates the 1985 edition, it is a basic reference in planning, designing and implementing effective traffic control systems by providing an updated compendium of existing traffic control technology.

Traffic Practices Handbook For Local Roads And Streets In Oregon (Volume 2)

1998 ODOT Pub/Hardcopy Pages 102

A continuation from the 1996 volume

Traffic Safety Facts 2002

2004 FHWA Pub/Hardcopy Pages 197

A compilation of motor vehicle crash data from the fatality analysis reporting system and the general estimates system

Traffic Signal Preemption for Emergency Vehicles

2006 FHWA, National Highway Traffic Safety Administration Pub/Hardcopy Pages 35

The purpose of this study is to increase awareness about the benefits and costs of emergency vehicle preemption.

Transportation and Land Development

1988 ITE Pub/Hardcopy Pages 235

Planning and design of circulation systems from the standpoint of site development.

Transportation Expressions

1994 US DOT Pub/Hardcopy Pages 364

A compilation of definitions of transportation terms used throughout the DOT and other U.S government agencies.

Transportation Planning Handbook

1992 ITE Pub/Hardcopy Pages 525

Provides transportation professionals with a basic day-to-day reference source of guidelines and proven techniques.

Transportation Research Record- Low Volume Roads Vol. 1

2007 TRB Pub/Hardcopy Pages 359

This is a collection of papers, written by people from all over the world, covering many aspects of low volume roads.

Transportation Research Record No. 1652 Vol. 1&2

1999 Transportation Research Board Pub/Hardcopy Pages 531

Seventh International Conference on Low-Volume Roads, including planning, administration, environment, design, materials, construction, maintenance, operations and safety.

Transportation Research Record No. 1819 Vol. 1&2

2003 Transportation Research Board Pub/Hardcopy Pages 740

This is a 2 volume set of the Eighth International Conference on Low-Volume Roads.

Universal Operations Guide

2005 © 2005

Pub/CD Format

Urban Drainage Design Manual

2001 FHWA-NHI-01-021

Pub/Hardcopy Pages 475

A practical guide for the design of storm drainage systems associated with transportation facilities.

Utility Cuts in Paved Roads

1996 FHWA

Pub/Hardcopy Pages 42

Focuses on making and restoring utility cuts in a timely and safe manner, with as little disruption of traffic and commerce as possible, and without leaving behind defective pavement.

Water/Road Interaction Field Guide

2000 San Dimas Technology & Development Center

Pub/Hardcopy

This is an illustrated field-going guide that can aid in the recognition, knowledge, and improvement of water/road interaction problems.

Water/Road Interaction Technology Series

1997 USDA, Forest Service

Pub/Hardcopy Pages 464

This series helps communicate state-of-the-art water/road interaction information, identify knowledge gaps, and provide a framework for future research, development and technology needs.

Water/Road Interaction Toolkit and FishXing 2 CDs

San Dimas Technology & Development Center

Pub/CD Format

This 2 CD set consists of 2 interrelated topics:

- Water/Road Interaction Toolkit- this includes the technology series, a field guide and the WEPP (Water Erosion Prediction Projects) Series.
 - FishXing- Software and interactive learning for fish passage through culverts.
-

W-Beam Guardrail Repair and Maintenance

FHWA

Pub/Hardcopy Pages 33

A guide for street and highway maintenance personnel

What are the "Best Practices" of Rural Subarea Planning?

1998 Arizona DOT

Pub/Hardcopy Pages 182

This study intends to ease the research process of determining the best planning practices for rural areas

Winter Maintenance Training Materials - Volume 1

2002 Salt Institute

Pub/CD Format

This presentation program is directed at local government public works technical personnel from the Public Works Director and Engineer, to the Road/Street Superintendent and Public Works Technicians. The sessions review commonly available materials, material effectiveness in fighting ice and snow, and use for various operations. The program also addresses safe handling and storage practices for these winter maintenance materials.

Winter Maintenance Training Materials - Volume 2

2002 Salt Institute Pub/CD Format

The second of a 2 part presentation program directed at local government public works technical personnel from the Public Works Director and Engineer, to the Road/Street Superintendent and Public Works Technicians. The sessions review commonly available materials, material effectiveness in fighting ice and snow, and use for various operations. The program also addresses safe handling and storage practices for these winter maintenance materials.

Winter/Road Interaction Field Guide

2000 USDA Forest Service Pub/Hardcopy Pages 50

An illustrated field-going guide of observable water/road interaction problems damaging to roads, watershed condition, water quality, aquatic life, or public safety.

Work Zone Operations: Best Practices Guidebook

2000 FHWA, AASHTO Pub/CD Format

Designed to give state and local transportation agencies and others access to information about current best practices for achieving work zone mobility and safety. Covers policy and procedures; public relations; education and outreach and more.

Work Zone Safety for Roadway Maintenance Operations

2000 ATC and CAIT at Rutger's University Pub/CD Format

This is an interactive multimedia training course. There are scenarios and simulations, as well as evaluations and an on-line test on the following:

- Traffic Control Devices
 - Traffic Control Zones
 - Typical Applications
 - Flagging Operations and Procedures.
-