



Welcome to Inside ODOT for the month of October 2007

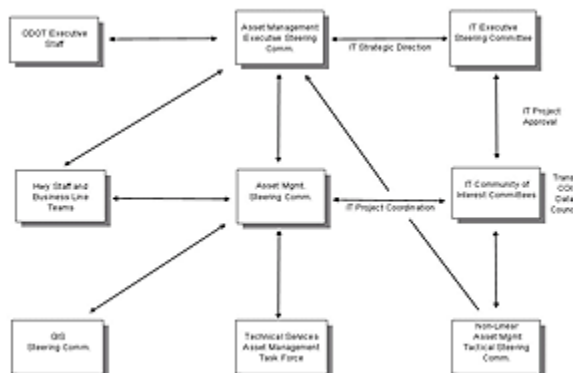
what's inside
Inside ODOT
 News
 Features
 People
 Regular Features
 Transitions

Inside ODOT Home

Intranet Home

Asset Management program continues making progress

Earlier this year, Region 2, District 3 participated in an Asset Management pilot project. The results confirmed that having current and reliable data is critical to successfully managing transportation assets. The pilot also identified gaps in the available data, in the consistency of data collection efforts, and in the lack of an integrated, usable database to store asset data.



ODOT's Asset Management team, with the support of the Executive Team, has been working to find solutions for the challenges identified in the pilot, and in-depth work has continued in the program of planning, building, operating and maintaining transportation assets. The focus now is on providing tools and data to optimize management of Oregon's multi-billion dollar transportation infrastructure. The chart above shows how leadership and business line groups involved in this agency-wide initiative are interacting to achieve these goals. The following is an update on Asset Management partnerships and activities.

Transportation Community of Interest Data Council

The ODOT Transportation Community of Interest is chartered to provide governance to ODOT's information technology investment and initiatives for the following organizational entities:

- Transportation Regions
- Technical Services Branch
- Office of Maintenance and Operations
- Transportation Development Division
- Transportation Safety Division
- Rail Division
- Public Transit Division
- Major Projects Branch
- Highway Program Office

As part of its governance responsibilities, the TransCOI has assumed the role of "Data Council" which provides strategic direction for the TransCOI's Data Management initiative.

A collaborative Data Council Working Group, comprised of Asset Management Integration Section and Information Services staff, has been formed to assist the Data Council by developing core data governance documents for Data Council approval. The Working Group will continue to engage business-line staff to establish additional standards, policies and guidelines that support critical business-line and agency needs.

To date, the TransCOI Data Council has succeeded in approving the Data Council Charter, Transportation COI Data Management Policy, Linear Asset Data Collection Standard and a Glossary of Terms. In final editing are two additional documents that will soon be submitted for Council review and approval: the Linear Asset Data Collection Process and the Field Data Collection Users Guide.

While much of the work thus far has been associated with Asset Management, the Data Council's work will extend to support other major initiatives, including Integrated Systems, Data Warehousing and the Project Delivery System.

Additional information and reference documents are available at <http://intranet.odot.state.or.us/DataGovernanceCouncil/>.

Asset Management Integration Section

The newly formed Asset Management Integration (AMI) Section was created in response to growing momentum within ODOT around Asset Management and the realization that organizational expectations in this area can only be achieved by focused efforts within a defined program area.

This new Section offers a focal point for Asset Management program development in ODOT. However, as Mark Wills, AMI Section manager, has said, "We chose the name carefully because we aren't the ones doing the actual asset management. Instead, we'll continue the work of developing standards everyone can use for gathering and storing data about assets, as well as developing tools that will assist business lines in managing their assets."

One of AMI's responsibilities is to act as a conduit for agency-wide asset management communications among planning, design, construction, operations and maintenance business lines.

Key program and process references developed and maintained by the AMI are:

- Asset Management Implementation and Strategic Plans;
- Asset Management Communication Plan;
- Asset Feature Responsibility Matrix; and
- An ODOT Linear Asset Management Program Roles and Responsibilities document.

To learn the latest about ODOT's Asset Management efforts, visit www.oregon.gov/ODOT/TD/asset_mgmt/.

Existing Management Systems and Asset Management

As acknowledged in the ODOT Asset Management Strategic Plan, one of ten core Asset Management Program principles is to build on the strong management system foundation that already exists in ODOT:

"Asset Management will build on ODOT's good management system work. Much work has already been done to build, maintain, and improve ODOT's Management System structure. This structure and the expertise it represents are vital to ODOT's success. To implement Asset Management, we will build on ODOT's existing management system foundation and move, over time, to a fully integrated Asset Management system."

One benefit of this approach is that the Asset Management Program can use the output and model of the mature Pavement, Safety and Bridge management systems. These systems provide a solid base to move ODOT from the traditional "tactical in nature" system management mode to a more "strategic" approach for making key funding and project decisions, using system-wide tools and data and by looking at the transportation network as a whole.

Technical Services Asset Management Task Force

Earlier this year, Technical Services created an Asset Management Task Force to improve coordination of asset management-related initiatives within the Section. It became clear that sharing processes and procedures developed by others and collaborating on new processes would maximize the agency's resources.

While AMI works on putting the pieces together that will help manage assets, Technical Services has been evaluating priority assets, collecting data and capturing important details such as asset location, type, size and condition. As a result, using lessons learned from the Region 2 pilot, significant new asset management efforts are underway for the following asset groups: Signs, Retaining Walls, Traffic Barriers, Bicycle/Pedestrian and Culverts. These efforts represent a movement in ODOT to make data available for all assets, similar to the data that is available for more established management systems such as Bridge, Pavements and Safety.

Global Positioning System Reference Station Network

A major component of a successful Asset Management program is having current, accurate and reliable data available for decision-making and day-to-day management of assets. To improve the accuracy of data that is collected using Global Positioning System processes, the ODOT Geometronics Unit is partnering with state and local governments, federal agencies and educational institutions to develop a statewide GPS reference station network. For more information on this valuable network, visit the Oregon Real Time GPS Network Web site or contact the Geometronics Unit directly.

Field Data Collection Registry

The Field Data Collection Registry is an online application designed to capture information regarding data collection efforts throughout the department. This application will be a resource for ODOT groups to minimize duplicate data collection efforts. For information regarding the FDCR, contact Scott King, Asset Management Integration analyst, at Scott.W.King@state.or.us.

Outreach Efforts

The primary goal of the Asset Management Communication Plan is to increase understanding of the Asset Management approach and how it will help the agency provide services in the most cost-effective method, while still meeting all regulatory and safety requirements. While the Asset Management program has been ramping up, communication efforts have revolved around the Region 2 Pilot Project, developing core program documents, and coordinating with internal partners. Outreach efforts will soon extend to the Regions.

Recently, AMI Section staff attended a Region 3 Tech Center all-staff meeting and the statewide District Managers' meeting to provide an overview of the Asset Management Program and to solicit input into issues such as data collection, data management and decision-making. The AMI Section will be meeting with various other groups over the next few months. If your group would like to set up a presentation and discussion meeting, call Laura Gonzales at (503) 986-3308. For additional information regarding the Asset Management Program, visit the AMI Web site.

In a future Inside ODOT, we'll highlight Region Asset Management reports and review some accomplishments in the areas of data collection and data management in ODOT.

[< Home](#) | [Next >](#)

• • • • •
[News](#) | [Features](#) | [People](#)
[Regular Features](#) | [Transitions](#) | [Contact Us](#)
• • • • •

Inside ODOT as [PDF](#)

Inside ODOT [archive](#)