
Wallowa County's Epidemiological Data on Alcohol, Drugs and Mental Health 2000 to 2010

A product of the
State Epidemiological
Outcomes Workgroup



Gary Halvorson, Oregon State Archives

Oregon
Health
Authority

ADDICTIONS AND MENTAL HEALTH DIVISION

Acknowledgements

This County report is one of a series of epidemiological profiles on substance use and mental health in Oregon. These reports are funded through the Strategic Prevention Framework State Incentive Grant (SPF SIG) from the Substance Abuse and Mental Health Services Administration's (SAMHSA) Center for Substance Abuse Prevention (CSAP).

There are 41 measures on alcohol, drugs and mental health including data from 2000 through 2010. Compilation of the data required hundreds of hours of labor and the support, expertise and contribution of many people. While the Oregon Health Authority (OHA), Addictions and Mental Health Division (AMH) staff assembled, charted and analyzed the information in this report, the following individuals advised us of the most meaningful data measures, collected the data, shared it with us and helped us with presentation and data interpretation.

Jessica vanDiepen, Association of Oregon Community Health Programs

Morgan Cowling, Oregon Coalition of Local Health Officials

Mike Ponder, Applied Social Research and Evaluation

Carisa Dwyer, Sunshine Consulting

Jessie Ickes, Oregon Commission on Children and Families

Lawrence Piper, DHS, Children and Family Services

Leslie Curran, Oregon Department of Education

Kristen Clements-Nolle, University of Nevada, Reno

Cathy Iles, DHS, Transformation Initiative

Oregon Health Authority:

Public Health Division

Juanita Heiman, Program Design and Evaluation Services

Matt Laidler, Injury Prevention

Sarah Ramowski, Adolescent Health

Stacy Schubert, Tobacco Prevention and Education

Addictions and Mental Health Division

Geralyn Brennan, Rick Cady, Jill Dale, Karen LaPointe, Jeff Ruscoe,

Kathy Seubert, Kerryann Woomer, Dagan Wright and Jason Yarmer

Table of Contents

Introduction	i
Prevention Planning	iii
• The Spectrum of Intervention	iii
• The Strategic Prevention Framework	iv
• Six CSAP Strategies	v
Alcohol Measures	
Rate of death from motor vehicle crashes	1
Percent of motor vehicle fatalities that involve alcohol	2
Rate of death from alcohol-induced disease	3
Alcohol abuse or dependence	4
Crimes against persons	5
Current alcohol use by adults	6
Current binge drinking by adults	7
Current heavy use of alcohol by adults	8
Current alcohol use by youth	9
Current binge drinking by youth	10
Drinking and driving among youth	11
Current gambling by youth	12
Early initiation of alcohol use	13
Average age of initial alcohol use	14
Availability of alcohol	15
Perceived risk of harm from alcohol use	16
Perception of parent disapproval of alcohol use	17
Drug Measures	
Rate of drug-induced deaths	18
Drug abuse or dependence	19

Property crimes	20
Current marijuana or hashish use	21
Current illicit drug use other than marijuana	22
Non-medical use of pain relievers in the past year	23
Current marijuana use by youth	24
Past month illicit drug use, other than marijuana	25
Inhalant use by youth	26
Prescription drug use in the past month	27
Early initiation of marijuana use	28
Average age of initial marijuana use	29
Availability of marijuana	30
Availability of illicit drugs	31
Perceived risk of harm from regular marijuana use	32
Perception of parent disapproval of marijuana use	33
Mental Health Measures	
Suicide death rate	34
Attempted suicide by youth	35
Domestic disturbance offenses	36
Major depressive episode among adults	37
Serious psychological distress among adults	38
Youth depression	39
Psychological distress by youth	40
Social and personal development	41
Appendices	
List of measures by subject	A-1
List of measures by data source	A-3
Bibliography	A-5

Data Endnotes

Behavioral Risk Factor Surveillance System A-7

Death Certificate Data A-9

Fatality Analysis Reporting System A-12

National Survey on Drug Use and Health A-13

Oregon Department of Education Annual Report A-17

Oregon Healthy Teens and Student Wellness Surveys A-18

Uniform Crime Reports A-42

Introduction

Substance use and mental health disorders impact families, schools, workplaces and the community. They can cause long-term health problems; lead to premature death; and contribute to injuries, abuse and violence. Difficulties that are early signs or symptoms of disorders can erode an individual's ability to function normally even when symptoms are not severe enough to meet the criteria for diagnosis.

Among adults reporting a mental or substance use disorder in their lifetime, more than half report the onset occurred in childhood or adolescence. As a result, it is important, that children reach the milestones that are the markers of healthy development. Even from early ages social, emotional, cognitive, and other skills help young people grow into healthy adults (1). Because successful development in childhood, adolescence and early adulthood is critical to preventing substance use and mental health disorders, this report provides a substantial amount of data about youth. Whenever possible the adult prevalence data have been split into adults 18 to 25 years old and those 26 or older.

The intent of this report is to facilitate planning, policymaking and program decision-making. These measures were chosen because they are reliable and sensitive indicators of what is happening among Oregonians. The data are collected and analyzed in a standardized way. Data have been collected for a minimum of three years, and have an infrastructure in place to ensure continued collection in order to: assess the community, understand what impact prevention can have and track community-level changes over time.

Information in this report is organized into three sections:

- The introduction provides context and information about Oregon's prevention system and prevention planning.
- The middle section presents each measure, an overview of why the measure is important, how it is defined, and a graph of state and county results.
- The appendices include a list of the measures, a bibliography of the data sources and endnotes that include additional details about the data source and the data presented for each measure.

This report is one of a number of valuable data sources for prevention planners. Follow the links on the next page to additional data that may be useful in community planning.

Health Data		
County	18 or older	Behavioral Risk Factor Surveillance System, Selected Topics by County http://www.dhs.state.or.us/dhs/ph/chs/brfs/county/index.shtml
County	All ages	County Health Rankings (Mobilizing Action Toward Community Health) http://www.countyhealthrankings.org/about-project
County	All ages	Injury Epidemiology http://oregon.gov/DHS/ph/ipe/index.shtml
Region	12 or older	National Survey on Drug Use and Health, 2006-2008 http://www.oas.samhsa.gov/substate2k10/toc.cfm
County	Grades 8 and 11	Oregon Healthy Teens Survey, 2007-2008 http://www.dhs.state.or.us/dhs/ph/chs/youthsurvey/ohteen/2007/county/index.shtml
County	Grades 6, 8 and 11	Oregon Student Wellness Survey, 2010 http://www.oregon.gov/DHS/addiction/student-wellness/county-data.shtml
County	All ages	Oregon Vital Statistics Annual County Data Books http://www.dhs.state.or.us/dhs/ph/chs/data/cdb.shtml
County	All ages	Tobacco Use in Oregon http://oregon.gov/DHS/ph/tobacco/pubs.shtml
Crime Data		
County, City	Adults, Youth < 18	Oregon Annual Uniform Crime Reports http://www.oregon.gov/OSP/CJIS/annual_reports.shtml
County	Adults, Youth < 21	DUII Data Book for Oregon Counties, 1998-2007 http://www.oregon.gov/ODOT/TS/docs/DUII/2007_DUII_Statistics.pdf
Demographic Data		
County, City	All ages	State and County Quick Facts http://quickfacts.census.gov/qfd/index.html
Education Data		
School districts	Grades K to 12	Oregon Education Data Book http://www.ode.state.or.us/search/page/?id=1727
County	Grade K	Kindergarten Readiness Survey Report http://www.ode.state.or.us/search/page/?id=1356

Prevention Planning

Oregon's statewide prevention network is built on three fundamentals:

- The *Spectrum of Intervention* model from the National Academy of Sciences' Institute of Medicine (IOM),
- SAMHSA's Strategic Prevention Framework (SPF) and
- The six *CSAP Strategies* (Center for Substance Abuse Prevention).

The Spectrum of Intervention

The IOM Spectrum of Intervention model provides a framework to help planners target services to clients' needs.



Source: Adapted from IOM, *Reducing Risks for Mental Disorders, Frontiers for Preventive Intervention Research*, 1994.

Prevention programs serve people who have not been diagnosed with a substance abuse or mental health disorder.

- Promotion efforts can be applied to universal, selected or indicated populations. Promoting good physical, mental and emotional health within a developmental framework is a valuable step in changing individual and community norms;
- Universal prevention is directed to the general population and serves to increase awareness of the behaviors and conditions that lead to mental, emotional and substance use disorders;
- Selective prevention serves subgroups of people who are at above average risk for addiction or mental health disorders, or who share specific kinds of risks such as pregnancy, diabetes or poverty; and
- Indicated prevention is provided for individuals who show early, detectable signs of mental, emotional or substance use problems that are not frequent or severe enough to meet the criteria for a diagnosed disorder.

The Strategic Prevention Framework

AMH has adopted SAMHSA’s Strategic Prevention Framework (SPF). The SPF framework takes a lifespan approach to preventing the onset and reducing the progression of substance abuse and mental health disorders and thus reduces related problems in communities.

The SPF requires State and communities to systematically:

Assess their prevention needs based on epidemiological data,

Build their prevention *capacity*,

Develop a strategic *plan*,

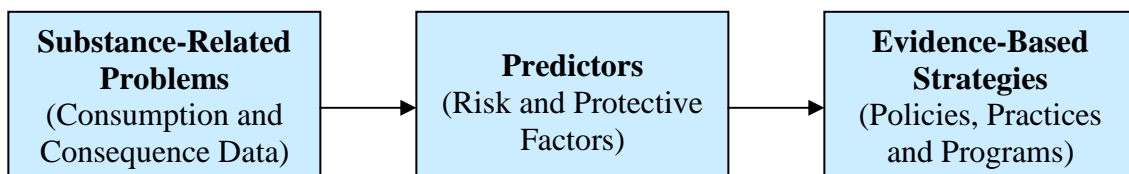
Implement effective community prevention programs, policies and practices, and

Evaluate their efforts for outcomes.



The epidemiological data in this report are used in the assessment phase to help define the problem or issue that needs to be tackled.

SPF Assessment Phase



Planners begin by examining measures that are direct consequences of substance use or mental health disorders. Consequence measures provide an indication of the health, social or economic impact on the community. Next, planners look at the prevalence of the underlying issues contributing to those consequences. Prevalence and consequence data can be examined from different perspectives such as the size or magnitude, severity, trends over time and comparisons to defined goals.

Once the epidemiological data are reviewed, planners identify risk factors, protective factors and other predictors. Finally, evidence-based strategies that are effective in addressing the predictive factors, reducing prevalence of the underlying issues and known to have an impact on the consequences are identified.

The Six CSAP Strategies

Using a variety of evidence-based strategies leads to more effective prevention efforts. Prevention strategies have been categorized in a variety of different ways. **SAMHSA/ CSAP** promotes the following **six strategies**(2):

[Information dissemination](#). This strategy provides awareness and knowledge of the nature and extent of substance use, abuse, and addiction and their effects on individuals, families, and communities. It also provides knowledge and awareness of available prevention programs and services. Information dissemination is characterized by one-way communication from the source to the audience, with limited contact between the two. [Note: Information dissemination alone has not been shown to be effective at preventing substance abuse.]

[Education](#). This strategy involves two-way communication and is distinguished from the information dissemination strategy by the fact that interaction between the educator/facilitator and the participants is the basis of its activities. Activities under this strategy aim to affect critical life and social skills, including decision-making, refusal skills, critical analysis (e.g., of media messages) and systematic judgment abilities.

[Alternatives](#). This strategy provides for the participation of target populations in activities that exclude substance use. The assumption is that constructive and healthy activities offset the attraction to alcohol and other drugs, therefore minimizing resort to the latter. [Note: Alternative activities alone have not been shown to be effective at preventing substance abuse.]

[Problem identification and referral](#). This strategy aims at identification of those who have indulged in illegal/age-inappropriate use of tobacco or alcohol and those individuals who have indulged in the first use of illicit drugs in order to assess if their behavior can be reversed through education. It should be noted, however, that this strategy does not include any activity designed to determine if a person is in need of treatment.

[Community-based process](#). This strategy aims to enhance the ability of the community to more effectively provide prevention and treatment services for substance abuse disorders. Activities in this strategy include organizing, planning, enhancing efficiency and effectiveness of services implementation, interagency collaboration, coalition building, and networking.

[Environmental](#). This strategy establishes or changes written and unwritten community standards, codes, and attitudes, thereby influencing incidence and prevalence of substance abuse in the general population. This strategy is divided into two subcategories to permit distinction between activities that center on legal

and regulatory initiatives and those that relate to the service and action-oriented initiatives.

- (1) National Research Council and Institute of Medicine (2009). Preventing Mental, Emotional, and Behavioral Disorders Among Young People: Progress and Possibilities. Committee on the Prevention of Mental Disorders and Substance Abuse Among Children, Youth, and Young Adults: Research Advances and Promising Interventions. Mary Ellen O’Connell, Thomas Boat, and Kenneth E. Warner, Editors. Board on Children, Youth, and Families, Division of Behavioral and Social Sciences and Education. Washington, DC: The National Academies Press.
- (2) These definitions are taken from the Federal Register, Volume 58, Number 60, March 31, 1993.

Alcohol Measures

- Measure 1 Rate of death from motor vehicle crashes
- Measure 2 Percent of motor vehicle fatalities that involve alcohol
- Measure 3 Rate of death from alcohol-induced disease
- Measure 4 Alcohol abuse or dependence
- Measure 5 Crimes against persons
- Measure 6 Current alcohol use by adults
- Measure 7 Current binge drinking by adults
- Measure 8 Current heavy use of alcohol by adults
- Measure 9 Current alcohol use by youth
- Measure 10 Current binge drinking by youth
- Measure 11 Drinking and driving among youth
- Measure 12 Current gambling by youth
- Measure 13 Early initiation of alcohol use
- Measure 14 Average age of initial alcohol use
- Measure 15 Availability of alcohol
- Measure 16 Perceived risk of harm from alcohol use
- Measure 17 Perception of parent disapproval of alcohol use

Alcohol

Mortality

Measure 1

Rate of death from motor vehicle crashes

Why this measure is important

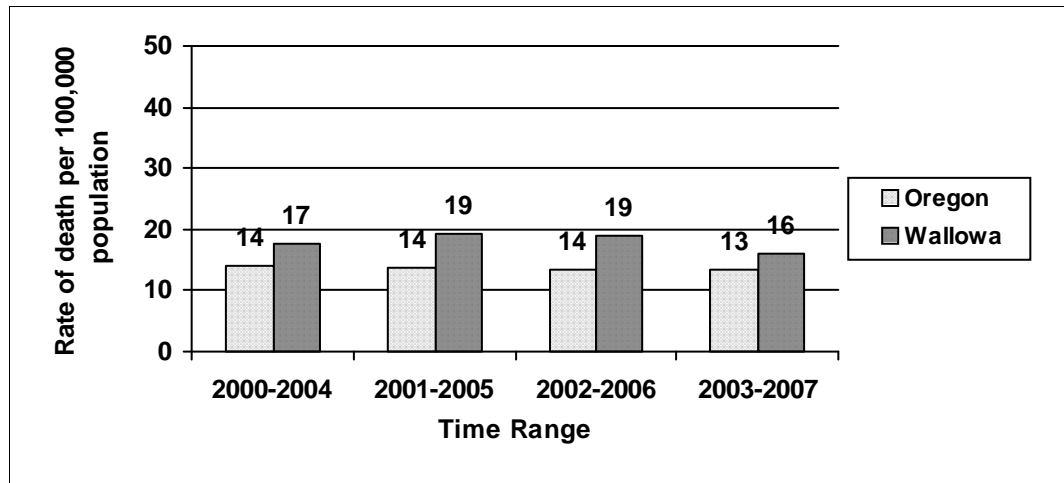
Motor vehicle crashes are a leading cause of death in Oregon, especially among persons 5 to 34 years old. A large portion of motor vehicle fatalities involve alcohol or drugs.

Measure Description

Age-adjusted rate of death due to motor vehicle crashes per 100,000 population (ICD-10 codes V02-V04, V09.0, V12-V14, V19.0-19.2, V19.4-V19.6, V20-V79, V80.3-V80.5, V81.0-V81.1, V82.0-V82.1, V83-V86, V87.0-V87.8, V88.0-V88.8, V89.0-V89.2)

Rate of Death from Motor Vehicle Crashes per 100,000 Population, Age-Adjusted

All Ages



Data Source: Death Certificate Data

Measure 2

Percent of motor vehicle fatalities that involve alcohol

Why this measure is important

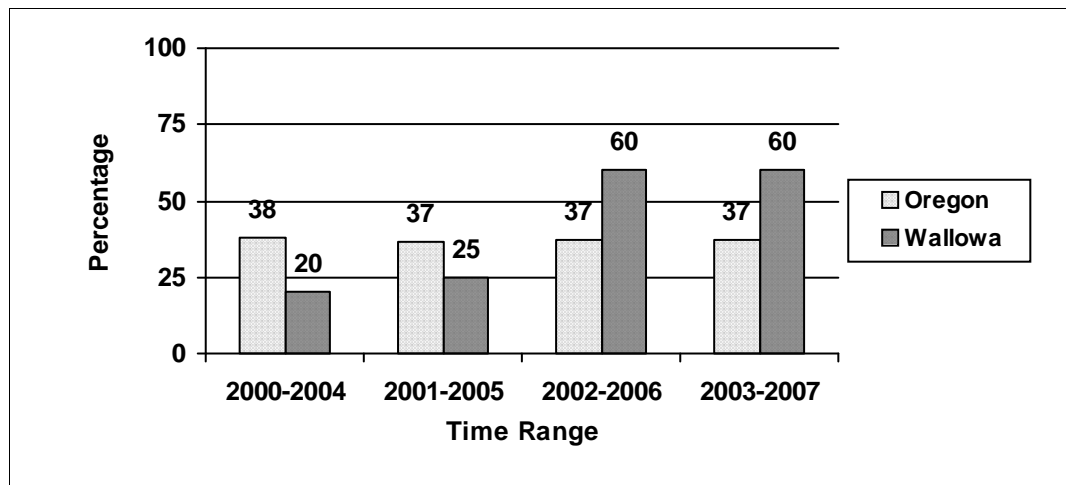
Motor vehicle crash injuries are one of the leading causes of hospitalization and the second leading cause of injury death. Each month, about 3 percent of Oregon adults report driving after having too much to drink; and about 15 percent of Oregon youth rode with a parent or other adult who had been drinking.

Measure Description

Percent of motor vehicle crash fatalities that are the result of a crash in which at least one driver, pedestrian or cyclist had been drinking alcohol

Percent of Motor Vehicle Fatalities that Involve Alcohol

All Ages



Data Source: Fatality Analysis Reporting System

Alcohol

Mortality

Measure 3

Rate of death from alcohol-induced disease

Why this measure is important

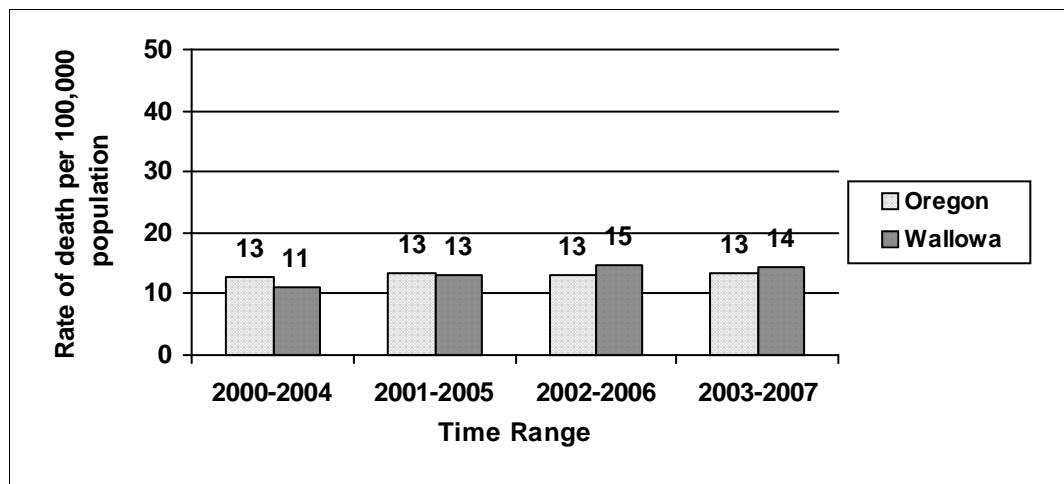
Alcohol is a known carcinogen. A causal link has been established between drinking alcohol and cancers of the mouth, pharynx, esophagus, colon, rectum, liver, larynx and breast. Alcohol consumption is a leading cause of chronic liver disease. It is toxic to many organ systems including the heart, stomach, pancreas and nervous system.

Measure Description

Rate of alcohol-induced deaths per 100,000 population, (including: alcohol-induced disorders such as degeneration of the nervous system, cardiomyopathy, gastritis, liver disease, chronic pancreatitis) (ICD-10 codes E24.4, F10, G31.2, G62.1, G72.1, I42.6, K29.2, K70, K86.0, R78.0, X45, X65, Y15)

Rate of Death From Alcohol-Induced Disease per 100,000 Population, Age-Adjusted

All Ages



Data Source: Death Certificate Data

Alcohol

Morbidity

Measure 4

Alcohol abuse or dependence

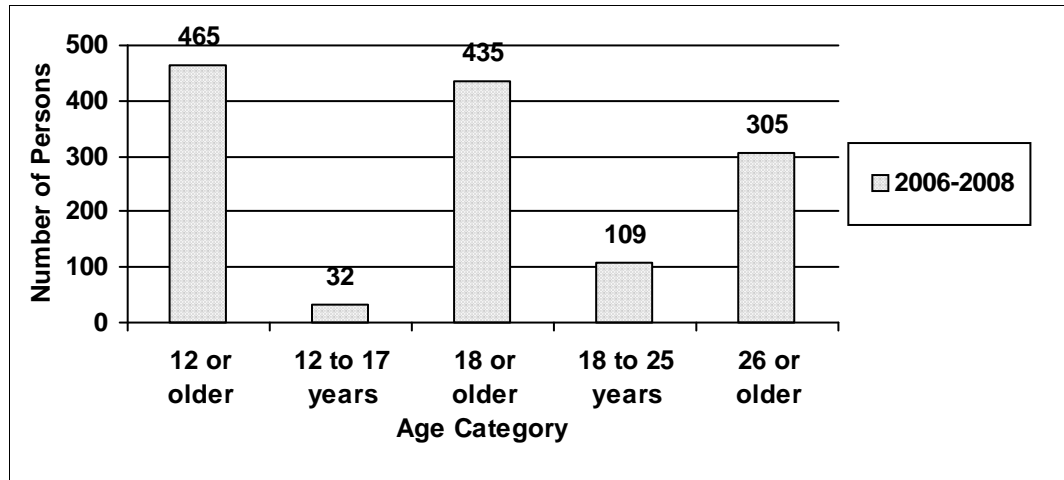
Why this measure is important

Alcohol abuse and dependence are associated with significant social, psychological and physical problems for the user and others. Abuse and dependence are clinical terms used to characterize patterns of alcohol use. Persons meeting the criteria for abuse or dependence from the Diagnostic and Statistical Manual of Mental Health Disorders (DSM-IV) are in need of treatment services.

Measure Description

The series of questions related to dependence ask about health and emotional problems, associated alcohol use such as unsuccessful attempts to cut down on use, tolerance, withdrawal and spending a lot of time engaging in activities related to alcohol use. The questions on abuse ask about problems at work, home and school; problems with family or friends; physical danger; and trouble with the law due to alcohol use.

Estimated Number of Persons with Alcohol Abuse or Dependence in the Past Year in Wallowa County, by Age Category



Data Source: National Survey on Drug Use and Health 2006-2008

Measure 5

Crimes against persons

Why this measure is important

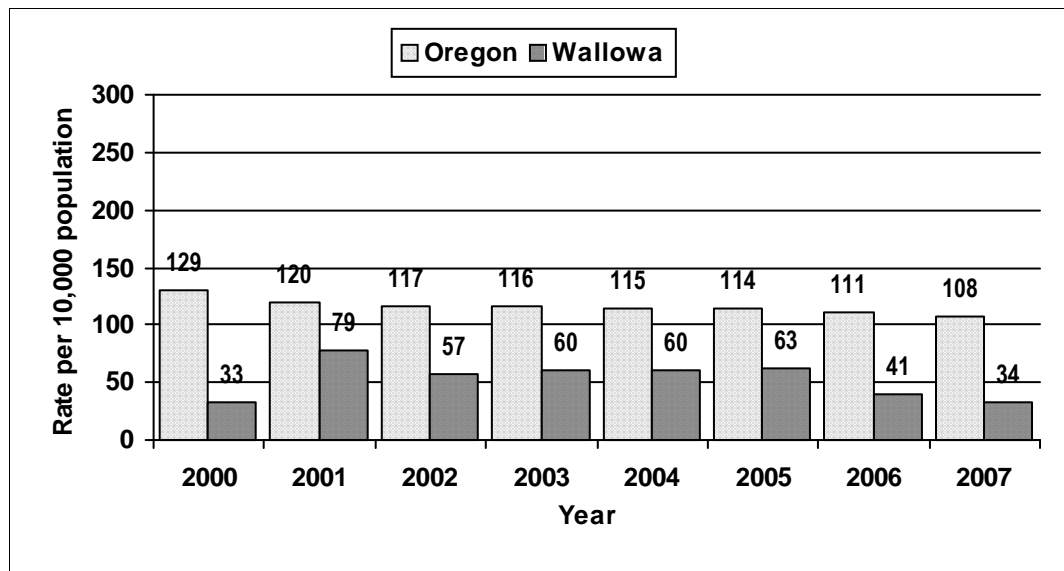
Alcohol is associated with violence. Drinking by the victim or a perpetrator can increase the risk of assaults and assault-related injuries. Approximately 30 percent of physical assaults, 23 percent of sexual assaults and 3 percent of robberies are attributable to alcohol. Oregon has a state goal of reducing crimes against persons to less than 115 per 10,000 population by 2010. This goal has already been reached in 28 counties.

Measure description

Rate of crimes against persons (homicide, rape, kidnapping, assault) reported to police per 10,000 population

Rate of Crimes Against Persons per 10,000 Population

All ages



Data Source: Uniform Crime Reports

Alcohol

Adults

Measure 6

Current alcohol use by adults

Why this measure is important

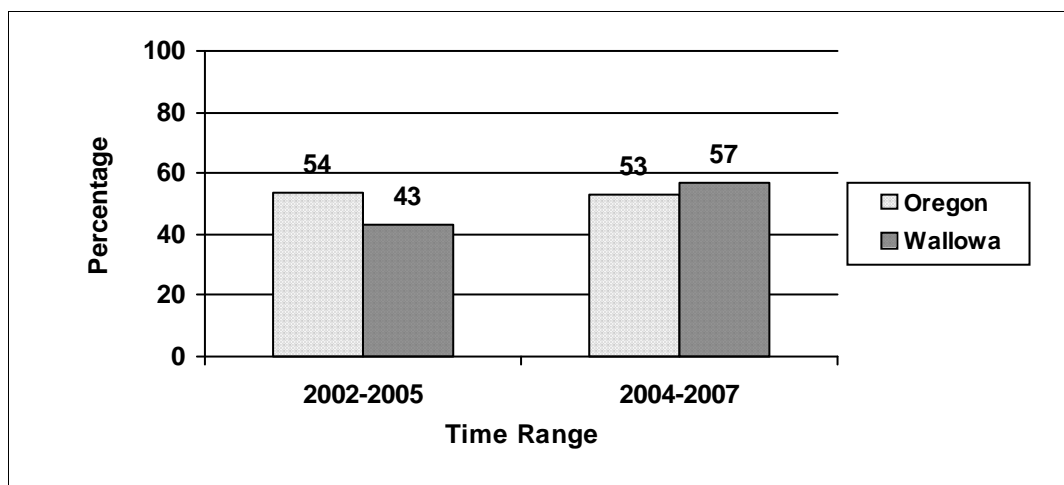
More than 1,000 Oregonians die each year from alcohol-related causes. Alcohol use, especially heavy drinking and binge drinking, results in negative health consequences and contributes to crime and violence against persons. Even moderate alcohol consumption can lead to negative consequences such as alcohol-related motor vehicle crashes, birth defects and harmful interactions with medications.

Measure Description

During the past 30 days, have you had at least one drink of any alcoholic beverage such as beer, wine, a malt beverage or liquor?

Percent of Adults Who Report Any Use of Alcohol in the Past 30 Days

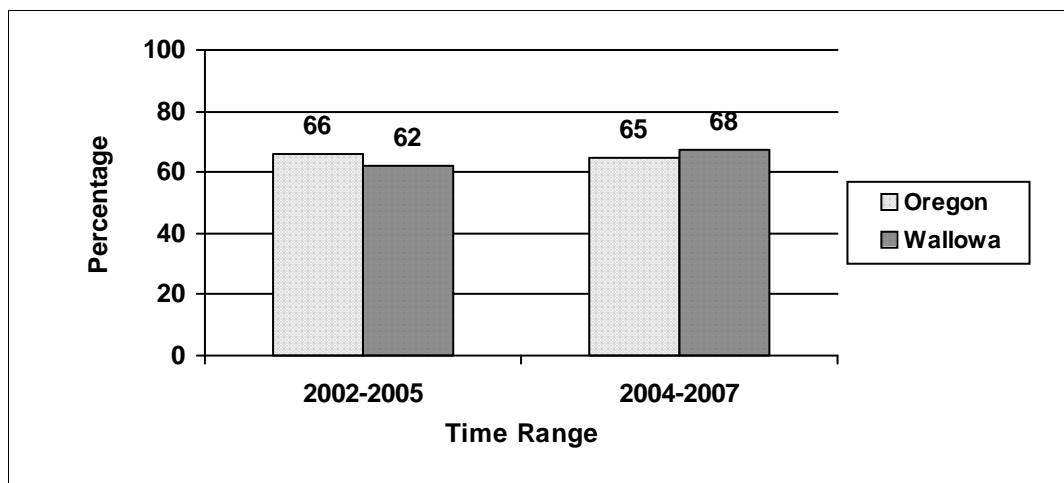
Females, 18 or older



Data Source: Behavioral Risk Factor Surveillance System

Percent of Adults Who Report Any Use of Alcohol in the Past 30 Days

Males, 18 or older



Data Source: Behavioral Risk Factor Surveillance System

Measure 7

Current binge drinking by adults

Why this measure is important

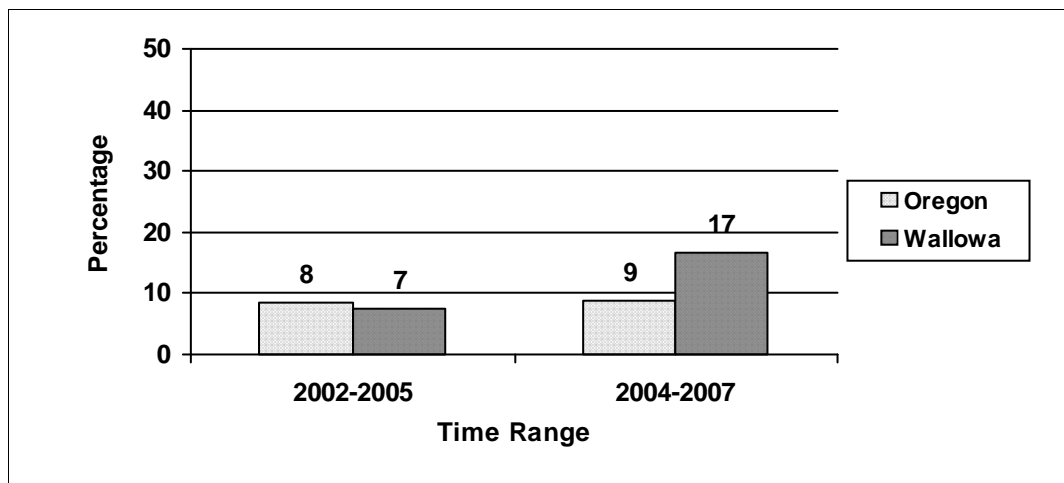
Binge drinking is defined as consumption of five or more drinks by men or four or more drinks by women in a short time span. Binge drinking is strongly associated with injuries, motor vehicle crashes, violence, fetal alcohol spectrum disorder (FASD), alcohol related neurological disorder (ARND), chronic liver disease and a number of other chronic and acute conditions.

Measure Description

Considering all types of alcoholic beverages, how many times during the past month did you have five (four for women) or more drinks on an occasion?

Percent of Adults Who Report Binge Drinking in the Past 30 Days

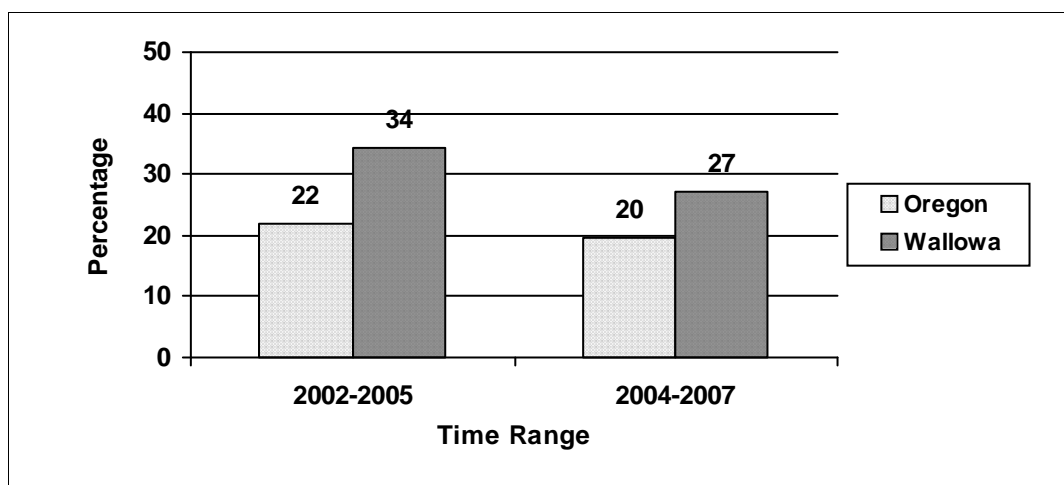
Females, 18 or older



Data Source: Behavioral Risk Factor Surveillance System

Percent of Adults Who Report Binge Drinking in the Past 30 Days

Males, 18 or older



Data Source: Behavioral Risk Factor Surveillance System

Measure 8

Current heavy use of alcohol by adults

Why this measure is important

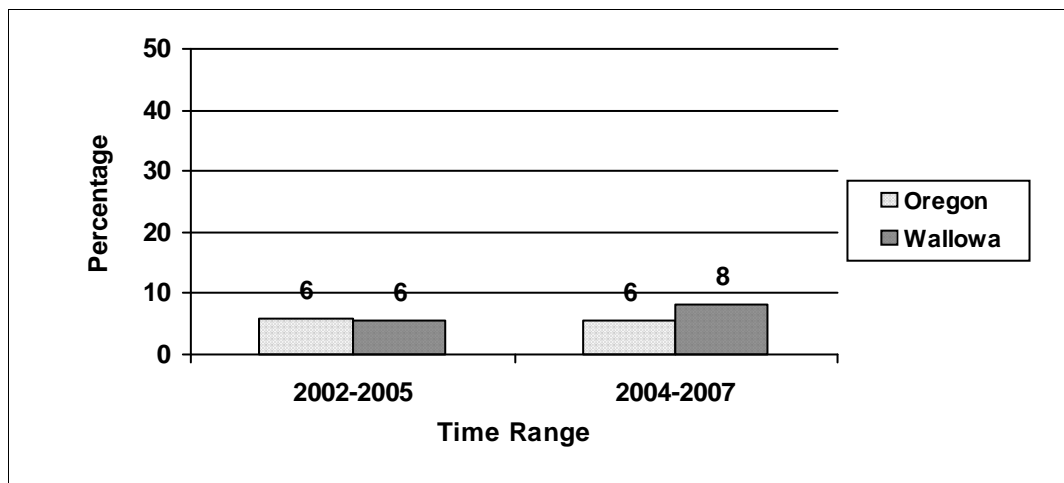
Heavy use of alcohol refers to alcohol consumption at levels that exceed U.S. Dietary Guidelines. Men who drink more than two drinks per day and women who drink more than one drink per day are at increased risk for a variety of adverse health outcomes, including alcohol abuse and dependence. Heavy drinking is associated with heightened levels of all-cause mortality.

Measure Description

During the past 30 days, on the days when you drank, about how many drinks did you drink?

Percent of Adults Who Were Heavy Drinkers in the Past 30 Days

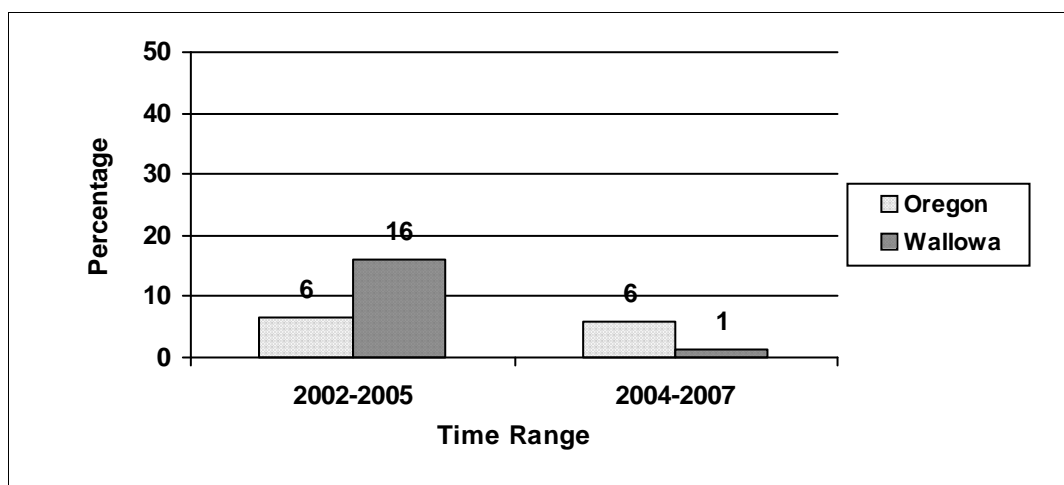
Females, 18 or older



Data Source: Behavioral Risk Factor Surveillance System

Percent of Adults Who Were Heavy Drinkers in the Past 30 Days

Males, 18 or older



Data Source: Behavioral Risk Factor Surveillance System

Measure 9

Current alcohol use by youth

Why this measure is important

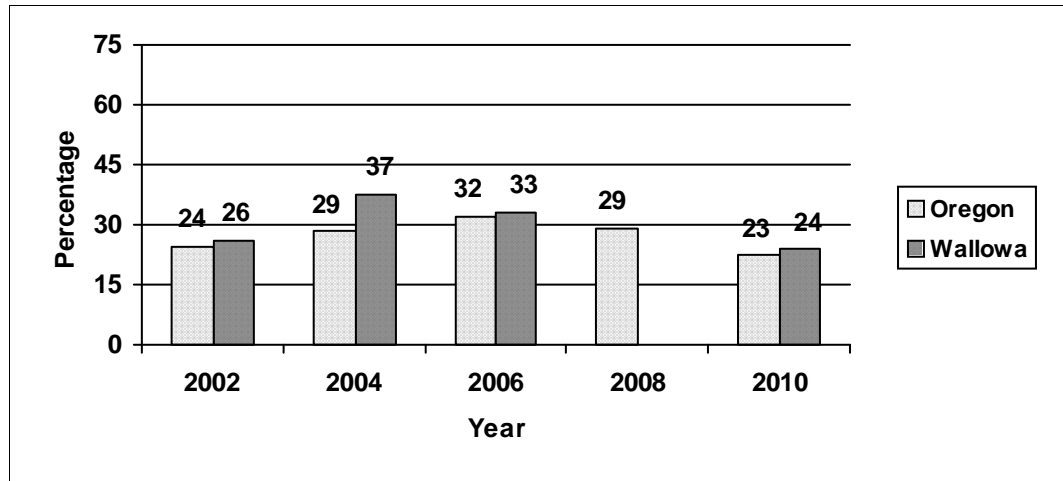
An American Medical Association report shows that adolescent drinkers perform worse in school, are more likely to fall behind and have an increased risk of social problems, depression, suicidal thoughts and violence. Even occasional heavy drinking injures young brains. Oregon has a goal of reducing 8th grade alcohol use to less than 17 percent by 2010. Two counties met this goal.

Survey question(s)

*During the past 30 days, on how many days did you have at least one drink of alcohol?

Percent of Youth Who Drank Alcohol on One or More Days in the Past 30 Days

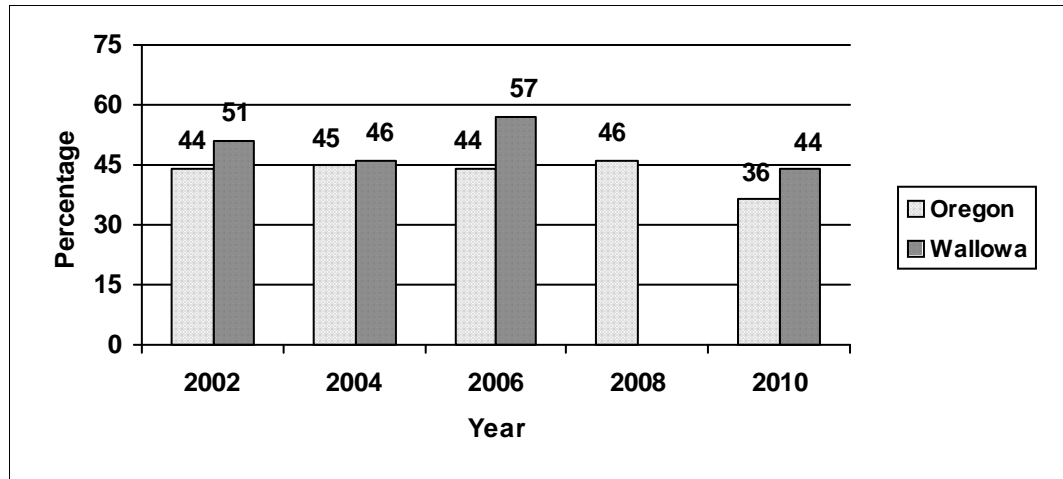
8th grade



Data Source: Oregon Healthy Teens Survey, and Oregon Student Wellness Survey

Percent of Youth Who Drank Alcohol on One or More Days in the Past 30 Days

11th grade



Data Source: Oregon Healthy Teens Survey, and Oregon Student Wellness Survey

* Prior to 2009, the survey question was "On how many occasions (if any) have you had beer or wine (non-religious) or hard liquor to drink during the past 30 days?"

Measure 10

Current binge drinking by youth

Why this measure is important

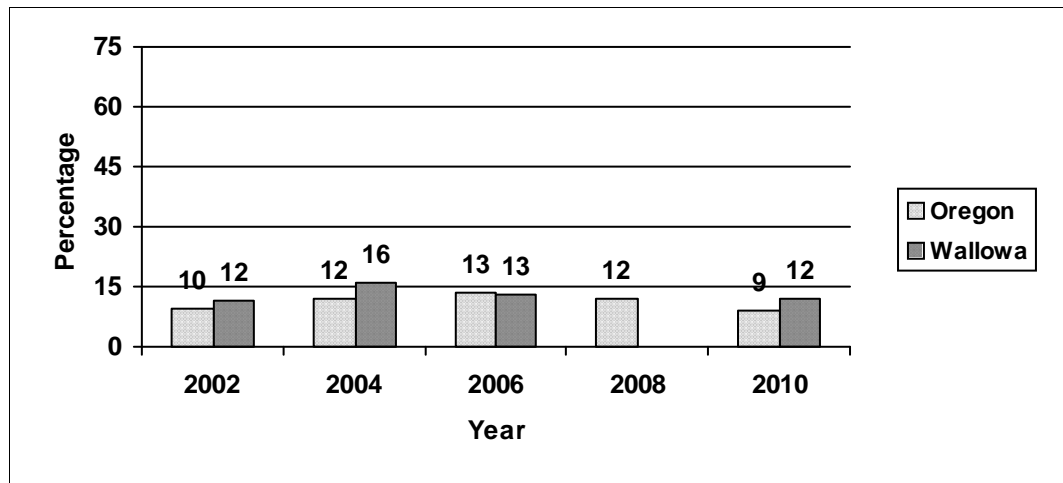
Young people who consume alcohol are more likely than adults to binge drink. Youth who binge drink are much more likely to engage in other risky behaviors such as drug use, risky sexual behavior and aggressive antisocial behavior. Binge drinking is strongly associated with injuries, motor vehicle crashes, violence, and a number of chronic and acute health conditions.

Survey question(s)

During the past 30 days, on how many days did you have 5 or more drinks of alcohol in a row, that is, within a couple hours?

Percent of Youth Who Report Binge Drinking in the Past 30 Days

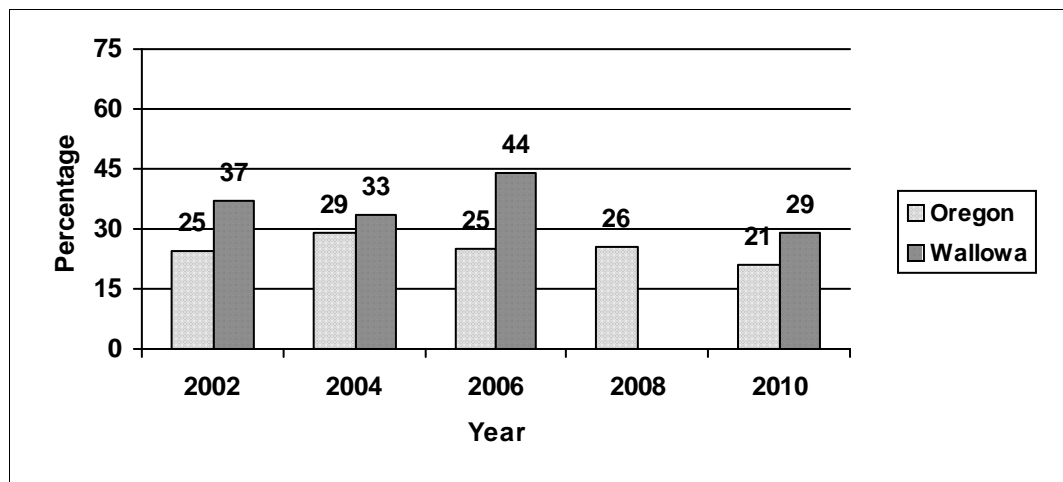
8th grade



Data Source: Oregon Healthy Teens Survey, and Oregon Student Wellness Survey

Percent of Youth Who Report Binge Drinking in the Past 30 Days

11th grade



Data Source: Oregon Healthy Teens Survey, and Oregon Student Wellness Survey

Measure 11

Drinking and driving among youth

Why this measure is important

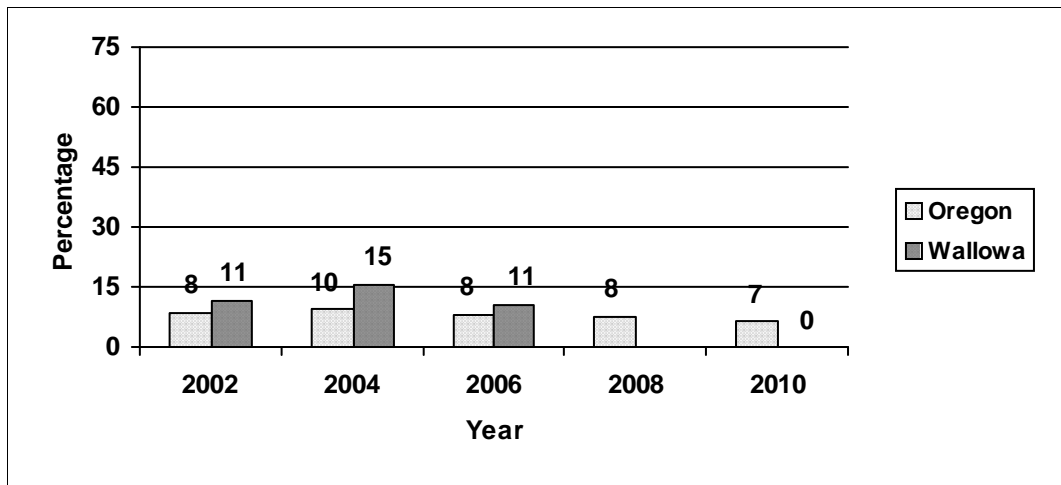
Alcohol consumption impairs a person's ability to operate a motor vehicle in a safe manner. More than a quarter of the motor vehicle fatalities for persons under 21 involved alcohol. Motor vehicle crashes are the leading cause of death for persons 15 to 19 years.

Survey question(s)

During the past 30 days, how many times did you drive a car or other vehicle when you had been drinking alcohol?

Percent of Youth Who Drove When They Had Been Drinking Alcohol

11th grade



Data Source: Oregon Healthy Teens Survey, and Oregon Student Wellness Survey

Measure 12

Current gambling by youth

Why this measure is important

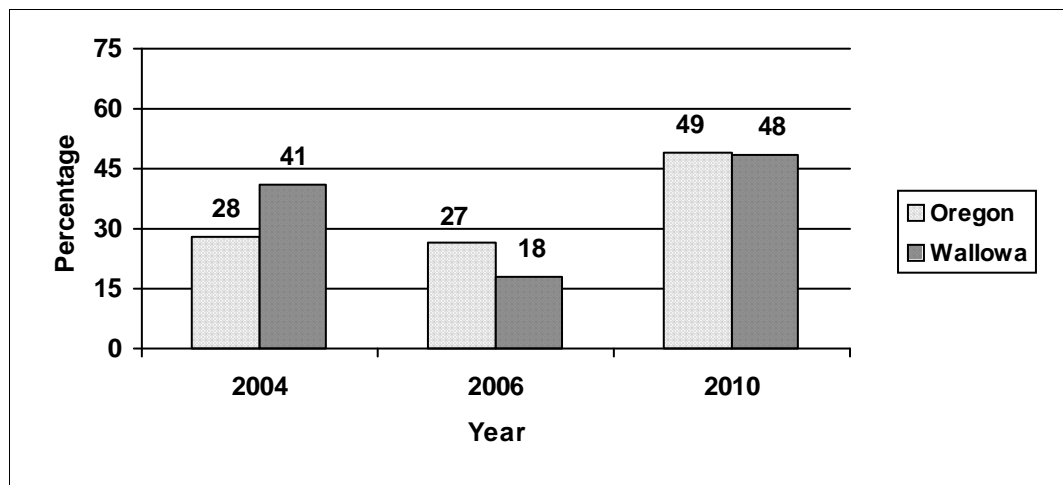
Gambling can be addictive. In Oregon, youth who engage in gambling are more likely to be involved in other risky behaviors including drinking alcohol, smoking marijuana and fighting. Problem gambling prevention should be included in existing prevention programs, curricula and activities.

Survey question(s)

*Gambling involves betting anything of value on a game or event. Please mark ALL the different types of gambling that you have bet on, if any, during the last 30 days. (e.g. lottery tickets, dice or coin flips, cards, sports teams, games of personal skill, etc.)?

Percent of Youth Who Gambled in the Past 30 Days

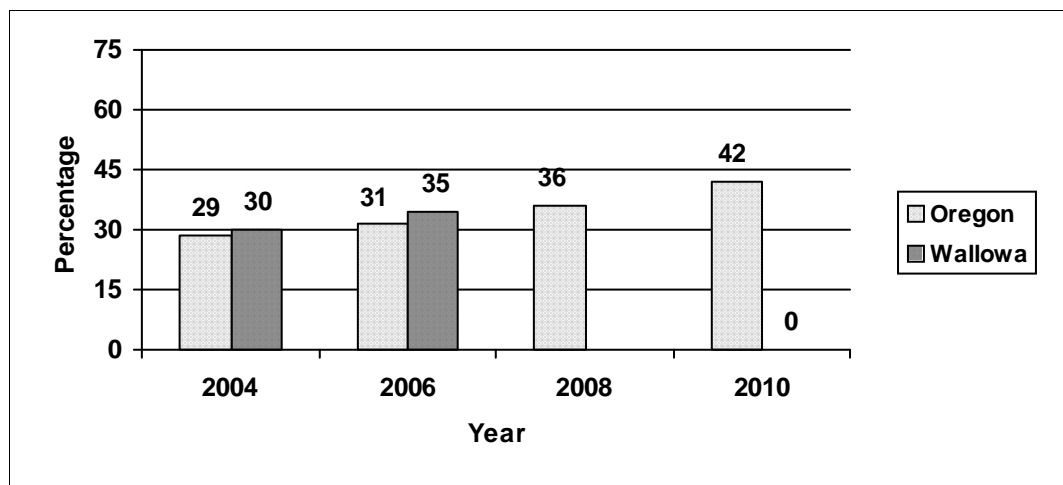
8th grade



Data Source: Oregon Healthy Teens Survey, and Oregon Student Wellness Survey

Percent of Youth Who Gambled in the Past 30 Days

11th grade



Data Source: Oregon Healthy Teens Survey, and Oregon Student Wellness Survey

* Prior to 2008, the survey question was "During the past 12 months, how many times have you gambled (e.g. bought lottery tickets or tabs, bet money on sports teams or card games, etc.)"?

Alcohol

Age of Initial Use

Measure 13

Early initiation of alcohol use

Why this measure is important

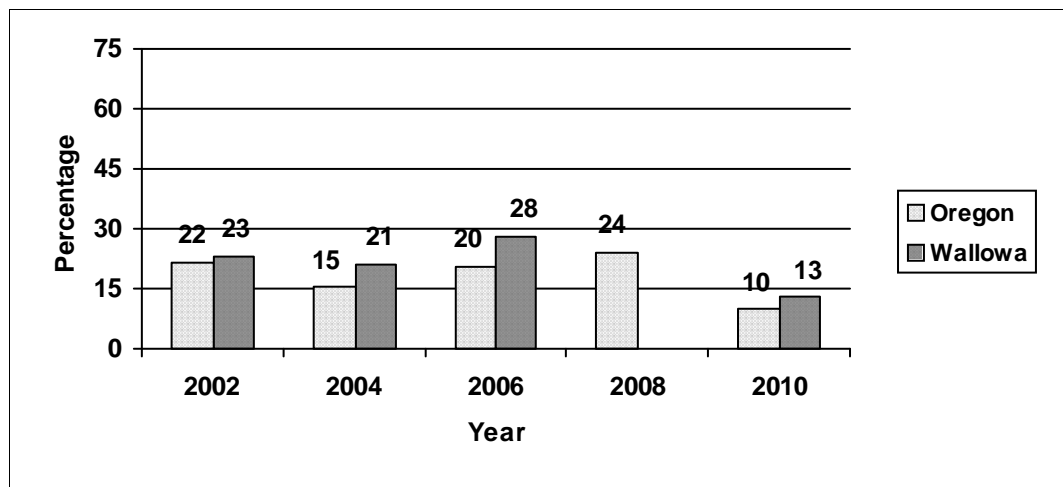
Initiation of alcohol use at young ages, especially in pre-adolescence, has been linked to more intense and problematic levels of use in adolescence and adulthood. Young people who consume alcohol are more likely than adults to binge drink. Researchers found that 45 percent of the people who began drinking before age 14 developed later alcohol dependence, compared with only 10 percent of those who waited until they were 21 or older to start drinking.

Survey question(s)

*How old were you when you had your first drink of alcohol other than a few sips?

Percent of Youth Who Report They Were Less Than 11 Years Old When They Drank Alcohol for the First Time

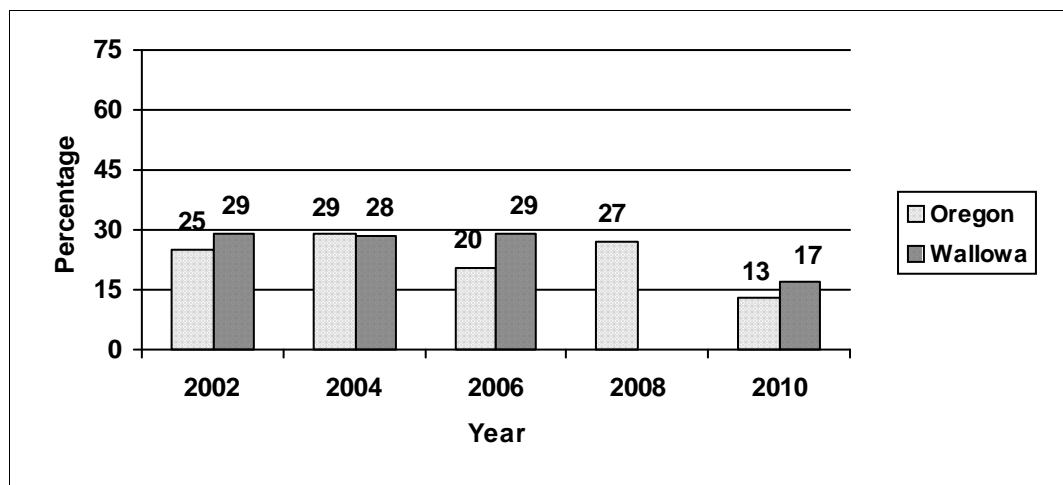
8th grade



Data Source: Oregon Healthy Teens Survey, and Oregon Student Wellness Survey

Percent of Youth Who Report They Were Less Than 13 Years Old When They Drank Alcohol for the First Time

11th grade



Data Source: Oregon Healthy Teens Survey, and Oregon Student Wellness Survey

*Prior to 2009 the question was "How old were you when you had more than a sip or two of beer, wine or hard liquor for the first time?"

Alcohol

Age of Initial Use

Measure 14

Average age of initial alcohol use

Why this measure is important

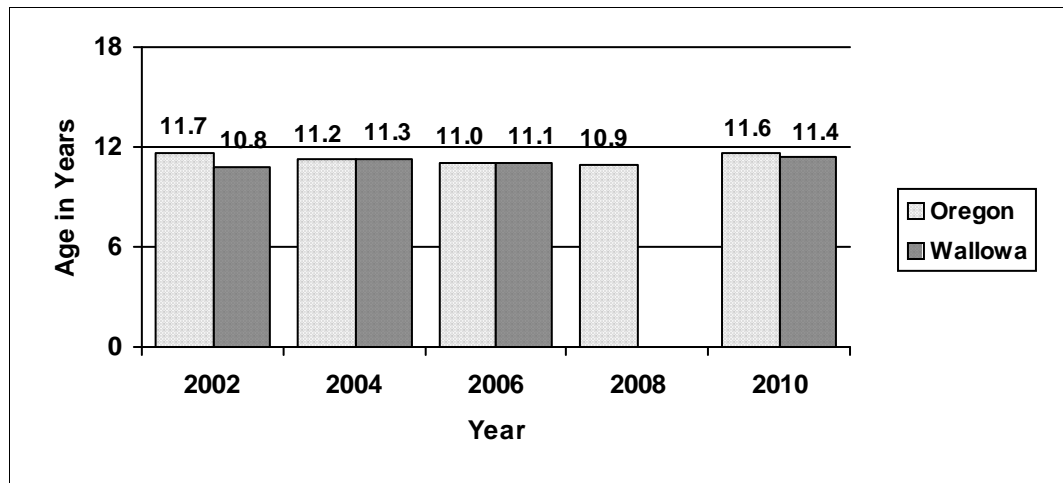
Findings from multiple studies indicate that delaying the age of initiation should be a goal of programs seeking to prevent alcohol misuse. Interventions should focus on strengthening proactive parenting and increasing the perceived harmfulness of alcohol use among elementary and middle school children.

Survey question(s)

*How old were you when you had your first drink of alcohol other than a few sips?

Average Age of Initial Alcohol Use

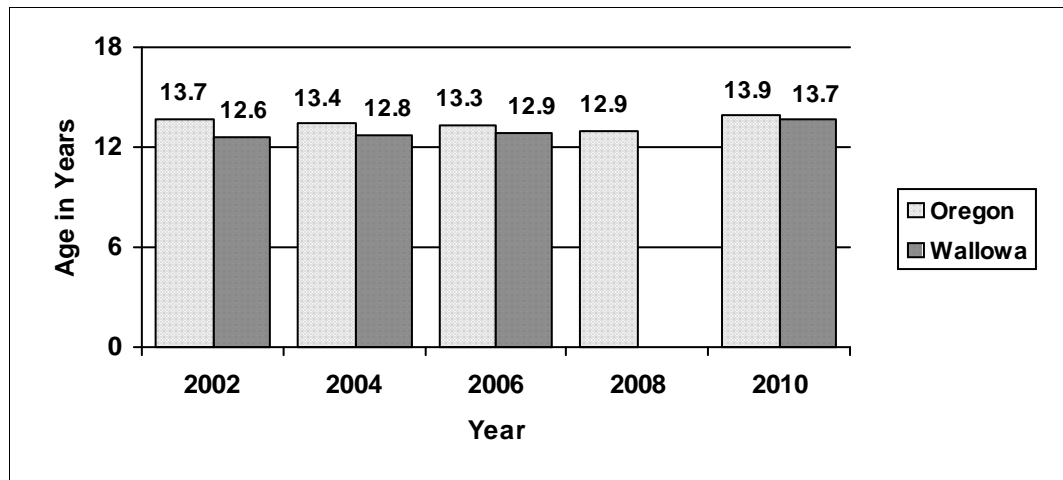
8th grade



Data Source: Oregon Healthy Teens Survey, and Oregon Student Wellness Survey

Average Age of Initial Alcohol Use

11th grade



Data Source: Oregon Healthy Teens Survey, and Oregon Student Wellness Survey

*Prior to 2009 the question was "How old were you when you had more than a sip or two of beer, wine or hard liquor for the first time?"

Measure 15

Availability of alcohol

Why this measure is important

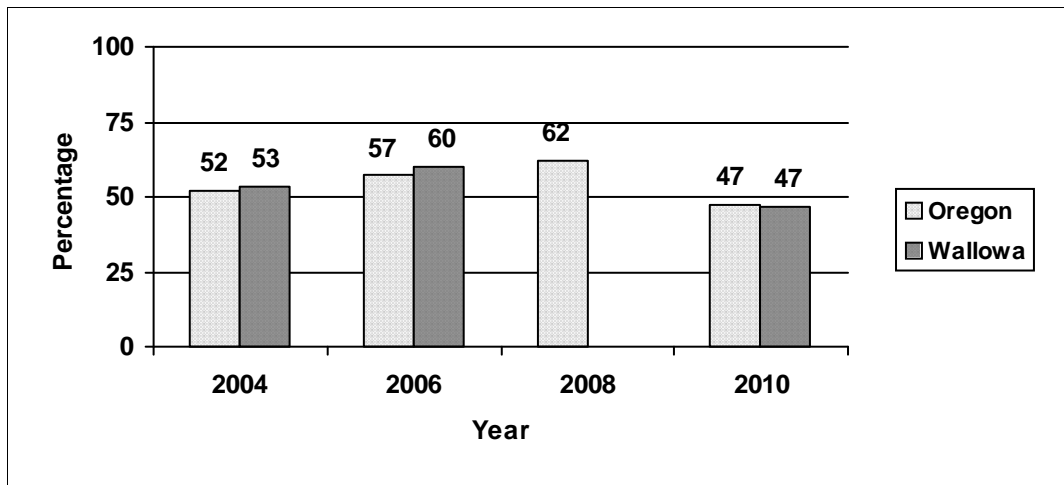
Easy access to alcohol is associated with increased risk of current alcohol use and binge drinking, especially at early ages. Youth obtain alcohol from many sources in addition to retailers, including friends, siblings, parents and taking it from the home without permission. In Oregon it is illegal for persons under the age of 21 to purchase alcohol.

Survey question(s)

If you wanted to get some beer, wine or hard liquor (for example, vodka, whiskey or gin), how easy would it be for you to get some?

Percent of Youth Who Say It Is "Sort of Easy" or "Very Easy" to Get Some Beer, Wine or Hard Liquor

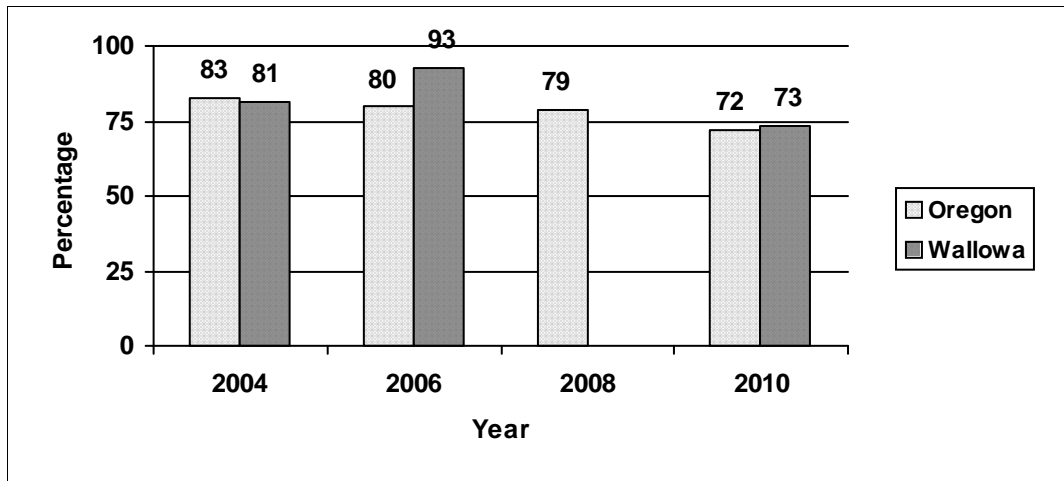
8th grade



Data Source: Oregon Healthy Teens Survey, and Oregon Student Wellness Survey

Percent of Youth Who Say It Is "Sort of Easy" or "Very Easy" to Get Some Beer, Wine or Hard Liquor

11th grade



Data Source: Oregon Healthy Teens Survey, and Oregon Student Wellness Survey

Measure 16

Perceived risk of harm from alcohol use

Why this measure is important

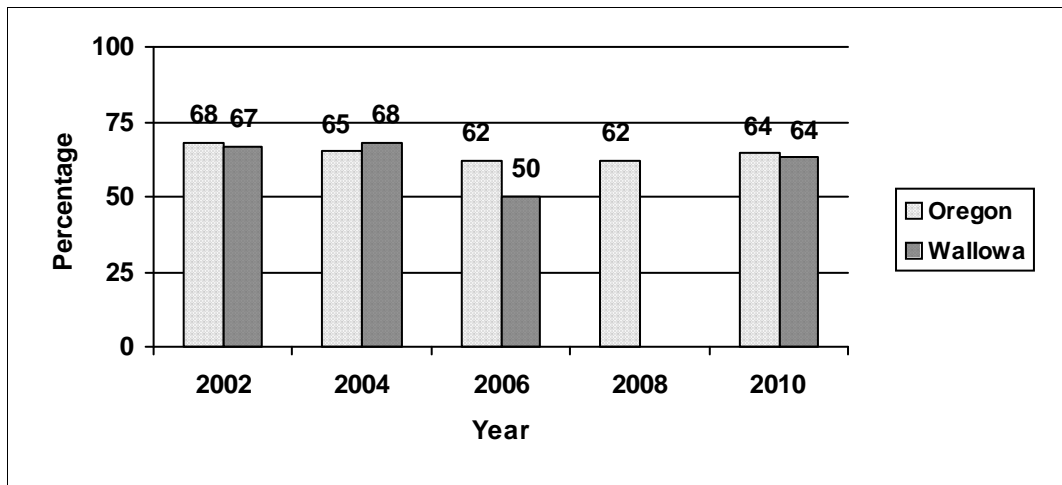
Perceived risk of harm from alcohol use is a deterrent to drinking, especially at early ages. Oregon 8th graders who thought there was "moderate" or "great risk" of harm from drinking alcohol nearly every day were significantly less likely to drink or binge drink than those who thought there was "slight" or "no risk" of harm.

Survey question(s)

How much do you think people risk harming themselves (physically or in other ways) if they take one or two drinks of an alcoholic beverage (beer, wine or hard liquor) nearly every day?

Percent of Youth Who Believe There is "Moderate" or "Great" Risk of Harm from Drinking Nearly Every Day

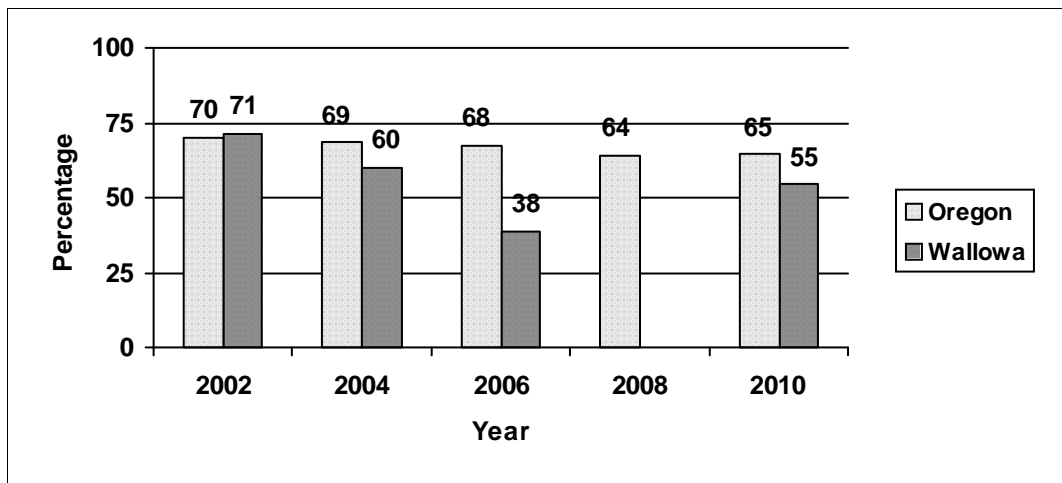
8th grade



Data Source: Oregon Healthy Teens Survey, and Oregon Student Wellness Survey

Percent of Youth Who Believe There is "Moderate" or "Great" Risk of Harm from Drinking Nearly Every Day

11th grade



Data Source: Oregon Healthy Teens Survey, and Oregon Student Wellness Survey

Measure 17

Perception of parent disapproval of alcohol use

Why this measure is important

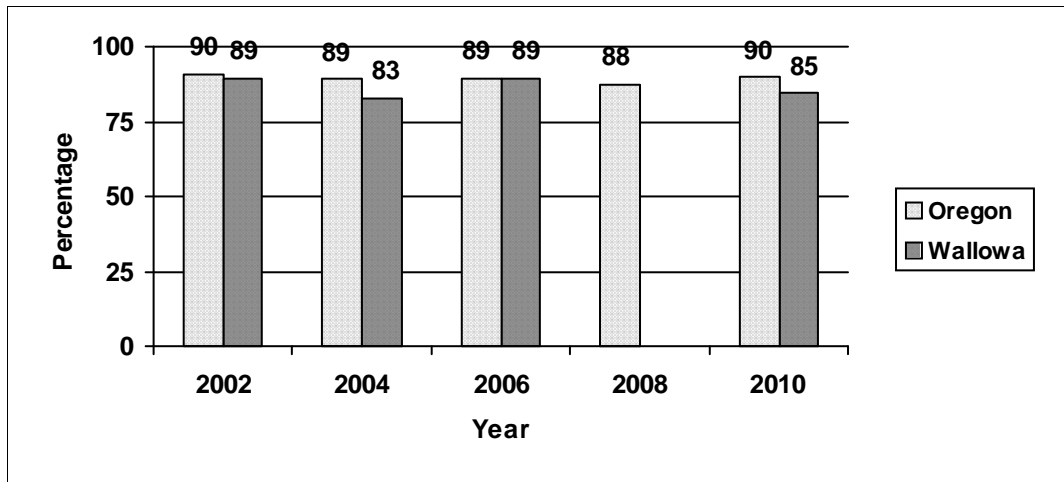
Parents can play an influential role in preventing underage drinking. Youth who know their parents disapprove of underage drinking are less likely to drink alcohol, especially at an early age. Oregon 8th graders who believe their parents would think it is "wrong" or "very wrong" if they drank alcohol were half as likely to drink than youth who believe their parents would think it is "a little bit wrong" or "not wrong at all."

Survey question(s)

*How wrong do your parents feel it would be for you to drink beer, wine, or liquor (for example vodka, whiskey or gin) regularly (at least once or twice a month)?

Percent of Youth Who Say Their Parents Think It Is "Wrong" or "Very Wrong" for Youth to Drink Alcohol

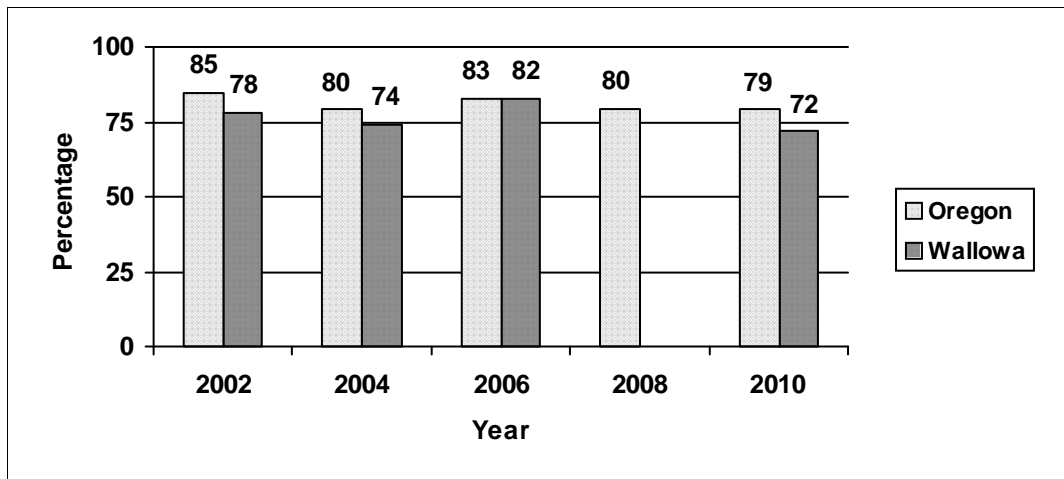
8th grade



Data Source: Oregon Healthy Teens Survey, and Oregon Student Wellness Survey

Percent of Youth Who Say Their Parents Think It Is "Wrong" or "Very Wrong" for Youth to Drink Alcohol

11th grade



Data Source: Oregon Healthy Teens Survey, and Oregon Student Wellness Survey

*Prior to 2009, the question was "How wrong do your parents feel it would be for you to drink beer, wine, or liquor (for example, vodka, whiskey or gin) regularly"?

Drug Measures

- Measure 18 Rate of drug-induced deaths
- Measure 19 Drug abuse or dependence
- Measure 20 Property crimes
- Measure 21 Current marijuana or hashish use
- Measure 22 Current illicit drug use other than marijuana
- Measure 23 Non-medical use of pain relievers in the past year
- Measure 24 Current marijuana use by youth
- Measure 25 Past month illicit drug use, other than marijuana
- Measure 26 Inhalant use by youth
- Measure 27 Prescription drug use in the past month
- Measure 28 Early initiation of marijuana use
- Measure 29 Average age of initial marijuana use
- Measure 30 Availability of marijuana
- Measure 31 Availability of illicit drugs
- Measure 32 Perceived risk of harm from regular marijuana use
- Measure 33 Perception of parent disapproval of marijuana use

Drugs

Mortality

Measure 18

Rate of drug-induced deaths

Why this measure is important

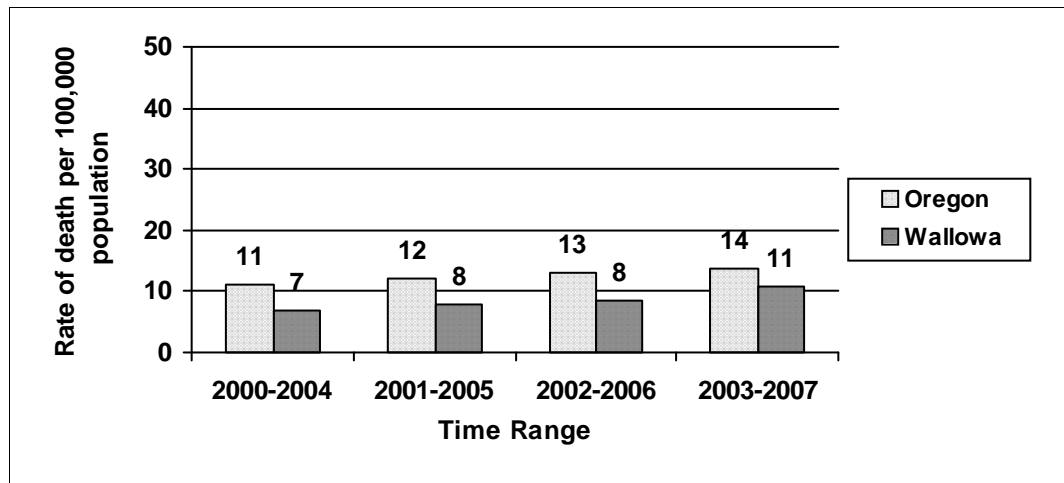
Drug-induced deaths are influenced by programs to prevent: substance abuse, accidental poisoning, suicide and fatal interaction among medications. Deaths may be the direct result of any of a number of prescription, over-the-counter or illicit drugs such as opioids, sedatives, cocaine, stimulants, hallucinogens and solvents. The Healthy People 2010 objective is to reduce the rate of drug-induced deaths to 1.0 per 100,000 population.

Measure Description

Rate of death from drug-induced causes per 100,000 population, age-adjusted. Examples include drug psychosis, drug dependence, suicide, and intentional and accidental poisoning that result from drug use (ICD-10 codes D52.1, D59.0, D59.2, D61.1, D64.2, E06.4, E16.0, E23.1, E24.2, E27.3, E66.1, F11-F16 (.0-.5, .7-.9), F18-F19 (.0-.5, .7-.9), G21.1, G24.0, G25.1, G25.4, G25.6, G44.4, G62.0, G72.0, I95.2, J70.2-J70.4, L10.5, L27.0, L27.1, M10.2, M32.0, M80.4, M81.4, M83.5, M87.1, R78.1-R78.5, X40-X44, X60-X64, X85, Y10-Y14)

Rate of Death from Drug-Induced Causes, Age-Adjusted

All Ages



Data Source: Death Certificate Data

Drugs

Morbidity

Measure 19

Drug abuse or dependence

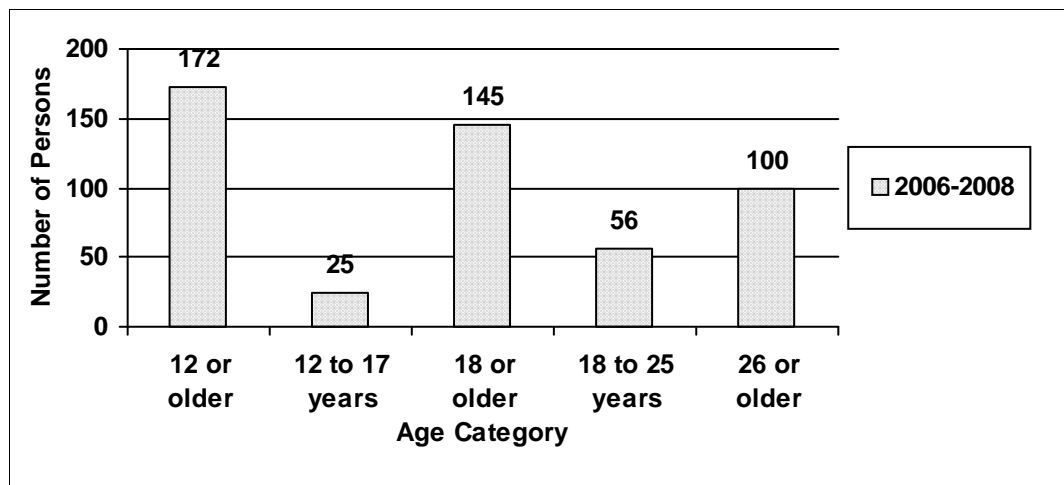
Why this measure is important

Abuse and dependence are clinical terms used to characterize patterns of drug use. Drug abuse and dependence are associated with significant social, psychological and physical problems for the user and others. Persons meeting the criteria for abuse or dependence from the Diagnostic and Statistical Manual of Mental Health Disorders (DSM-IV) need treatment services.

Measure Description

A series of questions are used to identify persons that meet three of seven DSM-IV criteria for dependence, or one or more of the four DSM-IV criteria for drug abuse

Estimated Number of Persons with Drug Abuse or Dependence in the Past Year in Wallowa County, by Age Category



Data Source: National Survey on Drug Use and Health 2006-2008

Measure 20

Property crimes

Why this measure is important

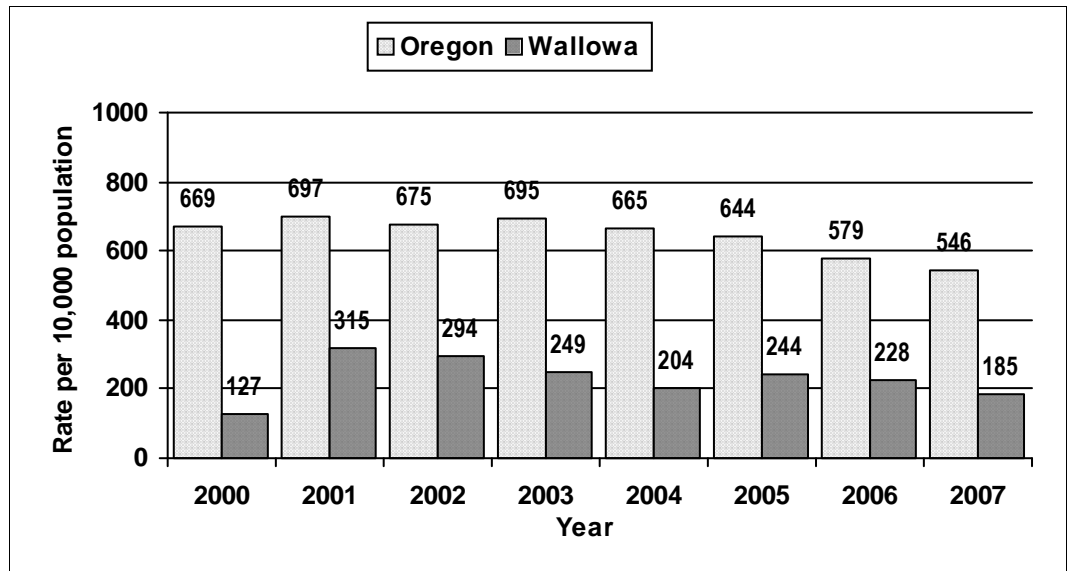
Drug-related property crimes include burglary, larceny and motor vehicle theft. These crimes frequently are committed to obtain money to purchase drugs. Drug-attribution rates for property crime range from approximately 7 percent for motor vehicle theft to 30 percent for burglary and larceny. Oregon has a state goal of reducing property crimes to less than 591 per 10,000 population by 2010. In 2007, 31 counties met this goal.

Measure description

Rate of property crimes (larceny, burglary, MV theft) reported to police per 10,000 population

Rate of Property Crimes per 10,000 Population

All ages



Data Source: Uniform Crime Reports

Drugs

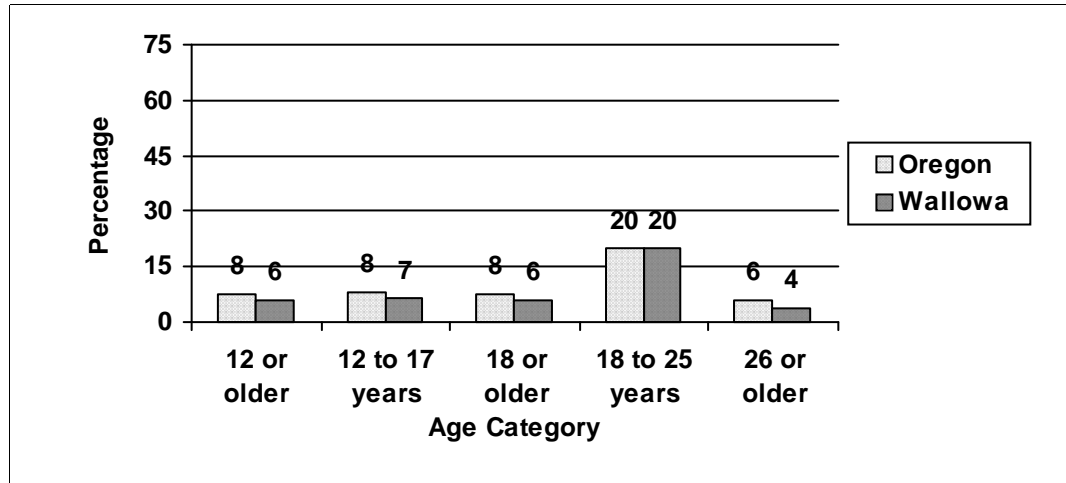
Past 30 Days

Measure 21 Current marijuana or hashish use

Why this measure is important *The use of marijuana can produce adverse physical, mental, emotional and behavioral changes and can be addictive. Adverse health effects include respiratory illnesses, memory impairment and weakening of the immune system.*

Measure Description How long has it been since you last used marijuana or hashish?

Percent of Persons Who Used Marijuana or Hashish in the Past 30 Days, by Age Category



Data Source: National Survey on Drug Use and Health 2006-2008

Drugs

Past 30 Days

Measure 22

Current illicit drug use other than marijuana

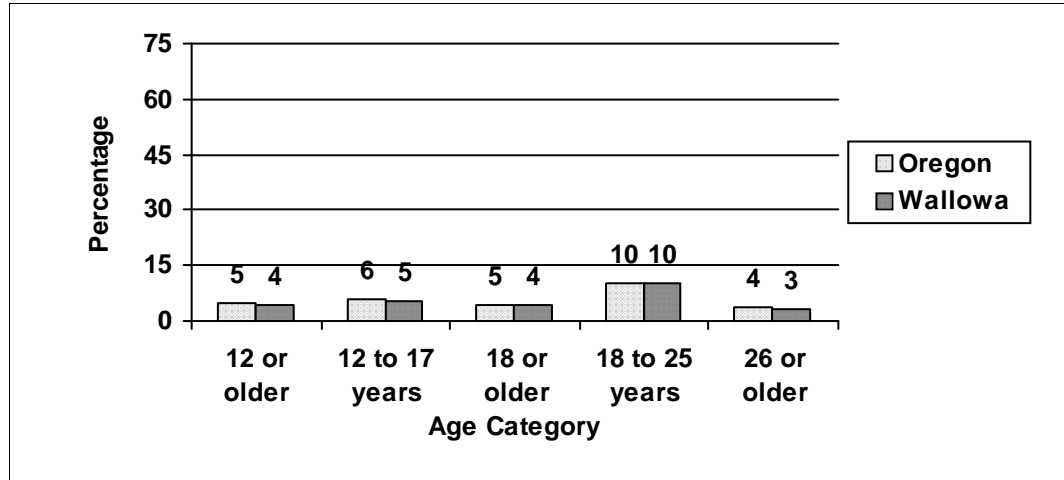
Why this measure is important

Both chronic and occasional drug use can result in serious medical conditions stemming from the drug itself, the method of drug administration, or the use of contaminated equipment. Chronic drug use can lead to dependence and serious medical conditions.

Measure Description

Past 30 day use of cocaine, inhalants, hallucinogens, heroin, or prescription drugs

Percent of Persons Who Used Illicit Drug(s) Other Than Marijuana in the Past 30 Days, by Age Category



Data Source: National Survey on Drug Use and Health 2006-2008

Drugs

Past year

Measure 23

Non-medical use of pain relievers in the past year

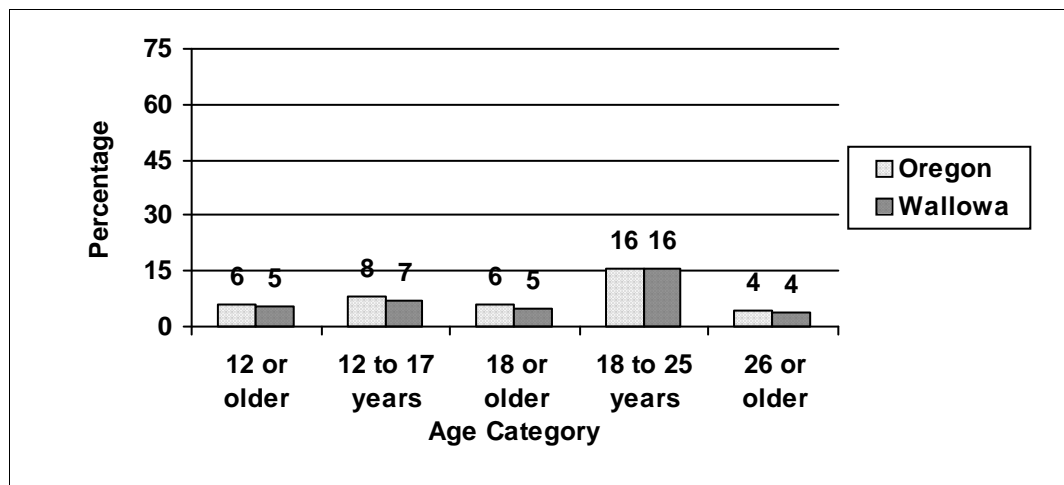
Why this measure is important

Prescription pain relievers are Oregon's fourth most prevalent substance of abuse following alcohol, tobacco and marijuana. Most people who are prescribed opioids for pain do not become addicted to the drugs. However, many people believe prescription drugs are safer than illicit or "street" drugs and it can be easier to obtain them.

Measure Description

How long has it been since you last used any prescription pain reliever that was not prescribed for you, or that you took only for the experience or feeling it caused?

Percent of Persons Who Used Prescription Pain Relievers to Get High in the Past Year, by Age Category



Data Source: National Survey on Drug Use and Health 2006-2008

Measure 24

Current marijuana use by youth

Why this measure is important

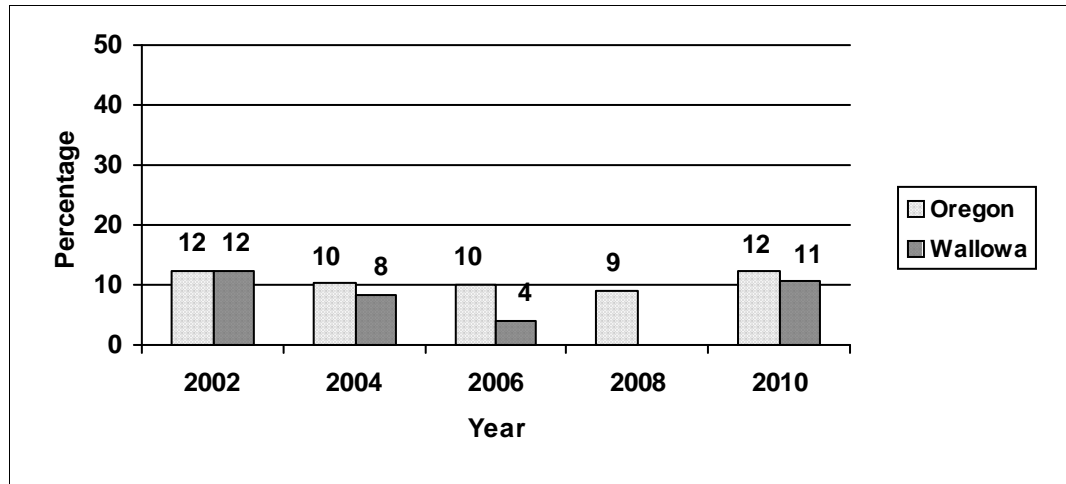
The use of marijuana can produce adverse physical, mental, emotional and behavioral changes and can be addictive. Short-term effects include problems with memory and learning, difficulty thinking, loss of coordination, increased anxiety and panic attacks. Adverse health effects include respiratory illnesses, memory impairment and weakening of the immune system.

Survey question(s)

During the past 30 days, how many times did you use marijuana?

Percent of Youth Who Used Marijuana One or More Times in the Past 30 Days

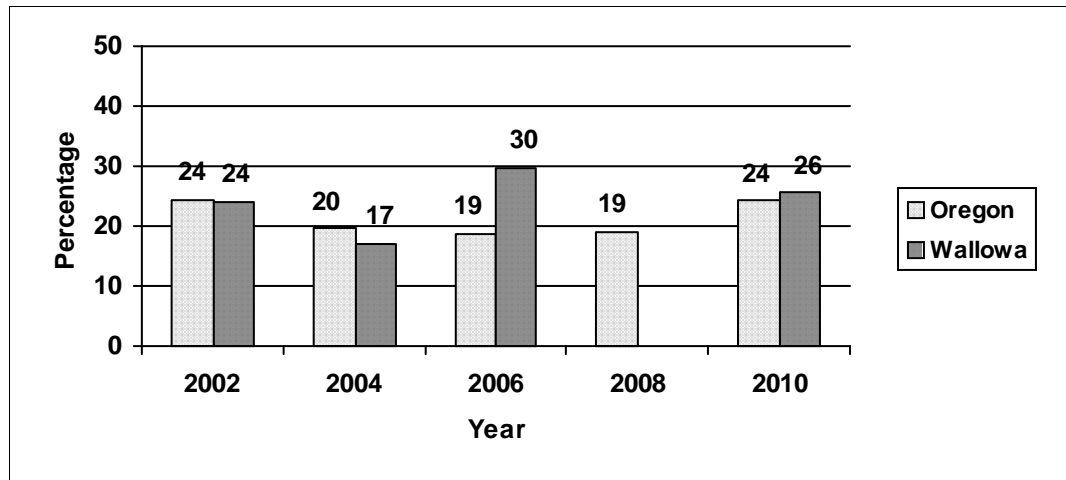
8th grade



Data Source: Oregon Healthy Teens Survey, and Oregon Student Wellness Survey

Percent of Youth Who Used Marijuana One or More Times in the Past 30 Days

11th grade



Data Source: Oregon Healthy Teens Survey, and Oregon Student Wellness Survey

Measure 25

Past month illicit drug use, other than marijuana

Why this measure is important

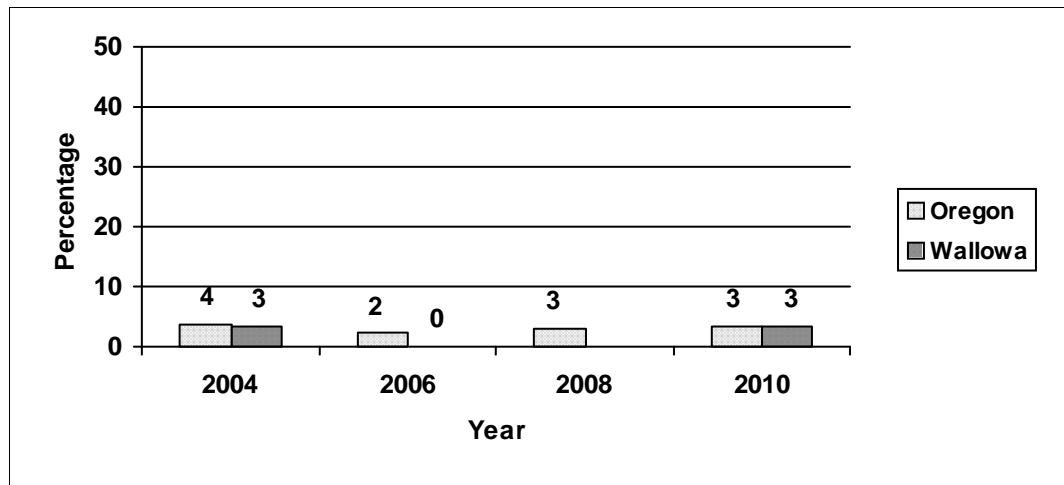
Both chronic and occasional drug use can result in serious medical conditions. Illegal use of drugs such as heroin, cocaine and methamphetamine is associated with other serious consequences including cutting classes, delinquency and high risk sexual activity.

Survey question(s)

Summary variable: Past month illicit drug use other than marijuana, including stimulants, cocaine, heroin, ecstasy and/or LSD (excludes inhalants or prescription drugs)

Percent of Youth Who Used Illicit Drug(s) Other Than Marijuana in the Past 30 Days

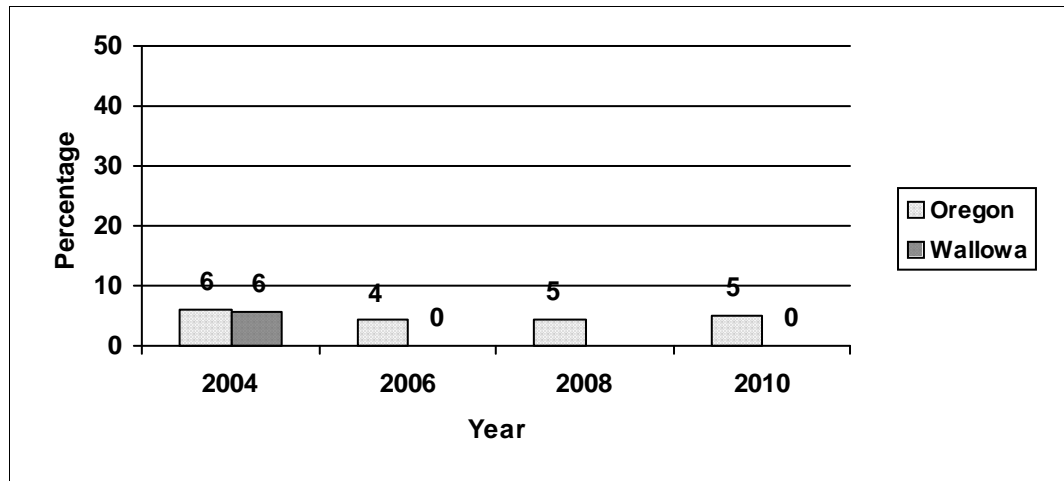
8th grade



Data Source: Oregon Healthy Teens Survey, and Oregon Student Wellness Survey

Percent of Youth Who Used Illicit Drug(s) Other Than Marijuana in the Past 30 Days

11th grade



Data Source: Oregon Healthy Teens Survey, and Oregon Student Wellness Survey

Measure 26

Inhalant use by youth

Why this measure is important

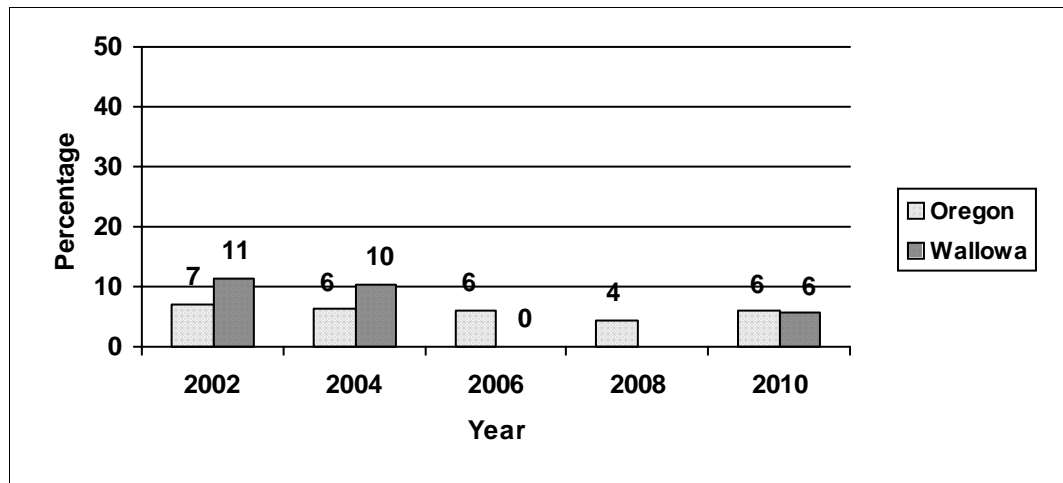
Long-term consequences of chronic exposure to inhalants has been associated with brain and other organ damage, neurocognitive impairment and compromised immune system response. Even single prolonged exposure by otherwise healthy individuals has been known to cause death as a result of cardiac arrhythmia, asphyxiation or suffocation.

Survey question(s)

During the past 30 days, how many times did you sniff glue, breathe the contents of aerosol spray cans or inhale any paints or sprays to get high?

Percent of Youth Who Used Inhalants in the Past 30 Days

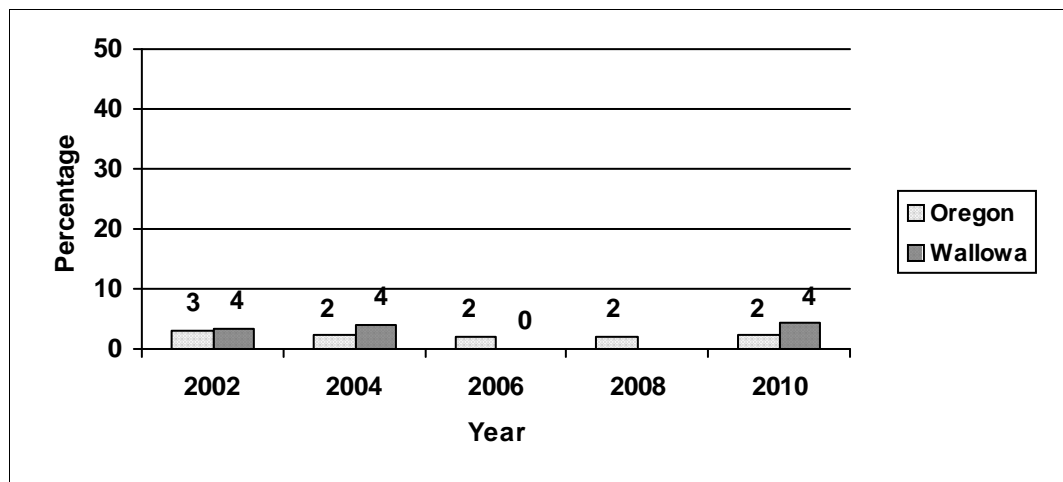
8th grade



Data Source: Oregon Healthy Teens Survey, and Oregon Student Wellness Survey

Percent of Youth Who Used Inhalants in the Past 30 Days

11th grade



Data Source: Oregon Healthy Teens Survey, and Oregon Student Wellness Survey

Measure 27

Prescription drug use in the past month

Why this measure is important

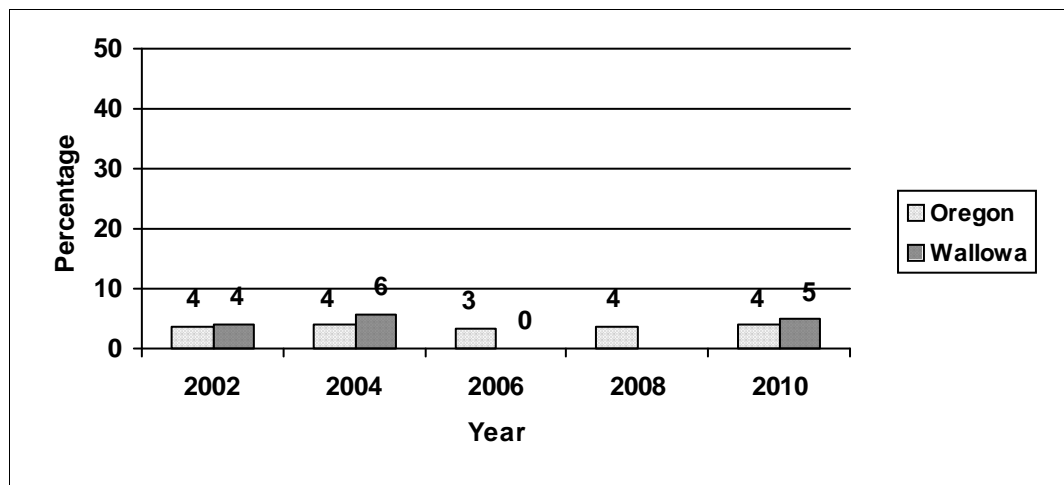
Adolescents are more likely than young adults to become dependent on prescription drugs. National studies and published reports indicate that the intentional abuse of prescription drugs to get high is a growing concern. Recent national findings show youth are turning away from street drugs and intentionally using prescription drugs such as pain relievers, tranquilizers, stimulants and sedatives to get high.

Survey question(s)

During the past 30 days, how many times did you use prescription drugs (without doctor's orders) to get high?

Percent of Youth Who Used Prescription Drugs to Get High in the Past 30 Days

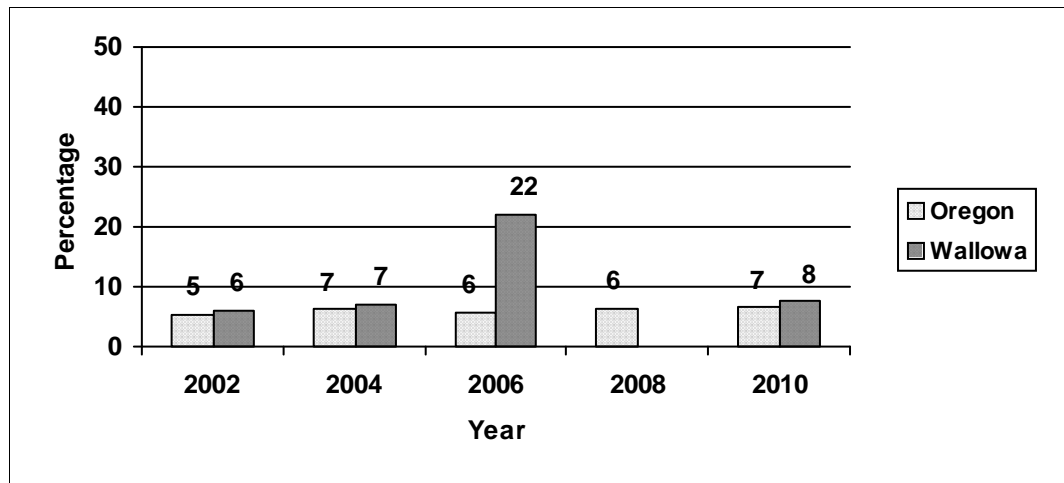
8th grade



Data Source: Oregon Healthy Teens Survey, and Oregon Student Wellness Survey

Percent of Youth Who Used Prescription Drugs to Get High in the Past 30 Days

11th grade



Data Source: Oregon Healthy Teens Survey, and Oregon Student Wellness Survey

Measure 28

Early initiation of marijuana use

Why this measure is important

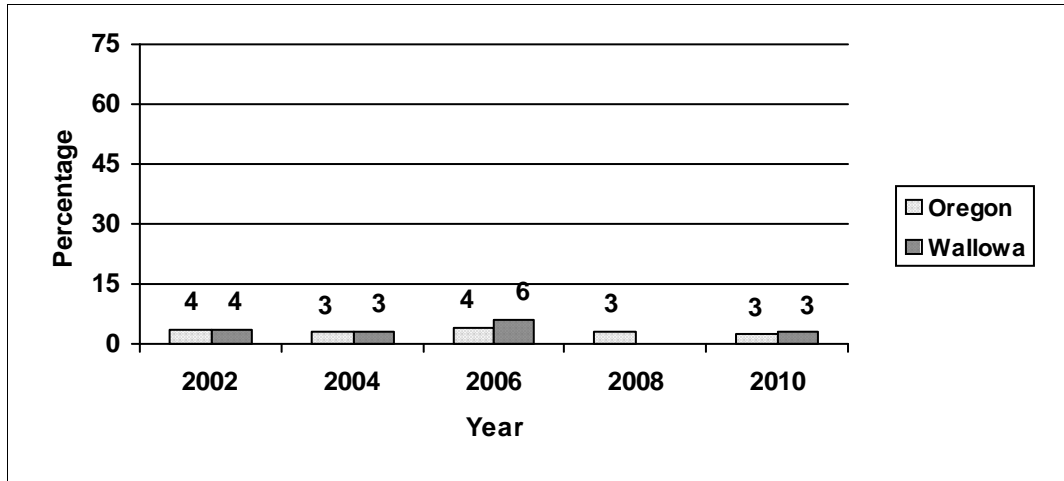
Youth who begin smoking marijuana at an early age are more likely to develop problematic levels of use in later adolescence and young adulthood. Youth who smoke marijuana are more likely to engage in multiple problem behaviors such as risky sexual behavior, alcohol, cigarette or other drug use than youth who do not smoke marijuana.

Survey question(s)

*How old were you when you tried marijuana for the first time?

Percent of Youth Who Report They Were Less Than 11 Years Old When They Tried Marijuana for the First Time

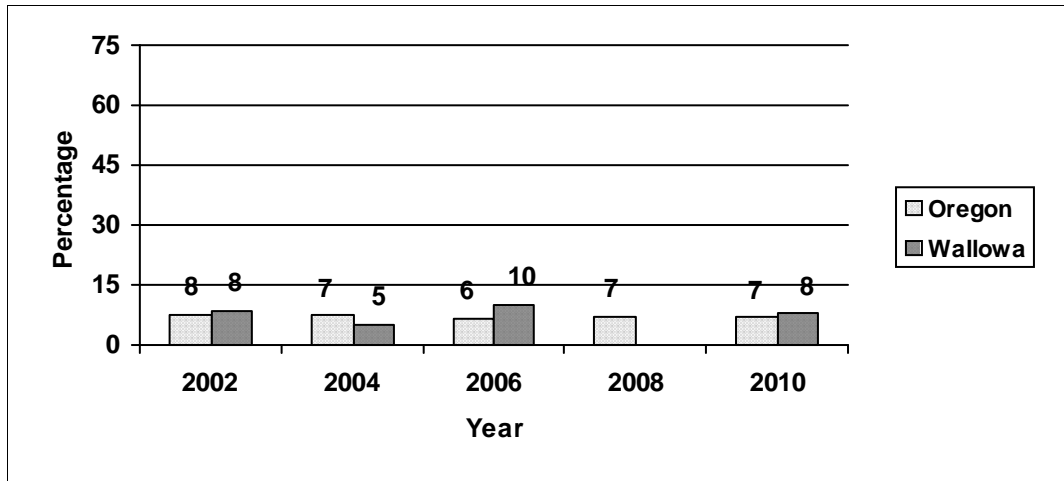
8th grade



Data Source: Oregon Healthy Teens Survey, and Oregon Student Wellness Survey

Percent of Youth Who Report They Were Less Than 13 Years Old When They Tried Marijuana for the First Time

11th grade



Data Source: Oregon Healthy Teens Survey, and Oregon Student Wellness Survey

* Prior to 2009, the survey question was "How old were you when you first tried marijuana or hashish"?

Measure 29

Average age of initial marijuana use

Why this measure is important

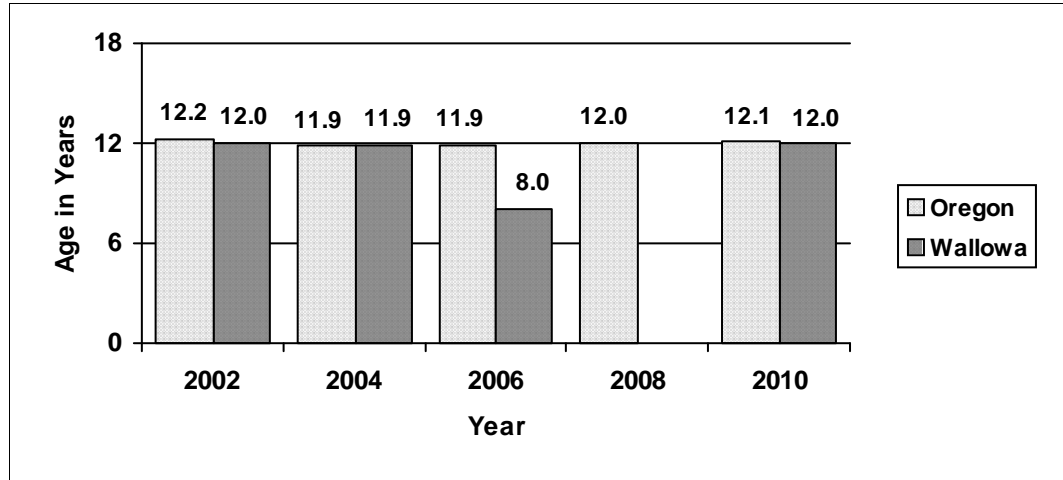
Findings from a recent prospective study indicate substance exposure before the age of 15 more than doubles the odds of adult substance dependence, early pregnancy and criminal convictions. These findings applied to all youth including those with no other conduct problems at the time they initiated use.

Survey question(s)

*How old were you when you tried marijuana for the first time?

Average Age of Initial Marijuana Use

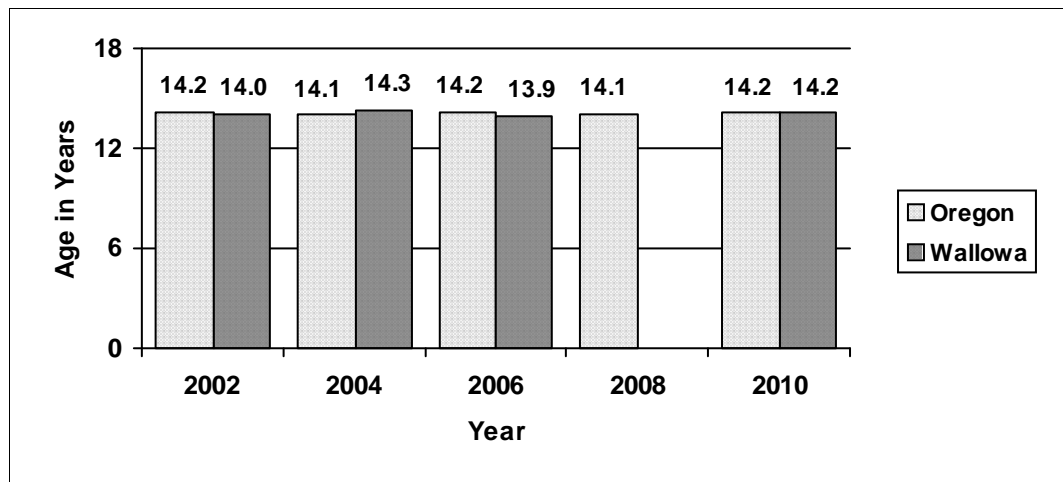
8th grade



Data Source: Oregon Healthy Teens Survey, and Oregon Student Wellness Survey

Average Age of Initial Marijuana Use

11th grade



Data Source: Oregon Healthy Teens Survey, and Oregon Student Wellness Survey

* Prior to 2009, the survey question was "How old were you when you first tried marijuana or hashish"?

Measure 30

Availability of marijuana

Why this measure is important

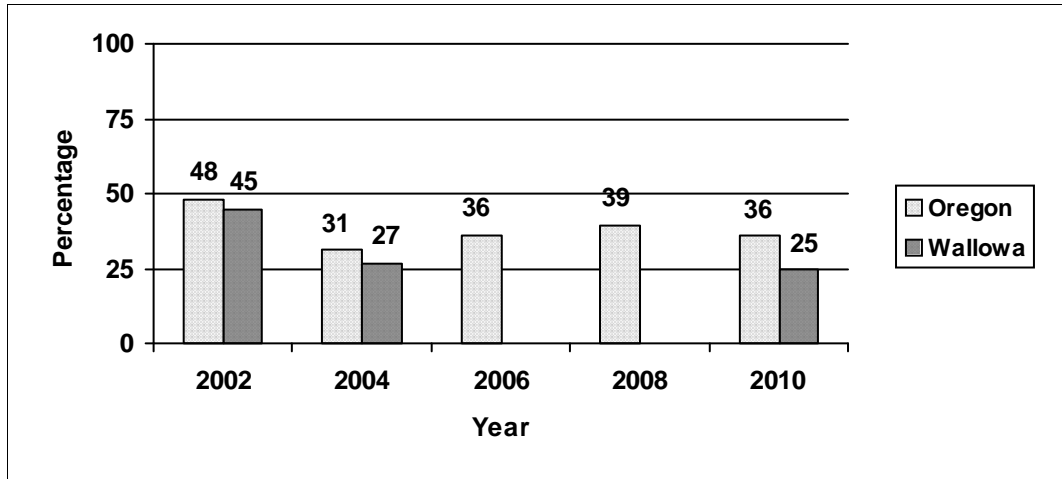
Easy access to marijuana is associated with increased risk of early use. In Oregon, youth who said it was "sort of easy" or "very easy" to get marijuana were significantly more likely to smoke marijuana in the past 30 days.

Survey question(s)

If you wanted to get some marijuana, how easy would it be for you to get some?

Percent of Youth Who Say It Would Be "Sort of Easy" or "Very Easy" to Get Marijuana

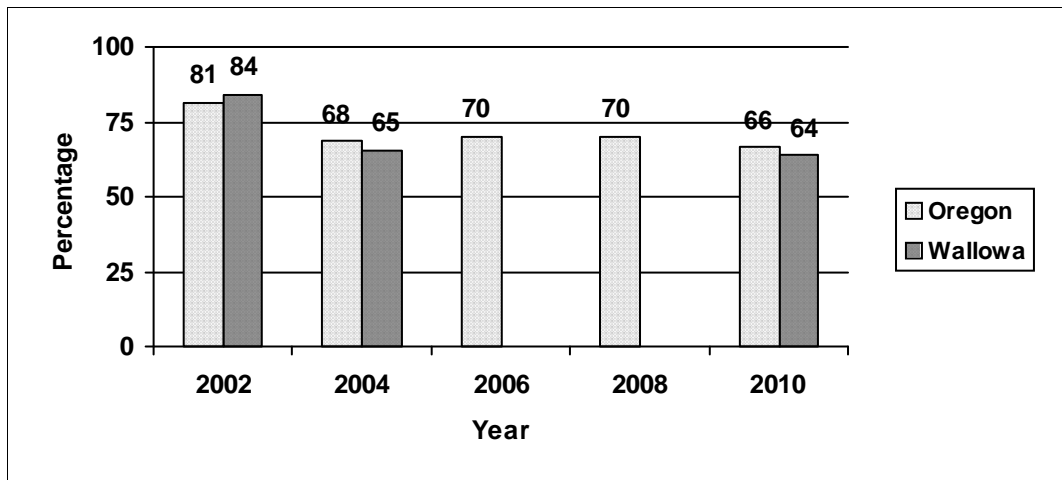
8th grade



Data Source: Oregon Healthy Teens Survey, and Oregon Student Wellness Survey

Percent of Youth Who Say It Would Be "Sort of Easy" or "Very Easy" to Get Marijuana

11th grade



Data Source: Oregon Healthy Teens Survey, and Oregon Student Wellness Survey

Measure 31

Availability of illicit drugs

Why this measure is important

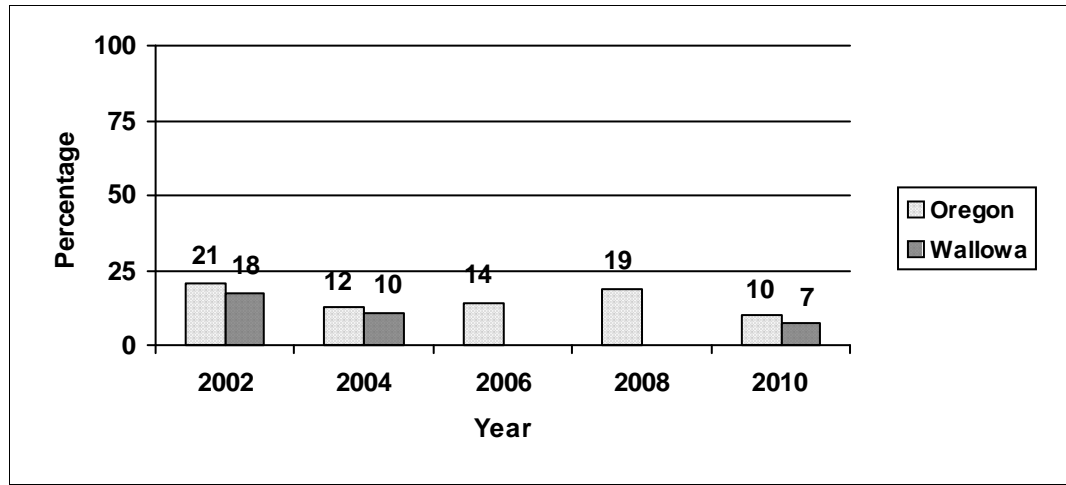
Easy access to drugs is associated with increased risk of early use. In Oregon, 8th graders who said it was "sort of easy" or "very easy" to get drugs were significantly more likely to report using drugs in the past 30 days.

Survey question(s)

If you wanted to get a drug like cocaine, LSD or amphetamine, how easy would it be for you to get some?

Percent of Youth Who Say It Would Be "Sort of Easy" or "Very Easy" to Get Illicit Drugs

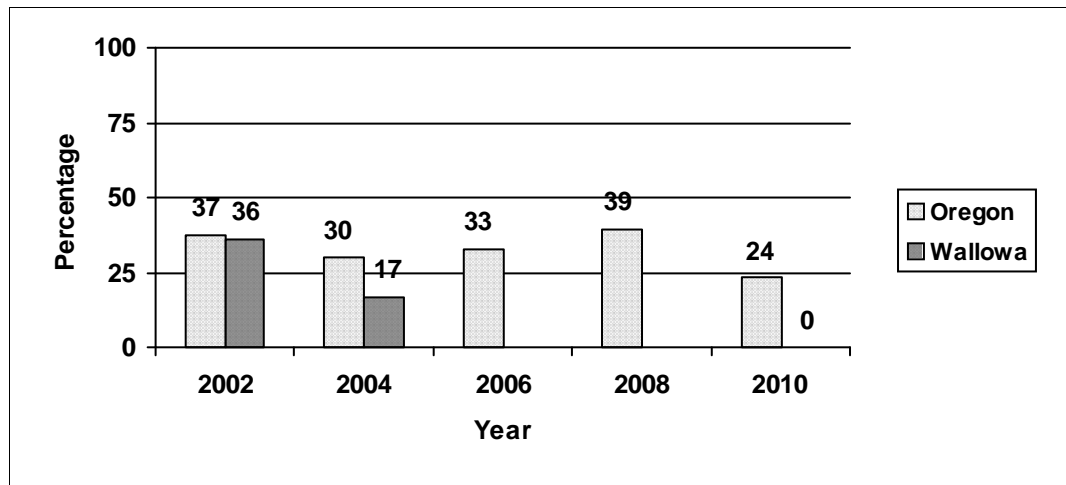
8th grade



Data Source: Oregon Healthy Teens Survey, and Oregon Student Wellness Survey

Percent of Youth Who Say It Would Be "Sort of Easy" or "Very Easy" to Get Illicit Drugs

11th grade



Data Source: Oregon Healthy Teens Survey, and Oregon Student Wellness Survey

Measure 32

Perceived risk of harm from regular marijuana use

Why this measure is important

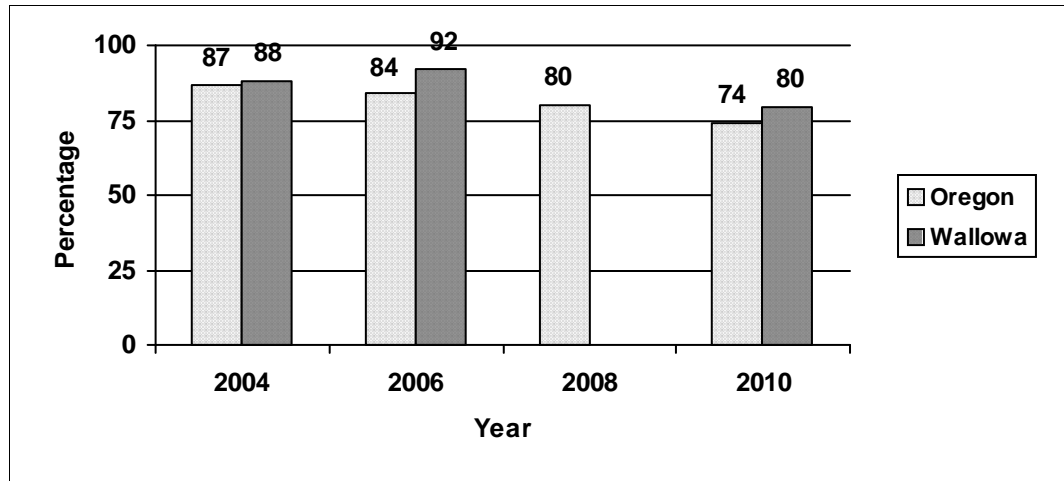
Perceived risk of harm from marijuana use is a deterrent to smoking, especially at early ages. Oregon 8th graders who thought there was "moderate" or "great risk" of harm from smoking marijuana regularly were significantly less likely to smoke than those who thought there was "slight" or "no risk" of harm.

Survey question(s)

*How much do you think people risk harming themselves (physically or in other ways) if they smoke marijuana once or twice a week?

Percent of Youth Who Believe There is "Moderate" or "Great" Risk of Harm from Smoking Marijuana Once or Twice a Week

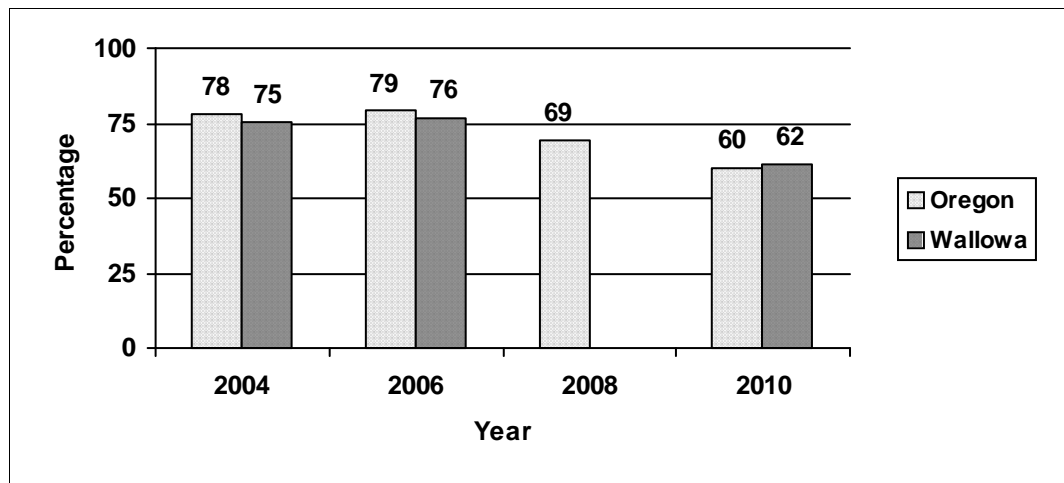
8th grade



Data Source: Oregon Healthy Teens Survey, and Oregon Student Wellness Survey

Percent of Youth Who Believe There is "Moderate" or "Great" Risk of Harm from Smoking Marijuana Once or Twice a Week

11th grade



Data Source: Oregon Healthy Teens Survey, and Oregon Student Wellness Survey

* Prior to 2009, the survey question was "How much do you think people risk harming themselves (physically or in other ways) if they smoke marijuana regularly?"

Measure 33

Perception of parent disapproval of marijuana use

Why this measure is important

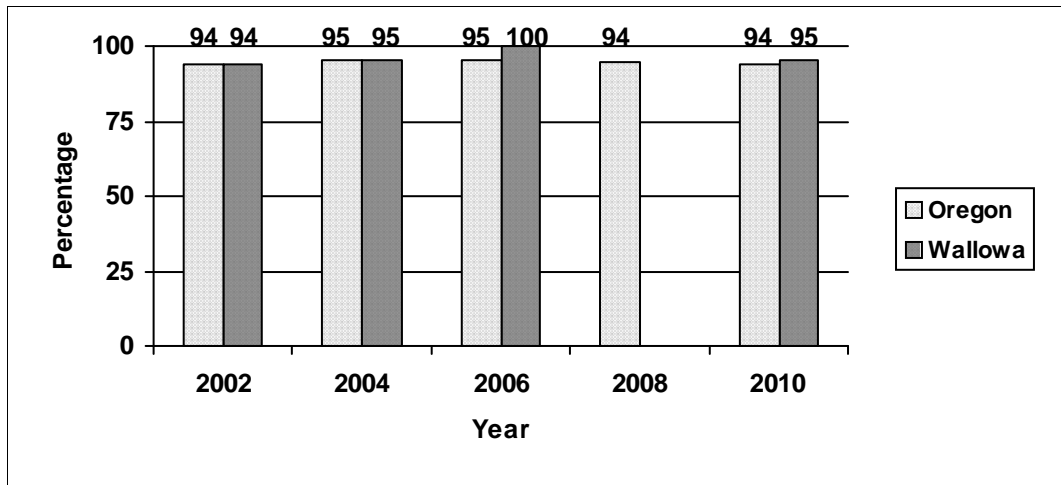
Parents can play an influential role in preventing marijuana use. Youth who know their parents disapprove of marijuana are less likely to smoke it, especially at an early age. Oregon 8th graders who believe their parents would think it is "wrong" or "very wrong" if they smoked marijuana were significantly less likely to smoke than youth who believe their parents would think it is "a little bit wrong" or "not wrong at all".

Survey question(s)

How wrong do your parents feel it would be for you to smoke marijuana?

Percent of Youth Who Say Their Parents Think It Is "Wrong" or "Very Wrong" for Youth to Smoke Marijuana

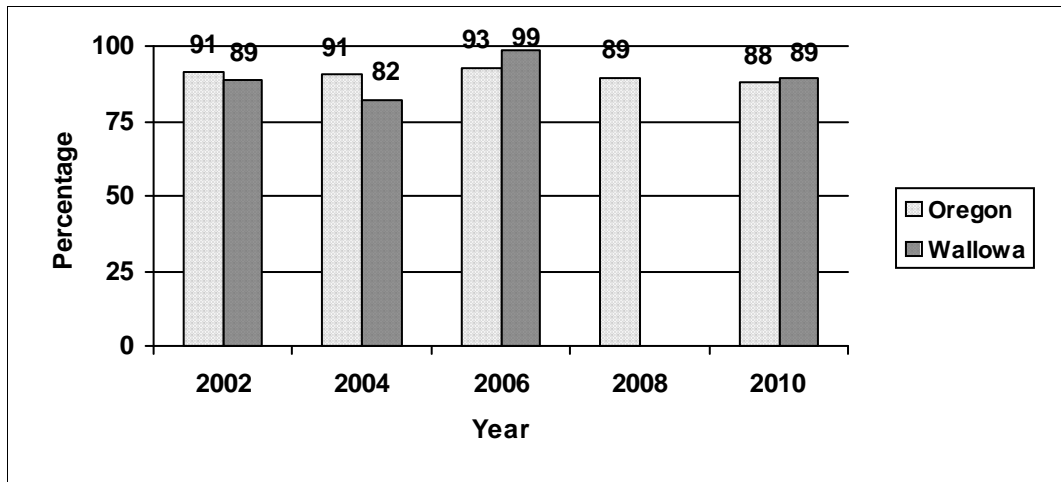
8th grade



Data Source: Oregon Healthy Teens Survey, and Oregon Student Wellness Survey

Percent of Youth Who Say Their Parents Think It Is "Wrong" or "Very Wrong" for Youth to Smoke Marijuana

11th grade



Data Source: Oregon Healthy Teens Survey, and Oregon Student Wellness Survey

Mental Health Measures

Measure 34 Suicide death rate

Measure 35 Attempted suicide by youth

Measure 36 Domestic disturbance offenses

Measure 37 Major depressive episode among adults

Measure 38 Serious psychological distress among adults

Measure 39 Youth depression

Measure 40 Psychological distress among youth

Measure 41 Social and personal development

Mental Health Mortality

Measure 34 Suicide death rate

Why this measure is important

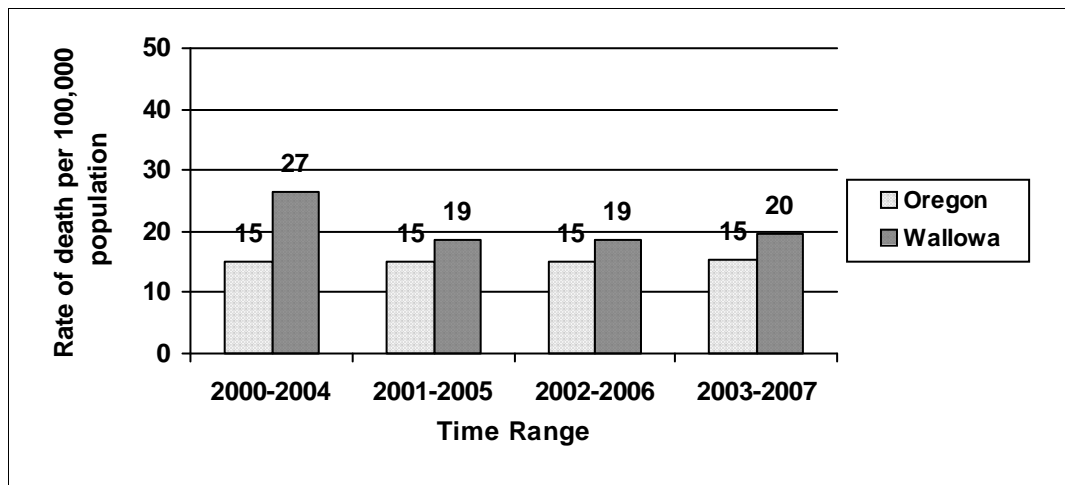
Suicide occurs most frequently as a consequence of depression or other mental disorders. Abuse of alcohol or other drugs is more likely to increase emotional problems than to provide an escape from them. The Healthy People 2010 objective is to reduce the suicide rate to 5.0 suicides per 100,000 population.

Measure Description

Rate of deaths from suicide per 100,000 population, age-adjusted (ICD-10 codes X60-X84, Y87.0)

Rate of Suicide Deaths per 100,000 Population, Age-Adjusted

All Ages



Data Source: Death Certificate Data

Mental Health Morbidity

Measure 35

Attempted suicide by youth

Why this measure is important

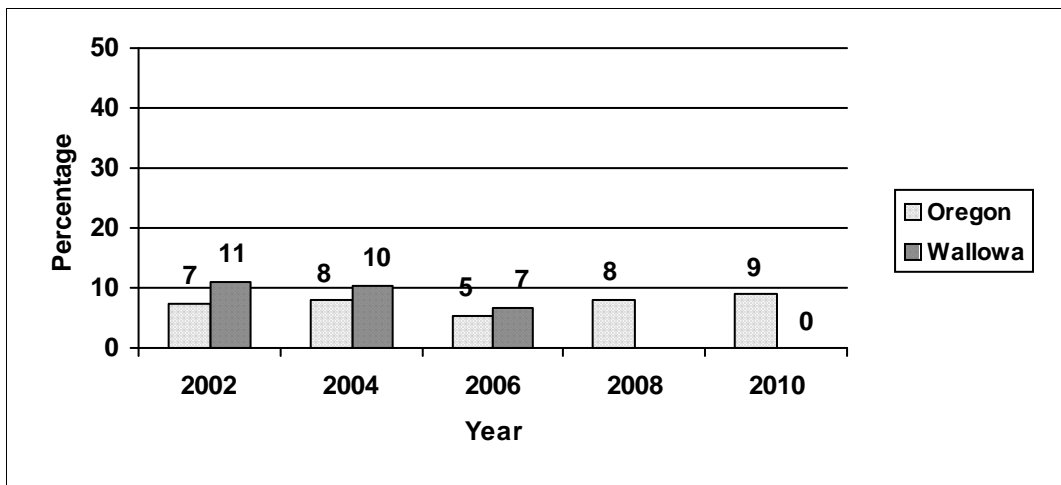
There is good evidence that over 90 percent of adolescents who commit suicide have a mental disorder before their death. The most common disorders that predispose youth to suicide are some form of mood disorder, such as depression with or without alcoholism or other substance abuse problem, and/or certain forms of anxiety disorder.

Survey question(s)

During the past 12 months, how many times did you actually attempt suicide?

Percent of Youth Who Attempted Suicide in the Past Year

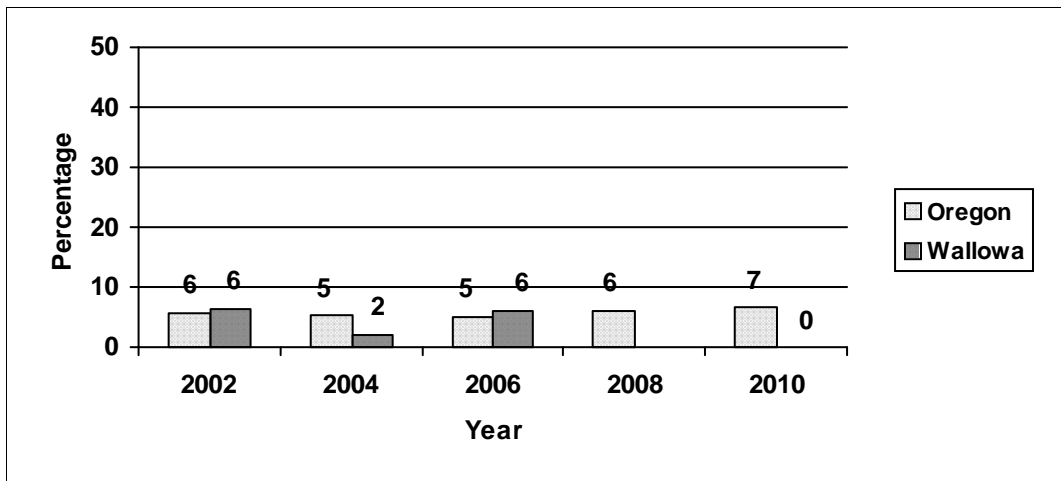
8th grade



Data Source: Oregon Healthy Teens Survey, and Oregon Student Wellness Survey

Percent of Youth Who Attempted Suicide in the Past Year

11th grade



Data Source: Oregon Healthy Teens Survey, and Oregon Student Wellness Survey

Mental Health Crime and Criminal Justice

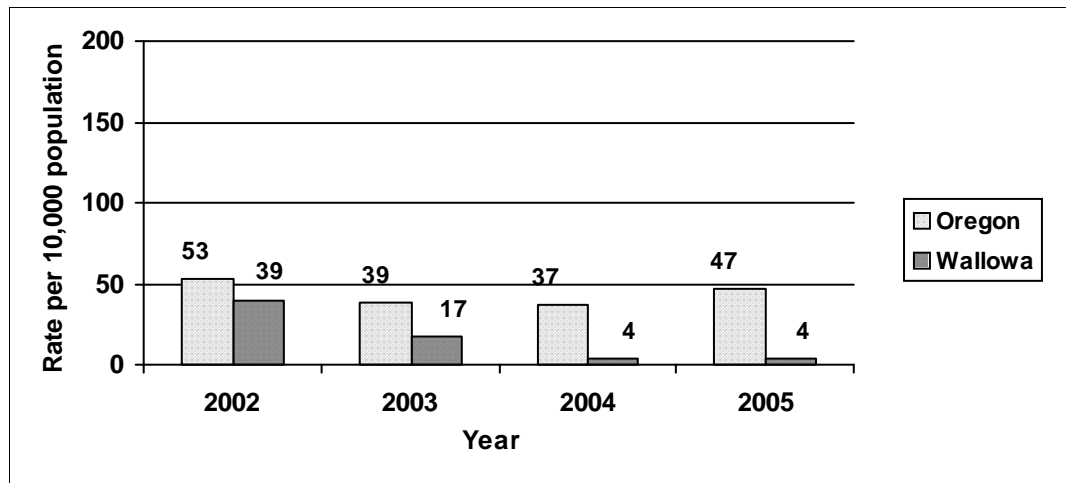
Measure 36 Domestic disturbance offenses

Why this measure is important *Being the victim of violence is a risk factor for the onset of mental health problems among persons of all ages. Severe marital discord and substance abuse contribute to an increased likelihood of domestic disturbance.*

Measure description Rate of domestic disturbance offenses per 10,000 population such as assault, disorderly conduct, criminal threat and restraining order violation. Please note: reporting of domestic disturbance offenses can be inconsistent. The endnotes in Appendix D provide additional information that may be useful.

Rate of Domestic Disturbance Offenses per 10,000 Population

All ages



Data Source: Uniform Crime Reports

Mental Health Past 30 Days

Measure 37

Major depressive episode among adults

Why this measure is important

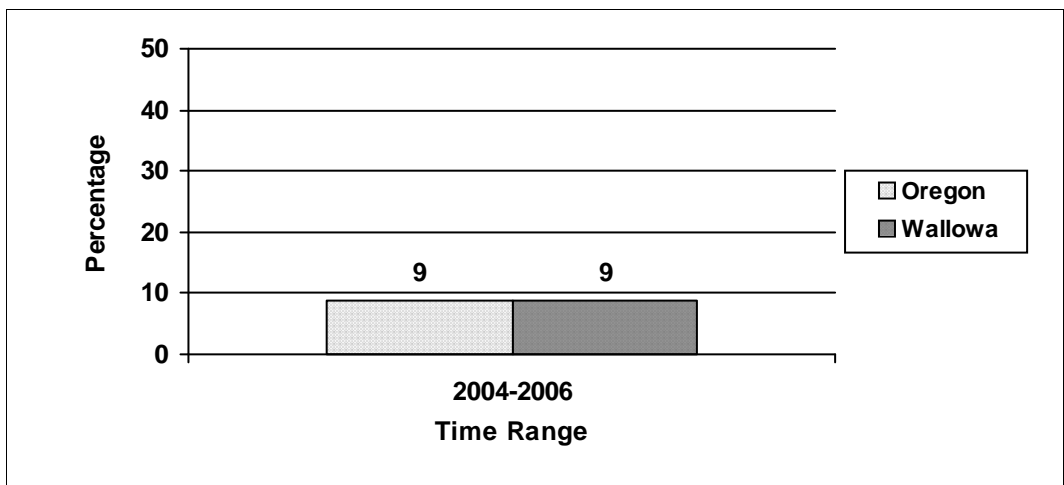
Suicide is the most tragic consequence of major depressive disorders. Experiencing a major depressive episode in the past year is associated with higher rates of heavy drinking, cigarette use and illicit drug use.

Measure Description

Major depressive episode (MDE) is defined as a period of at least two weeks when a person experienced a depressed mood or loss of interest or pleasure in daily activities and had at least four of the seven additional symptoms reflecting the criteria for major depressive disorder as described in the 4th edition of the Diagnostic and Statistical Manual of Mental Disorders (DSM-IV)

Percent of Persons Who Had a Major Depressive Episode in the Past Year

Adults, 18 or older



Data Source: National Survey on Drug Use and Health

Mental Health Past 30 Days

Measure 38

Serious psychological distress among adults

Why this measure is important

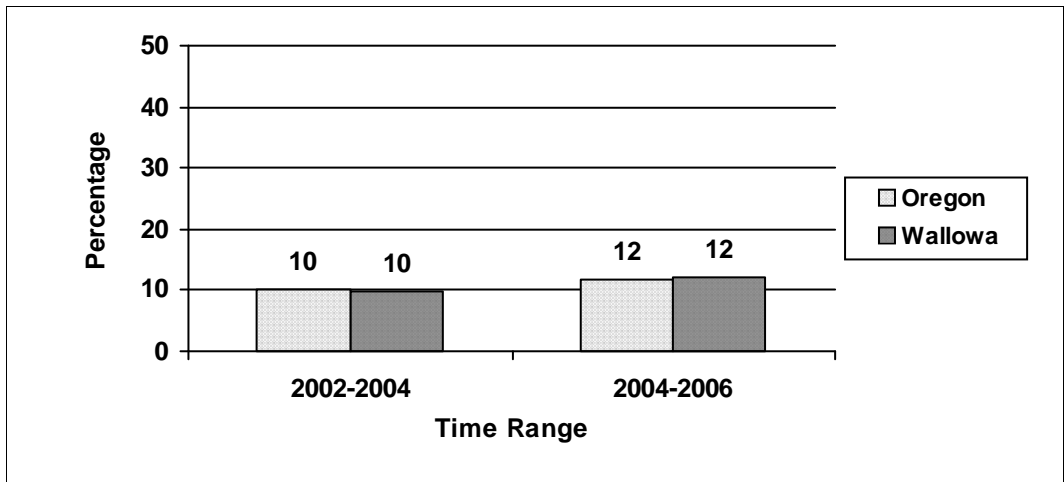
Meeting the criteria for serious psychological distress (SPD) indicates that the respondent reports symptoms at a level known to be indicative of having a mental disorder (i.e., any disorder such as an anxiety or mood disorder). SPD in the past year is associated with higher rates of binge drinking, heavy drinking, cigarette use and illicit drug use.

Measure Description

Persons identified with past-year serious mental illness based on the K6 scale measures of nonspecific distress

Percent of Persons With Serious Psychological Distress in the Past Year

Adults, 18 or older



Data Source: National Survey on Drug Use and Health

Mental Health Youth

Measure 39

Youth depression

Why this measure is important

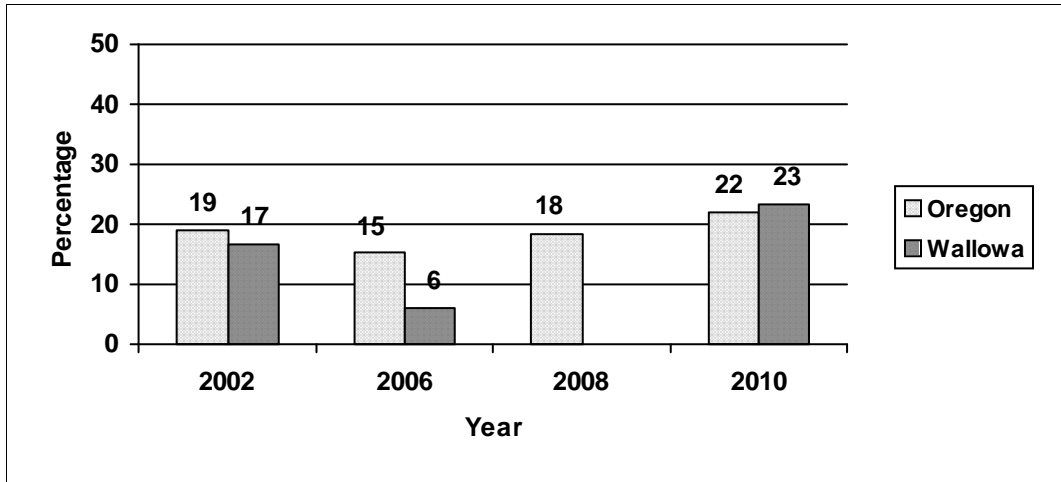
High depression scores are associated with low academic achievement, high scholastic anxiety and poor peer and teacher relationships. Roughly two-thirds of adolescents with major depressive disorder also have another mental disorder.

Survey question(s)

*During the past 12 months did you ever feel so sad or hopeless almost every day for two weeks or more in a row that you stopped doing some usual activities?

Percent of Youth Who Had a Depressive Episode in the Past Year

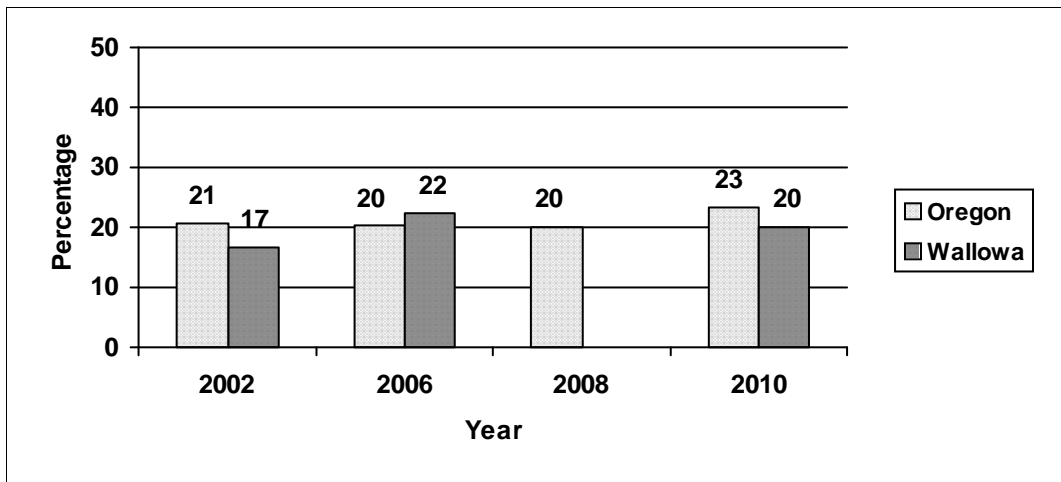
8th grade



Data Source: Oregon Healthy Teens Survey, and Oregon Student Wellness Survey

Percent of Youth Who Had a Depressive Episode in the Past Year

11th grade



Data Source: Oregon Healthy Teens Survey, and Oregon Student Wellness Survey

*Prior to 2009 the question was "During the past 12 months did you ever feel so sad or hopeless every day for two weeks or more in a row that you stopped doing some usual activities"?

Mental Health Youth

Measure 40

Psychological distress among youth

Why this measure is important

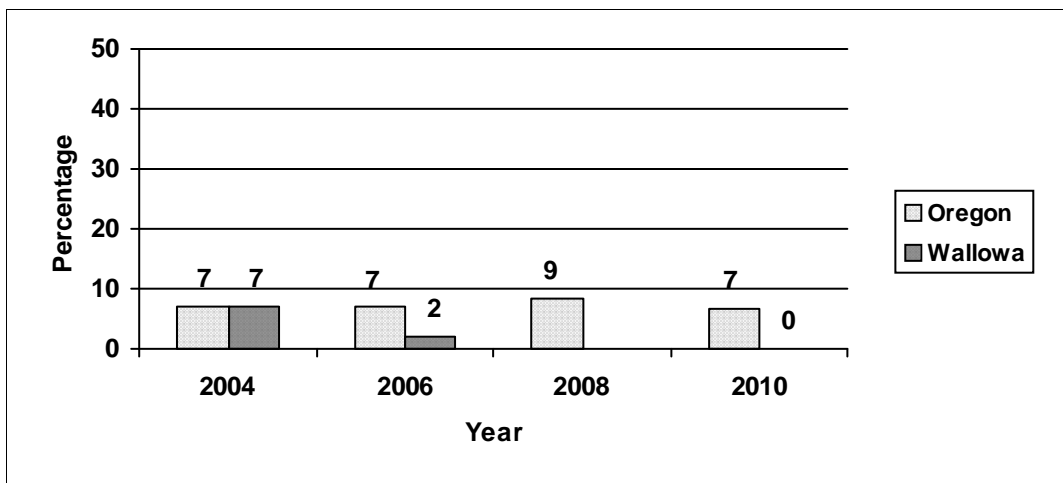
The Mental Health Inventory (MHI-5) is a 5-item questionnaire that explores the presence of psychological distress that may be manifested in individuals with a variety of mental health disorders. The MHI-5 are included on Oregon's youth surveys and provide an indication of youth who may be experiencing a mental health concern that requires further assessment.

Survey question(s)

During the past 30 days, how much of the time have you: Been a very nervous person? Felt calm and peaceful? Felt downhearted and blue? Been a happy person? Felt so down in the dumps that nothing could cheer you up?

Percent of Youth that Exhibit Psychological Distress Based on Mental Health Inventory-5 (MHI-5)

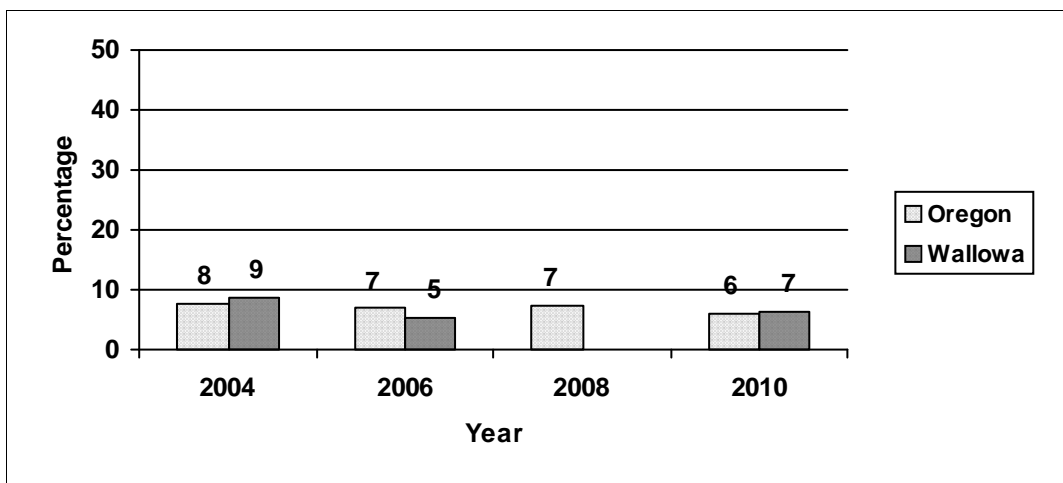
8th grade



Data Source: Oregon Healthy Teens Survey, and Oregon Student Wellness Survey

Percent of Youth that Exhibit Psychological Distress Based on Mental Health Inventory-5 (MHI-5)

11th grade



Data Source: Oregon Healthy Teens Survey, and Oregon Student Wellness Survey

Mental Health School Success

Measure 41

Social and personal development

Why this measure is important

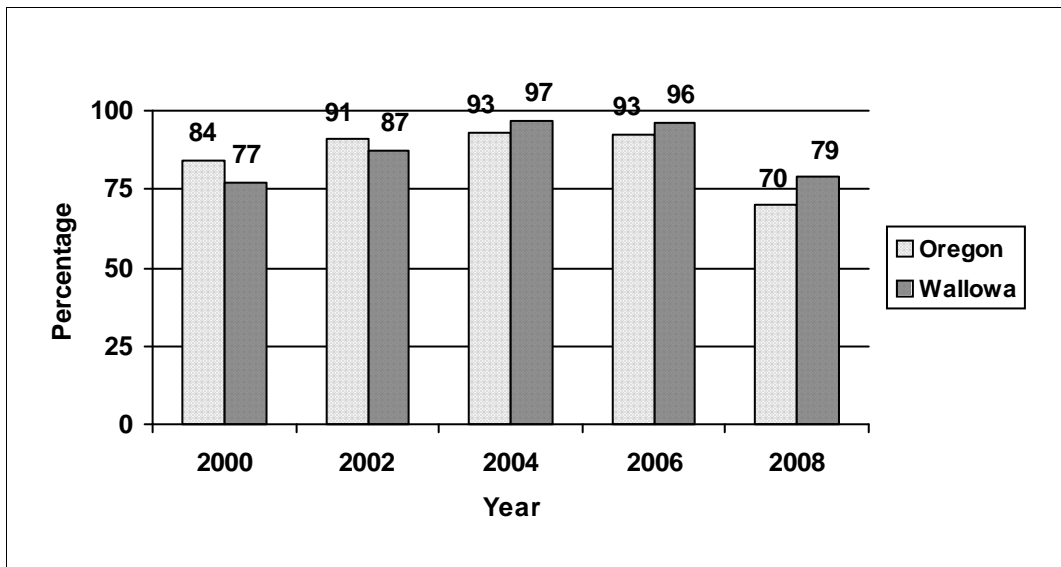
Being aware of the skills and knowledge children have as they enter school enables teachers and parents to help each child move forward on his/her educational journey. Adequate social and personal development is one of five domains that help ensure success in kindergarten.

Measure description

*Child accepts guidance and directions from familiar adults, plays and works with other children; reacts appropriately to a variety of situations; modifies behavior when asked; and follows simple rules and routines.

Percent of Kindergarteners With Adequate Social and Personal Development

Kindergarten



Data Source: Oregon Department of Education Annual Report

*In 2008 this measure was redefined. Results may not be comparable to previous years.

Appendices

Appendix A	List of measures by subject
Appendix B	List of measures by data source
Appendix C	Bibliography of data sources
Appendix D	County data endnotes <ul style="list-style-type: none">• Behavioral Risk Factor Surveillance System• Death Certificate Data• Fatality Analysis Reporting System• National Survey on Drug Use and Health• Oregon Department of Education Annual Report• Oregon Healthy Teens & Student Wellness Surveys• Uniform Crime Reports

Appendix A: List of measures by subject

Alcohol

- Measure 1 Rate of death from motor vehicle crashes
- Measure 2 Percent of motor vehicle fatalities that involve alcohol
- Measure 3 Rate of death from alcohol-induced disease
- Measure 4 Alcohol abuse or dependence
- Measure 5 Crimes against persons
- Measure 6 Current alcohol use by adults
- Measure 7 Current binge drinking by adults
- Measure 8 Current heavy use of alcohol by adults
- Measure 9 Current alcohol use by youth
- Measure 10 Current binge drinking by youth
- Measure 11 Drinking and driving among youth
- Measure 12 Current gambling by youth
- Measure 13 Early initiation of alcohol use
- Measure 14 Average age of initial alcohol use
- Measure 15 Availability of alcohol
- Measure 16 Perceived risk of harm from alcohol use
- Measure 17 Perception of parent disapproval of alcohol use

Drugs

- Measure 18 Rate of drug-induced deaths
- Measure 19 Drug abuse or dependence
- Measure 20 Property crimes
- Measure 21 Current marijuana or hashish use
- Measure 22 Current illicit drug use other than marijuana
- Measure 23 Non-medical use of pain relievers in the past year
- Measure 24 Current marijuana use by youth
- Measure 25 Past month illicit drug use, other than marijuana
- Measure 26 Inhalant use by youth
- Measure 27 Prescription drug use in the past month
- Measure 28 Early initiation of marijuana use
- Measure 29 Average age of initial marijuana use
- Measure 30 Availability of marijuana
- Measure 31 Availability of illicit drugs
- Measure 32 Perceived risk of harm from regular marijuana use

Appendix A: List of measures by subject

Measure 33 Perception of parent disapproval of marijuana use

Mental Health

Measure 34 Suicide death rate

Measure 35 Attempted suicide by youth

Measure 36 Domestic disturbance offenses

Measure 37 Major depressive episode among adults

Measure 38 Serious psychological distress among adults

Measure 39 Youth depression

Measure 40 Psychological distress among youth

Measure 41 Social and personal development

Appendix B: List of measures by data source

Behavioral Risk Factor Surveillance System

- Measure 6 Current alcohol use by adults
- Measure 7 Current binge drinking by adults
- Measure 8 Current heavy use of alcohol by adults

Death Certificate Data

- Measure 1 Rate of death from motor vehicle crashes
- Measure 3 Rate of death from alcohol-induced disease
- Measure 18 Rate of drug-induced deaths
- Measure 34 Suicide death rate

Fatality Analysis Reporting System

- Measure 2 Percent of motor vehicle fatalities that involve alcohol

National Survey on Drug Use and Health

- Measure 4 Alcohol abuse or dependence
- Measure 19 Drug abuse or dependence
- Measure 21 Current marijuana or hashish use
- Measure 22 Current illicit drug use other than marijuana
- Measure 23 Non-medical use of pain relievers in the past year
- Measure 37 Major depressive episode among adults
- Measure 38 Serious psychological distress among adults

Oregon Department of Education Annual Report

- Measure 41 Social and personal development

Oregon Healthy Teens Survey and Oregon Student Wellness Survey

- Measure 9 Current alcohol use by youth
- Measure 10 Current binge drinking by youth
- Measure 11 Drinking and driving among youth
- Measure 12 Current gambling by youth
- Measure 13 Early initiation of alcohol use
- Measure 14 Average age of initial alcohol use
- Measure 15 Availability of alcohol
- Measure 16 Perceived risk of harm from alcohol use
- Measure 17 Perception of parent disapproval of alcohol use
- Measure 24 Current marijuana use by youth
- Measure 25 Past month illicit drug use, other than marijuana

Appendix B: List of measures by data source

Oregon Healthy Teens Survey and Oregon Student Wellness Survey

- Measure 26 Inhalant use by youth
- Measure 27 Prescription drug use in the past month
- Measure 28 Early initiation of marijuana use
- Measure 29 Average age of initial marijuana use
- Measure 30 Availability of marijuana
- Measure 31 Availability of illicit drugs
- Measure 32 Perceived risk of harm from regular marijuana use
- Measure 33 Perception of parent disapproval of marijuana use
- Measure 35 Attempted suicide by youth
- Measure 39 Youth depression
- Measure 40 Psychological distress among youth

Uniform Crime Reports

- Measure 5 Crimes against persons
- Measure 20 Property crimes
- Measure 36 Domestic disturbance offenses

Appendix C: Bibliography of data sources

Behavioral Risk Factor Surveillance System

Citation: Oregon Health Authority, Public Health Division, Office of Disease Prevention and Epidemiology, Center for Health Statistics. Behavioral Risk Factor Surveillance System Survey Data, 2002-2005, and 2004-2007 County Results. Portland, Oregon, 2008.

Online location <http://www.dhs.state.or.us/dhs/ph/chs/brfs/brfsdata.shtml>

Death Certificate Data

Citation: Death Certificate Data: Oregon Health Authority, Center for Health Statistics.

Online location Not online. See Oregon Vital Statistics Annual Report, Vol. 2 or the County Data Book.

Fatality Analysis Reporting System

Citation: Oregon Department of Transportation, Transportation Safety Division. DUII Data Book for Oregon Counties, 1997-2007. Salem, Oregon, 2009.

Online location http://www.oregon.gov/ODOT/TS/docs/DUII/2007_DUII_Statistics.pdf

Monitoring the Future

Citation: Monitoring the Future national survey results on drug use, Volume I, Secondary school students (NIH Publication No. 08-6418A) Bethesda, MD: National Institute on Drug Abuse 1975-2010.

Online location <http://monitoringthefuture.org/>

National Survey on Drug Use and Health

Citation: Substance Abuse and Mental Health Services Administration, Office of Applied Studies. Substate estimates from the 2002-2004, 2004-2006 and 2006-2008, National Surveys on Drug Use and Health. Rockville, MD, 2008.

Online location <http://www.oas.samhsa.gov/substate2K8/htm>.

Oregon Department of Education Annual Report

Citation: Oregon Department of Education. Oregon Kindergarten Readiness Survey Report, Readiness to Learn, 2000, 2002, 2004, 2006, 2008.

Online location <http://www.ode.state.or.us/search/page/?id=1356>

Oregon Healthy Teens Survey

Citation: Oregon Health Authority, Public Health Division, Office of Disease Prevention and Epidemiology, Center for Health Statistics. Results from Oregon Healthy Teens Survey. Portland, Oregon, 2001-2009.

Online location <http://www.dhs.state.or.us/dhs/ph/chs/youthsurvey/index.shtml>

Appendix C: Bibliography of data sources

Oregon Student Wellness Survey

Citation: Oregon Health Authority, Addictions and Mental Health Division, Program and Policy Development. Results from Oregon Student Wellness Survey. Salem, Oregon, 2010.

Online location <http://www.oregon.gov/DHS/addiction/student-wellness/index.shtml>

Oregon Vital Statistics County Data Book

Citation: Death Certificate Data: Oregon Health Authority, Center for Health Statistics, 2000 to 2008. County population: Portland State University (PSU) Population Research Center, 2000 to 2008.

Online location <http://www.dhs.state.or.us/dhs/ph/chs/data/cdb.shtml>

Uniform Crime Reports

Citation: Oregon State Police, Criminal Justice Information Services. Oregon Annual Uniform Crime Reports. Salem, Oregon, 2000-2007.

Online location http://www.oregon.gov/OSP/CJIS/annual_reports.shtml

Youth Risk Behavior Survey

Citation: Centers for Disease Control and Prevention, Youth Risk Behavior Surveillance — United States, 2009.

Online location <http://www.cdc.gov/HealthyYouth/YRBS/index.htm>

Appendix D: Data Endnotes for Wallowa County

Behavioral Risk Factor Surveillance System

The Behavioral Risk Factor Surveillance System (BRFSS) is a collaborative project of the Centers for Disease Control and Prevention, and U.S. states and territories. The BRFSS is an on-going data collection program designed to measure behavioral risk factors in the adult population 18 years of age or older living in households. The objective of the BRFSS is to collect uniform, state-specific data on preventive health practices and risk behaviors that are linked to chronic diseases, injuries, and preventable infectious diseases in the adult population.

County results were determined using data from the 2002-2005 and 2004-2007 Oregon BRFSS. The rates have been age-adjusted. Age-adjusted rates allow comparison of one county to another without worrying about whether differences in the rates are due to one population being, on average, older or younger than the other one.

The endnotes that follow provide results by gender including the upper and lower limits for the 95 percent confidence interval. Confidence intervals are provided so the reader can determine whether or not a difference between the results is statistically significant. If the county rate is statistically significantly higher or lower than the state, it is noted. When results were based on less than 50 respondents total or less than 12 in any one of the three age groups, they may not accurately reflect behavior of the entire county and it is so noted.

Percent of Adults Who Report Any Use of Alcohol in the Past 30 Days

Report Period	Age	Gender	Percentage	Lower Limit	Upper Limit	Notes
2002-2005	18 or older	Female	43.1	27.6	60.1	Due to small sample sizes, results may not accurately reflect behavior of the entire county
2004-2007	18 or older	Female	57.0	37.7	74.4	
2002-2005	18 or older	Male	61.8	42.4	78.0	Due to small sample sizes, results may not accurately reflect behavior of the entire county
2004-2007	18 or older	Male	67.6	46.0	83.6	

Percent of Adults Who Report Binge Drinking in the Past 30 Days

Report Period	Age	Gender	Percentage	Lower Limit	Upper Limit	Notes
2002-2005	18 or older	Female	7.4	1.8	25.2	Due to small sample sizes, results may not accurately reflect behavior of the entire county

Appendix D: Data Endnotes for Wallowa County

Percent of Adults Who Report Binge Drinking in the Past 30 Days

Report Period	Age	Gender	Percentage	Lower Limit	Upper Limit	Notes
2004-2007	18 or older	Female	16.6	5.8	39.2	Due to small sample sizes, results may not accurately reflect behavior of the entire county
2002-2005	18 or older	Male	34.2	18.1	54.9	Due to small sample sizes, results may not accurately reflect behavior of the entire county
2004-2007	18 or older	Male	27.0	13.4	46.8	Due to small sample sizes, results may not accurately reflect behavior of the entire county

Percent of Adults Who Were Heavy Drinkers in the Past 30 Days

Report Period	Age	Gender	Percentage	Lower Limit	Upper Limit	Notes
2002-2005	18 or older	Female	5.6	1.6	17.8	Due to small sample sizes, results may not accurately reflect behavior of the entire county
2004-2007	18 or older	Female	8.2	2.9	21.3	
2002-2005	18 or older	Male	16.0	5.9	36.7	Due to small sample sizes, results may not accurately reflect behavior of the entire county
2004-2007	18 or older	Male	1.4	0.2	10.1	

Appendix D: Data Endnotes for Wallowa County

Death Certificate Data

The Center for Health Statistics (CHS) is responsible for registering, certifying, amending, and issuing Oregon vital records (births, marriages, divorces, and deaths). CHS is also responsible for compiling and analyzing the data from vital records. Cause of death is classified using the International Classification of Disease, Tenth Revision (ICD-10). ICD-10 incorporates rules for selecting the underlying cause of death, and classification of the leading causes of death.

Death data are reported by county of residence. Deaths of Oregon residents that occur outside of the state are included in the data. The Center for Health Statistics actually registers only those vital events occurring in Oregon. However, a formal interstate exchange agreement governs the mutual exchange of information on births and deaths between states and other countries so that events occurring to Oregon residents elsewhere are also reported to this state.

Mortality data in this report were analyzed using VistaPhw. If a county had fewer than 6 deaths in the 5-year period, the mortality rate for the DHS Service Delivery Area is provided and it is noted below. The endnotes that follow provide the 5-year information including the total deaths, age-adjusted rate of death per 100,000 population, and the upper and lower limits for the 95 percent confidence interval. Age-adjustment is used to control for differences in estimates that are due purely to populations having different age distributions. Previous publications reported unadjusted data and should not be compared to the data presented in this report. Confidence intervals are provided so the reader can determine whether or not a difference between results is statistically significantly higher or lower than the state, it is noted.

Rate of Death from Motor Vehicle Crashes per 100,000 Population, Age-Adjusted

Report Period	Age	Gender	Rate	Lower Limit	Upper Limit	Notes
2000-2004	All ages	Both	17.5	12.6	24.0	Total deaths for 5-year period = 43. Due to a small number of deaths in the county, the rate of death is based on combined mortality from Baker, Union and Wallowa counties.
2001-2005	All ages	Both	19.4	14.2	26.1	Total deaths for 5-year period = 49. Due to a small number of deaths in the county, the rate of death is based on combined mortality from Baker, Union and Wallowa counties.
2002-2006	All ages	Both	19.0	13.7	25.8	Total deaths for 5-year period = 46. Due to a small number of deaths in the county, the rate of death is based on combined mortality from Baker, Union and Wallowa counties.

Appendix D: Data Endnotes for Wallowa County

Rate of Death from Motor Vehicle Crashes per 100,000 Population, Age-Adjusted

Report Period	Age	Gender	Rate	Lower Limit	Upper Limit	Notes
2003-2007	All ages	Both	15.9	11.1	22.3	Total deaths for 5-year period = 38. Due to a small number of deaths in the county, the rate of death is based on combined mortality from Baker, Union and Wallowa counties.

Rate of Death From Alcohol-Induced Disease per 100,000 Population, Age-Adjusted

Report Period	Age	Gender	Rate	Lower Limit	Upper Limit	Notes
2000-2004	All ages	Both	11.1	7.5	16.0	Total deaths for 5-year period = 32. Due to a small number of deaths in the county, the rate of death is based on combined mortality from Baker, Union and Wallowa counties.
2001-2005	All ages	Both	13.2	4.5	35.9	Total deaths for 5-year period = 6.
2002-2006	All ages	Both	14.6	5.6	37.3	Total deaths for 5-year period = 7.
2003-2007	All ages	Both	14.3	5.6	36.8	Total deaths for 5-year period = 7.

Rate of Death from Drug-Induced Causes, Age-Adjusted

Report Period	Age	Gender	Rate	Lower Limit	Upper Limit	Notes
2000-2004	All ages	Both	6.9	4.0	11.6	Total deaths for 5-year period = 17. Due to a small number of deaths in the county, the rate of death is based on combined mortality from Baker, Union and Wallowa counties.
2001-2005	All ages	Both	7.8	4.6	12.6	Total deaths for 5-year period = 19. Due to a small number of deaths in the county, the rate of death is based on combined mortality from Baker, Union and Wallowa counties.
2002-2006	All ages	Both	8.5	5.1	13.5	Total deaths for 5-year period = 21. Due to a small number of deaths in the county, the rate of death is based on combined mortality from Baker, Union and Wallowa counties.

Appendix D: Data Endnotes for Wallowa County

Rate of Death from Drug-Induced Causes, Age-Adjusted

Report Period	Age	Gender	Rate	Lower Limit	Upper Limit	Notes
2003-2007	All ages	Both	10.8	6.9	16.3	Total deaths for 5-year period = 26. Due to a small number of deaths in the county, the rate of death is based on combined mortality from Baker, Union and Wallowa counties.

Rate of Suicide Deaths per 100,000 Population, Age-Adjusted

Report Period	Age	Gender	Rate	Lower Limit	Upper Limit	Notes
2000-2004	All ages	Both	26.6	11.3	56.1	Total deaths for 5-year period = 9.
2001-2005	All ages	Both	18.8	6.8	45.2	Total deaths for 5-year period = 7.
2002-2006	All ages	Both	18.7	6.8	44.9	Total deaths for 5-year period = 7.
2003-2007	All ages	Both	19.7	7.7	45.8	Total deaths for 5-year period = 8.

Appendix D: Data Endnotes for Wallowa County

Fatality Analysis Reporting System

The Fatality Analysis Reporting System (FARS) collects data on fatal traffic crashes within the 50 states, the District of Columbia and Puerto Rico. To be included in FARS, a crash must involve a motor vehicle traveling on a trafficway customarily open to the public and result in the death of a person (occupant of a vehicle or a non-occupant) within 30 days of the crash.

The Oregon Department of Transportation compiles FARS data into an annual report called the "DUII Data Book for Oregon Counties." This report is the source of county data on alcohol involved motor vehicle fatalities. Alcohol-involved refers to crashes in which the presence of alcohol or alcohol and other drug-related factors (Blood Alcohol Concentration >0.00) contributed wholly or partially to the fatality.

Graphs that appear earlier in this report, and the endnotes that follow, combine 5 years of data (2000-2004, 2001-2005, 2002-2006 and 2003-2007) to show the average percent of motor vehicle fatalities that are alcohol-involved.

Percent of Motor Vehicle Fatalities that Involve Alcohol

Report Period	Age	Gender	Percentage	Lower Limit	Upper Limit	Notes
2000-2004	All ages	Both	20.0	*	*	There were 5 fatalities in the county and 1 involved alcohol in this 5-year period.
2001-2005	All ages	Both	25.0	*	*	There were 4 fatalities in the county and 1 involved alcohol in this 5-year period.
2002-2006	All ages	Both	60.0	*	*	There were 5 fatalities in the county and 3 involved alcohol in this 5-year period.
2003-2007	All ages	Both	60.0	*	*	There were 5 fatalities in the county and 3 involved alcohol in this 5-year period.

*Upper and lower limits for 95% confidence interval are not available.

Appendix D: Data Endnotes for Wallowa County

National Survey on Drug Use and Health

The National Survey on Drug Use and Health is an annual survey sponsored by the Substance Abuse and Mental Health Services Administration. This survey is the primary source of information on prevalence and consequences of alcohol, tobacco and illegal drug use and abuse in the general U.S. civilian non-institutionalized population. As a result the reader should be aware that some populations at greater risk for substance abuse or mental health disorders are not included in the survey sample (i.e. the homeless, incarcerated persons, and military personnel).

Survey data from three years (2002-2004, 2004-2006 and 2006-2008) were combined to yield data for six regions in the state. Region 1 includes Multnomah County; Region 2 includes Clackamas and Washington counties; Region 3 includes Benton, Clatsop, Columbia, Lane, Lincoln, Linn, Marion, Polk, Tillamook and Yamhill counties; Region 4 includes Coos, Curry, Douglas, Jackson, Josephine and Klamath counties; Region 5 includes Baker, Gilliam, Grant, Harney, Hood River, Lake, Malheur, Morrow, Sherman, Umatilla, Union, Wallowa, Wasco and Wheeler counties; and Region 6 is Crook, Deschutes and Jefferson counties.

The endnotes that follow provide results by age group including the upper and lower limits for the 95 percent confidence interval and an estimate of the number of persons affected in the county. Confidence intervals are provided so the reader can determine whether or not a difference between results is statistically significant.

Percent of Persons With Alcohol Dependence or Abuse in the Past Year

Report Period	Age	Gender	Percentage	Lower Limit	Upper Limit	Notes
2002-2004	12 or older	Both	6.7	5.2	8.6	Estimated number of persons affected = 409.
2004-2006	12 or older	Both	6.7	5.1	8.8	Estimated number of persons affected = 407.
2006-2008	12 or older	Both	7.5	5.6	9.8	Estimated number of persons affected = 465.
2006-2008	12 to 17 years	Both	5.9	4.0	8.7	Estimated number of persons affected = 32.
2006-2008	18 or older	Both	7.6	5.7	10.1	Estimated number of persons affected = 435.
2006-2008	18 to 25 years	Both	17.0	14.9	19.2	Estimated number of persons affected = 109. Low precision estimate, based on Oregon rate
2006-2008	26 or older	Both	6.0	4.3	8.4	Estimated number of persons affected = 305.

Appendix D: Data Endnotes for Wallowa County

Percent of Persons with Drug Dependence or Abuse

Report Period	Age	Gender	Percentage	Lower Limit	Upper Limit	Notes
2002-2004	12 or older	Both	3.0	2.3	4.1	Estimated number of persons affected = 183.
2004-2006	12 or older	Both	2.6	1.9	3.8	Estimated number of persons affected = 158.
2006-2008	12 or older	Both	2.8	1.8	4.3	Estimated number of persons affected = 172.
2006-2008	12 to 17 years	Both	4.6	3.2	6.6	Estimated number of persons affected = 25.
2006-2008	18 or older	Both	2.6	1.6	4.2	Estimated number of persons affected = 145.
2006-2008	18 to 25 years	Both	8.6	7.2	10.3	Estimated number of persons affected = 56. Low precision estimate, based on Oregon rate
2006-2008	26 or older	Both	2.0	1.4	2.8	Estimated number of persons affected = 100. Low precision estimate, based on Oregon rate

Percent of Persons Who Used Marijuana or Hashish in the Past 30 Days

Report Period	Age	Gender	Percentage	Lower Limit	Upper Limit	Notes
2002-2004	18 to 25 years	Both	21.7	19.0	24.0	Estimated number of persons affected = 86. Low precision estimate, based on Oregon rate
2002-2004	26 or older	Both	4.8	3.0	8.0	Estimated number of persons affected = 243.
2004-2006	18 to 25 years	Both	19.2	16.7	22.0	Estimated number of persons affected = 102. Low precision estimate, based on Oregon rate
2004-2006	26 or older	Both	4.7	3.0	7.3	Estimated number of persons affected = 237.
2006-2008	12 or older	Both	5.9	4.0	8.4	Estimated number of persons affected = 365.
2006-2008	12 to 17 years	Both	6.5	4.2	10.0	Estimated number of persons affected = 35.

Appendix D: Data Endnotes for Wallowa County

Percent of Persons Who Used Marijuana or Hashish in the Past 30 Days

Report Period	Age	Gender	Percentage	Lower Limit	Upper Limit	Notes
2006-2008	18 or older	Both	5.8	3.9	8.4	Estimated number of persons affected = 329.
2006-2008	18 to 25 years	Both	19.7	17.3	22.4	Estimated number of persons affected = 127. Low precision estimate, based on Oregon rate
2006-2008	26 or older	Both	4.0	2.5	6.4	Estimated number of persons affected = 201.

Percent of Persons Who Used Illicit Drug(s) Other Than Marijuana in the Past 30 Days

Report Period	Age	Gender	Percentage	Lower Limit	Upper Limit	Notes
2002-2004	18 to 25 years	Both	8.8	6.0	13.0	Estimated number of persons affected = 35.
2002-2004	26 or older	Both	2.5	2.0	4.0	Estimated number of persons affected = 126.
2004-2006	18 to 25 years	Both	8.5	5.5	12.8	Estimated number of persons affected = 45.
2004-2006	26 or older	Both	2.3	1.3	3.8	Estimated number of persons affected = 114.
2006-2008	12 or older	Both	4.3	3.0	6.1	Estimated number of persons affected = 266.
2006-2008	12 to 17 years	Both	5.3	3.8	7.5	Estimated number of persons affected = 29.
2006-2008	18 or older	Both	4.1	2.8	6.1	Estimated number of persons affected = 236.
2006-2008	18 to 25 years	Both	10.2	8.5	12.1	Estimated number of persons affected = 65. Low precision estimate, based on Oregon rate
2006-2008	26 or older	Both	3.3	2.1	5.4	Estimated number of persons affected = 169.

Percent of Persons Who Used Prescription Pain Relievers to Get High in the Past Year

Report Period	Age	Gender	Percentage	Lower Limit	Upper Limit	Notes
---------------	-----	--------	------------	-------------	-------------	-------

Appendix D: Data Endnotes for Wallowa County

Percent of Persons Who Used Prescription Pain Relievers to Get High in the Past Year

Report Period	Age	Gender	Percentage	Lower Limit	Upper Limit	Notes
2006-2008	12 or older	Both	5.2	3.8	7.0	Estimated number of persons affected = 325.
2006-2008	12 to 17 years	Both	7.0	4.9	9.8	Estimated number of persons affected = 38.
2006-2008	18 or older	Both	5.0	3.6	6.9	Estimated number of persons affected = 285.
2006-2008	18 to 25 years	Both	15.6	13.6	17.9	Estimated number of persons affected = 101. Low precision estimate, based on Oregon rate
2006-2008	26 or older	Both	3.6	2.4	5.4	Estimated number of persons affected = 183.

Percent of Persons Who Had a Major Depressive Episode in the Past Year

Report Period	Age	Gender	Percentage	Lower Limit	Upper Limit	Notes
2004-2006	18 or older	Both	8.7	6.4	11.7	Estimated number of persons affected = 485.
2006-2008	12 to 17 years	Both	8.6	6.6	11.0	Estimated number of persons affected = 46.

Percent of Persons With Serious Psychological Distress in the Past Year

Report Period	Age	Gender	Percentage	Lower Limit	Upper Limit	Notes
2002-2004	18 or older	Both	9.8	7.4	12.8	Estimated number of persons affected = 533.
2004-2006	18 or older	Both	12.1	9.7	15.1	Estimated number of persons affected = 675.

Appendix D: Data Endnotes for Wallowa County

Oregon Department of Education Annual Report

Administered by Oregon kindergarten teachers, the Kindergarten Readiness Survey is used to assess five developmental domains linked to successful transition to school:

a) approaches to learning; b) social and personal development; c) physical health well-being and motor development; d) general knowledge and cognitive development; and e) communication, literacy and language development.

Survey results are vital for teachers, parents, and policy-makers. Results from the survey inform the policy makers who have an impact on programs for young children.

In 2008, this measure was redefined and the rating codes were given more specificity. As a result, 2008 results may not be comparable to earlier years.

The endnotes that follow provide the percent of children that met the social and personal development domain.

Percent of Kindergarteners With Adequate Social and Personal Development

Report Period	Age	Gender	Percentage	Lower Limit	Upper Limit	Notes
2000	Kindergarten	Both	76.9	*	*	Number surveyed not available
2002	Kindergarten	Both	87.2	*	*	Total surveyed = 47.
2004	Kindergarten	Both	97.1	*	*	Total surveyed = 70.
2006	Kindergarten	Both	95.9	*	*	Total surveyed = 74.
2008	Kindergarten	Both	79.0	*	*	Number surveyed not available

*Upper and lower limits for 95% confidence interval are not available

Appendix D: Data Endnotes for Wallowa County

Oregon Healthy Teens Survey and Oregon Student Wellness Survey

The Oregon Healthy Teens and Student Wellness surveys are Oregon's effort to monitor the health and well-being of adolescents. Survey questions about alcohol, illicit drugs and mental health are based on national outcome measures from the Substance Abuse and Mental Health Services Administration, and the Centers for Disease Control and Prevention.

Both surveys have a high participation rate from districts and schools in most counties, so the results are generally a good representation of 8th and 11th grade students. From 2001 to 2004, results for a number of counties were grouped by the Service Delivery Areas of the Department of Human Services. Beginning in 2006, two years of survey results were pooled allowing county level information to be available for community planning and evaluation efforts. Starting in 2010, county results are from the Oregon Student Wellness Survey. Please note: results for 2010 may differ slightly from county student wellness survey reports. This is the result of a difference in how software packages round numbers.

The endnotes that follow provide county results by grade including the upper and lower limits for the 95 percent confidence interval. Confidence intervals are provided so the reader can determine whether or not a difference between results is statistically significant. Additional notes include the number of youth who responded to the survey item, and whether county results are statistically significantly higher or lower than the state. In the event that the results are from data combined from multiple counties, it is noted. If there was no participation in the county, it is also noted.

9. Current alcohol use by youth

Percent of Youth Who Drank Alcohol on One or More Days in the Past 30 Days

Report Period	Age	Gender	Results	Lower Limit	Upper Limit	Notes
2001	8th grade	Both	29.5	*	*	Total respondents = 95. Baker, Union, Wallowa combined data
2002	8th grade	Both	26.0	*	*	Total respondents = 123. Baker, Union, Wallowa combined data
2003	8th grade	Both		*	*	Total respondents = 0. Schools did not participate
2004	8th grade	Both	37.3	33.5	41.2	County rate is statistically significantly higher than State. Total respondents = 933. Baker, Union, Wallowa combined data
2006	8th grade	Both	32.9	21.2	42.8	Total respondents = 50. Based on 2005 survey. Schools did not participate in 2006.

*Upper and lower limits for 95% confidence interval are not available.

Appendix D: Data Endnotes for Wallowa County

9. Current alcohol use by youth

Percent of Youth Who Drank Alcohol on One or More Days in the Past 30 Days

Report Period	Age	Gender	Results	Lower Limit	Upper Limit	Notes
2008	8th grade	Both		*	*	Total respondents = 0. Schools did not participate
2010	8th grade	Both	24.0	18.8	30.0	Total respondents = 237. Baker, Union, Wallowa combined data
2001	11th grade	Both	47.8	*	*	Total respondents = 67. Baker, Union, Wallowa combined data
2002	11th grade	Both	51.1	*	*	Total respondents = 88. Baker, Union, Wallowa combined data
2003	11th grade	Both		*	*	Total respondents = 0. Schools did not participate
2004	11th grade	Both	45.9	40.5	51.4	Total respondents = 138. Baker, Wallowa combined data
2006	11th grade	Both	56.8	46.1	67.9	County rate is statistically significantly higher than State. Total respondents = 42. Based on 2005 survey. Schools did not participate in 2006.
2008	11th grade	Both		*	*	Total respondents = 0. Schools did not participate
2010	11th grade	Both	44.0	37.6	50.6	County rate is statistically significantly higher than State. Total respondents = 265. Baker, Union, Wallowa combined data

10. Current binge drinking by youth

Percent of Youth Who Report Binge Drinking in the Past 30 Days

Report Period	Age	Gender	Results	Lower Limit	Upper Limit	Notes
2001	8th grade	Both	10.6	*	*	Total respondents = 94. Baker, Union, Wallowa combined data
2002	8th grade	Both	11.6	*	*	Total respondents = 121. Baker, Union, Wallowa combined data
2003	8th grade	Both		*	*	Total respondents = 0. Schools did not participate

*Upper and lower limits for 95% confidence interval are not available.

Appendix D: Data Endnotes for Wallowa County

10. Current binge drinking by youth

Percent of Youth Who Report Binge Drinking in the Past 30 Days

Report Period	Age	Gender	Results	Lower Limit	Upper Limit	Notes
2004	8th grade	Both	16.2	13.2	19.2	County rate is statistically significantly higher than State. Total respondents = 275. Baker, Union, Wallowa combined data
2006	8th grade	Both	13.2	4.5	19.5	Total respondents = 50. Based on 2005 survey. Schools did not participate in 2006.
2008	8th grade	Both		*	*	Total respondents = 0. Schools did not participate
2010	8th grade	Both	12.2	8.5	17.2	Total respondents = 237. Baker, Union, Wallowa combined data
2001	11th grade	Both	28.4	*	*	Total respondents = 67. Baker, Union, Wallowa combined data
2002	11th grade	Both	37.2	*	*	Total respondents = 86. Baker, Union, Wallowa combined data
2003	11th grade	Both		*	*	Total respondents = 0. Schools did not participate
2004	11th grade	Both	33.4	28.2	38.5	Total respondents = 137. Baker, Wallowa combined data
2006	11th grade	Both	43.9	33.8	55.7	County rate is statistically significantly higher than State. Total respondents = 42. Based on 2005 survey. Schools did not participate in 2006.
2008	11th grade	Both		*	*	Total respondents = 0. Schools did not participate
2010	11th grade	Both	29.2	23.6	35.5	County rate is statistically significantly higher than State. Total respondents = 265. Baker, Union, Wallowa combined data

11. Drinking and driving among youth

Percent of Youth Who Drove When They Had Been Drinking Alcohol

Report Period	Age	Gender	Results	Lower Limit	Upper Limit	Notes
2001	11th grade	Both	18.0	*	*	Total respondents = 61. Baker, Union, Wallowa combined data

*Upper and lower limits for 95% confidence interval are not available.

Appendix D: Data Endnotes for Wallowa County

11. Drinking and driving among youth

Percent of Youth Who Drove When They Had Been Drinking Alcohol

Report Period	Age	Gender	Results	Lower Limit	Upper Limit	Notes
2002	11th grade	Both	11.3	*	*	Total respondents = 53. Baker, Union, Wallowa combined data
2003	11th grade	Both		*	*	Total respondents = 0. Schools did not participate
2004	11th grade	Both	15.3	11.1	19.4	County rate is statistically significantly higher than State. Total respondents = 123. Baker, Morrow, Umatilla, Wallowa combined data
2006	11th grade	Both	10.6	3.6	16.7	Total respondents = 43. Based on 2005 survey. Schools did not participate in 2006.
2008	11th grade	Both		*	*	Total respondents = 0. Schools did not participate
2010	11th grade	Both	0.0	0.0	0.0	County rate is statistically significantly lower than State. Total respondents = 5.

12. Current gambling by youth

Percent of Youth Who Gambled in the Past 30 Days

Report Period	Age	Gender	Results	Lower Limit	Upper Limit	Notes
2004	8th grade	Both	41.1	29.8	41.7	Total respondents = 12.
2006	8th grade	Both	18.0	9.1	26.9	Total respondents = 50. Based on 2005 survey. Schools did not participate in 2006.
2010	8th grade	Both	48.4	41.9	54.9	Total respondents = 239. Baker, Union, Wallowa combined data
2004	11th grade	Both	29.9	24.7	34.8	Total respondents = 519. Baker, Morrow, Umatilla, Wallowa combined data
2006	11th grade	Both	34.5	24.2	44.8	Total respondents = 43. Based on 2005 survey. Schools did not participate in 2006.

*Upper and lower limits for 95% confidence interval are not available.

Appendix D: Data Endnotes for Wallowa County

12. Current gambling by youth

Percent of Youth Who Gambled in the Past 30 Days

Report Period	Age	Gender	Results	Lower Limit	Upper Limit	Notes
2008	11th grade	Both		*	*	Total respondents = 0. Schools did not participate
2010	11th grade	Both	0.0	0.0	0.0	County rate is statistically significantly lower than State. Total respondents = 5.

13. Early initiation of alcohol use

Percent of Youth Who Report They Were Less Than 11 Years Old When They Drank Alcohol for the First Time

Report Period	Age	Gender	Results	Lower Limit	Upper Limit	Notes
2001	8th grade	Both	21.2	*	*	Total respondents = 221. Baker, Union, Wallowa combined data
2002	8th grade	Both	23.0	*	*	Total respondents = 217. Baker, Union, Wallowa combined data
2003	8th grade	Both		*	*	Total respondents = 0. Schools did not participate
2004	8th grade	Both	20.8	14.9	21.2	Total respondents = 424. Baker, Union, Wallowa combined data
2006	8th grade	Both	28.0	17.6	38.4	Total respondents = 50. Based on 2005 survey. Schools did not participate in 2006.
2008	8th grade	Both		*	*	Total respondents = 0. Schools did not participate
2010	8th grade	Both	12.8	7.0	23.5	Total respondents = 235. Baker, Union, Wallowa combined data

13. Early initiation of alcohol use

Percent of Youth Who Report They Were Less Than 13 Years Old When They Drank Alcohol for the First Time

Report Period	Age	Gender	Results	Lower Limit	Upper Limit	Notes
---------------	-----	--------	---------	-------------	-------------	-------

*Upper and lower limits for 95% confidence interval are not available.

Appendix D: Data Endnotes for Wallowa County

13. Early initiation of alcohol use

Percent of Youth Who Report They Were Less Than 13 Years Old When They Drank Alcohol for the First Time

Report Period	Age	Gender	Results	Lower Limit	Upper Limit	Notes
2001	11th grade	Both	26.2	*	*	Total respondents = 65. Baker, Union, Wallowa combined data
2002	11th grade	Both	29.2	*	*	Total respondents = 86. Baker, Union, Wallowa combined data
2003	11th grade	Both		*	*	Total respondents = 0. Schools did not participate
2004	11th grade	Both	28.5	23.5	33.5	Total respondents = 134. Baker, Wallowa combined data
2006	11th grade	Both	29.2	19.2	39.2	Total respondents = 42. Based on 2005 survey. Schools did not participate in 2006.
2008	11th grade	Both		*	*	Total respondents = 0. Schools did not participate
2010	11th grade	Both	17.1	8.8	33.6	Total respondents = 263. Baker, Union, Wallowa combined data

14. Average age of initial alcohol use

Average Age of Initial Alcohol Use

Report Period	Age	Gender	Results	Lower Limit	Upper Limit	Notes
2001	8th grade	Both	10.7	*	*	Total respondents = 221. Baker, Union, Wallowa combined data
2002	8th grade	Both	10.8	*	*	Total respondents = 217. Baker, Union, Wallowa combined data
2003	8th grade	Both		*	*	Total respondents = 0. Schools did not participate
2004	8th grade	Both	11.3	11.1	11.5	Total respondents = 424. Baker, Union, Wallowa combined data
2006	8th grade	Both	11.1	10.5	11.7	Total respondents = 50. Based on 2005 survey. Schools did not participate in 2006.

*Upper and lower limits for 95% confidence interval are not available.

Appendix D: Data Endnotes for Wallowa County

14. Average age of initial alcohol use

Average Age of Initial Alcohol Use

Report Period	Age	Gender	Results	Lower Limit	Upper Limit	Notes
2008	8th grade	Both		*	*	Total respondents = 0. Schools did not participate
2010	8th grade	Both	11.4	11.0	11.7	Total respondents = 235. Baker, Union, Wallowa combined data
2001	11th grade	Both	12.8	*	*	Total respondents = 189. Baker, Union, Wallowa combined data
2002	11th grade	Both	12.6	*	*	Total respondents = 182. Baker, Union, Wallowa combined data
2003	11th grade	Both		*	*	Total respondents = 0. Schools did not participate
2004	11th grade	Both	12.8	12.4	13.1	County rate is statistically significantly lower than State. Total respondents = 515. Baker, Umatilla, Wallowa combined data
2006	11th grade	Both	12.9	12.3	13.5	Total respondents = 42. Based on 2005 survey. Schools did not participate in 2006.
2008	11th grade	Both		*	*	Total respondents = 0. Schools did not participate
2010	11th grade	Both	13.7	13.3	14.0	Total respondents = 263. Baker, Union, Wallowa combined data

15. Availability of alcohol

Percent of Youth Who Say It Is "Sort of Easy" or "Very Easy" to Get Some Beer, Wine or Hard Liquor

Report Period	Age	Gender	Results	Lower Limit	Upper Limit	Notes
2004	8th grade	Both	53.4	49.3	57.5	Total respondents = 261. Baker, Union, Wallowa combined data
2006	8th grade	Both	60.0	48.7	71.3	Total respondents = 50. Based on 2005 survey. Schools did not participate in 2006.

*Upper and lower limits for 95% confidence interval are not available.

Appendix D: Data Endnotes for Wallowa County

15. Availability of alcohol

Percent of Youth Who Say It Is "Sort of Easy" or "Very Easy" to Get Some Beer, Wine or Hard Liquor

Report Period	Age	Gender	Results	Lower Limit	Upper Limit	Notes
2008	8th grade	Both		*	*	Total respondents = 0. Schools did not participate
2010	8th grade	Both	46.8	40.2	53.4	Total respondents = 234. Baker, Union, Wallowa combined data
2004	11th grade	Both	81.1	76.8	85.5	Total respondents = 134. Baker, Wallowa combined data
2006	11th grade	Both	92.9	87.2	98.7	County rate is statistically significantly higher than State. Total respondents = 41. Based on 2005 survey. Schools did not participate in 2006.
2008	11th grade	Both		*	*	Total respondents = 0. Schools did not participate
2010	11th grade	Both	73.4	67.2	78.8	Total respondents = 266. Baker, Union, Wallowa combined data

16. Perceived risk of harm from alcohol use

Percent of Youth Who Believe There is "Moderate" or "Great" Risk of Harm from Drinking Nearly Every Day

Report Period	Age	Gender	Results	Lower Limit	Upper Limit	Notes
2001	8th grade	Both	67.5	*	*	Total respondents = 80. Baker, Union, Wallowa combined data
2002	8th grade	Both	66.8	*	*	Total respondents = 199. Baker, Union, Wallowa combined data
2003	8th grade	Both		*	*	Total respondents = 0. Schools did not participate
2004	8th grade	Both	68.3	66.9	69.6	County rate is statistically significantly higher than State. Total respondents = 258. Baker, Union, Wallowa combined data
2006	8th grade	Both	50.0	37.3	60.6	County rate is statistically significantly lower than State. Total respondents = 49. Based on 2005 survey. Schools did not participate in 2006.

*Upper and lower limits for 95% confidence interval are not available.

Appendix D: Data Endnotes for Wallowa County

16. *Perceived risk of harm from alcohol use*

Percent of Youth Who Believe There is "Moderate" or "Great" Risk of Harm from Drinking Nearly Every Day

Report Period	Age	Gender	Results	Lower Limit	Upper Limit	Notes
2008	8th grade	Both		*	*	Total respondents = 0. Schools did not participate
2010	8th grade	Both	63.6	56.8	69.8	Total respondents = 228. Baker, Union, Wallowa combined data
2001	11th grade	Both	68.5	*	*	Total respondents = 54. Baker, Union, Wallowa combined data
2002	11th grade	Both	71.1	*	*	Total respondents = 45. Baker, Union, Wallowa combined data
2003	11th grade	Both		*	*	Total respondents = 0. Schools did not participate
2004	11th grade	Both	60.3	57.2	63.4	County rate is statistically significantly lower than State. Total respondents = 135. Baker, Wallowa combined data
2006	11th grade	Both	38.4	27.7	49.1	County rate is statistically significantly lower than State. Total respondents = 42. Based on 2005 survey. Schools did not participate in 2006.
2008	11th grade	Both		*	*	Total respondents = 0. Schools did not participate
2010	11th grade	Both	54.8	48.1	61.4	County rate is statistically significantly lower than State. Total respondents = 258. Baker, Union, Wallowa combined data

17. *Perception of parent disapproval of alcohol use*

Percent of Youth Who Say Their Parents Think It Is "Wrong" or "Very Wrong" for Youth to Drink Alcohol

Report Period	Age	Gender	Results	Lower Limit	Upper Limit	Notes
2001	8th grade	Both	93.9	*	*	Total respondents = 82. Baker, Union, Wallowa combined data
2002	8th grade	Both	89.1	*	*	Total respondents = 129. Baker, Union, Wallowa combined data
2003	8th grade	Both		*	*	Total respondents = 0. Schools did not participate

*Upper and lower limits for 95% confidence interval are not available.

Appendix D: Data Endnotes for Wallowa County

17. Perception of parent disapproval of alcohol use

Percent of Youth Who Say Their Parents Think It Is "Wrong" or "Very Wrong" for Youth to Drink Alcohol

Report Period	Age	Gender	Results	Lower Limit	Upper Limit	Notes
2004	8th grade	Both	82.9	78.0	87.7	County rate is statistically significantly lower than State. Total respondents = 119. Baker, Union, Wallowa combined data
2006	8th grade	Both	89.5	83.1	96.9	Total respondents = 50. Based on 2005 survey. Schools did not participate in 2006.
2008	8th grade	Both		*	*	Total respondents = 0. Schools did not participate
2010	8th grade	Both	84.8	79.4	89.0	County rate is statistically significantly lower than State. Total respondents = 233. Baker, Union, Wallowa combined data
2001	11th grade	Both	91.8	*	*	Total respondents = 61. Baker, Union, Wallowa combined data
2002	11th grade	Both	78.0	*	*	Total respondents = 91. Baker, Union, Wallowa combined data
2003	11th grade	Both		*	*	Total respondents = 0. Schools did not participate
2004	11th grade	Both	74.0	69.2	78.9	County rate is statistically significantly lower than State. Total respondents = 132. Baker, Wallowa combined data
2006	11th grade	Both	82.4	73.5	90.2	Total respondents = 43. Based on 2005 survey. Schools did not participate in 2006.
2008	11th grade	Both		*	*	Total respondents = 0. Schools did not participate
2010	11th grade	Both	72.0	65.6	77.6	County rate is statistically significantly lower than State. Total respondents = 257. Baker, Union, Wallowa combined data

24. Current marijuana use by youth

Percent of Youth Who Used Marijuana One or More Times in the Past 30 Days

Report Period	Age	Gender	Results	Lower Limit	Upper Limit	Notes
2001	8th grade	Both	12.6	*	*	Total respondents = 95. Baker, Union, Wallowa combined data

*Upper and lower limits for 95% confidence interval are not available.

Appendix D: Data Endnotes for Wallowa County

24. *Current marijuana use by youth*

Percent of Youth Who Used Marijuana One or More Times in the Past 30 Days

Report Period	Age	Gender	Results	Lower Limit	Upper Limit	Notes
2002	8th grade	Both	12.2	*	*	Total respondents = 123. Baker, Union, Wallowa combined data
2003	8th grade	Both		*	*	Total respondents = 0. Schools did not participate
2004	8th grade	Both	8.2	6.0	10.4	Total respondents = 269. Baker, Union, Wallowa combined data
2006	8th grade	Both	4.0	0.0	8.5	County rate is statistically significantly lower than State. Total respondents = 50. Based on 2005 survey. Schools did not participate in 2006.
2008	8th grade	Both		*	*	Total respondents = 0. Schools did not participate
2010	8th grade	Both	10.6	7.1	15.4	Total respondents = 234. Baker, Union, Wallowa combined data
2001	11th grade	Both	19.1	*	*	Total respondents = 68. Baker, Union, Wallowa combined data
2002	11th grade	Both	24.1	*	*	Total respondents = 87. Baker, Union, Wallowa combined data
2003	11th grade	Both		*	*	Total respondents = 0. Schools did not participate
2004	11th grade	Both	17.1	12.8	21.5	Total respondents = 125. Baker, Wallowa combined data
2006	11th grade	Both	29.8	20.1	40.0	County rate is statistically significantly higher than State. Total respondents = 43. Based on 2005 survey. Schools did not participate in 2006.
2008	11th grade	Both		*	*	Total respondents = 0. Schools did not participate
2010	11th grade	Both	25.7	20.3	31.9	Total respondents = 264. Baker, Union, Wallowa combined data

*Upper and lower limits for 95% confidence interval are not available.

Appendix D: Data Endnotes for Wallowa County

25. Past month illicit drug use, other than marijuana

Percent of Youth Who Used Illicit Drug(s) Other Than Marijuana in the Past 30 Days

Report Period	Age	Gender	Results	Lower Limit	Upper Limit	Notes
2004	8th grade	Both	3.3	1.9	4.8	Total respondents = 276. Baker, Morrow, Umatilla, Union, Wallowa combined data
2006	8th grade	Both	0.0	*	*	Total respondents = 47. Based on 2005 survey. Schools did not participate in 2006.
2008	8th grade	Both		*	*	Total respondents = 0. Schools did not participate
2010	8th grade	Both	3.3	1.6	6.6	Total respondents = 238. Baker, Union, Wallowa combined data
2004	11th grade	Both	5.6	3.0	8.1	Total respondents = 133. Baker, Wallowa combined data
2006	11th grade	Both	0.0	*	*	Total respondents = 41. Based on 2005 survey. Schools did not participate in 2006.
2008	11th grade	Both		*	*	Total respondents = 0. Schools did not participate
2010	11th grade	Both	0.0	0.0	0.0	County rate is statistically significantly lower than State. Total respondents = 5.

26. Inhalant use by youth

Percent of Youth Who Used Inhalants in the Past 30 Days

Report Period	Age	Gender	Results	Lower Limit	Upper Limit	Notes
2001	8th grade	Both	5.4	*	*	Total respondents = 93. Baker, Union, Wallowa combined data
2002	8th grade	Both	11.4	*	*	Total respondents = 123. Baker, Union, Wallowa combined data
2003	8th grade	Both		*	*	Total respondents = 0. Schools did not participate

*Upper and lower limits for 95% confidence interval are not available.

Appendix D: Data Endnotes for Wallowa County

26. *Inhalant use by youth*

Percent of Youth Who Used Inhalants in the Past 30 Days

Report Period	Age	Gender	Results	Lower Limit	Upper Limit	Notes
2004	8th grade	Both	10.2	7.7	12.6	County rate is statistically significantly higher than State. Total respondents = 276. Baker, Union, Wallowa combined data
2006	8th grade	Both	0.0	*	*	Total respondents = 50. Based on 2005 survey. Schools did not participate in 2006.
2008	8th grade	Both		*	*	Total respondents = 0. Schools did not participate
2010	8th grade	Both	5.8	3.4	9.7	Total respondents = 238. Baker, Union, Wallowa combined data
2001	11th grade	Both	3.0	*	*	Total respondents = 66. Baker, Union, Wallowa combined data
2002	11th grade	Both	3.5	*	*	Total respondents = 86. Baker, Union, Wallowa combined data
2003	11th grade	Both		*	*	Total respondents = 0. Schools did not participate
2004	11th grade	Both	4.1	1.9	6.3	Total respondents = 134. Baker, Wallowa combined data
2006	11th grade	Both	0.0	*	*	Total respondents = 42. Based on 2005 survey. Schools did not participate in 2006.
2008	11th grade	Both		*	*	Total respondents = 0. Schools did not participate
2010	11th grade	Both	4.3	2.3	7.8	Total respondents = 265. Baker, Union, Wallowa combined data

27. *Prescription drug use in the past month*

Percent of Youth Who Used Prescription Drugs to Get High in the Past 30 Days

Report Period	Age	Gender	Results	Lower Limit	Upper Limit	Notes
2001	8th grade	Both	1.1	*	*	Total respondents = 93. Baker, Union, Wallowa combined data

*Upper and lower limits for 95% confidence interval are not available.

Appendix D: Data Endnotes for Wallowa County

27. Prescription drug use in the past month

Percent of Youth Who Used Prescription Drugs to Get High in the Past 30 Days

Report Period	Age	Gender	Results	Lower Limit	Upper Limit	Notes
2002	8th grade	Both	4.1	*	*	Total respondents = 121. Baker, Union, Wallowa combined data
2003	8th grade	Both		*	*	Total respondents = 0. Schools did not participate
2004	8th grade	Both	5.7	3.8	7.6	Total respondents = 277. Baker, Union, Wallowa combined data
2006	8th grade	Both	0.0	*	*	Total respondents = 50. Based on 2005 survey. Schools did not participate in 2006.
2008	8th grade	Both		*	*	Total respondents = 0. Schools did not participate
2010	8th grade	Both	5.0	2.8	8.7	Total respondents = 238. Baker, Union, Wallowa combined data
2001	11th grade	Both	6.1	*	*	Total respondents = 66. Baker, Union, Wallowa combined data
2002	11th grade	Both	5.9	*	*	Total respondents = 85. Baker, Union, Wallowa combined data
2003	11th grade	Both		*	*	Total respondents = 0. Schools did not participate
2004	11th grade	Both	6.9	4.1	9.8	Total respondents = 133. Baker, Wallowa combined data
2006	11th grade	Both	22.0	13.2	31.5	County rate is statistically significantly higher than State. Total respondents = 42. Based on 2005 survey. Schools did not participate in 2006.
2008	11th grade	Both		*	*	Total respondents = 0. Schools did not participate
2010	11th grade	Both	7.7	4.9	12.0	Total respondents = 265. Baker, Union, Wallowa combined data

*Upper and lower limits for 95% confidence interval are not available.

Appendix D: Data Endnotes for Wallowa County

28. *Early initiation of marijuana use*

Percent of Youth Who Report They Were Less Than 11 Years Old When They Tried Marijuana for the First Time

Report Period	Age	Gender	Results	Lower Limit	Upper Limit	Notes
2001	8th grade	Both	1.9	*	*	Total respondents = 216. Baker, Union, Wallowa combined data
2002	8th grade	Both	3.7	*	*	Total respondents = 219. Baker, Union, Wallowa combined data
2003	8th grade	Both		*	*	Total respondents = 0. Schools did not participate
2004	8th grade	Both	2.9	1.5	4.3	Total respondents = 274. Baker, Union, Wallowa combined data
2006	8th grade	Both	6.0	0.5	11.5	Total respondents = 50. Based on 2005 survey. Schools did not participate in 2006.
2008	8th grade	Both		*	*	Total respondents = 0. Schools did not participate
2010	8th grade	Both	3.2	1.0	10.6	Total respondents = 236. Baker, Union, Wallowa combined data

28. *Early initiation of marijuana use*

Percent of Youth Who Report They Were Less Than 13 Years Old When They Tried Marijuana for the First Time

Report Period	Age	Gender	Results	Lower Limit	Upper Limit	Notes
2001	11th grade	Both	3.1	*	*	Total respondents = 64. Baker, Union, Wallowa combined data
2002	11th grade	Both	8.3	*	*	Total respondents = 86. Baker, Union, Wallowa combined data
2003	11th grade	Both		*	*	Total respondents = 0. Schools did not participate
2004	11th grade	Both	5.0	2.6	7.4	Total respondents = 135. Baker, Wallowa combined data
2006	11th grade	Both	10.2	3.6	16.7	Total respondents = 43. Based on 2005 survey. Schools did not participate in 2006.

*Upper and lower limits for 95% confidence interval are not available.

Appendix D: Data Endnotes for Wallowa County

28. *Early initiation of marijuana use*

Percent of Youth Who Report They Were Less Than 13 Years Old When They Tried Marijuana for the First Time

Report Period	Age	Gender	Results	Lower Limit	Upper Limit	Notes
2008	11th grade	Both		*	*	Total respondents = 0. Schools did not participate
2010	11th grade	Both	7.8	3.1	20.8	Total respondents = 267. Baker, Union, Wallowa combined data

29. *Average age of initial marijuana use*

Average Age of Initial Marijuana Use

Report Period	Age	Gender	Results	Lower Limit	Upper Limit	Notes
2001	8th grade	Both	12.1	*	*	Total respondents = 216. Baker, Union, Wallowa combined data
2002	8th grade	Both	12.0	*	*	Total respondents = 219. Baker, Union, Wallowa combined data
2003	8th grade	Both		*	*	Total respondents = 0. Schools did not participate
2004	8th grade	Both	11.9	11.8	12.1	County rate is statistically significantly higher than State. Total respondents = 418. Baker, Morrow, Umatilla, Union, Wallowa combined data
2006	8th grade	Both	8.0	8.0	8.0	County rate is statistically significantly lower than State. Total respondents = 50. Based on 2005 survey. Schools did not participate in 2006. All youth that have smoked marijuana marijuana, first tried marijuana at 8 years of age or younger.
2008	8th grade	Both		*	*	Total respondents = 0. Schools did not participate
2010	8th grade	Both	12.0	11.4	12.5	Total respondents = 236. Baker, Union, Wallowa combined data
2001	11th grade	Both	14.5	*	*	Total respondents = 189. Baker, Union, Wallowa combined data

*Upper and lower limits for 95% confidence interval are not available.

Appendix D: Data Endnotes for Wallowa County

29. Average age of initial marijuana use

Average Age of Initial Marijuana Use

Report Period	Age	Gender	Results	Lower Limit	Upper Limit	Notes
2002	11th grade	Both	14.0	*	*	Total respondents = 181. Baker, Union, Wallowa combined data
2003	11th grade	Both		*	*	Total respondents = 0. Schools did not participate
2004	11th grade	Both	14.3	14.2	14.4	County rate is statistically significantly higher than State. Total respondents = 509. Baker, Morrow, Umatilla, Wallowa combined data
2006	11th grade	Both	13.9	13.2	14.7	Total respondents = 43. Based on 2005 survey. Schools did not participate in 2006.
2008	11th grade	Both		*	*	Total respondents = 0. Schools did not participate
2010	11th grade	Both	14.2	13.8	14.6	Total respondents = 267. Baker, Union, Wallowa combined data

30. Availability of marijuana

Percent of Youth Who Say It Would Be "Sort of Easy" or "Very Easy" to Get Marijuana

Report Period	Age	Gender	Results	Lower Limit	Upper Limit	Notes
2001	8th grade	Both	37.2	*	*	Total respondents = 86. Baker, Union, Wallowa combined data
2002	8th grade	Both	44.5	*	*	Total respondents = 119. Baker, Union, Wallowa combined data
2003	8th grade	Both		*	*	Total respondents = 0. Schools did not participate
2004	8th grade	Both	27.0	23.3	30.6	County rate is statistically significantly lower than State. Total respondents = 116. Baker, Union, Wallowa combined data
2006	8th grade	Both		*	*	Total respondents = 0. Schools did not participate in 2006 when this question was asked

*Upper and lower limits for 95% confidence interval are not available.

Appendix D: Data Endnotes for Wallowa County

30. Availability of marijuana

Percent of Youth Who Say It Would Be "Sort of Easy" or "Very Easy" to Get Marijuana

Report Period	Age	Gender	Results	Lower Limit	Upper Limit	Notes
2008	8th grade	Both		*	*	Total respondents = 0. Schools did not participate
2010	8th grade	Both	24.6	19.3	30.8	County rate is statistically significantly lower than State. Total respondents = 230. Baker, Union, Wallowa combined data
2001	11th grade	Both	81.0	*	*	Total respondents = 63. Baker, Morrow, Umatilla, Union, Wallowa combined data
2002	11th grade	Both	83.7	*	*	Total respondents = 86. Baker, Union, Wallowa combined data
2003	11th grade	Both		*	*	Total respondents = 0. Schools did not participate
2004	11th grade	Both	65.2	60.0	70.5	Total respondents = 134. Baker, Wallowa combined data
2006	11th grade	Both		*	*	Total respondents = 0. Schools did not participate in 2006 when this question was asked
2008	11th grade	Both		*	*	Total respondents = 0. Schools did not participate
2010	11th grade	Both	63.9	57.4	70.0	Total respondents = 266. Baker, Union, Wallowa combined data

31. Availability of illicit drugs

Percent of Youth Who Say It Would Be "Sort of Easy" or "Very Easy" to Get Illicit Drugs

Report Period	Age	Gender	Results	Lower Limit	Upper Limit	Notes
2001	8th grade	Both	13.5	*	*	Total respondents = 89. Baker, Union, Wallowa combined data
2002	8th grade	Both	17.6	*	*	Total respondents = 119. Baker, Union, Wallowa combined data
2003	8th grade	Both		*	*	Total respondents = 0. Schools did not participate

*Upper and lower limits for 95% confidence interval are not available.

Appendix D: Data Endnotes for Wallowa County

31. Availability of illicit drugs

Percent of Youth Who Say It Would Be "Sort of Easy" or "Very Easy" to Get Illicit Drugs

Report Period	Age	Gender	Results	Lower Limit	Upper Limit	Notes
2004	8th grade	Both	10.5	7.9	13.0	Total respondents = 261. Baker, Union, Wallowa combined data
2006	8th grade	Both		*	*	Total respondents = 0. Schools did not participate in 2006 when this question was asked
2008	8th grade	Both		*	*	Total respondents = 0. Schools did not participate
2010	8th grade	Both	7.2	4.5	11.5	Total respondents = 232. Baker, Union, Wallowa combined data
2001	11th grade	Both	35.9	*	*	Total respondents = 64. Baker, Union, Wallowa combined data
2002	11th grade	Both	36.0	*	*	Total respondents = 86. Baker, Union, Wallowa combined data
2003	11th grade	Both		*	*	Total respondents = 0. Schools did not participate
2004	11th grade	Both	16.7	12.5	20.8	County rate is statistically significantly lower than State. Total respondents = 134. Baker, Wallowa combined data
2006	11th grade	Both		*	*	Total respondents = 0. Schools did not participate in 2006 when this question was asked
2008	11th grade	Both		*	*	Total respondents = 0. Schools did not participate
2010	11th grade	Both	0.0	0.0	0.0	County rate is statistically significantly lower than State. Total respondents = 5.

32. Perceived risk of harm from regular marijuana use

Percent of Youth Who Believe There is "Moderate" or "Great" Risk of Harm from Smoking Marijuana Once or Twice a Week

Report Period	Age	Gender	Results	Lower Limit	Upper Limit	Notes
---------------	-----	--------	---------	-------------	-------------	-------

*Upper and lower limits for 95% confidence interval are not available.

Appendix D: Data Endnotes for Wallowa County

32. *Perceived risk of harm from regular marijuana use*

Percent of Youth Who Believe There is "Moderate" or "Great" Risk of Harm from Smoking Marijuana Once or Twice a Week

Report Period	Age	Gender	Results	Lower Limit	Upper Limit	Notes
2004	8th grade	Both	88.2	85.5	90.9	Total respondents = 256. Baker, Union, Wallowa combined data
2006	8th grade	Both	91.7	85.2	98.2	County rate is statistically significantly higher than State. Total respondents = 48. Based on 2005 survey. Schools did not participate in 2006.
2008	8th grade	Both		*	*	Total respondents = 0. Schools did not participate
2010	8th grade	Both	79.5	73.5	84.5	Total respondents = 224. Baker, Union, Wallowa combined data
2004	11th grade	Both	75.1	70.3	79.9	Total respondents = 135. Baker, Wallowa combined data
2006	11th grade	Both	76.5	66.9	86.0	Total respondents = 41. Based on 2005 survey. Schools did not participate in 2006.
2008	11th grade	Both		*	*	Total respondents = 0. Schools did not participate
2010	11th grade	Both	61.6	55.0	67.9	Total respondents = 259. Baker, Union, Wallowa combined data

33. *Perception of parent disapproval of marijuana use*

Percent of Youth Who Say Their Parents Think It Is "Wrong" or "Very Wrong" for Youth to Smoke Marijuana

Report Period	Age	Gender	Results	Lower Limit	Upper Limit	Notes
2001	8th grade	Both	93.9	*	*	Total respondents = 82. Baker, Union, Wallowa combined data
2002	8th grade	Both	93.8	*	*	Total respondents = 129. Baker, Union, Wallowa combined data
2003	8th grade	Both		*	*	Total respondents = 0. Schools did not participate

*Upper and lower limits for 95% confidence interval are not available.

Appendix D: Data Endnotes for Wallowa County

33. *Perception of parent disapproval of marijuana use*

Percent of Youth Who Say Their Parents Think It Is "Wrong" or "Very Wrong" for Youth to Smoke Marijuana

Report Period	Age	Gender	Results	Lower Limit	Upper Limit	Notes
2004	8th grade	Both	95.1	94.1	96.0	Total respondents = 118. Baker, Union, Wallowa combined data
2006	8th grade	Both	100.0	*	*	Total respondents = 50. Based on 2005 survey. Schools did not participate in 2006.
2008	8th grade	Both		*	*	Total respondents = 0. Schools did not participate
2010	8th grade	Both	95.1	91.2	97.3	Total respondents = 230. Baker, Union, Wallowa combined data
2001	11th grade	Both	91.8	*	*	Total respondents = 61. Baker, Union, Wallowa combined data
2002	11th grade	Both	89.0	*	*	Total respondents = 91. Baker, Union, Wallowa combined data
2003	11th grade	Both		*	*	Total respondents = 0. Schools did not participate
2004	11th grade	Both	82.3	79.9	84.7	County rate is statistically significantly lower than State. Total respondents = 131. Baker, Wallowa combined data
2006	11th grade	Both	98.8	95.4	100.0	County rate is statistically significantly higher than State. Total respondents = 43. Based on 2005 survey. Schools did not participate in 2006.
2008	11th grade	Both		*	*	Total respondents = 0. Schools did not participate
2010	11th grade	Both	89.3	84.4	92.8	Total respondents = 254. Baker, Union, Wallowa combined data

35. *Attempted suicide by youth*

Percent of Youth Who Attempted Suicide in the Past Year

Report Period	Age	Gender	Results	Lower Limit	Upper Limit	Notes
---------------	-----	--------	---------	-------------	-------------	-------

*Upper and lower limits for 95% confidence interval are not available.

Appendix D: Data Endnotes for Wallowa County

35. *Attempted suicide by youth*

Percent of Youth Who Attempted Suicide in the Past Year

Report Period	Age	Gender	Results	Lower Limit	Upper Limit	Notes
2001	8th grade	Both	6.3	*	*	Total respondents = 79. Baker, Union, Wallowa combined data
2002	8th grade	Both	10.9	*	*	Total respondents = 71. Baker, Union Wallowa combined data
2003	8th grade	Both		*	*	Total respondents = 0. Schools did not participate
2004	8th grade	Both	10.4	7.9	12.9	Total respondents = 270. Baker, Union, Wallowa combined data
2006	8th grade	Both	6.6	0.5	11.5	Total respondents = 50. Based on 2005 survey. Schools did not participate in 2006.
2008	8th grade	Both		*	*	Total respondents = 0. Schools did not participate
2010	8th grade	Both	0.0	0.0	0.0	County rate is statistically significantly lower than State. Total respondents = 10.
2001	11th grade	Both	6.7	*	*	Total respondents = 60. Baker, Union, Wallowa combined data
2002	11th grade	Both	6.3	*	*	Total respondents = 54. Baker, Union Wallowa combined data
2003	11th grade	Both		*	*	Total respondents = 0. Schools did not participate
2004	11th grade	Both	2.0	0.5	3.6	County rate is statistically significantly lower than State. Total respondents = 133. Baker, Wallowa combined data
2006	11th grade	Both	6.0	1.5	12.6	Total respondents = 43. Based on 2005 survey. Schools did not participate in 2006.
2008	11th grade	Both		*	*	Total respondents = 0. Schools did not participate
2010	11th grade	Both	0.0	0.0	0.0	County rate is statistically significantly lower than State. Total respondents = 5.

*Upper and lower limits for 95% confidence interval are not available.

Appendix D: Data Endnotes for Wallowa County

39. Youth depression

Percent of Youth Who Had a Depressive Episode in the Past Year

Report Period	Age	Gender	Results	Lower Limit	Upper Limit	Notes
2001	8th grade	Both	14.3	*	*	Total respondents = 84. Baker, Union, Wallowa combined data
2002	8th grade	Both	16.7	*	*	Total respondents = 72. Baker, Union, Wallowa combined data
2003	8th grade	Both		*	*	Total respondents = 0. Schools did not participate
2006	8th grade	Both	6.0	0.5	11.5	County rate is statistically significantly lower than State. Total respondents = 50. Based on 2005 survey. Schools did not participate in 2006.
2008	8th grade	Both		*	*	Total respondents = 0. Schools did not participate
2010	8th grade	Both	23.2	18.0	29.2	Total respondents = 235. Baker, Union, Wallowa combined data
2001	11th grade	Both	16.4	*	*	Total respondents = 61. Baker, Union, Wallowa combined data
2002	11th grade	Both	16.7	*	*	Total respondents = 54. Baker, Union, Wallowa combined data
2003	11th grade	Both		*	*	Total respondents = 0. Schools did not participate
2006	11th grade	Both	22.4	13.2	31.5	Total respondents = 42. Based on 2005 survey. Schools did not participate in 2006.
2008	11th grade	Both		*	*	Total respondents = 0. Schools did not participate
2010	11th grade	Both	19.9	15.1	25.6	Total respondents = 267. Baker, Union, Wallowa combined data

40. Psychological distress among youth

Percent of Youth that Exhibit Psychological Distress Based on Mental Health Inventory-5 (MHI-5)

Report Period	Age	Gender	Results	Lower Limit	Upper Limit	Notes
---------------	-----	--------	---------	-------------	-------------	-------

*Upper and lower limits for 95% confidence interval are not available.

Appendix D: Data Endnotes for Wallowa County

40. *Psychological distress among youth*

Percent of Youth that Exhibit Psychological Distress Based on Mental Health Inventory-5 (MHI-5)

Report Period	Age	Gender	Results	Lower Limit	Upper Limit	Notes
2004	8th grade	Both	6.9	5.6	8.6	Total respondents = 640. Baker, Morrow, Umatilla, Wallowa combined data
2006	8th grade	Both	2.0	0.5	8.3	Total respondents = 49. Based on 2005 survey. Schools did not participate in 2006.
2008	8th grade	Both		*	*	Total respondents = 0. Schools did not participate
2010	8th grade	Both	0.0	0.0	0.0	County rate is statistically significantly lower than State. Total respondents = 11.
2004	11th grade	Both	8.6	7.2	10.3	Total respondents = 574. Baker, Morrow, Umatilla, Wallowa combined data
2006	11th grade	Both	5.5	2.3	12.6	Total respondents = 42. Based on 2005 survey. Schools did not participate in 2006.
2008	11th grade	Both		*	*	Total respondents = 0. Schools did not participate
2010	11th grade	Both	6.5	3.9	10.7	Total respondents = 262. Baker, Union, Wallowa combined data

*Upper and lower limits for 95% confidence interval are not available.

Appendix D: Data Endnotes for Wallowa County

Uniform Crime Reports

The Oregon Uniform Crime Reporting program requires all law enforcement agencies to report crime statistics for purposes of meeting the Federal Bureau of Investigation data requirements. Any law enforcement agency discovering, receiving a report or investigating any offense occurring in its jurisdiction that would constitute a crime reports these facts to the Law Enforcement Data System monthly.

Crimes against persons include criminal offenses where the victim is present and the act is violent or threatening or has the potential of being physically harmful. Crimes against property include criminal offenses that involve taking something of value by theft or deception or the destruction of property. Domestic disturbances involve crimes such as assault or the fear of imminent serious physical injury between family or household members.

The endnotes that follow provide county results including the rate of crimes per 10,000 population and the total number of offenses reported. In some years data reporting was incomplete. When this is the case it is noted.

Rate of Crimes Against Persons per 10,000 Population

Report Period	Age	Gender	Rate	Lower Limit	Upper Limit	Notes
2000	All ages	Both	33.1	*	*	Total offenses reported = 24.
2001	All ages	Both	78.9	*	*	Total offenses reported = 56.
2002	All ages	Both	57.3	*	*	Total offenses reported = 41.
2003	All ages	Both	60.1	*	*	Total offenses reported = 43.
2004	All ages	Both	60.1	*	*	Total offenses reported = 43.
2005	All ages	Both	63.1	*	*	Total offenses reported = 45.
2006	All ages	Both	40.6	*	*	Total offenses reported = 29.
2007	All ages	Both	33.7	*	*	Total offenses reported = 24.

Rate of Property Crimes per 10,000 Population

Report Period	Age	Gender	Rate	Lower Limit	Upper Limit	Notes
---------------	-----	--------	------	-------------	-------------	-------

*Upper and lower limits for 95% confidence intervals are not available.

Appendix D: Data Endnotes for Wallowa County

Rate of Property Crimes per 10,000 Population

Report Period	Age	Gender	Rate	Lower Limit	Upper Limit	Notes
2000	All ages	Both	126.9	*	*	Total offenses reported = 92.
2001	All ages	Both	315.5	*	*	Total offenses reported = 224.
2002	All ages	Both	293.7	*	*	Total offenses reported = 210.
2003	All ages	Both	249.0	*	*	Total offenses reported = 178.
2004	All ages	Both	204.2	*	*	Total offenses reported = 146.
2005	All ages	Both	244.0	*	*	Total offenses reported = 174.
2006	All ages	Both	228.3	*	*	Total offenses reported = 163.
2007	All ages	Both	185.1	*	*	Total offenses reported = 132.

Rate of Domestic Disturbance Offenses per 10,000 Population

Report Period	Age	Gender	Rate	Lower Limit	Upper Limit	Notes
2002	All ages	Both	39.2	*	*	Total offenses reported = 28.
2003	All ages	Both	16.8	*	*	Total offenses reported = 12. Wallowa Sheriff's Office did not submit data
2004	All ages	Both	4.2	*	*	Total offenses reported = 3. Wallowa Sheriff's Office, Enterprise Police Dept did not submit data
2005	All ages	Both	4.2	*	*	Total offenses reported = 3. Wallowa Sheriff's Office, Enterprise Police Dept did not report data

*Upper and lower limits for 95% confidence intervals are not available.

Oregon Health Authority
Addictions and Mental Health Division
500 Summer Street NE
Salem, Oregon 97301

Wallowa County's Epidemiological Data on
Alcohol, Drugs and Mental Health
2000 to 2010

Publication date: February, 2011

Online location: This document can be accessed online at:
<http://www.oregon.gov/DHS/addiction/ad/main.shtml>

Project name: Oregon State Epidemiological Outcomes Workgroup

Funded by: Substance Abuse & Mental Health Services Administration's
Center for Substance Abuse Prevention

If you have questions about this document,
contact Geralyn Brennan at (503) 947-2319
or email geralyn.brennan@state.or.us

