

*DEPARTMENT OF HUMAN SERVICES
ADDICTIONS AND MENTAL HEALTH DIVISION*

**CHILDREN'S
MENTAL HEALTH
UTILIZATION
REPORT**

*APRIL 1, 2007
THROUGH
MARCH 31, 2008*



EXECUTIVE SUMMARY

The 2003 Oregon Legislative Assembly mandated significant changes for the Children's Mental Health System in Oregon. The *Children's Mental Health Utilization Report* describes how the Addictions and Mental Health Division (AMH) is implementing the required changes. This is the seventh report that covers the changes occurring within Children's Mental Health Services.

THIS REPORT COVERS THE FOLLOWING:

- Admissions to each of the various levels of care;
- Service Penetration Rate for Outpatient, PDTS, PRTS and Acute Care;
- Average Days of Service within PDTS and PRTS; Average Length of Stay within Acute Care, Sub-Acute Care, STS, SCIP, and SAIP;
- Delivery of Community-Based Services for various levels of care.

LIMITATIONS:

1. This report does not include tests of the statistical significance of apparent differences among providers or across time periods.
2. Data pulled is from the Decision Support/Surveillance and Utilization Review System (DSSURS) data system reflects only Medicaid eligible youth and the services delivered to the Medicaid eligible population. Data were also pulled, where indicated, from the Client Process Monitoring System (CPMS), and;
3. There is a 180-day lag between the times a service is delivered and the time the services are contractually required to be billed. Any services delivered fewer than 180-days prior to the date the report is published will not be included.
4. The enrollment and eligibility numbers refer to the number enrolled or eligible at any point within the specified quarter.

REPORT SCHEDULE:

Reports will be produced on a quarterly basis.

TABLE OF CONTENTS

Executive Summary	i
-------------------------	---

ENROLLMENT & ELIGIBILITY

Figure 1: Enrollment and Eligibility of Children Age 0-17	1
Table 1: Enrollment for Children Age 0-17 by MHO	1

ADMISSIONS

Table 2: Outpatient Admission Rate	2
Table 3: PDTS Admissions by Provider	2
Table 4: PDTS Admissions by MHO	4
Table 5: PRTS A&E Admissions by Provider	5
Table 6: PRTS A&E Admissions by MHO	5
Table 7: PRTS (non-A&E) Admissions by Provider	6
Table 8: PRTS (non-A&E) Admissions by MHO	6
Table 9: STS Admissions: FFS Data only	7
Table 10: Sub-Acute Admissions by MHO/FFS	7
Table 11: SCIP/SAIP Admissions by Provider	8
Table 12: Acute Care Admissions	8

PERCENTAGE RATES

Table 13: Outpatient Services Percentage Rate	9
Table 14: PDTS Services Percentage Rate	9
Table 15: PRTS - A & E Services Percentage	10
Table 16: PRTS – Non-A & E Services Percentage Rate	10
Table 17: Acute Care Services Percentage Rate	11

AVERAGE LENGTH OF STAY (LOS)/DAYS OF SERVICE

Table 18: PDTS Average Days of Service	11
Table 19: PDTS Providers Average Days of Service	12
Table 20: PRTS A&E Providers Average LOS	13
Table 21: PRTS A&E MHO Average LOS	13
Table 22: PRTS (non-A&E) Providers Average LOS	14
Table 23: PRTS (non-A&E) MHO Average LOS	15
Table 24: STS Average LOS	15
Table 25: Sub-Acute Services Average LOS	16
Table 26: SCIP/SAIP Services Average LOS	16
Table 27: Acute Care Services Average LOS	17

TABLE OF CONTENTS

(Continued)

READMISSION

Table 28:	Re-Admission to Same or Higher Level of Care within 30 days	18
Table 29:	Re-Admission to Same or Higher Level of Care within 180 days	18

DISTRIBUTION OF SERVICES

Figure 2:	Assessments.....	17
Figure 3:	Case Management	18
Figure 4:	Child & Family Team Meeting	18
Figure 5:	Crisis Services.....	19
Figure 6:	Family Therapy	19
Figure 7:	Group Therapy.....	20
Figure 8:	Individual Therapy.....	20
Figure 9:	Individual Therapy with Medication Management	21
Figure 10:	Level of Need Determination.....	21
Figure 11:	Medication Management.....	22
Figure 12:	Outpatient Therapy	22
Figure 13:	Respite Services.....	23
Figure 14:	Skills Training	23
Figure 15:	Wrap Around Services.....	24

GLOSSARIES

Glossary of Terms	25
Glossary of Service Categories.....	29

ELIGIBILITY & ENROLLMENT

CHILDREN AGE 0-17



ENROLLMENT AND ELIGIBILITY

The use of Medicaid enrollment/eligibility numbers will show the number of children who are eligible for services as well as those enrolled and able to obtain mental health services. The following enrollment/eligibility numbers refer to the number enrolled/eligible at any point within the specific quarter.

FIGURE 1: ENROLLMENT AND ELIGIBILITY OF CHILDREN AGE 0-17

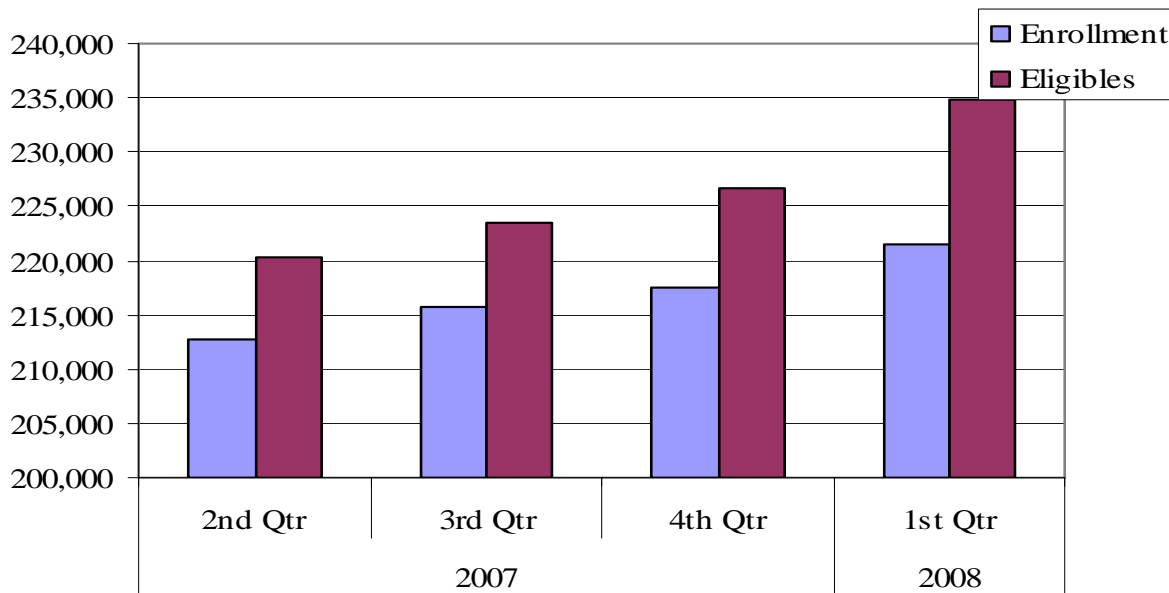


TABLE 1: ENROLLMENT FOR CHILDREN AGE 0-17 BY MHO: ALL QUARTERS

	2007			2008
MHO	2nd Qtr	3rd Qtr	4th Qtr	1st Qtr
ABHA	15,135	15,139	15,174	15,784
Clackamas	14,916	15,214	15,461	15,857
FamilyCare	6,196	6,367	6,397	6,388
GOBHI	18,102	18,245	18,267	18,691
JBH	34,148	34,656	34,926	35,650
LaneCare	18,773	19,083	19,162	19,442
MVBCN	45,234	46,040	46,672	47,531
Verity	39,080	39,421	39,923	40,281
Washington	21,098	21,578	21,601	21,814
Total	212,682	215,743	217,583	221,438
Eligibles	220,248	223,420	226,673	234,736
Fee-For-Service	7,566	7,677	9,090	13,298

ADMISSIONS

CHILDREN AGE 0-17



OUTPATIENT ADMISSIONS

For the purposes of this report, children age 0-17 are considered as having been “admitted” to an outpatient service if there has been no outpatient service in the previous 90 days.

TABLE 2: OUTPATIENT ADMISSION RATE AMONG CHILDREN AGE 0-17 PER 1,000 ENROLLEES: BY MHO AND QUARTER

MHO	2007			2008
	2 nd Qtr	3 rd Qtr	4 th Qtr	1 st Qtr
ABHA	19.7	15.7	17.2	12.7
Clackamas	19.7	17.2	18.6	19.9
FamilyCare	17.8	12.3	11.6	24.0
GOBHI	20.1	18.6	20.9	21.7
JBH	21.1	16.7	21.2	20.0
LaneCare	25.1	21.8	25.0	27.7
MVBCN	21.2	16.8	21.4	21.1
Verity	16.8	17.6	17.5	15.4
Washington	15.7	17.5	16.5	18.8
Total	19.8	17.4	19.7	19.7

N=Number of new admissions within quarter D=number of enrollees within quarter/1000

PSYCHIATRIC DAY TREATMENT SERVICES (PDTs) ADMISSIONS

For the purposes of this report, children age 0-17 are considered as having been “admitted” to PDTs service if there has been no PDTs service in the previous 30 days.

TABLE 3: PDTs ADMISSIONS AMONG CHILDREN AGE 0-17: BY PROVIDER AND PAYOR TYPE BY QUARTER

PDTs Provider/ Provider Number	MHO/ FFS ²	2007				MHO vs. FFS*	% of Total Year Admissions**
		2 nd Qtr	3 rd Qtr	4 th Qtr	1 st Qtr		
Albertina Kerr	MHO	10	8	5	6	97%	7.3%
	FFS	0	0	0	1	3.3%	0.3%
Cascade Child Tx Center	MHO	11	3	8	4	96%	6.5%
	FFS	0	1	0	0	3.7%	0.3%
Child Center	MHO	6	7	4	3	87.0%	5.0%
	FFS	0	2	0	1	13.0%	0.8%

*MHO vs. FFS: n=total of either MHO or FFS/d=total of PDTs Provider

** % of Total Admissions: n=total of either MHO or FFS/d=total of all PDTs Admissions

(Table continued on next page)

² Fee-For-Service (FFS): Eligible for OHP and NOT enrolled with an MHO (open card).

TABLE 3: PDTS ADMISSIONS AMONG CHILDREN AGE 0-17: BY PROVIDER AND PAYOR TYPE BY QUARTER (continued)

PDTS Provider/ Provider number	MHO/ FFS ¹	2007			2008	MHO vs. FFS*	% of Total Year Admissions**
		2 nd Qtr	3 rd Qtr	4 th Qtr	1 st Qtr		
Edgefield	MHO	12	20	9	18	100.0%	14.8%
	FFS	0	0	0	0	0.0%	0.0%
Family Friends	MHO	3	6	5	3	100%	4.3%
	FFS	0	0	0	0	0.0%	0.0%
Grande Ronde Child Center	MHO	1	1	1	0	75%	0.8%
	FFS	0	0	1	0	25.0%	0.3%
Klamath Child & Family	MHO	17	7	2	6	91.4%	8.0%
	FFS	1	0	1	1	8.6%	0.8%
Lifeworks (merge 10/23/07)	MHO	7	11	29	18	95.6%	16.3%
	FFS	0	1	1	1	4.4%	0.8%
Mid-Columbia CFC	MHO	2	4	5	3	87.5%	3.5%
	FFS	0	1	1	0	13%	0.5%
Morrison Center Hand to Hand	MHO	0	0	0	0	0%	0.0%
	FFS	1	0	0	1	100%	0.5%
OHSU (merge 10/23/07)	MHO	8	3	0	0	91.7%	2.8%
	FFS	1	0	0	0	8.3%	0.3%
Olalla Center (Lincoln Co)	MHO	3	1	1	0	71.4%	1.3%
	FFS	0	1	1	0	28.6%	0.5%
Old Mill School	MHO	1	1	0	2	100%	1.0%
	FFS	0	0	0	0	0.0%	0.0%
Pacific Child Center (closed 9/28/07)	MHO	3	0	0	0	100.0%	0.8%
	FFS	0	0	0	0	0.0%	0.0%
Parry Center	MHO	1	1	0	2	100.0%	1.0%
	FFS	0	0	0	0	0.0%	0.0%
Polk Adolescent Day Tx	MHO	1	0	7	4	92.3%	3.0%
	FFS	1	0	0	0	7.7%	0.3%
Poyama Land	MHO	1	3	8	4	100%	4.0%
	FFS	0	0	0	0	0.0%	0.0%

MHO vs. FFS: n=total of either MHO or FFS/d=total of PDTS Provider

% of Total Admissions: n=total of either MHO or FFS/d=total of all PDTS Admissions

(Table continued on next page)

¹ Fee-For-Service (FFS): Eligible for OHP and NOT enrolled with an MHO (open card).

TABLE 3: PDTS ADMISSIONS AMONG CHILDREN AGE 0-17: BY PROVIDER AND PAYOR TYPE BY QUARTER (continued)

PDTS Provider/ Provider number	MHO/ FFS ¹	2007			2008	MHO vs. FFS*	% of Total Year Admissions**
		2 nd Qtr	3 rd Qtr	4 th Qtr	1 st Qtr		
Riverside	MHO	14	5	9	3	86.1%	7.8%
	FFS	1	4	0	0	13.9%	1.3%
SOCSTC	MHO	7	4	6	6	100.0%	5.8%
	FFS	0	0	0	0	0.0%	0.0%
Totals	MHO	108	85	99	82	93.7%	
	FFS	5	10	5	5	6.3%	
	Grand	113	95	104	87	100.0%	

MHO vs. FFS: n=total of either MHO or FFS/d=total of PDTS Provider

% of Total Admissions: n=total of either MHO or FFS/d=total of all PDTS Admissions

TABLE 4: PDTS ADMISSIONS CHILDREN AGE 0-17: BY MHO AND QUARTER

MHO/FFS	2007			2008	Annual
	2 nd Qtr	3 rd Qtr	4 th Qtr	1 st Qtr	
ABHA	16	8	10	5	39
Clackamas	9	7	13	11	40
FamilyCare	1	2	0	0	3
GOBHI	1	2	1	0	4
JBH	44	22	22	17	105
LaneCare	5	6	4	3	18
MVBCN	2	3	14	10	29
Verity	17	26	13	23	79
Washington	13	9	22	13	57
Total	108	85	99	82	374
FFS	5	10	5	5	25

¹ Fee-For-Service (FFS): Eligible for OHP and NOT enrolled with an MHO (open card).

PSYCHIATRIC RESIDENTIAL TREATMENT SERVICES (PRTS) AND ASSESSMENT & EVALUATION (A&E) ADMISSIONS

For the purposes of this report, children age 0-17 are considered as having been “admitted” to A&E and/or PRTS service if there has been a break in service for 1 day or more. These data have been pulled from the Client Process Monitoring System (CPMS) and DSSURS enrollment data for the MHO information.

TABLE 5: PRTS A&E ADMISSIONS: CHILDREN AGE 0-17 BY PROVIDER

Provider		2007			2008
		2 nd Qtr	3 rd Qtr	4 th Qtr	1 st Qtr
Children’s Farm Home	MHO	24	29	29	27
	FFS	5	3	2	3
Christie School	MHO	27	19	5	15
	FFS	3	1	1	4
Pendleton Academy	MHO	16	12	4	2
	FFS	2	2	0	0
SOASTC	MHO	14	5	1	4
	FFS	0	0	2	2
Total	MHO	81	65	39	48
	FFS	10	6	5	9

Data Source: CPMS/DSSURS Data Pulled: 10/3/08

TABLE 6: PRTS A&E ADMISSIONS: CHILDREN AGE 0-17 BY MHO

MHO	2007			2008
	2 nd Qtr	3 rd Qtr	4 th Qtr	1 st Qtr
ABHA	14	10	12	5
Clackamas	3	1	1	0
FamilyCare	4	4	4	1
GOBHI	9	9	4	1
JBH	23	18	3	19
LaneCare	4	6	1	8
MVBCN	11	5	10	8
Verity	10	12	4	5
Washington	3	0	0	1
Total	81	65	39	48
FFS	10	6	5	9

Data Source: CPMS/DSSURS Data Pulled: 10/3/08

TABLE 7: PRTS (NON-A&E) ADMISSIONS: CHILDREN AGE 0-17 BY PROVIDER

Provider		2007			2008
		2 nd Qtr	3 rd Qtr	4 th Qtr	1 st Qtr
Children's Farm Home	MHO	17	31	33	41
	FFS	6	2	1	11
Christie School	MHO	23	31	22	28
	FFS	3	0	3	9
Edgefield Children's Ctr	MHO	4	0	2	0
	FFS	0	0	0	0
Jasper Mtn	MHO	19	6	6	8
	FFS	2	3	0	0
Kerr Youth & Family	MHO	13	11	0	0
	FFS	0	0	0	0
Parry Center	MHO	21	21	25	14
	FFS	1	3	3	2
Pendleton Academy	MHO	11	6	9	12
	FFS	1	3	0	0
Trillium Central Or	MHO	2	0	0	0
	FFS	0	0	0	0
Total	MHO	110	106	97	103
	FFS	13	11	7	22

Data Source: CPMS/DSSURS Data Pulled: 10/3/08

TABLE 8: PRTS (NON-A&E) ADMISSIONS: CHILDREN AGE 0-17 BY MHO

MHO	2007			2008
	2 nd Qtr	3 rd Qtr	4 th Qtr	1 st Qtr
ABHA	11	6	12	14
Clackamas	6	3	7	5
FamilyCare	1	3	2	0
GOBHI	6	12	10	10
JBH	13	9	8	7
LaneCare	20	16	14	12
MVBCN	14	12	12	21
Verity	26	33	24	22
Washington	13	12	8	12
Total	110	106	97	103
FFS	13	11	7	22

Data Source: DSSURS & CPMS
 DSSURS & CPMS Data Pulled: 7/8/08 & 8/12/08

STABILIZATION TRANSITION SERVICES (STS) ADMISSIONS

TABLE 9: STS ADMISSIONS FOR CHILDREN AGE 0-17: FFS DATA ONLY

STS Provider (FFS only)	2007			2008	% of Total Year STS Admissions
	2 nd Qtr	3 rd Qtr	4 th Qtr	1 st Qtr	
Children's Farm Home	4	2	7	1	77.8%
Christie School	0	2	1	0	16.7%
SOASTC	0	0	1	0	5.6%
Totals	4	4	9	1	100.0%

n=STS Provider Admissions/d=Total STS Admission

SUB-ACUTE SERVICES ADMISSIONS

The Procedure code to bill for "sub-acute services", (H2013) is utilized by a few youth and family providers. Any increases in numbers or additional providers listed may be due to billing providers utilizing the H2013 procedure code when they are not authorized.

TABLE 10: SUB-ACUTE ADMISSIONS FOR CHILDREN AGE 0-17: BY MHO/FFS

Providers	MHO/FFS ¹	2007			2008	MHO vs. FFS	% of Total Year
		2 nd Qtr	3 rd Qtr	4 th Qtr	1 st Qtr		
Albertina Kerr	MHO	40	43	38	10	82.9%	49.1%
	FFS	12	13	2	0	17.1%	10.1%
Children's Farm Home	MHO	1	2	8	2	92.9%	4.9%
	FFS	1	0	0	0	7.1%	0.4%
Christie Care	MHO	4	9	7	0	58.8%	7.5%
	FFS	6	2	5	1	41.2%	5.2%
Jasper Mountain	MHO	13	16	18	5	100%	19.5%
	FFS	0	0	0	0	0.0%	0.0%
Parry Center	MHO	0	0	0	0	0.0%	0.0%
	FFS	4	2	2	0	100.0%	3.0%
Trillium Central Oregon	MHO	0	1	0	0	100%	0.4%
	FFS	0	0	0	0	0.0%	0.0%
Total	MHO	58	71	71	17	81.3%	
	FFS	23	17	9	1	18.7%	
	GRAND	81	88	80	18	100%	

n=Sub-Acute Provider Admissions/d=Total Sub-Acute Admission

¹ Fee-For-Service (FFS): Eligible for OHP and NOT enrolled with an MHO (open card)

SECURE CHILDREN INPATIENT PROGRAM (SCIP)/ SECURE ADOLESCENT INPATIENT PROGRAM (SAIP) ADMISSIONS

TABLE 11: SCIP/SAIP ADMISSIONS FOR CHILDREN AGE 0-17 BY PROVIDER

Program	2007			2008
	2 nd Qtr	3 rd Qtr	4 th Qtr	1 st Qtr
SCIP	3	3	0	3

Program	2007			2008
	2 nd Qtr	3 rd Qtr	4 th Qtr	1 st Qtr
SAIP	16	8	17	13

Data Source: CPMS 2007/08

Data Pulled: 11/19/08

ACUTE CARE ADMISSIONS FOR MENTAL HEALTH

TABLE 12: ACUTE CARE ADMISSIONS FOR CHILDREN AGE 0-17 PER 1,000 ENROLLED

MHO	2007			2008	Annual
	2 nd Qtr	3 rd Qtr	4 th Qtr	1 st Qtr	
ABHA	0.07	0.07	0.26	0.19	0.15
Clackamas	0.74	0.59	0.32	0.32	0.49
FamilyCare	0.32	0.16	0.00	0.00	0.12
GOBHI	0.17	0.22	0.11	0.05	0.14
JBH	0.56	0.35	0.03	0.36	0.32
LaneCare	0.32	0.10	0.10	0.05	0.14
MVBCN	0.13	0.28	0.21	0.17	0.20
Verity	1.02	0.71	0.65	0.72	0.78
Washington	0.38	0.46	0.46	0.69	0.50
Total	0.45	0.37	0.28	0.34	0.36

n=Acute admissions/d=Enrolled Children per 1,000

Data pulled: 9/8/08 for Acute Care only

*SERVICE
PERCENTAGE
RATES*

FOR CHILDREN AGE 0-17



OUTPATIENT SERVICES

Service percentage rates are a way to measure the demand for service and/or ability to access services. The service percentage rate is the number of children receiving service within a time period out of the number of children with any enrollment during that time period (expressed as a %). See the Glossary of Terms at the end of this report for further information.

TABLE 13: OUTPATIENT SERVICES PERCENTAGE RATE FOR CHILDREN AGE 0-17

MHO	2007			2008
	2 nd Qtr	3 rd Qtr	4 th Qtr	1 st Qtr
ABHA	5.2%	4.4%	4.5%	3.7%
Clackamas	5.3%	4.9%	4.9%	4.5%
FamilyCare	4.3%	3.8%	3.3%	3.7%
GOBHI	5.4%	4.9%	5.3%	5.0%
JBH	5.8%	4.8%	5.4%	5.2%
LaneCare	8.8%	7.9%	8.3%	8.3%
MVBCN	4.9%	4.5%	4.7%	4.6%
Verity	5.9%	5.8%	5.7%	5.3%
Washington	4.1%	4.2%	4.2%	4.4%
Total	5.6%	5.1%	5.3%	5.1%

n=Served Children/d=Enrolled Children

TABLE 14: PDTS SERVICES PERCENTAGE RATE FOR CHILDREN AGE 0-17

MHO	2007			2008
	2 nd Qtr	3 rd Qtr	4 th Qtr	1 st Qtr
ABHA	0.11%	0.05%	0.07%	0.03%
Clackamas	0.06%	0.05%	0.08%	0.07%
FamilyCare	0.02%	0.03%	0.00%	0.00%
GOBHI	0.01%	0.01%	0.01%	0.00%
JBH	0.13%	0.06%	0.06%	0.05%
LaneCare	0.03%	0.03%	0.02%	0.02%
MVBCN	0.00%	0.01%	0.03%	0.02%
Verity	0.04%	0.07%	0.03%	0.06%
Washington	0.06%	0.04%	0.10%	0.06%
Total	0.05%	0.04%	0.05%	0.04%

n= children receiving PDTS Services/d=Enrolled Children

TABLE 15: PRTS - A & E SERVICES PERCENTAGE RATE CHILDREN AGE 0-17: BY MHO AND QUARTER

MHO	2007			2008
	2nd Qtr	3rd Qtr	4th Qtr	1st Qtr
ABHA	0.09%	0.07%	0.08%	0.03%
Clackamas	0.02%	0.01%	0.01%	0.00%
FamilyCare	0.06%	0.06%	0.06%	0.02%
GOBHI	0.05%	0.05%	0.02%	0.01%
JBH	0.07%	0.05%	0.01%	0.05%
LaneCare	0.02%	0.03%	0.01%	0.04%
MVBCN	0.02%	0.01%	0.02%	0.02%
Verity	0.03%	0.03%	0.01%	0.01%
Washington	0.01%	0.00%	0.00%	0.00%
Total	0.04%	0.03%	0.02%	0.02%
FFS	0.13%	0.08%	0.06%	0.07%

TABLE 16: PRTS – NON-A & E SERVICES PERCENTAGE RATE CHILDREN AGE 0-17: BY MHO AND QUARTER

MHO	2007			2008
	2nd Qtr	3rd Qtr	4th Qtr	1st Qtr
ABHA	0.07%	0.04%	0.08%	0.09%
Clackamas	0.04%	0.02%	0.05%	0.03%
FamilyCare	0.02%	0.05%	0.03%	0.00%
GOBHI	0.03%	0.07%	0.05%	0.05%
JBH	0.04%	0.03%	0.02%	0.02%
LaneCare	0.11%	0.08%	0.07%	0.06%
MVBCN	0.03%	0.03%	0.03%	0.04%
Verity	0.07%	0.08%	0.06%	0.05%
Washington	0.06%	0.06%	0.04%	0.06%
Total	0.05%	0.05%	0.04%	0.05%
FFS	0.17%	0.14%	0.08%	0.17%

TABLE 17: ACUTE CARE SERVICES PERCENTAGE RATE CHILDREN AGE 0-17: BY MHO AND QUARTER

	2007			2008
	2 nd Qtr	3 rd Qtr	4 th Qtr	1 st Qtr
ABHA	0.01%	0.01%	0.03%	0.02%
Clackamas	0.07%	0.06%	0.03%	0.03%
FamilyCare	0.03%	0.02%	0.00%	0.00%
GOBHI	0.02%	0.02%	0.01%	0.01%
JBH	0.06%	0.03%	0.00%	0.04%
LaneCare	0.03%	0.01%	0.01%	0.01%
MVBCN	0.01%	0.03%	0.02%	0.02%
Verity	0.10%	0.07%	0.07%	0.07%
Washington	0.04%	0.05%	0.05%	0.07%
Total	0.05%	0.04%	0.03%	0.03%

n=Acute admissions/d=Enrolled Children

***DAYS OF SERVICE
& LENGTH OF
STAY***

**FOR
CHILDREN AGE 0-17**



PSYCHIATRIC DAY TREATMENT SERVICES (PDTs)

An episode of PDTs care is said to have ended when 30 days have passed since the last PDTs service. The total days of service within an episode of PDTs care includes only those days that the child receives day treatment. See the Glossary of Terms located at the end of this report.

TABLE 18: AVERAGE DAYS OF SERVICE WITHIN EPISODES OF PDTs CARE ENDING IN 2007/2008: BY PDTs PROVIDER (KEY: N/A=NO DISCHARGES)

PDTs Provider	MHO/ FFS ¹	April 2007 through March 2008				Annual Avg
		Apr 07 thru Sep 07		Oct 07 thru Mar 08		
		# Episodes Ending	Avg Days	# Episodes Ending	Avg Days	
Albertina Kerr	MHO	12	53.2	16	73.5	64.8
	FFS	0	N/A	1	22.0	22.0
Cascade Child Tx Center	MHO	7	60.1	8	91.6	76.9
	FFS	1	203.0	0	N/A	203.0
Child Center	MHO	13	133.7	11	208.5	168.0
	FFS	1	162.0	1	113.0	137.5
Edgefield	MHO	27	102.8	28	137.9	120.7
	FFS	0	N/A	0	N/A	N/A
Family Friends	MHO	10	105.2	8	142.3	121.7
	FFS	0	N/A	0	N/A	N/A
Grande Ronde Child Center	MHO	5	120.4	3	142.3	128.6
	FFS	1	122.0	0	N/A	122.0
Klamath Child & Family	MHO	23	105.3	8	197.6	129.2
	FFS	1	97.0	2	87.5	90.7
LifeWorks	MHO	19	96.5	32	75.1	83.1
	FFS	1	16.0	2	22.5	20.3
Mid-Columbia CFC	MHO	7	83.1	6	151.3	114.6
	FFS	3	61.3	0	N/A	61.3
Morrison Hand to Hand - Tribal	MHO	0	N/A	0	N/A	N/A
	FFS	2	133.5	0	N/A	133.5
OHSU	MHO	24	111.9	0	N/A	111.9
	FFS	2	101.0	0	N/A	101.0
Olalla Center (Lincoln Co)	MHO	2	130.0	2	270.5	200.3
	FFS	1	115.0	1	16.0	65.5
Old Mill School	MHO	3	262.7	2	94.5	195.4
	FFS	0	N/A	0	N/A	N/A

(Table continued on next page.)

¹ Fee-For-Service (FFS): Eligible for OHP and NOT enrolled with an MHO (open card)

TABLE 18: AVERAGE DAYS OF SERVICE WITHIN EPISODES OF PDTs (Continued)

PDTs Provider	MHO/ FFS ¹	April 2007 through March 2008				Annual Avg LOS
		Apr 07 thru Sep 07		Apr 07 thru Sep 07		
		# Episodes Ending	Avg Days	# Episodes Ending	Avg Days	
Pacific Child Center	MHO	13	112.0	0	N/A	112.0
	FFS	2	168.0	0	N/A	168.0
Parry Center	MHO	4	84.5	2	15.0	61.3
	FFS	0	N/A	0	N/A	N/A
Polk Adolescent Day Tx	MHO	2	113.0	13	116.5	116.1
	FFS	0	N/A	0	N/A	N/A
Poyama Land	MHO	8	137.4	16	132.5	134.1
	FFS	0	N/A	0	N/A	N/A
Riverside Adolescent	MHO	18	61.8	12	120.2	85.1
	FFS	5	74.8	1	106.0	80.0
SOCSTC	MHO	11	85.5	6	92.8	88.1
	FFS	0	N/A	0	N/A	N/A
Total Avg Days of Service	MHO	208	96.3	173	117.7	106.0
	FFS	20	103.9	8	59.6	91.3

N/A=no discharges

TABLE 19: PDTs PROVIDERS AVERAGE DAYS OF SERVICE FOR CHILDREN 0-17

	April 2007 through March 2008				Annual Avg LOS
	Apr 07 thru Sep 07		Apr 07 thru Sep 07		
	# Episodes Ending	Avg Days	# Episodes Ending	Avg Days	
ABHA	13	116.8	12	133.5	124.8
Clackamas	19	86.2	23	95.3	91.2
FamilyCare	3	55.7	2	171.0	101.8
GOBHI	6	125.3	4	112.0	120.0
JBH	75	93.1	33	137.0	106.5
LaneCare	12	140.7	11	208.5	173.1
MVBCN	10	132.5	29	116.4	120.6
Verity	33	90.2	40	124.4	108.9
Washington	37	106.0	19	61.2	90.8
Total	208	100.8	173	120.9	109.9
FFS	20	103.9	8	59.6	91.3

¹ Fee-For-Service (FFS): Eligible for OHP and NOT enrolled with an MHO (open card)

TABLE 20: PRTS A&E PROVIDERS AVERAGE LENGTH OF STAY FOR CHILDREN 0-17

These data have been pulled from the Client Process Monitoring System (CPMS) and DSSURS enrollment data for the MHO information.

Provider	MHO/ FFS	2007						2008		Annual	
		2nd Qtr		3rd Qtr		4th Qtr		1st Qtr		Annual Discharges	Annual Avg LOS
		Discharges	Avg LOS	Discharges	Avg LOS	Discharges	Avg LOS	Discharges	Avg LOS		
Children' Farm Home	MHO	31	93.2	21	71.4	35	61.9	33	49.4	120	68.2
	FFS	8	82.5	5	52.8	1	93.0	4	59.3	18	69.7
Christie School	MHO	41	56.4	19	71.3	14	65.0	13	64.3	87	62.2
	FFS	3	91.7	2	66.0	2	46.5	3	46.3	10	63.9
Pendleton Academy	MHO	7	78.6	17	51.9	0	0.0	10	201.6	34	101.4
	FFS	5	76.6	4	71.3	1	275.0	0	0.0	10	94.3
SOASTC	MHO	14	57.9	9	74.1	4	84.3	3	52.0	30	65.7
	FFS	3	84.0	0	0.0	0	0.0	3	61.3	6	72.7
Total	MHO	93	70.6	66	66.7	53	64.4	59	78.6	271	70.2
	FFS	19	82.6	11	61.9	4	115.3	10	56.0	44	74.4

Data Source: CPMS/DSSURS 2007/08 Data Pulled: 10/3/08

TABLE 21: PRTS A&E MHO AVERAGE LENGTH OF STAY FOR CHILDREN 0-17

MHO	2007						2008		Annual	
	2nd Qtr		3rd Qtr		4th Qtr		1st Qtr		Annual D/C	Annual Avg LOS
	D/C	Avg LOS	D/C	Avg LOS	D/C	Avg LOS	D/C	Avg LOS		
ABHA	8	57.5	9	82.4	13	44.5	15	134.2	45	84.3
Clackamas	4	53.0	1	84.0	1	91.0	1	102.0	7	69.9
FamilyCare	6	99.7	5	31.6	3	34.0	1	91.0	15	63.3
GOBHI	8	67.1	12	39.8	3	86.3	5	89.6	28	61.5
JBH	32	78.1	16	86.9	18	77.0	9	69.7	75	78.7
LaneCare	4	93.0	5	43.4	4	112.3	4	43.8	17	71.4
MVBCN	12	57.6	11	84.1	6	47.2	13	45.1	42	59.2
Verity	14	57.9	6	35.8	5	53.0	10	59.5	35	53.9
Washington	5	77.2	1	196.0	0	0.0	1	0.0	7	83.1
Total	112	58.6	77	57.2	57	59.9	69	67.2	315	60.4
FFS	19	82.6	11	61.9	4	115.3	10	56.0	44	74.4

Data Source: CPMS/DSSURS 2007/08 Data Pulled: 10/3/08

TABLE 22: PRTS (NON-A&E) PROVIDERS AVERAGE LENGTH OF STAY FOR CHILDREN 0-17

Provider	MHO/FFS	2007						2008		Annual	
		2 nd Qtr		3 rd Qtr		4 th Qtr		1 st Qtr		Annual Discharges	Annual Avg LOS
		Discharges	Avg LOS	Discharges	Avg LOS	Discharges	Avg LOS	Discharges	Avg LOS		
Children's Farm Home	MHO	17	278.4	22	46.5	34	55.5	28	74.7	101	96.4
	FFS	4	44.8	4	92.8	0	0.0	5	59.0	13	65.0
Christie School	MHO	26	121.3	20	196.3	34	115.0	29	106.7	109	129.2
	FFS	3	54.7	2	102.0	1	24.0	1	109.0	7	71.6
Edgefield Children's Cntr	MHO	0	0.0	3	103.0	0	0.0	2	251.0	5	162.2
	FFS	0	0.0	0	0.0	0	0.0	0	0.0	0	0.0
Jasper Mtn	MHO	23	121.0	25	173.4	4	323.5	14	139.9	66	157.1
	FFS	1	88.0	2	53.0	0	0.0	3	278.3	6	171.5
Kerr Youth & Family	MHO	23	99.6	17	131.2	8	104.5	0	0.0	48	111.6
	FFS	1	6.0	0	0.0	0	0.0	0	0.0	1	6.0
Parry Center	MHO	20	115.6	27	113.6	25	88.3	26	87.1	98	100.5
	FFS	1	126.0	2	110.0	1	112.0	6	150.3	10	136.0
Pendleton Academy	MHO	8	326.1	21	301.4	5	64.4	22	116.7	56	211.2
	FFS	0	0.0	5	221.4	1	90.0	1	238.0	7	205.0
Trillium Central Or	MHO	9	103.8	2	107.0	0	0.0	0	0.0	11	104.4
	FFS	0	0.0	0	0.0	0	0.0	0	0.0	0	0.0
Total	MHO	126	149.3	137	156.5	110	95.1	121	103.1	494	127.9
	FFS	10	56.3	15	133.9	3	75.3	16	148.7	44	117.6

Data Source: CPMS/DSSURS 2007/08

Data Pulled: 10/3/08

TABLE 23: PRTS (NON-A&E) MHO AVERAGE LENGTH OF STAY FOR CHILDREN 0-17

MHO	2007						2008		Annual	
	2nd Qtr		3rd Qtr		4th Qtr		1st Qtr			
	D/C	Avg LOS	D/C	Avg LOS	D/C	Avg LOS	D/C	Avg LOS	Annual D/C	Annual Avg LOS
ABHA	15	116.0	17	136.5	15	72.8	11	55.2	58	99.3
Clackamas	3	57.3	13	331.8	7	55.1	5	69.8	28	186.4
FamilyCare	1	64.0	2	385.0	5	155.8	1	70.0	9	187.0
GOBHI	5	458.0	12	236.1	8	103.3	20	87.7	45	171.2
JBH	19	166.5	21	180.3	4	110.8	10	149.9	54	164.7
LaneCare	26	103.5	22	87.4	14	52.0	15	140.7	77	96.8
MVBCN	10	185.0	10	193.4	18	201.6	14	97.3	52	168.7
Verity	34	140.2	29	76.3	31	54.8	23	80.2	117	89.9
Washington	13	160.1	11	122.1	8	109.5	22	131.0	54	133.0
Total	126	149.3	137	156.5	110	95.1	121	103.1	494	127.9
FFS	10	56.3	15	133.9	3	75.3	16	148.7	44	117.6

**STABILIZATION TRANSITION SERVICES (STS)
LENGTH OF STAY (LOS)**

TABLE 24: STS AVERAGE LOS FOR CHILDREN 0-17

STS Provider	2007						2008		Annual Avg LOS
	2nd Qtr		3rd Qtr		4th Qtr		1st Qtr		
	D/C	Avg LOS	D/C	Avg LOS	D/C	Avg LOS	D/C	Avg LOS	
Children’s Farm Home	1	38.0	4	67.5	8	40.9	1	28.0	47.4
Christie School	0	N/A	0	N/A	2	54.0	1	121.0	76.3
Pendleton Academies	0	N/A	0	N/A	0	N/A	1	49.0	49.0
SOASTC	1	38.0	4	67.5	10	43.5	3	66.0	52.3
Totals	1	38.0	4	67.5	8	40.9	1	28.0	47.4

NA=No Discharges
D/C=Discharges

SUB-ACUTE SERVICES

TABLE 25: SUB-ACUTE SERVICES AVERAGE LOS FOR CHILDREN 0-17

Sub-Acute Providers	MHO/ FFS ¹	2007						2008		Annual Avg LOS
		2 nd Qtr		3 rd Qtr		4 th Qtr		1 st Qtr		
		D/C	Avg LOS	D/C	Avg LOS	D/C	Avg LOS	D/C	Avg LOS	
Albertina Kerr	MHO	44	13.1	42	8.4	38	7.7	15	12.4	10.1
	FFS	13	15.3	11	19.2	5	16.6	0	N/A	17.0
Children’s Farm Home	MHO	0	N/A	3	28.3	6	20.2	4	26.0	23.8
	FFS	2	35.0	0	N/A	0	N/A	0	N/A	35.0
Christie Care	MHO	3	19.0	10	10.3	6	10.0	1	47.0	13.4
	FFS	6	16.0	2	1.5	5	13.6	1	13.0	12.9
Jasper Mountain	MHO	13	9.9	15	5.1	18	2.8	7	7.7	5.9
	FFS	0	N/A	0	N/A	0	N/A	0	N/A	N/A
Parry Center	MHO	1	15.0	0	N/A	0	N/A	0	N/A	15.0
	FFS	3	13.7	3	25.0	1	4.0	1	31.0	18.9
Trillium Central Oregon	MHO	0	N/A	1	0.0	0	N/A	0	N/A	0.0
	FFS	0	N/A	0	N/A	0	N/A	0	N/A	N/A
Total	MHO	61	12.8	71	8.7	68	7.7	27	14.5	10.2
	FFS	24	16.9	16	18.1	11	14.1	2	22.0	16.9

NA=no discharges D/C=discharges

SECURE CHILDREN INPATIENT PROGRAM (SCIP)/ SECURE ADOLESCENT INPATIENT PROGRAM (SAIP) ADMISSIONS

TABLE 26: SCIP/SAIP SERVICES AVERAGE LOS FOR CHILDREN 0-17

	2007						2008		Annual Avg LOS
	2 nd Qtr		3 rd Qtr		4 th Qtr		1 st Qtr		
	D/C	Avg LOS	D/C	Avg LOS	D/C	Avg LOS	D/C	Avg LOS	
SCIP	5	347.8	5	127.6	3	356.3	1	246.0	271.6
SAIP	20	81.1	10	118.6	12	117.6	19	130.6	97.9

Data Source: CPMS n=total days/d=discharges
Date Pulled: 11/19/08 D/C=discharges N/A: no discharges

¹ Fee-For-Service (FFS): Eligible for OHP and NOT enrolled with an MHO (open card)

ACUTE CARE SERVICES

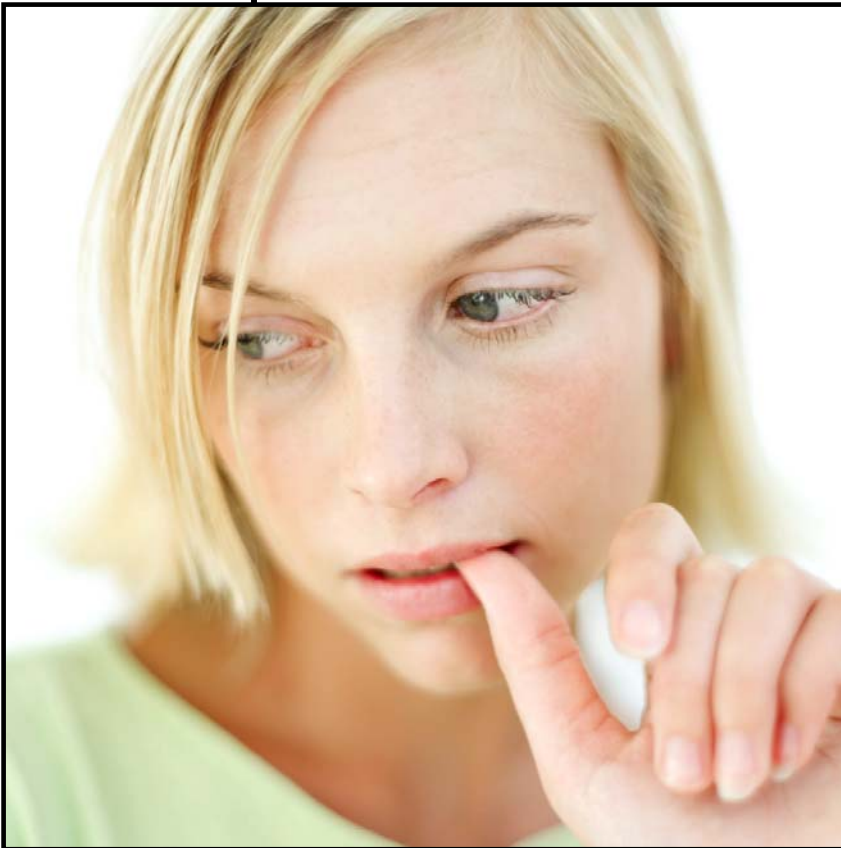
TABLE 27: ACUTE CARE SERVICES AVERAGE LOS

	2007						2008		Annual Avg LOS
	2 nd Qtr		3 rd Qtr		4 th Qtr		1 st Qtr		
MHO Contractors	D/C	Avg LOS	D/C	Avg LOS	D/C	Avg LOS	D/C	Avg LOS	
ABHA	2	6.0	1	13.0	4	1.8	3	6.0	5.0
Clackamas	10	8.2	9	9.3	5	6.2	4	8.5	8.3
FamilyCare	2	5.5	1	8.0	0	0.0	0	0.0	6.3
GOBHI	3	7.7	3	6.0	3	11.0	1	25.0	9.9
JBH	16	4.8	16	13.6	1	7.0	13	8.5	9.0
LaneCare	6	6.7	2	11.5	2	7.0	0	0.0	7.7
MVBCN	6	8.3	13	10.0	8	8.6	10	9.8	9.4
Verity	44	7.5	25	8.0	29	8.2	26	7.3	7.7
Washington	8	9.8	10	6.9	11	8.4	15	7.3	7.9
Total	97	7.2	80	9.5	63	7.8	72	8.1	8.2

NA=no discharges D/C=discharges N=total days/D=discharges
 Data pulled: 9/8/08 for Acute Care only

***RE-ADMISSION
TO SERVICES***

**FOR
CHILDREN AGE 0-17**



**TABLE 28: RE-ADMISSION TO SAME OR HIGHER LEVEL OF CARE
WITHIN 30 DAYS**

	2007						2008	
	2nd Qtr		3rd Qtr		4th Qtr		1st Qtr	
	Actual	Rate	Actual	Rate	Actual	Rate	Actual	Rate
PRTS/A&E	1	0.40%	1	0.44%	2	1.18%	1	0.49%
STS	0	0.00%	0	0.00%	0	0.00%	0	0.00%
Sub-Acute	4	4.71%	4	4.60%	6	7.59%	4	13.79%
Acute	9	9.28%	5	6.25%	9	14.29%	4	5.56%
SCIP/SAIP	0	0.00%	0	0.00%	0	0.00%	0	0.00%
Total	14	3.07%	10	2.41%	17	5.04%	9	2.73%

**TABLE 29: RE-ADMISSION TO SAME OR HIGHER LEVEL OF CARE
WITHIN 180 DAYS**

	2007						2008	
	2nd Qtr		3rd Qtr		4th Qtr		1st Qtr	
	Actual	Rate	Actual	Rate	Actual	Rate	Actual	Rate
PRTS/A&E	18	7.3%	15	6.6%	19	11.2%	15	7.3%
STS	1	100%	0	0.0%	4	40.0%	0	0.0%
Sub-Acute	20	23.5%	27	31.0%	24	30.4%	17	58.6%
Acute	19	19.6%	22	27.5%	30	47.6%	14	19.4%
SCIP/SAIP	4	16.0%	3	20.0%	6	40.0%	3	15.0%
Total	62	13.6%	67	16.1%	83	24.6%	49	14.8%

***DISTRIBUTION OF
COMMUNITY
BASED SERVICES***

**FOR
CHILDREN AGE 0-17**



The Distribution of Services formerly looked at the number of encounters (i.e. the number of times a member received a particular service) rather than the “units” of service (i.e. 15 minutes, 30 minutes, or 1 day) due to the unequivocal units across the different types of service. In this report, however, the distribution of services will be reflected as “units” of service with the equal application of one (1) unit of service equaling 15 minutes. Thus 1 day of service will equal 96 units; 1 month of service will equal 2880 units of service. See the Service Category Glossary for the specific number of units for each of the procedure codes.

For a listing of the Mental Health Medicaid Procedure Codes and Reimbursement Rates, please click on the following link:

<http://www.oregon.gov/DHS/mentalhealth/publications/main.shtml> then scroll down to find the current list of codes.

FIGURE 2: ASSESSMENTS BY MHO: 1ST QTR 2008 – CHILDREN 0-17

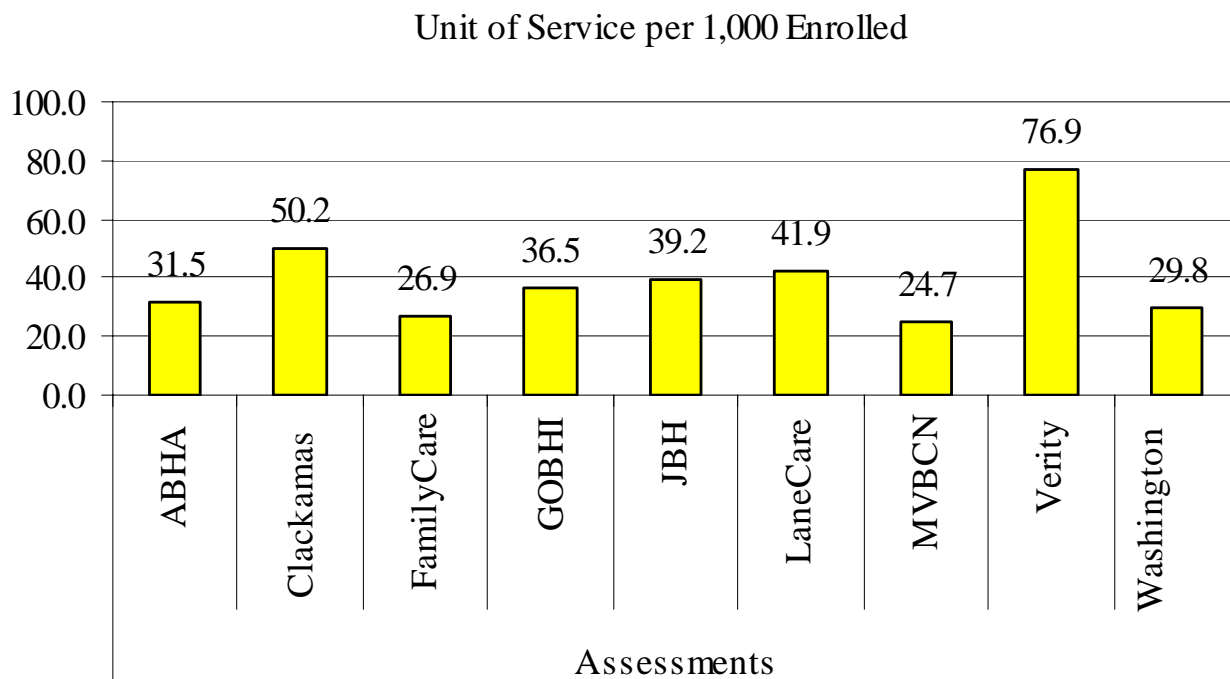


FIGURE 3: CASE MANAGEMENT BY MHO: 1ST QTR 2008 – CHILDREN 0-17

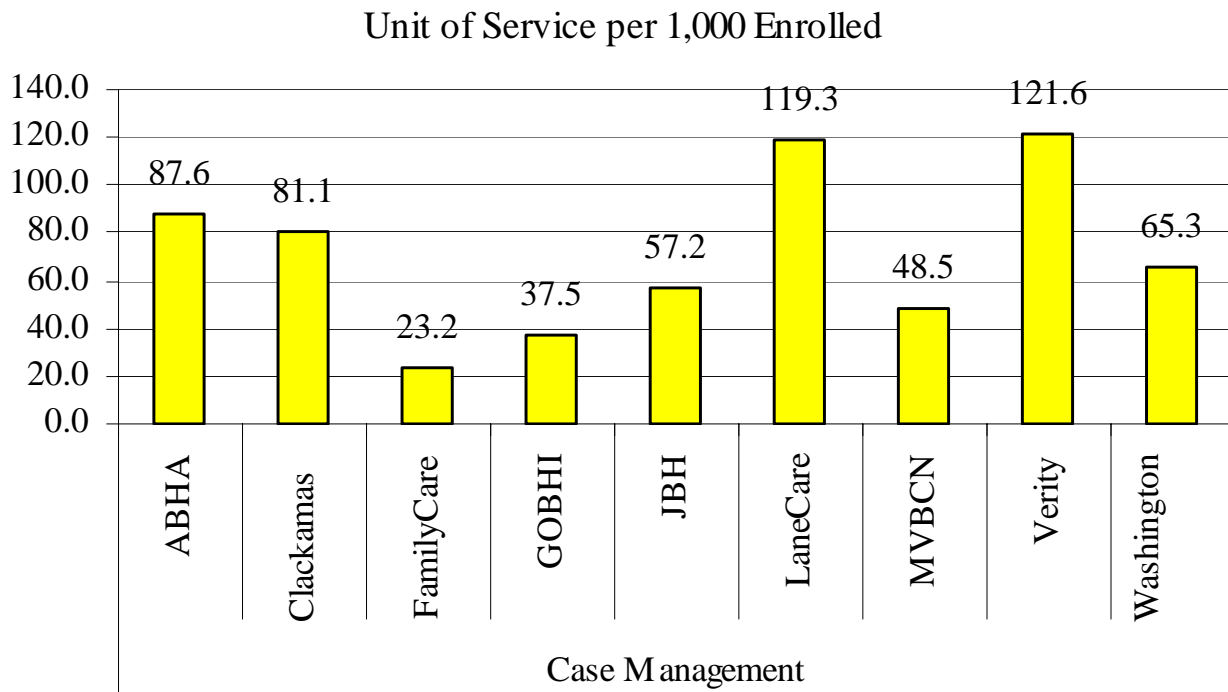


FIGURE 4: CHILD & FAMILY TEAM MEETING BY MHO: 1ST QTR 2008 – CHILDREN 0-17

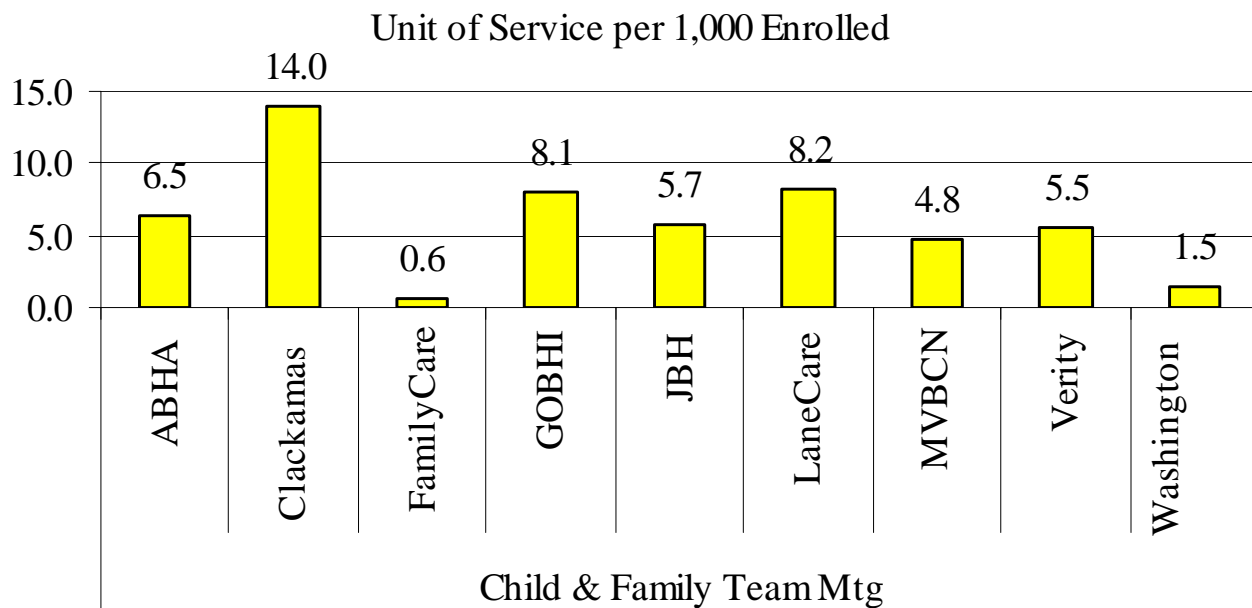


FIGURE 5: CRISIS SERVICES BY MHO: 1ST QTR 2008 – CHILDREN 0-17

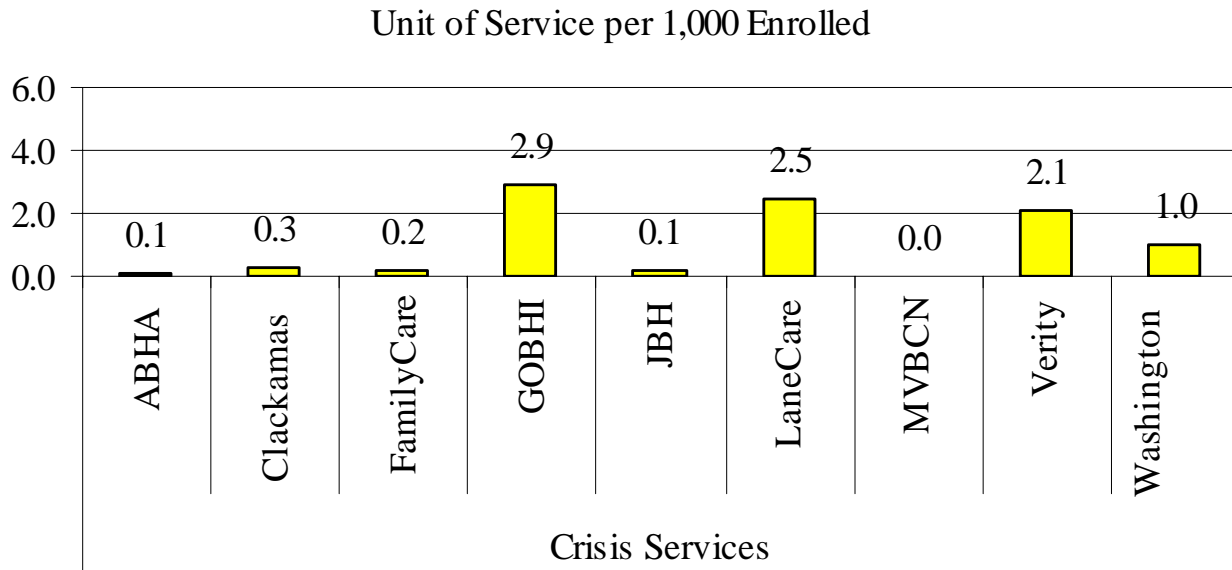


FIGURE 6: FAMILY THERAPY BY MHO: 1ST QTR 2008 – CHILDREN 0-17

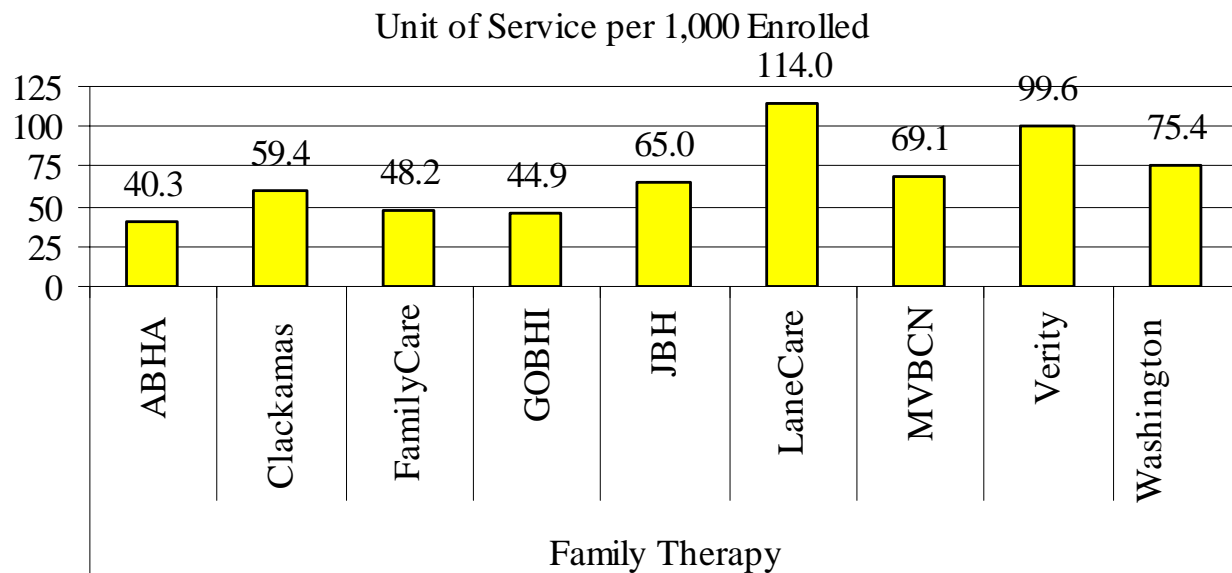


FIGURE 7: GROUP THERAPY BY MHO: 1ST QTR 2008 – CHILDREN 0-17

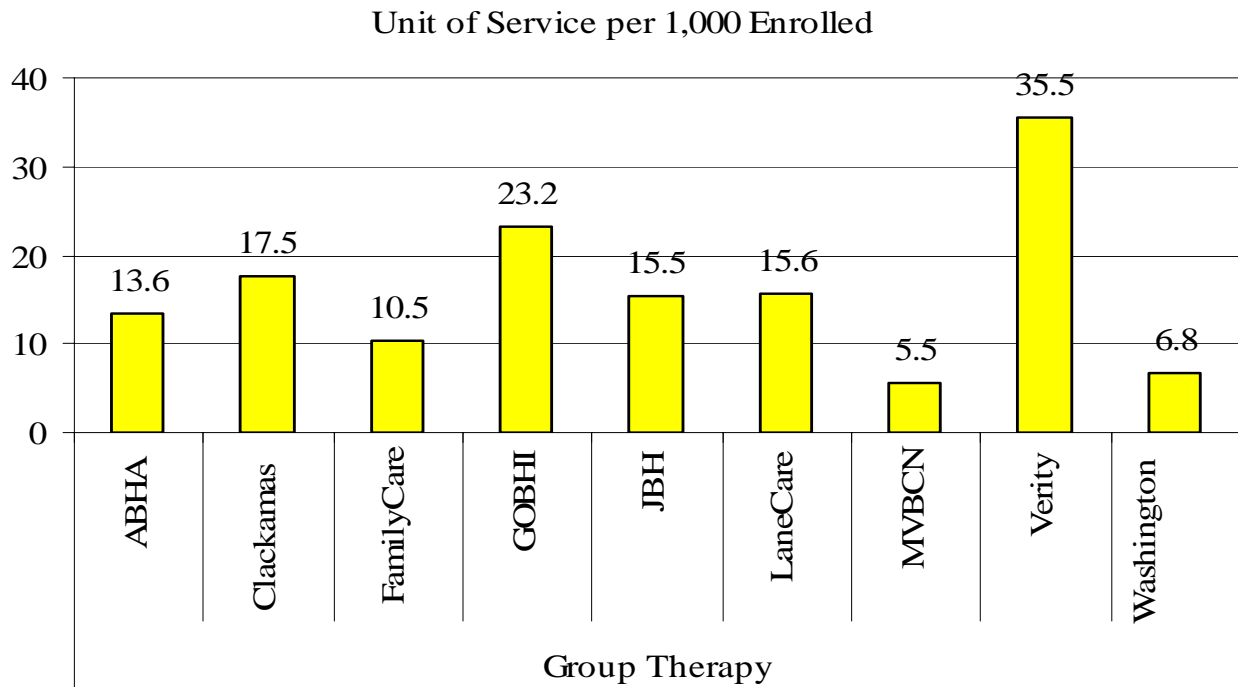
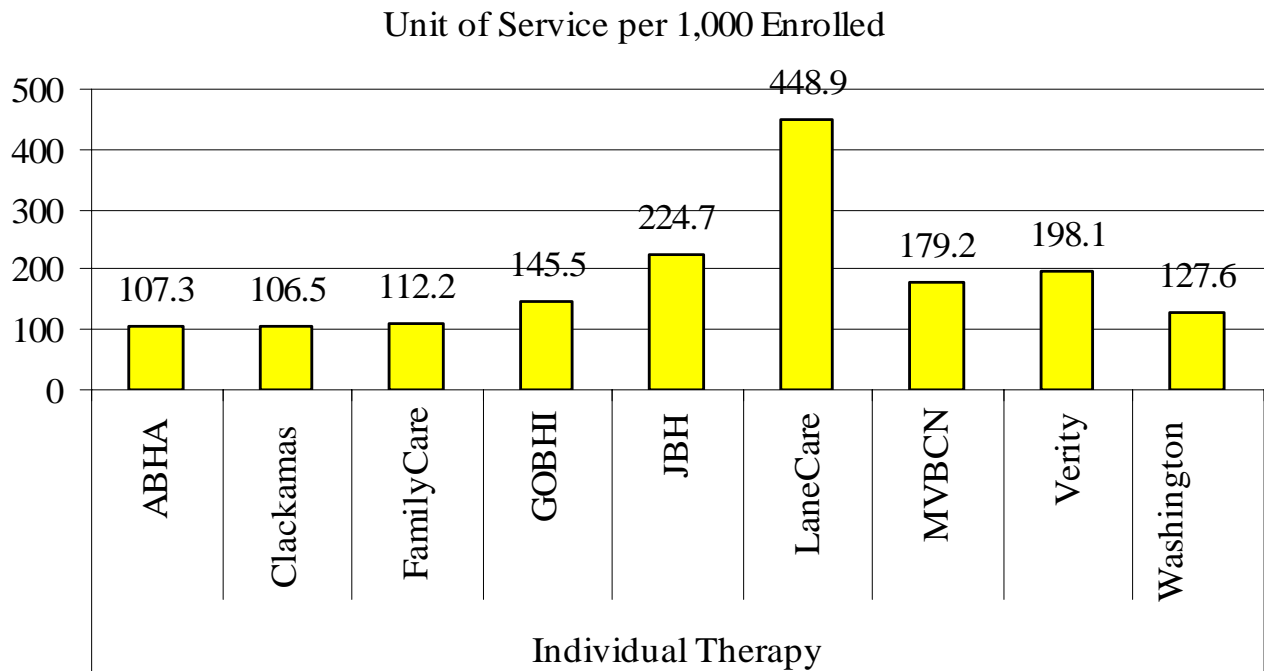
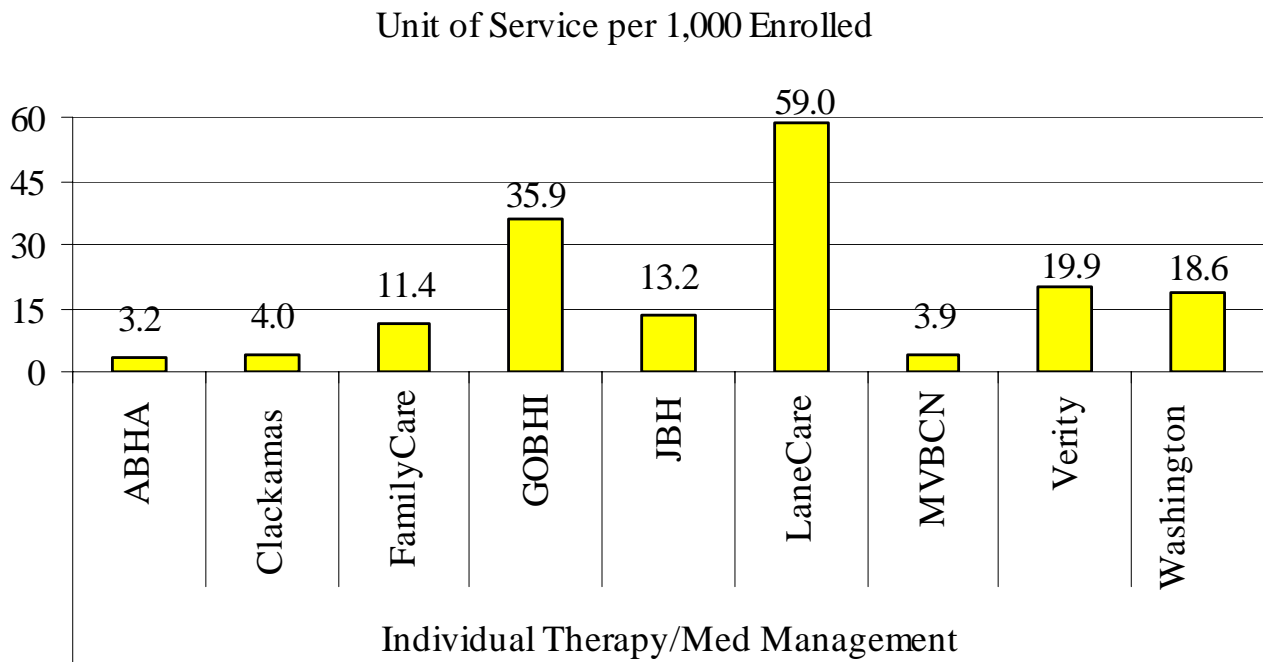


FIGURE 8: INDIVIDUAL THERAPY BY MHO: 1ST QTR 2008 – CHILDREN 0-17



**FIGURE 9: INDIVIDUAL THERAPY WITH MEDICATION MANAGEMENT BY MHO:
1ST QTR 2008 – CHILDREN 0-17**



**FIGURE 10: LEVEL OF NEED DETERMINATION BY MHO: 1ST QTR 2008 –
CHILDREN 0-17**

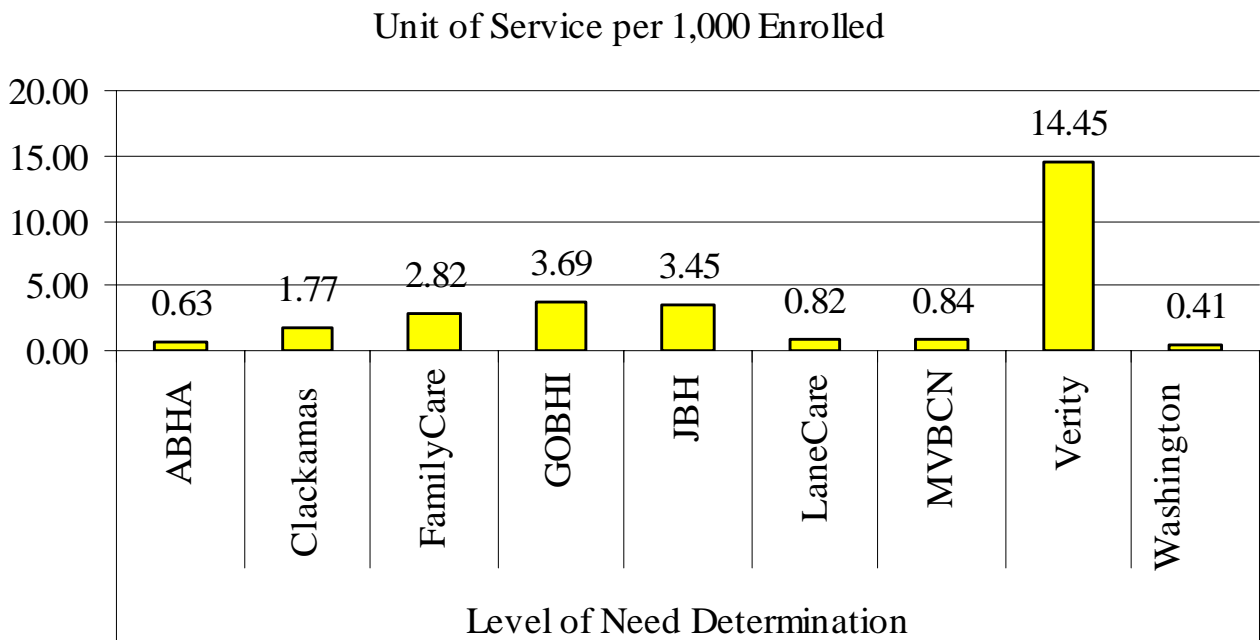


FIGURE 11: MEDICATION MANAGEMENT BY MHO: 1ST QTR 2008 – CHILDREN 0-17

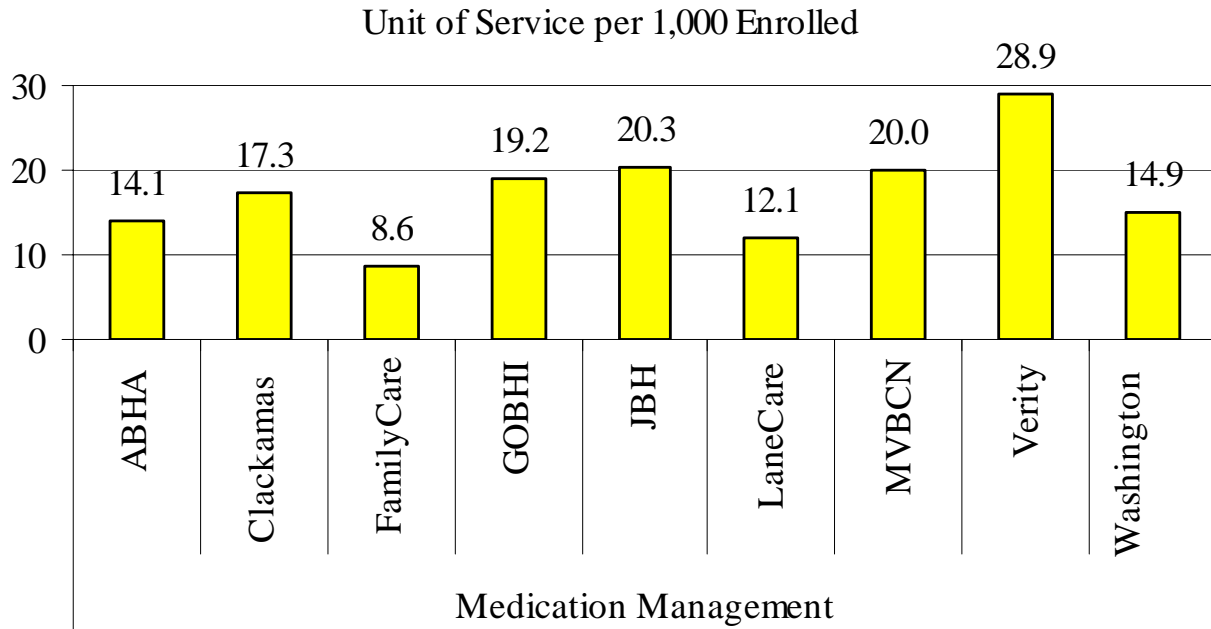


FIGURE 12: OUTPATIENT THERAPY BY MHO: 1ST QTR 2008 – CHILDREN 0-17

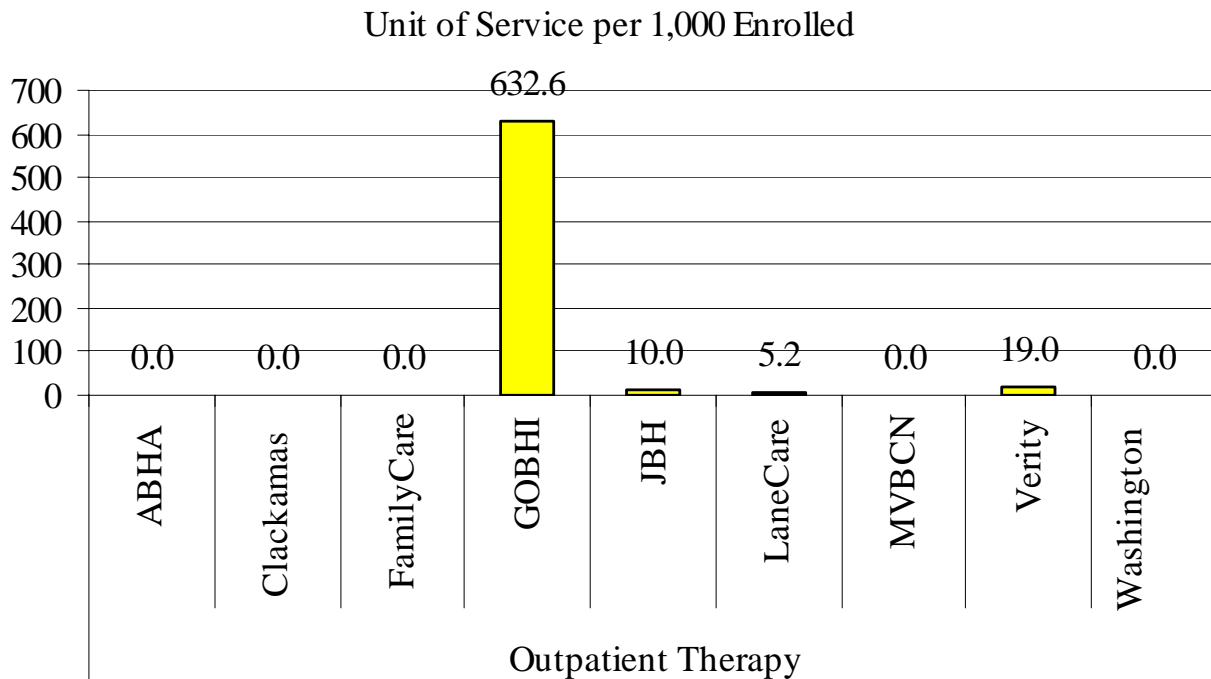


FIGURE 13: RESPITE SERVICES BY MHO: 1ST QTR 2008 – CHILDREN 0-17

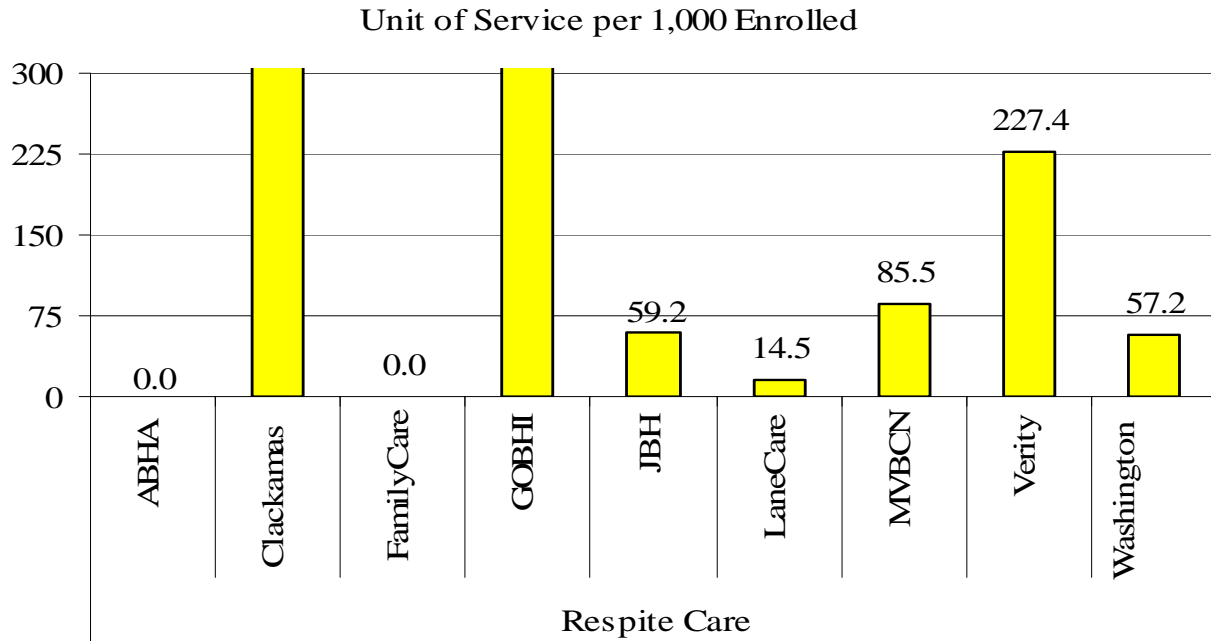


FIGURE 14: SKILLS TRAINING BY MHO: 1ST QTR 2008 – CHILDREN 0-17

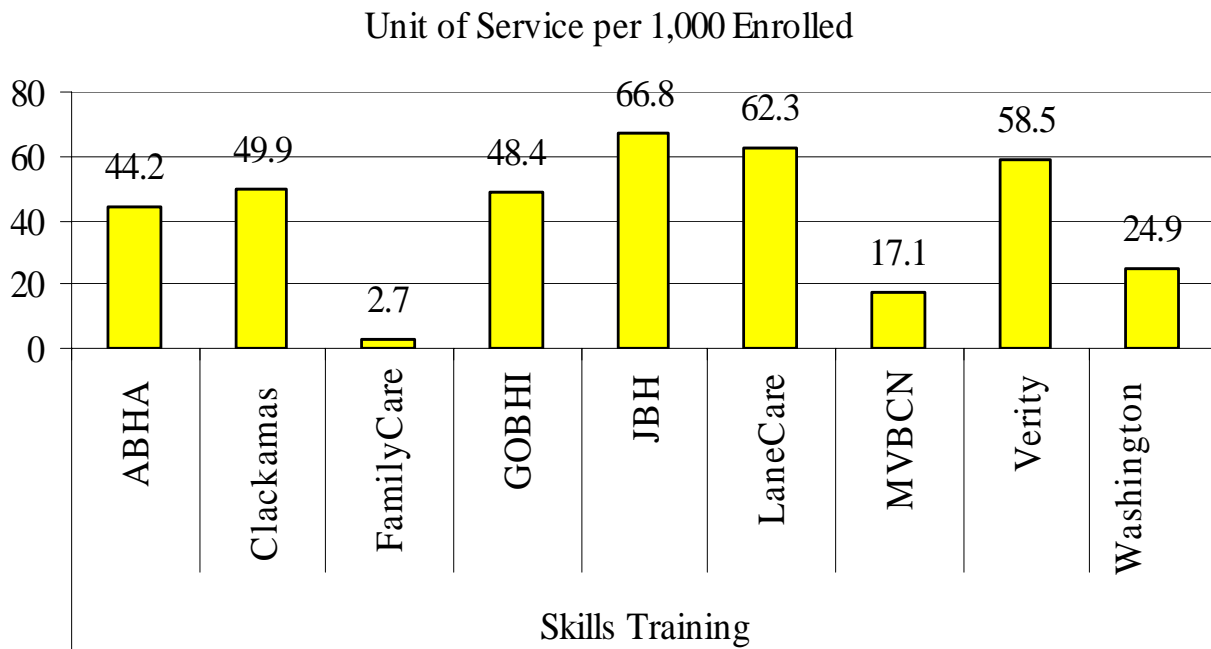
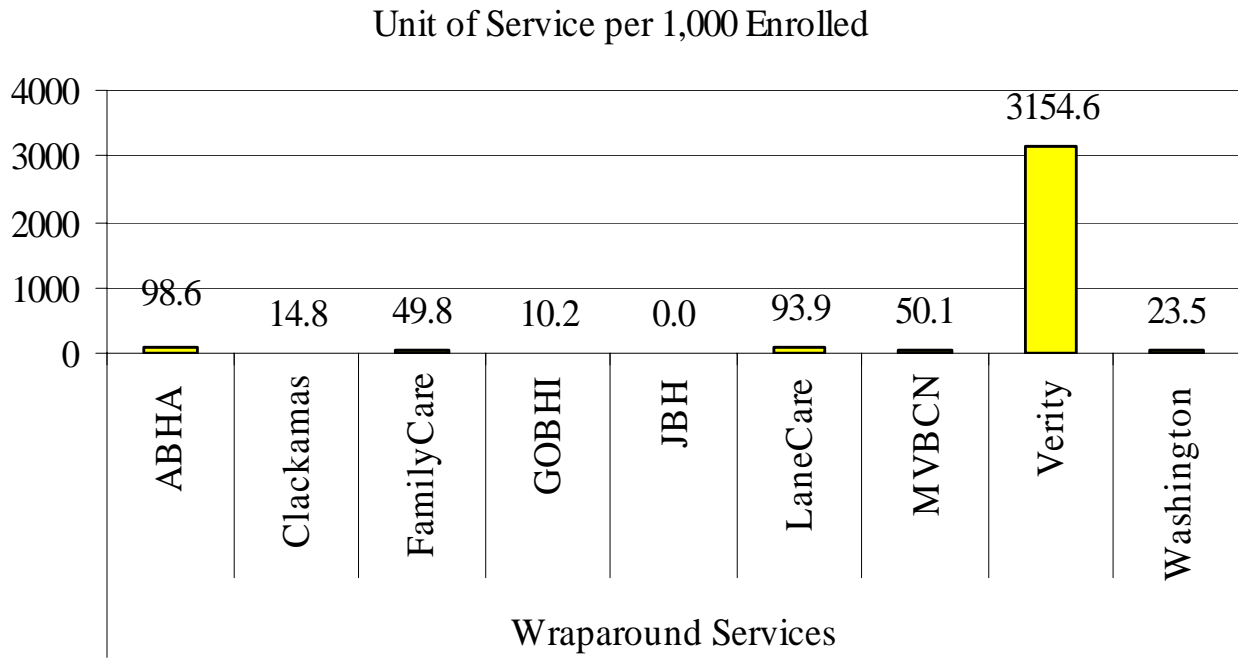


FIGURE 15: WRAP AROUND SERVICES BY MHO: 1ST QTR 2008 – CHILDREN 0-17



GLOSSARIES



GLOSSARY OF TERMS

Acute Care Services:

Services delivered to children admitted to a psychiatric unit at an acute care hospital.

Addiction and Mental Health Division (AMHD):

A Division of DHS responsible for the administration of addiction and mental health services for the State of Oregon.

Admissions:

Admission numbers reflect the unique admission of a child/children into a specific service (outpatient, PDTS, Acute care hospital etc.). The rate of admissions is one measure of demand for service and/or ability to access services.

Average Days of Service (ADOS):

The ADOS is based on the total number of days a child/children are in Psychiatric Day Treatment Services (PDTS). An episode of PDTS is defined as beginning on the first day of PDTS preceded by 30 or more days without PDTS. The ADOS is the total days of service across all episodes of service, divided by the number of service episodes.

Average Length of Stay (ALOS):

The ALOS is based on the total days of service divided by the unique members served.

Client Process Monitoring System (CPMS):

Database to monitor and track community services.

Encounter:

A contact or an admission into mental health services provided to specific child/children.

GLOSSARY OF TERMS

(Continued)

Enrolled (Enrollee):

An individual that is eligible for the Oregon Health Plan (OHP) and enrolled in an MHO.

Fee-For-Service (FFS):

Individuals who are eligible for the OHP, but are not enrolled with an MHO. This is also known as fee-for-service (FFS) or an “open card”.

Mental Health Organization (MHO):

A Prepaid Health Plan under contract with DHS to provide Covered Services under the OHP Medicaid Demonstration Project and State Children's Health Insurance Program (SCHIP). MHOs can be FCHPs, CMHPs, private MHOs or combinations thereof.

Oregon Health Plan (OHP):

Oregon's health care reform effort consisting of a Medicaid Demonstration Project, State Children's Health Insurance Program, an individual insurance program for persons excluded from health insurance coverage due to pre-existing health conditions, and a group insurance program for small businesses. One objective of this reform effort includes universal coverage for Oregonians. In the context of this report, OHP refers to all individuals on FFS.

Outpatient Services:

The array of outpatient services includes: mental health assessments; co-occurring disorder assessments; individual and group therapy; medication management; parent training; case management and care coordination; crisis intervention; consultation to schools and other agencies; flexible services; specialized support service to families; and skills training. Outpatient services do NOT include day treatment.

GLOSSARY OF TERMS

(Continued)

Percentage Rate:

This is a general measure of access, but more related to utilization of services.

It is a percentage calculated by summing the unique enrollees seen during a given time period and dividing that number by the total enrollees for that time period. For example, if there is 10,000 enrollees statewide in a given month and during that same month 500 of those enrollees receive services, the percent of enrollees served is 5%.

Psychiatric Day Treatment Services (PDTS):

PDTS are comprehensive, interdisciplinary, non-residential community-based programs consisting of psychiatric treatment, family treatment and therapeutic activities integrated with an accredited education program.

Psychiatric Residential Treatment Services (PRTS):

PRTS are away from home, residential facility based psychiatric treatment services that occur in a nationally accredited and state certified facility and includes assessment and evaluation, regular residential and sub-acute care.

Secure Adolescent Inpatient Program (SAIP):

Beginning in March 2005, this program provides highly specialized intensive mental health services to children between the ages of 14-17, including crisis admits from the Oregon Youth Authority (OYA) and youth served under the Psychiatric Security Review Board (PSRB). SAIP is a secure 24-hour medically monitored service in the community operated by Trillium Family Services.

GLOSSARY OF TERMS

(Continued)

Secure Children's Inpatient Program (SCIP):

Beginning in March 2002, this program provides highly specialized intensive mental health services to children under the age of 13. SCIP is a secure 24-hour medically monitored service in the community operated by Trillium Family Services.

Service Category:

Service category is a descriptive grouping of service codes (BA, ECC, and CPT) that are similar procedurally.

Sub-Acute Care:

Psychiatric treatment under the clinical direction of a psychiatrist as an alternative to hospitalization for children who are not in the most acute phase of a mental condition, but who require a level of care higher than generally provided in a residential psychiatric treatment setting.

Unique Served:

Unduplicated number of individuals receiving mental health services.

Unique Encounters:

Unduplicated services received by an individual(s) within a specific time period. One individual may have had several services provided – each service would be part of the calculations.

Unit of Service:

A unit of service, for the purposes of this report, is an equal application of one (1) unit of service equaling 15 minutes. Thus 1 day of service will equal 96 units; 1 month of service will equal 2880 units of service.

GLOSSARY OF SERVICE CATEGORIES

Each of the procedure codes have been listed under each of their respective categories of service. The number in parentheses that follow each of the procedure codes is the number of 15 minute units of service. Not all of the categories are recognized in the previous section of the report due to the low use rate.

Assertive Community Treatment:

H0039 (1)

Assessment & Evaluation:

90801 (1); 90802 (4); 90887 (1); 96100 (4); 96101 (4); 99213 (1); 99222 (96); 99223 (96); 99231 (96); 99232 (96); 99233 (96); 99238 (2); 99239 (3); H0002 (1); H0031 (1)

Case Management:

90882 (1); T1016 (1)

Child & Family Team Meetings:

H0032 (1)

Consultation:

99244 (1); 99252 (1); 99254 (1)

Crisis Services:

H2011 (1); S9484 (4)

Day Treatment:

H0037 (96); H2012 (4)

Family Therapy:

90846 (1); 90847 (1); 90849 (1)

Group Therapy:

90853 (1); 90857 (1)

Individual Therapy:

90804 (2); 90806 (3); 90808 (6); 90810 (2); 90812 (3); 90814 (6); H0004

Individual Therapy with Medication Management:

90805 (2); 90807 (3); 90809 (6); 90811 (2); 90813 (3); 90815 (6)

GLOSSARY OF SERVICE CATEGORIES

(Continued)

Interpretive Services:

T1013 (1)

Level of Need Determination:

T1023 (1)

Medication Management:

90862 (1); H0033 (1); H0034 (1); H2010 (1)

MST (Multi-Systemic Therapy for Juveniles):

H2033 (1)

Outpatient Therapy:

H0036 (1); H2023 (1)

PRTS – A & E:

H0018 (96)

PRTS – Residential:

H0019 (2880)

Respite Care:

H0045 (96); S5151 (96); S9125 (96); T1005 (1)

Skills Training:

G0176 (3); G0177 (3); H2014 (1); H2032 (1)

Sub-Acute Care:

H2013 (96)

Treatment Foster Care:

S5145 (96); S5146 (2880)

Wraparound Services:

H0038 (1); H2021 (1); H2022 (96); H2027 (1)