

*Department of Human Services
Addictions and Mental Health Division*

Oregon Health Plan Mental Health Utilization Quarterly Report



*July 1, 2007
Through
June 30, 2008*

**Report Produced Quarterly by
Program Analysis and Evaluation Team
JANUARY 2009**



EXECUTIVE SUMMARY

REPORT ON OHP UTILIZATION AND ENROLLMENT FOR MENTAL HEALTH SERVICES: JULY 2007 THROUGH JUNE 2008

The Mental Health Organization (MHO) Utilization Quarterly Report for the period of July 1, 2007 through June 30, 2008, contains enrollment, unique served and hospitalization data. The data for this report were pulled December 24, 2008. All information came from the Division of Medical Assistance Programs' (DMAP) Decision Support/Surveillance and Utilization Review System (DSSURS). ***Note: Due to a new MMIS system, data from DSSURS became static on November 30, 2008. No new data can be accessed until February 2009.**

Population

- This report reflects only Medicaid members who were eligible, enrolled, and received mental health services during the report period.
- The acute care admission population is any enrolled Medicaid member who was admitted for inpatient psychiatric treatment.
- Those who are receiving mental health services and alcohol and drug treatment are included in this report.

Limitations

- This report does not include tests of the statistical significance of apparent differences among providers or across time periods.
- The report is a “snap-shot” in time for the specific report being created and is comparable to the report released in October 2008.
- Acute hospitalization data includes and is not limited to transfers from one facility to another and/or re-admitted within a 24-hour time frame.
- There is a 180-day lag between the times a service is delivered and the time the services is contractually required to be billed.
- The enrollment numbers refer to the number enrolled at any point within the quarter.

Formula

- The calculations for the unique enrollees and/or served is dividing the number of total enrollees by the number served within the same time period.
- The penetration rate, or percentage rate, is a general measure of access and is related to the utilization of services.

Report Schedule: This report is created on a quarterly basis.

TABLE OF CONTENTS

The format and contents are constructed as follows:

- Figures are used to illustrate trends in statewide data.
- Tables are used to summarize quarterly data at the MHO level. Some tables include FFS and All Eligibles.



Executive Summary	i
-------------------------	---

Enrollment Data:

Table 1: Unique Members Enrolled by MHO	1
Figure 1: Total Unique Members Enrolled by Age Groups	1
Table 2: Unique Members Enrolled by Age Groups/MHO	2
Table 3: Enrollment Numbers per Month.....	3

Served Data:

Table 4: Unique Members Served by MHO and Percentage Rate.....	4
Figure 2: Total Unique Members Served by Age Groups	4
Table 5: Unique Served by MHO/Age Group and Percentage Rate	5
Figure 3: Total Unique Served by Ethnicity	6
Table 6: Unique Served by MHO/Ethnicity and Percentage Rate	6
Figure 4: Total All Quarters: Unique Encounters by Diagnostic Groups	9
Table 7: Unique Served Encounters by MHO/Diagnostic Groups.....	9
Table 8: Unique Members Served per Month.....	10

Hospital Data:

Table 9: Unique Hospital Admissions per 1,000 Members Enrolled	11
Table 10: Unique Hospital Admissions: Age Groups per 1,000 Members Enrolled ...	11
Table 11: Average Hospital Days of Service.....	12
Table 12: Average Hospital Days by MHO/Age Group	13
Table 13: Percent of Hospital Re-Admission within 30 days	14
Table 14: Percent of Hospital Re-Admission within 180 days.....	14
Figure 5: Total Seen by Outpatient within 7 Days of Hospital Discharge.....	15
Table 15: Seen by Outpatient within 7 Days of Hospital Discharge	15

Glossaries:

MHO Utilization Report Glossary	16
Diagnostic Categories Glossary	18
Service Categories Glossary	21

ENROLLMENT DATA

- ❖ Enrolled: Eligible for OHP and enrolled in an MHO
- ❖ Eligibles: Both Enrolled and FFS
- ❖ Fee-For-Service (FFS): Eligible for OHP and NOT enrolled with an MHO (Open Card)



TABLE 1: UNIQUE MEMBERS ENROLLED BY MHO

MHO Contractors	2007				2008			
	3 rd Qtr	% Enrolled	4 th Qtr	% Enrolled	1 st Qtr	% Enrolled	2 nd Qtr	% Enrolled
ABHA	25,682	6.9%	25,601	6.9%	26,296	7.0%	27,841	7.1%
Clackamas	25,579	6.9%	25,817	6.9%	26,143	7.0%	27,254	7.0%
FamilyCare	10,871	2.9%	10,792	2.9%	10,679	2.9%	11,290	2.9%
GOBHI	30,734	8.3%	30,517	8.2%	30,886	8.2%	32,332	8.3%
JBH	63,856	17.2%	63,944	17.2%	64,456	17.2%	67,907	17.4%
LaneCare	35,552	9.6%	35,469	9.5%	35,570	9.5%	37,187	9.5%
MVBCN	73,987	19.9%	74,433	20.0%	75,060	20.0%	77,741	19.9%
Verity	72,315	19.5%	72,550	19.5%	72,680	19.4%	75,086	19.2%
Washington	32,715	8.8%	32,600	8.8%	32,651	8.7%	34,240	8.8%
Total Enrolled	371,291	100%	371,723	100%	374,421	100%	390,878	100%

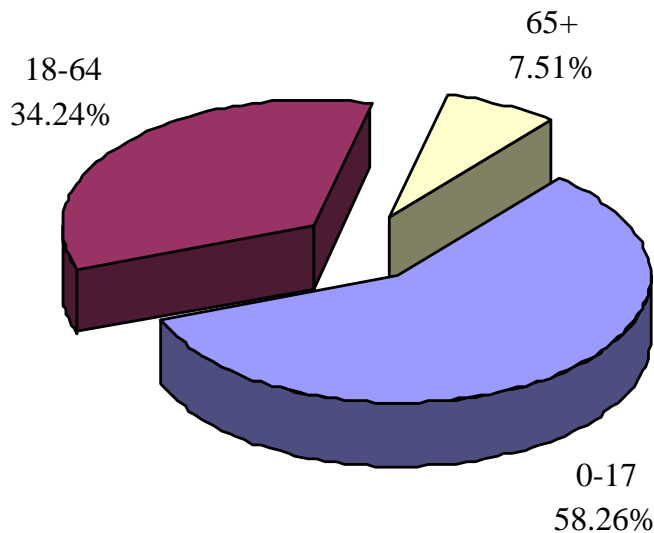
n=Unique Enrolled/d=Total Enrolled

	3 rd Qtr	% All Eligibles	4 th Qtr	% All Eligibles	1 st Qtr	% All Eligibles	2 nd Qtr	% All Eligibles
Total Enrolled	371,291	90.9%	371,723	90.7%	374,421	89.4%	390,878	91.2%
FFS ³	37,086	9.1%	37,894	9.3%	44,351	10.6%	37,899	8.8%
All Eligibles ²	408,377	100%	409,617	100%	418,772	100%	428,777	100%

n=Total Enrolled/d=All Eligibles

n=FFS/d=All Eligibles

FIGURE 1: TOTAL UNIQUE MEMBERS ENROLLED BY AGE GROUPS



³ Fee-For-Service (FFS): Eligible for OHP and NOT enrolled with an MHO (Open Card)

² Eligibles: Both Enrolled and FFS

TABLE 2: UNIQUE MEMBERS Enrolled¹ by Age Groups & Percentage by MHO Total

MHO Contractors	Age Groups	2007				2008			
		3 rd Qtr	% by MHO Qtr Total ²	4 th Qtr	% by MHO Qtr Total	1 st Qtr	% by MHO Qtr Total	2 nd Qtr	% by MHO Qtr Total
ABHA	0-17	15,044	58.6%	15,064	58.8%	15,667	59.6%	16,600	59.6%
	18-64	8,844	34.4%	8,765	34.2%	8,866	33.7%	9,479	34.0%
	65 +	1,794	7.0%	1,772	6.9%	1,763	6.7%	1,762	6.3%
Clackamas	0-17	15,111	59.1%	15,342	59.4%	15,738	60.2%	16,340	60.0%
	18-64	8,214	32.1%	8,206	31.8%	8,184	31.3%	8,664	31.8%
	65 +	2,254	8.8%	2,269	8.8%	2,221	8.5%	2,250	8.3%
FamilyCare	0-17	6,315	58.1%	6,347	58.8%	6,342	59.4%	6,577	58.3%
	18-64	4,072	37.5%	3,965	36.7%	3,857	36.1%	4,235	37.5%
	65 +	484	4.5%	480	4.4%	480	4.5%	478	4.2%
GOBHI	0-17	18,111	58.9%	18,133	59.4%	18,545	60.0%	19,407	60.0%
	18-64	10,263	33.4%	9,996	32.8%	9,953	32.2%	10,556	32.6%
	65 +	2,360	7.7%	2,388	7.8%	2,388	7.7%	2,369	7.3%
JBH	0-17	34,334	53.8%	34,599	54.1%	35,303	54.8%	37,047	54.6%
	18-64	24,797	38.8%	24,605	38.5%	24,423	37.9%	26,129	38.5%
	65 +	4,725	7.4%	4,740	7.4%	4,730	7.3%	4,731	7.0%
LaneCare	0-17	18,904	53.2%	18,980	53.5%	19,242	54.1%	19,876	53.4%
	18-64	14,426	40.6%	14,261	40.2%	14,106	39.7%	15,066	40.5%
	65 +	2,222	6.3%	2,228	6.3%	2,222	6.2%	2,245	6.0%
MVBCN	0-17	45,729	61.8%	46,345	62.3%	47,187	62.9%	48,896	62.9%
	18-64	23,479	31.7%	23,275	31.3%	23,069	30.7%	24,024	30.9%
	65 +	4,779	6.5%	4,813	6.5%	4,804	6.4%	4,821	6.2%
Verity	0-17	39,145	54.1%	39,631	54.6%	39,986	55.0%	41,444	55.2%
	18-64	26,319	36.4%	26,080	35.9%	25,813	35.5%	26,791	35.7%
	65 +	6,851	9.5%	6,839	9.4%	6,881	9.5%	6,851	9.1%
Washington	0-17	21,450	65.6%	21,488	65.9%	21,680	66.4%	22,744	66.4%
	18-64	8,476	25.9%	8,306	25.5%	8,161	25.0%	8,661	25.3%
	65 +	2,789	8.5%	2,806	8.6%	2,810	8.6%	2,835	8.3%
Total by Quarter	0-17	214,143	57.7%	215,929	58.1%	219,690	58.7%	228,931	58.6%
	18-64	128,890	34.7%	127,459	34.3%	126,432	33.8%	133,605	34.2%
	65 +	28,258	7.6%	28,335	7.6%	28,299	7.6%	28,342	7.3%

¹ Enrolled: Eligible for OHP and enrolled in an MHO² Percentage formula: n=unique enrolled by age group/d=MHO total enrolled

TABLE 3: ENROLLMENT NUMBERS PER MONTH

MHO Contractor	Jul-07	Aug-07	Sep-07	Oct-06	Nov-06	Dec-06	Jan-08	Feb-08	Mar-08	Apr-07	May-07	Jun-07
ABHA	23,758	23,779	23,668	23,891	23,741	23,674	24,106	25,063	24,867	25,582	25,793	26,048
Clackamas	23,846	23,981	24,046	24,166	24,070	23,996	24,340	25,177	24,745	25,409	25,339	25,715
FamilyCare	9,947	9,649	10,137	10,164	10,161	10,035	10,130	10,423	10,102	10,360	10,259	10,730
GOBHI	28,550	28,443	28,191	28,503	28,123	28,122	28,477	29,403	29,120	29,749	29,969	30,155
JBH	59,357	59,554	59,153	59,837	59,591	59,476	59,943	61,425	60,803	62,350	62,775	63,656
LaneCare	32,940	33,173	33,176	33,492	33,225	33,022	33,307	34,165	33,567	34,294	34,479	34,783
MVBCN	68,470	68,891	68,606	69,480	69,060	69,156	69,681	71,685	70,626	72,178	72,570	73,082
Verity	68,072	68,504	68,919	69,080	68,598	68,117	68,383	69,910	69,099	70,416	70,585	71,044
Washington	30,158	30,435	30,370	30,601	30,254	30,073	30,185	31,326	30,653	31,499	31,616	32,172
Monthly Totals	345,098	346,409	346,266	349,214	346,823	345,671	348,552	358,577	353,582	361,837	363,385	367,385
% Monthly Increase/Decrease	0.38%	-0.04%	0.84%	-0.69%	-0.33%	0.83%	2.80%	-1.41%	2.28%	0.43%	1.09%	
Eligibles	407,845	408,743	408,543	409,946	409,608	409,297	412,943	422,765	420,607	425,409	428,040	432,883
FFS	62,747	62,334	62,277	60,732	62,785	63,626	64,391	64,188	67,025	63,572	64,655	65,498

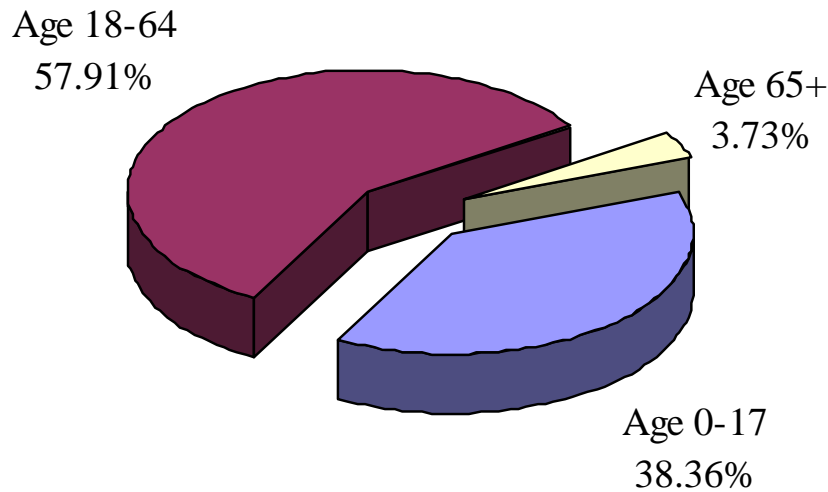
SERVICE DATA



TABLE 4: UNIQUE MEMBERS SERVED BY MHO AND PERCENTAGE² OF ENROLLEES SERVED

MHO Contractors	2007				2008			
	3 rd Qtr	% Rate	4 th Qtr	% Rate	1 st Qtr	% Rate	2 nd Qtr	% Rate
ABHA	2,200	8.6%	2,328	9.1%	2,368	9.0%	2,354	8.5%
Clackamas	2,371	9.3%	2,366	9.2%	2,409	9.2%	2,441	9.0%
FamilyCare	746	6.9%	594	5.5%	686	6.4%	924	8.2%
GOBHI	2,697	8.8%	2,871	9.4%	3,017	9.8%	2,930	9.1%
JBH	5,590	8.8%	5,993	9.4%	5,952	9.2%	6,152	9.1%
LaneCare	4,989	14.0%	5,239	14.8%	5,412	15.2%	5,604	15.1%
MVBCN	6,382	8.6%	7,052	9.5%	7,297	9.7%	7,342	9.4%
Verity	8,449	11.7%	8,186	11.3%	8,329	11.5%	8,301	11.1%
Washington	2,781	8.5%	2,836	8.7%	3,026	9.3%	3,136	9.2%
Total Served	36,205	9.8%	37,465	10.1%	38,496	10.3%	39,184	10.0%
FFS	645	1.7%	680	1.8%	805	1.8%	989	2.6%

FIGURE 2: TOTAL UNIQUE MEMBERS SERVED BY AGE GROUPS



² Percentage Formula: n=Unique Served/d=Unique Enrolled.

TABLE 5: UNIQUE¹ SERVED BY MHO/AGE GROUP AND PERCENTAGE² OF ENROLLEES SERVED

MHO Contractors	Age Groups	2007				2008			
		3 rd Qtr	Rate	4 th Qtr	Rate	1 st Qtr	Rate	2 nd Qtr	Rate
ABHA	0-17	827	5.5%	875	5.8%	915	5.8%	947	5.7%
	18-64	1,296	14.7%	1,373	15.7%	1,375	15.5%	1,346	14.2%
	65+	77	4.3%	80	4.5%	78	4.4%	61	3.5%
Clackamas	0-17	954	6.3%	923	6.0%	927	5.9%	983	6.0%
	18-64	1,343	16.4%	1,370	16.7%	1,406	17.2%	1,386	16.0%
	65+	74	3.3%	73	3.2%	76	3.4%	72	3.2%
FamilyCare	0-17	305	4.8%	233	3.7%	291	4.6%	369	5.6%
	18-64	434	10.7%	357	9.0%	385	10.0%	551	13.0%
	65+	7	1.4%	4	0.8%	10	2.1%	4	0.8%
GOBHI	0-17	1,085	6.0%	1,168	6.4%	1,203	6.5%	1,245	6.4%
	18-64	1,507	14.7%	1,602	16.0%	1,707	17.2%	1,589	15.1%
	65+	105	4.4%	101	4.2%	107	4.5%	96	4.1%
JBH	0-17	2,071	6.0%	2,346	6.8%	2,389	6.8%	2,560	6.9%
	18-64	3,356	13.5%	3,476	14.1%	3,413	14.0%	3,449	13.2%
	65+	163	3.4%	171	3.6%	150	3.2%	143	3.0%
LaneCare	0-17	1,870	9.9%	1,955	10.3%	2,067	10.7%	2,168	10.9%
	18-64	3,001	20.8%	3,151	22.1%	3,212	22.8%	3,303	21.9%
	65+	118	5.3%	133	6.0%	133	6.0%	133	5.9%
MVBCN	0-17	2,554	5.6%	2,773	6.0%	2,965	6.3%	3,095	6.3%
	18-64	3,573	15.2%	4,025	17.3%	4,093	17.7%	4,019	16.7%
	65+	255	5.3%	254	5.3%	239	5.0%	228	4.7%
Verity	0-17	2,803	7.2%	2,841	7.2%	2,788	7.0%	2,874	6.9%
	18-64	5,132	19.5%	4,881	18.7%	5,013	19.4%	4,906	18.3%
	65+	514	7.5%	464	6.8%	528	7.7%	521	7.6%
Washington	0-17	1,067	5.0%	1,070	5.0%	1,195	5.5%	1,329	5.8%
	18-64	1,588	18.7%	1,641	19.8%	1,700	20.8%	1,704	19.7%
	65+	126	4.5%	125	4.5%	131	4.7%	103	3.6%
Total Served	0-17	13,536	6.3%	14,184	6.6%	14,740	6.7%	15,570	6.8%
	18-64	21,230	16.5%	21,876	17.2%	22,304	17.6%	22,253	16.7%
	65+	1,439	5.1%	1,405	5.0%	1,452	5.1%	1,361	4.8%

¹ Unique Served: All duplicate records are removed.² Percentage Formula: n=Unique Served/d=Unique Enrolled.

FIGURE 3: TOTAL UNIQUE¹ SERVED BY ETHNICITY

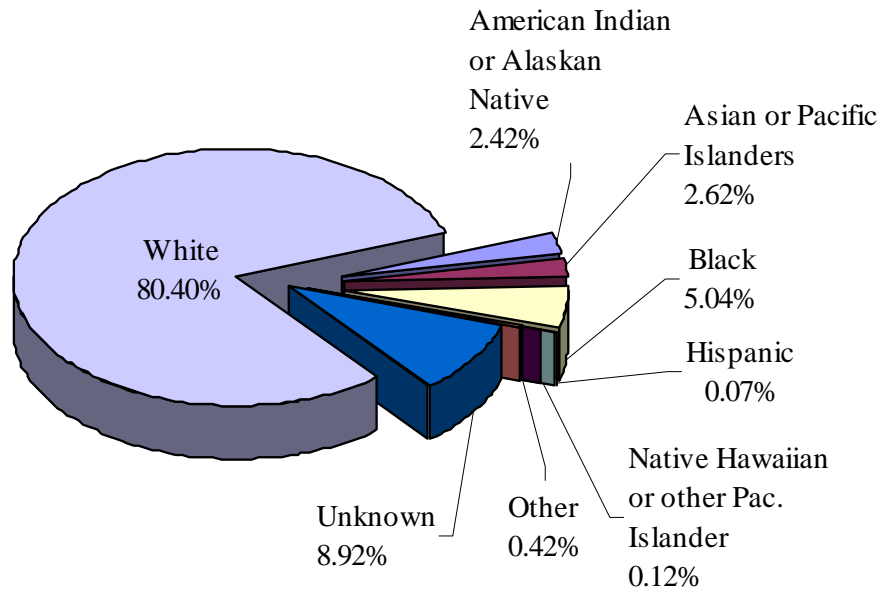


TABLE 6: UNIQUE SERVED BY MHO/ETHNICITY AND PERCENTAGE² OF ENROLLEES SERVED

MHO	Race Description	2007				2008			
		3 rd Qtr	Rate	4 th Qtr	Rate	1 st Qtr	Rate	2 nd Qtr	Rate
ABHA	Am. Indian/Alaskan Ntv	45	7.4%	50	8.5%	38	6.5%	23	3.8%
	Asian or Pacific Islanders	6	2.8%	4	1.8%	7	3.0%	7	2.7%
	Black	27	9.0%	20	7.2%	22	7.8%	23	8.1%
	Hispanic	0	0.0%	0	0.0%	0	0.0%	0	0.0%
	Ntv Hawaiian/Pac. Islander	4	8.3%	8	16.7%	6	14.0%	5	11.6%
	Other	6	27.3%	9	31.0%	8	18.6%	10	15.9%
	Unknown	139	3.3%	141	3.2%	148	3.2%	148	3.0%
	White	1,973	9.7%	2,096	10.5%	2,139	10.4%	2,138	9.9%
Clackamas	Am. Indian/Alaskan Ntv	52	16.4%	42	14.0%	50	16.3%	37	10.8%
	Asian or Pacific Islanders	32	6.2%	32	6.4%	35	7.0%	27	5.1%
	Black	60	10.4%	56	9.2%	60	9.9%	60	9.5%
	Hispanic	1	5.6%	1	5.9%	1	6.3%	0	0.0%
	Ntv Hawaiian/Pac. Islander	0	0.0%	0	0.0%	3	4.2%	7	8.5%
	Other	7	26.9%	1	2.4%	6	11.3%	5	7.5%
	Unknown	182	3.3%	177	3.0%	166	2.8%	158	2.6%
	White	2,037	11.0%	2,057	11.2%	2,088	11.2%	2,147	11.0%

Note: Current MMIS does not support federal regulations concerning race and ethnic identification. Previous Hispanic identifications are now included in the unknown category.

¹ Unique Served: All duplicate records are removed.

² Percentage Formula: n=Unique Served/d=Unique Enrolled.

TABLE 6: UNIQUE¹ SERVED BY MHO/ETHNICITY AND PERCENTAGE² OF ENROLLEES SERVED (continued)

MHO	Race Description	2007				2008			
		3 rd Qtr	Rate	4 th Qtr	Rate	1 st Qtr	Rate	2 nd Qtr	Rate
FamilyCare	Am. Indian/Alaskan Ntv	21	14.1%	16	11.0%	26	16.3%	37	21.8%
	Asian or Pacific Islanders	24	4.0%	6	1.0%	16	2.8%	28	4.6%
	Black	59	5.1%	46	4.1%	51	4.6%	83	7.3%
	Hispanic	0	0.0%	0	0.0%	0	0.0%	0	0.0%
	Ntv Hawaiian/Pac. Islander	1	1.4%	1	1.4%	1	1.6%	2	3.0%
	Other	11	47.8%	4	13.3%	5	13.5%	7	16.7%
	Unknown	31	1.8%	35	2.0%	56	3.1%	84	4.4%
	White	599	8.4%	486	6.9%	531	7.7%	683	9.3%
GOBHI	Am. Indian/Alaskan Ntv	55	10.4%	53	10.2%	59	11.5%	47	8.4%
	Asian or Pacific Islanders	7	4.6%	12	7.7%	6	3.8%	12	6.9%
	Black	42	14.6%	28	10.1%	38	13.3%	33	11.3%
	Hispanic	2	33.3%	5	100.0%	3	75.0%	1	16.7%
	Ntv Hawaiian/Pac. Islander	1	1.7%	1	1.7%	2	3.2%	6	11.5%
	Other	4	12.5%	2	5.6%	7	13.0%	10	11.0%
	Unknown	261	3.3%	340	4.3%	328	4.0%	354	4.1%
	White	2,325	10.7%	2,430	11.3%	2,574	11.9%	2,467	10.9%
JBH	Am. Indian/Alaskan Ntv	170	10.9%	203	13.2%	183	12.2%	193	13.2%
	Asian or Pacific Islanders	10	2.8%	20	5.8%	21	6.3%	25	7.3%
	Black	54	8.0%	70	10.3%	62	9.2%	67	9.6%
	Hispanic	4	25.0%	4	30.8%	2	16.7%	1	10.0%
	Ntv Hawaiian/Pac. Islander	10	10.2%	5	5.2%	8	7.5%	9	7.4%
	Other	14	16.3%	34	24.5%	33	16.8%	40	12.8%
	Unknown	453	5.6%	489	5.8%	511	5.7%	599	6.2%
	White	4,875	9.2%	5,168	9.8%	5,132	9.7%	5,218	9.4%
LaneCare	Am. Indian/Alaskan Ntv	81	16.0%	81	15.7%	79	15.6%	89	17.1%
	Asian or Pacific Islanders	29	6.5%	35	8.0%	33	7.9%	42	9.1%
	Black	115	12.6%	118	13.1%	113	12.4%	119	13.0%
	Hispanic	2	22.2%	3	30.0%	4	33.3%	5	27.8%
	Ntv Hawaiian/Pac. Islander	4	6.8%	5	8.8%	5	8.2%	2	3.2%
	Other	6	16.2%	7	15.6%	9	14.5%	16	21.9%
	Unknown	382	8.7%	450	9.7%	461	9.6%	528	10.1%
	White	4,370	15.0%	4,540	15.7%	4,708	16.4%	4,803	16.1%

Note: Current MMIS does not support federal regulations concerning race and ethnic identification. Previous Hispanic identifications are now included in the unknown category.

¹ Unique Served: All duplicate records are removed.

² Percentage Formula: n=Unique Served/d=Unique Enrolled.

TABLE 6: UNIQUE¹ SERVED BY MHO/ETHNICITY AND PERCENTAGE² OF ENROLLEES SERVED (*continued*)

MHO	Race Description	2007				2008			
		3 rd Qtr	Rate	4 th Qtr	Rate	1 st Qtr	Rate	2 nd Qtr	Rate
MVBCN	Am. Indian/Alaskan Ntv	148	15.8%	138	15.3%	153	16.5%	162	17.4%
	Asian or Pac. Islanders	62	7.2%	58	6.9%	53	6.0%	59	6.4%
	Black	127	12.6%	125	11.9%	140	13.6%	157	15.0%
	Hispanic	7	16.3%	7	20.0%	8	32.0%	7	24.1%
	Ntv Hawaiian/Pac. Islander	5	1.9%	15	6.0%	20	7.5%	15	5.4%
	Other	26	17.3%	38	24.7%	41	23.0%	35	15.4%
	Unknown	633	2.9%	696	3.0%	749	3.2%	776	3.2%
	White	5,374	11.0%	5,975	12.4%	6,133	12.7%	6,131	12.2%
Verity	Am. Indian/Alaskan Ntv	296	26.5%	287	26.5%	289	26.2%	285	25.8%
	Asian or Pacific Islanders	686	12.1%	663	11.5%	657	11.2%	625	10.2%
	Black	1,259	10.2%	1,257	10.1%	1,252	10.1%	1,274	10.1%
	Hispanic	11	40.7%	7	46.7%	5	38.5%	7	43.8%
	Ntv Hawaiian/Pac. Islander	5	2.2%	2	0.8%	4	1.6%	7	2.4%
	Other	43	25.0%	47	23.2%	47	19.6%	60	18.7%
	Unknown	627	4.4%	618	4.2%	656	4.4%	638	4.2%
	White	5,522	14.4%	5,305	14.0%	5,419	14.3%	5,405	13.7%
Washington	Am. Indian/Alaskan Ntv	40	18.9%	51	21.9%	50	22.6%	40	18.1%
	Asian or Pacific Islanders	167	8.8%	145	7.7%	153	8.4%	154	8.1%
	Black	153	10.3%	135	8.8%	153	9.9%	173	10.8%
	Hispanic	2	7.4%	1	6.7%	2	14.3%	4	33.3%
	Ntv Hawaiian/Pac. Islander	4	2.4%	2	1.2%	0	0.0%	0	0.0%
	Other	8	17.8%	6	9.7%	14	16.3%	11	10.8%
	Unknown	332	2.6%	361	2.8%	370	2.9%	418	3.1%
	White	2,075	12.8%	2,135	13.5%	2,284	14.3%	2,336	13.9%
Total Served	Am. Indian/Alaskan Ntv	908	15.3%	921	15.8%	927	15.9%	913	15.4%
	Asian or Pacific Islanders	1,023	9.6%	975	9.1%	981	9.1%	979	8.6%
	Black	1,896	10.1%	1,855	9.8%	1,891	10.0%	1,989	10.3%
	Hispanic	29	18.1%	28	23.9%	25	24.3%	25	21.6%
	Ntv Hawaiian/Pac. Islander	34	3.2%	39	3.6%	49	4.6%	53	4.7%
	Other	125	21.1%	148	20.0%	170	17.9%	194	14.9%
	Unknown	3,040	3.8%	3,307	3.9%	3,445	4.0%	3,703	4.2%
	White	29,150	11.5%	30,192	12.1%	31,008	12.3%	31,328	11.9%

Note: Current MMIS does not support federal regulations concerning race and ethnic identification. Previous Hispanic identifications are now included in the unknown category.

¹ Unique Served: All duplicate records are removed.

² Percentage Rate Formula: n=Unique Served/d=Unique Enrolled.

FIGURE 4: UNIQUE ENCOUNTERS BY DIAGNOSTIC GROUPS: TOTAL ALL QUARTERS

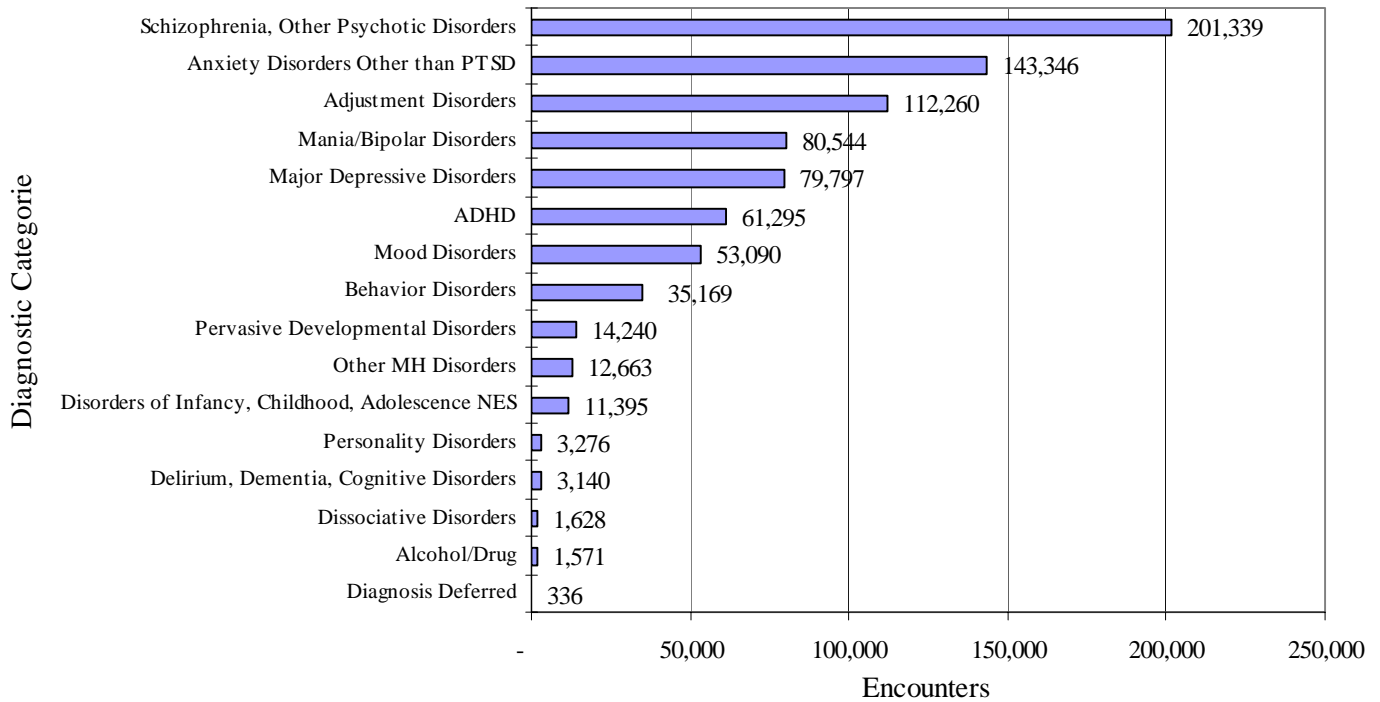


TABLE 7: UNIQUE¹ SERVED ENCOUNTERS² BY MHO/DIAGNOSTIC GROUPS IN DESCENDING ORDER BASED ON THE 2ND QUARTER 2008

MHO Contractors	Diagnostic Group	2007		2008	
		3 rd Qtr	4 th Qtr	1 st Qtr	2 nd Qtr
Total Encounters	Schizophrenia, Other Psychotic Disorders	52,746	53,055	48,537	47,001
	Anxiety Disorders Other than PTSD	33,538	35,840	37,133	36,835
	Adjustment Disorders	25,899	27,880	29,226	29,255
	Major Depressive Disorders	19,379	19,381	20,394	20,643
	Mania/Bipolar Disorders	19,864	20,043	20,469	20,168
	ADHD	13,686	15,267	16,390	15,952
	Mood Disorders	12,125	13,011	14,244	13,710
	Behavior Disorders	7,697	8,891	9,351	9,230
	Pervasive Developmental Disorders	3,163	3,829	3,827	3,421
	Disorders of Infancy, Childhood, Adolescence NES	2,482	2,905	2,838	3,170
	Other MH Disorders	2,974	3,301	3,226	3,162
	Delirium, Dementia, Cognitive Disorders	813	753	803	771
	Personality Disorders	873	912	792	699
	Dissociative Disorders	397	461	397	373
	Alcohol/Drug	411	447	369	344
	Diagnosis Deferred	132	82	59	63

¹ Unique Served: All duplicate records are removed.

² Encounters: A contact or admission for covered services to OHP Member – can be 1 or more per member.

TABLE 8: UNIQUE MEMBERS SERVED PER MONTH

MHO Contractors	Jul-07	Aug-07	Sep-07	Oct-07	Nov-07	Dec-07	Jan-08	Feb-08	Mar-08	Apr-07	May-07	Jun-07
ABHA	1,144	1,211	1,239	1,346	1,284	1,230	1,331	1,304	1,301	1,353	1,281	1,107
Clackamas	1,246	1,340	1,313	1,361	1,277	1,197	1,348	1,290	1,298	1,292	1,333	1,306
FamilyCare	387	378	352	355	246	235	282	265	404	477	519	429
GOBHI	1,426	1,493	1,406	1,621	1,520	1,431	1,589	1,616	1,578	1,637	1,562	1,407
JBH	2,903	3,078	2,916	3,434	3,268	3,153	3,266	3,159	3,279	3,395	3,290	3,192
LaneCare	2,842	3,009	2,901	3,135	3,092	2,951	3,221	3,209	3,240	3,388	3,301	3,201
MVBCN	3,408	3,555	3,279	3,933	3,577	3,587	3,980	3,985	3,930	4,122	3,807	3,867
Verity	4,698	4,888	4,700	4,972	4,724	4,736	4,889	4,800	5,011	5,092	4,742	4,527
Washington	1,498	1,567	1,500	1,652	1,612	1,538	1,686	1,674	1,751	1,833	1,739	1,683
Total	19,552	20,519	19,606	21,809	20,600	20,058	21,592	21,302	21,792	22,589	21,574	20,719
FFS	499	498	514	539	536	519	642	679	753	792	802	809

HOSPITAL DATA



TABLE 9: UNIQUE¹ HOSPITAL ADMISSIONS PER 1,000 MEMBERS² ENROLLED

MHO Contractors	2007		2008	
	3 rd Qtr	4 th Qtr	1 st Qtr	2 nd Qtr
ABHA	1.25	1.25	1.33	1.26
Clackamas	1.99	1.59	1.34	1.91
FamilyCare	1.38	0.28	0.37	0.80
GOBHI	0.46	0.46	0.19	0.03
JBH	1.77	1.16	1.24	0.81
LaneCare	1.91	1.95	1.63	2.02
MVBCN	0.78	0.63	0.69	0.60
Verity	2.60	2.22	2.33	2.26
Washington	1.53	1.44	1.07	1.64
Totals	1.59	1.31	1.27	1.28

(n=Total Admissions/d=Unique Enrolled per 1,000 members)

TABLE 10: UNIQUE HOSPITAL ADMISSIONS: AGE GROUPS PER 1,000 MEMBERS ENROLLED

MHO Contractors	Age Group	2007		2008	
		3 rd Qtr	4 th Qtr	1 st Qtr	2 nd Qtr
ABHA	0-17	0.1	0.3	0.2	0.2
	18-64	3.4	3.1	3.5	3.3
	65+	0.0	0.6	0.6	0.0
Clackamas	0-17	0.6	0.3	0.4	0.3
	18-64	5.0	4.4	3.4	5.4
	65+	0.4	0.0	0.5	0.0
FamilyCare	0-17	0.2	0.0	0.0	0.3
	18-64	3.4	0.8	1.0	1.7
	65+	0.0	0.0	0.0	0.0
GOBHI	0-17	0.2	0.1	0.1	0.0
	18-64	1.0	1.2	0.5	0.0
	65+	0.0	0.0	0.0	0.4
JBH	0-17	0.4	0.0	0.4	0.1
	18-64	3.9	2.8	2.7	1.9
	65+	0.6	0.6	0.2	0.2

(n=Total Admissions/d=Unique Enrolled per 1,000 members)

¹ Unique: All duplicate records are removed.² Per 1,000 members is the unique number enrolled divided by 1,000

TABLE 10: UNIQUE¹ HOSPITAL ADMISSIONS BY AGE GROUPS PER 1,000 MEMBERS² ENROLLED (*continued*)

MHO Contractors	Age Group	2007		2008	
		3 rd Qtr	4 th Qtr	1 st Qtr	2 nd Qtr
LaneCare	0-17	0.1	0.1	0.1	0.2
	18-64	4.5	4.3	3.8	4.6
	65+	0.5	2.2	1.4	0.9
MVBCN	0-17	0.3	0.2	0.2	0.1
	18-64	1.8	1.4	1.9	1.7
	65+	0.2	0.8	0.2	0.4
Verity	0-17	0.7	0.7	0.7	0.8
	18-64	5.9	5.0	5.3	5.0
	65+	0.7	0.6	0.3	0.7
Washington	0-17	0.5	0.5	0.7	0.6
	18-64	4.5	4.2	2.3	4.8
	65+	0.7	0.7	0.4	0.4
Total	0-17	0.4	0.3	0.4	0.3
	18-64	3.8	3.2	3.1	3.2
	65+	0.5	0.7	0.4	0.4

(n=Total Admissions/d=Unique Enrolled per 1,000 members)

TABLE 11: AVERAGE HOSPITAL DAYS OF SERVICE

MHO Contractors	2007		2008	
	3 rd Qtr	4 th Qtr	1 st Qtr	2 nd Qtr
ABHA	6.2	7.8	10.0	7.4
Clackamas	13.5	12.5	8.3	8.5
FamilyCare	5.2	16.6	5.3	0.0
GOBHI	6.0	8.1	15.5	17.0
JBH	4.9	5.8	5.6	7.1
LaneCare	11.6	14.3	14.2	11.4
MVBCN	10.5	13.5	9.6	15.3
Verity	8.5	9.3	8.5	9.2
Washington	14.9	9.9	8.7	8.0
Total	9.1	10.1	9.0	9.6

n=Sum Days of Service/d=Total Discharges

¹ Unique: All duplicated records are removed² Per 1,000 members is the unique number enrolled divided by 1,000

TABLE 12: AVERAGE HOSPITAL DAYS BY MHO/AGE GROUP

MHO Contractors	Age Groups	2007		2008	
		3 rd Qtr	4 th Qtr	1 st Qtr	2 nd Qtr
ABHA	0-17	6.50	1.75	6.00	4.25
	18-64	6.19	6.50	8.79	7.82
	65+	N/A	71.00	57.00	N/A
Clackamas	0-17	9.33	5.17	6.00	8.13
	18-64	14.53	13.54	8.50	8.54
	65+	14.00	N/A	9.00	N/A
FamilyCare	0-17	8.00	N/A	N/A	7.00
	18-64	4.92	16.60	5.25	13.57
	65+	N/A	N/A	N/A	N/A
GOBHI	0-17	6.00	11.00	25.00	N/A
	18-64	6.00	7.33	13.60	N/A
	65+	N/A	N/A	N/A	17.00
JBH	0-17	6.82	7.00	7.79	6.00
	18-64	4.42	5.67	4.76	7.31
	65+	11.33	9.33	26.00	2.00
LaneCare	0-17	11.50	7.00	N/A	10.60
	18-64	11.11	13.85	13.26	11.29
	65+	24.00	24.75	26.50	15.67
MVBCN	0-17	9.21	8.63	9.80	12.33
	18-64	10.83	14.00	8.46	15.07
	65+	12.00	25.00	24.00	24.00
Verity	0-17	8.00	8.10	7.31	7.85
	18-64	8.35	9.35	8.44	9.53
	65+	16.50	14.25	18.00	10.25
Washington	0-17	6.90	8.36	7.33	7.64
	18-64	16.98	9.60	9.78	8.21
	65+	14.50	23.50	9.00	5.00
Totals	0-17	7.95	7.63	7.89	7.93
	18-64	9.12	10.02	8.68	9.82
	65+	16.21	22.00	23.40	13.33

n=Sum Days of Service/d=Total Discharges

n/a=no discharges within that quarter/age group

TABLE 13: PERCENT OF HOSPITAL RE-ADMISSION WITHIN 30 DAYS

MHO Contractors	2007		2008	
	3rd Qtr	4th Qtr	1st Qtr	2nd Qtr
ABHA	21.4%	17.1%	15.2%	16.2%
Clackamas	2.1%	8.5%	9.4%	1.9%
FamilyCare	0.0%	0.0%	0.0%	0.0%
GOBHI	0.0%	0.0%	0.0%	0.0%
JBH	7.8%	6.8%	4.1%	5.4%
LaneCare	8.0%	1.5%	5.3%	2.9%
MVBCN	5.3%	4.7%	7.7%	2.0%
Verity	8.2%	8.4%	6.1%	7.1%
Washington	3.8%	5.7%	5.9%	10.0%
Total	7.2%	6.9%	6.6%	6.1%

n=Unique readmissions within 30 days/d=unique discharges

TABLE 14: TOTAL HOSPITAL RE-ADMISSION WITHIN 180 DAYS

MHO Contractors	2007		2008	
	2nd Qtr	3rd Qtr	4th Qtr	1st Qtr
ABHA	32.1%	28.6%	18.2%	24.3%
Clackamas	10.4%	27.7%	28.1%	9.3%
FamilyCare	0.0%	20.0%	25.0%	11.1%
GOBHI	0.0%	6.7%	0.0%	0.0%
JBH	12.1%	25.7%	12.2%	21.4%
LaneCare	12.0%	10.3%	28.1%	17.1%
MVBCN	10.5%	27.9%	19.2%	18.0%
Verity	13.0%	20.5%	23.2%	25.6%
Washington	7.7%	24.5%	17.6%	26.0%
Total	12.1%	21.7%	20.8%	21.0%

n=Unique readmissions within 180 days/d=unique discharges

FIGURE 5: TOTAL SEEN BY OUTPATIENT WITHIN 7 DAYS OF HOSPITAL DISCHARGE
 (All re-admissions are included in the hospital discharge numbers. All Mental Health Diagnoses are included in the outpatient numbers.)
 (n=number seen within 7 days/d= hospital discharges.)

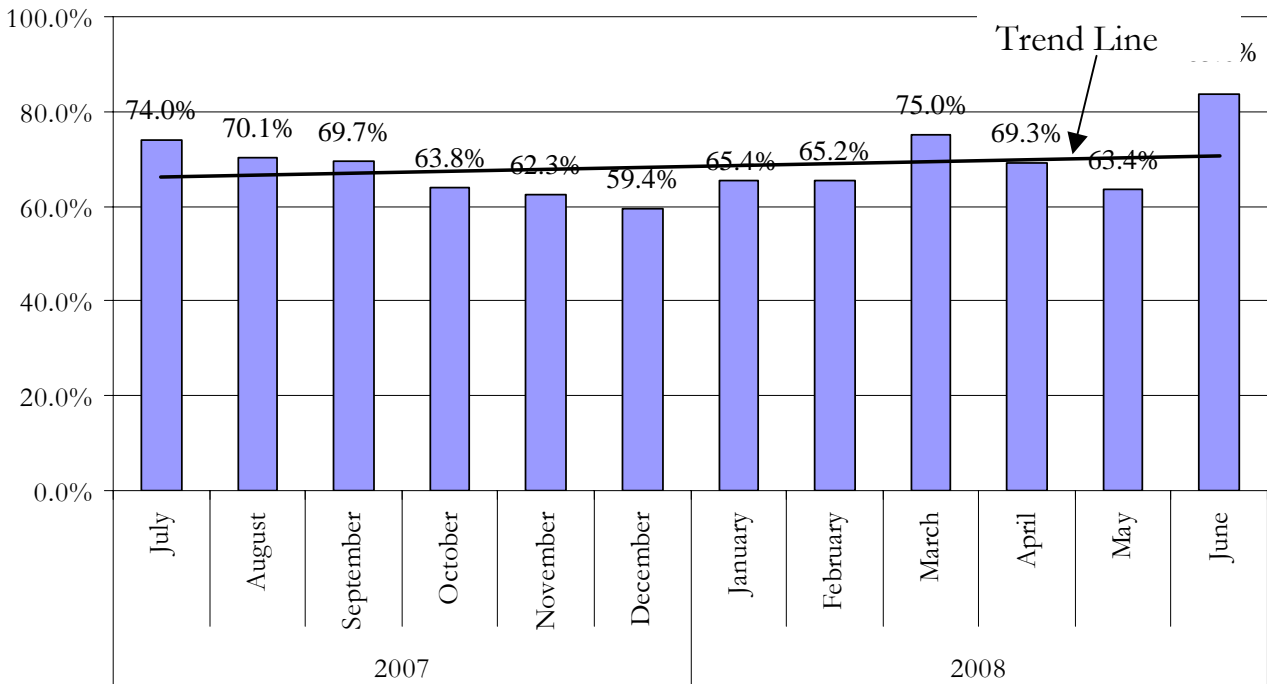
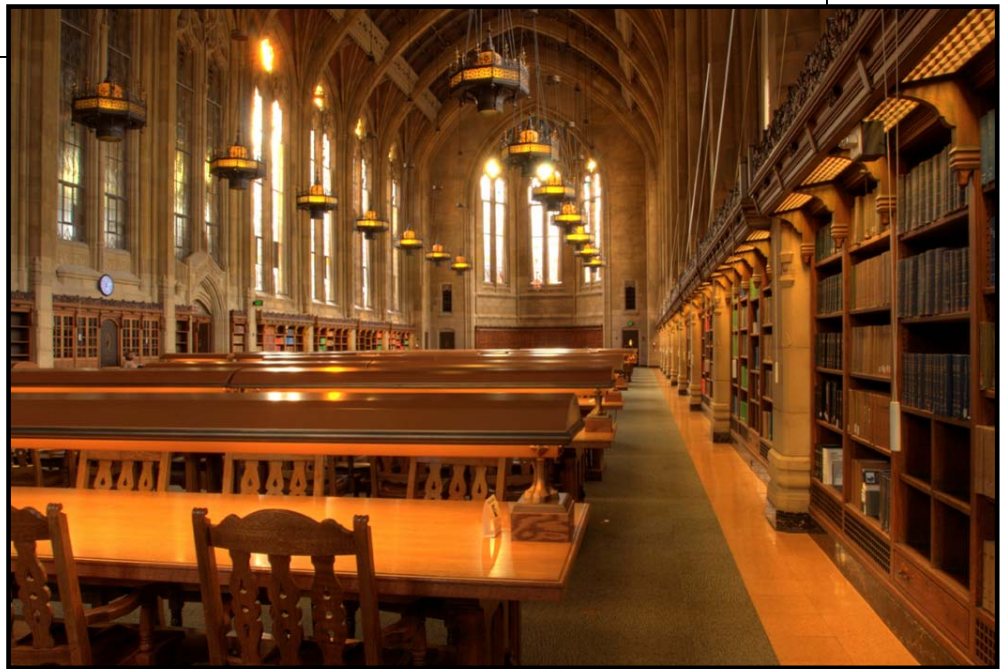


TABLE 15: SEEN BY OUTPATIENT WITHIN 7 DAYS OF HOSPITAL DISCHARGE
 (All re-admissions are included in the hospital discharge numbers. All mental health diagnoses are included in the outpatient numbers).

MHO Contractors	2007		2008	
	2 nd Qtr	3 rd Qtr	4 th Qtr	1 st Qtr
ABHA	71.4%	57.1%	60.6%	73.0%
Clackamas	93.8%	59.6%	81.3%	70.4%
FamilyCare	30.8%	0.0%	25.0%	66.7%
GOBHI	64.3%	66.7%	83.3%	0.0%
JBH	65.5%	63.5%	66.2%	75.0%
LaneCare	76.0%	51.5%	66.7%	75.7%
MVBCN	66.7%	65.1%	61.5%	62.0%
Verity	67.4%	60.2%	55.5%	53.0%
Washington	67.3%	67.9%	73.5%	78.0%
Total	69.5%	60.1%	62.9%	65.7%

(n=Seen Within 7 days/d=Hospital Discharges)

GLOSSARIES



MHO UTILIZATION REPORT GLOSSARY

ADDICTIONS AND MENTAL HEALTH DIVISION (AMH):

The division office of the Department of Human Services (DHS) responsible for the administration of mental health services for the State of Oregon.

DIAGNOSIS CATEGORY:

Diagnosis categories are defined by the grouping of diagnoses in the most recent version of the American Psychiatric Association's Diagnostic and Statistical Manual (DSM).

ELIGIBLE:

An individual eligible for services under the OHP, but may not be enrolled into an MHO. Includes enrolled and fee-for-service.

ENCOUNTER:

An outpatient contact(s) or Acute Inpatient Hospital Psychiatric Care admission(s) for Covered Services provided to an OHP Member.

ENROLLED (ENROLLEE):

Eligible for the Oregon Health Plan (OHP) and enrolled in an MHO. The enrollment numbers refer to the number enrolled at any point within the quarter.

FEE-FOR-SERVICE (FFS):

Individuals who are eligible for the OHP, but are not enrolled with an MHO. This is also known as an "open card".

MENTAL HEALTH ORGANIZATION (MHO):

A Prepaid Health Plan under contract with DHS to provide Covered Services under the OHP Medicaid Demonstration Project and State Children's Health Insurance Program (SCHIP). MHOs can be FCHPs, CMHPs, or private MHOs or combinations thereof.

OREGON HEALTH PLAN (OHP):

Oregon's health care reform effort consisting of a Medicaid Demonstration Project, State Children's Health Insurance Program, an individual insurance program for persons excluded from health insurance coverage due to pre-existing health conditions, and a group insurance program for small businesses. One objective of this reform effort includes universal coverage for Oregonians. In the context of this report, OHP refers to all individuals on FFS MHO Utilization Report Glossary

MHO UTILIZATION REPORT GLOSSARY *(Continued)*

PERCENT ENROLLEES SERVED:

This is a general measure of access, but more related to utilization of services. It is a percentage calculated by summing the unique enrollees seen during a given time period and dividing that number by the total enrollees for that time period. For example, if there is 10,000 enrollees statewide in a given month and during that same month 500 of those enrollees receive services, the percent of enrollees served is 5%.

PERCENTAGE RATE:

A percent of the total enrollees that received services within a given time period.

SERVICE CATEGORY:

Service category is a descriptive grouping of service codes (BA, ECC, and CPT) that are similar procedurally.

UNIQUE SERVED:

Unduplicated number of individuals receiving mental health services.

UNIQUE ENCOUNTERS:

Unduplicated services received by an individual(s) within a specific time period. One individual may have had several services provided – each service would be part of the calculations.

DIAGNOSTIC CATEGORIES GLOSSARY WITH SPECIFIC DSMIV CODES

The following codes include, but are not limited to procedure codes used by service providers within the reporting period for this report.

ADHD:

314; 314.0; 314.00; 314.01; 314.1; 314.9; 314.90

ADJUSTMENT DISORDERS:

309.00; 309.1; 309.2; 309.21; 309.22; 309.23; 309.24; 309.28; 309.29; 309.3; 309.4;
309.40; 309.80; 309.82; 309.83; 309.89; 309.9

ALCOHOL/DRUG:

291.3; 291.4; 291.5; 291.81; 291.89; 291.9; 292.0; 292.11; 292.12; 292.2; 292.84;
292.9; 303.00; 303.01; 303.02; 303.90; 303.91; 303.92; 303.93; 304.00; 304.01;
304.03; 304.10; 304.20; 304.23; 304.3; 304.30; 304.31; 304.33; 304.40; 304.41;
304.42; 304.43; 304.70; 304.71; 304.80; 304.81; 304.83; 304.90; 305.00; 305.01;
305.02; 305.03; 305.1; 305.20; 305.21; 305.22; 305.23; 305.30; 305.40; 305.50;
305.60; 305.61; 305.62; 305.70; 305.71; 305.72; 305.73; 305.90; 305.91

ANXIETY DISORDER OTHER THAN PTSD:

293.84; 300.0; 300.00; 300.01; 300.02; 300.09; 300.10; 300.20; 300.21; 300.22;
300.23; 300.29; 300.3; 308.3; 308.9

BEHAVIOR DISORDERS:

312.00; 312.01; 312.02; 312.30; 312.31; 312.32; 312.34; 312.39; 312.4; 312.8;
312.80; 312.81; 312.82; 312.89; 312.9; 313.69; 313.81

DELIRIUM, DEMENTIA, COGNITIVE DISORDERS:

290.0; 290.10; 290.11; 290.12; 290.13; 290.20; 290.21; 290.3; 290.40; 290.41;
290.42; 290.43; 291.0; 291.2; 292.82; 292.83; 292.89; 293.0; 293.84; 294.0; 294.1;
294.10; 294.11; 294.8; 294.9; 294.90; 310.0; 310.1; 310.10

DIAGNOSIS DEFERRED:

799.9

DIAGNOSTIC CATEGORIES GLOSSARY WITH SPECIFIC DSM-IV CODES

(CONTINUED)

DISORDERS OF INFANCY, CHILDHOOD, ADOLESCENCE NES:

299.10; 307.0; 307.20; 307.22; 307.23; 307.3; 307.6; 307.7; 307.9; 313.0; 313.23;
313.82; 313.89; 313.9; 315.00; 315.31; 315.32; 315.39; 315.4; 315.9; 317.0; 318.0;
318.1; 318.2; 319.0; 787.6

DISSOCIATIVE DISORDERS:

300.12; 300.13; 300.14; 300.15; 300.6

MAJOR DEPRESSIVE DISORDERS:

296.2; 296.20; 296.21; 296.22; 296.23; 296.24; 296.25; 296.26; 296.3; 296.30;
296.31; 296.32; 296.33; 296.34; 296.35; 296.36

MANIA/BIPOLAR DISORDERS:

296; 296.0; 296.00; 296.01; 296.02; 296.03; 296.04; 296.05; 296.06; 296.09; 296.10;
296.11; 296.12; 296.13; 296.15; 296.4; 296.40; 296.41; 296.42; 296.43; 296.44;
296.45; 296.46; 296.50; 296.51; 296.52; 296.53; 296.54; 296.55; 296.56; 296.6;
296.60; 296.61; 296.62; 296.63; 296.64; 296.65; 296.66; 296.7; 296.70; 296.8;
296.80; 296.81; 296.82; 296.89

MOOD DISORDERS WITHOUT BEHAVIOR, MANIA AND BIPOLAR:

293.83; 296.9; 296.90; 296.99; 300.4; 300.40; 301.13; 311; 311.0; 311.00

OTHER MENTAL HEALTH (MH) DISORDERS:

293.89; 293.9; 296.74; 300.11; 300.16; 300.19; 300.7; 300.81; 300.82; 300.9; 302.2;
302.4; 302.70; 302.73; 302.9; 305.93; 306.3; 307.1; 307.42; 307.44; 307.45; 307.46;
307.47; 307.50; 307.51; 307.52; 307.53; 307.59; 307.80; 307.89; 307.9; 308.0;
308.1; 308.2; 309.29; 316; 780.52; 780.59; 968.9; 995.2; 995.50; 995.52; 995.53;
995.54; 995.81; V61.0; V61.10; V61.20; V61.21; V61.8; V61.9; V62.81; V62.82;
V62.89; V62.9; V65.40; V71.01; V71.02; V71.09

PERSONALITY DISORDERS:

301.0; 301.10; 301.12; 301.20; 301.22; 301.3; 301.4; 301.50; 301.6; 301.7; 301.81;
301.82; 301.84; 301.89; 301.9; 301.83

DIAGNOSTIC CATEGORIES GLOSSARY
WITH SPECIFIC DSMIV CODES
(Continued)

PERVASIVE DEVELOPMENTAL DISORDERS:

299.0; 299.00; 299.80

POST-TRAUMATIC STRESS DISORDER (PTSD):

309.81

SCHIZOPHRENIA, OTHER PSYCHOTIC DISORDERS:

293.81; 293.82; 295.0; 295.00; 295.02; 295.03; 295.10; 295.11; 295.12; 295.13;
295.14; 295.15; 295.20; 295.22; 295.23; 295.24; 295.3; 295.30; 295.31; 295.32;
295.33; 295.34; 295.35; 295.40; 295.42; 295.43; 295.45; 295.50; 295.60; 295.61;
295.62; 295.64; 295.65; 295.7; 295.70; 295.71; 295.73; 295.74; 295.75; 295.80;
295.82; 295.9; 294.90; 295.91; 295.92; 295.93; 295.94; 295.95; 297.1; 297.2; 297.3;
297.30; 297.9; 298.0; 298.8; 298.9; 298.90; 299.01

SERVICE CATEGORIES GLOSSARY WITH SPECIFIC PROCEDURES CODES

ALTERNATIVES TO INPATIENT HOSPITALIZATION:

H0035; H2013

ASSERTIVE COMMUNITY TREATMENT:

H0039

ASSESSMENT & EVALUATION:

90801; 90802; 96100; H0002; H0031

CASE MANAGEMENT:

T1016

CHILD & FAMILY TEAM MEETINGS:

H0032

CONSULTATION:

90882; 90887; 99255

CRISIS INTERVENTION:

S9484

FAMILY THERAPY:

90846; 90849

GROUP THERAPY:

90853; 90857

INDIVIDUAL THERAPY:

90804; 90806; 90807; 90808; 90809; 90810; 90812; 90813; 90814; 90815; H0004

INDIVIDUAL THERAPY WITH MEDICATION MANAGEMENT:

90805; 90811

INTERPRETIVE SERVICES:

T1013

**SERVICE CATEGORIES GLOSSARY WITH
SPECIFIC PROCEDURES CODES**
(Continued)

LEVEL OF NEED DETERMINATION:

T1023

MEDICATION MANAGEMENT:

90862; H0033; H0034; H2010

Multi-Systemic Therapy (MST) for juveniles:

H2033

OUTPATIENT THERAPY:

90847; 90849; 90899; H0045; H2011; H2023; S9484; T1005

PSYCHIATRIC DAY TREATMENT SERVICES (PDTs):

H0037; H2012

PSYCHIATRIC RESIDENTIAL TREATMENT SERVICES (PRTS) – A & E

H0018

PSYCHIATRIC RESIDENTIAL TREATMENT SERVICES (PRTS) – NON-A&E:

H0019

RESPIRE CARE:

H0045; S5151; S9125

SKILLS TRAINING:

G0176; G0177; H2014; H2027; H2032

SUB-ACUTE CARE:

H2013; H2023

SUPPORTIVE DAY PROGRAM:

H0036

TREATMENT FOSTER CARE:

S5145; S5146

WRAPAROUND SERVICES:

H0038; H2021; H2022; H2027