

*Department of Human Services
Addictions and Mental Health Division*

Oregon Health Plan Mental Health Utilization Quarterly Report

*April 1, 2007
Through
March 31, 2008*

**Report Produced Quarterly by
Program Analysis and Evaluation Team
OCTOBER 2008**



EXECUTIVE SUMMARY
REPORT ON OREGON HEALTH PLAN (OHP)
UTILIZATION AND ENROLLMENT FOR
MENTAL HEALTH SERVICES:
APRIL 2007 THROUGH MARCH 2008

The Mental Health Organization (MHO) Utilization Quarterly Report for the period of April 1, 2007 through March 31, 2008, contains enrollment, unique served and hospitalization data. The data for this report were pulled October 16, 2008. All information came from the Division of Medical Assistance Programs' (DMAP) Decision Support/Surveillance and Utilization Review System (DSSURS) and is comparable to the report released in July 2008.

Population

- This report reflects only Medicaid members who were eligible, enrolled, and received mental health services during the report period.
- The acute care admission population is any enrolled Medicaid member who was admitted for inpatient psychiatric treatment.
- Those who are receiving mental health services and alcohol and drug treatment are included in this report.

Limitations

- This report does not include tests of the statistical significance of apparent differences among providers or across time periods.
- The report is a “snap-shot” in time for the specific report being created and is comparable to the report released in April 2008.
- Acute hospitalization data includes and is not limited to transfers from one facility to another and/or re-admitted within a 24-hour time frame.
- There is a 180-day lag between the times a service is delivered and the time the services is contractually required to be billed.
- The enrollment numbers refer to the number enrolled at any point within the quarter.

Formula

- The calculations for the unique enrollees and/or served is dividing the number of total enrollees by the number served within the same time period.
- The penetration rate, or percentage rate, is a general measure of access and is related to the utilization of services.

Report Schedule: This report is created on a quarterly basis.

TABLE OF CONTENTS

The format and contents are constructed as follows:

- Figures are used to illustrate trends in statewide data.
- Tables are used to summarize quarterly data at the MHO level. Some tables include FFS and All Eligibles.



Executive Summary	i
-------------------------	---

Enrollment Data:

Table 1: Unique Members Enrolled by MHO	1
Figure 1: Total Unique Members Enrolled by Age Groups	1
Table 2: Unique Members Enrolled by Age Groups/MHO	2
Table 3: Enrollment Numbers per Month.....	3

Served Data:

Table 4: Unique Members Served by MHO and Percentage Rate.....	4
Figure 2: Total Unique Members Served by Age Groups	4
Table 5: Unique Served by MHO/Age Group and Percentage Rate	5
Figure 3: Total Unique Served by Ethnicity	6
Table 6: Unique Served by MHO/Ethnicity and Percentage Rate	6
Figure 4: Total All Quarters: Unique Encounters by Diagnostic Groups	9
Table 7: Unique Served Encounters by MHO/Diagnostic Groups.....	9
Table 8: Unique Members Served per Month.....	10

Hospital Data:

Table 9: Unique Hospital Admissions per 1,000 Members Enrolled	11
Table 10: Unique Hospital Admissions: Age Groups per 1,000 Members Enrolled ...	11
Table 11: Average Hospital Days of Service.....	12
Table 12: Average Hospital Days by MHO/Age Group	13
Table 13: Percent of Hospital Re-Admission within 30 days	14
Table 14: Percent of Hospital Re-Admission within 180 days.....	14
Figure 5: Total Seen by Outpatient within 7 Days of Hospital Discharge.....	15
Table 15: Seen by Outpatient within 7 Days of Hospital Discharge	15

Glossaries:

MHO Utilization Report Glossary	16
Diagnostic Categories Glossary	18
Service Categories Glossary	21

ENROLLMENT DATA

- ❖ Enrolled: Eligible for OHP and enrolled in an MHO
- ❖ Eligibles: Both Enrolled and FFS
- ❖ Fee-For-Service (FFS): Eligible for OHP and NOT enrolled with an MHO (Open Card)



TABLE 1: UNIQUE MEMBERS ENROLLED BY MHO

MHO Contractors	2007						2008	
	2 nd Qtr	% Enrolled	3 rd Qtr	% Enrolled	4 th Qtr	% Enrolled	1 st Qtr	% Enrolled
ABHA	26,017	7.0%	25,680	6.9%	25,598	6.9%	26,293	7.0%
Clackamas	25,341	6.8%	25,579	6.9%	25,815	6.9%	26,139	7.0%
FamilyCare	10,766	2.9%	10,871	2.9%	10,792	2.9%	10,679	2.9%
GOBHI	30,909	8.3%	30,732	8.3%	30,517	8.2%	30,886	8.2%
JBH	63,789	17.2%	63,859	17.2%	63,948	17.2%	64,463	17.2%
LaneCare	35,468	9.6%	35,550	9.6%	35,466	9.5%	35,567	9.5%
MVBCN	73,531	19.8%	73,989	19.9%	74,435	20.0%	75,060	20.0%
Verity	72,287	19.5%	72,313	19.5%	72,549	19.5%	72,680	19.4%
Washington	32,364	8.7%	32,718	8.8%	32,603	8.8%	32,654	8.7%
Total Enrolled	370,472	100%	371,291	100%	371,723	100%	374,421	100%

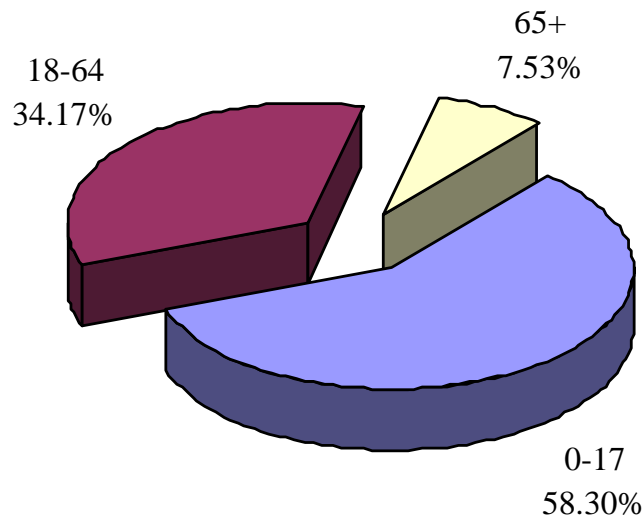
n=Unique Enrolled/d=Total Enrolled

	2 nd Qtr	% All Eligibles	3 rd Qtr	% All Eligibles	4 th Qtr	% All Eligibles	1 st Qtr	% All Eligibles
Total Enrolled	370,472	90.9%	371,291	90.9%	371,723	90.8%	371,421	88.7%
FFS ³	37,224	9.1%	37,046	9.1%	37,832	9.2%	47,243	11.3%
All Eligibles ²	407,696	100%	408,337	100%	409,555	100%	418,664	100%

n=Total Enrolled/d=All Eligibles

n=FFS/d=All Eligibles

FIGURE 1: TOTAL UNIQUE MEMBERS ENROLLED BY AGE GROUPS



³ Fee-For-Service (FFS): Eligible for OHP and NOT enrolled with an MHO (Open Card)

² Eligibles: Both Enrolled and FFS

TABLE 2: UNIQUE MEMBERS Enrolled¹ by Age Groups & Percentage by MHO Total

MHO Contractors	Age Groups	2007						2008	
		2 nd Qtr	% by MHO Qtr Total ²	3 rd Qtr	% by MHO Qtr Total	4 th Qtr	% by MHO Qtr Total	1 st Qtr	% by MHO Qtr Total
ABHA	0-17	15,135	58.2%	15,139	59.0%	15,174	59.3%	15,784	60.0%
	18-64	9,116	35.0%	8,768	34.1%	8,674	33.9%	8,768	33.3%
	65 +	1,766	6.8%	1,773	6.9%	1,750	6.8%	1,741	6.6%
Clackamas	0-17	14,916	58.9%	15,214	59.5%	15,461	59.9%	15,857	60.7%
	18-64	8,196	32.3%	8,132	31.8%	8,109	31.4%	8,085	30.9%
	65 +	2,229	8.8%	2,233	8.7%	2,245	8.7%	2,197	8.4%
FamilyCare	0-17	6,196	57.6%	6,367	58.6%	6,397	59.3%	6,388	59.8%
	18-64	4,088	38.0%	4,024	37.0%	3,919	36.3%	3,814	35.7%
	65 +	482	4.5%	480	4.4%	476	4.4%	477	4.5%
GOBHI	0-17	18,102	58.6%	18,245	59.4%	18,267	59.9%	18,691	60.5%
	18-64	10,454	33.8%	10,153	33.0%	9,888	32.4%	9,836	31.8%
	65 +	2,353	7.6%	2,334	7.6%	2,362	7.7%	2,359	7.6%
JBH	0-17	34,148	53.5%	34,656	54.3%	34,926	54.6%	35,650	55.3%
	18-64	24,893	39.0%	24,535	38.4%	24,341	38.1%	24,143	37.5%
	65 +	4,748	7.4%	4,668	7.3%	4,681	7.3%	4,670	7.2%
LaneCare	0-17	18,773	52.9%	19,083	53.7%	19,162	54.0%	19,442	54.7%
	18-64	14,456	40.8%	14,268	40.1%	14,102	39.8%	13,928	39.2%
	65 +	2,239	6.3%	2,199	6.2%	2,202	6.2%	2,197	6.2%
MVBCN	0-17	45,234	61.5%	46,040	62.2%	46,672	62.7%	47,531	63.3%
	18-64	23,530	32.0%	23,222	31.4%	23,002	30.9%	22,778	30.3%
	65 +	4,767	6.5%	4,727	6.4%	4,761	6.4%	4,751	6.3%
Verity	0-17	39,080	54.1%	39,421	54.5%	39,923	55.0%	40,281	55.4%
	18-64	26,446	36.6%	26,121	36.1%	25,872	35.7%	25,606	35.2%
	65 +	6,761	9.4%	6,771	9.4%	6,754	9.3%	6,793	9.3%
Washington	0-17	21,098	65.2%	21,578	66.0%	21,601	66.3%	21,814	66.8%
	18-64	8,487	26.2%	8,363	25.6%	8,209	25.2%	8,045	24.6%
	65 +	2,779	8.6%	2,777	8.5%	2,793	8.6%	2,795	8.6%
Total by Quarter	0-17	212,682	57.4%	215,743	58.1%	217,583	58.5%	221,438	59.1%
	18-64	129,666	35.0%	127,586	34.4%	126,116	33.9%	125,003	33.4%
	65 +	28,124	7.6%	27,962	7.5%	28,024	7.5%	27,980	7.5%

¹ Enrolled: Eligible for OHP and enrolled in an MHO

² Percentage formula: n=unique enrolled by age group/d=MHO total enrolled

TABLE 3: ENROLLMENT NUMBERS PER MONTH

MHO Contractor	Apr-07	May-07	Jun-07	Jul-07	Aug-07	Sep-07	Oct-06	Nov-06	Dec-06	Jan-08	Feb-08	Mar-08
ABHA	23,930	24,265	24,107	23,758	23,778	23,668	23,889	23,741	23,673	24,105	25,063	24,867
Clackamas	23,598	23,940	24,000	23,846	23,981	24,045	24,165	24,070	23,996	24,340	25,176	24,744
FamilyCare	9,650	10,157	10,219	9,947	9,649	10,137	10,164	10,160	10,034	10,130	10,423	10,102
GOBHI	28,465	28,880	28,717	28,548	28,442	28,190	28,502	28,123	28,121	28,477	29,403	29,120
JBH	59,083	59,976	59,807	59,352	59,550	59,149	59,833	59,588	59,471	59,937	61,420	60,796
LaneCare	32,801	33,268	33,110	32,940	33,173	33,176	33,492	33,225	33,022	33,307	34,165	33,567
MVBCN	67,964	69,101	69,107	68,470	68,890	68,606	69,479	69,060	69,156	69,679	71,683	70,622
Verity	67,996	68,886	68,785	68,072	68,504	68,919	69,080	68,598	68,117	68,383	69,910	69,098
Washington	29,712	30,322	30,348	30,158	30,435	30,370	30,601	30,254	30,073	30,185	31,326	30,653
Monthly Totals	343,199	348,795	348,200	345,091	346,402	346,260	349,205	346,819	345,663	348,543	358,569	353,569
% Monthly Increase/Decrease	1.60%	-0.17%	-0.90%	0.38%	-0.04%	0.84%	-0.69%	-0.33%	0.83%	2.80%	-1.41%	
Eligibles	407,134	408,164	407,789	407,807	408,703	408,500	409,889	409,548	409,227	412,856	422,663	420,473
FFS	63,935	59,369	59,589	62,716	62,301	62,240	60,684	62,729	63,564	64,313	64,094	66,904

SERVICE DATA

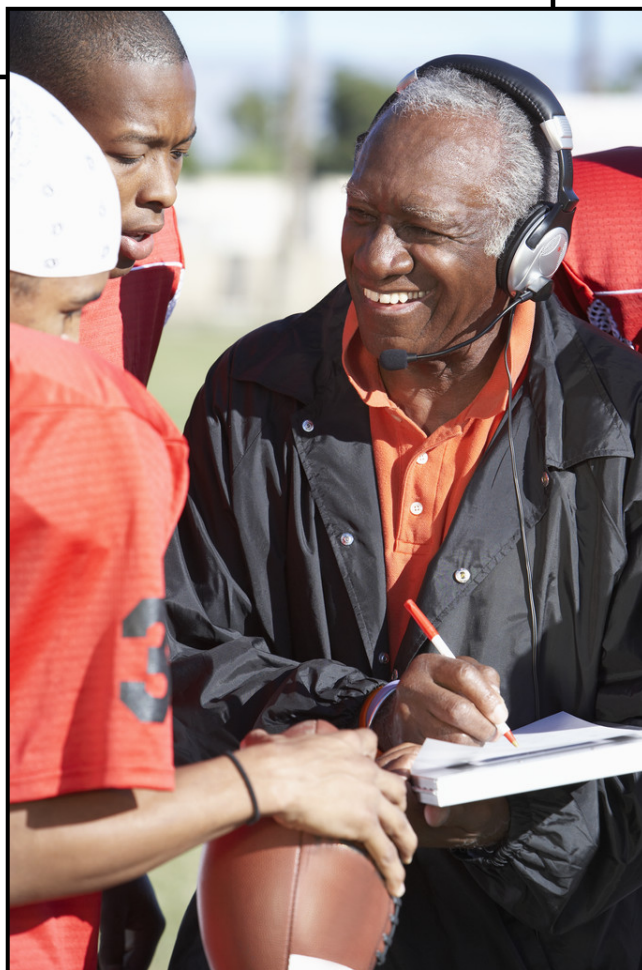
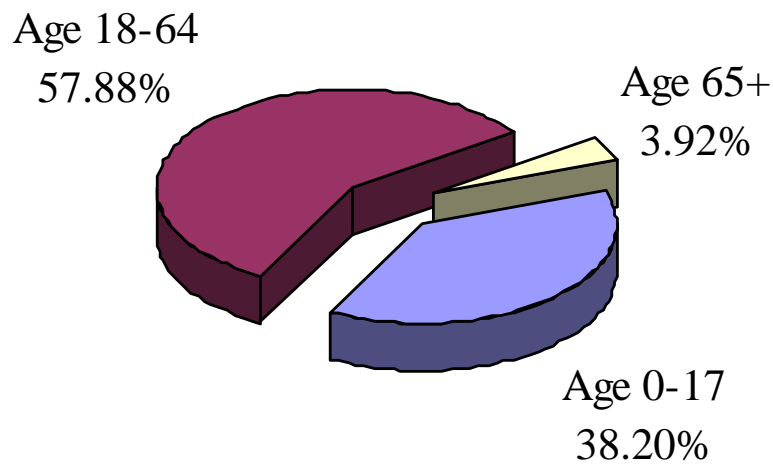


TABLE 4: UNIQUE MEMBERS SERVED BY MHO AND PERCENTAGE² OF ENROLLEES SERVED

MHO Contractors	2007						2008	
	2 nd Qtr	% Rate	3 rd Qtr	% Rate	4 th Qtr	% Rate	1 st Qtr	% Rate
ABHA	2,403	9.2%	2,206	8.6%	2,325	9.1%	2,344	8.9%
Clackamas	2,535	10.0%	2,378	9.3%	2,365	9.2%	2,394	9.2%
FamilyCare	748	6.9%	741	6.8%	593	5.5%	678	6.3%
GOBHI	2,913	9.4%	2,725	8.9%	2,877	9.4%	3,012	9.8%
JBH	6,219	9.7%	5,577	8.7%	5,982	9.4%	5,845	9.1%
LaneCare	5,163	14.6%	4,983	14.0%	5,183	14.6%	5,358	15.1%
MVBCN	6,668	9.1%	6,408	8.7%	7,038	9.5%	7,284	9.7%
Verity	8,759	12.1%	8,510	11.8%	8,188	11.3%	8,277	11.4%
Washington	2,847	8.8%	2,806	8.6%	2,838	8.7%	3,024	9.3%
Total Served	38,255	10.3%	36,334	9.8%	37,389	10.1%	38,216	10.2%
FFS	611	1.6%	638	1.7%	673	1.8%	878	2.0%

FIGURE 2: TOTAL UNIQUE MEMBERS SERVED BY AGE GROUPS



² Percentage Formula: n=Unique Served/d=Unique Enrolled.

TABLE 5: UNIQUE¹ SERVED BY MHO/AGE GROUP AND PERCENTAGE² OF ENROLLEES SERVED

MHO Contractors	Age Groups	2007						2008	
		2 nd Qtr	Rate	3 rd Qtr	Rate	4 th Qtr	Rate	1 st Qtr	Rate
ABHA	0-17	995	6.6%	834	5.5%	878	5.8%	911	5.8%
	18-64	1332	14.6%	1295	14.8%	1368	15.8%	1356	15.5%
	65+	76	4.3%	77	4.3%	79	4.5%	77	4.4%
Clackamas	0-17	996	6.7%	955	6.3%	924	6.0%	914	5.8%
	18-64	1453	17.7%	1352	16.6%	1368	16.9%	1407	17.4%
	65+	86	3.9%	71	3.2%	73	3.3%	73	3.3%
FamilyCare	0-17	323	5.2%	304	4.8%	234	3.7%	287	4.5%
	18-64	415	10.2%	430	10.7%	355	9.1%	383	10.0%
	65+	10	2.1%	7	1.5%	4	0.8%	8	1.7%
GOBHI	0-17	1254	6.9%	1101	6.0%	1176	6.4%	1203	6.4%
	18-64	1559	14.9%	1520	15.0%	1603	16.2%	1704	17.3%
	65+	100	4.2%	104	4.5%	98	4.1%	105	4.5%
JBH	0-17	2457	7.2%	2058	5.9%	2339	6.7%	2345	6.6%
	18-64	3582	14.4%	3355	13.7%	3473	14.3%	3351	13.9%
	65+	180	3.8%	164	3.5%	170	3.6%	149	3.2%
LaneCare	0-17	2065	11.0%	1864	9.8%	1947	10.2%	2037	10.5%
	18-64	2984	20.6%	3004	21.1%	3111	22.1%	3188	22.9%
	65+	114	5.1%	115	5.2%	125	5.7%	133	6.1%
MVBCN	0-17	2777	6.1%	2559	5.6%	2768	5.9%	2953	6.2%
	18-64	3642	15.5%	3593	15.5%	4016	17.5%	4095	18.0%
	65+	249	5.2%	256	5.4%	254	5.3%	236	5.0%
Verity	0-17	2951	7.6%	2837	7.2%	2846	7.1%	2776	6.9%
	18-64	5245	19.8%	5154	19.7%	4874	18.8%	4976	19.4%
	65+	563	8.3%	519	7.7%	468	6.9%	525	7.7%
Washington	0-17	1052	5.0%	1087	5.0%	1072	5.0%	1202	5.5%
	18-64	1634	19.3%	1587	19.0%	1642	20.0%	1692	21.0%
	65+	161	5.8%	132	4.8%	124	4.4%	130	4.7%
Total Served	0-17	14,870	7.0%	13,599	6.3%	14,184	6.5%	14,628	6.6%
	18-64	21,846	16.8%	21,290	16.7%	21,810	17.3%	22,152	17.7%
	65+	1,539	5.5%	1,445	5.2%	1,395	5.0%	1,436	5.1%

¹ Unique Served: All duplicate records are removed.² Percentage Formula: n=Unique Served/d=Unique Enrolled.

FIGURE 3: TOTAL UNIQUE¹ SERVED BY ETHNICITY

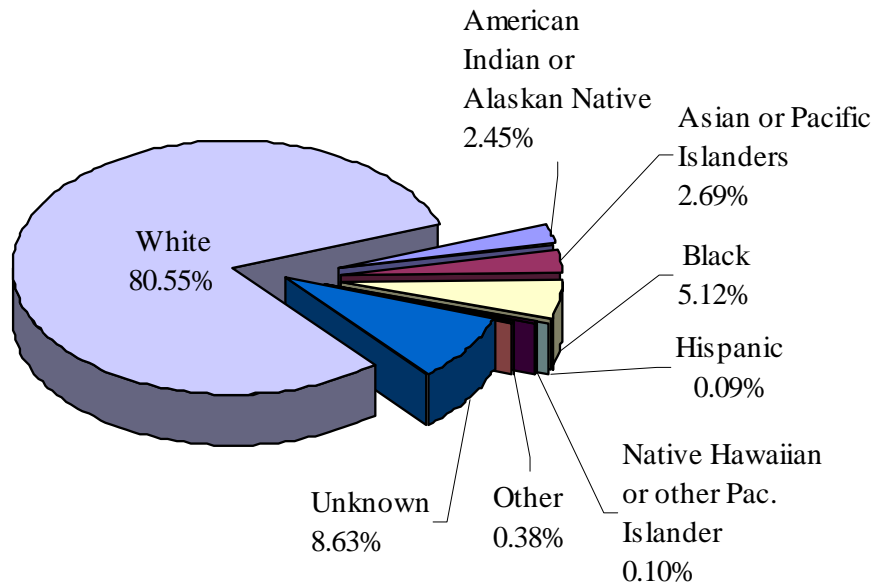


TABLE 6: UNIQUE SERVED BY MHO/ETHNICITY AND PERCENTAGE² OF ENROLLEES SERVED

MHO	Race Description	2007						2008	
		2 nd Qtr	Rate	3 rd Qtr	Rate	4 th Qtr	Rate	1 st Qtr	Rate
ABHA	Am. Indian/Alaskan Ntv	34	5.0%	45	7.4%	50	8.5%	37	6.4%
	Asian or Pacific Islanders	9	3.9%	6	2.8%	4	1.8%	7	3.0%
	Black	36	11.5%	26	8.7%	21	7.6%	21	7.5%
	Hispanic	0	0.0%	0	0.0%	0	0.0%	0	0.0%
	Ntv Hawaiian/Pac. Islander	3	6.3%	4	8.3%	8	16.7%	6	14.0%
	Other	4	23.5%	7	31.8%	9	31.0%	9	20.9%
	Unknown	123	3.2%	142	3.4%	145	3.3%	144	3.1%
	White	2,194	10.7%	1,976	9.8%	2,088	10.4%	2,120	10.3%
Clackamas	Am. Indian/Alaskan Ntv	67	21.8%	52	16.4%	43	14.4%	46	15.1%
	Asian or Pacific Islanders	40	8.0%	32	6.2%	33	6.6%	34	6.8%
	Black	61	10.7%	62	10.8%	56	9.2%	60	9.9%
	Hispanic	2	0.6%	1	5.6%	1	5.9%	1	6.3%
	Ntv Hawaiian/Pac. Islander	2	3.3%	0	0.0%	0	0.0%	3	4.2%
	Other	8	34.8%	5	19.2%	1	2.4%	6	11.3%
	Unknown	170	3.2%	181	3.2%	176	3.0%	166	2.8%
	White	2,185	12.0%	2,045	11.1%	2,055	11.2%	2,078	11.2%

Note: Current MMIS does not support federal regulations concerning race and ethnic identification. Previous Hispanic identifications are now included in the unknown category.

¹ Unique Served: All duplicate records are removed.

² Percentage Formula: n=Unique Served/d=Unique Enrolled.

TABLE 6: UNIQUE¹ SERVED BY MHO/ETHNICITY AND PERCENTAGE² OF ENROLLEES SERVED (continued)

MHO	Race Description	2007						2008	
		2 nd Qtr	Rate	3 rd Qtr	Rate	4 th Qtr	Rate	1 st Qtr	Rate
FamilyCare	Am. Indian/Alaskan Ntv	18	11.5%	20	13.4%	16	11.0%	25	15.6%
	Asian or Pacific Islanders	30	5.0%	24	4.0%	6	1.0%	16	2.8%
	Black	58	5.2%	58	5.0%	48	4.3%	51	4.6%
	Hispanic	0	0.0%	0	0.0%	0	0.0%	0	0.0%
	Ntv Hawaiian/Pac. Islander	0	0.0%	2	2.8%	1	1.4%	1	1.6%
	Other	5	31.3%	11	47.8%	3	10.0%	5	13.5%
	Unknown	41	2.7%	30	1.7%	34	1.9%	56	3.1%
	White	596	8.4%	596	8.4%	485	6.9%	524	7.6%
GOBHI	Am. Indian/Alaskan Ntv	59	10.8%	56	10.5%	54	10.4%	59	11.5%
	Asian or Pacific Islanders	13	7.8%	7	4.6%	13	8.3%	6	3.8%
	Black	25	7.9%	43	15.0%	29	10.5%	38	13.3%
	Hispanic	5	0.9%	5	83.3%	5	100.0%	5	125.0%
	Ntv Hawaiian/Pac. Islander	2	3.2%	1	1.7%	1	1.7%	2	3.2%
	Other	4	12.9%	4	12.5%	1	2.8%	9	16.7%
	Unknown	294	4.1%	258	3.2%	345	4.3%	323	4.0%
	White	2,511	11.4%	2,351	10.8%	2,429	11.3%	2,570	11.9%
JBH	Am. Indian/Alaskan Ntv	193	11.9%	169	10.8%	201	13.1%	180	12.0%
	Asian or Pacific Islanders	16	4.8%	10	2.8%	20	5.8%	20	6.0%
	Black	70	10.1%	53	7.8%	71	10.4%	61	9.0%
	Hispanic	4	1.0%	4	25.0%	4	30.8%	2	16.7%
	Ntv Hawaiian/Pac. Islander	10	11.2%	8	8.2%	3	3.1%	7	6.5%
	Other	17	36.2%	17	19.8%	34	24.5%	33	16.8%
	Unknown	505	7.3%	450	5.6%	484	5.7%	510	5.7%
	White	5,404	10.1%	4,866	9.2%	5,165	9.8%	5,032	9.5%
LaneCare	Am. Indian/Alaskan Ntv	92	17.5%	81	16.0%	82	16.0%	79	15.6%
	Asian or Pacific Islanders	30	6.7%	29	6.5%	34	7.8%	32	7.7%
	Black	126	13.3%	117	12.9%	118	13.1%	114	12.5%
	Hispanic	2	0.8%	2	22.2%	3	30.0%	4	33.3%
	Ntv Hawaiian/Pac. Islander	1	1.9%	3	5.1%	4	7.0%	3	4.9%
	Other	5	22.7%	7	18.9%	8	17.8%	9	14.5%
	Unknown	404	10.5%	392	8.9%	448	9.6%	466	9.7%
	White	4,503	15.3%	4,352	14.9%	4,486	15.5%	4,651	16.2%

Note: Current MMIS does not support federal regulations concerning race and ethnic identification. Previous Hispanic identifications are now included in the unknown category.

¹ Unique Served: All duplicate records are removed.

² Percentage Formula: n=Unique Served/d=Unique Enrolled.

Data Source: DSSURS - Data Pulled: 10/16/08

0407-0308 Qtr Report.doc

TABLE 6: UNIQUE¹ SERVED BY MHO/ETHNICITY AND PERCENTAGE² OF ENROLLEES SERVED (*continued*)

MHO	Race Description	2007						2008	
		2 nd Qtr	Rate	3 rd Qtr	Rate	4 th Qtr	Rate	1 st Qtr	Rate
MVBCN	Am. Indian/Alaskan Ntv	153	15.7%	144	15.4%	140	15.5%	153	16.5%
	Asian or Pac. Islanders	62	7.2%	64	7.4%	58	6.9%	52	5.9%
	Black	141	13.6%	129	12.8%	127	12.1%	136	13.2%
	Hispanic	18	1.4%	5	11.6%	6	17.1%	8	32.0%
	Ntv Hawaiian/Pac. Islander	7	2.8%	5	1.9%	15	6.0%	18	6.8%
	Other	21	30.9%	25	16.7%	39	25.3%	44	24.7%
	Unknown	615	3.0%	659	3.0%	691	3.0%	752	3.2%
	White	5,651	11.6%	5,377	11.0%	5,962	12.4%	6,121	12.6%
Verity	Am. Indian/Alaskan Ntv	282	25.0%	300	26.9%	282	26.1%	289	26.2%
	Asian or Pacific Islanders	714	12.8%	688	12.2%	667	11.6%	655	11.1%
	Black	1,358	11.0%	1,266	10.2%	1,254	10.1%	1,239	10.0%
	Hispanic	11	1.3%	11	40.7%	7	46.7%	6	46.2%
	Ntv Hawaiian/Pac. Islander	5	2.5%	5	2.2%	2	0.8%	4	1.6%
	Other	34	25.2%	43	25.0%	53	26.2%	52	21.7%
	Unknown	650	4.9%	646	4.5%	614	4.1%	651	4.4%
	White	5,705	14.7%	5,551	14.5%	5,309	14.0%	5,381	14.2%
Washington	Am. Indian/Alaskan Ntv	34	15.5%	42	19.8%	50	21.5%	51	23.1%
	Asian or Pacific Islanders	152	8.1%	165	8.7%	145	7.7%	153	8.4%
	Black	171	11.9%	154	10.3%	137	8.9%	154	10.0%
	Hispanic	4	0.5%	2	7.4%	1	6.7%	1	7.1%
	Ntv Hawaiian/Pac. Islander	2	1.4%	4	2.4%	2	1.2%	0	0.0%
	Other	5	12.2%	9	20.0%	5	7.9%	16	18.6%
	Unknown	331	2.8%	339	2.7%	359	2.8%	368	2.9%
	White	2,148	13.4%	2,091	12.9%	2,139	13.5%	2,281	14.3%
Total Served	Am. Indian/Alaskan Ntv	932	15.1%	909	15.3%	918	15.8%	919	15.8%
	Asian or Pacific Islanders	1,066	10.1%	1,025	9.6%	980	9.1%	975	9.0%
	Black	2,046	10.9%	1,908	10.2%	1,861	9.8%	1,874	9.9%
	Hispanic	46	0.9%	30	18.8%	27	23.1%	27	26.2%
	Ntv Hawaiian/Pac. Islander	32	3.3%	32	3.0%	36	3.3%	44	4.1%
	Other	103	25.8%	128	21.6%	153	20.7%	183	19.3%
	Unknown	3,133	4.2%	3,097	3.8%	3,296	3.9%	3,436	4.0%
	White	30,897	12.1%	29,205	11.5%	30,118	12.0%	30,758	12.2%

Note: Current MMIS does not support federal regulations concerning race and ethnic identification.
Previous Hispanic identifications are now included in the unknown category.

¹ Unique Served: All duplicate records are removed.

² Percentage Rate Formula: n=Unique Served/d=Unique Enrolled.

FIGURE 4: UNIQUE ENCOUNTERS BY DIAGNOSTIC GROUPS: TOTAL ALL QUARTERS

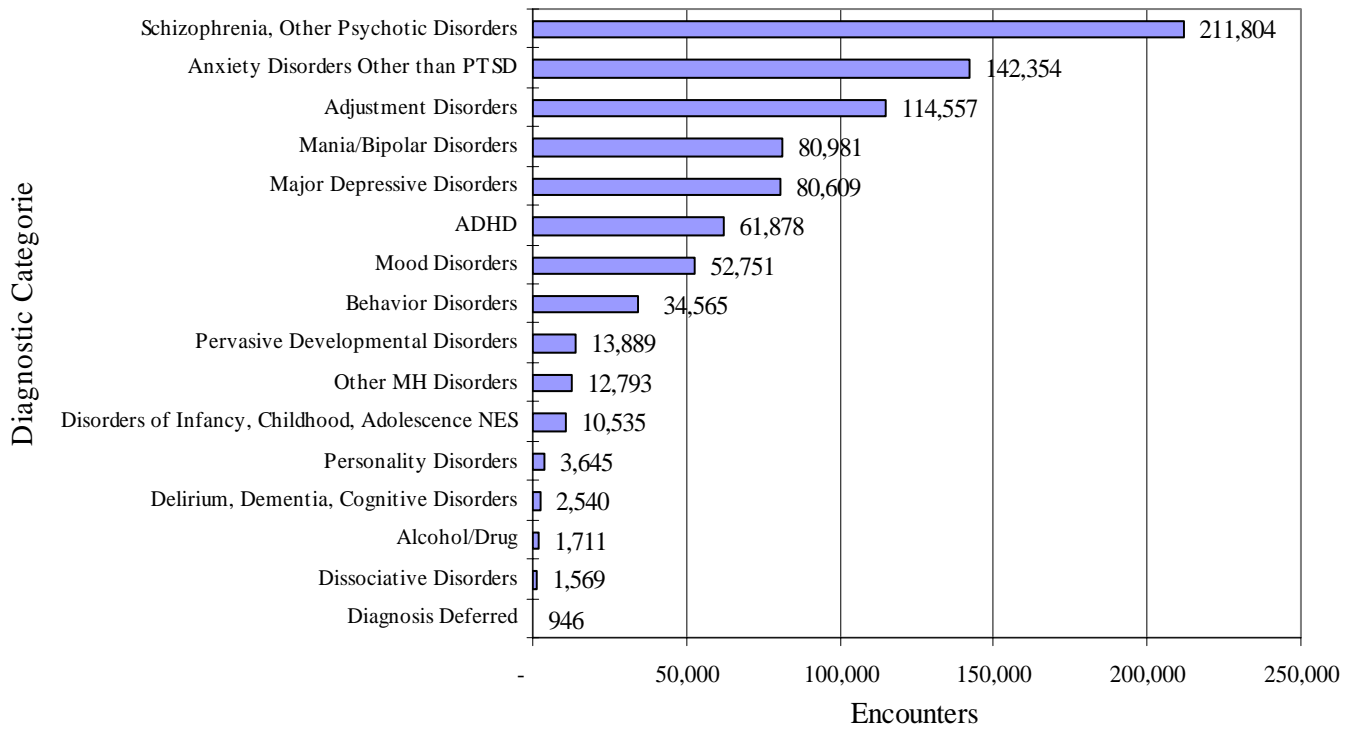


TABLE 7: UNIQUE¹ SERVED ENCOUNTERS² BY MHO/DIAGNOSTIC GROUPS IN DESCENDING ORDER BASED ON THE 1ST QUARTER 2008

MHO Contractors	Diagnostic Group	2007			2008
		2 nd Qtr	3 rd Qtr	4 th Qtr	1 st Qtr
Total Encounters	Anxiety Disorders Other than PTSD	176,501	116,593	113,768	108,041
	Disorders of Infancy, Childhood, Adolescence NES	180,235	60,390	63,961	65,896
	Delirium, Dementia, Cognitive Disorders	136,909	48,207	51,234	53,507
	Pervasive Developmental Disorders	42,723	37,337	36,998	38,253
	Personality Disorders	41,464	36,054	35,513	37,406
	Behavior Disorders	91,015	24,333	27,155	28,764
	Schizophrenia, Other Psychotic Disorders	34,673	21,516	23,029	25,453
	Dissociative Disorders	158,273	14,035	16,172	16,838
	Alcohol/Drug	40,949	5,892	7,053	7,229
	ADHD	18,994	6,050	6,386	6,223
	Mood Disorders	5,996	4,406	5,045	4,881
	Adjustment Disorders	15,818	1,591	1,622	1,447
	Major Depressive Disorders	212,787	1,122	991	1,097
	Other MH Disorders	2,279	695	823	740
	Mania/Bipolar Disorders	1,342	704	676	608
	Diagnosis Deferred	81,782	598	718	605

¹ Unique Served: All duplicate records are removed.

² Encounters: A contact or admission for covered services to OHP Member – can be 1 or more per member.

TABLE 8: UNIQUE MEMBERS SERVED PER MONTH

MHO Contractors	Apr-07	May-07	Jun-07	Jul-07	Aug-07	Sep-07	Oct-07	Nov-07	Dec-07	Jan-08	Feb-08	Mar-08
ABHA	1,284	1,370	1,281	1,173	1,211	1,236	1,342	1,282	1,230	1,324	1,282	1,270
Clackamas	1,425	1,426	1,385	1,248	1,345	1,315	1,356	1,277	1,194	1,335	1,286	1,284
FamilyCare	360	401	373	386	378	348	353	243	232	281	258	395
GOBHI	1,547	1,670	1,563	1,501	1,530	1,439	1,647	1,540	1,436	1,588	1,612	1,545
JBH	3,481	3,480	3,303	2,937	3,098	2,913	3,433	3,256	3,156	3,219	3,121	3,221
LaneCare	3,014	3,201	3,100	2,915	3,020	2,897	3,100	3,059	2,920	3,204	3,195	3,221
MVBCN	3,397	3,754	3,602	3,522	3,607	3,294	3,939	3,584	3,588	3,984	3,981	3,924
Verity	5,193	5,255	4,983	4,786	4,925	4,718	4,986	4,728	4,742	4,844	4,788	5,012
Washington	1,565	1,633	1,545	1,554	1,574	1,513	1,652	1,612	1,539	1,693	1,673	1,757
Total	21,266	22,190	21,135	20,022	20,688	19,673	21,808	20,581	20,037	21,472	21,196	21,629
FFS	421	401	389	455	429	466	484	477	468	638	625	721

HOSPITAL DATA



TABLE 9: UNIQUE¹ HOSPITAL ADMISSIONS PER 1,000 MEMBERS² ENROLLED

MHO Contractors	2007			2008
	2 nd Qtr	3 rd Qtr	4 th Qtr	1 st Qtr
ABHA	1.11	1.25	1.21	1.33
Clackamas	1.89	2.03	1.47	1.26
FamilyCare	1.67	1.38	0.28	0.09
GOBHI	0.45	0.46	0.46	0.19
JBH	1.46	1.77	1.16	1.15
LaneCare	2.57	1.91	1.95	1.63
MVBCN	0.78	0.78	0.63	0.69
Verity	2.85	2.59	2.22	2.33
Washington	1.42	1.53	1.44	1.07
Totals	1.62	1.59	1.30	1.24

(n=Total Admissions/d=Unique Enrolled per 1,000 members)

TABLE 10: UNIQUE HOSPITAL ADMISSIONS: AGE GROUPS PER 1,000 MEMBERS ENROLLED

MHO Contractors	Age Group	2007			2008
		2 nd Qtr	3 rd Qtr	4 th Qtr	1 st Qtr
ABHA	0-17	0.1	0.1	0.3	0.2
	18-64	3.1	3.4	3.0	3.5
	65+	0.0	0.0	0.6	0.6
Clackamas	0-17	0.7	0.6	0.3	0.3
	18-64	4.4	5.2	4.1	3.3
	65+	0.4	0.4	0.0	0.5
FamilyCare	0-17	0.3	0.2	0.0	0.0
	18-64	3.9	3.5	0.8	0.3
	65+	0.0	0.0	0.0	0.0
GOBHI	0-17	0.2	0.2	0.1	0.1
	18-64	1.1	1.0	1.2	0.5
	65+	0.0	0.0	0.0	0.0
JBH	0-17	0.9	0.4	0.0	0.4
	18-64	2.5	3.9	2.9	2.5
	65+	0.2	0.6	0.6	0.2

(n=Total Admissions/d=Unique Enrolled per 1,000 members)

¹ Unique: All duplicate records are removed.² Per 1,000 members is the unique number enrolled divided by 1,000

TABLE 10: UNIQUE¹ HOSPITAL ADMISSIONS BY AGE GROUPS PER 1,000 MEMBERS² ENROLLED (*continued*)

MHO Contractors	Age Group	2007			2008
		2 nd Qtr	3 rd Qtr	4 th Qtr	1 st Qtr
LaneCare	0-17	0.3	0.1	0.1	0.1
	18-64	5.5	4.6	4.4	3.9
	65+	2.7	0.5	2.3	1.4
MVBCN	0-17	0.2	0.3	0.2	0.2
	18-64	2.0	1.9	1.4	1.9
	65+	0.4	0.2	0.8	0.2
Verity	0-17	1.0	0.7	0.7	0.7
	18-64	6.0	5.9	5.0	5.4
	65+	1.2	0.7	0.6	0.3
Washington	0-17	0.4	0.5	0.5	0.7
	18-64	4.2	4.5	4.3	2.4
	65+	0.7	0.7	0.7	0.4
Total	0-17	0.5	0.4	0.3	0.3
	18-64	3.7	3.9	3.2	3.0
	65+	0.7	0.5	0.7	0.4

(n=Total Admissions/d=Unique Enrolled per 1,000 members)

TABLE 11: AVERAGE HOSPITAL DAYS OF SERVICE

MHO Contractors	2007			2008
	2 nd Qtr	3 rd Qtr	4 th Qtr	1 st Qtr
ABHA	6.3	6.2	8.0	10.0
Clackamas	9.4	13.7	12.8	7.8
FamilyCare	6.3	5.2	16.6	0.0
GOBHI	6.5	6.0	8.1	15.5
JBH	5.5	5.0	5.8	5.9
LaneCare	10.1	11.6	14.3	14.2
MVBCN	7.6	10.5	13.5	9.6
Verity	8.8	8.5	9.2	8.5
Washington	10.4	14.9	9.9	8.7
Total	8.3	9.1	10.1	9.1

n=Sum Days of Service/d=Total Discharges

¹ Unique: All duplicated records are removed² Per 1,000 members is the unique number enrolled divided by 1,000

TABLE 12: AVERAGE HOSPITAL DAYS BY MHO/AGE GROUP

MHO Contractors	Age Groups	2007			2008
		2 nd Qtr	3 rd Qtr	4 th Qtr	1 st Qtr
ABHA	0-17	6.00	6.50	1.75	6.00
	18-64	6.31	6.19	6.66	8.79
	65+	0.00	0.00	71.00	57.00
Clackamas	0-17	8.20	9.33	5.17	6.00
	18-64	9.66	14.69	13.95	7.96
	65+	15.00	14.00	0.00	9.00
FamilyCare	0-17	5.50	8.00	0.00	0.00
	18-64	6.33	4.92	16.60	4.00
	65+	0.00	0.00	0.00	0.00
GOBHI	0-17	7.67	6.00	11.00	25.00
	18-64	4.45	6.00	7.33	13.60
	65+	25.00	0.00	0.00	0.00
JBH	0-17	6.44	6.83	7.00	8.15
	18-64	5.03	4.42	5.67	5.02
	65+	6.00	11.33	9.33	26.00
LaneCare	0-17	6.67	11.50	7.00	0.00
	18-64	10.06	11.11	13.85	13.26
	65+	18.00	24.00	24.75	26.50
MVBCN	0-17	7.14	9.21	8.63	9.80
	18-64	7.72	10.83	14.00	8.46
	65+	6.00	12.00	25.00	24.00
Verity	0-17	7.50	8.00	7.93	7.31
	18-64	8.93	8.35	9.38	8.44
	65+	14.86	16.50	14.25	18.00
Washington	0-17	9.75	6.90	8.36	7.33
	18-64	10.25	16.98	9.60	9.78
	65+	14.00	14.50	23.50	9.00
Totals	0-17	7.34	7.94	7.55	7.96
	18-64	8.24	9.14	10.07	8.76
	65+	14.33	16.21	22.00	23.40

n=Sum Days of Service/d=Total Discharges

n/a=no discharges within that quarter/age group

TABLE 13: PERCENT OF HOSPITAL RE-ADMISSION WITHIN 30 DAYS

MHO Contractors	2007			2008
	2nd Qtr	3rd Qtr	4th Qtr	1st Qtr
ABHA	5.4%	10.7%	8.8%	3.0%
Clackamas	4.7%	14.3%	11.1%	12.9%
FamilyCare	5.0%	0.0%	0.0%	0.0%
GOBHI	0.0%	7.1%	0.0%	0.0%
JBH	13.2%	12.0%	10.8%	4.4%
LaneCare	6.7%	12.0%	7.4%	8.8%
MVBCN	5.5%	10.5%	7.0%	5.8%
Verity	10.4%	13.6%	12.7%	8.5%
Washington	9.3%	11.5%	11.3%	8.8%
Total	8.6%	12.1%	10.2%	7.4%

n=Unique readmissions within 30 days/d=unique discharges

TABLE 14: TOTAL HOSPITAL RE-ADMISSION WITHIN 180 DAYS

MHO Contractors	2007			2008
	2nd Qtr	3rd Qtr	4th Qtr	1st Qtr
ABHA	10.8%	21.4%	11.8%	3.0%
Clackamas	7.0%	28.6%	28.9%	29.0%
FamilyCare	10.0%	30.8%	0.0%	0.0%
GOBHI	6.7%	7.1%	6.7%	0.0%
JBH	17.6%	18.8%	28.4%	10.3%
LaneCare	6.7%	18.7%	11.8%	21.1%
MVBCN	7.3%	15.8%	27.9%	17.3%
Verity	13.7%	25.5%	25.5%	25.0%
Washington	9.3%	28.8%	26.4%	17.6%
Total	11.4%	22.4%	22.9%	19.1%

n=Unique readmissions within 180 days/d=unique discharges

FIGURE 5: TOTAL SEEN BY OUTPATIENT WITHIN 7 DAYS OF HOSPITAL DISCHARGE
 (All re-admissions are included in the hospital discharge numbers. All Mental Health Diagnoses are included in the outpatient numbers.)
 (n=number seen within 7 days/d= hospital discharges.)

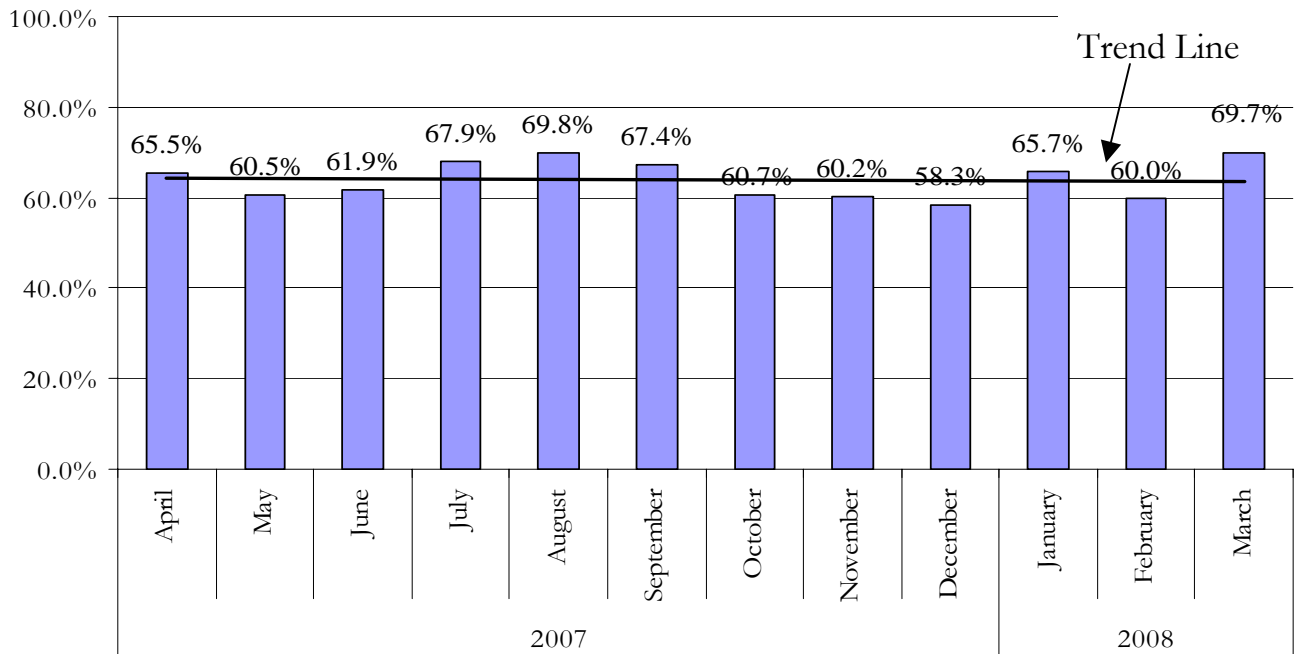


TABLE 15: SEEN BY OUTPATIENT WITHIN 7 DAYS OF HOSPITAL DISCHARGE
 (All re-admissions are included in the hospital discharge numbers. All mental health diagnoses are included in the outpatient numbers).

MHO Contractors	2007			2008
	2 nd Qtr	3 rd Qtr	4 th Qtr	1 st Qtr
ABHA	56.8%	75.0%	55.9%	57.6%
Clackamas	74.4%	83.7%	60.0%	80.6%
FamilyCare	10.0%	30.8%	0.0%	0.0%
GOBHI	46.7%	64.3%	66.7%	66.7%
JBH	54.9%	63.2%	60.8%	60.3%
LaneCare	60.0%	69.3%	44.1%	59.6%
MVBCN	63.6%	63.2%	62.8%	59.6%
Verity	60.2%	65.2%	58.8%	51.8%
Washington	74.4%	63.5%	67.9%	70.6%
Total	59.5%	66.2%	58.0%	59.0%

(n=Seen Within 7 days/d=Hospital Discharges)

GLOSSARIES



MHO UTILIZATION REPORT GLOSSARY

ADDICTIONS AND MENTAL HEALTH DIVISION (AMH):

The division office of the Department of Human Services (DHS) responsible for the administration of mental health services for the State of Oregon.

DIAGNOSIS CATEGORY:

Diagnosis categories are defined by the grouping of diagnoses in the most recent version of the American Psychiatric Association's Diagnostic and Statistical Manual (DSM).

ELIGIBLE:

An individual eligible for services under the OHP, but may not be enrolled into an MHO. Includes enrolled and fee-for-service.

ENCOUNTER:

An outpatient contact(s) or Acute Inpatient Hospital Psychiatric Care admission(s) for Covered Services provided to an OHP Member.

ENROLLED (ENROLLEE):

Eligible for the Oregon Health Plan (OHP) and enrolled in an MHO. The enrollment numbers refer to the number enrolled at any point within the quarter.

FEE-FOR-SERVICE (FFS):

Individuals who are eligible for the OHP, but are not enrolled with an MHO. This is also known as an "open card".

MENTAL HEALTH ORGANIZATION (MHO):

A Prepaid Health Plan under contract with DHS to provide Covered Services under the OHP Medicaid Demonstration Project and State Children's Health Insurance Program (SCHIP). MHOs can be FCHPs, CMHPs, or private MHOs or combinations thereof.

OREGON HEALTH PLAN (OHP):

Oregon's health care reform effort consisting of a Medicaid Demonstration Project, State Children's Health Insurance Program, an individual insurance program for persons excluded from health insurance coverage due to pre-existing health conditions, and a group insurance program for small businesses. One objective of this reform effort includes universal coverage for Oregonians. In the context of this report, OHP refers to all individuals on FFS MHO Utilization Report Glossary

MHO UTILIZATION REPORT GLOSSARY *(Continued)*

PERCENT ENROLLEES SERVED:

This is a general measure of access, but more related to utilization of services. It is a percentage calculated by summing the unique enrollees seen during a given time period and dividing that number by the total enrollees for that time period. For example, if there is 10,000 enrollees statewide in a given month and during that same month 500 of those enrollees receive services, the percent of enrollees served is 5%.

PERCENTAGE RATE:

A percent of the total enrollees that received services within a given time period.

SERVICE CATEGORY:

Service category is a descriptive grouping of service codes (BA, ECC, and CPT) that are similar procedurally.

UNIQUE SERVED:

Unduplicated number of individuals receiving mental health services.

UNIQUE ENCOUNTERS:

Unduplicated services received by an individual(s) within a specific time period. One individual may have had several services provided – each service would be part of the calculations.

DIAGNOSTIC CATEGORIES GLOSSARY WITH SPECIFIC DSMIV CODES

The following codes include, but are not limited to procedure codes used by service providers within the reporting period for this report.

ADHD:

314; 314.0; 314.00; 314.01; 314.1; 314.9; 314.90

ADJUSTMENT DISORDERS:

309.00; 309.1; 309.2; 309.21; 309.22; 309.23; 309.24; 309.28; 309.29; 309.3; 309.4;
309.40; 309.80; 309.82; 309.83; 309.89; 309.9

ALCOHOL/DRUG:

291.3; 291.4; 291.5; 291.81; 291.89; 291.9; 292.0; 292.11; 292.12; 292.2; 292.84;
292.9; 303.00; 303.01; 303.02; 303.90; 303.91; 303.92; 303.93; 304.00; 304.01;
304.03; 304.10; 304.20; 304.23; 304.3; 304.30; 304.31; 304.33; 304.40; 304.41;
304.42; 304.43; 304.70; 304.71; 304.80; 304.81; 304.83; 304.90; 305.00; 305.01;
305.02; 305.03; 305.1; 305.20; 305.21; 305.22; 305.23; 305.30; 305.40; 305.50;
305.60; 305.61; 305.62; 305.70; 305.71; 305.72; 305.73; 305.90; 305.91

ANXIETY DISORDER OTHER THAN PTSD:

293.84; 300.0; 300.00; 300.01; 300.02; 300.09; 300.10; 300.20; 300.21; 300.22;
300.23; 300.29; 300.3; 308.3; 308.9

BEHAVIOR DISORDERS:

312.00; 312.01; 312.02; 312.30; 312.31; 312.32; 312.34; 312.39; 312.4; 312.8;
312.80; 312.81; 312.82; 312.89; 312.9; 313.69; 313.81

DELIRIUM, DEMENTIA, COGNITIVE DISORDERS:

290.0; 290.10; 290.11; 290.12; 290.13; 290.20; 290.21; 290.3; 290.40; 290.41;
290.42; 290.43; 291.0; 291.2; 292.82; 292.83; 292.89; 293.0; 293.84; 294.0; 294.1;
294.10; 294.11; 294.8; 294.9; 294.90; 310.0; 310.1; 310.10

DIAGNOSIS DEFERRED:

799.9

DIAGNOSTIC CATEGORIES GLOSSARY
WITH SPECIFIC DSM-IV CODES
(*CONTINUED*)

DISORDERS OF INFANCY, CHILDHOOD, ADOLESCENCE NES:

299.10; 307.0; 307.20; 307.22; 307.23; 307.3; 307.6; 307.7; 307.9; 313.0; 313.23;
313.82; 313.89; 313.9; 315.00; 315.31; 315.32; 315.39; 315.4; 315.9; 317.0; 318.0;
318.1; 318.2; 319.0; 787.6

DISSOCIATIVE DISORDERS:

300.12; 300.13; 300.14; 300.15; 300.6

MAJOR DEPRESSIVE DISORDERS:

296.2; 296.20; 296.21; 296.22; 296.23; 296.24; 296.25; 296.26; 296.3; 296.30;
296.31; 296.32; 296.33; 296.34; 296.35; 296.36

MANIA/BIPOLAR DISORDERS:

296; 296.0; 296.00; 296.01; 296.02; 296.03; 296.04; 296.05; 296.06; 296.09; 296.10;
296.11; 296.12; 296.13; 296.15; 296.4; 296.40; 296.41; 296.42; 296.43; 296.44;
296.45; 296.46; 296.50; 296.51; 296.52; 296.53; 296.54; 296.55; 296.56; 296.6;
296.60; 296.61; 296.62; 296.63; 296.64; 296.65; 296.66; 296.7; 296.70; 296.8;
296.80; 296.81; 296.82; 296.89

MOOD DISORDERS WITHOUT BEHAVIOR, MANIA AND BIPOLAR:

293.83; 296.9; 296.90; 296.99; 300.4; 300.40; 301.13; 311; 311.0; 311.00

OTHER MENTAL HEALTH (MH) DISORDERS:

293.89; 293.9; 296.74; 300.11; 300.16; 300.19; 300.7; 300.81; 300.82; 300.9; 302.2;
302.4; 302.70; 302.73; 302.9; 305.93; 306.3; 307.1; 307.42; 307.44; 307.45; 307.46;
307.47; 307.50; 307.51; 307.52; 307.53; 307.59; 307.80; 307.89; 307.9; 308.0;
308.1; 308.2; 309.29; 316; 780.52; 780.59; 968.9; 995.2; 995.50; 995.52; 995.53;
995.54; 995.81; V61.0; V61.10; V61.20; V61.21; V61.8; V61.9; V62.81; V62.82;
V62.89; V62.9; V65.40; V71.01; V71.02; V71.09

PERSONALITY DISORDERS:

301.0; 301.10; 301.12; 301.20; 301.22; 301.3; 301.4; 301.50; 301.6; 301.7; 301.81;
301.82; 301.84; 301.89; 301.9; 301.83

**DIAGNOSTIC CATEGORIES GLOSSARY
WITH SPECIFIC DSMIV CODES
(Continued)**

PERVASIVE DEVELOPMENTAL DISORDERS:

299.0; 299.00; 299.80

POST-TRAUMATIC STRESS DISORDER (PTSD):

309.81

SCHIZOPHRENIA, OTHER PSYCHOTIC DISORDERS:

293.81; 293.82; 295.0; 295.00; 295.02; 295.03; 295.10; 295.11; 295.12; 295.13;
295.14; 295.15; 295.20; 295.22; 295.23; 295.24; 295.3; 295.30; 295.31; 295.32;
295.33; 295.34; 295.35; 295.40; 295.42; 295.43; 295.45; 295.50; 295.60; 295.61;
295.62; 295.64; 295.65; 295.7; 295.70; 295.71; 295.73; 295.74; 295.75; 295.80;
295.82; 295.9; 294.90; 295.91; 295.92; 295.93; 295.94; 295.95; 297.1; 297.2; 297.3;
297.30; 297.9; 298.0; 298.8; 298.9; 298.90; 299.01

SERVICE CATEGORIES GLOSSARY WITH SPECIFIC PROCEDURES CODES

ALTERNATIVES TO INPATIENT HOSPITALIZATION:

H0035; H2013

ASSERTIVE COMMUNITY TREATMENT:

H0039

ASSESSMENT & EVALUATION:

90801; 90802; 96100; 99090; 99214; 99222; 99223; 99231; 99232; 99233; 99238;
99239; BA008; BA010; BA011; H0002; H0031

CASE MANAGEMENT:

99371; BA046; BA047; BA147; T1016

CHILD & FAMILY TEAM MEETINGS:

H0032

CONSULTATION:

90882; 90887; 99255; BA017

CRISIS INTERVENTION:

S9484

FAMILY THERAPY:

90846; 90849; BA013; BA016

GROUP THERAPY:

90853; 90857; BA015; BA115

INDIVIDUAL THERAPY:

90804; 90805; 90806; 90807; 90808; 90809; 90810; 90811; 90812; 90813; 90814;
90815; BA011; BA111; H0004

INTERPRETIVE SERVICES:

T1013

ISA - AE:

H0018

SERVICE CATEGORIES GLOSSARY WITH SPECIFIC PROCEDURES CODES

(Continued)

ISA - DAY TREATMENT:

ECC13; H0037; H2012

ISA - MST:

H2033

ISA - RESIDENTIAL:

ECC11; H0019

LEVEL OF NEED DETERMINATION:

T1023

MEDICATION MANAGEMENT:

90862; BA019; BA026; BA126; H0033; H0034; H2010

OUTPATIENT THERAPY:

90847; 90849; 90899; ECC50; H0045; H2011; H2023; S9484; T1005

RESPIRE CARE:

ECC20; H0045; S5151; S9125

SKILLS TRAINING:

G0176; G0177; H2014; H2027; H2032

SUB-ACUTE CARE:

H2013; H2023

SUPPORTIVE DAY PROGRAM:

H0036

TREATMENT FOSTER CARE:

S5145; S5146

WRAPAROUND SERVICES:

H0038; H2021; H2022; H2027