

*Department of Human Services
Addictions and Mental Health Division*

Oregon Health Plan Mental Health Utilization Contract Year End Report



*January 1, 2007
Through
December 31, 2007*

**Report Produced Quarterly by
Program Analysis and Evaluation Team
JULY 2008**



EXECUTIVE SUMMARY
REPORT ON OREGON HEALTH PLAN (OHP)
UTILIZATION AND ENROLLMENT FOR
MENTAL HEALTH SERVICES:
JANUARY 2007 THROUGH DECEMBER 2007

The Mental Health Organization (MHO) Utilization Quarterly Report for the period of January 1, 2007 through December 31, 2007, contains enrollment, unique served and hospitalization data. The data for this report were pulled July 2, 2008. All information came from the Division of Medical Assistance Programs' (DMAP) Decision Support/Surveillance and Utilization Review System (DSSURS) and is comparable to the report released in April 2008.

Population

- This report reflects only Medicaid members who were eligible, enrolled, and received mental health services during the report period.
- The acute care admission population is any enrolled Medicaid member who was admitted for inpatient psychiatric treatment.
- Those who are receiving mental health services and alcohol and drug treatment are included in this report.

Limitations

- This report does not include tests of the statistical significance of apparent differences among providers or across time periods.
- The report is a “snap-shot” in time for the specific report being created and is comparable to the report released in April 2008.
- Acute hospitalization data includes and is not limited to transfers from one facility to another and/or re-admitted within a 24-hour time frame.
- There is a 180-day lag between the times a service is delivered and the time the services is contractually required to be billed.
- The enrollment numbers refer to the number enrolled at any point within the quarter.

Formula

- The calculations for the unique enrollees and/or served is dividing the number of total enrollees by the number served within the same time period.
- The penetration rate, or percentage rate, is a general measure of access and is related to the utilization of services.

Report Schedule: This report is created on a quarterly basis.

TABLE OF CONTENTS

The format and contents are constructed as follows:

- Figures are used to illustrate trends in statewide data.
- Tables are used to summarize quarterly data at the MHO level. Some tables include FFS and All Eligibles.



Executive Summary	i
-------------------------	---

Enrollment Data:

Table 1: Unique Members Enrolled by MHO	1
Figure 1: Total Unique Members Enrolled by Age Groups	1
Table 2: Unique Members Enrolled by Age Groups/MHO	2
Table 3: Enrollment Numbers per Month.....	3

Served Data:

Table 4: Unique Members Served by MHO and Percentage Rate.....	4
Figure 2: Total Unique Members Served by Age Groups	4
Table 5: Unique Served by MHO/Age Group and Percentage Rate	5
Figure 3: Total Unique Served by Ethnicity	6
Table 6: Unique Served by MHO/Ethnicity and Percentage Rate	6
Figure 4: Total All Quarters: Unique Encounters by Diagnostic Groups	9
Table 7: Unique Served Encounters by MHO/Diagnostic Groups.....	9
Table 8: Unique Members Served per Month.....	10

Hospital Data:

Table 9: Unique Hospital Admissions per 1,000 Members Enrolled	11
Table 10: Unique Hospital Admissions: Age Groups per 1,000 Members Enrolled ...	11
Table 11: Average Hospital Days of Service.....	12
Table 12: Average Hospital Days by MHO/Age Group	13
Table 13: Percent of Hospital Re-Admission within 30 days	14
Table 14: Total Hospital Re-Admission within 180 days.....	14
Figure 5: Total Seen by Outpatient within 7 Days of Hospital Discharge.....	15
Table 15: Seen by Outpatient within 7 Days of Hospital Discharge	15

Glossaries:

MHO Utilization Report Glossary	16
Diagnostic Categories Glossary	18
Service Categories Glossary	21

ENROLLMENT DATA

- ❖ Enrolled: Eligible for OHP and enrolled in an MHO
- ❖ Eligibles: Both Enrolled and FFS
- ❖ Fee-For-Service (FFS): Eligible for OHP and NOT enrolled with an MHO (Open Card)



TABLE 1: UNIQUE MEMBERS ENROLLED BY MHO

MHO Contractors	2007							
	1 st Qtr	% Enrolled	2 nd Qtr	% Enrolled	3 rd Qtr	% Enrolled	4 th Qtr	% Enrolled
ABHA	26,025	7.1%	26,098	7.0%	25,673	6.9%	25,668	6.9%
Clackamas	25,246	6.8%	25,293	6.8%	25,500	6.9%	25,671	6.9%
FamilyCare	9,904	2.7%	10,402	2.8%	10,596	2.9%	10,627	2.9%
GOBHI	30,980	8.4%	30,883	8.3%	30,740	8.3%	30,521	8.2%
JBH	63,758	17.3%	63,818	17.2%	63,975	17.2%	64,018	17.2%
LaneCare	35,252	9.6%	35,402	9.6%	35,598	9.6%	35,484	9.5%
MVBCN	72,725	19.7%	73,459	19.8%	73,938	19.9%	74,407	20.0%
Verity	72,588	19.7%	72,717	19.6%	72,559	19.5%	72,674	19.6%
Washington	32,154	8.7%	32,400	8.7%	32,712	8.8%	32,653	8.8%
Total Enrolled	368,632	100%	370,472	100%	371,291	100%	371,723	100%

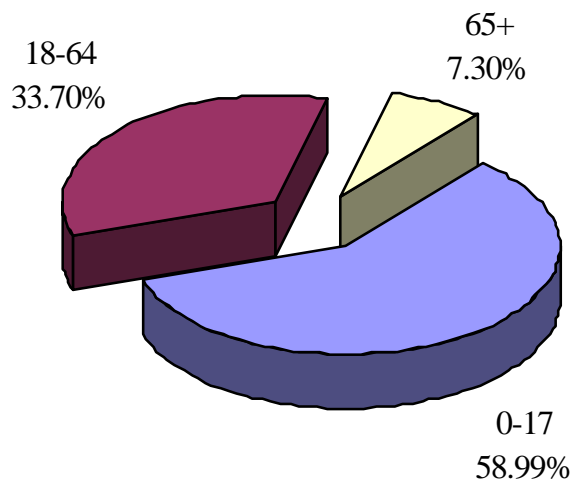
n=Unique Enrolled/d=Total Enrolled

	1 st Qtr	% All Eligibles	2 nd Qtr	% All Eligibles	3 rd Qtr	% All Eligibles	4 th Qtr	% All Eligibles
Total Enrolled	368,632	90.9%	370,472	90.9%	371,291	91.0%	371,723	90.8%
FFS ³	36,797	9.1%	37,166	9.1%	36,940	9.0%	37,623	9.2%
All Eligibles²	405,429	100%	407,638	100%	408,231	100%	409,346	100%

n=Total Enrolled/d=All Eligibles

n=FFS/d=All Eligibles

FIGURE 1: TOTAL UNIQUE MEMBERS ENROLLED BY AGE GROUPS



³ Fee-For-Service (FFS): Eligible for OHP and NOT enrolled with an MHO (Open Card)

² Eligibles: Both Enrolled and FFS

TABLE 2: UNIQUE MEMBERS Enrolled¹ by Age Groups & Percentage by MHO Total

		2007							
MHO Contractors	Age Groups	1 st Qtr	% by MHO Qtr Total ²	2 nd Qtr	% by MHO Qtr Total	3 rd Qtr	% by MHO Qtr Total	4 th Qtr	% by MHO Qtr Total
ABHA	0-17	15,369	59.1%	15,623	59.9%	15,472	60.3%	15,449	60.2%
	18-64	8,966	34.5%	8,787	33.7%	8,482	33.0%	8,502	33.1%
	65 +	1,690	6.5%	1,688	6.5%	1,719	6.7%	1,717	6.7%
Clackamas	0-17	15,071	59.7%	15,299	60.5%	15,485	60.7%	15,543	60.5%
	18-64	7,972	31.6%	7,822	30.9%	7,846	30.8%	7,927	30.9%
	65 +	2,203	8.7%	2,172	8.6%	2,169	8.5%	2,201	8.6%
FamilyCare	0-17	5,716	57.7%	6,083	58.5%	6,302	59.5%	6,353	59.8%
	18-64	3,750	37.9%	3,872	37.2%	3,841	36.2%	3,817	35.9%
	65 +	438	4.4%	447	4.3%	453	4.3%	457	4.3%
GOBHI	0-17	18,539	59.8%	18,605	60.2%	18,611	60.5%	18,502	60.6%
	18-64	10,194	32.9%	10,013	32.4%	9,868	32.1%	9,697	31.8%
	65 +	2,247	7.3%	2,265	7.3%	2,261	7.4%	2,322	7.6%
JBH	0-17	34,936	54.8%	35,317	55.3%	35,608	55.7%	35,508	55.5%
	18-64	24,327	38.2%	23,976	37.6%	23,836	37.3%	23,931	37.4%
	65 +	4,495	7.1%	4,525	7.1%	4,531	7.1%	4,579	7.2%
LaneCare	0-17	19,045	54.0%	19,371	54.7%	19,564	55.0%	19,450	54.8%
	18-64	14,150	40.1%	13,920	39.3%	13,921	39.1%	13,888	39.1%
	65 +	2,057	5.8%	2,111	6.0%	2,113	5.9%	2,146	6.0%
MVBCN	0-17	45,411	62.4%	46,294	63.0%	46,846	63.4%	47,120	63.3%
	18-64	22,800	31.4%	22,581	30.7%	22,505	30.4%	22,605	30.4%
	65 +	4,514	6.2%	4,584	6.2%	4,587	6.2%	4,682	6.3%
Verity	0-17	40,002	55.1%	40,448	55.6%	40,401	55.7%	40,574	55.8%
	18-64	26,210	36.1%	25,786	35.5%	25,591	35.3%	25,484	35.1%
	65 +	6,376	8.8%	6,483	8.9%	6,567	9.1%	6,616	9.1%
Washington	0-17	21,127	65.7%	21,554	66.5%	21,874	66.9%	21,863	67.0%
	18-64	8,370	26.0%	8,156	25.2%	8,122	24.8%	8,030	24.6%
	65 +	2,657	8.3%	2,690	8.3%	2,716	8.3%	2,760	8.5%
Total by Quarter	0-17	215,216	58.4%	218,594	59.0%	220,163	59.3%	220,362	59.3%
	18-64	126,739	34.4%	124,913	33.7%	124,012	33.4%	123,881	33.3%
	65 +	26,677	7.2%	26,965	7.3%	27,116	7.3%	27,480	7.4%

¹ Enrolled: Eligible for OHP and enrolled in an MHO

² Percentage formula: n=unique enrolled by age group/d=MHO total enrolled

TABLE 3: ENROLLMENT NUMBERS PER MONTH

MHO Contractor	Jan-07	Feb-07	Mar-07	Apr-07	May-07	Jun-07	Jul-07	Aug-07	Sep-07	Oct-06	Nov-06	Dec-06
ABHA	23,993	23,853	23,931	23,931	24,267	24,111	23,758	23,779	23,667	23,891	23,741	23,673
Clackamas	23,494	23,544	23,581	23,598	23,941	24,001	23,846	23,981	24,046	24,166	24,068	23,996
FamilyCare	9,728	9,773	9,484	9,650	10,157	10,219	9,947	9,649	10,137	10,164	10,159	10,035
GOBHI	28,574	28,614	28,546	28,465	28,880	28,717	28,550	28,443	28,191	28,503	28,123	28,120
JBH	59,348	59,119	59,023	59,086	59,979	59,813	59,356	59,553	59,154	59,837	59,591	59,475
LaneCare	33,161	32,899	32,778	32,801	33,268	33,110	32,940	33,173	33,176	33,491	33,220	33,021
MVBCN	67,509	67,430	67,911	67,964	69,102	69,107	68,470	68,891	68,606	69,480	69,059	69,155
Verity	68,054	67,728	67,962	67,996	68,887	68,785	68,072	68,504	68,918	69,080	68,596	68,114
Washington	29,518	29,548	29,648	29,712	30,322	30,348	30,158	30,435	30,370	30,601	30,250	30,072
Monthly Totals	343,379	342,508	342,864	343,203	348,803	348,211	345,097	346,408	346,265	349,213	346,807	345,661
% Monthly Increase/Decrease	-0.25%	0.10%	0.10%	1.61%	-0.17%	-0.90%	0.38%	-0.04%	0.84%	-0.69%	-0.33%	
Eligibles	411,171	408,863	404,619	404,848	404,360	405,583	407,004	408,013	407,605	407,591	408,422	408,122
FFS	67,792	66,355	61,755	61,645	55,557	57,372	61,907	61,605	61,340	58,378	61,615	62,461

SERVICE DATA

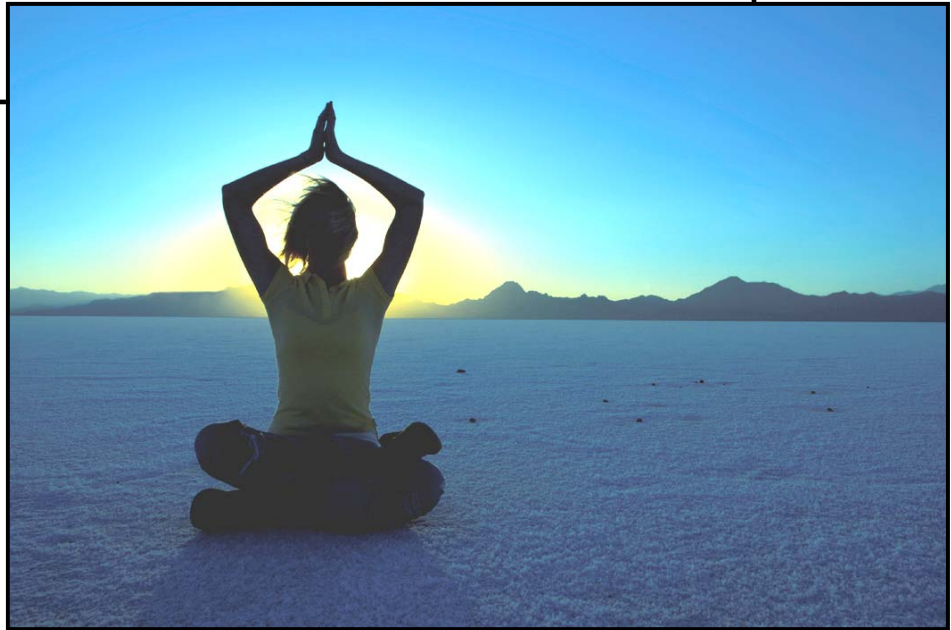
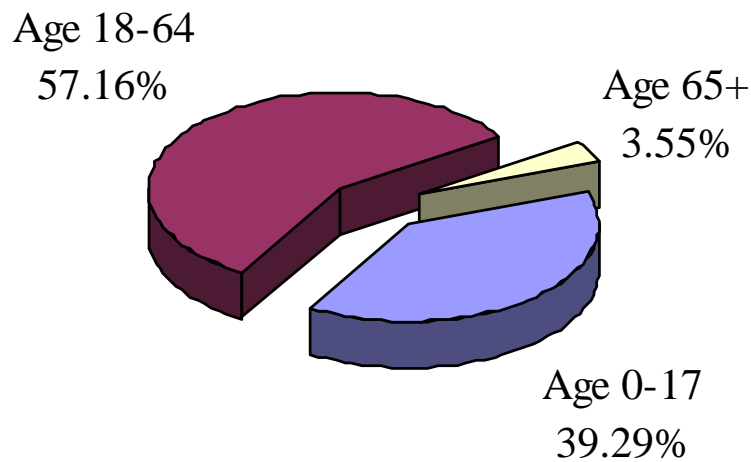


TABLE 4: UNIQUE MEMBERS SERVED BY MHO AND PERCENTAGE² OF ENROLLEES SERVED

MHO Contractors	2007							
	1 st Qtr	% Rate	2 nd Qtr	% Rate	3 rd Qtr	% Rate	4 th Qtr	% Rate
ABHA	1,813	7.0%	1,910	7.3%	1,741	6.8%	1,826	7.1%
Clackamas	1,917	7.6%	2,017	8.0%	1,868	7.3%	1,864	7.3%
FamilyCare	541	5.5%	591	5.7%	575	5.4%	468	4.4%
GOBHI	2,326	7.5%	2,352	7.6%	2,206	7.2%	2,254	7.4%
JBH	4,808	7.5%	4,989	7.8%	4,470	7.0%	4,723	7.4%
LaneCare	3,941	11.2%	4,068	11.5%	3,906	11.0%	3,997	11.3%
MVBCN	5,046	6.9%	5,267	7.2%	5,042	6.8%	5,456	7.3%
Verity	6,891	9.5%	6,989	9.6%	6,676	9.2%	6,478	8.9%
Washington	2,258	7.0%	2,283	7.0%	2,244	6.9%	2,253	6.9%
Total Served	29,541	8.0%	30,466	8.2%	28,728	7.7%	29,319	7.9%
FFS	496	1.3%	476	1.3%	523	1.4%	536	1.4%

FIGURE 2: TOTAL UNIQUE MEMBERS SERVED BY AGE GROUPS



² Percentage Formula: n=Unique Served/d=Unique Enrolled.

TABLE 5: UNIQUE¹ SERVED BY MHO/AGE GROUP AND PERCENTAGE² OF ENROLLEES SERVED

MHO Contractors	Age Groups	2007							
		1 st Qtr	Rate	2 nd Qtr	Rate	3 rd Qtr	Rate	4 th Qtr	Rate
ABHA	0-17	758	4.9%	806	5.2%	682	4.4%	726	4.7%
	18-64	1,013	11.3%	1,051	12.0%	1,008	11.9%	1,054	12.4%
	65+	42	2.5%	53	3.1%	51	3.0%	46	2.7%
Clackamas	0-17	740	4.9%	794	5.2%	756	4.9%	753	4.8%
	18-64	1,116	14.0%	1,155	14.8%	1,055	13.4%	1,062	13.4%
	65+	61	2.8%	68	3.1%	57	2.6%	49	2.2%
FamilyCare	0-17	259	4.5%	275	4.5%	248	3.9%	201	3.2%
	18-64	278	7.4%	311	8.0%	323	8.4%	264	6.9%
	65+	4	0.9%	5	1.1%	4	0.9%	3	0.7%
GOBHI	0-17	934	5.0%	981	5.3%	890	4.8%	946	5.1%
	18-64	1,298	12.7%	1,289	12.9%	1,240	12.6%	1,232	12.7%
	65+	94	4.2%	82	3.6%	76	3.4%	76	3.3%
JBH	0-17	1,872	5.4%	2,035	5.8%	1,716	4.8%	1,926	5.4%
	18-64	2,809	11.5%	2,821	11.8%	2,638	11.1%	2,680	11.2%
	65+	127	2.8%	133	2.9%	116	2.6%	117	2.6%
LaneCare	0-17	1,566	8.2%	1,679	8.7%	1,527	7.8%	1,597	8.2%
	18-64	2,298	16.2%	2,306	16.6%	2,297	16.5%	2,318	16.7%
	65+	77	3.7%	83	3.9%	82	3.9%	82	3.8%
MVBCN	0-17	2,059	4.5%	2,203	4.8%	2,053	4.4%	2,218	4.7%
	18-64	2,819	12.4%	2,891	12.8%	2,811	12.5%	3,068	13.6%
	65+	168	3.7%	173	3.8%	178	3.9%	170	3.6%
Verity	0-17	2,306	5.8%	2,422	6.0%	2,310	5.7%	2,377	5.9%
	18-64	4,199	16.0%	4,165	16.2%	3,994	15.6%	3,774	14.8%
	65+	386	6.1%	402	6.2%	372	5.7%	327	4.9%
Washington	0-17	866	4.1%	884	4.1%	902	4.1%	912	4.2%
	18-64	1,267	15.1%	1,272	15.6%	1,237	15.2%	1,247	15.5%
	65+	125	4.7%	127	4.7%	105	3.9%	94	3.4%
Total Served	0-17	11,360	5.3%	12,079	5.5%	11,084	5.0%	11,656	5.3%
	18-64	17,097	13.5%	17,261	13.8%	16,603	13.4%	16,699	13.5%
	65+	1,084	4.1%	1,126	4.2%	1,041	3.8%	964	3.5%

¹ Unique Served: All duplicate records are removed.

² Percentage Formula: n=Unique Served/d=Unique Enrolled.

FIGURE 3: TOTAL UNIQUE¹ SERVED BY ETHNICITY

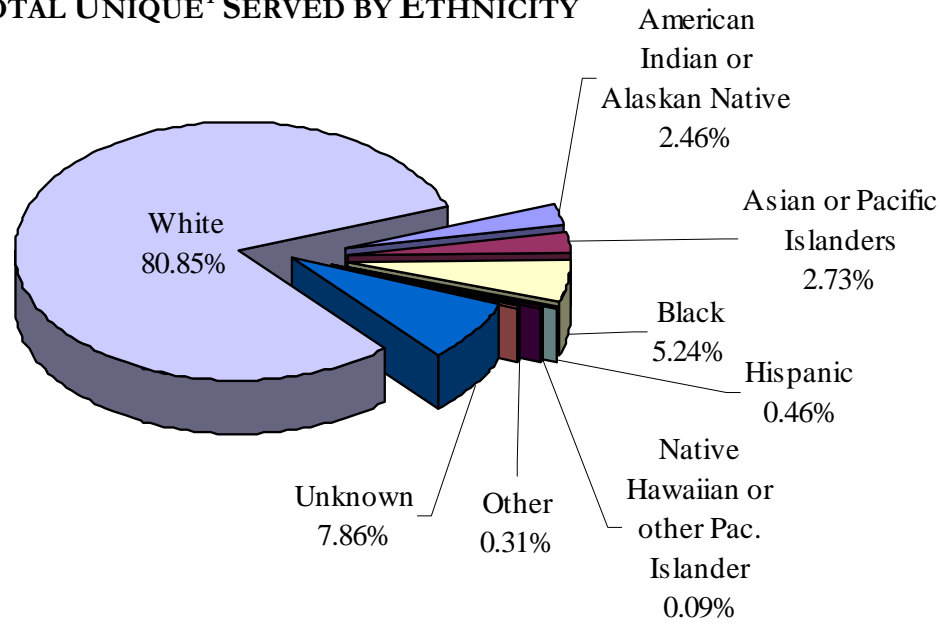


TABLE 6: UNIQUE SERVED BY MHO/ETHNICITY AND PERCENTAGE² OF ENROLLEES SERVED

MHO	Race Description	2007							
		1 st Qtr	Rate	2 nd Qtr	Rate	3 rd Qtr	Rate	4 th Qtr	Rate
ABHA	Am. Indian/Alaskan Ntv	32	4.0%	28	4.1%	30	4.9%	41	7.1%
	Asian or Pacific Islanders	8	3.5%	7	3.0%	6	2.8%	4	1.8%
	Black	22	7.7%	26	8.3%	21	7.1%	20	6.8%
	Hispanic	4	0.1%	0	0.0%	0	0.0%	0	0.0%
	Ntv Hawaiian/Pac. Islander	3	7.7%	2	4.1%	3	6.3%	4	8.3%
	Other	3	3.6%	4	5.1%	6	31.6%	7	25.9%
	Unknown	86	51.8%	107	22.4%	110	2.6%	109	2.6%
	White	1655	8.0%	1736	8.4%	1565	7.7%	1641	8.1%
Clackamas	Am. Indian/Alaskan Ntv	39	12.1%	52	17.6%	41	13.0%	35	11.4%
	Asian or Pacific Islanders	23	4.5%	32	6.5%	27	5.4%	25	5.0%
	Black	54	9.5%	51	8.8%	49	8.5%	47	8.0%
	Hispanic	35	0.7%	1	0.0%	1	5.6%	1	5.3%
	Ntv Hawaiian/Pac. Islander	3	5.3%	2	3.6%	0	0.0%	0	0.0%
	Other	6	4.5%	7	5.5%	3	20.0%	1	3.1%
	Unknown	68	28.8%	135	22.7%	138	2.5%	135	2.4%
	White	1689	9.3%	1737	9.6%	1609	8.7%	1620	8.7%

Note: Current MMIS does not support federal regulations concerning race and ethnic identification. Previous Hispanic identifications are now included in the unknown category.

¹ Unique Served: All duplicate records are removed.

² Percentage Formula: n=Unique Served/d=Unique Enrolled.

TABLE 6: UNIQUE¹ SERVED BY MHO/ETHNICITY AND PERCENTAGE² OF ENROLLEES SERVED (continued)

MHO	Race Description	2007							
		1 st Qtr	Rate	2 nd Qtr	Rate	3 rd Qtr	Rate	4 th Qtr	Rate
FamilyCare	Am. Indian/Alaskan Ntv	14	10.0%	15	11.7%	16	11.9%	14	9.9%
	Asian or Pacific Islanders	23	3.9%	21	3.6%	21	3.4%	6	1.0%
	Black	42	4.3%	48	4.6%	51	4.5%	35	3.1%
	Hispanic	2	0.2%	0	0.0%	0	0.0%	0	0.0%
	Ntv Hawaiian/Pac. Islander	2	4.1%	0	0.0%	1	1.4%	1	1.3%
	Other	4	5.2%	4	5.3%	8	44.4%	3	10.3%
	Unknown	25	32.1%	32	17.1%	28	1.7%	29	1.7%
	White	429	6.4%	471	6.7%	450	6.4%	380	5.5%
GOBHI	Am. Indian/Alaskan Ntv	56	9.1%	46	8.3%	49	9.3%	43	8.2%
	Asian or Pacific Islanders	13	7.8%	11	6.8%	7	4.4%	10	6.6%
	Black	19	6.1%	21	6.6%	34	11.8%	26	9.0%
	Hispanic	81	1.1%	5	0.1%	5	50.0%	3	50.0%
	Ntv Hawaiian/Pac. Islander	3	5.1%	2	3.2%	1	1.6%	1	1.8%
	Other	5	6.0%	3	3.8%	3	9.7%	1	2.9%
	Unknown	119	40.2%	234	29.1%	209	2.6%	273	3.5%
	White	2030	9.1%	2030	9.2%	1898	8.7%	1897	8.8%
JBH	Am. Indian/Alaskan Ntv	152	8.7%	155	9.5%	131	8.2%	153	9.9%
	Asian or Pacific Islanders	12	3.6%	14	4.2%	10	2.8%	13	3.8%
	Black	52	7.5%	54	7.7%	42	6.0%	53	7.7%
	Hispanic	17	0.3%	4	0.1%	4	25.0%	4	30.8%
	Ntv Hawaiian/Pac. Islander	7	7.7%	8	8.7%	6	6.3%	4	3.9%
	Other	6	3.2%	12	6.4%	14	20.3%	26	25.0%
	Unknown	356	48.4%	404	33.2%	362	4.7%	388	4.8%
	White	4206	7.8%	4338	8.0%	3901	7.3%	4082	7.7%
LaneCare	Am. Indian/Alaskan Ntv	68	12.4%	74	14.3%	65	12.7%	65	12.7%
	Asian or Pacific Islanders	20	4.4%	24	5.3%	24	5.3%	27	6.3%
	Black	104	11.0%	101	10.7%	88	9.5%	91	10.1%
	Hispanic	85	2.8%	2	0.1%	2	22.2%	2	22.2%
	Ntv Hawaiian/Pac. Islander	1	1.9%	1	1.9%	2	3.6%	3	5.7%
	Other	16	8.3%	5	2.9%	7	28.0%	6	15.8%
	Unknown	171	32.9%	319	40.4%	301	7.0%	343	7.7%
	White	3476	11.8%	3542	12.0%	3417	11.7%	3460	11.9%

Note: Current MMIS does not support federal regulations concerning race and ethnic identification. Previous Hispanic identifications are now included in the unknown category.

¹ Unique Served: All duplicate records are removed.

² Percentage Formula: n=Unique Served/d=Unique Enrolled.

TABLE 6: UNIQUE¹ SERVED BY MHO/ETHNICITY AND PERCENTAGE² OF ENROLLEES SERVED (*continued*)

MHO	Race Description	2007							
		1 st Qtr	Rate	2 nd Qtr	Rate	3 rd Qtr	Rate	4 th Qtr	Rate
MVBCN	Am. Indian/Alaskan Ntv	119	11.2%	119	12.3%	106	11.3%	109	11.8%
	Asian or Pac. Islanders	49	5.4%	53	6.1%	49	5.7%	42	4.9%
	Black	97	9.4%	108	10.3%	94	9.3%	95	9.1%
	Hispanic	121	0.6%	13	0.1%	4	10.0%	7	18.9%
	Ntv Hawaiian/Pac. Islander	3	1.3%	7	2.8%	5	1.9%	12	4.7%
	Other	7	2.9%	17	7.0%	17	16.7%	27	17.0%
	Unknown	336	61.4%	476	26.0%	527	2.4%	530	2.4%
	White	4314	8.9%	4474	9.2%	4240	8.7%	4634	9.5%
Verity	Am. Indian/Alaskan Ntv	223	18.1%	226	19.6%	233	21.1%	230	20.9%
	Asian or Pacific Islanders	543	9.8%	558	10.0%	529	9.3%	513	8.9%
	Black	1066	8.6%	1082	8.7%	1001	8.0%	991	7.9%
	Hispanic	65	0.5%	10	0.1%	8	25.0%	5	27.8%
	Ntv Hawaiian/Pac. Islander	4	2.2%	3	1.4%	4	1.8%	2	0.8%
	Other	14	2.7%	28	5.5%	31	25.6%	39	20.6%
	Unknown	397	62.2%	504	34.1%	518	3.6%	479	3.3%
	White	4579	11.6%	4578	11.7%	4352	11.3%	4219	11.0%
Washington	Am. Indian/Alaskan Ntv	27	12.3%	27	12.4%	32	15.2%	38	17.8%
	Asian or Pacific Islanders	122	6.4%	127	6.7%	127	6.7%	120	6.3%
	Black	128	8.7%	137	9.5%	118	7.9%	113	7.3%
	Hispanic	46	0.4%	3	0.0%	2	7.4%	2	11.1%
	Ntv Hawaiian/Pac. Islander	3	2.3%	1	0.7%	3	1.9%	2	1.3%
	Other	6	2.3%	4	1.6%	8	21.6%	6	13.3%
	Unknown	210	58.7%	266	22.3%	279	2.2%	278	2.2%
	White	1716	10.6%	1718	10.7%	1675	10.4%	1694	10.5%
Total Served	Am. Indian/Alaskan Ntv	730	10.9%	742	12.1%	703	11.8%	728	12.5%
	Asian or Pacific Islanders	813	7.7%	847	8.0%	800	7.5%	760	7.1%
	Black	1,584	8.5%	1,628	8.6%	1,498	7.9%	1,471	7.7%
	Hispanic	456	0.6%	38	0.1%	26	15.7%	24	18.2%
	Ntv Hawaiian/Pac. Islander	29	3.3%	26	2.7%	25	2.4%	29	2.7%
	Other	67	3.7%	84	4.9%	97	22.2%	116	17.6%
	Unknown	1,768	49.5%	2,477	28.9%	2,472	3.1%	2,564	3.1%
	White	24,094	9.4%	24,624	9.6%	23,107	9.1%	23,627	9.3%

Note: Current MMIS does not support federal regulations concerning race and ethnic identification. Previous Hispanic identifications are now included in the unknown category.

¹ Unique Served: All duplicate records are removed.

² Percentage Rate Formula: n=Unique Served/d=Unique Enrolled.

FIGURE 4: UNIQUE ENCOUNTERS BY DIAGNOSTIC GROUPS: TOTAL ALL QUARTERS

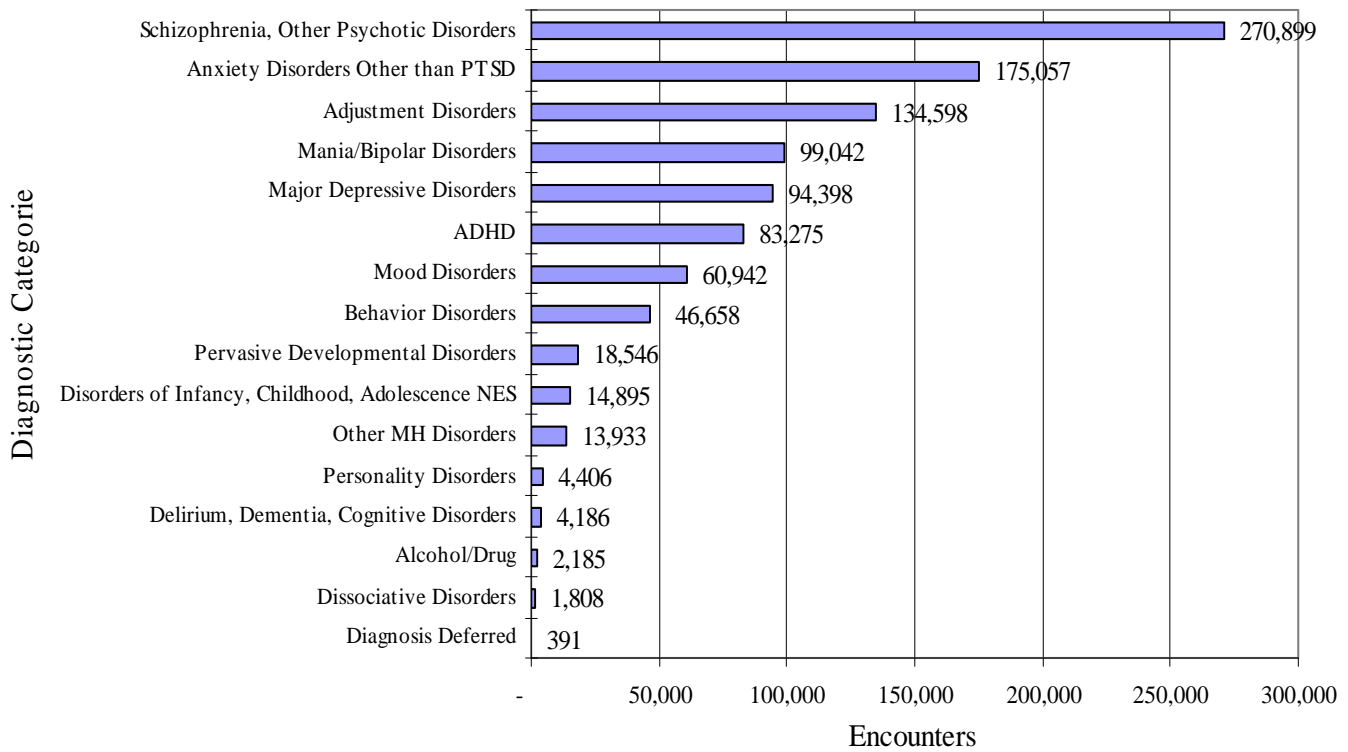


TABLE 7: UNIQUE¹ SERVED ENCOUNTERS² BY MHO/DIAGNOSTIC GROUPS IN DESCENDING ORDER BASED ON THE 4TH QUARTER 2007

MHO Contractors	Diagnostic Group	2007			
		1 st Qtr	2 nd Qtr	3 rd Qtr	4 th Qtr
Total Encounters	Schizophrenia, Other Psychotic Disorders	70,337	72,831	64,993	62,738
	Anxiety Disorders Other than PTSD	44,047	47,126	41,379	42,505
	Adjustment Disorders	33,809	37,169	31,161	32,459
	Mania/Bipolar Disorders	25,395	26,492	24,271	22,884
	Major Depressive Disorders	24,344	25,218	22,885	21,951
	ADHD	20,936	22,862	19,031	20,446
	Mood Disorders	15,350	16,355	14,244	14,993
	Behavior Disorders	11,593	12,432	10,783	11,850
	Pervasive Developmental Disorders	3,939	4,885	4,490	5,232
	Disorders of Infancy, Childhood, Adolescence NES	3,537	3,886	3,605	3,867
	Other MH Disorders	3,591	3,621	3,240	3,481
	Personality Disorders	1,193	1,204	976	1,033
	Delirium, Dementia, Cognitive Disorders	1,029	1,063	1,121	973
	Dissociative Disorders	412	396	469	531
	Alcohol/Drug	752	564	418	451
	Diagnosis Deferred	120	48	142	81

¹ Unique Served: All duplicate records are removed.

² Encounters: A contact or admission for covered services to OHP Member – can be 1 or more per member.

TABLE 8: UNIQUE MEMBERS SERVED PER MONTH

MHO Contractors	2007											
	Jan	Feb	Mar	Apr	May	Jun	Jul	Aug	Sep	Oct	Nov	Dec
ABHA	1,242	1,242	1,280	1,313	1,381	1,291	1,183	1,216	1,221	1,324	1,274	1,222
Clackamas	1,031	1,369	1,440	1,431	1,429	1,392	1,253	1,344	1,320	1,358	1,277	1,196
FamilyCare	340	375	386	398	413	378	389	379	350	349	234	211
GOBHI	1,556	1,531	1,650	1,584	1,678	1,569	1,494	1,520	1,427	1,627	1,520	1,405
JBH	3,251	3,271	3,450	3,638	3,595	3,387	3,018	3,164	2,969	3,481	3,307	3,184
LaneCare	2,955	3,063	3,142	3,136	3,240	3,135	2,934	3,028	2,911	3,071	3,040	2,905
MVBCN	3,526	3,386	3,484	3,514	3,775	3,613	3,526	3,609	3,298	3,931	3,580	3,563
Verity	4,856	4,963	5,518	5,304	5,303	5,005	4,802	4,933	4,727	4,979	4,724	4,702
Washington	1,560	1,595	1,674	1,637	1,663	1,567	1,571	1,587	1,520	1,654	1,615	1,536
Total	20,317	20,795	22,024	21,955	22,477	21,337	20,170	20,780	19,743	21,774	20,571	19,924
FFS	418	423	416	410	397	394	449	423	460	475	470	455

HOSPITAL DATA



TABLE 9: UNIQUE¹ HOSPITAL ADMISSIONS PER 1,000 MEMBERS² ENROLLED

MHO Contractors	2007			
	1 st Qtr	2 nd Qtr	3 rd Qtr	4 th Qtr
ABHA	2.42	1.11	1.29	1.21
Clackamas	1.39	1.90	1.84	1.44
FamilyCare	2.93	1.73	1.42	0.38
GOBHI	0.55	0.45	0.46	0.10
JBH	1.96	1.41	1.77	1.16
LaneCare	2.52	2.60	1.91	1.92
MVBCN	0.84	0.79	0.80	0.65
Verity	2.88	2.86	2.56	2.22
Washington	1.90	1.42	1.53	1.38
Totals	1.87	1.63	1.58	1.27

(n=Total Admissions/d=Unique Enrolled per 1,000 members)

TABLE 10: UNIQUE HOSPITAL ADMISSIONS: AGE GROUPS PER 1,000 MEMBERS ENROLLED

MHO Contractors	Age Group	2007			
		1 st Qtr	2 nd Qtr	3 rd Qtr	4 th Qtr
ABHA	0-17	0.6	0.1	0.1	0.3
	18-64	5.9	3.2	3.7	3.1
	65+	0.6	0.0	0.0	0.6
Clackamas	0-17	0.6	0.7	0.6	0.4
	18-64	3.3	4.6	4.8	3.9
	65+	0.0	0.5	0.0	0.0
FamilyCare	0-17	1.2	0.3	0.2	0.0
	18-64	5.6	4.1	3.6	1.0
	65+	2.3	0.0	0.0	0.0
GOBHI	0-17	0.1	0.2	0.2	0.0
	18-64	1.4	1.1	1.0	0.3
	65+	0.4	0.0	0.0	0.0
JBH	0-17	0.7	0.8	0.4	0.0
	18-64	4.0	2.6	4.0	2.9
	65+	0.2	0.0	0.7	0.7

(n=Total Admissions/d=Unique Enrolled per 1,000 members)

¹ Unique: All duplicate records are removed.² Per 1,000 members is the unique number enrolled divided by 1,000

TABLE 10: UNIQUE¹ HOSPITAL ADMISSIONS BY AGE GROUPS PER 1,000 MEMBERS² ENROLLED (*continued*)

MHO Contractors	Age Group	2007			
		1 st Qtr	2 nd Qtr	3 rd Qtr	4 th Qtr
LaneCare	0-17	0.3	0.3	0.1	0.1
	18-64	5.6	5.7	4.7	4.4
	65+	2.4	2.8	0.5	2.3
MVBCN	0-17	0.0	0.2	0.3	0.2
	18-64	2.5	2.2	1.9	1.5
	65+	0.4	0.4	0.2	1.1
Verity	0-17	1.0	1.0	0.7	0.7
	18-64	6.3	6.2	6.0	5.1
	65+	0.9	1.2	0.8	0.6
Washington	0-17	0.8	0.4	0.5	0.5
	18-64	4.9	4.4	4.7	4.1
	65+	1.5	0.7	0.7	0.7
Total	0-17	0.5	0.5	0.4	0.3
	18-64	4.4	3.8	3.9	3.2
	65+	0.8	0.7	0.4	0.7

(n=Total Admissions/d=Unique Enrolled per 1,000 members)

TABLE 11: AVERAGE HOSPITAL DAYS OF SERVICE

MHO Contractors	2007			
	1 st Qtr	2 nd Qtr	3 rd Qtr	4 th Qtr
ABHA	5.2	6.3	6.1	8.0
Clackamas	6.2	9.4	14.0	12.7
FamilyCare	6.1	6.3	5.2	0.0
GOBHI	5.6	6.5	5.6	9.8
JBH	4.7	5.3	4.9	5.8
LaneCare	11.4	10.1	11.7	14.3
MVBCN	10.9	8.4	10.4	13.3
Verity	9.1	8.8	8.5	9.2
Washington	8.1	10.4	14.9	9.6
Total	8.0	8.3	9.1	10.1

n=Sum Days of Service/d=Total Discharges

¹ Unique: All duplicated records are removed² Per 1,000 members is the unique number enrolled divided by 1,000

TABLE 12: AVERAGE HOSPITAL DAYS BY MHO/AGE GROUP

MHO Contractors	Age Groups	2007			
		1 st Qtr	2 nd Qtr	3 rd Qtr	4 th Qtr
ABHA	0-17	3.75	6.00	6.50	1.75
	18-64	5.38	6.31	6.11	6.66
	65+	8.00	N/A	N/A	71.00
Clackamas	0-17	5.82	8.20	9.33	5.17
	18-64	6.36	9.66	15.19	13.97
	65+	N/A	15.00	N/A	N/A
FamilyCare	0-17	5.86	5.50	8.00	N/A
	18-64	6.00	6.33	4.92	14.00
	65+	10.00	N/A	N/A	N/A
GOBHI	0-17	4.67	7.67	6.00	13.00
	18-64	5.86	4.45	5.55	8.67
	65+	N/A	25.00	N/A	N/A
JBH	0-17	6.40	6.12	6.82	7.00
	18-64	4.27	5.03	4.42	5.67
	65+	5.00	N/A	11.33	9.33
LaneCare	0-17	7.60	6.67	11.50	7.00
	18-64	11.01	10.06	11.17	13.87
	65+	21.20	18.00	24.00	24.75
MVBCN	0-17	11.00	7.14	8.73	8.63
	18-64	10.92	7.79	11.00	13.79
	65+	11.00	20.00	12.00	20.33
Verity	0-17	7.23	7.47	8.00	7.93
	18-64	9.17	8.85	8.35	9.38
	65+	17.57	14.86	16.50	14.25
Washington	0-17	8.63	9.75	6.90	8.36
	18-64	7.82	10.25	16.98	9.28
	65+	9.67	14.00	14.50	23.50
Totals	0-17	6.80	7.26	7.88	7.48
	18-64	7.95	8.22	9.15	10.06
	65+	15.15	16.67	16.38	21.35

n=Sum Days of Service/d=Total Discharges

n/a=no discharges within that quarter/age group

TABLE 13: PERCENT OF HOSPITAL RE-ADMISSION WITHIN 30 DAYS

MHO Contractors	2007			
	1st Qtr	2nd Qtr	3rd Qtr	4th Qtr
ABHA	10.2%	8.1%	10.3%	8.8%
Clackamas	19.4%	9.3%	11.1%	9.3%
FamilyCare	21.4%	10.0%	0.0%	0.0%
GOBHI	0.0%	6.7%	0.0%	0.0%
JBH	11.9%	16.9%	12.1%	9.5%
LaneCare	10.7%	6.7%	14.5%	3.0%
MVBCN	6.1%	8.8%	10.3%	4.4%
Verity	13.8%	15.4%	14.1%	12.2%
Washington	8.6%	16.3%	7.7%	11.5%
Total	11.8%	12.5%	11.8%	9.0%

n=Unique readmissions within 30 days/d=unique discharges

TABLE 14: TOTAL HOSPITAL RE-ADMISSION WITHIN 180 DAYS

MHO Contractors	2007			
	1st Qtr	2nd Qtr	3rd Qtr	4th Qtr
ABHA	11.9%	21.6%	24.1%	11.8%
Clackamas	25.0%	23.3%	26.7%	30.2%
FamilyCare	21.4%	20.0%	38.5%	0.0%
GOBHI	5.9%	13.3%	0.0%	0.0%
JBH	11.9%	31.5%	21.6%	27.0%
LaneCare	13.1%	16.7%	26.3%	9.0%
MVBCN	9.1%	22.8%	22.4%	24.4%
Verity	18.6%	29.0%	34.2%	24.4%
Washington	12.1%	27.9%	26.9%	23.1%
Total	14.8%	25.3%	27.1%	21.7%

n=Unique readmissions within 180 days/d=unique discharges

FIGURE 5: TOTAL SEEN BY OUTPATIENT WITHIN 7 DAYS OF HOSPITAL DISCHARGE
 (All re-admissions are included in the hospital discharge numbers. All Mental Health Diagnoses are included in the outpatient numbers.)
 (n=number seen within 7 days/d= hospital discharges.)

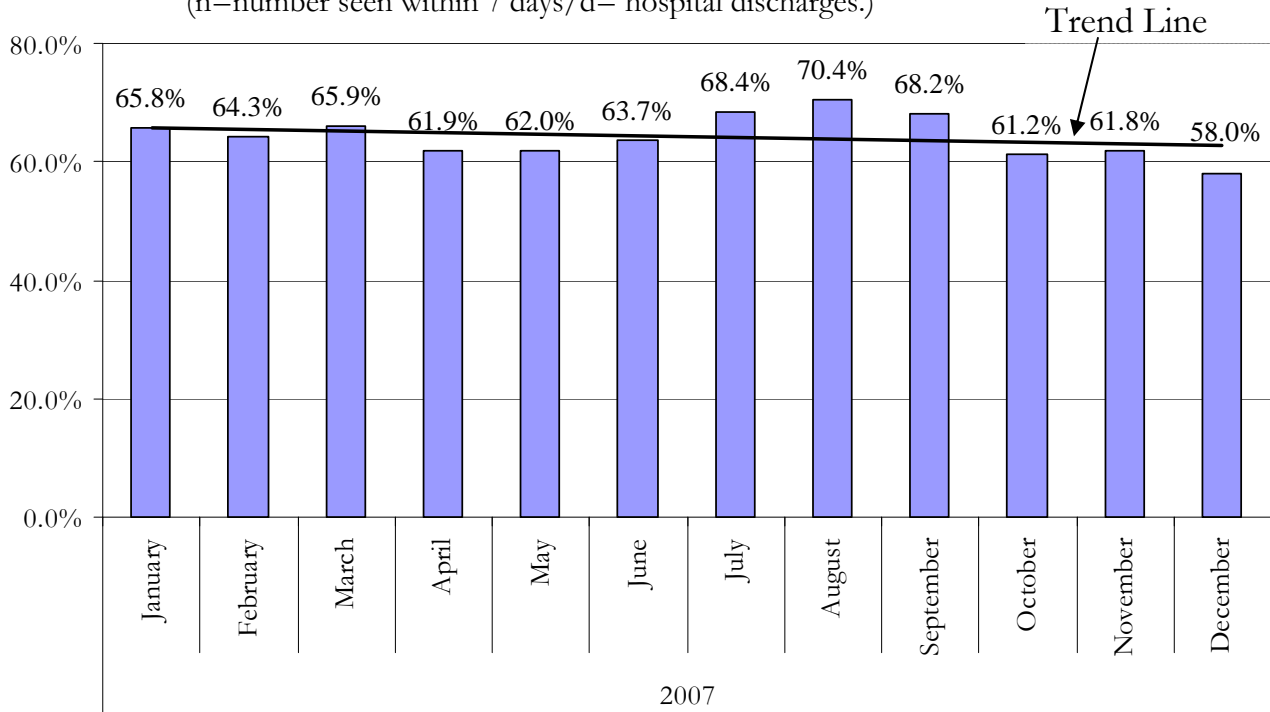
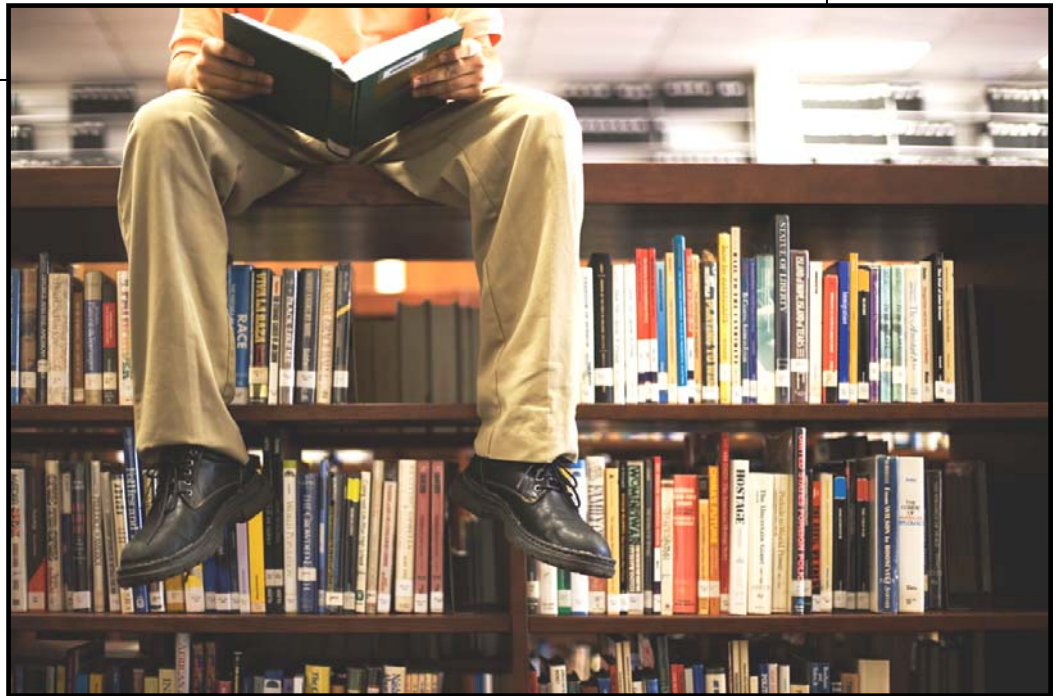


TABLE 15: SEEN BY OUTPATIENT WITHIN 7 DAYS OF HOSPITAL DISCHARGE
 (All re-admissions are included in the hospital discharge numbers. All mental health diagnoses are included in the outpatient numbers).

MHO Contractors	2007			
	1 st Qtr	2 nd Qtr	3 rd Qtr	4 th Qtr
ABHA	71.2%	54.1%	75.9%	55.9%
Clackamas	80.6%	72.1%	84.4%	62.8%
FamilyCare	28.6%	10.0%	30.8%	0.0%
GOBHI	76.5%	46.7%	57.1%	50.0%
JBH	65.9%	58.4%	64.7%	62.2%
LaneCare	60.7%	60.0%	71.1%	44.8%
MVBCN	48.5%	64.9%	65.5%	60.0%
Verity	70.0%	59.3%	66.3%	61.0%
Washington	58.6%	76.7%	63.5%	67.3%
Total	64.2%	59.7%	67.1%	58.5%

(n=Seen Within 7 days/d=Hospital Discharges)

GLOSSARIES



MHO UTILIZATION REPORT GLOSSARY

ADDICTIONS AND MENTAL HEALTH DIVISION (AMH):

The division office of the Department of Human Services (DHS) responsible for the administration of mental health services for the State of Oregon.

DIAGNOSIS CATEGORY:

Diagnosis categories are defined by the grouping of diagnoses in the most recent version of the American Psychiatric Association's Diagnostic and Statistical Manual (DSM).

ELIGIBLE:

An individual eligible for services under the OHP, but may not be enrolled into an MHO. Includes enrolled and fee-for-service.

ENCOUNTER:

An outpatient contact(s) or Acute Inpatient Hospital Psychiatric Care admission(s) for Covered Services provided to an OHP Member.

ENROLLED (ENROLLEE):

Eligible for the Oregon Health Plan (OHP) and enrolled in an MHO. The enrollment numbers refer to the number enrolled at any point within the quarter.

FEE-FOR-SERVICE (FFS):

Individuals who are eligible for the OHP, but are not enrolled with an MHO. This is also known as an "open card".

MENTAL HEALTH ORGANIZATION (MHO):

A Prepaid Health Plan under contract with DHS to provide Covered Services under the OHP Medicaid Demonstration Project and State Children's Health Insurance Program (SCHIP). MHOs can be FCHPs, CMHPs, or private MHOs or combinations thereof.

OREGON HEALTH PLAN (OHP):

Oregon's health care reform effort consisting of a Medicaid Demonstration Project, State Children's Health Insurance Program, an individual insurance program for persons excluded from health insurance coverage due to pre-existing health conditions, and a group insurance program for small businesses. One objective of this reform effort includes universal coverage for Oregonians. In the context of this report, OHP refers to all individuals on FFS MHO Utilization Report Glossary

MHO UTILIZATION REPORT GLOSSARY *(Continued)*

PERCENT ENROLLEES SERVED:

This is a general measure of access, but more related to utilization of services. It is a percentage calculated by summing the unique enrollees seen during a given time period and dividing that number by the total enrollees for that time period. For example, if there is 10,000 enrollees statewide in a given month and during that same month 500 of those enrollees receive services, the percent of enrollees served is 5%.

PERCENTAGE RATE:

A percent of the total enrollees that received services within a given time period.

SERVICE CATEGORY:

Service category is a descriptive grouping of service codes (BA, ECC, and CPT) that are similar procedurally.

UNIQUE SERVED:

Unduplicated number of individuals receiving mental health services.

UNIQUE ENCOUNTERS:

Unduplicated services received by an individual(s) within a specific time period. One individual may have had several services provided – each service would be part of the calculations.

DIAGNOSTIC CATEGORIES GLOSSARY WITH SPECIFIC DSMIV CODES

The following codes include, but are not limited to procedure codes used by service providers within the reporting period for this report.

ADHD:

314; 314.0; 314.00; 314.01; 314.1; 314.9; 314.90

ADJUSTMENT DISORDERS:

309.00; 309.1; 309.2; 309.21; 309.22; 309.23; 309.24; 309.28; 309.29; 309.3; 309.4;
309.40; 309.80; 309.82; 309.83; 309.89; 309.9

ALCOHOL/DRUG:

291.3; 291.4; 291.5; 291.81; 291.89; 291.9; 292.0; 292.11; 292.12; 292.2; 292.84;
292.9; 303.00; 303.01; 303.02; 303.90; 303.91; 303.92; 303.93; 304.00; 304.01;
304.03; 304.10; 304.20; 304.23; 304.3; 304.30; 304.31; 304.33; 304.40; 304.41;
304.42; 304.43; 304.70; 304.71; 304.80; 304.81; 304.83; 304.90; 305.00; 305.01;
305.02; 305.03; 305.1; 305.20; 305.21; 305.22; 305.23; 305.30; 305.40; 305.50;
305.60; 305.61; 305.62; 305.70; 305.71; 305.72; 305.73; 305.90; 305.91

ANXIETY DISORDER OTHER THAN PTSD:

293.84; 300.0; 300.00; 300.01; 300.02; 300.09; 300.10; 300.20; 300.21; 300.22;
300.23; 300.29; 300.3; 308.3; 308.9

BEHAVIOR DISORDERS:

312.00; 312.01; 312.02; 312.30; 312.31; 312.32; 312.34; 312.39; 312.4; 312.8;
312.80; 312.81; 312.82; 312.89; 312.9; 313.69; 313.81

DELIRIUM, DEMENTIA, COGNITIVE DISORDERS:

290.0; 290.10; 290.11; 290.12; 290.13; 290.20; 290.21; 290.3; 290.40; 290.41;
290.42; 290.43; 291.0; 291.2; 292.82; 292.83; 292.89; 293.0; 293.84; 294.0; 294.1;
294.10; 294.11; 294.8; 294.9; 294.90; 310.0; 310.1; 310.10

DIAGNOSIS DEFERRED:

799.9

DIAGNOSTIC CATEGORIES GLOSSARY
WITH SPECIFIC DSM-IV CODES
(*CONTINUED*)

DISORDERS OF INFANCY, CHILDHOOD, ADOLESCENCE NES:

299.10; 307.0; 307.20; 307.22; 307.23; 307.3; 307.6; 307.7; 307.9; 313.0; 313.23;
313.82; 313.89; 313.9; 315.00; 315.31; 315.32; 315.39; 315.4; 315.9; 317.0; 318.0;
318.1; 318.2; 319.0; 787.6

DISSOCIATIVE DISORDERS:

300.12; 300.13; 300.14; 300.15; 300.6

MAJOR DEPRESSIVE DISORDERS:

296.2; 296.20; 296.21; 296.22; 296.23; 296.24; 296.25; 296.26; 296.3; 296.30;
296.31; 296.32; 296.33; 296.34; 296.35; 296.36

MANIA/BIPOLAR DISORDERS:

296; 296.0; 296.00; 296.01; 296.02; 296.03; 296.04; 296.05; 296.06; 296.09; 296.10;
296.11; 296.12; 296.13; 296.15; 296.4; 296.40; 296.41; 296.42; 296.43; 296.44;
296.45; 296.46; 296.50; 296.51; 296.52; 296.53; 296.54; 296.55; 296.56; 296.6;
296.60; 296.61; 296.62; 296.63; 296.64; 296.65; 296.66; 296.7; 296.70; 296.8;
296.80; 296.81; 296.82; 296.89

MOOD DISORDERS WITHOUT BEHAVIOR, MANIA AND BIPOLAR:

293.83; 296.9; 296.90; 296.99; 300.4; 300.40; 301.13; 311; 311.0; 311.00

OTHER MENTAL HEALTH (MH) DISORDERS:

293.89; 293.9; 296.74; 300.11; 300.16; 300.19; 300.7; 300.81; 300.82; 300.9; 302.2;
302.4; 302.70; 302.73; 302.9; 305.93; 306.3; 307.1; 307.42; 307.44; 307.45; 307.46;
307.47; 307.50; 307.51; 307.52; 307.53; 307.59; 307.80; 307.89; 307.9; 308.0;
308.1; 308.2; 309.29; 316; 780.52; 780.59; 968.9; 995.2; 995.50; 995.52; 995.53;
995.54; 995.81; V61.0; V61.10; V61.20; V61.21; V61.8; V61.9; V62.81; V62.82;
V62.89; V62.9; V65.40; V71.01; V71.02; V71.09

PERSONALITY DISORDERS:

301.0; 301.10; 301.12; 301.20; 301.22; 301.3; 301.4; 301.50; 301.6; 301.7; 301.81;
301.82; 301.84; 301.89; 301.9; 301.83

DIAGNOSTIC CATEGORIES GLOSSARY
WITH SPECIFIC DSMIV CODES
(Continued)

PERVASIVE DEVELOPMENTAL DISORDERS:

299.0; 299.00; 299.80

POST-TRAUMATIC STRESS DISORDER (PTSD):

309.81

SCHIZOPHRENIA, OTHER PSYCHOTIC DISORDERS:

293.81; 293.82; 295.0; 295.00; 295.02; 295.03; 295.10; 295.11; 295.12; 295.13;
295.14; 295.15; 295.20; 295.22; 295.23; 295.24; 295.3; 295.30; 295.31; 295.32;
295.33; 295.34; 295.35; 295.40; 295.42; 295.43; 295.45; 295.50; 295.60; 295.61;
295.62; 295.64; 295.65; 295.7; 295.70; 295.71; 295.73; 295.74; 295.75; 295.80;
295.82; 295.9; 294.90; 295.91; 295.92; 295.93; 295.94; 295.95; 297.1; 297.2; 297.3;
297.30; 297.9; 298.0; 298.8; 298.9; 298.90; 299.01

SERVICE CATEGORIES GLOSSARY WITH SPECIFIC PROCEDURES CODES

ALTERNATIVES TO INPATIENT HOSPITALIZATION:

H0035; H2013

ASSERTIVE COMMUNITY TREATMENT:

H0039

ASSESSMENT & EVALUATION:

90801; 90802; 96100; 99090; 99214; 99222; 99223; 99231; 99232; 99233; 99238;
99239; BA008; BA010; BA011; H0002; H0031

CASE MANAGEMENT:

99371; BA046; BA047; BA147; T1016

CHILD & FAMILY TEAM MEETINGS:

H0032

CONSULTATION:

90882; 90887; 99255; BA017

CRISIS INTERVENTION:

S9484

FAMILY THERAPY:

90846; 90849; BA013; BA016

GROUP THERAPY:

90853; 90857; BA015; BA115

INDIVIDUAL THERAPY:

90804; 90805; 90806; 90807; 90808; 90809; 90810; 90811; 90812; 90813; 90814;
90815; BA011; BA111; H0004

INTERPRETIVE SERVICES:

T1013

ISA - AE:

H0018

SERVICE CATEGORIES GLOSSARY WITH SPECIFIC PROCEDURES CODES

(Continued)

ISA - DAY TREATMENT:

ECC13; H0037; H2012

ISA - MST:

H2033

ISA - RESIDENTIAL:

ECC11; H0019

LEVEL OF NEED DETERMINATION:

T1023

MEDICATION MANAGEMENT:

90862; BA019; BA026; BA126; H0033; H0034; H2010

OUTPATIENT THERAPY:

90847; 90849; 90899; ECC50; H0045; H2011; H2023; S9484; T1005

RESPIRE CARE:

ECC20; H0045; S5151; S9125

SKILLS TRAINING:

G0176; G0177; H2014; H2027; H2032

SUB-ACUTE CARE:

H2013; H2023

SUPPORTIVE DAY PROGRAM:

H0036

TREATMENT FOSTER CARE:

S5145; S5146

WRAPAROUND SERVICES:

H0038; H2021; H2022; H2027