

## Major Findings

In 2007, poverty in Jackson County remained high at 13.1 percent and the county's unemployment rate remained greater than the state and national levels at 5.7 percent. This represents a two-point reduction from the high of 7.7 percent in 2003. Significantly, poverty among single mothers dropped from 37 to 31 percent. Between 2001 and 2007, the county population grew 9.5 percent while the number of jobs grew 13.8 percent.

An increasing number of families, while not officially below the poverty level, struggled to make ends meet. One indicator is the growth in the number of students receiving free or reduced-price lunches—at 42 percent in 2007, up from 34 percent in 2000. The basic family budget for two parents and one child shows that families like this need an annual income of \$37,000—more than twice the official poverty level—to meet their needs. Among Jackson County residents, 22 percent lacked health insurance.

	Jackson County	Oregon	United States	
2007	<b>Number in Poverty</b>	<b>25,682</b>	<b>474,189</b>	<b>38,052,247</b>
	<b>Percent in Poverty</b>	13.1%	12.9%	13.0%
2000-2007	<b>Percent change in Number in Poverty</b>	15.3%	22.0%	12.2%
	<b>Percent change in Population</b>	9.9%	9.5%	7.2%
	<b>Number of additional people in Poverty</b>	<b>+ 3,413</b>	<b>+ 85,449</b>	<b>+ 4,152,435</b>
	<b>Number of additional Population</b>	<b>+ 18,026</b>	<b>+ 326,056</b>	<b>+ 20,199,253</b>

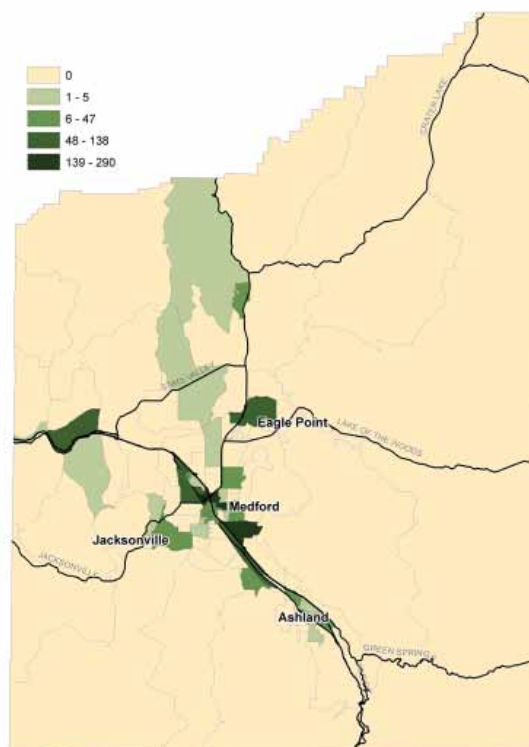
In the last five years, Jackson County has seen positive growth in both population and employment. The economic sector of Trade, Transportation, and Utilities employs the most people (19,655) at an average wage of \$30,300 per year. The lower-paid Leisure and Hospitality sector saw the largest job growth from 2006 to 2007, while Construction, with average wages of more than \$37,000 per year, lost 241 jobs.

## Community Action Agency

ACCESS, Inc  
 3630 Aviation Way  
 PO Box 4666  
 Medford, OR 97501-0188  
 (541) 779-6691  
 Fax (541) 779-8886  
[www.access-inc.org](http://www.access-inc.org)



## Affordable Housing Units by Census Block Group



# Jackson County

## Basic Family Budget, an Alternative to the Federal Poverty Threshold

2007 Jackson County's  
Basic Family Budget



Householder(s)	1 Parent	1 Parent	2 Parents	2 Parents
Children	3-5 yr old	3-5 yr old, 6-8 yr old, and 9-11 yr old	3-5 yr old	3-5 yr old, 6-8 yr old, and 9-11 yr old
Housing	\$703	\$1,023	\$703	\$1,023
Food	\$316	\$615	\$512	\$774
Child Care	\$431	\$1,064	\$431	\$1,064
Transportation	\$343	\$343	\$468	\$468
Healthcare	\$230	\$295	\$325	\$393
Other Necessities	\$316	\$508	\$377	\$557
Taxes	\$91	\$611	\$244	\$393
Monthly Total	\$2,430	\$4,459	\$3,060	\$4,672
<b>Annual Total</b>	<b>\$29,160</b>	<b>\$53,508</b>	<b>\$36,720</b>	<b>\$56,064</b>
Hourly Wage needed for Basic Family Budget	\$14.02	\$25.73	\$8.83	\$13.48
Federal Poverty Threshold (FPT)	\$14,291	\$21,100	\$16,689	\$24,744
<b>Percent of Basic Family Budget</b>	<b>49.0%</b>	<b>39.4%</b>	<b>45.4%</b>	<b>44.1%</b>

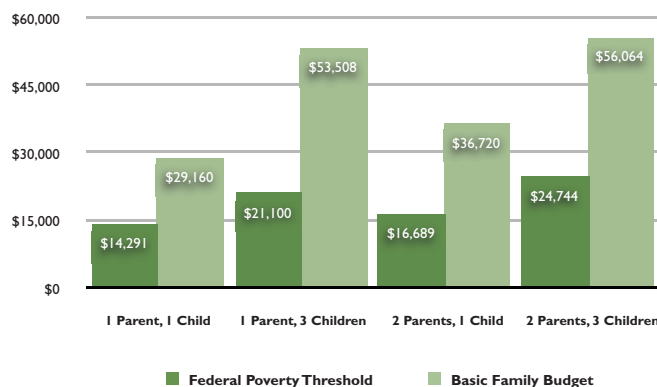
### Low-Income Needs

ACCESS, Inc., the Community Action Agency for Jackson County identified the following as the primary needs for the low-income population of Jackson County:

- Medical care
- Housing resources and assistance, including permanent affordable housing, rental assistance programs, and housing rehabilitation programs
- Energy assistance programs, especially for vulnerable populations
- Housing maintenance, weatherization, and preservation of existing housing
- Alcohol- and drug-free housing
- Support for seniors and people with disabilities so they can live independently in their own homes, improving their overall quality of life
- Food and nutrition programs, including emergency food boxes
- Employment opportunities and living-wage jobs

- Workforce education/training programs, including live-skills
- Emergency cash assistance and information and referral to other community resources
- Transportation services

**Basic Family Budget vs. Federal Poverty Threshold**



## Population and Economy

Jackson County Employment	2007 Number of Positions	2006-2007 Change in Number of Positions	2007 Percent Gain in Positions	2007 Average Pay Per Position
Industries with the Largest Number of Employees, 2007				
Trade, Transportation, & Utilities	19,655	177	1%	\$30,327
Education & Health Services	11,883	170	1%	\$40,252
Leisure & Hospitality	9,813	556	6%	\$15,057
Greatest Increase in the Number of Positions				
Leisure & Hospitality	9,813	556	6%	\$15,057
Manufacturing	6,906	278	4%	\$35,569
Trade, Transportation, & Utilities	19,655	177	1%	\$30,327
Greatest Decrease in the Number of Positions				
Other Services	2,954	-219	-7%	\$22,548
Professional & Business Services	7,801	-102	-1%	\$34,858
Construction	5,534	-241	-4%	\$37,473
Financial Activities	3,725	-67	-2%	\$38,747

## Population Change Since 2000

	2000-2007 % Growth	2000	2001	2002	2003	2004	2005	2006	2007
OREGON	 9.0%	3,436,750	3,471,700	3,504,700	3,541,500	3,582,600	3,631,440	3,690,505	3,745,455
JACKSON	 11.0%	182,200	184,700	187,600	189,100	191,200	194,515	198,615	202,310
Ashland	 10.3%	19,610	19,770	20,130	20,430	20,590	20,880	21,430	21,630
Butte Falls	 0.0%	445	440	440	440	440	445	445	445
Central Point	 34.4%	12,665	13,460	14,120	14,750	14,950	15,640	16,550	17,025
Eagle Point	 76.6%	4,850	5,410	5,950	6,630	6,980	7,585	8,340	8,565
Gold Hill	 0.5%	1,075	1,110	1,070	1,070	1,080	1,080	1,080	1,080
Jacksonville	 17.4%	2,245	2,360	2,370	2,370	2,410	2,490	2,555	2,635
Medford	 18.8%	63,720	64,730	66,090	68,080	69,220	70,855	73,960	75,675
Phoenix	 18.6%	4,085	4,270	4,420	4,510	4,570	4,660	4,740	4,845
Rogue River	 12.7%	1,850	1,860	1,870	1,900	1,950	1,995	2,010	2,085
Shady Cove	 20.5%	2,340	2,400	2,450	2,540	2,580	2,680	2,760	2,820
Talent	 15.1%	5,670	5,580	5,520	5,700	5,890	6,255	6,415	6,525
Unincorporated	 -7.3%	63,645	63,310	63,170	60,680	60,540	59,950	58,330	58,980

# Jackson County

## 2007 Community Action Agency Activities

### Medical Care

provided medical equipment to 3,270 people  
 direct medical care for 3,531 uninsured or underinsured children  
 health insurance for 1,858 children  
 prenatal care for 151 women

### Housing and Energy

security deposit assistance to 626 households  
 homelessness prevention services to 154 households  
 direct emergency shelter to 74 individuals with chronic mental illness  
 long-term rental assistance to 47 households.  
 energy assistance to 4,268 households  
 weatherization of 276 houses, and upgraded refrigerators in an 82-unit low-income housing complex.

ACCESS and the Housing Authority of Jackson County replaced windows in 99 units

### Support for Seniors and People with Disabilities

1,680 contacts with 592 seniors and people with disabilities to live as independently as possible

### Food and Nutrition

38,473 emergency food boxes for a total of 2,220,802 pounds of food to families and individuals  
 emergency food distribution increased by more than 30 percent in the past five years

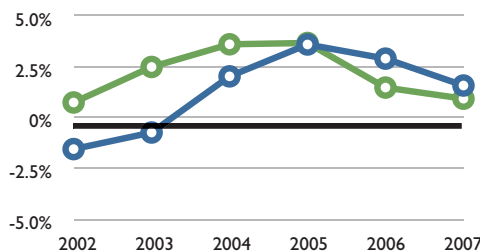
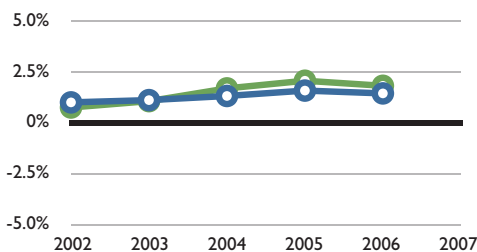
### Other Basic Needs

assistance to 65 families facing emergencies such as plumbing/septic repairs, electrical repairs, water heater replacements, furnace replacements, and car repairs

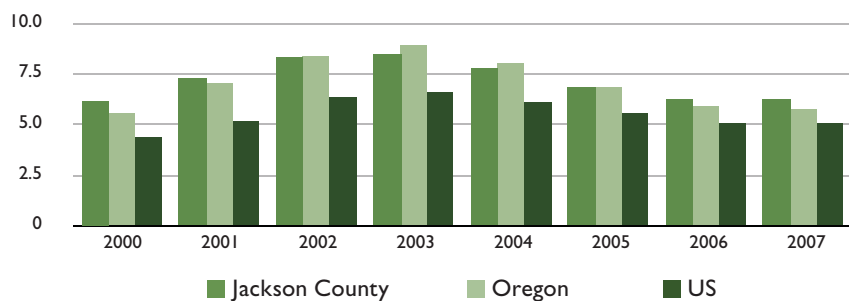
### Transportation

The Upper Rogue Community Center implemented a senior/disabled transportation program

## Population Change vs. Employment Change Since 2001



## Unemployment Rates



### Birth Rates

2002-2005, average Birth Rate per 1,000

Jackson County

11

State of Oregon

13

2002-2005, average Teenage Birth Rate per 1,000 females ages 15-19

Jackson County

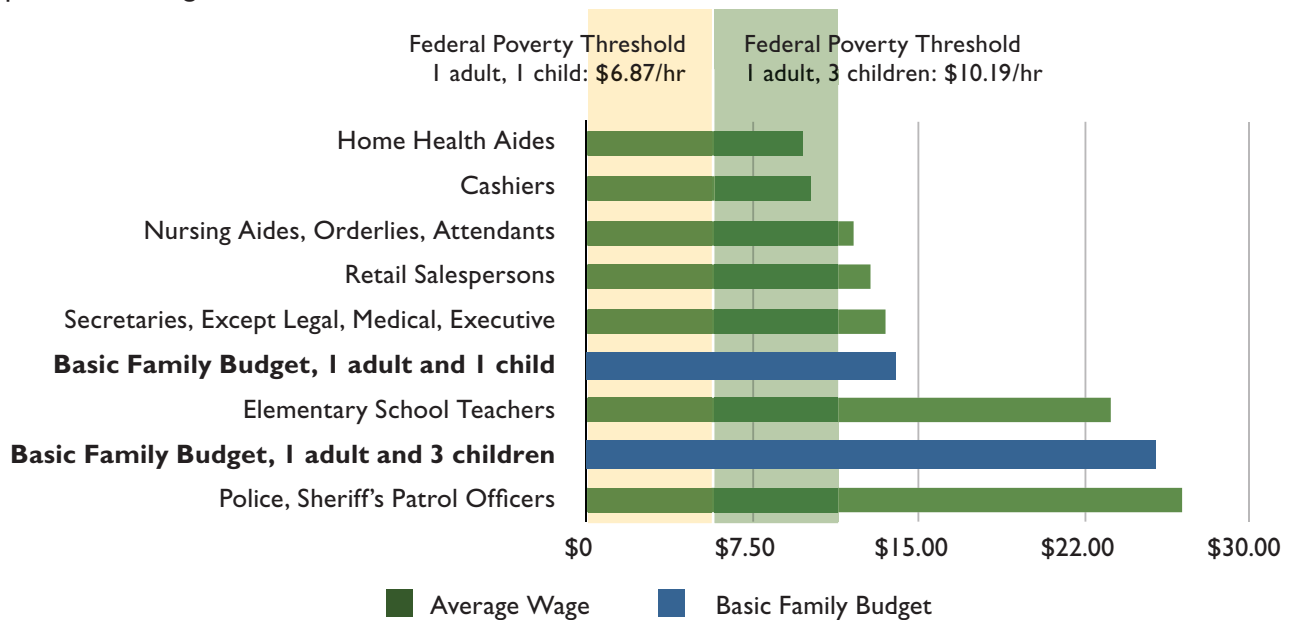
35

State of Oregon

34

## Average Hourly Wages 2007

### Occupational Earnings



## Poverty Population Characteristics

Poverty Rates by Age & Disability Status - 2007	% in Poverty	% of People in Poverty	% of all Population
Total Population	13%	-	-
Children younger than 18	17%	27%	22%
People 18-64	13%	61%	62%
People 65 and older	9%	12%	17%
People with a disability	18%	26%	18%

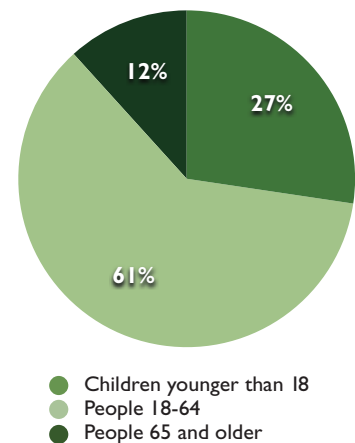
  

Poverty Rates by Family - 2007	% in Poverty	% of Families in Poverty	% of all Families
All Families	9%	-	-
Families with children under 18	14%	74%	46%
Single women with children under 18	31%	42%	12%

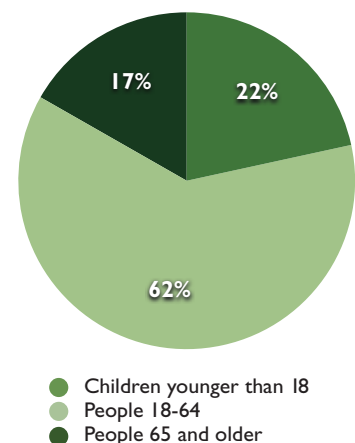
  

Poverty Rates by Race/Ethnicity - 2005-2007 avg	% in Poverty	% of People in Poverty	% of all Population
Total Population	13%	-	-
White	12%	87%	93%
Black	29%	1%	1%
American Indian	14%	1%	1%
Asian	16%	2%	1%
Pacific Islander	--	--	0%
Other	22%	2%	1%
2 or more races	28%	6%	3%
Hispanic origin	17%	11%	8%

## Poverty by Age – 2007



## Population by Age – 2007



-- indicates data was suppressed due to confidentiality.

# Jackson County

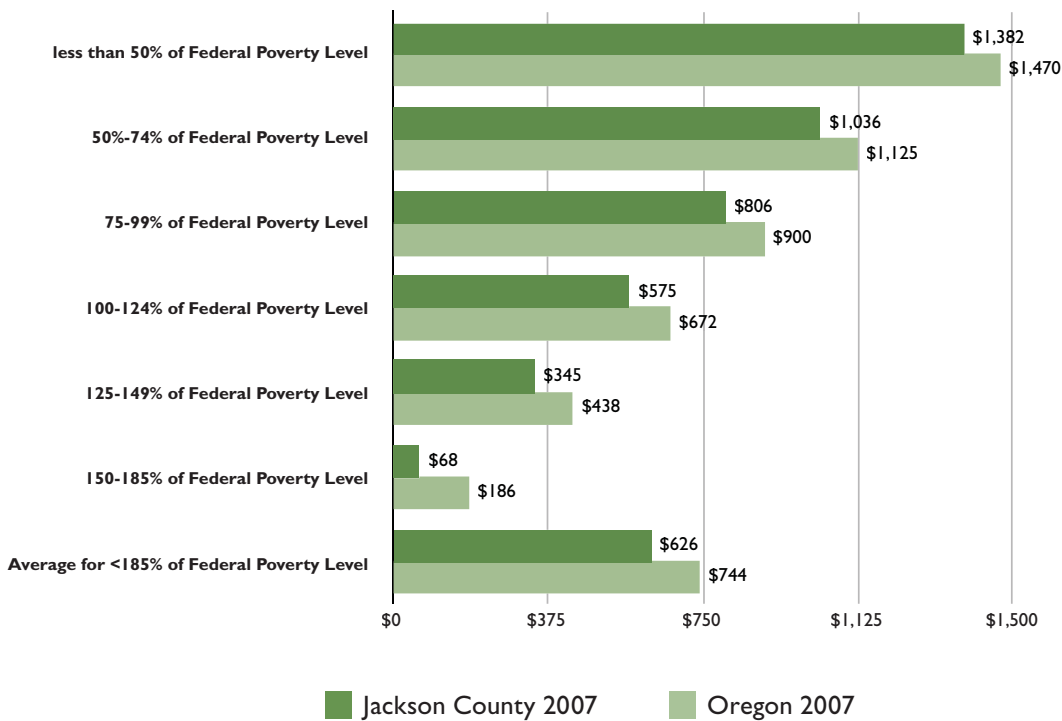
## 2007 Household Income

	Jackson County	Oregon	United States
<b>Median Household Income</b>	<b>\$44,524</b>	<b>\$48,730</b>	<b>\$50,740</b>
Owner Median Household Income	\$57,687	\$61,690	\$63,059
Renter Median Household Income	\$29,136	\$30,186	\$30,915
Total Households	81,616	1,471,965	112,377,977
Renters percent income spent on housing	32%	29%	30%
Owners percent income spent on housing	24%	23%	22%
<b>Extremely Low Income (30% of Median Household Income)</b>	<b>\$13,357</b>	<b>\$14,619</b>	<b>\$15,222</b>
Households earning 0-30% Median Household Income	10,530	179,761	14,253,915
Burdened households earning 0-30% Median Household Income	8,766	149,621	11,355,585
% Burdened	<b>83%</b>	<b>83%</b>	<b>80%</b>
<b>Very Low Income (50% of Median Household Income)</b>	<b>\$22,262</b>	<b>\$24,365</b>	<b>\$25,370</b>
Households earning 31-50% Median Household Income	7,749	139,492	10,880,250
Burdened households earning 31-50% Median Household Income	5,968	96,863	7,043,215
% Burdened	<b>77%</b>	<b>69%</b>	<b>65%</b>
<b>Low Income (80% of Median Household Income)</b>	<b>\$35,619</b>	<b>\$38,984</b>	<b>\$40,592</b>
Households earning 51-80% Median Household Income	14,644	238,001	17,456,318
Burdened households earning 51-80% Median Household Income	9,237	122,962	8,364,889
% Burdened	<b>63%</b>	<b>52%</b>	<b>48%</b>
<b>Workforce (120% of Median Household Income)</b>	<b>\$53,429</b>	<b>\$58,476</b>	<b>\$60,888</b>
Households earning 81-120% Median Household Income	13,606	263,859	19,191,149
Burdened households earning 81-120% Median Household Income	4,799	85,103	5,823,144
% Burdened	<b>35%</b>	<b>32%</b>	<b>30%</b>

Note: Burden is defined as spending more than 30 percent of household income on gross housing costs (includes utilities).

## Energy

### Individual Household Energy Shortfall



## Health Indicators

2006 Percent of Population without Health Insurance (by Region)

Jackson County	State of Oregon
<b>16%</b>	<b>16%</b>

2007 Number of Primary Care Providers per 100,000

Jackson County	State of Oregon
<b>119</b>	<b>112</b>

2006 Percentage of 2 year olds who are "adequately" immunized

Jackson County	State of Oregon
<b>72%</b>	<b>71%</b>

2002-2005, average % of adults who consume at least 5 servings of fruits & vegetables per day

Jackson County	State of Oregon
<b>26%</b>	<b>26%</b>

2002-2005, average Percent of Adults who Smoke Cigarettes

Jackson County	State of Oregon
<b>25%</b>	<b>20%</b>



Community members work together to pack food boxes.

# Jackson County

## How We Help

Jackson County Services	2000	2004	2005	2006	2007
New units created with OHCS funding resources	0	64	182	52	48
OHCS funding for affordable housing	\$0	\$1,044,977	\$5,088,912	\$1,095,161	\$2,819,000
Single Family Loans for low-income households-#	2	0	0	3	2
Single Family Loans for low-income households-\$	\$208,693	\$0	\$0	\$376,937	\$317,578
Households receiving energy assistance-#	--	4,225	4,507	4,686	4,403
Units weatherized-#	--	461	311	332	268
Units weatherized-\$	--	\$1,217,200	\$796,584	\$1,089,647	\$813,208
Average per unit weatherized-\$	--	\$2,640	\$2,561	\$3,282	\$3,034
Oregon Health Plan enrollment-%	13%	12%*	11%	11%	11%
Students eligible for free/reduced lunch-#	10,028	11,980	12,010	11,814	12,108
Students eligible free/reduced lunch-%	34%	41%	41%	41%	42%
Population receiving Food Stamps-%	--	19%	18%	18%	19%
Population receiving TANF-%	--	1%	2%	2%	2%

\* indicates that data cannot be compared to previous years due to changes in data collection.  
 -- indicates data is not available.

## Homelessness

### One Night Overview

Jackson County 2008 One Night Count	
Total Homeless Households	321
<b>Total Homeless Population</b>	<b>399</b>
<i>Total in Emergency Shelter</i>	<b>153</b>
<i>Total in Transitional Housing</i>	<b>130</b>
<i>Total Turnaway &amp; Street Count</i>	<b>116</b>
<b>Chronically Homeless Population</b>	<b>105</b>
<b>Unaccompanied Pregnant Youth</b>	<b>10</b>
<b>Households with Children</b>	<b>36</b>
Stated Causes of Homelessness:**	
Couldn't Afford Rent	31%
Alcohol or Drug Issue (Self)	30%
Unemployed	30%
Mental or Emotional Disorder	20%
Alcohol or Drug Issue (Home)	17%
Kicked out by Family or Friends	15%
Domestic Violence	14%
Other	13%
Criminal History	13%
By Choice	13%

\*\*Respondents may give more than one reason

### Risk Factors

2006-2007, school year  
High School Dropout Rate

Jackson  
County  
**4%**

State of  
Oregon  
**4%**

2005-2006, school year  
Percent of 8th graders who  
reported using illicit drugs in  
the previous 30 days

Jackson  
County  
**17%**

State of  
Oregon  
**16%**

2006  
Criminal Offenses,  
percent of population

Jackson  
County  
**12%**

State of  
Oregon  
**12%**