

Major Findings

Between 2000 and 2007, Umatilla County population grew only 4 percent, and the number of poor grew 19 percent. The 2007 poverty rate reached 15 percent, for an estimated 10,119 county residents living with incomes less than the federal poverty level.

Unemployment fell slightly from 2000 to 2007 to 5.9 percent, above the state average. Since 2001, the local economy added nearly 1,000 jobs.

OHCS analyzed the costs of basic needs and determined that a two-parent family with one young child needed a combined hourly income of \$16.56. When both parents worked full-time work for minimum wage, they could not pay all of their living expenses.

	Umatilla County	Oregon	United States	
2007	Number in Poverty	10,119	474,189	38,052,247
	Percent in Poverty	14.9%	12.9%	13.0%
2000-2007	Percent change in Number in Poverty	18.7%	22.0%	12.2%
	Percent change in Population	4.2%	9.5%	7.2%
	Number of additional people in Poverty	+ 1,595	+ 85,449	+ 4,152,435
	Number of additional Population	+ 2,943	+ 326,056	+ 20,199,253

Community Action Agency

Community Action Program of East Central Oregon (CAPECO)

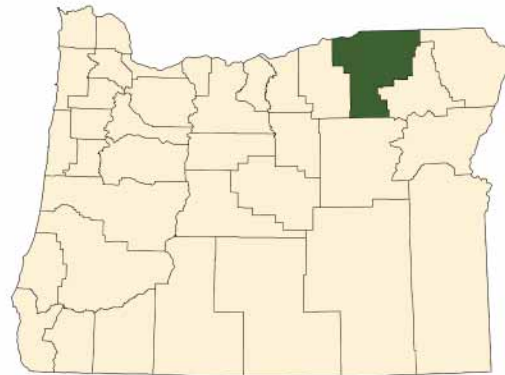
721 SE 3rd Street Ste. D

Pendleton, OR 97801

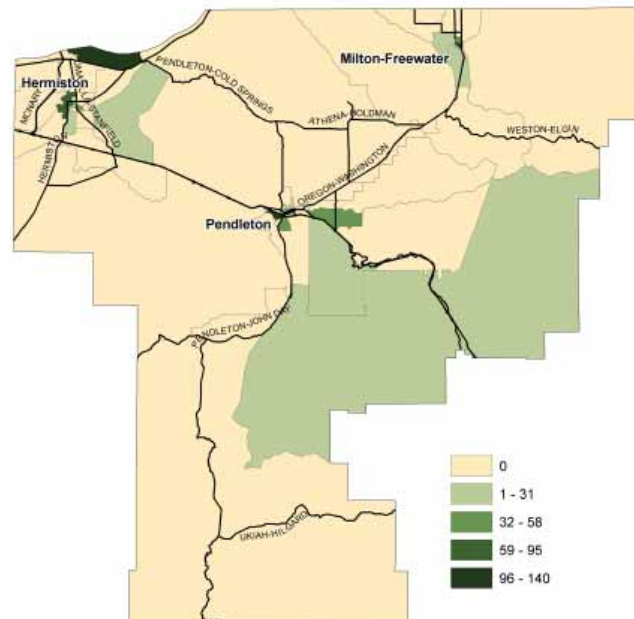
(800) 752-1139

Fax (541) 276-7541

www.capeco-works.org



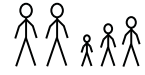
Affordable Housing Units by Census Block Group



Umatilla County

Basic Family Budget, an Alternative to the Federal Poverty Threshold

2007 Umatilla County's
Basic Family Budget



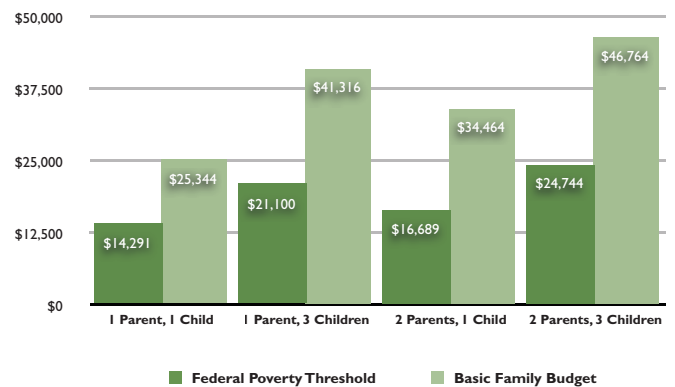
Householder(s)	1 Parent	1 Parent	2 Parents	2 Parents
Children	3-5 yr old	3-5 yr old, 6-8 yr old, and 9-11 yr old	3-5 yr old	3-5 yr old, 6-8 yr old, and 9-11 yr old
Housing	\$580	\$814	\$580	\$814
Food	\$316	\$615	\$512	\$774
Child Care	\$382	\$927	\$382	\$927
Transportation	\$390	\$390	\$524	\$524
Healthcare	\$247	\$308	\$359	\$424
Other Necessities	\$278	\$443	\$339	\$492
Taxes	-\$81	-\$54	\$176	-\$58
Monthly Total	\$2,112	\$3,443	\$2,872	\$3,897
Annual Total	\$25,344	\$41,316	\$34,464	\$46,764
Hourly Wage needed for Basic Family Budget	\$12.18	\$19.86	\$8.28	\$11.24
Federal Poverty Threshold (FPT)	\$14,291	\$21,100	\$16,689	\$24,744
Percent of Basic Family Budget	56.4%	51.1%	48.4%	52.9%

Low-Income Needs

Community Action Program of East Central Oregon identified the following needs of Umatilla County's low-income population:

- Energy assistance and conservation education
- Hunger prevention
- Employment training
- Housing assistance
- Housing maintenance: weatherization and rehabilitation
- Senior Nutrition
- Medical assistance

Basic Family Budget vs. Federal Poverty Threshold



Population and Economy

Umatilla County Employment	2007 Number of Positions	2006-2007 Change in Number of Positions	2007 Percent Gain in Positions	2007 Average Pay Per Position
Industries with the Largest Number of Employees, 2007				
Trade, Transportation, & Utilities	6,002	148	3%	\$31,306
Local Government	4,589	93	2%	\$33,368
Manufacturing	3,492	-165	-5%	\$31,013
Greatest Increase in the Number of Positions				
Natural Resources & Mining	2,541	271	12%	\$24,194
Trade, Transportation, & Utilities	6,002	148	3%	\$31,306
Leisure & Hospitality	2,333	119	5%	\$12,522
Greatest Decrease in the Number of Positions				
Manufacturing	3,492	-165	-5%	\$31,013
Professional & Business Services	2,238	-74	-3%	\$42,920
Federal Government	906	-11	-1%	\$61,065
State Government	2,043	-1	-0%	\$39,469

Population Change Since 2000

	2000-2007 % Growth	2000	2001	2002	2003	2004	2005	2006	2007
OREGON	9.0%	3,436,750	3,471,700	3,504,700	3,541,500	3,582,600	3,631,440	3,690,505	3,745,455
UMATILLA	2.0%	70,850	70,900	71,000	71,100	72,250	72,395	72,190	72,245
Adams	11.7%	300	310	320	330	330	330	330	335
Athena	3.7%	1,225	1,270	1,250	1,270	1,270	1,270	1,270	1,270
Echo	8.4%	655	670	690	690	690	695	705	710
Helix	24.3%	185	180	180	180	190	190	210	230
Hermiston	19.0%	13,260	13,560	14,120	14,540	14,700	15,025	15,410	15,780
Milton-Freewater	0.8%	6,495	6,560	6,450	6,500	6,500	6,540	6,585	6,550
Pendleton	5.3%	16,385	16,600	16,600	16,830	16,850	17,025	17,310	17,260
Pilot Rock	1.6%	1,535	1,540	1,520	1,540	1,540	1,545	1,560	1,560
Stanfield	8.3%	1,990	1,980	1,980	1,980	1,980	2,150	2,155	2,155
Ukiah	2.0%	255	250	250	260	260	260	260	260
Umatilla	27.9%	5,035	5,750	5,990	6,070	6,270	6,370	6,385	6,440
Weston	3.5%	720	720	720	720	720	725	730	745
Unincorporated	-16.9%	22,810	21,510	20,930	20,190	20,950	20,270	19,280	18,950

Umatilla County

2007 Community Action Agency Activities

helped clients access federal economic stimulus payments

Energy

conducted Energy Education workshops for households accessing payment assistance to promote energy conservation

offered case management services improving the payment history of participants and allowing them to access equal pay plans that make payments more affordable

Hunger prevention

increased the food supply for distribution to county food banks through new funding and a community garden

Employment Training

provided job search, resume building, and computer classes with local partners

improved the marketability of individuals so that they could acquire jobs

Housing Assistance

safe and affordable transitional housing, combined with case management services, improved the ability of households to secure permanent housing

Housing Maintenance

weatherized homes

partnered with another agency to provide home rehabilitation services

coordinated a project with the Confederated Tribes of the Umatilla Indian Reservation to install compact fluorescent light, faucet aerators, and low-flow shower heads for 143 residents

Senior Nutrition

increased the number of people attending congregate meals

saw a reduction in the number of federally allotted slots for supplemental food boxes was reduced

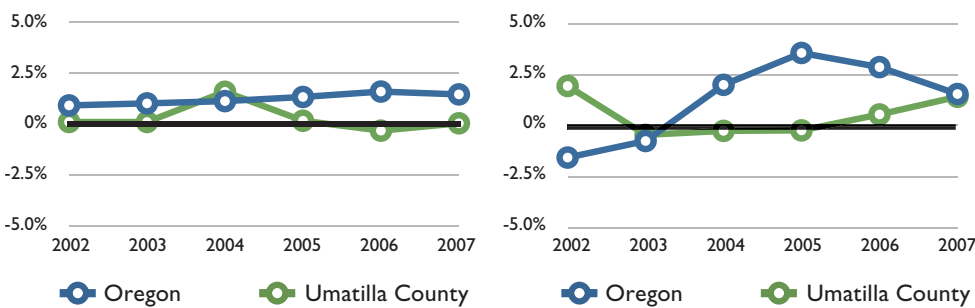
offered health and nutrition education at meal sites and through flyers

Medical assistance

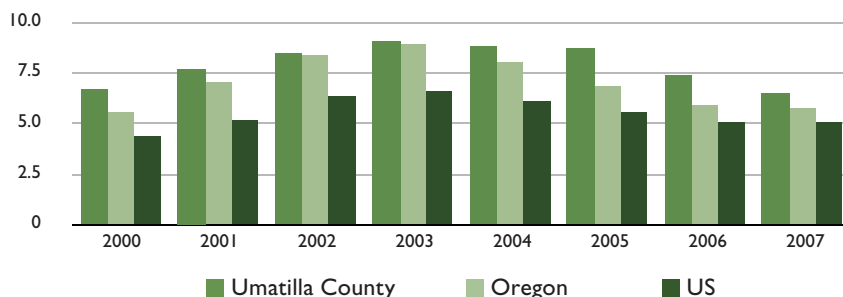
helped individuals apply for the Medicaid prescription programs

informed low-income households about Medicaid eligibility requirement

Population Change vs. Employment Change Since 2001



Unemployment Rates



Birth Rates

2002-2005, average Birth Rate per 1,000

Umatilla County

15

State of Oregon

13

2002-2005, average Teenage Birth Rate per 1,000 females ages 15-19

Umatilla County

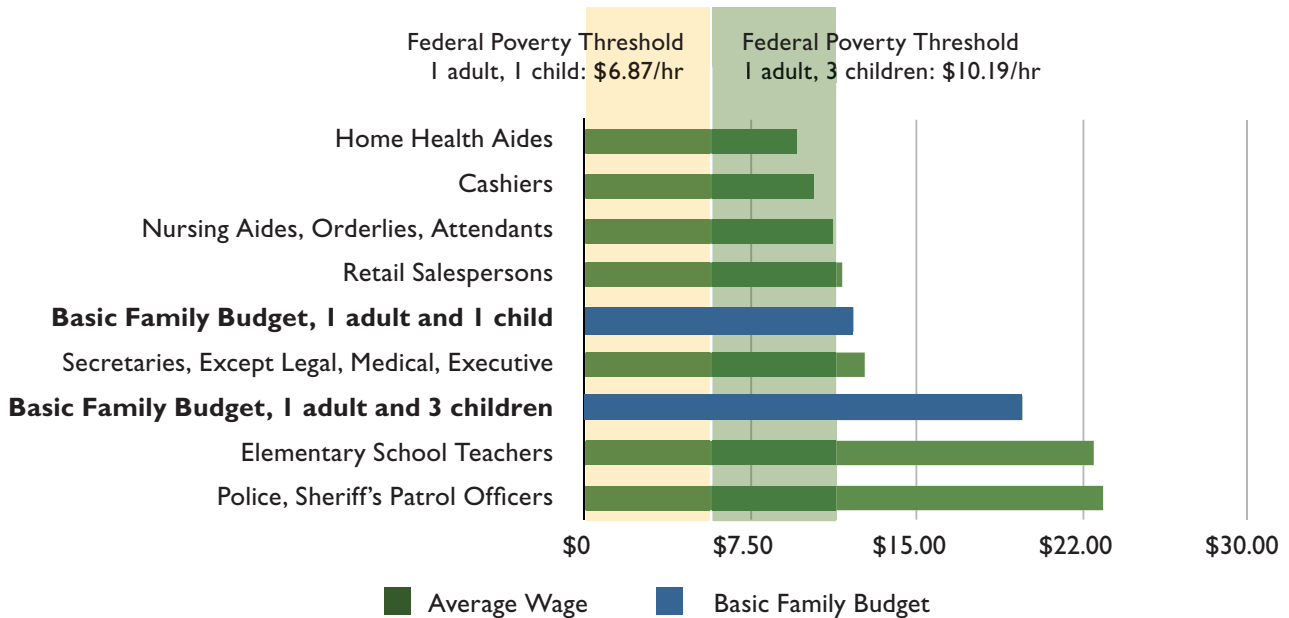
53

State of Oregon

34

Average Hourly Wages 2007

Occupational Earnings



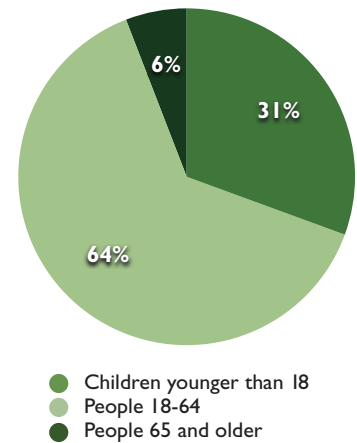
Poverty Population Characteristics

Poverty Rates by Age & Disability Status - 2007	% in Poverty	% of People in Poverty	% of all Population
Total Population	15%	-	-
Children younger than 18	17%	31%	27%
People 18-64	16%	64%	60%
People 65 and older	7%	6%	13%
People with a disability	22%	30%	20%

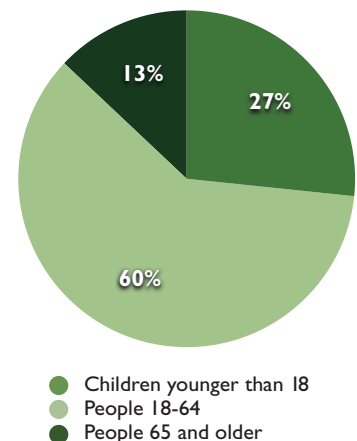
Poverty Rates by Family - 2007	% in Poverty	% of Families in Poverty	% of all Families
All Families	10%	-	-
Families with children under 18	15%	72%	50%
Single women with children under 18	28%	29%	11%

Poverty Rates by Race/Ethnicity - 2005-2007 avg.	% in Poverty	% of People in Poverty	% of all Population
Total Population	16%	-	-
White	15%	86%	87%
Black	--	--	1%
American Indian	27%	5%	3%
Asian	--	--	1%
Pacific Islander	--	--	0%
Other	8%	3%	5%
2 or more races	25%	6%	4%
Hispanic origin	27%	32%	18%

Poverty by Age – 2007



Population by Age – 2007



-- indicates data was suppressed due to confidentiality.

Umatilla County

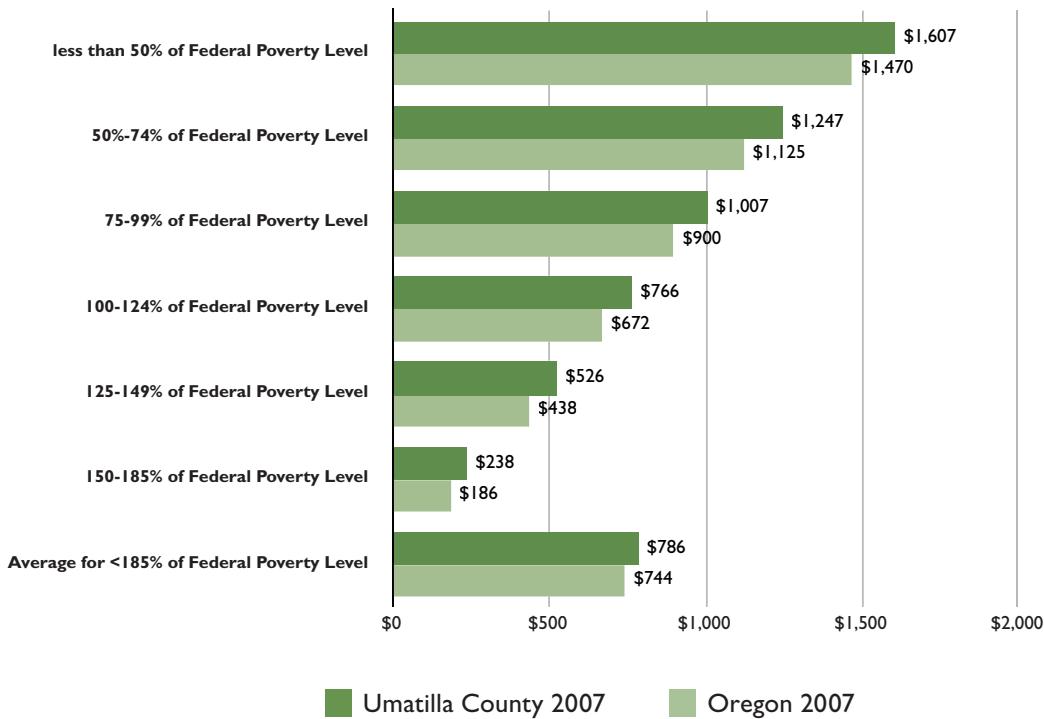
2007 Household Income

	Umatilla County	Oregon	United States
Median Household Income	\$38,631	\$48,730	\$50,740
Owner Median Household Income	\$53,264	\$61,690	\$63,059
Renter Median Household Income	\$27,520	\$30,186	\$30,915
Total Households	26,869	1,471,965	112,377,977
Renters percent income spent on housing	25%	29%	30%
Owners percent income spent on housing	20%	23%	22%
Extremely Low Income (30% of Median Household Income)	\$11,589	\$14,619	\$15,222
Households earning 0-30% Median Household Income	2,823	179,761	14,253,915
Burdened households earning 0-30% Median Household Income	2,064	149,621	11,355,585
% Burdened	73%	83%	80%
Very Low Income (50% of Median Household Income)	\$19,316	\$24,365	\$25,370
Households earning 31-50% Median Household Income	1,882	139,492	10,880,250
Burdened households earning 31-50% Median Household Income	1,376	96,863	7,043,215
% Burdened	73%	69%	65%
Low Income (80% of Median Household Income)	\$30,905	\$38,984	\$40,592
Households earning 51-80% Median Household Income	5,398	238,001	17,456,318
Burdened households earning 51-80% Median Household Income	2,312	122,962	8,364,889
% Burdened	43%	52%	48%
Workforce (120% of Median Household Income)	\$46,357	\$58,476	\$60,888
Households earning 81-120% Median Household Income	4,962	263,859	19,191,149
Burdened households earning 81-120% Median Household Income	1,465	85,103	5,823,144
% Burdened	30%	32%	30%

Note: Burden is defined as spending more than 30 percent of household income on gross housing costs (includes utilities).

Energy

Individual Household Energy Shortfall



Health Indicators

2006 Percent of Population without Health Insurance (by Region)

Umatilla County	State of Oregon
14%	16%

2007 Number of Primary Care Providers per 100,000

Umatilla County	State of Oregon
75	112

2006 Percentage of 2 year olds who are "adequately" immunized

Umatilla County	State of Oregon
73%	71%

2002-2005, average % of adults who consume at least 5 servings of fruits & vegetables per day

Umatilla County	State of Oregon
20%	26%

2002-2005, average Percent of Adults who Smoke Cigarettes

Umatilla County	State of Oregon
26%	20%



Community members package food for people experiencing tough times.

Umatilla County

How We Help

Umatilla County Services	2000	2004	2005	2006	2007
New units created with OHCS funding resources	81	160	70	11	179
OHCS funding for affordable housing	\$3,263,270	\$1,708,616	\$951,586	\$1,150,295	\$9,372,769
Single Family Loans for low-income households-#	34	22	29	27	33
Single Family Loans for low-income households-\$	\$2,323,702	\$1,962,117	\$2,535,973	\$2,423,439	\$3,336,720
Households receiving energy assistance-#	2,170	2,220	2,376	2,130	2,326
Units weatherized-#	--	138	159	94	66
Units weatherized-\$	--	\$399,121	\$180,846	\$276,611	\$277,000
Average per unit weatherized-\$	--	\$2,892	\$1,137	\$2,943	\$4,197
Oregon Health Plan enrollment-%	13%	14%*	14%	14%	14%
Students eligible for free/reduced lunch-#	5,413	6,908	7,554	7,248	7,589
Students eligible free/reduced lunch-%	42%	52%	56%	53%	56%
Population receiving Food Stamps-%	--	20%	21%	21%	23%
Population receiving TANF-%	--	2%	2%	2%	3%

* indicates that data cannot be compared to previous years due to changes in data collection.
 -- indicates data is not available.

Homelessness

One Night Overview

Umatilla County 2008 One Night Count	
Total Homeless Households	77
Total Homeless Population	109
<i>Total in Emergency Shelter</i>	14
<i>Total in Transitional Housing</i>	58
<i>Total Turnaway & Street Count</i>	37
Chronically Homeless Population	15
Unaccompanied Pregnant Youth	0
Households with Children	15
Stated Causes of Homelessness:**	
Drug/Alcohol (Self)	47%
Criminal History	39%
Evicted by landlord	12%
Kicked out by family/friends	10%
Unemployed	9%
Couldn't afford rent	8%
Drug/Alcohol (In Home)	8%
Domestic Violence	5%
Poor Rental History	3%
By Choice	3%

**Respondents may give more than one reason

Risk Factors

2006-2007, school year
High School Dropout Rate

Umatilla
County
3%

State of
Oregon
4%

2005-2006, school year
Percent of 8th graders who
reported using illicit drugs in
the previous 30 days

Umatilla
County
3%

State of
Oregon
16%

2006
Criminal Offenses,
percent of population

Umatilla
County
20%

State of
Oregon
12%