

Clackamas County

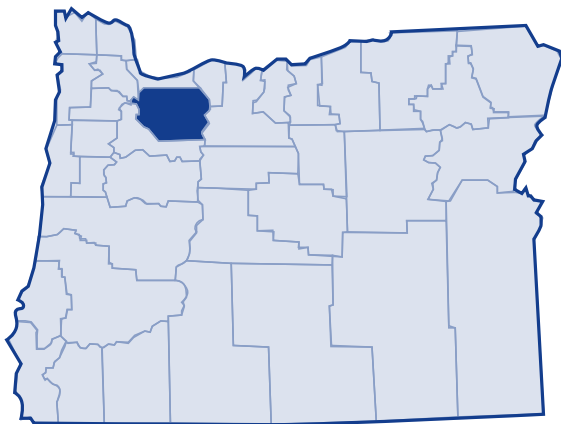
Major findings

Clackamas County's poverty rates were lower than the state and national average from 1979 to 1999. The county's median income rose to \$52,080 in 1999, exceeded only by Washington County.

Minorities, such as Hispanic and Other, were more likely to experience poverty in Clackamas County in 1999. Of those in poverty in Clackamas County, 45 percent earned half of the federal poverty threshold or less for their family type. Incomes at the federal poverty threshold in Clackamas County were 39.9 to 45 percent of the amount needed to afford the county's basic family budget.

Although more than 70 percent of county residents owned their own home in 1999, a quarter of Clackamas County homeowners spent 30 percent or more of their income on housing. Over 40 percent of renters spent 30 percent or more of their income on rental costs.

In 2003, 13.6 percent of Clackamas County residents received services from the Department of Human Services.¹



Low-income needs

Clackamas County Social Services prioritized the needs of the low-income population in Clackamas County as follows:²

- Provide safe, permanent, housing affordable to persons and households of low and moderate incomes.
- Develop affordable public transportation services designed to provide access to employment, commercial, civic, and social services.
- Access to food resources, including emergency food pantries, food stamps, and child nutrition resources.
- Enhance Non-English speakers access to services in a culturally sensitive atmosphere.
- A coordinated network of health and social services designed to meet the wide range of needs of low income, elderly, and person with disabilities.
- Develop a proactive strategy within the county to attract family wage jobs that include essential benefits.
- Develop programs and services that assist citizens to remain in their own homes, both through intervention services, as well as on-going supports, including financial management and personal care.
- Make available comprehensive information to the community about available services through a coordinated system of accessible information and referral.
- Create a countywide citizen advisory group to advise the County on affordable housing concerns and needs.
- Develop, maintain, and strengthen opportunities for individuals of all ages to participate in meaningful ways as volunteers within their own communities.

Clackamas County

Growth

According to the 2000 Census, Clackamas County grew by 21.4 percent, from 1989 to 1999. The US Census Bureau determined the poverty status of 335,122 county residents and found that 6.6 percent (21,969 people) lived below the poverty threshold in 1999. This was an increase of 15 percent in the number of persons living in poverty (19,103 people) in 1989. The overall percent of Clackamas County's population living in poverty decreased from 1989 to 1999, but the number of people living in poverty did not.

20-year trend

In the 20 years after 1979, the poverty rate in Clackamas County increased from 6 percent of the population to 6.6 percent. The number of persons in poverty rose from 14,458 people to 21,969 people. Clackamas County's poverty rates remained lower than the state and national poverty rates throughout this period.

Poverty and age

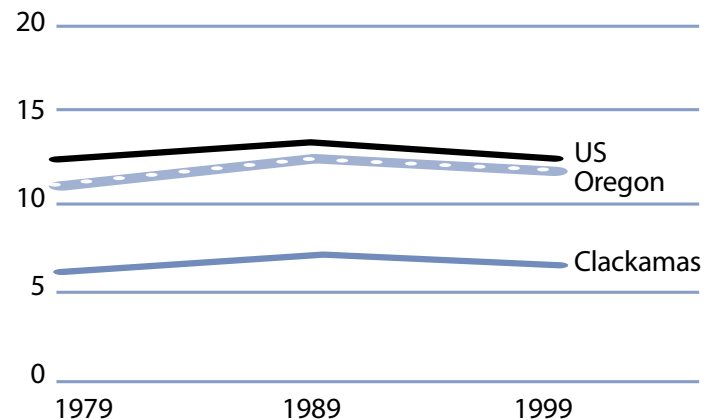
In the 2000 Census, among all age categories examined, children 5 years of age and younger experienced the highest rate of poverty at 10.1 percent. Children under 18 years of age experienced poverty at 8.1 percent. People 65 and older experienced the lowest rate at 5.1 percent. Over the 20-year period from 1979 to 1999, the rate of poverty decreased for all age categories.

Poverty in selected communities
Number of persons below poverty level
(poverty rate)

	1989	1999	Percent Change <small>(rate difference)</small>
Clackamas County	19,103 (6.7%)	21,967 (6.6%)	15.0% (-0.4%)
Oregon Statewide	344,867 (12.4%)	388,740 (11.6%)	12.7% (-0.8%)
United States	31,742,864 (13.1%)	33,899,812 (12.4%)	6.8% (-0.7%)

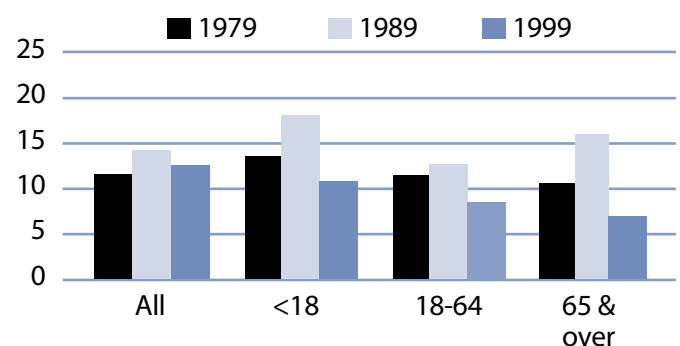
Source: US Census. County numbers have been rounded and, therefore, may not add exactly to totals.

Poverty rates 1979-1999



Source: US Census.

Rate of poverty by age



Source: US Census.

Clackamas County

Poverty and Clackamas County families

In 1999, 4,279 Clackamas County families lived in poverty (4.6 percent). Of the families in poverty, 57.7 percent (2,468 families) had a worker and 16.1 percent (691 families) had a full-time year-round worker.

The poverty rate was higher for families with children. Families with at least one child under 18 experienced poverty at a rate of 7.1 percent. Families with a child younger than 5 years experienced poverty at a higher rate of 10.3 percent. The rate for families with children headed by single mothers was 22.1 percent and the rate was even higher for single mothers with younger children (less than 5 years) at 32.5 percent.

The poverty rate for married couple families with children under 18 was lower at 3.6 percent. From 1979 to 1999, the number of female-headed households with children (no husband present) who lived in poverty increased from 1,045 families in 1979 to 1,674 families in 1999.

Poverty and race/ethnicity

Among racial/ethnic groups,³ White residents comprised the majority of people in poverty at 81.3 percent. When examining poverty based on race/ethnicity, however, the poverty rate among White was 5.8 percent

Other and Hispanic Origin experienced disproportionately higher rates of poverty. The poverty rate among Other was 25.7 percent, while Hispanic Origin had a rate of 20.7 percent. From 1989 to 1999 poverty improved for most, most racial categories, but not for Other and Hispanic.

Clackamas County families in poverty

Number Below Poverty Level (poverty rate)	1979		1989		1999		% Change 1979-99 (rate difference)
	1979	1989	1979	1989	1999	1999	
All Families	3,032 (4.6%)	3,609 (4.7%)	4,279 (4.6%)				41.1% (0.0%)
With Children under 18	2,201 (6.0%)	2,755 (7.0%)	3,325 (7.1%)				51.1% (1.1%)
Female-headed with Children under 18	1,045 (23.2%)	1,465 (28.0%)	1,674 (22.1%)				60.2% (-1.1%)

Source: US Census. County numbers have been rounded and, therefore, may not add exactly to totals.

Clackamas County poverty and race/ethnicity

Race/Ethnicity	% Total 1999 Population (population)	% Poverty 1999 Population (poverty population)	Poverty Rate by Race 1999	Poverty Rate by Race 1989
White	91.2% (305,531)	81.3% (17,866)	5.8%	6.6%
Black	0.6% (2,113)	1.0% (209)	9.9%	28.5%
American Indian	0.7% (2,065)	0.8% (180)	8.7%	12.0%
Asian/Pacific Islander	2.4%/0.2% (8,092/599)	1.7%/0.4% (377/93)	4.7%/15.5%	13.3%*
Other	2.4% (7,881)	9.2% (2,027)	25.7%	22.2%
2 or More Races	2.6% (8,841)	5.5% (1,217)	13.8%	NA
Hispanic Origin	5.0% (16,852)	15.9% (3,487)	20.7%	20.3%

* Asian and Pacific Islander were not separate categories in the 1990 Census.

Clackamas County

County income

On a per capita basis, Clackamas County's personal income was \$35,543 in 2002, about 123 percent of the state average of \$28,792, and 115 percent of the national average, \$30,906. Between 2001 and 2002, per capita income in Clackamas County fell 0.4 percent. From 1992 to 2002, per capita income grew at an average annual rate of 4.7 percent. Average earnings per job for 2001 were \$34,194 in Clackamas County compared to \$33,063 for the state.⁴

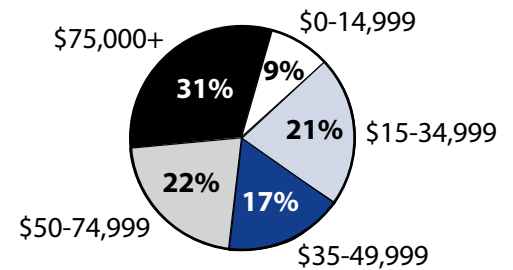
Poverty thresholds

Segmenting Census data by income reveals more detail about the people experiencing poverty in Clackamas County. The 2000 Census showed that 9,881 people or 45 percent of those living below the federal poverty threshold were actually earning 50 percent less income than the poverty threshold. Other segments of the population earned equal to or above the poverty level but still needed assistance. In Oregon, 185 percent of the poverty level is the income guideline used for federal food programs such as food stamps, child nutrition, and WIC. In 1999, 16.5 percent of Clackamas County's population, or 55,375 people earned below 185 percent of the poverty threshold.

Public assistance

Participation in public assistance programs serves as an indirect measure—or indicator—of the extent of poverty and the measures taken to serve the public. According to the 2000 Census, 2,797 households or 2.2 percent of all households in Clackamas County reported public assistance income. The average amount of public assistance income for 1999 was \$2,948. The 20-year trend showed a decrease in the number of households that reported receiving public assistance income, from 3,758 households or 4.4 percent of all households in 1979.

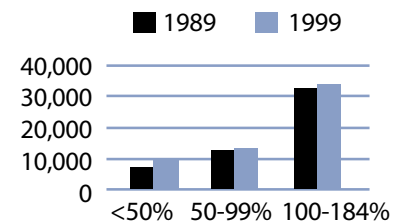
1999 household income distribution—Clackamas County



Source: US Census.

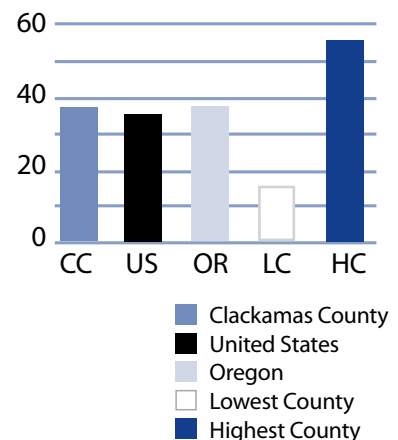
Note: The median household income in Clackamas County was \$52,080 in 1999 compared to \$35,419 in 1989 (55.9 percent increase).

Number of persons in poverty Threshold percentiles



Source: US Census.

Public assistance in Oregon Rate per thousand population



Source: US Census.

Clackamas County

Basic family budget

According to US Department of Agriculture statistics released in October 1999, about 12.6 percent of Oregon households have difficulty meeting their basic need for food. This chart outlines typical expenses for four family types in Clackamas County and the corresponding income those families would need to meet their expenses.

Using this basic budget, an adult with three children who earned Clackamas County's median family income could not afford the basic family budget in 1999.

To learn more about this basic family budget, see Methodology and Data References section.

Wages

According to the Oregon Employment Department, the average weekly wage in Clackamas County in 1999 was \$600.80. Of all sectors, the federal government had the highest weekly average of \$834.11 and retail trade had the lowest weekly average of \$381.21.

This chart illustrates a family's ability to be self-sufficient based on earnings of average wages for Clackamas County. The two-worker scenario relies on both workers earning average wages.

According to the basic family budget, an adult with three children who worked full-time and earned average wages in Clackamas County could not afford basic family expenses.

Clackamas County's basic family budget

Basic Family Budget/Monthly	1 Adult/ 1 Child	1 Adult/ 3 Children	2 Adults/ 1 Child	2 Adults/ 3 Children
Housing	\$645	\$897	\$645	\$897
Food	\$230	\$489	\$388	\$647
Child Care	\$413	\$896	\$413	\$896
Transportation	\$158	\$158	\$222	\$222
Health Care	\$245	\$245	\$293	\$293
Other Necessities	\$271	\$430	\$320	\$479
Taxes	\$438	\$671	\$497	\$735
Basic Family Budget Needed/Monthly	\$2,400	\$3,786	\$2,778	\$4,169
Basic Family Budget Total/Annual	\$28,798	\$45,426	\$33,337	\$50,027
Median Family Income (Census 2000)	\$29,198	\$29,198	\$69,579	\$69,579
Median Family Income as % of Basic Budget	101.4%	64.3%	208.7%	139.1%

Poverty and Clackamas County's basic family budget

Basic Family Budget/Monthly	1 Adult/ 1 Child	1 Adult/ 3 Children	2 Adults/ 1 Child	2 Adults/ 3 Children
Poverty Threshold	\$11,483	\$16,954	\$13,410	\$19,882
% of Basic Budget	39.9%	37.3%	40.2%	39.7%

Clackamas County wages and the basic family budget

	1 Worker	1 Worker	2 Workers	2 Workers
Average Monthly Wage (AMW)*	\$2,583	\$2,583	\$5,166	\$5,166
	1 Adult/ 1 Child	1 Adult/ 3 Children	2 Adults/ 1 Child	2 Adults/ 3 Children
Self Sufficiency Wage (SSW)**	\$2,400	\$3,786	\$2,778	\$4,169
Difference (SSW-AMW)	\$183	-\$1,203	\$2,388	\$997
Wage as % of Self Sufficiency	107.6%	68.2%	186.0%	123.9%

* Source: 1999 Oregon Covered Employment and Payrolls.
** Based on Basic Family Budget for Clackamas County.

Clackamas County

Clackamas County Poverty Measures	1995	2000	2001	2002	2003
Population	278,850 ¹	338,391 ²	345,276	352,427	357,435
% of People Living Below Poverty Level	6.9% ¹	6.6% ²	NA	NA	NA
Median Income	\$35,419 ¹	\$52,080 ²	NA	NA	NA
Unemployment Rate	3.2	3.4	4.8	6.7	7.4
8th Grade Drug Use	18.7% ³	11.9%	NA	14.0%	NA
HS Dropout	5.7% ⁴	3.3%	3.0%	2.9%	NA
Teen Pregnancy per 1,000 Ages 10-17	13.9	11.1	8.2	7	NA
Prenatal Care	84.7%	84.6%	84.0%	85.0%	NA
Child Care Available per 100 Children Under 13	13.3	17.5	16.5	17	NA
Homeownership Rate	71.7% ¹	71.1% ²	NA	NA	NA
% Renters with 30% or More Rental Burden	37.8% ¹	41.7% ²	NA	NA	NA
Clackamas County Services	1999	2000	2001	2002	2003
One Night Shelter Count	224	186	203	209	168
# of New Units Created with OHCS Funding	206	118	501	102	91
OHCS Funding for Subsidized Housing	\$4.5 m	\$5.4 m	\$20.6 m	\$2.0 m	\$3.0 m
# Home Loans for Low-Income Households	62	27	35	34	41
\$ Home Loans for Low-Income Households	\$6.7 m	\$3.1 m	\$4.2 m	\$4.0 m	\$5.3 m
# Households Receiving Energy Assistance	NA	3,899	4,633	4,958	4,860
% of Population Enrolled in the Oregon Health Plan	NA	NA	NA	11.8%	9.2%
# Students Eligible for Free/Reduced Lunch	10,880	11,063	11,650	12,914	14,664
% Students Eligible for Free/Reduced Lunch	20.0%	20.2%	21.0%	23.0%	25.9%
% of Population Receiving Food Stamps	NA	NA	NA	9.0%	7.6%
% of Population Receiving TANF	NA	NA	NA	1.6%	1.2%
% of Population Receiving DHS Services	NA	NA	15.0%	16.2%	13.6%

¹ 1990 Census data, year is 1989
² 2000 Census data, year is 1999
³ 1998
⁴ 1996
NA=Not Available

Endnotes

¹ Oregon Department of Human Services Integrated Client Database.

² Clackamas County Social Services' Community Services Block Grant Work Plan for 2003-05.

³ Please see Methodology and Data References section for information on Census Race/Ethnicity Categories.

⁴ Bureau of Economic Analysis: Regional Economic Accounts.