

Clatsop County

Major findings

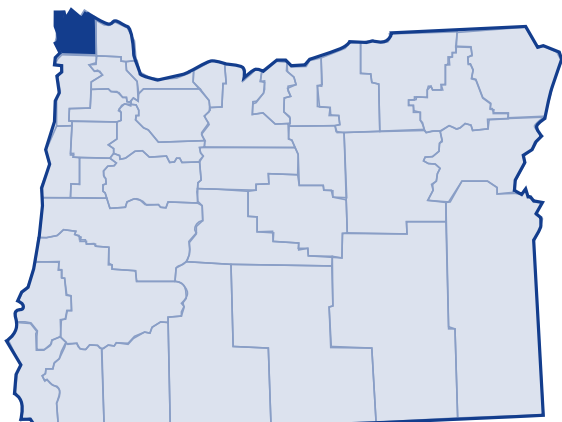
According to the US Census, the poverty rate and the number of those in poverty decreased slightly in Clatsop County from 1989 to 1999. This followed ten years of growing poverty. However, the rate of poverty for Clatsop County remained slightly higher than the state and national averages.

Forty percent of those in poverty in Clatsop County earned 50 percent of the poverty threshold or less for their family type.

Clatsop County's children, families and minorities experienced the highest rates of poverty in 1999. Children 5 years of age and younger experienced the highest rates of poverty of all age groups. Over 20 percent of families who had children younger than 5 lived in poverty. Over half (60.1 percent) of families headed by single mothers with a child 5 years of age or younger lived in poverty.

More than 45 percent of Black, Other, or Hispanic Origin lived in poverty.

In 2003, 22.6 percent of Clatsop County residents received services from the Department of Human Services.¹



Low-income needs

Community Action Team, Inc (CAT), the Community Action Agency for Clatsop County prioritized the needs of the county's low-income population as follows:²

- Develop and implement a Transitional Housing program for homeless youth
- Establish a link between Family Childcare Providers and Food Banks to improve child nutrition
- Maintain five senior center meal programs
- Establish two Family Resource Centers and improve access to services for low-income families
- Increase enrollment in the Even Start Family Literacy program
- Produce and distribute 6,000 Family Resource Directories
- Develop and construct transitional housing for persons released from the Columbia County Corrections Facility
- Complete 15 units of Self Help Housing
- Enroll 600 children in Head Start and prepare them to succeed in school
- Rehabilitate 100 low or moderate income homes
- Weatherize 200 low income homes
- Provide after school child care for 200 children
- Provide emergency energy services to 5,000 low income households

Clatsop County

Growth

According to the 2000 Census, Clatsop County grew by 7 percent from 1989 to 1999. Of those county residents for whom poverty status was determined (35,017), 13.2 percent (4,625 people) lived below the poverty threshold in 1999 as defined by the federal government. This is a decrease of 2.2 percent from the number of those living in poverty (4,727 people) in 1989. The overall percent of Clatsop County's population living in poverty decreased from 1989 to 1999, as well as the number of people living in poverty.

20-year trend

In the 20 years after 1979, the poverty rate in Clatsop County increased from 11.6 percent of the population to 13.2 percent. The number of persons in poverty rose from 3,691 to 4,625 people. Although lower than the national poverty rates in 1979, by 1989, poverty in Clatsop County reached a rate slightly higher than state and national averages.

Poverty and age

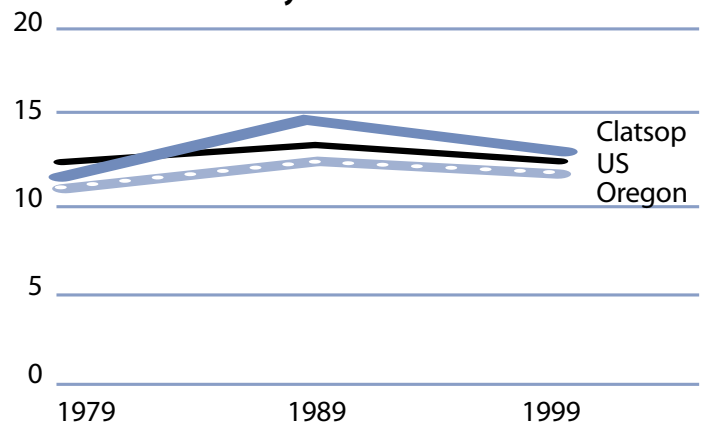
In the 2000 Census, among all age categories examined, Clatsop County children 5 years of age or younger experienced the highest rate of poverty at 23.8 percent. Children under 18 years of age experienced poverty at 18.5 percent. People 65 and over experienced the lowest rate at 8 percent. Over the 20-year period from 1979 to 1999, the rate of poverty improved for people 65 and older.

Poverty in selected communities
Number of persons below poverty level
(poverty rate)

| | 1989 | 1999 | Percent Change |
|------------------|-----------------------|-----------------------|------------------|
| Clatsop County | 4,727 (14.4%) | 4,625 (13.2%) | -2.2% (-1.2%) |
| Oregon Statewide | 344,867 (12.4%) | 388,740 (11.6%) | 12.7% (-0.8%) |
| United States | 31,742,864 (13.1%) | 33,899,812 (12.4%) | 6.8% (-0.7%) |

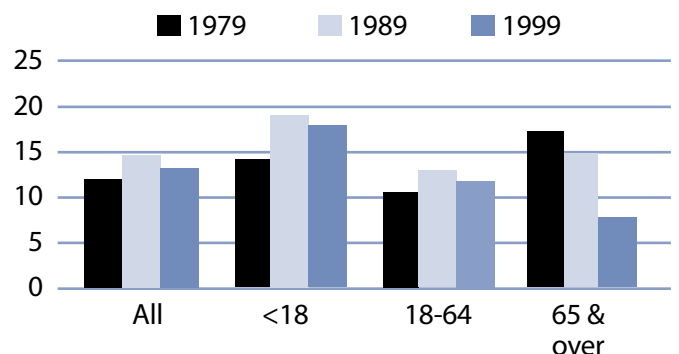
Source: US Census. County numbers have been rounded and, therefore, may not add exactly to totals.

Poverty rates 1979-1999



Source: US Census.

Rate of poverty by age



Source: US Census.

Clatsop County

Poverty and Clatsop County families

In 1999, 869 Clatsop County families lived in poverty (9.1 percent). Of the families in poverty, 64.3 percent (559 families) had a worker and 15.3 percent (133 families) had a full-time year-round worker.

The poverty rate was higher for families with children. Families with at least one child younger than 18 experienced poverty at a rate of 14.6 percent. Families with a child 5 years and younger experienced poverty at a higher rate of 22.8 percent. The rate for families with children headed by single mothers was 41.2 percent and the rate was even higher for single mothers with younger children (less than 5 years) at 60.1 percent.

The poverty rate for married couples with children younger than 18 was lower at 6.2 percent. From 1979 to 1999, the number of female-headed households with children (no husband present) who lived in poverty increased from 286 families in 1979 to 400 families in 1999.

Poverty and race/ethnicity

Among racial/ethnic groups,³ White comprised the majority of people in poverty at 84 percent. The poverty rate among White was 12 percent. Other and Hispanic Origin experienced disproportionately higher rates of poverty. The poverty rate among Other was 47.7 percent, while Hispanic Origin had a 45.4 percent rate. Between 1989 and 1999, White and American Indian experienced improvements in poverty rates.

Clatsop County families in poverty

| Number Below Poverty Level (poverty rate) | 1979 | | | 1989 | | 1999 | | % Change 1979-99 (rate difference) |
|---|-------------|-------------|-------------|------|------|------|------|------------------------------------|
| | 1979 | 1989 | 1999 | 1979 | 1989 | 1979 | 1989 | |
| All Families | 670 (7.8%) | 906 (10.0%) | 869 (9.1%) | | | | | 29.7% (1.3%) |
| With Children under 18 | 482 (11.4%) | 690 (15.4%) | 665 (14.6%) | | | | | 38.0% (3.2%) |
| Female-headed with Children under 18 | 286 (39.5%) | 323 (43.8%) | 400 (41.2%) | | | | | 39.9% (1.7%) |

Source: US Census. County numbers have been rounded and, therefore, may not add exactly to totals.

Clatsop County poverty and race/ethnicity

| Race/Ethnicity | % Total 1999 Population (population) | % Poverty 1999 Population (poverty population) | Poverty Rate by Race 1999 | Poverty Rate by Race 1989 |
|------------------------|--------------------------------------|--|---------------------------|---------------------------|
| White | 92.6% (32,419) | 84.0% (3,885) | 12.0% | 14.1% |
| Black | 0.7% (254) | 2.8% (131) | 51.6% | 33.0% |
| American Indian | 0.8% (297) | 1.2% (55) | 18.5% | 29.9% |
| Asian/Pacific Islander | 1.0%/0.2% (341/68) | 1.1%/0.3% (52/15) | 15.4%/22.1% | 13.8%* |
| Other | 1.8% (620) | 6.4% (296) | 47.7% | 20.8% |
| 2 or More Races | 2.9% (1,018) | 4.1% (191) | 18.8% | NA |
| Hispanic Origin | 4.6% (1,618) | 15.9% (734) | 45.4% | 29.0% |

* Asian and Pacific Islander were not separate categories in the 1990 Census.

Clatsop County

County income

On a per capita basis, Clatsop County's personal income was \$25,196 in 2002, about 88 percent of the state average of \$28,792, and 82 percent of the national average, \$30,906. Per capita income in Clatsop County rose 2.9 percent between 2001 and 2002. The 10-year trend, from 1992 to 2002, for per capita income shows average annual growth of 3.4 percent. Average earnings per job for 2001 were \$26,414 in Clatsop County compared to \$33,063 for the state.⁴

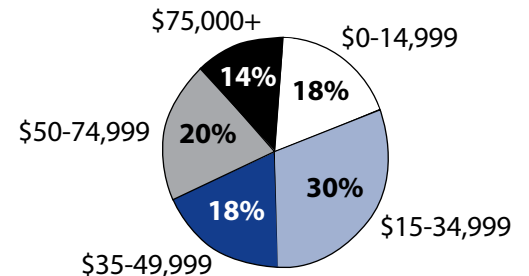
Poverty thresholds

Segmenting census data by income reveals more detail about the people experiencing poverty in Clatsop County. The 2000 Census showed that 1,871 people or 40.5 percent of those living below the federal poverty threshold actually earned 50 percent or less of the poverty threshold. Other segments of the population earned equal to or above the poverty level but still needed assistance. In Oregon, 185 percent of the poverty level is the income guideline used for federal food programs such as food stamps, child nutrition, and the Women, Infants, and Children program. In 1999, 10,427 people in Clatsop County, or 29.8 percent earned below 185 percent of the poverty threshold.

Public assistance

Participation in public assistance programs serves as an indirect measure—or indicator—of the extent of poverty and the measures taken to serve the public. According to the 2000 Census, 525 households or 3.6 percent of all households in Clatsop County reported public assistance income. The average amount of public assistance income for 1999 was \$2,000. The 20-year trend showed a decrease in the number of households that reported receiving public assistance income, from 850 households or 6.7 percent of all households in 1979.

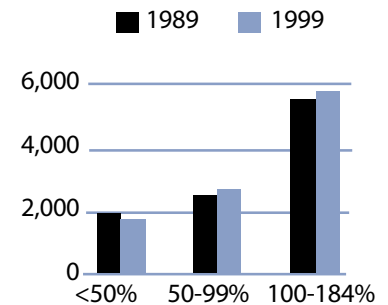
1999 household income distribution—Clatsop County



Source: US Census.

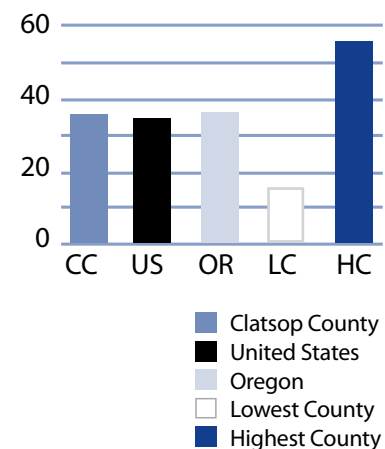
Note: The median household income in Clatsop County was \$36,301 in 1999 compared to \$25,135 in 1989 (44.4 percent increase).

Number of persons in poverty Threshold percentiles



Source: US Census.

Public assistance in Oregon Rate per thousand population



Source: US Census.

Clatsop County

Basic family budget

According to US Department of Agriculture statistics released in October 1999, about 12.6 percent of Oregon households had difficulty meeting their basic need for food. This chart outlines typical expenses for four family types in Clatsop County and the corresponding income those families would need to meet their expenses.

Using this budget, one adult who earned Clatsop County's median family income could not afford basic family expenses.

To learn more about this basic family budget, see Methodology and Data References section.

What the poverty threshold buys

Families with incomes at the poverty level in Clatsop County could afford 40 to 42.1 percent of this basic family budget.

Wages

According to the Oregon Employment Department, the average weekly wage in Clatsop County was \$467.45. "Non-classifiable" had the highest weekly average of \$770.82 and retail trade had the lowest weekly average of \$298.33.

This chart illustrates a family's ability to be self-sufficient based on earnings of average wages for Clatsop County. The two-worker scenario relies on both workers earning average wages. Families with one adult who worked full-time and earned average wages in Clatsop County could not afford the basic family budget.

Clatsop County's basic family budget

| Basic Family Budget/Monthly | 1 Adult/ 1 Child | 1 Adult/ 3 Children | 2 Adults/ 1 Child | 2 Adults/ 3 Children |
|---|---------------------|------------------------|----------------------|-------------------------|
| Housing | \$556 | \$758 | \$556 | \$758 |
| Food | \$230 | \$489 | \$388 | \$647 |
| Child Care | \$404 | \$880 | \$404 | \$880 |
| Transportation | \$197 | \$197 | \$277 | \$277 |
| Health Care | \$245 | \$245 | \$293 | \$293 |
| Other Necessities | \$244 | \$387 | \$293 | \$436 |
| Taxes | \$399 | \$579 | \$467 | \$673 |
| Basic Family Budget Needed/Monthly | \$2,275 | \$3,535 | \$2,678 | \$3,964 |
| Basic Family Budget Total/Annual | \$27,294 | \$42,421 | \$32,142 | \$47,567 |
| Median Family Income (Census 2000) | \$21,367 | \$21,367 | \$51,906 | \$51,906 |
| Median Family Income as % of Basic Budget | 78.3% | 50.4% | 161.5% | 109.1% |

Poverty and Clatsop County's basic family budget

| Basic Family Budget/Monthly | 1 Adult/ 1 Child | 1 Adult/ 3 Children | 2 Adults/ 1 Child | 2 Adults/ 3 Children |
|-----------------------------|---------------------|------------------------|----------------------|-------------------------|
| Poverty Threshold | \$11,483 | \$16,954 | \$13,410 | \$19,882 |
| % of Basic Budget | 42.1% | 40.0% | 41.7% | 41.8% |

Clatsop County wages and the basic budget

| | 1 Worker | 1 Worker | 2 Workers | 2 Workers |
|-------------------------------|---------------------|------------------------|----------------------|-------------------------|
| Average Monthly Wage (AMW)* | \$2,010 | \$2,010 | \$4,020 | \$4,020 |
| | 1 Adult/ 1 Child | 1 Adult/ 3 Children | 2 Adults/ 1 Child | 2 Adults/ 3 Children |
| Self Sufficiency Wage (SSW)** | \$2,275 | \$3,535 | \$2,678 | \$3,964 |
| Difference (SSW-AMW) | -\$265 | -\$1,525 | \$1,342 | \$56 |
| Wage as % of Self Sufficiency | 88.4% | 56.9% | 150.1% | 101.4% |

* Source: 1999 Oregon Covered Employment and Payrolls.
** Based on Basic Family Budget for Clatsop County.

Clatsop County

| Clatsop County Poverty Measures | 1995 | 2000 | 2001 | 2002 | 2003 |
|--|-----------------------|-----------------------|-----------|---------|-----------|
| Population | 33,301 ¹ | 35,630 ² | 35,574 | 35,654 | 35,820 |
| % of People Living Below Poverty Level | 14.4% ¹ | 13.2% ² | NA | NA | NA |
| Median Income | \$25,135 ¹ | \$36,301 ² | NA | NA | NA |
| Unemployment Rate | 5.00% | 4.6% | 5.2% | 6.5% | 7.1% |
| 8th Grade Drug Use | 22.4% ³ | 12.8% | NA | 28.2% | NA |
| HS Dropout | 5.2% ⁴ | 3.9% | 3.6% | 3.5% | NA |
| Teen Pregnancy per 1,000 Ages 10-17 | 21.7 | 13 | 12 | 12.4 | NA |
| Prenatal Care | 79.0% | 82.8% | 82.1% | 78.9% | NA |
| Child Care Available per 100 Children Under 13 | 19.7 | 21.3 | 19.8 | 17.3 | NA |
| Homeownership Rate | 63.2% ¹ | 64.2% ² | NA | NA | NA |
| % Renters with 30% or More Rental Burden | 42.3% ¹ | 47.6% ² | NA | NA | NA |
| Clatsop County Services | 1999 | 2000 | 2001 | 2002 | 2003 |
| One Night Shelter Count | 72 | 56 | 145 | 177 | 70 |
| # of New Units Created with OHCS Funding | 209 | 59 | 104 | 107 | 108 |
| OHCS Funding for Subsidized Housing | \$2.9 m | \$1.4 m | \$2.7 m | \$2.3 m | \$4.0 m |
| # Home Loans for Low-Income Households | 3 | 9 | 9 | 13 | 2 |
| \$ Home Loans for Low-Income Households | \$338,756 | \$806,504 | \$880,082 | \$1.3 m | \$232,254 |
| # Households Receiving Energy Assistance | NA | 914 | 849 | 806 | 617 |
| % of Population Enrolled in the Oregon Health Plan | NA | NA | NA | 19.7% | 14.8% |
| # Students Eligible for Free/Reduced Lunch | 1,648 | 1,584 | 1,787 | 1,921 | 1,996 |
| % Students Eligible for Free/Reduced Lunch | 29.5% | 28.5% | 31.4% | 34.1% | 36.2% |
| % of Population Receiving Food Stamps | NA | NA | NA | 15.2% | 12.2% |
| % of Population Receiving TANF | NA | NA | NA | 2.3% | 1.8% |
| % of Population Receiving DHS Services | NA | NA | 27.8% | 28.0% | 22.6% |

¹ 1990 Census data, year is 1989
² 2000 Census data, year is 1999
³ 1998
⁴ 1996
 NA=Not Available

Endnotes

¹ Oregon Department of Human Services Integrated Client Database.

² Community Action Team, Inc.'s Community Services Block Grant Work Plan for 2003-05.

³ Please see Methodology and Data References section for information on Census Race/Ethnicity Categories.

⁴ Bureau of Economic Analysis: Regional Economic Accounts.