

# Crook County

## Major findings

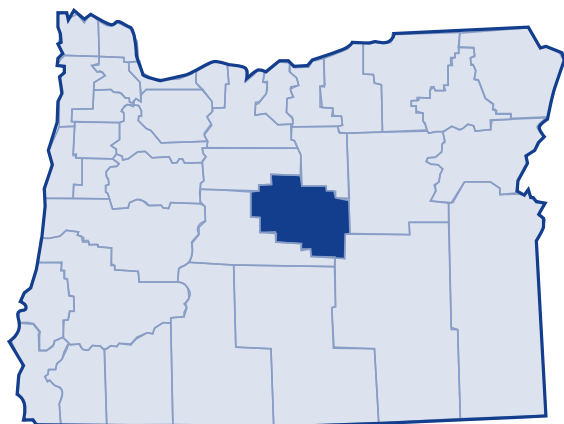
Crook County saw population growth of 38.9 percent from 1989 to 1999. This growth in total population exceeded the growth in the number of people in poverty; the number of people living in poverty increased 38.5 percent, but the poverty rate decreased 0.2 percent.

From 1979 to 1989, Crook County experienced poverty rates at much lower levels than the state and the nation. From 1989 to 1999, however, Crook County saw poverty rates remain relatively constant, even as the state and national averages decreased. By 1999, Crook County's poverty rate matched state and national averages.

Newcomers to poverty were likely to be families with children. Between 1979 and 1999, the number of Crook County families with children living in poverty increased 68.3 percent.

The 2000 Census showed families with children headed by single mothers to be especially vulnerable to poverty at 36.6 percent. More than half of families headed by single mothers who had children under 5 years of age, 59.4 percent, lived in poverty.

In 2003, 23.8 percent of Crook County residents received services from the Department of Human Services.<sup>1</sup>



## Low-income needs

Central Oregon Community Action Agency Network prioritized the needs of the low-income population in Crook County as follows:<sup>2</sup>

- **Housing**—help paying deposits and first/last months' rent; help addressing housing barriers such as credit problems, past criminal activities, or previous evictions
- **Utilities**—access to utility assistance, especially when rental units are energy inefficient
- **Transportation**—affordable and accessible transportation, including medical transportation; improve the dial-a-ride system and public transportation
- **Employment**—full-time employment with benefits
- **Hunger/Food Stamps**—food pantries, brown bag program, free and reduced lunch, summer feeding programs and especially rural food-assistance programs face particular challenges
- **Health Care**—access to health insurance, health care, prescription medications, and dental care
- **Childcare**—affordable quality childcare
- **Education**—job training and financial assistance for low-income parents seeking to achieve educational goals

# Crook County

## Growth

According to the 2000 Census, Crook County grew 35.9 percent between 1989 and 1999. The Census Bureau determined the poverty status of 18,851 county residents and found that 11.3 percent (2,128 people) lived below the poverty threshold. This was an increase of 38.5 percent in the number of persons living in poverty (1,537 people) in 1989. The overall percent of Crook County's population living in poverty remained relatively constant from 1989 to 1999, but the number of people living in poverty increased.

## 20-year trend

In the 20 years after 1979, the poverty rate in Crook County increased from 10 percent of the population to 11.3 percent. The number of persons in poverty rose from 1,286 people to 2,128 people. Crook County's poverty rates remained lower than the state and national poverty rates throughout this period.

## Poverty and age

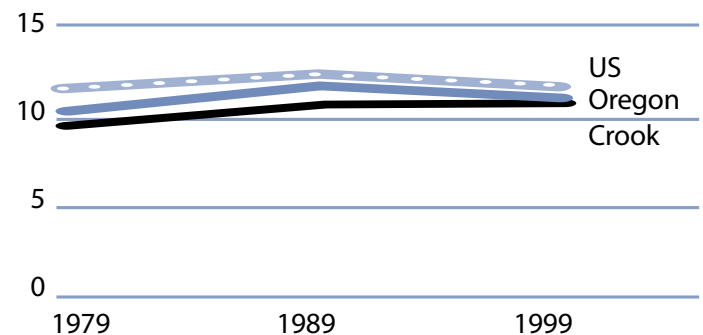
In the 2000 Census, among all age categories examined, children 5 years of age and younger experienced the highest rate of poverty at 18.4 percent. Children younger than 18 years of age experienced poverty at 14.7 percent. People 65 and older experienced the lowest rate at 8.1 percent. Over the 20-year period from 1979 to 1999, the rate of poverty decreased for those 65 years of age and older and increased for all other age categories.

**Poverty in selected communities**  
Number of persons below poverty level  
(poverty rate)

	1989	1999	Percent Change (rate difference)
Crook County	1,537 (11.1%)	2,128 (11.3%)	38.5% (0.2%)
Oregon Statewide	344,867 (12.4%)	388,740 (11.6%)	12.7% (-0.8%)
United States	31,742,864 (13.1%)	33,899,812 (12.4%)	6.8% (-0.7%)

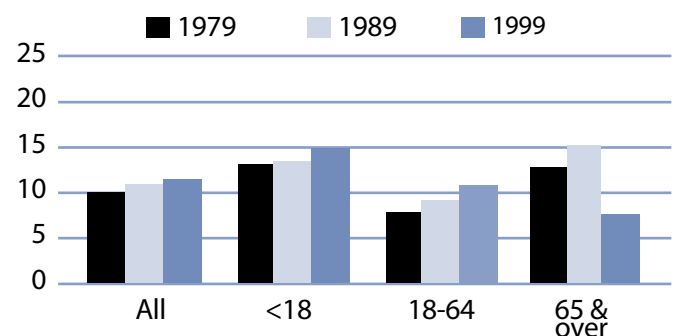
Source: US Census. County numbers have been rounded and, therefore, may not add exactly to totals.

**Poverty rates 1979-1999**



Source: US Census.

**Rate of poverty by age**



Source: US Census.

# Crook County

## Poverty and Crook County families

In 1999, 439 Crook County families lived in poverty (8.1 percent). Of the families in poverty, 67 percent (294 families) had a worker and 23.9 percent (105 families) had a full-time year-round worker.

The poverty rate was higher for families with children. Families with at least one child younger than 18 experienced poverty at a rate of 14.4 percent. Families with a child 5 years and younger experienced poverty at a higher rate of 19.7 percent. The rate for families with children headed by single mothers was 36.6 percent and the rate was even higher with younger children (younger than 5 years) at 59.4 percent.

The poverty rate for married couples with children younger than 18 was lower at 8.9 percent.

The number of families with children in poverty increased from 218 families in 1979 to 367 families in 1999.

## Poverty and race/ethnicity

Among racial/ethnic groups,<sup>3</sup> White residents comprised the majority of people in poverty at 81 percent. When examining poverty based on race/ethnicity, however, the poverty rate among White was 9.9 percent. American Indian, Other and Hispanic Origin experienced disproportionately higher rates of poverty. All three of these categories experienced poverty rates in excess of 30 percent. From 1989 to 1999, Hispanic Origin poverty increased.

## Crook County families in poverty

Number Below Poverty Level (poverty rate)				% Change
	1979	1989	1999	1979-99 (rate difference)
All Families	306 (8.0%)	380 (9.3%)	439 (8.1%)	43.5% (0.1%)
With Children under 18	218 (11.4%)	219 (11.2%)	367 (14.4%)	68.3% (3.0%)
Female-headed with Children under 18	131 (49.2%)	124 (51.0%)	159 (36.6%)	21.4% (-12.6%)

Source: US Census. County numbers have been rounded and, therefore, may not add exactly to totals.

## Crook County poverty and race/ethnicity

Race/Ethnicity	% Total 1999 Population (population)	% Poverty 1999 Population (poverty population)	Poverty Rate by Race 1999	Poverty Rate by Race 1989
White	92.5% (17,439)	81.0% (1,723)	9.9%	10.2%
Black	0.0% (7)	0.0% (0)	0.0%	0.0%
American Indian	1.7% (322)	4.9% (104)	32.3%	36.9%
Asian/Pacific Islander	0.3%/0.0% (53/0)	0.0%/0.0% (0/0)	NA/NA	NA*
Other	4.0% (761)	12.1% (257)	33.9%	46.0%
2 or More Races	1.4% (269)	2.1% (44)	16.4%	NA
Hispanic Origin	5.5% (1,032)	18.0% (382)	37.0%	25.1%

\* Asian and Pacific Islander were not separate categories in the 1990 Census.

# Crook County

## County income

On a per capita basis, Crook County's personal income was \$21,859 in 2002, about 76 percent of the state average of \$28,792, and 71 percent of the national average, \$30,906. Per capita income in Crook County rose 2.3 percent between 2001 and 2002. The 10-year trend, from 1992 to 2002, of per capita income shows average annual growth of 3 percent. Average earnings per job for 2001 were \$27,596 in Crook County compared to \$33,063 for the state.<sup>4</sup>

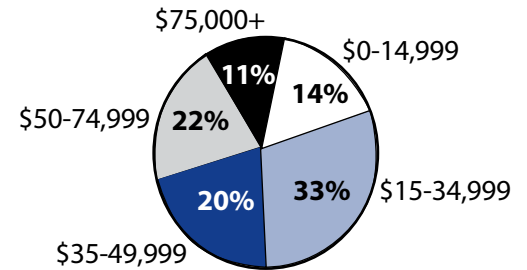
## Poverty thresholds

Segmenting census data by income reveals more detail about the people experiencing poverty in Crook County. The 2000 Census showed that 1,047 people or 49.2 percent of those living below the federal poverty threshold actually earned 50 percent or less of the poverty threshold. Other segments of the population earned equal to or above the poverty level but still need assistance. In Oregon, 185 percent of the poverty level is the income guideline used for federal food programs such as food stamps, child nutrition, and the Women, Infants, and Children program. In 1999, 33 percent of Crook County's population, or 6,218 people earned below 185 percent of the poverty threshold.

## Public assistance

Participation in public assistance programs serves as an indirect measure—or indicator—of the extent of poverty and the measures taken to serve the public. According to the 2000 Census, 335 households or 4.6 percent of all households in Crook County reported public assistance income. The average amount of public assistance income for 1999 was \$3,303. The 20-year trend showed an increase in the number of households receiving public assistance (236 in 1979), but a decrease in the overall percent of the population receiving public assistance (4.8 percent in 1979).

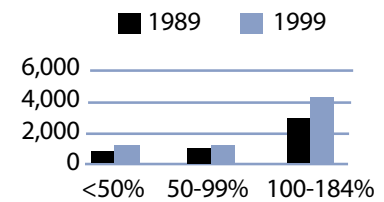
**1999 household income distribution—Crook County**



Source: US Census.

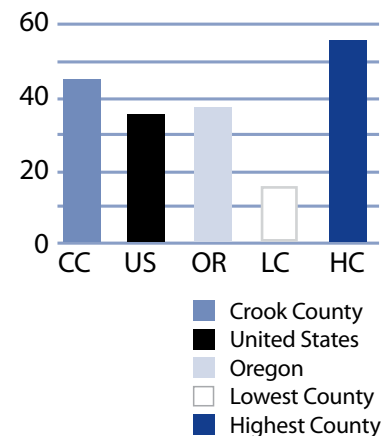
Note: The median household income in Crook County was \$35,186 in 1999 compared to \$24,275 in 1989 (44.9 percent increase).

**Number of persons in poverty Threshold percentiles**



Source: US Census.

**Public assistance in Oregon Rate per thousand population**



Source: US Census.

# Crook County

## Basic family budget

According to US Department of Agriculture statistics released in October 1999, about 12.6 percent of Oregonian households have difficulty meeting their basic need for food. This chart outlines typical expenses for four family types in Crook County and the corresponding income those families would need to meet their expenses.

Families with one adult who earned Crook County's median family income could not afford this basic family budget. Those with two earners fare better.

*To learn more about this basic family budget, see Methodology and Data References section.*

## What the poverty threshold buys

Families at the poverty level in Crook County could afford 44 to 48.2 percent of this basic family budget.

## Wages

According to the Oregon Employment Department, the average weekly wage in Crook County was \$503.55. The federal government had the highest weekly average of \$759.81 and the agriculture, forestry and fish had the lowest weekly average of \$272.64.

This chart illustrates a family's ability to be self-sufficient based on earnings of average wages for Crook County. The two-worker scenario relies on both workers earning average wages as well.

An adult with three children who worked full-time at Benton County's average wage could not afford this basic family budget.

**Crook County's basic family budget**

Basic Family Budget/Monthly	1 Adult/ 1 Child	1 Adult/ 3 Children	2 Adults/ 1 Child	2 Adults/ 3 Children
Housing	\$477	\$657	\$477	\$657
Food	\$230	\$489	\$388	\$647
Child Care	\$352	\$803	\$352	\$789
Transportation	\$197	\$197	\$277	\$277
Health Care	\$245	\$245	\$293	\$293
Other Necessities	\$219	\$355	\$268	\$404
Taxes	\$266	\$482	\$401	\$552
<b>Basic Family Budget Needed/Monthly</b>	<b>\$1,986</b>	<b>\$3,214</b>	<b>\$2,456</b>	<b>\$3,619</b>
Basic Family Budget Total/Annual	\$23,830	\$38,574	\$29,468	\$43,433
Median Family Income (Census 2000)	\$19,888	\$19,888	\$43,877	\$43,877
Median Family Income as % of Basic Budget	83.5%	51.6%	148.9%	101.0%

**Poverty and Crook County's basic family budget**

Basic Family Budget/Monthly	1 Adult/ 1 Child	1 Adult/ 3 Children	2 Adults/ 1 Child	2 Adults/ 3 Children
Poverty Threshold	\$11,483	\$16,954	\$13,410	\$19,882
% of Basic Budget	48.2%	44.0%	45.5%	45.8%

**Crook County wages and the basic budget**

	1 Worker 1 Adult/ 1 Child	1 Worker 1 Adult/ 3 Children	2 Workers 2 Adults/ 1 Child	2 Workers 2 Adults/ 3 Children
Average Monthly Wage (AMW)*	\$2,165	\$2,165	\$4,331	\$4,331
Self Sufficiency Wage (SSW)**	\$1,986	\$3,214	\$2,456	\$3,619
Difference (SSW-AMW)	\$179	-\$1,049	\$3,047	\$712
Wage as % of Self Sufficiency	109.0%	67.4%	176.3%	119.7%

\* Source: 1999 Oregon Covered Employment and Payrolls.  
\*\* Based on Basic Family Budget for Crook County.

# Crook County

<b>Crook County Poverty Measures</b>					
	1995	2000	2001	2002	2003
Population	14,111 <sup>1</sup>	19,182 <sup>2</sup>	19,918	20,172	20,600
% of People Living Below Poverty Level	11.1% <sup>1</sup>	11.3% <sup>2</sup>	NA	NA	NA
Median Income	\$24,275 <sup>1</sup>	\$35,186 <sup>2</sup>	NA	NA	NA
Unemployment Rate	7.8%	8.4%	9.7%	10.3%	10.8%
8th Grade Drug Use	13.5% <sup>3</sup>	17.0%	NA	8.6%	NA
HS Dropout	3.0% <sup>4</sup>	1.3%	2.9%	5.2%	NA
Teen Pregnancy per 1,000 Ages 10-17	17.9	11.4	5.9	7.8	NA
Prenatal Care	71.0%	86.4%	88.8%	89.3%	NA
Child Care Available per 100 Children Under 13	14.8	11.4	11.8	10	NA
Homeownership Rate	71.4% <sup>1</sup>	74.3% <sup>2</sup>	NA	NA	NA
% Renters with 30% or More Rental Burden	34.1% <sup>1</sup>	39.6% <sup>2</sup>	NA	NA	NA
<b>Crook County Services</b>					
	1999	2000	2001	2002	2003
One Night Shelter Count	46	19	69	38	66
# of New Units Created with OHCS Funding	40	0	40	0	0
OHCS Funding for Subsidized Housing	\$1.2 m	\$0	\$1.6 m	\$400,000	\$0
# Home Loans for Low-Income Households	14	12	5	5	5
\$ Home Loans for Low-Income Households	\$923,938	\$854,366	\$370,721	\$437,534	\$435,616
# Households Receiving Energy Assistance	NA	602	515	654	596
% of Population Enrolled in the Oregon Health Plan	NA	NA	NA	19.80%	15.1%
# Students Eligible for Free/Reduced Lunch	1,272	1,342	1,345	1,444	1,504
% Students Eligible for Free/Reduced Lunch	39.7%	42.0%	42.6%	46.1%	46.9%
% of Population Receiving Food Stamps	NA	NA	NA	18%	15.2%
% of Population Receiving TANF	NA	NA	NA	2.6%	1.7%
% of Population Receiving DHS Services	NA	NA	28.3%	28.7%	23.8%

<sup>1</sup> 1990 Census data, year is 1989  
<sup>2</sup> 2000 Census data, year is 1999  
<sup>3</sup> 1998  
<sup>4</sup> 1996  
 NA=Not Available

## Endnotes

<sup>1</sup> Oregon Department of Human Services Integrated Client Database.

<sup>2</sup> Central Oregon Community Action Agency Network's Community Services Block Grant Work Plan for 2003-05.

<sup>3</sup> Please see Methodology and Data References section for information on Census Race/Ethnicity Categories.

<sup>4</sup> Bureau of Economic Analysis: Regional Economic Accounts.