

Deschutes County

Major findings

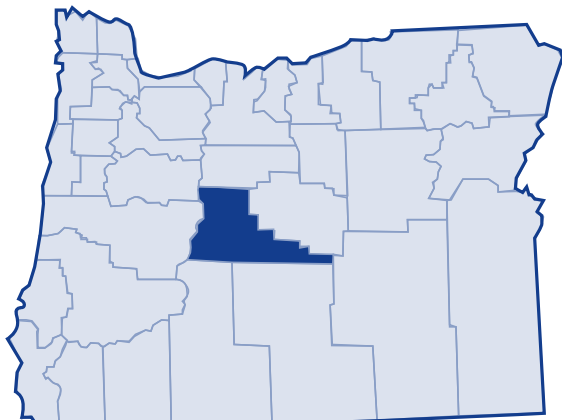
Deschutes County's poverty rates were lower than the state and national average from 1979 to 1999.

Of those who were poor in Deschutes County, 37.8 percent earned 50 percent or less of the federal poverty threshold. The number of families in poverty headed by single mothers increased 134.2 percent between 1979 and 1999. Deschutes County residents who indicated they were Black, American Indian or Other on the census form had poverty rates above 20 percent in 1999.

County residents living in poverty could afford 38.8 to 41 percent of the basic family budget.

Although over 70 percent of the county's population owned their own home in 1999, over a quarter of homeowners spent 30 percent or more of their income on homeownership costs. Renters fared less well, with 45 percent renters spending 30 percent or more of their income on rental costs.

In 2003, 19.7 percent of Deschutes County residents received services from the Department of Human Services.¹



Low-income needs

Central Oregon Community Action Agency Network) prioritized the needs of the low-income population in Deschutes County as follows:²

- **Housing**—help paying deposits and first/last months' rent; help addressing housing barriers such as credit problems, past criminal activities, or previous evictions
- **Utilities**—access to utility assistance, especially when rental units are energy inefficient
- **Transportation**—affordable and accessible transportation, including medical transportation; improve the dial-a-ride system and public transportation
- **Employment**—full-time employment with benefits
- **Hunger/Food Stamps**—food pantries, brown bag program, free and reduced lunch, summer feeding programs and especially rural food-assistance programs face particular challenges
- **Health Care**—access to health insurance, health care, prescription medications, and dental care
- **Childcare**—affordable quality childcare
- **Education**—job training and financial assistance for low-income parents seeking to achieve educational goals

Deschutes County

Growth

According to the 2000 Census, Deschutes County grew 53.9 percent between 1989 and 1999. The Census Bureau determined the poverty status of 114,226 county residents and found that 9.3 percent (10,613 people) lived below the poverty threshold. This is an increase of 31 percent in the number of persons living in poverty (8,100 people) in 1989. The overall percent of Deschutes County's population living in poverty decreased from 1989 to 1999, but the number of people living in poverty did not.

20-year trend

In the 20 years after 1979, the poverty rate in Deschutes County remained relatively constant at 9.3 percent of the population. The number of persons in poverty nearly doubled from 5,729 people to 10,613 people. Deschutes County's poverty rates remained lower than the state and national poverty rates throughout this period.

Poverty and age

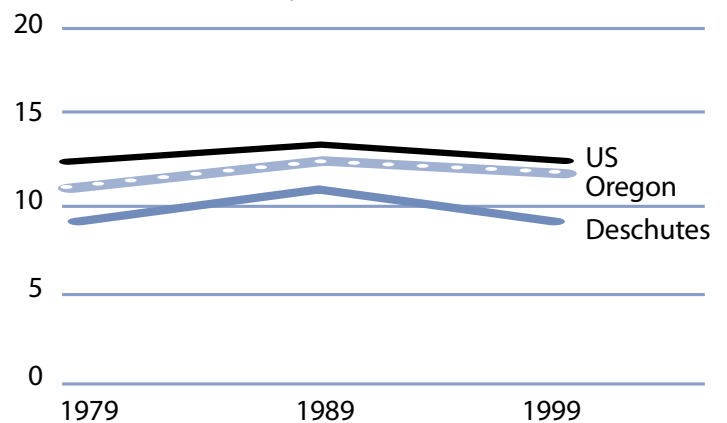
In the 2000 Census, among all age categories examined, children 5 years of age or younger experienced the highest rate of poverty at 11.7 percent. Children younger than 18 years of age experienced poverty at 11.1 percent. People 65 and older experienced the lowest rate at 6.1 percent. Over the 20-year period from 1979 to 1999, the rate of poverty improved for those 65 years of age and older.

Poverty in selected communities
Number of persons below poverty level
(poverty rate)

	1989	1999	Percent Change
Deschutes County	8,100 (10.9%)	10,613 (9.3%)	31.0% (rate difference) (-1.6%)
Oregon Statewide	344,867 (12.4%)	388,740 (11.6%)	12.7% (-0.8%)
United States	31,742,864 (13.1%)	33,899,812 (12.4%)	6.8% (-0.7%)

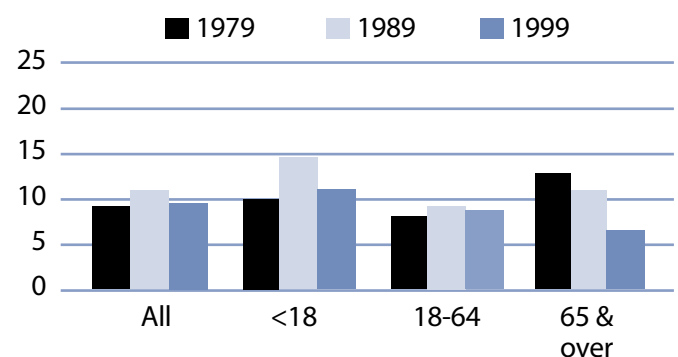
Source: US Census. County numbers have been rounded and, therefore, may not add exactly to totals.

Poverty rates 1979-1999



Source: US Census.

Rate of poverty by age



Source: US Census.

Deschutes County

Poverty and Deschutes County families

In 1999, 2,046 Deschutes County families lived in poverty (6.3 percent). Of the families in poverty, 64.5 percent (1,319 families) had a worker and 18.9 percent (386 families) had a full-time year-round worker.

The poverty rate was higher for families with children. Families with at least one child younger than 18 experienced poverty at a rate of 9.3 percent. Families with a child 5 years and younger experienced poverty at a higher rate of 11.5 percent. The rate for families with children headed by single mothers was 28.8 percent and was even higher with younger children (less than 5 years) at 42.9 percent.

The poverty rate for married couples with children younger than 18 was lower at 4.4 percent. The number of female-headed households with children (no husband present) who lived in poverty increased from 351 families in 1979 to 822 families in 1999.

Poverty and race/ethnicity

Among racial/ethnic groups,³ White residents comprised the majority of people in poverty at 90.1 percent. When examining poverty based on race/ethnicity, however, the poverty rate among White was 8.8 percent. Black, American Indian and Other experienced disproportionately higher rates of poverty. The poverty rate among Black was 42.5 percent. American Indian and Other had poverty rates above 20 percent.

Deschutes County families in poverty

Number Below Poverty Level (poverty rate)	1979	1989	1999	% Change 1979-99
	(rate difference)			
All Families	1,342 (7.7%)	1,746 (8.2%)	2,046 (6.3%)	52.5% (-1.4%)
With Children under 18	833 (8.8%)	1,206 (11.8%)	1,451 (9.3%)	74.2% (0.4%)
Female-headed with Children under 18	351 (29.0%)	594 (37.5%)	822 (28.8%)	134.2% (-0.2%)

Source: US Census. County numbers have been rounded and, therefore, may not add exactly to totals.

Deschutes County poverty and race/ethnicity

Race/Ethnicity	% Total 1999 Population (population)	% Poverty 1999 Population (poverty population)	Poverty Rate by Race 1999	Poverty Rate by Race 1989
White	94.8% (108,289)	90.1% (9,563)	8.8%	10.9%
Black	0.2% (266)	1.1% (113)	42.5%	22.2%
American Indian	0.8% (961)	2.3% (249)	25.9%	17.4%
Asian/Pacific Islander	0.5%/0.1% (615/87)	0.6%/0.0% (60/0)	9.8/0.0%*	3.6%*
Other	1.5% (1,739)	3.9% (414)	23.8%	13.7%
2 or More Races	2.0% (2,269)	2.0% (214)	9.4%	NA
Hispanic Origin	3.8% (4,335)	8.0% (846)	19.5%	9.2%

* Asian and Pacific Islander were not separate categories in the 1990 Census.

Deschutes County

From 1989 to 1999, only White experienced improvements in poverty rates.

County income

On a per capita basis, Deschutes County's personal income was \$28,193 in 2002, about 98 percent of the state average of \$28,792, and 91 percent of the national average, \$30,906. Per capita income in Deschutes County rose 1.1 percent between 2001 and 2002. The 10-year trend, from 1992 to 2002, of per capita income shows average annual growth of 3.7 percent. Average earnings per job for 2001 were \$27,859 in Deschutes County compared to \$33,063 for the state.⁴

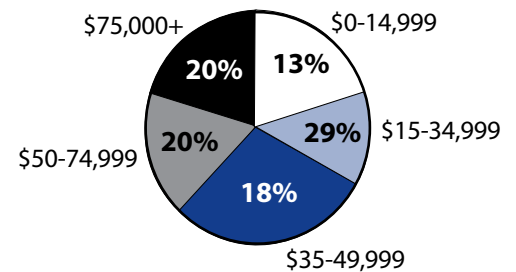
Poverty thresholds

Segmenting census data by income reveals more detail about the people experiencing poverty in Deschutes County. The 2000 Census showed that 4,009 people or 37.8 percent of those living below the federal poverty threshold actually earned 50 percent or less income of the poverty threshold. Other segments of the population earned equal to or more than poverty level but still needed assistance. In Oregon, 185 percent of the poverty level is the income guideline used for federal food programs such as food stamps, child nutrition, and the Women, Infants, and Children program. In 1999, 21.8 percent of Deschutes County's population, or 24,875 people earned below 185 percent of the poverty threshold.

Public assistance

Participation in public assistance programs serves as an indirect measure—or indicator—of the extent of poverty and the measures taken to serve the public. According to the 2000 Census, 1,286 households or 2.8 percent of all households in Deschutes County reported public assistance income. The average amount of public assistance income for 1999 was \$2,301. The 20-year trend showed an increase in the number of households that received public assistance income (1,143 households in 1979), but a decrease in the percent of all households (5.0 percent in 1979).

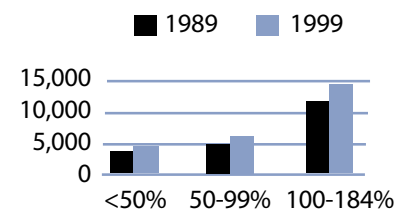
1999 household income distribution—Deschutes County



Source: US Census.

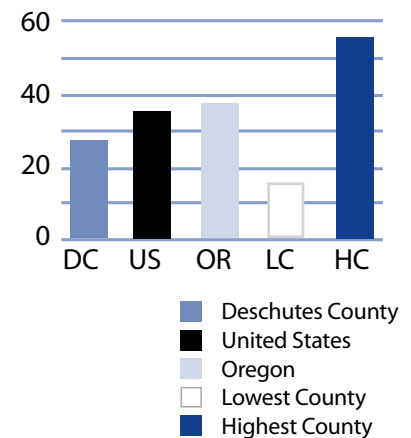
Note: The median household income in Deschutes County was \$41,847 in 1999 compared to \$27,317 in 1989 (53.2 percent increase).

Number of persons in poverty Threshold percentiles



Source: US Census.

Public assistance in Oregon Rate per thousand population



Source: US Census.

Deschutes County

Basic family budget

According to US Department of Agriculture statistics released in October 1999, about 12.6 percent of Oregonian households had difficulty meeting their basic need for food. This chart outlines typical expenses for four family types in Deschutes County and the corresponding income those families would need to meet their expenses.

Families with one working adult who earned Deschutes County's median income could not afford the basic budget.

To learn more about this basic family budget, see Methodology and Data References section.

What the poverty threshold buys

Families at the poverty level in Deschutes County could afford 38.8 to 41 percent of this basic family budget.

Wages

According to the Oregon Employment Department, the average weekly wage in Deschutes County was \$491.20. The federal government had the highest weekly average of \$787.08 and retail trade had the lowest weekly average of \$320.88.

This chart illustrates a family's ability to be self-sufficient based on earnings of average wages for Deschutes County. The two-worker scenario relies on both workers earning average wages.

Using the basic family budget, families with one working adult who earned Deschutes County's average wages could not afford the basic budget.

Deschutes County's basic family budget

Basic Family Budget/Monthly	1 Adult/ 1 Child	1 Adult/ 3 Children	2 Adults/ 1 Child	2 Adults/ 3 Children
Housing	\$590	\$822	\$590	\$822
Food	\$230	\$489	\$388	\$647
Child Care	\$401	\$871	\$401	\$871
Transportation	\$197	\$197	\$277	\$277
Health Care	\$245	\$245	\$293	\$293
Other Necessities	\$254	\$406	\$303	\$455
Taxes	\$416	\$611	\$484	\$705
Basic Family Budget Needed/Monthly	\$2,333	\$3,641	\$2,736	\$4,070
Basic Family Budget Total/Annual	\$27,999	\$43,694	\$32,833	\$48,838
Median Family Income (Census 2000)	\$22,252	\$22,252	\$54,945	\$54,945
Median Family Income as % of Basic Budget	79.5%	50.9%	167.3%	112.5%

Poverty and Deschutes County's basic budget

Basic Family Budget/Monthly	1 Adult/ 1 Child	1 Adult/ 3 Children	2 Adults/ 1 Child	2 Adults/ 3 Children
Poverty Threshold	\$11,483	\$16,954	\$13,410	\$19,882
% of Basic Budget	41.0%	38.8%	40.8%	40.7%

Deschutes County wages and the basic budget

	1 Worker 1 Child	1 Worker 3 Children	2 Workers 1 Child	2 Workers 3 Children
Average Monthly Wage (AMW)*	\$2,112	\$2,112	\$4,224	\$4,224
Self Sufficiency Wage (SSW)**	\$2,333	\$3,641	\$2,736	\$4,070
Difference (SSW-AMW)	-\$221	-\$1,529	\$1,488	\$154
Wage as % of Self Sufficiency	90.5%	58.0%	154.4%	103.8%

* Source: 1999 Oregon Covered Employment and Payrolls.
** Based on Basic Family Budget for Deschutes County.

Deschutes County

Deschutes County Poverty Measures	1995	2000	2001	2002	2003
Population	74,958 ¹	115,367 ²	120,750	125,566	129,492
% of People Living Below Poverty Level	10.9% ¹	9.3% ²	NA	NA	NA
Median Income	\$27,317 ¹	\$41,847 ²	NA	NA	NA
Unemployment Rate	6.5%	5.3%	6.4%	7.7%	7.7%
8th Grade Drug Use	18.3% ³	13.3%	NA	17.3%	NA
HS Dropout	5.6% ⁴	6.3%	4.3%	3.0%	NA
Teen Pregnancy per 1,000 Ages 10-17	16.5	10.7	11.7	8.8	NA
Prenatal Care	82.4%	88.3%	89.7%	91.5%	NA
Child Care Available per 100 Children Under 13	24.8	16.9	15.2	16	NA
Homeownership Rate	71.0% ¹	72.3% ²	NA	NA	NA
% Renters with 30% or More Rental Burden	41.6% ¹	45.7% ²	NA	NA	
Deschutes County Services	1999	2000	2001	2002	2003
One Night Shelter Count	292	288	307	189	330
# of New Units Created with OHCS Funding	14	56	43	14	106
OHCS Funding for Subsidized Housing	\$1.7 m	\$1.4 m	\$2.4 m	\$1.7 m	\$427,042
# Home Loans for Low-Income Households	25	19	13	20	32
\$ Home Loans for Low-Income Households	\$1.6m	\$1.3 m	\$1.2 m	\$2.3 m	\$4.0 m
# Households Receiving Energy Assistance	NA	2,683	2,213	2,518	2,485
% of Population Enrolled in the Oregon Health Plan	NA	NA	NA	19.3%	12.1%
# Students Eligible for Free/Reduced Lunch	5,482	5,834	6,773	6,892	7,541
% Students Eligible for Free/Reduced Lunch	28.0%	29.4%	33.0%	33.0%	35.30%
% of Population Receiving Food Stamps	NA	NA	NA	14.0%	12.6%
% of Population Receiving TANF	NA	NA	NA	1.6%	1.0%
% of Population Receiving DHS Services	NA	NA	21.5%	22.1%	19.7%

¹ 1990 Census data, year is 1989
² 2000 Census data, year is 1999
³ 1998
⁴ 1996
 NA=Not Available

Endnotes

¹ Oregon Department of Human Services Integrated Client Database.

² Central Oregon Community Action Agency Network Community Services Block Grant Work Plan for 2003-05.

³ Please see Methodology and Data References section for information on Census Race/Ethnicity Categories.

⁴ Bureau of Economic Analysis: Regional Economic Accounts.