

# Josephine County

## Major findings

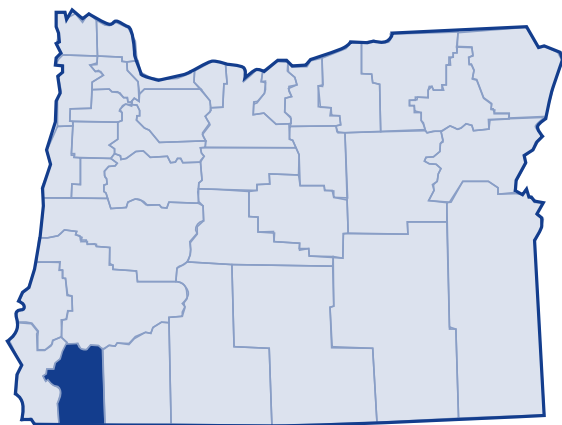
Poverty in Josephine County decreased between 1979 and 1999. However, poverty in Josephine County remains higher than the state average and national average, even after experiencing 20 years of falling poverty rates.

Although minority races saw improvements in poverty rates from 1989 to 1999, some groups continue to have high numbers living in poverty. One quarter of American Indian, Other, and those of two or more races lived in poverty in 1999.

Josephine County's children experienced the highest rates of poverty. Families with children who lived in poverty increased by 135.7 percent between 1979 and 1999.

According to the 2000 Census, half of the population spent 30 percent or more of their income on rent.

In 2003, 31.2 percent of Josephine County residents received services from the Department of Human Services.<sup>1</sup>



## Low-income needs

Josephine County Community Services prioritized the needs of the low-income population in Josephine County as follows:<sup>2</sup>

- **Housing**—Increase and continue collaboration among agencies and partners to address needs and gaps identified by the community to ensure a cohesive, uniform approach to low-income housing challenges.
- **Medical**—Support partners in their efforts to address prohibitive prescription costs, medication management, access to primary care physicians, dental services, medical transportation and reduced costs from pharmacy vendors
- **Living Wage Jobs**—Support community partners in their efforts and provide direct service to address critical unmet needs in this category, including: education and training, social service programs, local barriers and restrictions, transportation and child care.
- **Transportation**—Increase services and continue collaboration with community partners to provide non-medical/social, medical and public transportation.
- **Food**—Maintain and expand existing food resources to provide fresh, perishable and shelf-stable food to hungry families.
- **Children's Advocates**
- **Alcohol and drug abuse treatment**
- **Senior programs**
- **Energy assistance**

# Josephine County

## Growth

According to the 2000 Census, Josephine County grew 20.9 percent between 1989 and 1999. The US Census Bureau determined the poverty status of 74,613 county residents and found that 15 percent (11,193 people) lived below the poverty threshold. This is a slight decrease (0.6 percent) in the number of persons living in poverty (11,261 people) in 1989. The overall percent of Josephine County's population living in poverty decreased from 1989 to 1999, as well as the number of people living in poverty.

## 20-year trend

In the 20 years after 1979, the poverty rate in Josephine County, dropped from 15.6 percent of the population to 15 percent. The number of persons in poverty rose from 9,073 people to 11,193 people. Josephine County's poverty rates remained higher than the state and national poverty rates throughout this period.

## Poverty and age

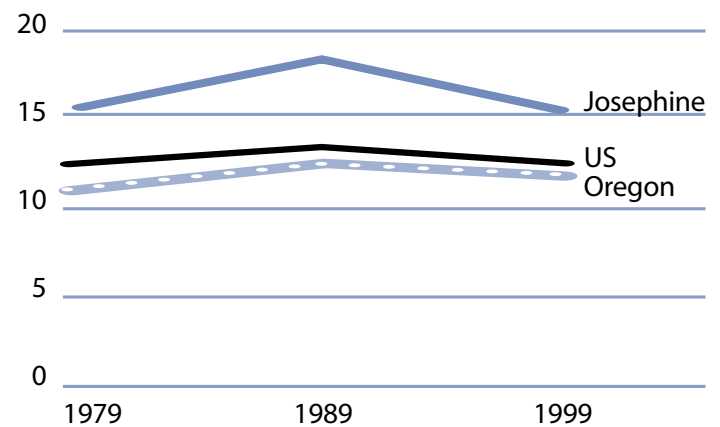
In the 2000 Census, among all age categories examined, children 5 years of age and younger experienced the highest rate of poverty at 27.5 percent. Children younger than 18 years of age experienced poverty at 21.8 percent. People 65 and older experienced the lowest rate at 6.8 percent. Over the 20-year period from 1979 to 1999, the rate of poverty was consistently highest for children younger than 18.

**Poverty in selected communities**  
Number of persons below poverty level  
(poverty rate)

	1989	1999	Percent Change
Josephine County	11,261 (18.3%)	11,193 (15.0%)	-0.6% (-3.3%)
Oregon Statewide	344,867 (12.4%)	388,740 (11.6%)	12.7% (-0.8%)
United States	31,742,864 (13.1%)	33,899,812 (12.4%)	6.8% (-0.7%)

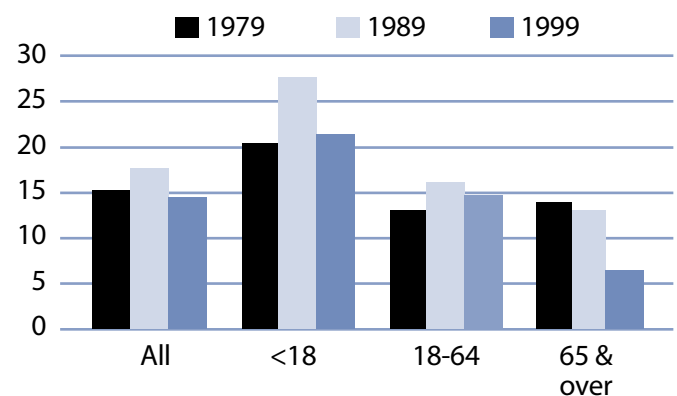
Source: US Census. County numbers have been rounded and, therefore, may not add exactly to totals.

**Poverty rates 1979-1999**



Source: US Census.

**Rate of poverty by age**



Source: US Census.

# Josephine County

## Poverty and Josephine County families

In 1999, 2,435 Josephine County families lived in poverty (11.3 percent). Of the families in poverty, 51.5 percent (1,253 families) had a worker and 11.5 percent (280 families) had a full-time year-round worker.

The poverty rate was higher for families with children. Families with at least one child younger than 18 experienced poverty at a rate of 19.7 percent. Families with a child 5 years and younger experienced poverty at a higher rate of 27.1 percent. The rate for families with children headed by single mothers was 45.4 percent and was even higher with younger children (less than 5 years) at 69.9 percent.

The poverty rate for married couples with children younger than 18 was lower at 11.5 percent. From 1979 to 1999, the number of Josephine County families with a child younger than 18 who lived in poverty increased from 1,454 families in 1979 to 1,791 families in 1999.

## Poverty and race/ethnicity

Among racial/ethnic groups,<sup>3</sup> White residents comprised the majority of people in poverty at 89.7 percent. When examining poverty based on race/ethnicity, however, the poverty rate among White was 14.3 percent. American Indian, Hispanic Origin and Other experienced disproportionately higher rates of poverty. The poverty rate among these racial and ethnic categories was above 24 percent. From 1989 to 1999, all racial and ethnic categories experienced improvements in poverty rates.

## Josephine County families in poverty

Number Below Poverty Level (poverty rate)				% Change
	1979	1989	1999	1979-99 (rate difference)
All Families	2,130 (12.6%)	2,483 (13.8%)	2,435 (11.3%)	14.3% (-1.3%)
With Children under 18	1,454 (17.7%)	1,733 (22.0%)	1,791 (19.7%)	135.7% (2.0%)
Female-headed with Children under 18	679 (50.3%)	905 (51.8%)	970 (45.4%)	42.9% (-4.9%)

Source: US Census. County numbers have been rounded and, therefore, may not add exactly to totals.

## Josephine County poverty and race/ethnicity

Race/Ethnicity	% Total 1999 Population (population)	% Poverty 1999 Population (poverty population)	Poverty Rate by Race 1999	Poverty Rate by Race 1989
White	93.8% (69,986)	89.7% (10,042)	14.3%	17.8%
Black	0.2% (119)	0.1% (15)	12.6%	15.1%
American Indian	1.3% (977)	2.2% (249)	25.5%	29.5%
Asian/Pacific Islander	0.5%/0.0% (392/32)	0.4%/0.0% (53/4)	13.5%/12.5%	26.3%*
Other	1.3% (7,881)	2.3% (2,027)	26.6%	46.5%
2 or More Races	2.9% (2,136)	5.1% (572)	26.8%	NA
Hispanic Origin	4.2% (3,162)	6.9% (767)	24.3%	36.5%

\* Asian and Pacific Islander were not separate categories in the 1990 Census.

# Josephine County

## County income

On a per capita basis, Josephine County's personal income was \$22,791 in 2002, about 79 percent of the state average of \$28,792, and 74 percent of the national average, \$30,906. Per capita income in Josephine County rose 2.5 percent between 2001 and 2002. The 10-year trend, from 1992 to 2002, in per capita income shows average annual growth of 3.9 percent. Average earnings per job for 2001 were \$24,810 in Josephine County compared to \$33,063 for the state.<sup>4</sup>

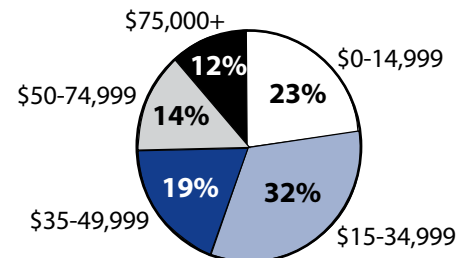
## Poverty thresholds

Segmenting census data by income reveals more detail about the people experiencing poverty in Josephine County. The 2000 Census showed that 5,160 people or 46.1 percent of those living below the federal poverty threshold actually earned 50 percent or less of the poverty threshold. Other segments of the population earned equal to or above the poverty level but still needed assistance. In Oregon, 185 percent of the poverty level is the income guideline used for federal food programs such as food stamps, child nutrition, and the Women, Infants, and Children program. In 1999, 36.6 percent of Josephine County's population, or 27,299 people earned below 185 percent of the poverty threshold.

## Public assistance

Participation in public assistance programs serves as an indirect measure—or indicator—of the extent of poverty and the measures taken to serve the public. According to the 2000 Census, 1,622 households or 5.2 percent of all households in Josephine County reported public assistance income. The average amount of public assistance income for 1999 was \$2,459. The 20-year trend showed a decrease in households that reported receiving public assistance income, from 2,043 households or 9.3 percent of all households in 1979.

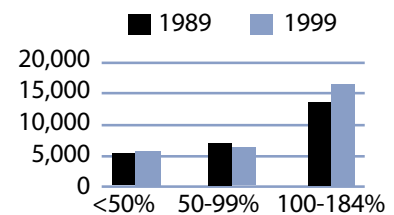
**1999 household income distribution—Josephine County**



Source: US Census.

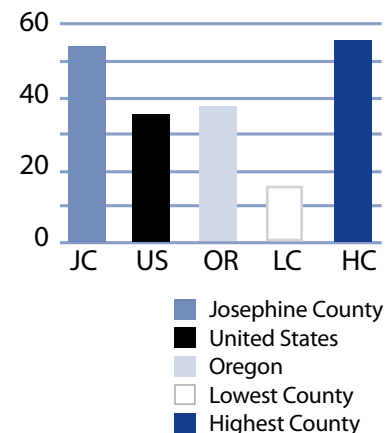
Note: The median household income in Josephine County was \$31,229 in 1999 compared to \$20,936 in 1989 (49.2 percent increase).

**Number of persons in poverty Threshold percentiles**



Source: US Census.

**Public assistance in Oregon Rate per thousand population**



Source: US Census.

## Basic family budget

According to US Department of Agriculture statistics released in October 1999, about 12.6 percent of Oregon households had difficulty meeting their basic need for food. This chart outlines typical expenses for four family types in Josephine County and the corresponding income those families would need to meet their expenses.

Among the family types profiled, only families with two working adults and one child could afford the basic budget at Josephine County's family median income.

*To learn more about this basic family budget, see Methodology and Data References section.*

## What the poverty threshold buys

Families living at the poverty level in Josephine County could afford 42.5 to 45.9 percent of this basic family budget.

## Wages

According to the Oregon Employment Department, the average weekly wage in Josephine County is \$445.30. The federal government had the highest weekly average of \$723.55 and the retail trade industry had the lowest weekly average of \$311.64.

This chart illustrates a family's ability to be self-sufficient based on earnings of average wages for Josephine County. The two-worker scenario relies on both workers earning average wages.

Families with one adult who earned average wages in Josephine County could not afford the basic budget.

Josephine County's basic family budget

Basic Family Budget/Monthly	1 Adult/ 1 Child	1 Adult/ 3 Children	2 Adults/ 1 Child	2 Adults/ 3 Children
Housing	\$485	\$657	\$485	\$657
Food	\$230	\$489	\$388	\$647
Child Care	\$392	\$865	\$392	\$865
Transportation	\$197	\$197	\$277	\$277
Health Care	\$245	\$245	\$293	\$293
Other Necessities	\$222	\$355	\$271	\$404
Taxes	\$312	\$515	\$422	\$585
<b>Basic Family Budget Needed/Monthly</b>	<b>\$2,083</b>	<b>\$3,323</b>	<b>\$2,528</b>	<b>\$3,728</b>
Basic Family Budget Total/Annual	\$24,993	\$39,880	\$30,337	\$44,738
Median Family Income (Census 2000)	\$17,665	\$17,665	\$41,572	\$41,572
Median Family Income as % of Basic Budget	70.7%	44.3%	137.0%	92.9%

Poverty and Josephine County's basic family budget

Basic Family Budget/Monthly	1 Adult/ 1 Child	1 Adult/ 3 Children	2 Adults/ 1 Child	2 Adults/ 3 Children
Poverty Threshold	\$11,483	\$16,954	\$13,410	\$19,882
% of Basic Budget	45.9%	42.5%	44.2%	44.4%

Josephine County wages and the basic budget

	1 Worker	1 Worker	2 Workers	2 Workers
Average Monthly Wage (AMW)*	\$1,915	\$1,915	\$3,830	\$3,830
	1 Adult/ 1 Child	1 Adult/ 3 Children	2 Adults/ 1 Child	2 Adults/ 3 Children
Self Sufficiency Wage (SSW)**	\$2,083	\$3,323	\$2,528	\$3,728
Difference (SSW-AMW)	-\$168	-\$1,408	\$1,302	\$102
Wage as % of Self Sufficiency	91.9%	57.6%	151.5%	102.7%

\* Source: 1999 Oregon Covered Employment and Payrolls.  
\*\* Based on Basic Family Budget for Josephine County.

# Josephine County

Josephine County Poverty Measures	1995	2000	2001	2002	2003
Population	62,649 <sup>1</sup>	75,726 <sup>2</sup>	76,526	77,820	79,030
% of People Living Below Poverty Level	18.3% <sup>1</sup>	15.0% <sup>2</sup>	NA	NA	NA
Median Income	\$20,936 <sup>1</sup>	\$31,229 <sup>2</sup>	NA	NA	NA
Unemployment Rate	8.4	6.9	8.5	8.6	8.8
8th Grade Drug Use	21.0% <sup>3</sup>	12.4%	NA	19.2%	NA
HS Dropout	7.7% <sup>4</sup>	5.1%	5.1%	5.1%	NA
Teen Pregnancy per 1,000 Ages 10-17	15.9	11.9	10.8	7.4	NA
Prenatal Care	72.4%	78.7%	78.9%	87.5%	NA
Child Care Available per 100 Children Under 13	18.8	16.5	13.4	13	NA
Homeownership Rate	70.4% <sup>1</sup>	70.1% <sup>2</sup>	NA	NA	NA
% Renters with 30% or More Rental Burden	52.0% <sup>1</sup>	50.6% <sup>2</sup>	NA	NA	NA
Josephine County Services	1999	2000	2001	2002	2003
One Night Shelter Count	180	63	335	235	197
# of New Units Created with OHCS Funding	0	3	43	0	0
OHCS Funding for Subsidized Housing	\$0	\$180,889	\$1.6 m	\$0	\$0
# Home Loans for Low-Income Households	55	31	29	40	36
\$ Home Loans for Low-Income Households	\$4.6 m	\$2.6 m	\$2.6 m	\$3.9 m	\$4.4 m
# Households Receiving Energy Assistance	NA	3,259	2,708	3,123	2,658
% of Population Enrolled in the Oregon Health Plan	NA	NA	NA	25.6%	21.5%
# Students Eligible for Free/Reduced Lunch	5,976	5,688	6,047	6,067	6,067
% Students Eligible for Free/Reduced Lunch	51.8%	49.4%	52.4%	52.0%	52.2%
% of Population Receiving Food Stamps	NA	NA	NA	22.0%	20.5%
% of Population Receiving TANF	NA	NA	NA	4.3%	3.7%
% of Population Receiving DHS Services	NA	NA	33.6%	32.9%	31.2%

<sup>1</sup> 1990 Census data, year is 1989

<sup>2</sup> 2000 Census data, year is 1999

<sup>3</sup> 1998

<sup>4</sup> 1996

NA=Not Available

## Endnotes

<sup>1</sup> Oregon Department of Human Services Integrated Client Database.

<sup>2</sup> Josephine County Community Services Community Services Block Grant Work Plan for 2003-05.

<sup>3</sup> Please see Methodology and Data References section for information on Census Race/Ethnicity Categories.

<sup>4</sup> Bureau of Economic Analysis: Regional Economic Accounts.