

Tillamook County

Major findings

According to the US Census, the poverty rate and the number of those in poverty decreased in Tillamook County between 1989 and 1999. The 1999 poverty rate equaled the state and national average.

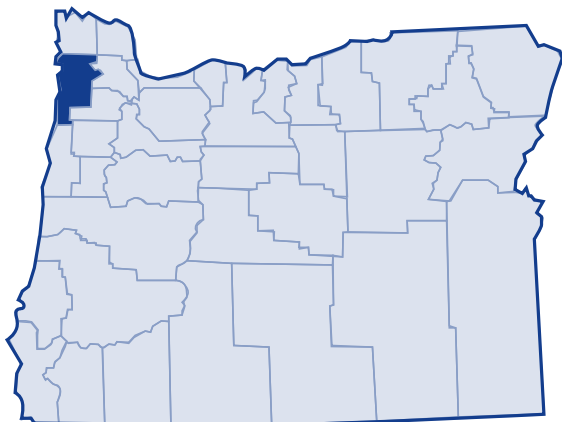
Of Tillamook County residents living in poverty, 43 percent earned 50 percent or less of the poverty threshold.

Minorities experienced high rates of poverty in Tillamook County, with Black at 77.1 percent. Other and Hispanic Origin both had poverty rates greater than 32 percent.

Families with one adult working full time and either earning median income or average wages for Tillamook County could not afford the basic family budget. Single mothers faced a high risk of poverty: 31 percent for all single mothers, and 49.1 percent if she had a child under 5 years of age.

Unemployment rates increased from 4.4 in 2000 to 9.5 in 2003.

In 2003, 21.8 percent of Tillamook County residents received services from the Department of Human Services.¹



Low-income needs

Community Action Team, Inc., the Community Action Agency for Tillamook County prioritized the needs of the county's low-income population as follows:²

- Develop and implement a transitional housing program for homeless youth
- Establish a link between Family Childcare Providers and Food Banks to improve child nutrition
- Maintain five senior center meal programs
- Establish two family resource centers and improve access to services for low-income families
- Increase enrollment in the Even Start Family Literacy program
- Produce and distribute 6,000 Family Resource Directories
- Develop and construct transitional housing for persons released from the Columbia County Corrections Facility
- Complete 15 units of Self Help Housing
- Enroll 600 children in Head Start and prepare them to succeed in school
- Rehabilitate 100 low or moderate income homes
- Weatherize 200 low income homes
- Provide after school child care for 200 children
- Provide emergency energy services to 5,000 low income households

Tillamook County

Growth

According to the 2000 Census, Tillamook County grew 12.5 percent between 1989 and 1999. The US Census Bureau determined the poverty status of 23,794 county residents and found that 11.4 percent (2,718 people) lived below the poverty threshold. This is a decrease of 14.2 percent in the number of persons living in poverty (3,168 people) in 1989. The overall percent of Tillamook County's population living in poverty decreased from 1989 to 1999, as did the number of people in poverty.

20-year trend

In the 20 years after 1979, the poverty rate in Tillamook County increased from 10.1 percent of the population to 11.4 percent. The number of persons in poverty rose from 2,103 people to 2,178 people. Tillamook County's poverty rates equaled state and national poverty rates with the exception of 1989 when the county's rates were higher.

Poverty and age

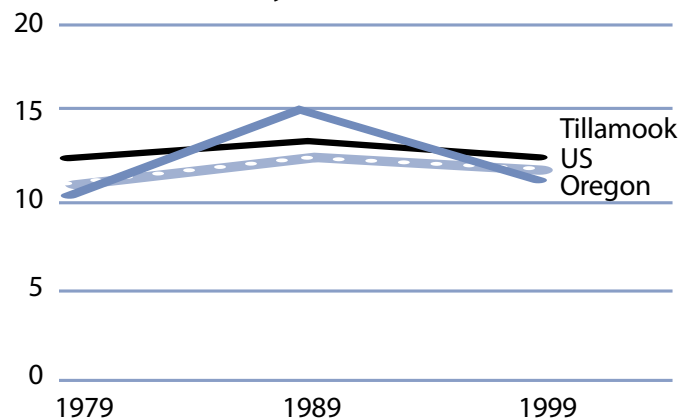
In the 2000 Census, among all age categories examined, children 5 years of age and younger experienced the highest rate of poverty at 20.6 percent. Children younger than 18 years of age experienced poverty at 15.2 percent. People 65 and older experienced the lowest rate: 8.1 percent. Over the 20-year period from 1979 to 1999, the rate of poverty was consistently highest for children younger than 18.

Poverty in selected communities
Number of persons below poverty level
(poverty rate)

	1989	1999	Percent Change
Tillamook County	3,168 (115.0%)	2,718 (11.4%)	-14.2% (rate difference) (-3.6%)
Oregon Statewide	344,867 (12.4%)	388,740 (11.6%)	12.7% (-0.8%)
United States	31,742,864 (13.1%)	33,899,812 (12.4%)	6.8% (-0.7%)

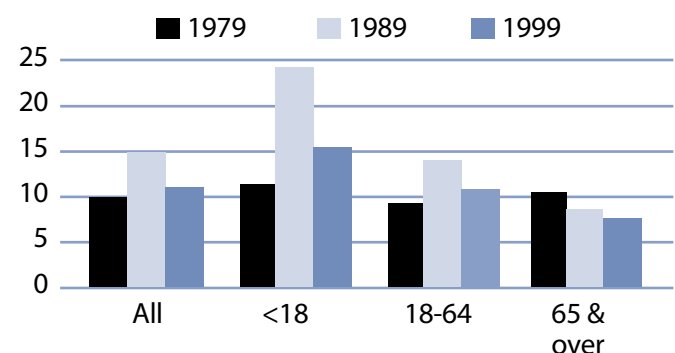
Source: US Census. County numbers have been rounded and, therefore, may not add exactly to totals.

Poverty rates 1979-1999



Source: US Census.

Rate of poverty by age



Source: US Census.

Tillamook County

Poverty and Tillamook County families

In 1999, 553 Tillamook County families lived in poverty (8.1 percent). Of the 553 families in poverty, 65.8 percent (364 families) had a worker and 19.5 percent (108 families) had a full-time year-round worker.

The poverty rate was higher for families with children. Families with at least one child under 18 experienced poverty at a rate of 14.1 percent. Families with a child 5 years and younger experienced poverty at a higher rate of 20.9 percent. The rate for families with children headed by single mothers was 30.5 percent and was even higher with younger children (less than 5 years) at 49.1 percent.

The poverty rate for married couples with children under 18 was lower at 10.9 percent. From 1979 to 1999, the number of families with children who lived in poverty increased from 462 families in 1979 to 553 families in 1999.

Poverty and race/ethnicity

Among racial/ethnic groups,³ White residents comprised the majority of people in poverty at 89.1 percent. When examining poverty based on race/ethnicity, however, the poverty rate among White was 10.8 percent. Black, Other and Hispanic Origin experienced disproportionately higher rates of poverty. For Black, the poverty rate was 77.1 percent. Poverty exceeded 32 percent for Other and Hispanic Origin. Poverty rates improved for White and American Indian between 1989 and 1999.

Tillamook County families in poverty

Number Below Poverty Level (poverty rate)				% Change
	1979	1989	1999	1979-99 (rate difference)
All Families	462 (7.6%)	698 (11.4%)	553 (8.1%)	19.7% (0.5%)
With Children under 18	323 (11.5%)	514 (20.3%)	384 (14.1%)	18.9% (2.6%)
Female-headed with Children under 18	154 (42.9%)	291 (57.7%)	151 (30.5%)	-1.9% (-12.4%)

Source: US Census. County numbers have been rounded and, therefore, may not add exactly to totals.

Tillamook County poverty and race/ethnicity

Race/Ethnicity	% Total 1999 Population (population)	% Poverty 1999 Population (poverty population)	Poverty Rate by Race 1999	Poverty Rate by Race 1989
White	94.4% (22,467)	89.1% (2,422)	10.8%	14.8%
Black	0.1% (35)	1.0% (27)	77.1%	72.1%
American Indian	0.4% (107)	0.5% (14)	13.1%	22.8%
Asian/Pacific Islander	0.5%/0.1% (122/27)	0.7%/0.0% (20/0)	16.4%/NA	0.0%*
Other	1.7% (408)	4.9% (132)	32.4%	21.2%
2 or More Races	2.6% (628)	3.8% (103)	16.4%	NA
Hispanic Origin	5.1% (1,203)	17.2% (468)	38.9%	22.3%

* Asian and Pacific Islander were not separate categories in the 1990 Census.

Tillamook County

County income

On a per capita basis, Tillamook County's personal income was \$25,734 in 2002, about 89 percent of the state average of \$28,792, and 83 percent of the national average, \$30,906. Per capita income in Tillamook County rose 3.8 percent between 2001 and 2002. The 10-year trend, from 1992 to 2002, in per capita income shows average annual growth of 4.9 percent. Average earnings per job for 2001 were \$25,162 in Tillamook County compared to \$33,063 for the state.⁴

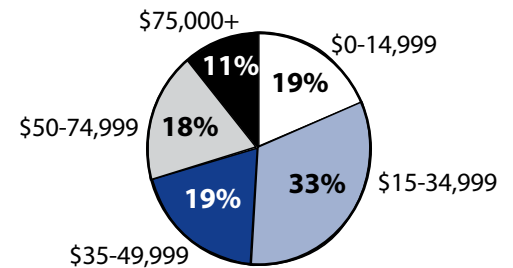
Poverty thresholds

Segmenting census data by income reveals more detail about the people experiencing poverty in Tillamook County. The 2000 Census showed that 1,163 people or 42.8 percent of those living below the federal poverty threshold earned 50 percent or less of the poverty threshold. Other segments of the population earned equal to or above the poverty level but still needed assistance. In Oregon, 185 percent of the poverty level is the income guideline used for federal food programs such as food stamps, child nutrition, and the Women, Infants, and Children program. In 1999, 31.4 percent of Tillamook County's population, or 7,461 people earned below 185 percent of the poverty threshold.

Public assistance

Participation in public assistance programs serves as an indirect measure—or indicator—of the extent of poverty and the measures taken to serve the public. According to the 2000 Census, 328 households or 3.2 percent of all households in Tillamook County reported public assistance income. The average amount of public assistance income for 1999 was \$2,323. The 20-year trend showed a decrease in households that reported receiving public assistance income, from 487 households or 5.8 percent of all households in 1979.

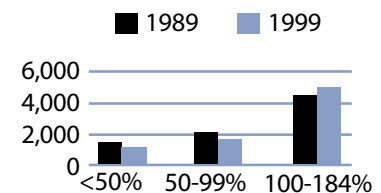
1999 household income distribution—Tillamook County



Source: US Census.

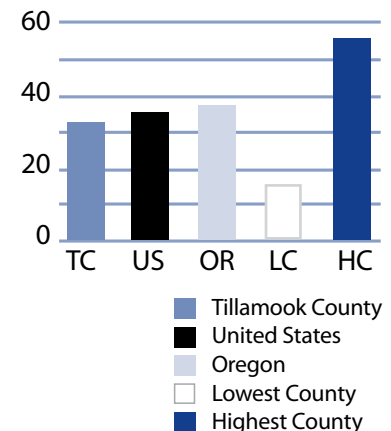
Note: The median household income in Tillamook County was \$34,269 in 1999 compared to \$21,965 in 1989 (56.0 percent increase).

Number of persons in poverty Threshold percentiles



Source: US Census.

Public assistance in Oregon Rate per thousand population



Source: US Census.

Tillamook County

Basic family budget

According to US Department of Agriculture statistics released in October 1999, about 12.6 percent of Oregon households had difficulty meeting their basic need for food. This chart outlines typical expenses for four family types in Tillamook County and the corresponding income those families would need to meet their expenses.

Families with one adult earning Tillamook County's median income could not afford the basic family budget.

To learn more about this basic family budget, see Methodology and Data References section.

What the poverty threshold buys

Families at the poverty level in Tillamook County could afford 42.9 to 46.6 percent of this basic family budget.

Wages

According to the Oregon Employment Department, the average weekly wage in Tillamook County is \$437.47. The federal government had the highest weekly average of \$668.38 and non-classifiable had the lowest weekly average of \$206.22.

This chart illustrates a family's ability to be self-sufficient based on earnings of average wages for Tillamook County. The two-worker scenario relies on both workers earning average wages.

Families with one adult who works full-time at Tillamook County's average wage cannot afford the basic family budget.

Tillamook County's basic family budget

Basic Family Budget/Monthly	1 Adult/ 1 Child	1 Adult/ 3 Children	2 Adults/ 1 Child	2 Adults/ 3 Children
Housing	\$477	\$657	\$477	\$657
Food	\$230	\$489	\$388	\$647
Child Care	\$388	\$842	\$388	\$842
Transportation	\$197	\$197	\$277	\$277
Health Care	\$245	\$245	\$293	\$293
Other Necessities	\$219	\$355	\$268	\$404
Taxes	\$298	\$505	\$416	\$575
Basic Family Budget Needed/Monthly	\$2,054	\$3,290	\$2,507	\$3,695
Basic Family Budget Total/Annual	\$24,648	\$39,477	\$30,082	\$44,345
Median Annual Income (Census 2000)	\$22,507	\$22,507	\$46,010	\$46,010
Median Family Income as % of Basic Budget	91.3%	57.0%	152.9%	103.8%

Poverty and Tillamook County's basic budget

Basic Family Budget/Monthly	1 Adult/ 1 Child	1 Adult/ 3 Children	2 Adults/ 1 Child	2 Adults/ 3 Children
Poverty Threshold	\$11,483	\$16,954	\$13,410	\$19,882
% of Basic Budget	46.6%	42.9%	44.6%	44.8%

Tillamook County wages and the basic budget

	1 Worker	1 Worker	2 Workers	2 Workers
Average Monthly Wage (AMW)*	\$1,881	\$1,881	\$3,762	\$3,762
	1 Adult/ 1 Child	1 Adult/ 3 Children	2 Adults/ 1 Child	2 Adults/ 3 Children
Self Sufficiency Wage (SSW)**	\$2,054	\$3,290	\$2,507	\$3,695
Difference (SSW-AMW)	-\$173	-\$1,409	\$1,255	\$67
Wage as % of Self Sufficiency	91.6%	57.1%	150.1%	101.8%

* Source: 1999 Oregon Covered Employment and Payrolls.
** Based on Basic Family Budget for Tillamook County.

Tillamook County

Tillamook County Poverty Measures	1995	2000	2001	2002	2003
Population	21,570 ¹	24,262 ²	24,447	24,494	24,590
% of People Living Below Poverty Level	15.0% ¹	11.4% ²	NA	NA	NA
Median Income	\$21,965 ¹	\$34,269 ²	NA	NA	NA
Unemployment Rate	5.0	4.4	5.5	6	9.5
8th Grade Drug Use	23.1% ³	19.3%	NA	9.4%	NA
HS Dropout	5.9% ⁴	3.7%	3.8%	4.6%	NA
Teen Pregnancy per 1,000 Ages 10-17	15.7	7.8	8.5	14.4	NA
Prenatal Care	81.8%	87.1%	86.5%	86.4%	NA
Child Care Available per 100 Children Under 13	22.7	24.5	15.5	14.9	NA
Homeownership Rate	71.3% ¹	71.8% ²	NA	NA	NA
% Renters with 30% or More Rental Burden	44.9% ¹	46.5% ²	NA	NA	NA
Tillamook County Services	1999	2000	2001	2002	2003
One Night Shelter Count	508	29	41	44	15
# of New Units Created with OHCS Funding	30	0	0	66	0
OHCS Funding for Subsidized Housing	\$1.7 m	\$0	\$0	\$1.2 m	\$0
# Home Loans for Low-Income Households	1	0	0	3	1
\$ Home Loans for Low-Income Households	\$74,624	\$0	\$0	\$336,706	\$60,000
# Households Receiving Energy Assistance	NA	689	680	642	408
% of Population Enrolled in the Oregon Health Plan	NA	NA	NA	19.2%	14.3%
# Students Eligible for Free/Reduced Lunch	1,455	1,629	1,583	1,701	1,652
% Students Eligible for Free/Reduced Lunch	38.3%	43.3%	42.3%	46.6%	47.5%
% of Population Receiving Food Stamps	NA	NA	NA	15.7%	12.2%
% of Population Receiving TANF	NA	NA	NA	3.1%	2.2%
% of Population Receiving DHS Services	NA	NA	27.6%	28.9%	21.8%

¹ 1990 Census data, year is 1989
² 2000 Census data, year is 1999
³ 1998
⁴ 1996
 NA=Not Available

Endnotes

¹ Oregon Department of Human Services Integrated Client Database.

² Community Action Team, Inc.'s Community Services Block Grant Work Plan for 2003-05.

³ Please see Methodology and Data References section for information on Census Race/Ethnicity Categories.

⁴ Bureau of Economic Analysis: Regional Economic Accounts.