

Umatilla County

Major findings

According to the US Census, the poverty rate and the number of those in poverty decreased in Umatilla County between 1989 and 1999. The poverty rate decreased from 16.5 percent of the population to 12.7 percent. The county's poverty rate matched that of the state and the nation in 1999.

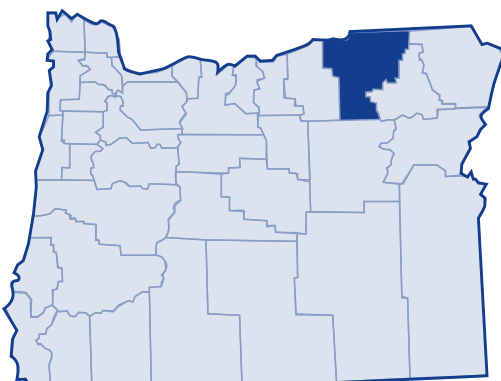
The median income in Umatilla County rose from \$22,791 to \$36,249 from 1989 to 1999.

Of Umatilla County residents in poverty, 41 percent earned 50 percent or less of the poverty threshold.

According to the basic family budget, families with one adult who earned median income for Umatilla County could not afford the basic family budget. Families headed by a single mother who lived in poverty had a 38.7 percent poverty rate, poverty for such families rose to 51.6 percent if it included a child under 5 years of age. The number of families headed by single mothers that lived in poverty rose from 388 families in 1979 to 748 families in 1999.

Poverty for Black, American Indian, Other and Hispanic Origin exceeded 20 percent. Unemployment rates rose from 6.3 in 2000 to 8.5 in 2003.

In 2003, 27.6 percent of Umatilla county residents received services from the Department of Human Services.¹



Low-income needs

Community Action Program East Central Oregon prioritized the needs of the low-income population in Umatilla County as follows:²

- Emergency rental/transitional housing opportunities for households who are homeless or at risk of losing housing
- Maintain access to Emergency Food Boxes and promote hunger awareness in the community
- Continue providing access to energy assistance funds during the high-cost winter months
- Increase access to low-cost medical care via the Oregon Health Plan; retain local medical services
- Provide assistance for Emergency Lodging / Emergency Shelter for homeless households
- Continue the programs that promote Early Childhood Education
- Retain and improve transportation programs to help serve those residing in rural communities
- Provide access to quality childcare and voucher assistance
- Promote the development of low-income housing and create safe housing opportunities for community members
- Access to job training opportunities to help households obtain living wage jobs
- Expand opportunity for area residents to receive weatherization services thus providing safe and healthy living environments
- Assist households in obtaining adequate clothing suitable for the seasonal weather conditions
- Improve and expand counseling/family case management for households in crisis to help them become self-reliant

Umatilla County

Growth

According to the 2000 Census, Umatilla County grew 19.1 percent between 1989 and 1999. The US Census Bureau determined the poverty status of 67,329 county residents and found that 12.7 percent (8,524 people) lived below the poverty threshold. This is a decrease of 9.5 percent in the number of persons living in poverty (9,419 people) in 1989. The overall percent of Umatilla County's population living in poverty decreased from 1989 to 1999, as did the number of people living in poverty.

20-year trend

In the 20 years after 1979, the poverty rate in Umatilla County increased from 10.8 percent of the population to 12.7 percent. The number of persons in poverty rose from 6,207 people to 8,524 people. The rate fell to match state and national averages by 1999.

Poverty and age

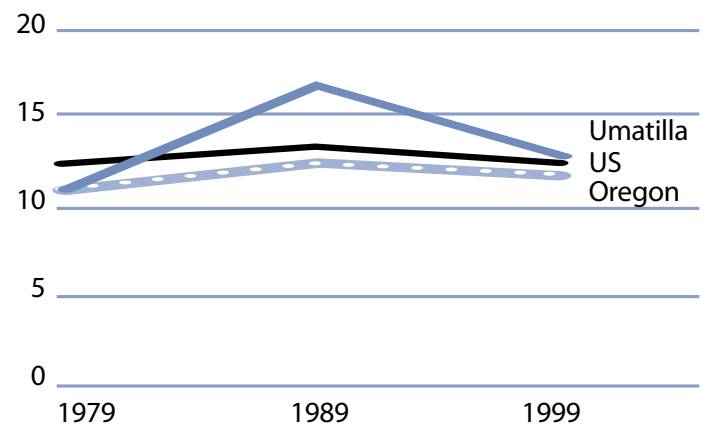
In the 2000 Census, among all age categories examined, children 5 years of age and younger experienced the highest rate of poverty at 20.1 percent. Children younger than 18 years of age experienced poverty at 17 percent. People 65 and older experienced the lowest rate at 8.7 percent. Over the 20-year period from 1979 to 1999, the rate of poverty improved people 65 and older.

Poverty in selected communities
Number of persons below poverty level
(poverty rate)

	1989	1999	Percent Change (rate difference)
Umatilla County	9,419 (16.5%)	8,524 (12.7%)	-9.5% (-3.9%)
Oregon Statewide	344,867 (12.4%)	388,740 (11.6%)	12.7% (-0.8%)
United States	31,742,864 (13.1%)	33,899,812 (12.4%)	6.8% (-0.7%)

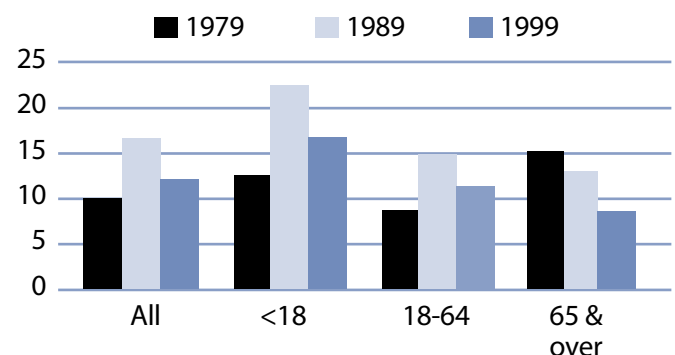
Source: US Census. County numbers have been rounded and, therefore, may not add exactly to totals.

Poverty rates 1979-1999



Source: US Census.

Rate of poverty by age



Source: US Census.

Umatilla County

Poverty and Umatilla County families

In 1999, 1,756 Umatilla County families lived in poverty (9.8 percent). Of the families in poverty, 65.7 percent (1,154 families) had a worker and 21.5 percent (378 families) had a full-time year-round worker.

The poverty rate was higher for families with children. Families with at least one child younger than 18 experienced poverty at a rate of 14.1 percent. Families with a child 5 years and younger experienced poverty at a higher rate of 18.9 percent. The rate for families with children headed by single mothers was 38.7 percent and was even higher with younger children (less than 5 years) at 51.6 percent.

The poverty rate for married couples with children under 18 was lower at 6.9 percent. From 1979 to 1999, the number of female-headed households with children (no husband present) who lived in poverty increased from 388 families in 1979 to 748 families in 1999.

Poverty and race/ethnicity

Among racial/ethnic groups,³ White residents comprised the majority of people in poverty at 67.7 percent. When examining poverty based on race/ethnicity, however, the poverty rate among White was 10.4 percent.

Black, Other and Hispanic Origin experienced disproportionately higher rates of poverty, with Black at 33 percent and poverty among Other and Hispanic Origin in excess of 23 percent. From

Umatilla County families in poverty

Number Below Poverty Level (poverty rate)				% Change
	1979	1989	1999	1979-99 (rate difference)
All Families	1,262 (7.9%)	2,010 (12.8%)	1,756 (9.8%)	39.1% (1.9%)
With Children under 18	884 (10.4%)	1,563 (18.8%)	1,363 (14.1%)	54.2% (3.7%)
Female-headed with Children under 18	388 (34.9%)	767 (52.7%)	748 (38.7%)	92.8% (3.8%)

Source: US Census. County numbers have been rounded and, therefore, may not add exactly to totals.

Umatilla County poverty and race/ethnicity

Race/Ethnicity	% Total 1999 Population (population)	% Poverty 1999 Population (poverty population)	Poverty Rate by Race 1999	Poverty Rate by Race 1989
White	82.4% (55,504)	67.7% (5,769)	10.4%	14.1%
Black	0.5% (361)	1.4% (119)	33.0%	45.9%
American Indian	3.2% (2,138)	5.4% (458)	21.4%	29.4%
Asian/Pacific Islander	0.7%/0.1% (477/62)	0.4%/0.2% (31/18)	6.5%/29.0%	17.1%*
Other	10.9% (7,358)	21.7% (1,850)	25.1%	43.7%
2 or More Races	2.1% (1,429)	3.3% (279)	19.5%	NA
Hispanic Origin	16.3% (10,960)	29.9% (2,546)	23.2%	41.2%

* Asian and Pacific Islander were not separate categories in the 1990 Census.

Umatilla County

1989 to 1999, most racial categories experienced improved poverty rates.

County income

On a per capita basis, Umatilla County's personal income was \$22,789 in 2002, about 79 percent of the state average of \$28,792, and 74 percent of the national average, \$30,906. Per capita income in Umatilla County rose 2.2 percent between 2001 and 2002. The 10-year trend, from 1992 to 2002, in per capita income shows average annual growth of 3.9 percent. Average earnings per job for 2001 were \$27,728 in Umatilla County compared to \$33,063 for the state.⁴

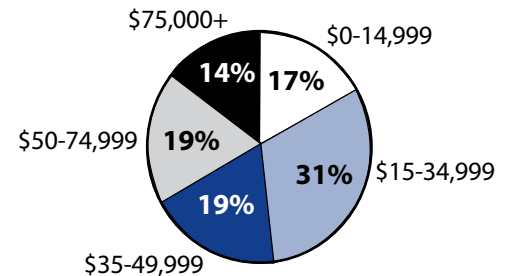
Poverty thresholds

Segmenting census data by income reveals more detail about the people experiencing poverty in Umatilla County. The 2000 Census showed that 3,466 people or 40.7 percent of those living below the federal poverty threshold were actually earning 50 percent or less of the poverty threshold. Other segments of the population earned equal to or above the poverty level but still needed assistance. In Oregon, 185 percent of the poverty level is the income guideline used for federal food programs such as food stamps, child nutrition, and the Women, Infants, and Children program. In 1999, 33.1 percent of Umatilla County's population, or 22,289 people earned below 185 percent of the poverty threshold.

Public assistance

Participation in public assistance programs serves as an indirect measure—or indicator—of the extent of poverty and steps taken to serve the public. According to the 2000 Census, 863 households or 3.4 percent of all households in Umatilla County reported public assistance income. The average amount of public assistance income for 1999 was \$2,184. The 20-year trend showed a decrease in households that reported receiving public assistance income, from 1,208 households or 5.7 percent of all households in 1979.

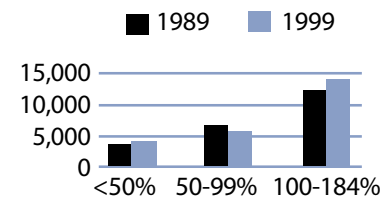
1999 household income distribution—Umatilla County



Source: US Census.

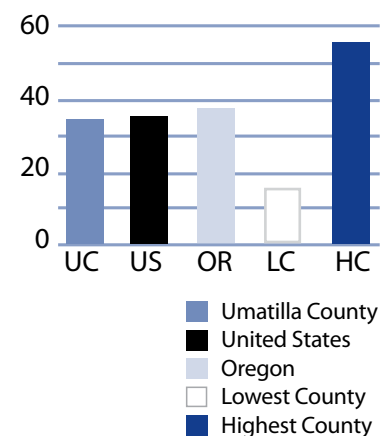
Note: The median household income in Umatilla County was \$36,249 in 1999 compared to \$22,791 in 1989 (59 percent increase).

Number of persons in poverty Threshold percentiles



Source: US Census.

Public assistance in Oregon Rate per thousand population



Source: US Census.

Umatilla County

Basic family budget

According to US Department of Agriculture statistics released in October 1999, about 12.6 percent of Oregon households had difficulty meeting their basic need for food. This chart outlines typical expenses for four family types in Umatilla County and the corresponding income those families would need to meet their expenses.

Families with one adult earning Umatilla County's median income could not afford the basic family budget.

To learn more about this basic family budget, see Methodology and Data References section.

What the poverty threshold buys

Families at the poverty level in Umatilla County could afford 43.1 to 47.1 percent of this basic family budget.

Wages

According to the Oregon Employment Department, the average weekly wage in Umatilla County is \$483.03. The construction industry had the highest weekly average of \$826.83 and the retail trade industry had the lowest weekly average of \$348.06.

This chart illustrates a family's ability to be self-sufficient based on earnings of average wages for Umatilla County. The two-worker scenario relies on both workers earning average wages.

An adult who has three children and who worked full-time at Umatilla County's average wage could not afford the basic budget.

Umatilla County's basic family budget

Basic Family Budget/Monthly	1 Adult/ 1 Child	1 Adult/ 3 Children	2 Adults/ 1 Child	2 Adults/ 3 Children
Housing	\$477	\$657	\$477	\$657
Food	\$230	\$489	\$388	\$647
Child Care	\$375	\$833	\$375	\$833
Transportation	\$197	\$197	\$277	\$277
Health Care	\$245	\$245	\$293	\$293
Other Necessities	\$219	\$355	\$268	\$404
Taxes	\$288	\$501	\$410	\$572
Basic Family Budget Needed/Monthly	\$2,031	\$3,277	\$2,488	\$3,683
Basic Family Budget Total/Annual	\$24,374	\$39,325	\$29,861	\$44,195
Median Annual Income (Census 2000)	\$19,457	\$19,457	\$49,194	\$49,194
Median Family Income as % of Basic Budget	79.8%	49.5%	164.7%	111.3%

Poverty and Umatilla County's basic family budget

Basic Family Budget/Monthly	1 Adult/ 1 Child	1 Adult/ 3 Children	2 Adults/ 1 Child	2 Adults/ 3 Children
Poverty Threshold	\$11,483	\$16,954	\$13,410	\$19,882
% of Basic Budget	47.1%	43.1%	44.9%	45.0%

Umatilla County wages and the basic budget

	1 Worker	1 Worker	2 Workers	2 Workers
Average Monthly Wage (AMW)*	\$2,077	\$2,077	\$4,154	\$4,154
	1 Adult/ 1 Child	1 Adult/ 3 Children	2 Adults/ 1 Child	2 Adults/ 3 Children
Self Sufficiency Wage (SSW)**	\$2,031	\$3,277	\$2,488	\$3,683
Difference (SSW-AMW)	\$46	-\$1,200	\$1,666	\$471
Wage as % of Self Sufficiency	102.3%	63.4%	167.0%	112.8%

* Source: 1999 Oregon Covered Employment and Payrolls.
** Based on Basic Family Budget for Umatilla County.

Umatilla County

Umatilla County Poverty Measures	1995	2000	2001	2002	2003
Population	59,249 ¹	70,548 ²	70,621	71,413	72,008
% of People Living Below Poverty Level	16.5% ¹	12.7% ²	NA	NA	NA
Median Income	\$22,791 ¹	\$36,249 ²	NA	NA	NA
Unemployment Rate	6.9	6.3	7.2	7.9	8.5
8th Grade Drug Use	15.6% ³	13.8%	NA	12.6%	NA
HS Dropout	6.5% ⁴	7.0%	5.0%	4.3%	NA
Teen Pregnancy per 1,000 Ages 10-17	24.5	21.3	14.6	14.5	NA
Prenatal Care	69.3%	74.2%	76.4%	72.8%	NA
Child Care Available per 100 Children Under 13	19.0	17.9	15.7	16.4	NA
Homeownership Rate	62.0% ¹	64.9% ²	NA	NA	NA
% Renters with 30% or More Rental Burden	37.3% ¹	38.0% ²	NA	NA	NA
Umatilla County Services	1999	2000	2001	2002	2003
One Night Shelter Count	203	59	27	195	313
# of New Units Created with OHCS Funding	30	51	92	210	145
OHCS Funding for Subsidized Housing	\$1.7 m	\$3.1 m	\$5.3 m	\$4.5 m	\$1.2 m
# Home Loans for Low-Income Households	51	34	40	29	20
\$ Home Loans for Low-Income Households	\$3.4 m	\$2.3 m	\$2.9 m	\$2.2 m	\$1.6 m
# Households Receiving Energy Assistance	NA	2,170	1,874	2,161	2,215
% of Population Enrolled in the Oregon Health Plan	NA	NA	NA	20.9%	18.2%
# Students Eligible for Free/Reduced Lunch	5,715	5,413	6,024	6,216	6,574
% Students Eligible for Free/Reduced Lunch	43.9%	42.0%	46.2%	47.7%	50.2%
% of Population Receiving Food Stamps	NA	NA	NA	16.7%	16.3%
% of Population Receiving TANF	NA	NA	NA	2.6%	2.1%
% of Population Receiving DHS Services	NA	NA	28.1%	30.1%	27.6%

¹ 1990 Census data, year is 1989
² 2000 Census data, year is 1999
³ 1998
⁴ 1996
 NA=Not Available

Endnotes

¹ Oregon Department of Human Services Integrated Client Database.

² Community Action Program East Central Oregon Community Services Block Grant Work Plan for 2003-05.

³ Please see Methodology and Data References section for information on Census Race/Ethnicity Categories.

⁴ Bureau of Economic Analysis: Regional Economic Accounts.