

**What is a stroke?\***

A stroke occurs when a blood vessel (artery) that supplies blood to the brain bursts or is blocked by a blood clot. Within minutes, the nerve cells in that area of the brain are damaged, and they may die within a few hours. As a result, the part of the body controlled by the damaged section of the brain cannot function properly. If medical treatment begins soon after symptoms are noticed, fewer brain cells may be permanently damaged.

See Healthwise for additional information on [stroke](#).

\*Adapted with permission from [Healthwise](#)® Knowledgebase, © 1995-2006 Healthwise, Incorporated, P.O. Box 1989, Boise, Idaho 83701. ALL RIGHTS RESERVED

**Summary display**

The following display shows the death rate for each hospital. Each hospital is compared to the state death rate. If the death rate is significantly lower than the state death rate, the hospital is displayed as "Better than Average". If the death rate is not significantly different from the state death rate, the hospital is displayed as "Average". If the death rate is significantly higher than the state death rate, the hospital is displayed as "Worse than Average." Hospitals with less than 30 cases are displayed as "Too few cases". Hospitals with no cases are displayed as "No Cases". Within each category, hospitals are listed in alphabetical order, not order of performance.

**Stroke death rate, 2007****State death rate: 10.6%****Better than Average**

OHSU Hospital

**Average**

Adventist Medical Center	Providence Milwaukie Hospital
Bay Area Hospital	Providence Portland Medical Center
Columbia Memorial Hospital	Providence St. Vincent Medical Center
Good Samaritan Regional Med Ctr (Corvallis)	Rogue Valley Medical Center
Good Shepherd Medical Center	Sacred Heart Medical Center
Holy Rosary Medical Center	Salem Hospital
Kaiser Sunnyside Medical Center	Samaritan Albany General Hospital
Legacy Emanuel Hospital	Samaritan Lebanon Community Hospital
Legacy Good Samaritan Hospital and Med Ctr	Samaritan Pacific Communities Hospital
Legacy Meridian Park Hospital	Sky Lakes Medical Center
Legacy Mt. Hood Medical Center	St. Charles Medical Center (Bend)
McKenzie-Willamette Medical Center	Three Rivers Community Hospital
Mercy Medical Center	Tuality Healthcare
Mid-Columbia Medical Center	Willamette Falls Hospital
Providence Medford Medical Center	Willamette Valley Medical Center

**Worse than Average**

Providence Hood River Memorial Hospital

### Too Few Cases

Ashland Community Hospital	Providence Newberg Hospital
Blue Mountain Hospital	Providence Seaside Hospital
Coquille Valley Hospital	Samaritan North Lincoln Hospital
Cottage Grove Hospital	Santiam Memorial Hospital
Curry General Hospital	Silverton Hospital
Grande Ronde Hospital	Southern Coos Hospital and Health Center
Harney District	St. Anthony Hospital
Lake District	St. Charles Medical Center (Redmond)
Lower Umpqua Hospital	St. Elizabeth Health Services
Mountain View Hospital	Tillamook County General Hospital
Peace Harbor Hospital	Wallowa Memorial Hospital
Pioneer Memorial Hospital (Heppner)	West Valley Community Hospital
Pioneer Memorial Hospital (Prineville)	

### No Cases

#### Detailed hospital comparisons

[Detailed hospital comparisons](#)

#### Technical documents

[Technical documents](#)

#### Hospital comments

[Hospital comments](#)

## Detailed hospital comparisons

### What do these indicators mean?

**Volume.** In contrast with some of the surgical procedures included in this report, volume is not reported for stroke. Please refer to the background information for more information on volume indicators.

**Death Rate.** The stroke death rate is the percent of patients admitted for stroke who died in the hospital. Nationally in 2004 (the most recent national data), the in-hospital death rate for stroke was 10.5%<sup>1</sup>. In Oregon, the death rate was 10.6% in 2007. This report uses the statewide average as the reference rate.

Each hospital rate is displayed as a point on a line in the graphs displayed at the end of this document. These lines represent the amount of random variation in the data. If the hospital line crosses the dotted line representing the state average, the hospital rate is “within the margin of error” and therefore not statistically different than the state average.

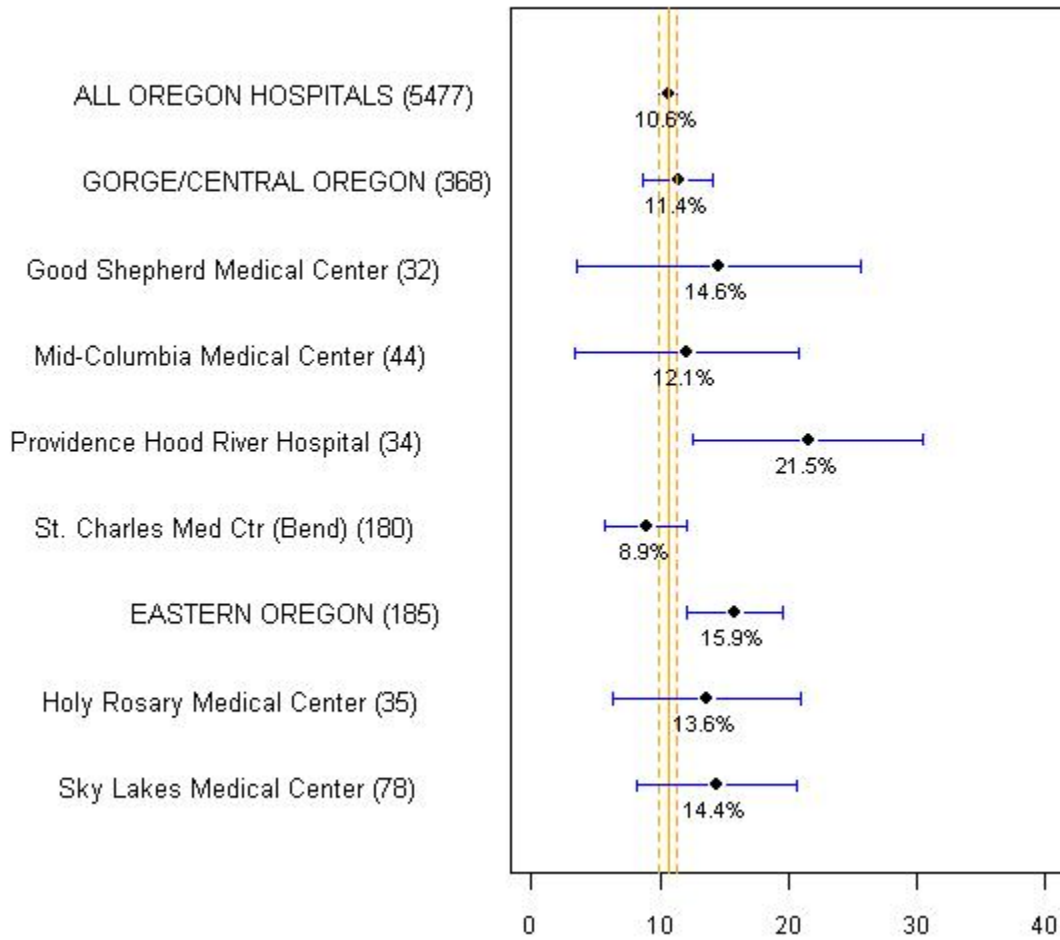
- Number of stroke patients appears in parentheses. Hospitals not shown admitted fewer than 30 stroke patients in 2007.
- Rates have been adjusted for age, sex, and risk of death
- Applies to adults 18 years of age and older.
- See [Technical Documentation](#) for more detail
- According to the Agency for Healthcare Research and Quality, lower rates may represent better quality.

Only Providence Hood River Memorial Hospital had a death rate that was statistically higher than the state average. Only OHSU Hospital had a death rate that was statistically lower than the state average.

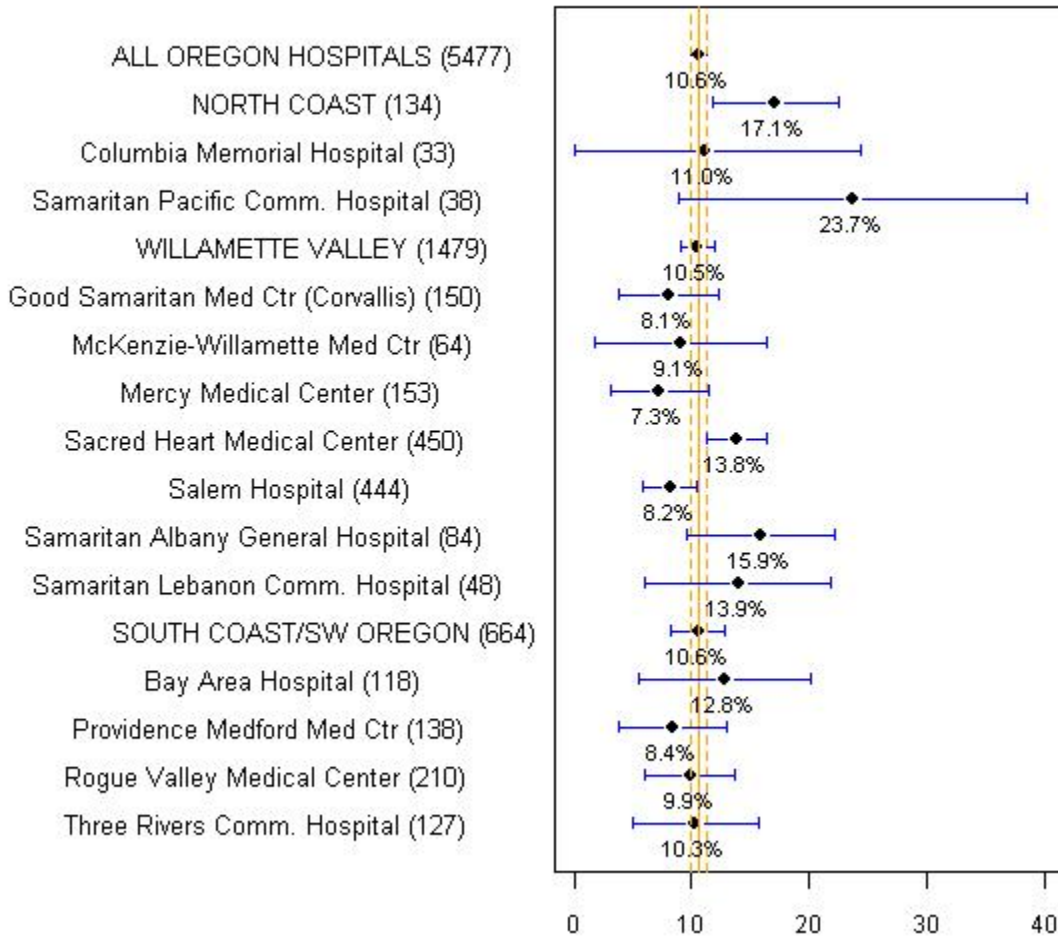
---

<sup>1</sup> Healthcare Cost and Utilization Project, Trends in Hospital Risk-Adjusted Mortality for Select Diagnoses and Procedures, 1994-2004. Access on October 24, 2007 from <http://www.hcup-us.ahrq.gov/reports/statbriefs/sb38.pdf>

Acute Stroke Death Rate (IQI17)



Acute Stroke Death Rate (IQI17)



Acute Stroke Death Rate (IQI17)

