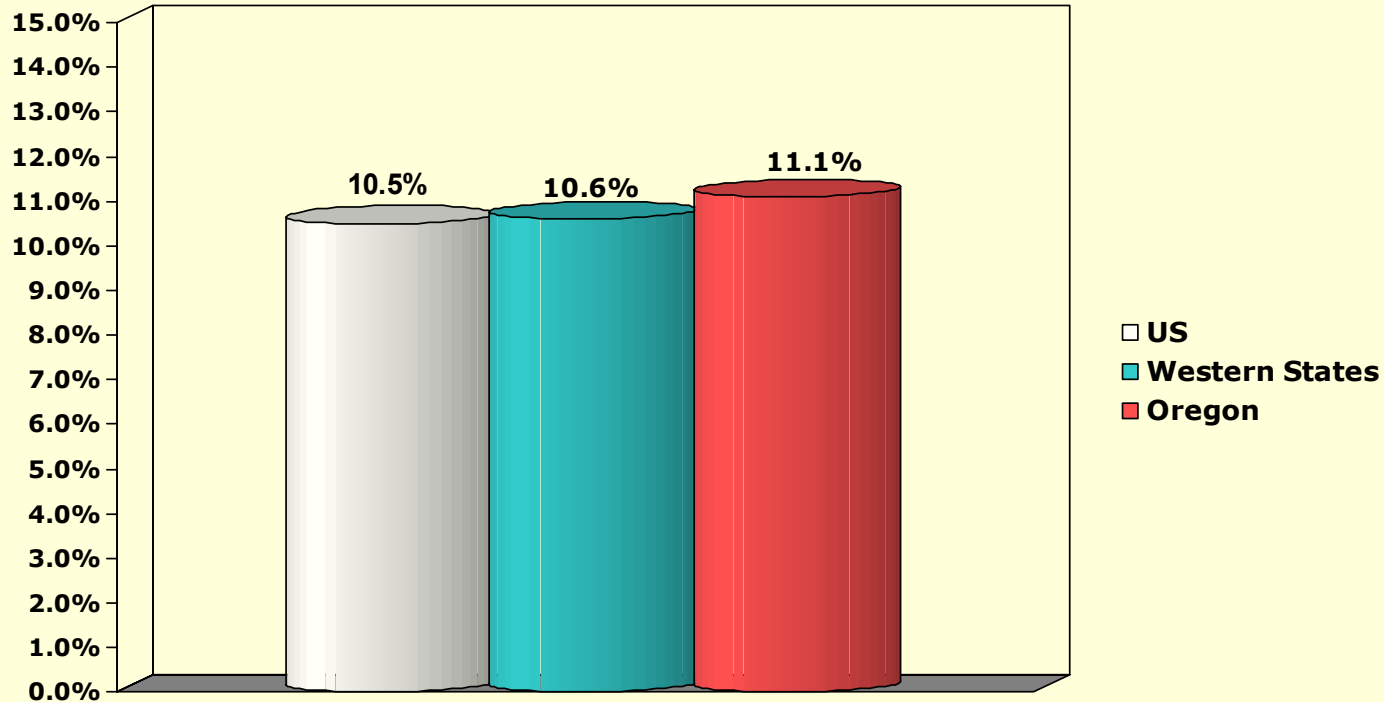


**Risk-Adjusted Death Rate for Abdominal Aortic Repair Admissions  
US, Western States and Oregon, 2002**



Rate excludes obstetric and neonatal admissions and transfers to another hospital.

Source: HCUPnet, Healthcare Cost and Utilization Project. Agency for Healthcare Research and Quality, Rockville, MD. <http://hcup.ahrq.gov/HCUPnet.asp>, AHRQ Inpatient Quality Indicators, 2002. Oregon data from Office for Oregon Health Policy and Research, 2002.

Western Region states include Alaska, Washington, Oregon, California, Idaho, Nevada, Wyoming, Montana, Utah, Colorado, Arizona, and New Mexico.