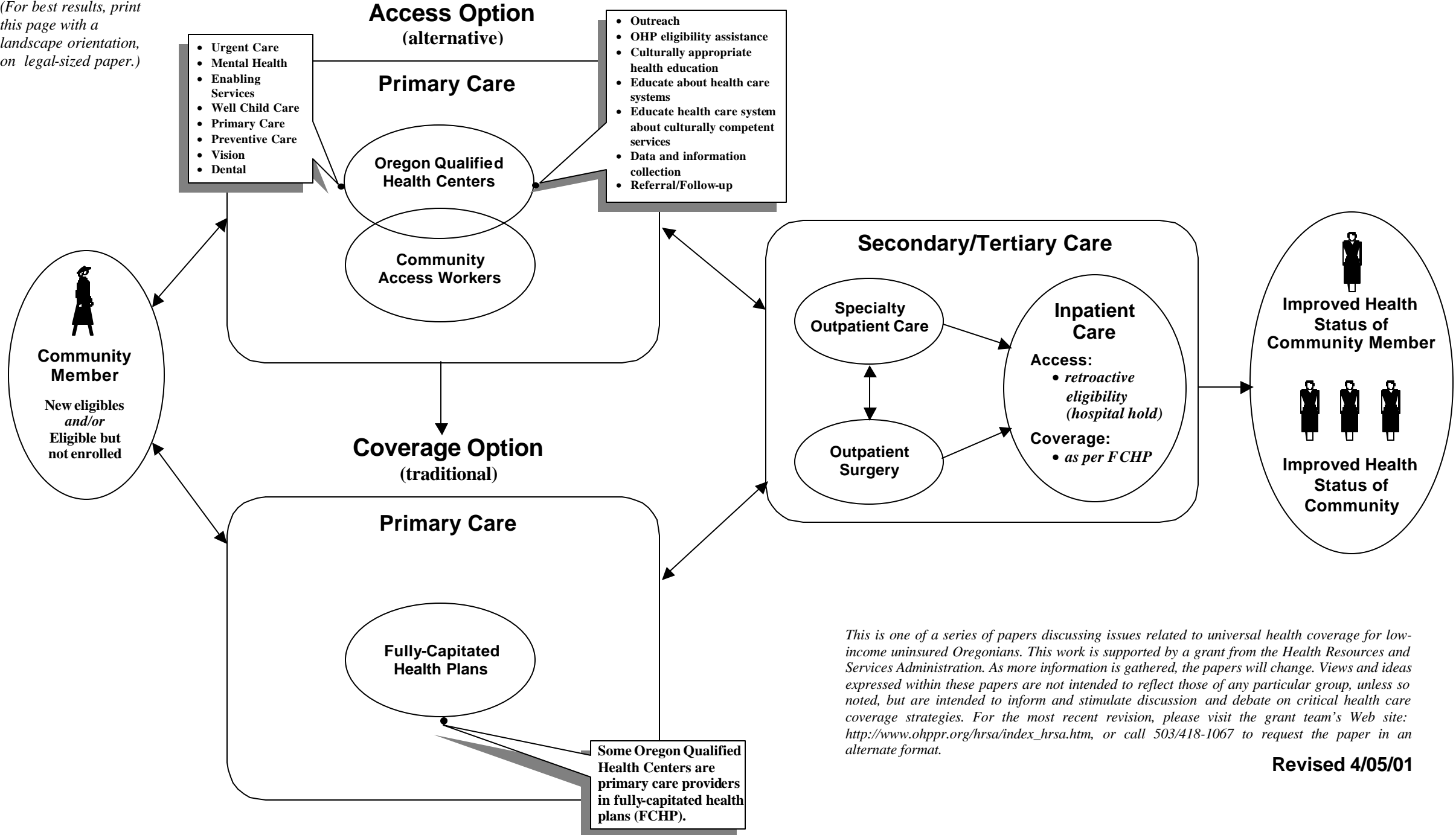


# Attachment B

(For best results, print this page with a landscape orientation, on legal-sized paper.)

# Community-Based Delivery System



*This is one of a series of papers discussing issues related to universal health coverage for low-income uninsured Oregonians. This work is supported by a grant from the Health Resources and Services Administration. As more information is gathered, the papers will change. Views and ideas expressed within these papers are not intended to reflect those of any particular group, unless so noted, but are intended to inform and stimulate discussion and debate on critical health care coverage strategies. For the most recent revision, please visit the grant team's Web site: [http://www.ohppr.org/hrsa/index\\_hrsa.htm](http://www.ohppr.org/hrsa/index_hrsa.htm), or call 503/418-1067 to request the paper in an alternate format.*

**Revised 4/05/01**