

A detailed black and white illustration of a person wearing a hat and a light-colored shirt, standing on a wooden platform or ladder. The person is reaching up to harvest fruit from a large, leafy tree. The tree is heavily laden with round fruits, possibly apples or oranges. The illustration is positioned on the left side of the page, with the person's head and shoulders partially overlapping the large title 'HOOD RIVER'.

HOOD RIVER



The Hood River

Cultural Resource

Inventory

Presented to the
City of Hood River

Prepared by
Donovan and Associates
Hood River, Oregon

August 31, 1992

**Hood River Cultural Resource Inventory
Hood River, Oregon**

Summary Report

Prepared for

**The City of Hood River
Hood River, Oregon**

by

**Donovan and Associates
111.5 Third Street
Hood River, Oregon**

August 31, 1992

Hood River Historic Inventory

Table of Contents

Acknowledgements

Introduction

Methodology

List of Properties

Observations

Treatment Strategies/Recommendations

Appendices

- A. Map of Study Area
- B. Data Base Sorted by Date
- C. Data Base Sorted by Style
- D. Data base Sorted by Rank
- E. Evaluation Sheet
- F. National Register Criteria for Evaluation
- G. Eliminated Properties

Acknowledgments

I would like to express my thanks to many people who worked on the project from the field investigation to historic research. Among these are Cindy Walbridge, Project Supervisor and City Planner, for her enthusiasm and staff time; Karen Prosser and Lana Edwards, Administrative Assistant for the City of Hood River, for their help with announcement, xeroxing, and public meetings; the Hood River County Historic Museum for their support and use of their extensive library; and the Hood River County Offices of Deeds and Records, and Assessments for their good nature and permitting access to all their records and "the vault".

Special thanks go to Ruth Guppy, Bernie Diamond, and Bill Pattison for the many hours of historic research they conducted on past individuals of Hood River. Their love for Hood River, its buildings, and people are evident in the knowledge they carry.

Many hours, both day and night, were donated by members of the evaluation committee. I would like to thank Karen Mirande, Bruce Thesenga, Bill Guevermont, Bill Pattison and Cindy Walbridge for their time and interest. A special thanks goes to Jack Kent, the City Council Liaison, for serving on the evaluation committee, and for his personal interest in Hood River's historic resources.

I would like to thank the consultants who played an important part in all phases of the inventory. Earlene Hinrich, Research Assistant, Hood River County Museum, for all her time spent pouring through historic documents, city directories, and museum file: her commitment to the project and meticulous indexing is greatly appreciated; Bruce Howard for the endless hours spent entering field and historic data and for his great organizational skills; Jeff Staver for preparing the site and vicinity maps in the midst of pursuing his architecture degree from the University of Oregon; Kimberly Lakin for helping with the architecture field forms; and Tibby O'Brien for writing a portion of the individual biographies.

Sally Donovan
Donovan and Associates
Project Manager

Introduction

The Cultural Resource Inventory and the summary report represents a major step by the City of Hood River towards development of a comprehensive Cultural Resource Protection Plan. The purpose of the inventory is to provide a data base which will serve as a management guide for the City's cultural resources and assist the City and Landmarks Commission in future preservation policies, planning, and development. The inventory will also provide the City with an informational base for potential individual National Register of Historic Places nominations, National Register Historic Districts and/or local Conservation Areas.

The project is also a major step by the State Historic Preservation Office (SHPO) towards compliance with the National Historic Preservation Act of 1966 (NHPA), which requires the SHPO to survey and inventory cultural resources throughout the state. The project will also be used by the City of Hood River to meet the state's land use goals as outlined in LCDC's Goal 5. The data will serve as a basis for updating the Goal 5 element of the City's Comprehensive Plan. The completed inventory will be on file at the City and SHPO.

The project was conducted from January 1992 through August 1992 by Donovan and Associates, a preservation consulting firm, under contract with the City of Hood River. The project, the Cultural Resource Inventory of Hood River, has been financed in part with federal funds by the National Park Service, Department of Interior, as provided through the State Historic Preservation Office and in part by the City of Hood River.

The following summary report presents the findings of the survey and inventory of historic resources within the 1992 study area. The study area includes all properties at least fifty years old which have not been substantially altered. The study area is roughly bounded by the Hood River on the east, Eugene Street on the south, the railroad tracks on the north, and Thirteenth Street on the west. The downtown is excluded from the study area; the commercial core was inventoried in 1988. A Historic Context Statement was completed for the City of Hood River in 1991.

The project consisted of four major phases: literature search, architectural survey work, historic research, and evaluation. Each of these areas will be discussed in more depth in the Methodology Section of the report.

The Hood River Cultural Resource Inventory forms are evolving documents. They will require regular updating and review. Resources eliminated may be included at a later date if the resource undergoes restoration or more historic information is gathered on the resource. Properties which no longer meet the eligibility requirements should be removed from the inventory.

Methodology

The Hood River Cultural Resource Inventory began in January 1992 and was completed in August 1992. The project consisted of four major phases 1) Literature search and review of existing documents 2) Architectural field investigation 3) Historic research on individual buildings 4) Evaluation and Summary Report.

1) *Literature Search:* A search was conducted to catalogue available historic literature which might be useful in the preparation of the inventory. Resources at the Hood River County Museum, the Hood River County Courthouse, the City Hall, the Hood River County Library, and the Wasco County Library were checked for applicable sources. The 1988 Hood River Inventory and the properties listed in the City's Comprehensive Plan were checked for associated historic material.

2) *Architectural Field Investigation:* A windshield investigation was conducted which involved compiling a list of all the buildings over 50 years old within the study area. Buildings which were extensively altered were excluded from further research but noted on a list of "Eliminated" buildings (see Appendix G). No field documentation or historic research was conducted on these buildings.

After a list was compiled by street of the resources included in the survey, each building was architecturally documented and photographed. A site plan and vicinity map was also drawn for each property. The City permit files were checked to record any alterations to the buildings. Construction dates were obtained from the county assessor's office and varied as possible. All architectural data, current owner information, and the legal description were entered into the data base. The data base could be sorted by each field such as by date, style and rank (see Appendix B, C, and D). This data provided the information depicted on the first page of the inventory form. The photograph, site plan, and vicinity map were compiled and comprised the last page of the inventory form for each building.

3) *Historic Research:* A title search was conducted on each property on the list compiled in the architectural survey. The title research was conducted to 1942, the 50 year cut off date. The owner's names were then entered in the data base and sorted alphabetically. Each owner was then researched at the county museum. All the biography, subject, and photographic files were researched and corresponding historic information xeroxed. The city, county, and state history books were researched for biographies. The city directories dating 1900, 1905, 1908-09, 1910, 1917, 1920, and 1948 were checked as well as the 1924, 1925, and 1930 telephone directories. The historic information was inserted into files which were indexed by owner's name.

Emigration record books, discharge papers, and some wills were researched at the Hood River County Assessor's Office. City records were checked for historic information. A 1913-14 city tax book provided information on the ownership of the property as well as the value of the house and land. This information was added to the owner files. Historic interviews with long-time residents of Hood River also provided valuable information on the owners.

A chain of title was established for each property from the time the building was constructed into the 1940s. A short biography was written from the biographical information compiled. This information comprised the second page (sometimes third and fourth) of the inventory forms. If no historic information was found, the notation "no biographical information is known at this time" was entered after the name of the owner. As information becomes available, biographies can be updated and inserted on the form.

4) *Evaluation and Final Report:* Evaluation criteria was developed from guidelines established by the National Park Service for evaluation for inclusion in the National Register of Historic Places (see Appendix F), and the ranking system used by the State Advisory Committee on Historic Preservation. The form (see Appendix E.) was developed from the evaluation sheets previously used in the cities of Hood River, Sherwood, Gresham and NW Portland.

An evaluation committee was organized for the purpose of evaluating each property as to its significance. The committee consisted of a Bed and Breakfast owner, a liaison from the Hood River County Historic Museum, an architect, a landscape architect, a liaison from the City Council, the City Planner, and the lead consultant.

Each property was evaluated and ranked based on Historic Considerations, Architectural Considerations, Physical Integrity and Site Integrity. A numerical value was given to each category based on various areas within each category. The resources were then ranked on a point system that follows:

Primary	40 points or up
Secondary	30 to 39
Contributing	20 to 29
Not included	19 and under

The points were tallied and a rank of Primary, Secondary, and Contributing were given to each property. The following ranking are described as:

Primary Significance: Individually the most important properties in the city as identified by their outstanding architectural qualities, historical associations, or relation to the environment. These properties may be eligible for local Landmark status or the National Register of Historic Places.

Secondary Significance: Properties which are not exceptional but are important based on their architectural, historical, or environmental criteria. Properties *may be* eligible for local Landmark designation or the National Register of Historic Places.

Contributing Significance: Buildings which provide the setting for more important buildings and which enhance the character of the neighborhood, properties associated with people or events of some importance, or which show various stages in the development of the city. These properties may be eligible for local Landmark designation or would contribute to a local Conservation District or National Register District.

A Primary or Secondary ranking *does not* mean that a property has been designated a local Landmark or listed in the National Register. Designation as a Local Landmark must await further action by property owners, the City and/or the Landmarks Commission. Listing for the National Register must be recommended by the State Advisory Committee on Historic Preservation and approved by the U.S. Department of the Interior. Listing in the inventory *does not* guarantee National Register designation or local listing.

Complete Listing

	Address	Date	Style	Rank	SHPO #
607	Cascade Street	1925	Bungalow	Primary	39
613	Cascade Street	1896	Vernacular	Primary	40
705	Cascade Street	1910	Dutch Colonial/Vernacular	Contributing	41
721	Cascade Street	1895	Queen Anne/Vernacular	Primary	42
801	Cascade Street	1905	Queen Anne	Contributing	43
803	Cascade Street	1912	Bungalow	Secondary	44
808	Cascade Street	1921	Bungalow	Primary	45
809	Cascade Street	1905	Vernacular	Contributing	46
810	Cascade Street	1919	Vernacular/Bungalow	Contributing	47
814	Cascade Street	1900	Vernacular	Secondary	48
823	Cascade Street	1934	English Cottage	Primary	49
902	Cascade Street	1922	Bungalow	Secondary	50
903	Cascade Street	1908	Bungalow	Primary	51
906	Cascade Street	1922	Bungalow	Secondary	52
907	Cascade Street	1913	Craftsman	Primary	53
911	Cascade Street	1900	Vernacular/Colonial Revival	Primary	54
915	Cascade Street	1927	Bungalow	Primary	55
916	Cascade Street	1922	Bungalow	Contributing	56
917	Cascade Street	1908	Bungalow	Contributing	57
923	Cascade Street	1908	Bungalow	Primary	58
924	Cascade Street	1928	Bungalow	Contributing	59
1001	Cascade Street	1912	Craftsman	Primary	60
1002	Cascade Street	1908	Craftsman	Secondary	61
1007	Cascade Street	1913	Craftsman/Vernacular	Contributing	62
1021	Cascade Street	1915	Bungalow	Primary	64
1024	Cascade Street	1924	Bungalow	Contributing	65
1025	Cascade Street	1912	Bungalow	Secondary	66
1026	Cascade Street	1910	Bungalow	Primary	67
1028	Cascade Street	1910	Bungalow/Vernacular	Contributing	68
1202	Cascade Street	1929	Bungalow	Secondary	69
1222	Cascade Street	1927	Bungalow	Secondary	71
1223	Cascade Street	1921	Craftsman/Vernacular	Contributing	72
714	Columbia Street	1930	Vernacular	Primary	73
720	Columbia Street	1908	Craftsman/Classic Box	Primary	74
801	Columbia Street	1924	Bungalow	Contributing	75
802	Columbia Street	1905	Craftsman/Classic Box	Secondary	76
803	Columbia Street	1923	Bungalow	Secondary	77
806	Columbia Street	1905	Vernacular	Secondary	78
809	Columbia Street	1895	Vernacular	Secondary	79
814	Columbia Street	1905	Vernacular	Secondary	80
821	Columbia Street	1914	Bungalow	Contributing	82
824	Columbia Street	1905	Vernacular	Secondary	83
828	Columbia Street	1933	Vernacular/Tudor	Contributing	84

Complete Listing

902	Columbia Street	1922	Bungalow	Contributing	85
909	Columbia Street	1931	English Cottage	Primary	87
910	Columbia Street	1915	Bungalow	Primary	88
913	Columbia Street	1927	Bungalow	Secondary	89
916	Columbia Street	1914	Craftsman/Vernacular	Secondary	90
917	Columbia Street	1925	Vernacular/Bungalow	Primary	91
920	Columbia Street	1916	Bungalow	Primary	92
922	Columbia Street	1924	Bungalow/Mediterranean	Primary	93
924	Columbia Street	1925	Bungalow	Contributing	94
925	Columbia Street	1924	Bungalow	Contributing	95
1009	Columbia Street	1912	Queen Anne/Craftsman	Primary	96
1015	Columbia Street	1908	Queen Anne	Primary	97
1016	Columbia Street	1915	Bungalow	Primary	98
1018	Columbia Street	1910	Arts & Crafts	Primary	99
1019	Columbia Street	1910	Dutch Colonial Revival	Secondary	100
1023	Columbia Street	1927	English Cottage/Vernacular	Secondary	101
1024	Columbia Street	1909	Vernacular	Contributing	102
1027	Columbia Street	1937	English Cottage	Primary	103
1201	Columbia Street	1923	Bungalow	Secondary	104
1204	Columbia Street	1936	Norman Farmhouse	Primary	105
1206	Columbia Street	1915	Bungalow	Secondary	106
1219	Columbia Street	1905	Queen Anne	Primary	108
1220	Columbia Street	1926	Bungalow	Secondary	109
1222	Columbia Street	1926	English Cottage	Primary	110
316	East Eugene Street	1910	Vernacular/Bungalow	Contributing	111
11	Eugene Street	1915	Bungalow	Contributing	112
313	Eugene Street	1905	Queen Anne	Secondary	113
509	Eugene Street	1913	Bungalow	Contributing	114
717	Eugene Street	1908	Vernacular	Contributing	115
823	Eugene Street	1916	Greek Revival	Primary	116
903	Eugene Street	1913	Craftsman/Vernacular	Primary	117
914	Eugene Street	1913	Vernacular	Secondary	118
915	Eugene Street	1912	Colonial Revival/Vernacular	Secondary	119
917	Eugene Street	1922	Vernacular	Contributing	120
1004	Eugene Street	1914	Bungalow	Secondary	121
1009	Eugene Street	1916	American Renaissance	Primary	122
1107	Eugene Street	1912	Bungalow	Secondary	123
1110	Eugene Street	1905	Vernacular	Primary	124
1113	Eugene Street	1908	Colonial Revival	Primary	125
1114	Eugene Street	1905	Vernacular	Secondary	126
1207	Eugene Street	1905	Vernacular	Secondary	127
1215	Eugene Street	1909	Vernacular	Contributing	128
1216	Eugene Street	1910	Vernacular	Secondary	129
419	Front Street	1911	Bungalow	Secondary	130

Complete Listing

607	Hazel Street	1909	Colonial Revival	Primary	131
615	Hazel Street	1903	Queen Anne	Secondary	132
719	Hazel Street	1900	Vernacular	Secondary	133
724	Hazel Street	1937	Vernacular	Primary	134
801	Hazel Street	1904	Vernacular	Secondary	135
1214	Lincoln Street	1930	Bungalow	Contributing	137
601	Oak Street	1895	Queen Anne/Vernacular	Primary	138
602	Oak Street	1898	Vernacular	Primary	139
610	Oak Street	1909	Vernacular	Secondary	140
613	Oak Street	1909	Dutch Colonial Revival	Primary	141
724	Oak Street	1906	Craftsman	Secondary	142
725	Oak Street	1904	Stick	National Reg.*	143
801	Oak Street	1900	Vernacular/Queen Anne	Contributing	144
802	Oak Street	1909	Craftsman	Primary	145
805	Oak Street	1908	Vernacular	Secondary	146
810	Oak Street	1909	Bungalow	Primary	147
811	Oak Street	1906	Colonial Revival	National Reg.	148
814	Oak Street	1907	Craftsman	Secondary	149
815	Oak Street	1902	Vernacular/Queen Anne	Contributing	150
821	Oak Street	1901	Queen Anne	Primary*	151
902	Oak Street	1911	Bungalow	Primary	152
903	Oak Street	1913	Craftsman	Primary*	153
906	Oak Street	1908	Bungalow	Secondary	154
910	Oak Street	1908	Bungalow	Secondary	155
911	Oak Street	1907	Craftsman	Primary	156
918	Oak Street	1909	Colonial Revival/Bungalow	Secondary	157
921	Oak Street	1926	Bungalow	Secondary	158
923	Oak Street	1929	English Cottage	Primary	159
1001	Oak Street	1918	Bungalow	Primary	160
1002	Oak Street	1911	Bungalow	Primary	161
1020	Oak Street	1923	Bungalow	Contributing	162
1024	Oak Street	1923	Bungalow	Contributing	163
1203	Oak Street	1911	Bungalow	Secondary	164
1213	Oak Street	1911	Craftsman	Primary*	165
3	Serpentine Street	1910	Bungalow/Craftsman	Secondary	167
224	Serpentine Street	1905	Vernacular	Secondary	168
308	Serpentine Street	1910	Vernacular	Contributing	169
1	East Sherman Avenue	1907	Vernacular	Primary	170
3	East Sherman Avenue	1908	Queen Anne	Secondary	171
4	East Sherman Avenue	1910	Vernacular	Secondary	172
6	East Sherman Avenue	1911	Vernacular	Contributing	173
8	East Sherman Avenue	1911	Vernacular	Secondary	174
9	East Sherman Avenue	1900	Vernacular	Secondary	175
111	East Sherman Avenue	1899	Vernacular	Contributing	176

Complete Listing

201	East Sherman Avenue	1912	Bungalow	Secondary	177
210	East Sherman Avenue	1910	Vernacular	Contributing	178
215	East Sherman Avenue	1898	Queen Anne/Vernacular	Primary	179
311	East Sherman Avenue	1925	Bungalow	Contributing	180
102	Sherman Avenue	1908	Vernacular	Contributing	181
137	Sherman Avenue	1905	Vernacular	Contributing	182
303	Sherman Avenue	1910	Vernacular	Primary	183
311	Sherman Avenue	1892	Vernacular	Primary*	184
403	Sherman Avenue	1908	Queen Anne	Primary	185
411	Sherman Avenue	1921	Bungalow	Primary	186
417	Sherman Avenue	1920	Bungalow	Secondary	187
603	Sherman Avenue	1907	Craftsman	Secondary	188
703	Sherman Avenue	1909	Vernacular	Primary	189
706	Sherman Avenue	1900	Queen Anne/Vernacular	Secondary	190
707	Sherman Avenue	1905	Vernacular	Secondary	191
715	Sherman Avenue	1908	Vernacular	Secondary	192
719	Sherman Avenue	1900	Vernacular	Secondary	193
725	Sherman Avenue	1904	Queen Anne/Vernacular	Primary	194
727	Sherman Avenue	1909	Colonial Revival	Primary	195
805	Sherman Avenue	1908	Craftsman/Classic Box	Primary	196
817	Sherman Avenue	1939	Vernacular/Bungalow	Contributing	198
825	Sherman Avenue	1936	English Cottage/Vernacular	Secondary	199
911	Sherman Avenue	1909	Queen Anne/Vernacular	Primary	200
914	Sherman Avenue	1921	Bungalow	Primary	201
1001	Sherman Avenue	1905	Vernacular/Queen Anne	Secondary	202
1002	Sherman Avenue	1903	Vernacular/Queen Anne	Primary	203
1006	Sherman Avenue	1925	Dutch Colonial	National Reg.	204
1009	Sherman Avenue	1912	Craftsman	Primary	205
1101	Sherman Avenue	1909	Colonial Revival/Craftsman	Primary	206
1116	Sherman Avenue	1923	Colonial	Primary	207
1209	Sherman Avenue	1907	Vernacular/Queen Anne	Secondary	208
1215	Sherman Avenue	1909	Vernacular	Secondary	209
1231	Sherman Avenue	1905	Queen Anne/Vernacular	Contributing	210
5, 9	East State Street	1945	Commerce/Moderne	Secondary	211
11	East State Street	1910	Craftsman/Classic Box	Primary	212
21	East State Street	1905	Craftsman/Classic Box	Secondary	213
23	East State Street	1920	Vernacular	Contributing	214
111	East State Street	1910	Vernacular/Bungalow	Secondary	215
1	State Street	1903	Queen Anne/Vernacular	Primary*	216
612	State Street	1912	Gothic	Primary	217
621	State Street	1902	Queen Anne	Primary*	218
705	State Street	1912	Queen Anne/Bungalow	Primary	219
715	State Street	1910	Bungalow/Vernacular	Primary	220
719	State Street	1903	Dutch Colonial Revival	Primary*	221
721	State Street	1910	Bungalow/Craftsman	Primary	222
724	State Street	1910	Bungalow	Secondary	223

Complete Listing

728	State Street	1911	Vernacular/Bungalow	Secondary	224
803	State Street	1909	Bungalow	Primary	225
805	State Street	1901	Vernacular	Secondary	226
814	State Street	1905	Vernacular	Primary	227
824	State Street	1926	Bungalow	Secondary	228
903	State Street	1900	Gothic	Primary	229
904	State Street	1907	Bungalow	Primary	230
905	State Street	1905	Vernacular	Primary	231
912	State Street	1908	Craftsman/Vernacular	Primary	232
914	State Street	1908	Bungalow	Primary	233
915	State Street	1920	Bungalow	Secondary	234
921	State Street	1912	Bungalow	Primary	235
922	State Street	1903	Colonial	Contributing*	236
1005	State Street	1932	English Cottage/Vernacular	Primary	237
1015	State Street	1912	Bungalow	Secondary	238
1022	State Street	1903	Bungalow	Primary	239
1022	State Street	1900	Utilitarian	Primary	240
1025	State Street	1930	Bungalow	Secondary	241
1029	State Street	1907	Colonial Revival	National Reg.*	242
1100	State Street	1937	Mediterranean	National Reg.*	243
1203	State Street	1906	Vernacular	Primary	244
1204	State Street	1928	Bungalow	Secondary	245
1206	State Street	1915	Bungalow	Contributing	246
1209	State Street	1913	Arts & Crafts	National Reg.*	247
1223	State Street	1905	Queen Anne/Vernacular	Secondary	248
1227	State Street	1910	Craftsman	Contributing	249
307	East Second Street	1908	Vernacular	Contributing	272
409	East Second Street	1935	Bungalow	Contributing	273
415	East Second Street	1903	Vernacular	Contributing	274
423	East Third Street	1901	Vernacular	Secondary	275
424	East Third Street	1915	Bungalow	Contributing	276
522	East Third Street	1929	English Cottage	Primary	277
525	East Third Street	1926	Bungalow	Contributing	278
512	East Fourth Street	1904	Queen Anne	Primary	279
516	East Fourth Street	1925	Bungalow	Contributing	280
523	East Fourth Street	1900	Vernacular	Primary	281
410	Seventh Street	1908	Vernacular	Secondary	250
516	Seventh Street	1909	Craftsman/Classic Box	Secondary	251
318	Ninth Street	1898	Queen Anne	National Reg.*	252
406	Ninth Street	1900	Vernacular/Queen Anne	Contributing	253
407	Ninth Street	1906	Vernacular/Queen Anne	Primary	254
410	Ninth Street	1940	Tract	Contributing	255
508	Ninth Street	1907	Vernacular	Secondary	256

Complete Listing

7	Tenth Street	1925	Bungalow	Contributing	258
412	Tenth Street	1912	Vernacular/Bungalow	Contributing	259
416	Tenth Street	1912	Vernacular	Contributing	260
409	Eleventh Street	1924	Bungalow	Contributing	261
420	Eleventh Street	1925	Vernacular/Gothic	Primary*	262
402	Twelfth Street	1920	Bungalow	Secondary	263
410	Twelfth Street	1910	Vernacular	Contributing	264
411	Twelfth Street	1907	Vernacular	Secondary	265
422	Twelfth Street	1909	Craftsman/Classic Box	Secondary	266
204	Thirteenth Street	1940	Vernacular	Secondary	267
224	Thirteenth Street	1877	Gothic Revival	Primary	268
406	Thirteenth Street	1940	Vernacular	Contributing	269
410	Thirteenth Street	1940	Vernacular	Contributing	270
504	Thirteenth Street	1903	Vernacular	Contributing	271
	Second Street	1905	Stairs	Primary	282
	Ninth Street	1905	Stairs	Primary	283
	Oak Street	1910	Rock Wall	Primary	284
	State Street	1910	Rock Wall	Primary	285
	Ninth Street	1913	Rock Wall	Primary	286

* In Comprehensive Plan

Observations

The residential area in the Phase II (August 1992) study area has a high concentration of significant buildings. There are 239 resources cited in the 1992 study. The study area surrounds the downtown and, historically, was the first residential area to develop. A large number of the oldest structures in Hood River are located throughout the study area. These early residences depict various periods of development from the early Settlement Era through WWII. Many of the prominent business people resided in these houses, particularly on State and Oak streets. All the buildings in the study area with the exception of a 1940s commercial building, and a spring house are residential in character.

The following observations depict the buildings included in the inventory, not the total number of buildings in the study area. Not all the buildings in the study area are listed in the historic inventory.

The earliest building in the study area dates from about 1877 (224 Thirteenth Street). There are only ten properties dating from the 1800s (see Appendix B). The majority of these buildings date from the 1890s. These properties depict the early settlement period of Hood River when the town was newly incorporated. The population in 1890 was 201. The most prevalent styles during this period were the Queen Anne and Vernacular styles. One of these buildings (318 Ninth Street) is listed in the National Register of Historic Places and seven are listed as Primary resources.

There are twenty-eight properties dating from 1900 to 1904. This period marks the time when the fruit and timber industries were gaining notoriety throughout the northwest. The population at the turn of the century was 622; the population more than tripled from 1890 to 1900. The majority of the buildings during this period reflect the Vernacular style with some elements of the Queen Anne and Colonial Revival styles. There is one example of the Stick Style (725 Oak Street); the building is listed in the National Register. Twelve of these buildings are Primary resources.

The next period, 1905 to 1909, marks the years of tremendous growth in the Hood River Valley. The population increased from 622 people in 1900 to 2,500 in 1908. The fruit industry gained national recognition, becoming known for its excellence. Many eastern investor and horticulturists were moving to the Hood River Valley to invest in the fertile valley land. The timber and tourism industries also grew as people from all over the United States visited Hood River. Seventy-one buildings were constructed during this period in the inventory with the largest concentration being built on Sherman Street (17 buildings). Twelve were built on Oak Street, eight on State and Columbia streets. The most prevalent style was the Vernacular style with some Colonial Revivals, Craftsmans, and Bungalows. There are two National Register buildings in this time period (811 Oak and 1029 State) and 29 Primary buildings.

Fifty-four buildings were constructed from 1910 to 1915. The fruit industry continued to grow as did the number of people moving to Hood River. Nearly one-half of these buildings were designed with elements of the Bungalow style. Other styles include the Craftsman, Classic Box, Vernacular, Arts and Crafts, and Colonial Revival. There is one National Register building (1209 State) and 21 Primary buildings from this period.

From 1915 to after WWI, the building boom slowed as did the population. In 1917, the population of Hood River was 2,700, only 200 more people than in 1908. Twelve buildings were built during this time period that are listed in the inventory. Ten of those buildings were designed with elements of the Bungalow style. The other two styles represented are the American Renaissance and the Greek Revival styles. Both of these buildings are public buildings. Seven of these resources are Primary.

From 1920 to 1929, only 45 buildings were built in the study area which are included in the inventory. The large majority of the buildings were designed in the Bungalow style. Other styles represented include the Dutch Colonial, the Colonial, English Cottage and Craftsman. There is one National Register property in this group and twelve Primary resources. These buildings were constructed in all areas.

The period between 1930 and 1945 indicate a decrease in building, primarily because of the lack of buildable land and the Great Depression. Only nineteen buildings were constructed. These building represent the Bungalow, and English Cottage styles; the majority of the designs. Other styles depicted during this time period were the Norman farmhouse and Mediterranean styles. There is one National Register building in this group and seven Primary buildings.

The residential buildings in the study area show a good cross-section of the various styles found in Hood River. The buildings reflect the building trends and the economy of the city historically and represent some of the oldest resources in the city limits. Out of a total of 239 resources in the historic inventory, there are seven National Register buildings, 95 Primary resources, 79 Secondary resources, and 58 Contributing resources. The highest number of Primary resources was on State Street followed by Sherman, Oak, and Columbia streets.

The two public stairways located at Second and State street, and Ninth and Eugene streets are included in the inventory as Primary resources. The retaining wall along Oak, State, and Ninth streets are also included in the inventory as cultural landscape features. These walls are Primary resources.

Treatment Strategies/Recommendations

The development of treatment strategies is based on the need to prepare preservation plans to insure the protection of the historic resources. Treatment activities must be built upon broad foundations of support from local governments, governing agencies and state planning levels. Treatment strategies for inventories properties should be integrated into a comprehensive cultural resource management plan. The following recommendations are preservation strategies which will assist the City of Hood River in achieving their goals and priorities.

1. National Register of Historic Places: Encourage individual National Register nominations. Each National Register property could serve as a valuable interpretive resource that would benefit Hood River and serve as a guide for future preservation programs.
2. The City of Hood River Historic Resource Inventory and subsequent historic inventories will be constantly changing as new information is discovered. It will require regular updating and review. Resources that are not included in the inventory may be included at a future time, and others may be removed if they no longer meet the eligibility requirements.
3. Continue to solicit grant monies for matching grants from the SHPO to complete an intensive level historic inventory for all resources within the UGB and city limits.
4. Utilize the information in the 1988 and 1992 Hood River Cultural Resource Inventory to develop strategic plans and programs specifically in the areas of community and economic development, planning, tourism, marketing, promotional and special events.
5. Establish a Downtown National Register Historic District. Downtown Hood River retains a high number of significant building dating from the Progressive Age and Motor Era. The establishment of a district will provide some level of protection for the historic buildings along with drawing tourism year around to the area. Historic Districts also instill a sense of pride in the surrounding environment and often encourage revitalization and rehabilitation of the buildings in the district.
6. Delineate other potential residential National Register Districts from information compiled in the 1992 Cultural Resource Inventory.
7. Establish a Historic Landmarks Commission and develop a Historic Preservation Ordinance. The local Landmarks Commission would be responsible for developing goals and objectives for the protection of local resources as well as developing a local Preservation Ordinance.
8. Encourage adaptive reuse of vacant building. Adaptive reuse is an appropriate alternative as long as the character defining features of the resource remain intact. Adaptive reuse of the cannery buildings and cold storage buildings may be appropriate. Encourage the support for rehabilitation of significant buildings in the study area.

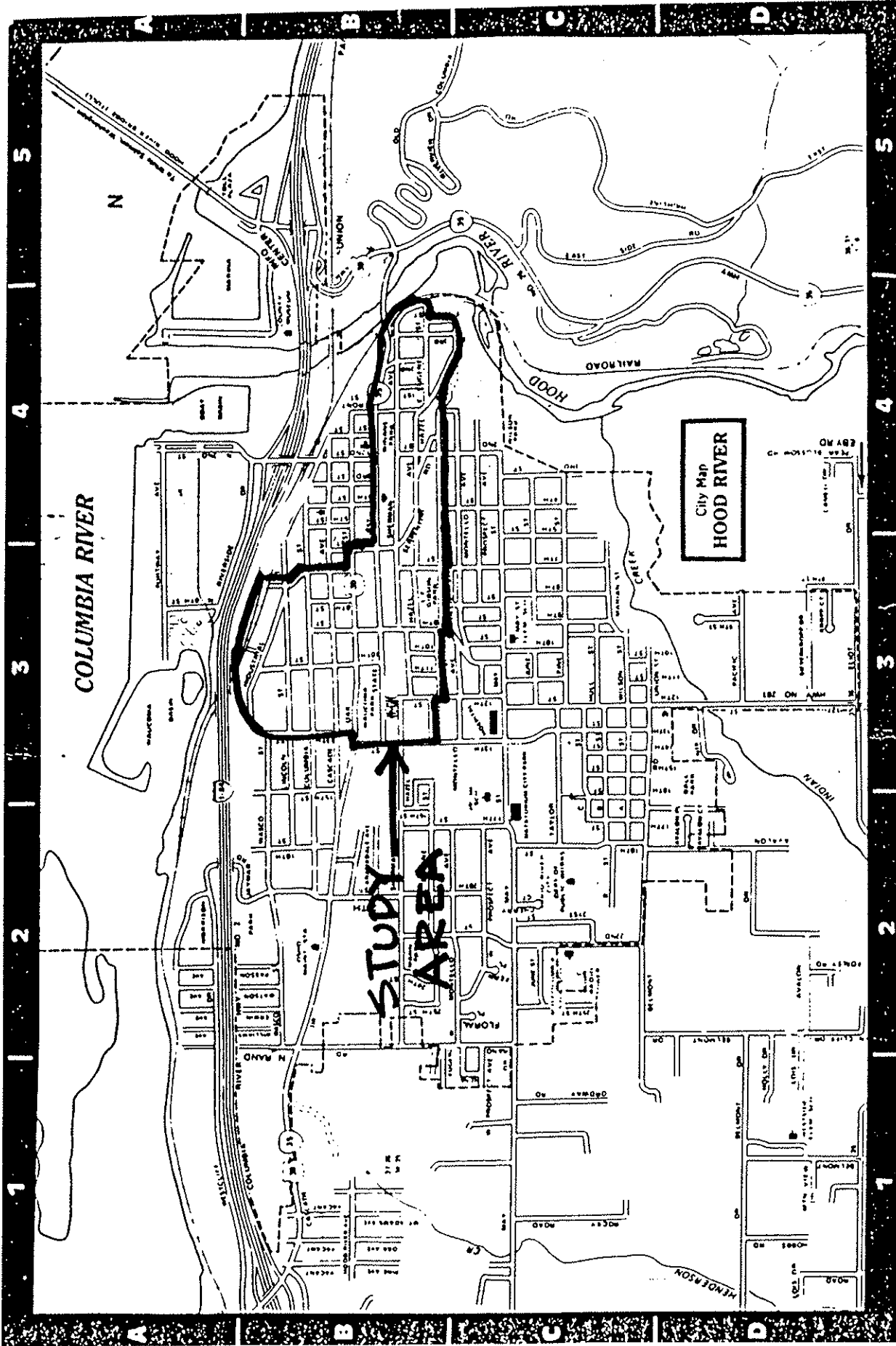
9. **Public Awareness/Education:** Encourage the distribution of informational material such as brochures and flyers to increase the public's awareness about the value of the historic resource in the community. Encourage local historical societies to organize interpretative displays or develop walking tours of the historic resources in the area. Conduct public workshops for property owners for appropriate rehabilitation techniques.

10. Encourage the development of a comprehensive tourism development plan for significant historic buildings.

11. Support the use of federal tax credits for rehabilitation of income producing properties.

12. Encourage property owners of National Register properties to consider making application for the Oregon Special Assessment Program which allows owners to freeze property taxes for a fifteen year period.

Appendix A



Hood River City Map

HISTORY OF HOOD RIVER, OREGON

The community of Hood River lies at the foot of an extremely scenic and fertile valley with majestic Mount Hood rising dramatically South of town and Mt. Adams to the north. The city is surrounded by thick forests and sparkling streams. The city was built and developed near the confluence of the Columbia and Hood Rivers at an elevation of 103 feet above sea level.

Originally the area had been inhabited by a small Indian village which was noted when the Lewis and Clark expedition passed the area on October 29, 1805, on their way to the Pacific Ocean. There are few reminders of the native Americans who roamed through the area for centuries before the pioneers arrived. At one time, several small Indian camps lined the Columbia River. A favorite camp site was under the large cottonwood trees, located near the mouth of the river called Waucoma, or "place of the big trees." While Lewis and Clark were camped in this area, they also discovered Waucoma stream that is known today as the Hood River formerly referred to as Dog River .

Dog River received its name from an unusual event. A herd of cattle were being driven to the river at dusk. The cattle were on one side of the river and a party of men responsible for the cattle were camped on the other side of the river. During the night, heavy rains fell and the river rose so high that the men could not cross the stream to retrieve their cattle. The rain continued for several more days. The men ran out of food and out of desperation they were compelled to kill their old dog, Towser. It wasn't until later, that Mrs. Nathaniel Coe, an early pioneer resident of the valley, objected to the name Dog River and changed it "Hood Vale, and finally to "Hood River." Hood River was named after Mount Hood, the source of the water supply to the pioneer families.

The early pioneers who passed through the Hood River area were following the Oregon Trail. They did not settle in the area. Most of the travellers were on their way to the Willamette Valley, either by rafts floating down the Columbia River or by wagon, following the Barlow Toll Road from The Dalles to Oregon City, Oregon.

Among the first settlers of prominence was the Nathaniel Coe family. Coe was appointed by President Millard Fillmore as a special postal agent for the U.S. government in the Oregon Territory in 1851. When the presidency changed, Coe chose to stay in the west. He sent for his wife, who was living in New York, to come and join him. While she made plans to join him in Oregon, he took out a Donation Land Claim in the valley of Dog River in June of 1854. Coe was accompanied on this trip by his son, E.F. Coe, William Jenkins, and his brother-in-law, Nathan Benson, from Auburn, New York. Soon, other friends of the Coe's joined them and the area began to develop and grow.

When Mary Coe arrived, she and Nathaniel initially lived with friends, but soon built their new home in what is known today as "the heart of the City of Hood River," between 11th and 12th, below State Street. Their home was very humble, measuring approximately 20 ft. by 40 ft. . It was one large room without any partitions, ceilings, cloth, or paper. A cabin belonging to Judge Laughlin, the first settler in 1852, was found on the Coe homestead. (McLaughlin only spent one winter in the Hood River area. He lost all his cattle during the severe winter of 1852 and moved back to the Dalles.)

The Coe's began to develop the area. They planted large orchards and vegetable gardens on their land and began to raise farm animals. Within the next five years the Coe home became known as the center of the community. It served as a courthouse, church, and funeral parlor for many years.

Nathaniel Coe's success in the area attracted more settlers. Soon other pioneers began to move into the valley to start their own businesses. The first farms in the valley were located on the lower west side near the creek. The community was very isolated with only a trail along the Columbia River connecting Portland and Walla Walla, Washington with Hood River. In 1862 the first wagon road from The Dalles to Hood River was constructed.

The first election was held in 1862 in the Coe home. Eleven men cast their ballots. Growth in the Hood River Valley area was initially slow with only 23 homes and a total of 85 people recorded in the 1870 Territorial census. In 1868 Nathaniel Coe died at 80 years of age.

Pioneers continued to move into the valley. Peter Neal built a sawmill near the creek named after him. The first oxen pulled wagon arrived in 1862 after coming into the valley via a rugged trail from The Dalles. The arrival of the Mansfield Pacific Colony in 1875 necessitated the building of the first Belmont Methodist Church in Hood River in 1878. Eight years later the First Congregational Church under the leadership of Reverend Frederic Homer Balch, was built to serve the growing church community. Rev. Balch wrote his famous novel, "Bridge of the Gods" while living here and ministering to the people.

By 1880, businessmen in the valley began to talk about the prospect of building a railroad through the Columbia Gorge. This was important in order to stimulate development in the area, and to alleviate the isolation of Hood River from the major cities. Train service to Hood River from Portland would reduce travel time to three hours, compared to five hours by stage.

In anticipation of new development spurred by the coming railroad, Frank and Henry Coe platted four blocks of their pasture, located above the railroad depot, for future development. They generously offered free land to those who promised to build on the property. John Parker built a two story store and home at 1st and Oak streets. Immediately, commercial buildings were built in this area, including the Mt. Hood Hotel, located next to the railroad depot. The first Oregon Railroad and Navigation Company train arrived at the town site on November 20, 1882. Soon river steamers began to service the city regularly. The community began to prosper. Large numbers of excursionists began to travel to Hood River to enjoy the moderate climate and escape the hot summer months in other parts of the country.

About the same time, Henry Coe realized the importance of education for the local children. In 1883, he donated a parcel of his property to build a school. It was located on the site of the present county courthouse. The first class to graduate after attending all twelve grades in the school was in 1906.

Soon, more changes occurred in the community. The first store building was erected and occupied by the mercantile house of Bone and McDonald. The second building erected in town was the Mt. Hood Hotel by T.J. Hosford, in the latter part of 1881. The Hood River Glacier weekly newspaper started in 1889. Cloud Cap Inn was built the same year on the north side of Mount Hood. The township was laid out in March, 1881, by H. C. Coe on the donation land claim of his father.

The first residence was built by John P. Hilsteon; the second home by Judge George T. Prather. Peter Tanners residence was build subsequently. Next a store was built by Mrs. Jennie Champlain, and occupied by Blodgetts Harness shop. This was followed by E.L. Smiths store in 1882, Prathers building, and the Rank building The Rank building

was occupied by A.S. Blowers and Sons. Other buildings in town were the O.R.& N. Railroad depot and the school.

By 1889 Hood River had its own newspaper. The Hood River Townsite Company was incorporated in 1891.. On February 19,1895 Hood River was formally incorporated. C. M. Wolford was the first mayor. The City had a population of 622 in 1900 and grew to 1,751 in 1905 . Hood River was soon becoming known as a regional trading center with the railroad, wagon roads, and boats on the Columbia all commuting to the city. Settlers living in the valley began to depend upon commercial trade related to lumber, cattle, and cordwood, Trade became necessary in order to obtain clothing and food, because no commercial industry had been built in the area. Later, a steam ferry began operation across the Columbia River and brought additional trade to Hood River from central Washington.

Most of the early pioneers who came to Hood River migrated from the mid-western area of the United States. They were primarily familiar with farming activities. The farmers observed the success that the Coe family was having raising fruit and planting orchards and soon began to integrate these ideas into their farming techniques. More lands were planted into orchards. Dog River peaches became the first commercial fruit venture, primarily aimed at the steamer or train passengers.

In the 1880's and 1890's, apples and other fruits were planted in the valley. People living on the lower west side near Dog River began selling more peaches and other fruits to passengers who travelling to Hood River.. Soon, other settlers living on the east side of town began to plant apple trees. Peter Mohr planted 43 varieties of apples in his Pine Grove orchard which contained a total of 400 apple trees. Thomas Coon planted strawberries in 1885. The berries grew so beautifully that soon the first large commercial

shipment of fruit left Hood River by railroad to distant markets. In response to the increasing demand for Hood River fruit, Mr. Coon and a group of business partners incorporated in 1893 and formed the Hood River Fruit Growers Union, the first farmers cooperative in the Pacific Northwest.

Apples, strawberries, and other fruits were planted in the valley in the 1880's and 1890's. An unsuccessful business venture by Franklin Davenport created the farmers ditch. It was eleven miles long and brought water into the valley for the irrigation of orchard lands. Land prices soared. The new water system permitted the growth of large crops and the increased shipment of huge quantities of fruit from the valley. The fruit industry continued to established the community's identity. Many fruit related businesses flourished. Completion of the government locks at the Cascades in 1896, eliminated the need for portage railroads which had previously delayed shipment of fruit to Portland and other areas.

Between 1900 and 1911, the apple industry developed. Profitability led to soaring land prices. The Hood River newspaper of 1909 stated that fruit lands could be purchased for \$50-\$150 per acre, with bearing orchards running \$800-\$1500 per acre. It was estimated that profits ran \$500-\$1000 per acre. Fruit buyers came to the area, rival cooperative's were organized, and warehouses were were built near the railroad. By the early 1900s, Hood River was known for producing the "finest apples in the world." In 1906, the Mt. Hood Railroad was completed. This meant that that passengers and fruit now had a dependable source of transportation through the valley. More storage and packing houses were built along the railroad line. In 1919 an extremely severe freeze killed many of the apple trees. Many of the apple orchards were replanted with pear trees..

A promotional article in the July 14th, 1899, Hood River Glacier lists the following information about Hood River: "It has a stable government with the largest lumbering mill in the state, producing over 100,000 ft. of lumber per day. In addition, there are 2 hotels, an Armory Hall, 2 restaurants, private boarding and lodging houses, 2 livery stables, a weekly newspaper, the Fruit Growers Union, fruit cannery, a ferry, 4 general stores, 2 drug stores, 3 churches, 2 hardware stores, 2 furniture stores, 2 harness shops, 2 meat markets, 2 confectioneries, 2 bakeries, a box factory, racket store, grocery, photograph gallery, billiard room, barber shop, shoe shop, queensware crockery and stationery store, 2 laundries, a band, a blacksmith, and 2 real estate agencies. The professions were represented by a dentist, 2 physicians, and 2 attorneys."

The community was very proud that there was no saloon in Hood River. The high school had six rooms with a principal, Mr. C.D. Thompson, and four additional teachers. School was taught eight months of the year and 154 students were enrolled.

Initially, Hood River had a gravity system of water from a spring located 250 ft. above the town. The water was said to be the purest and best in the land. Before electricity was developed, there had been 9 individual acetylene gas plants in operation. Hood River Electric Light & Power company started in 1901. The fire department was organized in 1904 and the Home Telephone Company started service in 1907.

In 1905 the Lewis and Clark Exposition in Portland created further interest in Hood River fruit industry, when most of the medals awarded for quality fruit, went to the local farmers in the Hood River area. During the fair, special sight-seeing trips by train and boat brought thousands of visitors to the area during the four months of the fair. Visitor accommodations developed in the form of summer resorts. The best known of these were the Cottage Farm of Alma Howe on Belmont road, the Country Club Inn below west

Cascade Avenue, Bobby Rand's and the Wah-gwin Gwin Hotel, near the waterfall where the Columbia Gorge Hotel is located today.

The beauty of the valley and the attraction of good soil and produce, soon drew other ethnic groups into the valley . As early as 1896, pioneers of Finnish ancestry began to farm in the Oak Grove area. Not only did they bring a strong work ethic, but they brought the joy of their music, their love of dancing, and appreciation of arts to the people of Hood River. The Finnish people have continued to be involved in the civic and cultural enrichment of the Valley.

The Japanese first came in 1903 to work in the lumber mills. By 1905, Taiki Kuma had opened the Miguma Variety Store on the northeast corner of First and Oak Streets.. Three years later, the Yasui brothers from Portland moved to Hood River and purchased the store. Mr. Yasui became the respected leader of the Japanese who remained in the valley. The 1910 U.S. Census recorded 468 Japanese and six Chinese in Hood River County. In 1911 there were eight Japanese-owned farms in the valley. The Japanese were very hard working but still found time to participate in community events. Yasui continued to operate his store, participate in local events, and was the first Japanese elected to the A.G.A. board of directors in 1931.

In 1913-1914 the Apple Growers Association of Hood River was formed. It was the result of several marketing organizations consolidating under one name. Later it became Diamond Fruit Growers, Inc. The growth and development of the fruit industry gave the community an economic base to compliment the existing timber industry.

The Columbia River Highway was completed to Portland in 1916 and to The Dalles in 1922. This great development in transportation eliminated the isolation of Hood River

from other cities. The Columbia River Highway, now listed on the National Register of Historic Places, offered one of the most beautiful trips along the Columbia River. It was the first time that people in Hood River could commute by car from one place to another. Hood River had finally come of age.

It was about this time that the peak years of development in Hood River began to diminish. This was partially due to the opening of the Panama Canal, which meant lower shipping costs on apple exports. With the advent of World War I, the foreign market demand for fruit was lost. Fortunately, this was balanced by a strong increase in the domestic fruit market. The Apple Growers Association recorded their most successful year in 1918.

Terrible winter weather in December, 1919, killed thousands of fruit trees. More bad weather during the 1920s resulted in many of the orchard plantings being replaced with hardier apple stock or with pears. This created a financial hardship for many businessmen and families in the fruit industry.

Advances in the transportation industry further opened up the Hood River area for development. The Hood River-White Salmon bridge opened in 1924, replacing the Columbia River ferry system. The Mount Hood Loop Highway, also completed in 1924, was opened up the first roadway to the west. Simon Benson opened the Columbia Gorge Hotel in 1921, which attracted more visitors to the area. The retail trade center of Hood River continued to develop. Visitors were attracted to come and visit from longer distances and they continued to enjoy all the variety of attractions in the Hood River Valley.

All of these elements contributed to the city developing as a regional trade center. In 1938 the Bonneville Dam and Locks were completed which greatly improved the river transportation system but altered the Columbia River waterfront. World War II resulted in Japanese residents being sent to internment camps, creating shock in the community as the Japanese were forced to leave their farms. In 1948, a water grade level freeway built through the Columbia Gorge greatly shortened the driving time to Portland from Hood River. In 1954 a new courthouse was built.

The city of Hood River has grown more methodically since the early boom days. Population in 1940 was 3,280. By 1950 the City's population had grown to 3,701 but then fell in the 1960's to 3,657. The town grew slowly to 3,991 in 1970 and it was estimated that in 1986 a total 4,520 residents are living within the city limits.

The Port of Hood River was created in 1938 as a result of the Bonneville Dam project. Its purpose was to develop industrial lands in the Columbia River Basin. The Port did not become active until 1950 when it purchased the Hood River/White Salmon Interstate Toll Bridge. Since then the Port has been involved in the development of industry and recreational activities in an attempt to bring people back to the river. The Hood River County Historical Museum was built on Port donated land and is an excellent complex for interpreting and preserving the history of Hood River and the surrounding area.

Hood River has historically been recognized as a center of the fruit industry. Since the 1980's several other light manufacturing activities have come to the City. The closure of the Diamond Fruit Cannery in 1983 and the Jantzen plant in 1987 was a temporary blow to the employment and economy of Hood River. However, Hood River has continued to develop as a retail trade center for people living on both sides of the Columbia River. A recent phenomenon is the development of the tourism industry based upon the promotion

of wind surfing and sail boarding in the Columbia Gorge. Hood River has now become a nationwide center for the windsurfing industry.

The expansion of the city's economic base is apparent. Over 80 new businesses opened in the area during 1985 and 1986. United Telephone Company of the Northwest has made Hood River its headquarters. A reuse project for the old Diamond Cannery is being studied and lodging facilities along the Columbia River are being expanded. The economic base is being diversified to attract new manufacturing enterprises. It is doubtful that the traditional industries of agriculture and timber will expand.

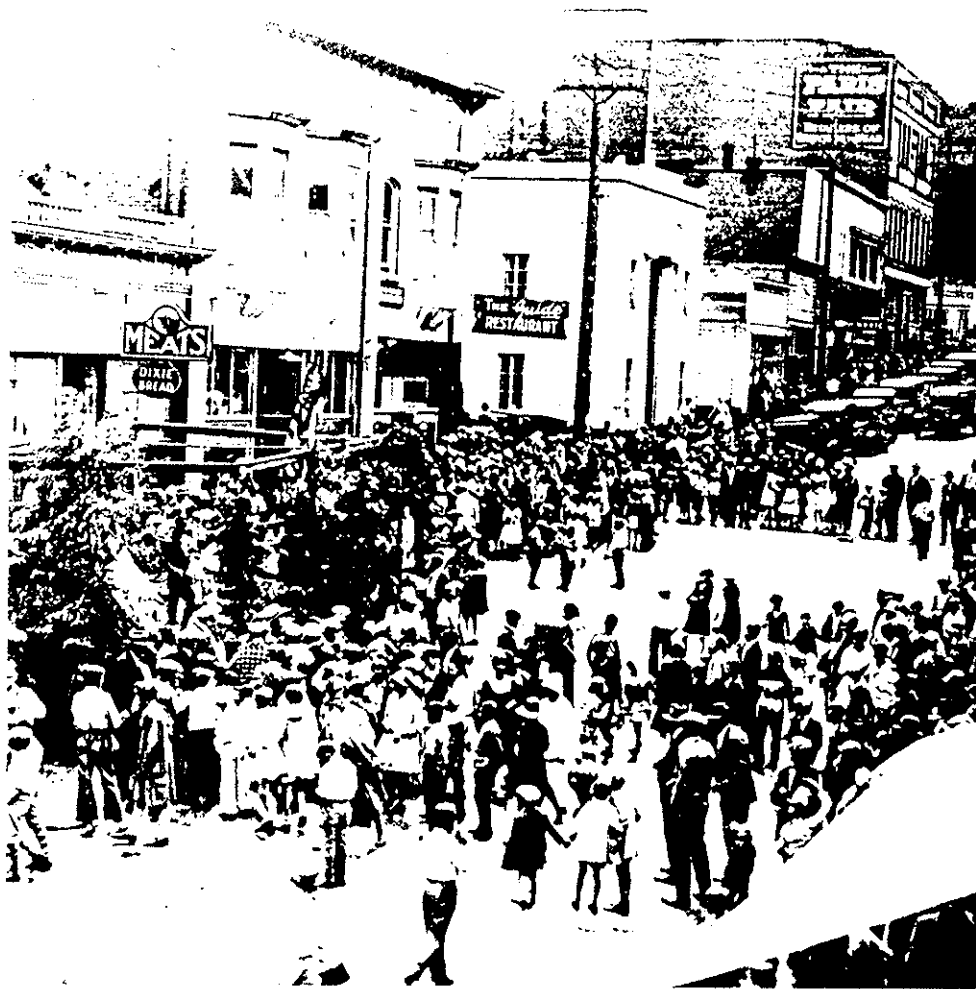
Sail boarding and the natural beauty of the area will encourage the City of Hood River to expand their tourist industry. There is a new sense of excitement in the community. Homes are being renovated, the real estate market is expanding, and new businesses are opening each month. The fruit and lumber economy continue to give identity to this beautiful community in the heart of Oregon's Cascade Mountains as it plans for the Hood River of tomorrow.



The I.O.O.F. Hall/ Paris Fair Building, 4th and Oak Str., ca. 1900



The Davidson Fruit Company Building, ca.1907



Looking west on Oak Street at Third Street, CA. 1930

Appendix B

	Address	Date	Style	Rank	SHPO #
224	Thirteenth Street	1877	Gothic Revival	Primary	268
311	Sherman Avenue	1892	Vernacular	Primary*	184
721	Cascade Street	1895	Queen Anne/Vernacular	Primary	42
809	Columbia Street	1895	Vernacular	Secondary	79
601	Oak Street	1895	Queen Anne/Vernacular	Primary	138
613	Cascade Street	1896	Vernacular	Primary	40
215	East Sherman Avenue	1898	Queen Anne/Vernacular	Primary	179
318	Ninth Street	1898	Queen Anne	National Reg.*	252
602	Oak Street	1898	Vernacular	Primary	139
111	East Sherman Avenue	1899	Vernacular	Contributing	176
814	Cascade Street	1900	Vernacular	Secondary	48
911	Cascade Street	1900	Vernacular/Colonial Revival	Primary	54
523	East Fourth Street	1900	Vernacular	Primary	281
9	East Sherman Avenue	1900	Vernacular	Secondary	175
719	Hazel Street	1900	Vernacular	Secondary	133
406	Ninth Street	1900	Vernacular/Queen Anne	Contributing	253
801	Oak Street	1900	Vernacular/Queen Anne	Contributing	144
706	Sherman Avenue	1900	Queen Anne/Vernacular	Secondary	190
719	Sherman Avenue	1900	Vernacular	Secondary	193
903	State Street	1900	Gothic	Primary	229
1022	State Street	1900	Utilitarian	Primary	240
423	East Third Street	1901	Vernacular	Secondary	275
821	Oak Street	1901	Queen Anne	Primary*	151
805	State Street	1901	Vernacular	Secondary	226
815	Oak Street	1902	Vernacular/Queen Anne	Contributing	150
621	State Street	1902	Queen Anne	Primary*	218
415	East Second Street	1903	Vernacular	Contributing	274
615	Hazel Street	1903	Queen Anne	Secondary	132
1002	Sherman Avenue	1903	Vernacular/Queen Anne	Primary	203
1022	State Street	1903	Bungalow	Primary	239
922	State Street	1903	Colonial	Contributing*	236
719	State Street	1903	Dutch Colonial Revival	Primary*	221
1	State Street	1903	Queen Anne/Vernacular	Primary*	216
504	Thirteenth Street	1903	Vernacular	Contributing	271
512	East Fourth Street	1904	Queen Anne	Primary	279
801	Hazel Street	1904	Vernacular	Secondary	135
725	Oak Street	1904	Stick	National Reg.*	143
725	Sherman Avenue	1904	Queen Anne/Vernacular	Primary	194
801	Cascade Street	1905	Queen Anne	Contributing	43
809	Cascade Street	1905	Vernacular	Contributing	46
802	Columbia Street	1905	Craftsman/Classic Box	Secondary	76
1219	Columbia Street	1905	Queen Anne	Primary	108

Date

806	Columbia Street	1905	Vernacular	Secondary	78
814	Columbia Street	1905	Vernacular	Secondary	80
824	Columbia Street	1905	Vernacular	Secondary	83
21	East State Street	1905	Craftsman/Classic Box	Secondary	213
313	Eugene Street	1905	Queen Anne	Secondary	113
1110	Eugene Street	1905	Vernacular	Primary	124
1114	Eugene Street	1905	Vernacular	Secondary	126
1207	Eugene Street	1905	Vernacular	Secondary	127
	Ninth Street	1905	Stairs	Primary	283
	Second Street	1905	Stairs	Primary	282
224	Serpentine Street	1905	Vernacular	Secondary	168
1231	Sherman Avenue	1905	Queen Anne/Vernacular	Contributing	210
137	Sherman Avenue	1905	Vernacular	Contributing	182
707	Sherman Avenue	1905	Vernacular	Secondary	191
1001	Sherman Avenue	1905	Vernacular/Queen Anne	Secondary	202
1223	State Street	1905	Queen Anne/Vernacular	Secondary	248
814	State Street	1905	Vernacular	Primary	227
905	State Street	1905	Vernacular	Primary	231
407	Ninth Street	1906	Vernacular/Queen Anne	Primary	254
811	Oak Street	1906	Colonial Revival	National Reg.	148
724	Oak Street	1906	Craftsman	Secondary	142
1203	State Street	1906	Vernacular	Primary	244
1	East Sherman Avenue	1907	Vernacular	Primary	170
508	Ninth Street	1907	Vernacular	Secondary	256
814	Oak Street	1907	Craftsman	Secondary	149
911	Oak Street	1907	Craftsman	Primary	156
603	Sherman Avenue	1907	Craftsman	Secondary	188
1209	Sherman Avenue	1907	Vernacular/Queen Anne	Secondary	208
904	State Street	1907	Bungalow	Primary	230
1029	State Street	1907	Colonial Revival	National Reg.*	242
411	Twelfth Street	1907	Vernacular	Secondary	265
903	Cascade Street	1908	Bungalow	Primary	51
917	Cascade Street	1908	Bungalow	Contributing	57
923	Cascade Street	1908	Bungalow	Primary	58
1002	Cascade Street	1908	Craftsman	Secondary	61
720	Columbia Street	1908	Craftsman/Classic Box	Primary	74
1015	Columbia Street	1908	Queen Anne	Primary	97
307	East Second Street	1908	Vernacular	Contributing	272
3	East Sherman Avenue	1908	Queen Anne	Secondary	171
1113	Eugene Street	1908	Colonial Revival	Primary	125
717	Eugene Street	1908	Vernacular	Contributing	115
906	Oak Street	1908	Bungalow	Secondary	154
910	Oak Street	1908	Bungalow	Secondary	155
805	Oak Street	1908	Vernacular	Secondary	146
410	Seventh Street	1908	Vernacular	Secondary	250
805	Sherman Avenue	1908	Craftsman/Classic Box	Primary	196
403	Sherman Avenue	1908	Queen Anne	Primary	185

Date

102	Sherman Avenue	1908	Vernacular	Contributing	181
715	Sherman Avenue	1908	Vernacular	Secondary	192
914	State Street	1908	Bungalow	Primary	233
912	State Street	1908	Craftsman/Vernacular	Primary	232
1024	Columbia Street	1909	Vernacular	Contributing	102
1215	Eugene Street	1909	Vernacular	Contributing	128
607	Hazel Street	1909	Colonial Revival	Primary	131
810	Oak Street	1909	Bungalow	Primary	147
918	Oak Street	1909	Colonial Revival/Bungalow	Secondary	157
802	Oak Street	1909	Craftsman	Primary	145
613	Oak Street	1909	Dutch Colonial Revival	Primary	141
610	Oak Street	1909	Vernacular	Secondary	140
516	Seventh Street	1909	Craftsman/Classic Box	Secondary	251
727	Sherman Avenue	1909	Colonial Revival	Primary	195
1101	Sherman Avenue	1909	Colonial Revival/Craftsman	Primary	206
911	Sherman Avenue	1909	Queen Anne/Vernacular	Primary	200
703	Sherman Avenue	1909	Vernacular	Primary	189
1215	Sherman Avenue	1909	Vernacular	Secondary	209
803	State Street	1909	Bungalow	Primary	225
422	Twelfth Street	1909	Craftsman/Classic Box	Secondary	266
1026	Cascade Street	1910	Bungalow	Primary	67
1028	Cascade Street	1910	Bungalow/Vernacular	Contributing	68
705	Cascade Street	1910	Dutch Colonial/Vernacular	Contributing	41
1018	Columbia Street	1910	Arts & Crafts	Primary	99
1019	Columbia Street	1910	Dutch Colonial Revival	Secondary	100
316	East Eugene Street	1910	Vernacular/Bungalow	Contributing	111
4	East Sherman Avenue	1910	Vernacular	Secondary	172
210	East Sherman Avenue	1910	Vernacular	Contributing	178
11	East State Street	1910	Craftsman/Classic Box	Primary	212
111	East State Street	1910	Vernacular/Bungalow	Secondary	215
1216	Eugene Street	1910	Vernacular	Secondary	129
	Oak Street	1910	Rock Wall	Primary	284
3	Serpentine Street	1910	Bungalow/Craftsman	Secondary	167
308	Serpentine Street	1910	Vernacular	Contributing	169
303	Sherman Avenue	1910	Vernacular	Primary	183
724	State Street	1910	Bungalow	Secondary	223
721	State Street	1910	Bungalow/Craftsman	Primary	222
715	State Street	1910	Bungalow/Vernacular	Primary	220
1227	State Street	1910	Craftsman	Contributing	249
	State Street	1910	Rock Wall	Primary	285
410	Twelfth Street	1910	Vernacular	Contributing	264
6	East Sherman Avenue	1911	Vernacular	Contributing	173
8	East Sherman Avenue	1911	Vernacular	Secondary	174
419	Front Street	1911	Bungalow	Secondary	130
902	Oak Street	1911	Bungalow	Primary	152
1002	Oak Street	1911	Bungalow	Primary	161
1203	Oak Street	1911	Bungalow	Secondary	164
1213	Oak Street	1911	Craftsman	Primary*	165

Date

728	State Street	1911	Vernacular/Bungalow	Secondary	224
803	Cascade Street	1912	Bungalow	Secondary	44
1025	Cascade Street	1912	Bungalow	Secondary	66
1001	Cascade Street	1912	Craftsman	Primary	60
1009	Columbia Street	1912	Queen Anne/Craftsman	Primary	96
201	East Sherman Avenue	1912	Bungalow	Secondary	177
1107	Eugene Street	1912	Bungalow	Secondary	123
915	Eugene Street	1912	Colonial Revival/Vernacular	Secondary	119
1009	Sherman Avenue	1912	Craftsman	Primary	205
921	State Street	1912	Bungalow	Primary	235
1015	State Street	1912	Bungalow	Secondary	238
612	State Street	1912	Gothic	Primary	217
705	State Street	1912	Queen Anne/Bungalow	Primary	219
416	Tenth Street	1912	Vernacular	Contributing	260
412	Tenth Street	1912	Vernacular/Bungalow	Contributing	259
907	Cascade Street	1913	Craftsman	Primary	53
1007	Cascade Street	1913	Craftsman/Vernacular	Contributing	62
509	Eugene Street	1913	Bungalow	Contributing	114
903	Eugene Street	1913	Craftsman/Vernacular	Primary	117
914	Eugene Street	1913	Vernacular	Secondary	118
	Ninth Street	1913	Rock Wall	Primary	286
903	Oak Street	1913	Craftsman	Primary*	153
1209	State Street	1913	Arts & Crafts	National Reg.*	247
821	Columbia Street	1914	Bungalow	Contributing	82
916	Columbia Street	1914	Craftsman/Vernacular	Secondary	90
1004	Eugene Street	1914	Bungalow	Secondary	121
1021	Cascade Street	1915	Bungalow	Primary	64
910	Columbia Street	1915	Bungalow	Primary	88
1016	Columbia Street	1915	Bungalow	Primary	98
1206	Columbia Street	1915	Bungalow	Secondary	106
424	East Third Street	1915	Bungalow	Contributing	276
11	Eugene Street	1915	Bungalow	Contributing	112
1206	State Street	1915	Bungalow	Contributing	246
920	Columbia Street	1916	Bungalow	Primary	92
1009	Eugene Street	1916	American Renaissance	Primary	122
823	Eugene Street	1916	Greek Revival	Primary	116
1001	Oak Street	1918	Bungalow	Primary	160
810	Cascade Street	1919	Vernacular/Bungalow	Contributing	47
23	East State Street	1920	Vernacular	Contributing	214
417	Sherman Avenue	1920	Bungalow	Secondary	187
915	State Street	1920	Bungalow	Secondary	234
402	Twelfth Street	1920	Bungalow	Secondary	263
808	Cascade Street	1921	Bungalow	Primary	45
1223	Cascade Street	1921	Craftsman/Vernacular	Contributing	72
411	Sherman Avenue	1921	Bungalow	Primary	186
914	Sherman Avenue	1921	Bungalow	Primary	201
902	Cascade Street	1922	Bungalow	Secondary	50

Date

906	Cascade Street	1922	Bungalow	Secondary	52
916	Cascade Street	1922	Bungalow	Contributing	56
902	Columbia Street	1922	Bungalow	Contributing	85
917	Eugene Street	1922	Vernacular	Contributing	120
803	Columbia Street	1923	Bungalow	Secondary	77
1201	Columbia Street	1923	Bungalow	Secondary	104
1020	Oak Street	1923	Bungalow	Contributing	162
1024	Oak Street	1923	Bungalow	Contributing	163
1116	Sherman Avenue	1923	Colonial	Primary	207
1024	Cascade Street	1924	Bungalow	Contributing	65
801	Columbia Street	1924	Bungalow	Contributing	75
925	Columbia Street	1924	Bungalow	Contributing	95
922	Columbia Street	1924	Bungalow/Mediterranean	Primary	93
409	Eleventh Street	1924	Bungalow	Contributing	261
607	Cascade Street	1925	Bungalow	Primary	39
924	Columbia Street	1925	Bungalow	Contributing	94
917	Columbia Street	1925	Vernacular/Bungalow	Primary	91
516	East Fourth Street	1925	Bungalow	Contributing	280
311	East Sherman Avenue	1925	Bungalow	Contributing	180
420	Eleventh Street	1925	Vernacular/Gothic	Primary*	262
1006	Sherman Avenue	1925	Dutch Colonial	National Reg.	204
7	Tenth Street	1925	Bungalow	Contributing	258
1220	Columbia Street	1926	Bungalow	Secondary	109
1222	Columbia Street	1926	English Cottage	Primary	110
525	East Third Street	1926	Bungalow	Contributing	278
921	Oak Street	1926	Bungalow	Secondary	158
824	State Street	1926	Bungalow	Secondary	228
915	Cascade Street	1927	Bungalow	Primary	55
1222	Cascade Street	1927	Bungalow	Secondary	71
913	Columbia Street	1927	Bungalow	Secondary	89
1023	Columbia Street	1927	English Cottage/Vernacular	Secondary	101
924	Cascade Street	1928	Bungalow	Contributing	59
1204	State Street	1928	Bungalow	Secondary	245
1202	Cascade Street	1929	Bungalow	Secondary	69
522	East Third Street	1929	English Cottage	Primary	277
923	Oak Street	1929	English Cottage	Primary	159
714	Columbia Street	1930	Vernacular	Primary	73
1214	Lincoln Street	1930	Bungalow	Contributing	137
1025	State Street	1930	Bungalow	Secondary	241
909	Columbia Street	1931	English Cottage	Primary	87
1005	State Street	1932	English Cottage/Vernacular	Primary	237
828	Columbia Street	1933	Vernacular/Tudor	Contributing	84
823	Cascade Street	1934	English Cottage	Primary	49
409	East Second Street	1935	Bungalow	Contributing	273
1204	Columbia Street	1936	Norman Farmhouse	Primary	105
825	Sherman Avenue	1936	English Cottage/Vernacular	Secondary	199
1027	Columbia Street	1937	English Cottage	Primary	103

Date

724	Hazel Street	1937	Vernacular	Primary	134
1100	State Street	1937	Mediterranean	National Reg.*	243
817	Sherman Avenue	1939	Vernacular/Bungalow	Contributing	198
410	Ninth Street	1940	Tract	Contributing	255
204	Thirteenth Street	1940	Vernacular	Secondary	267
406	Thirteenth Street	1940	Vernacular	Contributing	269
410	Thirteenth Street	1940	Vernacular	Contributing	270
5, 9	East State Street	1945	Commerce/Moderne	Secondary	211

* In Comprehensive Plan

Appendix C

Style

	Address	Date	Style	Rank	SHPO #
1009	Eugene Street	1916	American Renaissance	Primary	122
1018	Columbia Street	1910	Arts & Crafts	Primary	99
1209	State Street	1913	Arts & Crafts	National Reg.*	247
1022	State Street	1903	Bungalow	Primary	239
904	State Street	1907	Bungalow	Primary	230
903	Cascade Street	1908	Bungalow	Primary	51
917	Cascade Street	1908	Bungalow	Contributing	57
923	Cascade Street	1908	Bungalow	Primary	58
906	Oak Street	1908	Bungalow	Secondary	154
910	Oak Street	1908	Bungalow	Secondary	155
914	State Street	1908	Bungalow	Primary	233
810	Oak Street	1909	Bungalow	Primary	147
803	State Street	1909	Bungalow	Primary	225
1026	Cascade Street	1910	Bungalow	Primary	67
724	State Street	1910	Bungalow	Secondary	223
419	Front Street	1911	Bungalow	Secondary	130
902	Oak Street	1911	Bungalow	Primary	152
1002	Oak Street	1911	Bungalow	Primary	161
1203	Oak Street	1911	Bungalow	Secondary	164
803	Cascade Street	1912	Bungalow	Secondary	44
1025	Cascade Street	1912	Bungalow	Secondary	66
201	East Sherman Avenue	1912	Bungalow	Secondary	177
1107	Eugene Street	1912	Bungalow	Secondary	123
921	State Street	1912	Bungalow	Primary	235
1015	State Street	1912	Bungalow	Secondary	238
509	Eugene Street	1913	Bungalow	Contributing	114
821	Columbia Street	1914	Bungalow	Contributing	82
1004	Eugene Street	1914	Bungalow	Secondary	121
1021	Cascade Street	1915	Bungalow	Primary	64
910	Columbia Street	1915	Bungalow	Primary	88
1016	Columbia Street	1915	Bungalow	Primary	98
1206	Columbia Street	1915	Bungalow	Secondary	106
424	East Third Street	1915	Bungalow	Contributing	276
11	Eugene Street	1915	Bungalow	Contributing	112
1206	State Street	1915	Bungalow	Contributing	246
920	Columbia Street	1916	Bungalow	Primary	92
1001	Oak Street	1918	Bungalow	Primary	160
417	Sherman Avenue	1920	Bungalow	Secondary	187
915	State Street	1920	Bungalow	Secondary	234
402	Twelfth Street	1920	Bungalow	Secondary	263
808	Cascade Street	1921	Bungalow	Primary	45
411	Sherman Avenue	1921	Bungalow	Primary	186

Style

914	Sherman Avenue	1921	Bungalow	Primary	201
902	Cascade Street	1922	Bungalow	Secondary	50
906	Cascade Street	1922	Bungalow	Secondary	52
916	Cascade Street	1922	Bungalow	Contributing	56
902	Columbia Street	1922	Bungalow	Contributing	85
803	Columbia Street	1923	Bungalow	Secondary	77
1201	Columbia Street	1923	Bungalow	Secondary	104
1020	Oak Street	1923	Bungalow	Contributing	162
1024	Oak Street	1923	Bungalow	Contributing	163
1024	Cascade Street	1924	Bungalow	Contributing	65
801	Columbia Street	1924	Bungalow	Contributing	75
925	Columbia Street	1924	Bungalow	Contributing	95
409	Eleventh Street	1924	Bungalow	Contributing	261
607	Cascade Street	1925	Bungalow	Primary	39
924	Columbia Street	1925	Bungalow	Contributing	94
516	East Fourth Street	1925	Bungalow	Contributing	280
311	East Sherman Avenue	1925	Bungalow	Contributing	180
7	Tenth Street	1925	Bungalow	Contributing	258
1220	Columbia Street	1926	Bungalow	Secondary	109
525	East Third Street	1926	Bungalow	Contributing	278
921	Oak Street	1926	Bungalow	Secondary	158
824	State Street	1926	Bungalow	Secondary	228
915	Cascade Street	1927	Bungalow	Primary	55
1222	Cascade Street	1927	Bungalow	Secondary	71
913	Columbia Street	1927	Bungalow	Secondary	89
924	Cascade Street	1928	Bungalow	Contributing	59
1204	State Street	1928	Bungalow	Secondary	245
1202	Cascade Street	1929	Bungalow	Secondary	69
1214	Lincoln Street	1930	Bungalow	Contributing	137
1025	State Street	1930	Bungalow	Secondary	241
409	East Second Street	1935	Bungalow	Contributing	273
3	Serpentine Street	1910	Bungalow/Craftsman	Secondary	167
721	State Street	1910	Bungalow/Craftsman	Primary	222
922	Columbia Street	1924	Bungalow/Mediterranean	Primary	93
1028	Cascade Street	1910	Bungalow/Vernacular	Contributing	68
715	State Street	1910	Bungalow/Vernacular	Primary	220
1116	Sherman Avenue	1923	Colonial	Primary	207
922	State Street	1903	Colonial	Contributing*	236
811	Oak Street	1906	Colonial Revival	National Reg.	148
1029	State Street	1907	Colonial Revival	National Reg.*	242
1113	Eugene Street	1908	Colonial Revival	Primary	125
607	Hazel Street	1909	Colonial Revival	Primary	131
727	Sherman Avenue	1909	Colonial Revival	Primary	195

Style

918	Oak Street	1909	Colonial Revival/Bungalow	Secondary	157
1101	Sherman Avenue	1909	Colonial Revival/Craftsman	Primary	206
915	Eugene Street	1912	Colonial Revival/Vernacular	Secondary	119
5, 9	East State Street	1945	Commerce/Moderne	Secondary	211
724	Oak Street	1906	Craftsman	Secondary	142
814	Oak Street	1907	Craftsman	Secondary	149
911	Oak Street	1907	Craftsman	Primary	156
603	Sherman Avenue	1907	Craftsman	Secondary	188
1002	Cascade Street	1908	Craftsman	Secondary	61
802	Oak Street	1909	Craftsman	Primary	145
1227	State Street	1910	Craftsman	Contributing	249
1213	Oak Street	1911	Craftsman	Primary*	165
1001	Cascade Street	1912	Craftsman	Primary	60
1009	Sherman Avenue	1912	Craftsman	Primary	205
907	Cascade Street	1913	Craftsman	Primary	53
903	Oak Street	1913	Craftsman	Primary*	153
802	Columbia Street	1905	Craftsman/Classic Box	Secondary	76
21	East State Street	1905	Craftsman/Classic Box	Secondary	213
720	Columbia Street	1908	Craftsman/Classic Box	Primary	74
805	Sherman Avenue	1908	Craftsman/Classic Box	Primary	196
516	Seventh Street	1909	Craftsman/Classic Box	Secondary	251
422	Twelfth Street	1909	Craftsman/Classic Box	Secondary	266
11	East State Street	1910	Craftsman/Classic Box	Primary	212
912	State Street	1908	Craftsman/Vernacular	Primary	232
1007	Cascade Street	1913	Craftsman/Vernacular	Contributing	62
903	Eugene Street	1913	Craftsman/Vernacular	Primary	117
916	Columbia Street	1914	Craftsman/Vernacular	Secondary	90
1223	Cascade Street	1921	Craftsman/Vernacular	Contributing	72
1006	Sherman Avenue	1925	Dutch Colonial	National Reg.	204
719	State Street	1903	Dutch Colonial Revival	Primary*	221
613	Oak Street	1909	Dutch Colonial Revival	Primary	141
1019	Columbia Street	1910	Dutch Colonial Revival	Secondary	100
705	Cascade Street	1910	Dutch Colonial/Vernacular	Contributing	41
1222	Columbia Street	1926	English Cottage	Primary	110
522	East Third Street	1929	English Cottage	Primary	277
923	Oak Street	1929	English Cottage	Primary	159
909	Columbia Street	1931	English Cottage	Primary	87
823	Cascade Street	1934	English Cottage	Primary	49
1027	Columbia Street	1937	English Cottage	Primary	103
1023	Columbia Street	1927	English Cottage/Vernacular	Secondary	101

Style

1005	State Street	1932	English Cottage/Vernacular	Primary	237
825	Sherman Avenue	1936	English Cottage/Vernacular	Secondary	199
903	State Street	1900	Gothic	Primary	229
612	State Street	1912	Gothic	Primary	217
224	Thirteenth Street	1877	Gothic Revival	Primary	268
823	Eugene Street	1916	Greek Revival	Primary	116
1100	State Street	1937	Mediterranean	National Reg.*	243
1204	Columbia Street	1936	Norman Farmhouse	Primary	105
318	Ninth Street	1898	Queen Anne	National Reg.*	252
821	Oak Street	1901	Queen Anne	Primary*	151
621	State Street	1902	Queen Anne	Primary*	218
615	Hazel Street	1903	Queen Anne	Secondary	132
512	East Fourth Street	1904	Queen Anne	Primary	279
801	Cascade Street	1905	Queen Anne	Contributing	43
1219	Columbia Street	1905	Queen Anne	Primary	108
313	Eugene Street	1905	Queen Anne	Secondary	113
1015	Columbia Street	1908	Queen Anne	Primary	97
403	Sherman Avenue	1908	Queen Anne	Primary	185
3	East Sherman Avenue	1908	Queen Anne	Secondary	171
705	State Street	1912	Queen Anne/Bungalow	Primary	219
1009	Columbia Street	1912	Queen Anne/Craftsman	Primary	96
721	Cascade Street	1895	Queen Anne/Vernacular	Primary	42
601	Oak Street	1895	Queen Anne/Vernacular	Primary	138
215	East Sherman Avenue	1898	Queen Anne/Vernacular	Primary	179
706	Sherman Avenue	1900	Queen Anne/Vernacular	Secondary	190
1	State Street	1903	Queen Anne/Vernacular	Primary*	216
725	Sherman Avenue	1904	Queen Anne/Vernacular	Primary	194
1231	Sherman Avenue	1905	Queen Anne/Vernacular	Contributing	210
1223	State Street	1905	Queen Anne/Vernacular	Secondary	248
911	Sherman Avenue	1909	Queen Anne/Vernacular	Primary	200
	Oak Street	1910	Rock Wall	Primary	284
	State Street	1910	Rock Wall	Primary	285
	Ninth Street	1913	Rock Wall	Primary	286
	Ninth Street	1905	Stairs	Primary	283
	Second Street	1905	Stairs	Primary	282
725	Oak Street	1904	Stick	National Reg.*	143
410	Ninth Street	1940	Tract	Contributing	255

Style

1022	State Street	1900	Utilitarian	Primary	240
311	Sherman Avenue	1892	Vernacular	Primary*	184
809	Columbia Street	1895	Vernacular	Secondary	79
613	Cascade Street	1896	Vernacular	Primary	40
602	Oak Street	1898	Vernacular	Primary	139
111	East Sherman Avenue	1899	Vernacular	Contributing	176
814	Cascade Street	1900	Vernacular	Secondary	48
523	East Fourth Street	1900	Vernacular	Primary	281
9	East Sherman Avenue	1900	Vernacular	Secondary	175
719	Hazel Street	1900	Vernacular	Secondary	133
719	Sherman Avenue	1900	Vernacular	Secondary	193
423	East Third Street	1901	Vernacular	Secondary	275
805	State Street	1901	Vernacular	Secondary	226
415	East Second Street	1903	Vernacular	Contributing	274
504	Thirteenth Street	1903	Vernacular	Contributing	271
801	Hazel Street	1904	Vernacular	Secondary	135
809	Cascade Street	1905	Vernacular	Contributing	46
806	Columbia Street	1905	Vernacular	Secondary	78
814	Columbia Street	1905	Vernacular	Secondary	80
824	Columbia Street	1905	Vernacular	Secondary	83
1110	Eugene Street	1905	Vernacular	Primary	124
1114	Eugene Street	1905	Vernacular	Secondary	126
1207	Eugene Street	1905	Vernacular	Secondary	127
224	Serpentine Street	1905	Vernacular	Secondary	168
137	Sherman Avenue	1905	Vernacular	Contributing	182
707	Sherman Avenue	1905	Vernacular	Secondary	191
814	State Street	1905	Vernacular	Primary	227
905	State Street	1905	Vernacular	Primary	231
1203	State Street	1906	Vernacular	Primary	244
1	East Sherman Avenue	1907	Vernacular	Primary	170
508	Ninth Street	1907	Vernacular	Secondary	256
411	Twelfth Street	1907	Vernacular	Secondary	265
307	East Second Street	1908	Vernacular	Contributing	272
717	Eugene Street	1908	Vernacular	Contributing	115
805	Oak Street	1908	Vernacular	Secondary	146
410	Seventh Street	1908	Vernacular	Secondary	250
102	Sherman Avenue	1908	Vernacular	Contributing	181
715	Sherman Avenue	1908	Vernacular	Secondary	192
1024	Columbia Street	1909	Vernacular	Contributing	102
1215	Eugene Street	1909	Vernacular	Contributing	128
610	Oak Street	1909	Vernacular	Secondary	140
703	Sherman Avenue	1909	Vernacular	Primary	189
1215	Sherman Avenue	1909	Vernacular	Secondary	209
4	East Sherman Avenue	1910	Vernacular	Secondary	172
210	East Sherman Avenue	1910	Vernacular	Contributing	178
1216	Eugene Street	1910	Vernacular	Secondary	129
308	Serpentine Street	1910	Vernacular	Contributing	169
303	Sherman Avenue	1910	Vernacular	Primary	183

Style

410	Twelfth Street	1910	Vernacular	Contributing	264
6	East Sherman Avenue	1911	Vernacular	Contributing	173
8	East Sherman Avenue	1911	Vernacular	Secondary	174
416	Tenth Street	1912	Vernacular	Contributing	260
914	Eugene Street	1913	Vernacular	Secondary	118
23	East State Street	1920	Vernacular	Contributing	214
917	Eugene Street	1922	Vernacular	Contributing	120
714	Columbia Street	1930	Vernacular	Primary	73
724	Hazel Street	1937	Vernacular	Primary	134
204	Thirteenth Street	1940	Vernacular	Secondary	267
406	Thirteenth Street	1940	Vernacular	Contributing	269
410	Thirteenth Street	1940	Vernacular	Contributing	270
316	East Eugene Street	1910	Vernacular/Bungalow	Contributing	111
111	East State Street	1910	Vernacular/Bungalow	Secondary	215
728	State Street	1911	Vernacular/Bungalow	Secondary	224
412	Tenth Street	1912	Vernacular/Bungalow	Contributing	259
810	Cascade Street	1919	Vernacular/Bungalow	Contributing	47
917	Columbia Street	1925	Vernacular/Bungalow	Primary	91
817	Sherman Avenue	1939	Vernacular/Bungalow	Contributing	198
911	Cascade Street	1900	Vernacular/Colonial Revival	Primary	54
420	Eleventh Street	1925	Vernacular/Gothic	Primary*	262
406	Ninth Street	1900	Vernacular/Queen Anne	Contributing	253
801	Oak Street	1900	Vernacular/Queen Anne	Contributing	144
815	Oak Street	1902	Vernacular/Queen Anne	Contributing	150
1002	Sherman Avenue	1903	Vernacular/Queen Anne	Primary	203
1001	Sherman Avenue	1905	Vernacular/Queen Anne	Secondary	202
407	Ninth Street	1906	Vernacular/Queen Anne	Primary	254
1209	Sherman Avenue	1907	Vernacular/Queen Anne	Secondary	208
828	Columbia Street	1933	Vernacular/Tudor	Contributing	84

* In Comprehensive Plan

Appendix D

Rank

	Address	Date	Style	Rank	SHPO #
318	Ninth Street	1898	Queen Anne	Nat. Reg. *	252
811	Oak Street	1906	Colonial Revival	Nat. Reg.	148
725	Oak Street	1904	Stick	Nat. Reg. *	143
1006	Sherman Avenue	1925	Dutch Colonial	Nat. Reg.	204
1209	State Street	1913	Arts & Crafts	Nat. Reg. *	247
1029	State Street	1907	Colonial Revival	Nat. Reg. *	242
1100	State Street	1937	Mediterranean	Nat. Reg. *	243
903	Cascade Street	1908	Bungalow	Primary	51
923	Cascade Street	1908	Bungalow	Primary	58
1026	Cascade Street	1910	Bungalow	Primary	67
1021	Cascade Street	1915	Bungalow	Primary	64
808	Cascade Street	1921	Bungalow	Primary	45
607	Cascade Street	1925	Bungalow	Primary	39
915	Cascade Street	1927	Bungalow	Primary	55
1001	Cascade Street	1912	Craftsman	Primary	60
907	Cascade Street	1913	Craftsman	Primary	53
823	Cascade Street	1934	English Cottage	Primary	49
721	Cascade Street	1895	Queen Anne/Vernacular	Primary	42
613	Cascade Street	1896	Vernacular	Primary	40
911	Cascade Street	1900	Vernacular/Colonial Revival	Primary	54
1018	Columbia Street	1910	Arts & Crafts	Primary	99
910	Columbia Street	1915	Bungalow	Primary	88
1016	Columbia Street	1915	Bungalow	Primary	98
920	Columbia Street	1916	Bungalow	Primary	92
922	Columbia Street	1924	Bungalow/Mediterranean	Primary	93
720	Columbia Street	1908	Craftsman/Classic Box	Primary	74
1222	Columbia Street	1926	English Cottage	Primary	110
909	Columbia Street	1931	English Cottage	Primary	87
1027	Columbia Street	1937	English Cottage	Primary	103
1204	Columbia Street	1936	Norman Farmhouse	Primary	105
1219	Columbia Street	1905	Queen Anne	Primary	108
1015	Columbia Street	1908	Queen Anne	Primary	97
1009	Columbia Street	1912	Queen Anne/Craftsman	Primary	96
714	Columbia Street	1930	Vernacular	Primary	73
917	Columbia Street	1925	Vernacular/Bungalow	Primary	91
512	East Fourth Street	1904	Queen Anne	Primary	279
523	East Fourth Street	1900	Vernacular	Primary	281
215	East Sherman Avenue	1898	Queen Anne/Vernacular	Primary	179
1	East Sherman Avenue	1907	Vernacular	Primary	170
11	East State Street	1910	Craftsman/Classic Box	Primary	212
522	East Third Street	1929	English Cottage	Primary	277
420	Eleventh Street	1925	Vernacular/Gothic	Primary *	262
1009	Eugene Street	1916	American Renaissance	Primary	122
1113	Eugene Street	1908	Colonial Revival	Primary	125
903	Eugene Street	1913	Craftsman/Vernacular	Primary	117

Rank

823	Eugene Street	1916	Greek Revival	Primary	116
1110	Eugene Street	1905	Vernacular	Primary	124
607	Hazel Street	1909	Colonial Revival	Primary	131
724	Hazel Street	1937	Vernacular	Primary	134
	Ninth Street	1913	Rock Wall	Primary	286
	Ninth Street	1905	Stairs	Primary	283
407	Ninth Street	1906	Vernacular/Queen Anne	Primary	254
810	Oak Street	1909	Bungalow	Primary	147
902	Oak Street	1911	Bungalow	Primary	152
1002	Oak Street	1911	Bungalow	Primary	161
1001	Oak Street	1918	Bungalow	Primary	160
911	Oak Street	1907	Craftsman	Primary	156
802	Oak Street	1909	Craftsman	Primary	145
1213	Oak Street	1911	Craftsman	Primary *	165
903	Oak Street	1913	Craftsman	Primary *	153
613	Oak Street	1909	Dutch Colonial Revival	Primary	141
923	Oak Street	1929	English Cottage	Primary	159
821	Oak Street	1901	Queen Anne	Primary *	151
601	Oak Street	1895	Queen Anne/Vernacular	Primary	138
	Oak Street	1910	Rock Wall	Primary	284
602	Oak Street	1898	Vernacular	Primary	139
	Second Street	1905	Stairs	Primary	282
411	Sherman Avenue	1921	Bungalow	Primary	186
914	Sherman Avenue	1921	Bungalow	Primary	201
1116	Sherman Avenue	1923	Colonial	Primary	207
727	Sherman Avenue	1909	Colonial Revival	Primary	195
1101	Sherman Avenue	1909	Colonial Revival/Craftsman	Primary	206
1009	Sherman Avenue	1912	Craftsman	Primary	205
805	Sherman Avenue	1908	Craftsman/Classic Box	Primary	196
403	Sherman Avenue	1908	Queen Anne	Primary	185
725	Sherman Avenue	1904	Queen Anne/Vernacular	Primary	194
911	Sherman Avenue	1909	Queen Anne/Vernacular	Primary	200
703	Sherman Avenue	1909	Vernacular	Primary	189
303	Sherman Avenue	1910	Vernacular	Primary	183
311	Sherman Avenue	1892	Vernacular	Primary *	184
1002	Sherman Avenue	1903	Vernacular/Queen Anne	Primary	203
1022	State Street	1903	Bungalow	Primary	239
904	State Street	1907	Bungalow	Primary	230
914	State Street	1908	Bungalow	Primary	233
803	State Street	1909	Bungalow	Primary	225
921	State Street	1912	Bungalow	Primary	235
721	State Street	1910	Bungalow/Craftsman	Primary	222
715	State Street	1910	Bungalow/Vernacular	Primary	220
912	State Street	1908	Craftsman/Vernacular	Primary	232
719	State Street	1903	Dutch Colonial Revival	Primary *	221
1005	State Street	1932	English Cottage/Vernacular	Primary	237
903	State Street	1900	Gothic	Primary	229
612	State Street	1912	Gothic	Primary	217
621	State Street	1902	Queen Anne	Primary *	218

Rank

705	State Street	1912	Queen Anne/Bungalow	Primary	219
1	State Street	1903	Queen Anne/Vernacular	Primary *	216
	State Street	1910	Rock Wall	Primary	285
1022	State Street	1900	Utilitarian	Primary	240
814	State Street	1905	Vernacular	Primary	227
905	State Street	1905	Vernacular	Primary	231
1203	State Street	1906	Vernacular	Primary	244
224	Thirteenth Street	1877	Gothic Revival	Primary	268
803	Cascade Street	1912	Bungalow	Secondary	44
1025	Cascade Street	1912	Bungalow	Secondary	66
902	Cascade Street	1922	Bungalow	Secondary	50
906	Cascade Street	1922	Bungalow	Secondary	52
1222	Cascade Street	1927	Bungalow	Secondary	71
1202	Cascade Street	1929	Bungalow	Secondary	69
1002	Cascade Street	1908	Craftsman	Secondary	61
814	Cascade Street	1900	Vernacular	Secondary	48
1206	Columbia Street	1915	Bungalow	Secondary	106
803	Columbia Street	1923	Bungalow	Secondary	77
1201	Columbia Street	1923	Bungalow	Secondary	104
1220	Columbia Street	1926	Bungalow	Secondary	109
913	Columbia Street	1927	Bungalow	Secondary	89
802	Columbia Street	1905	Craftsman/Classic Box	Secondary	76
916	Columbia Street	1914	Craftsman/Vernacular	Secondary	90
1019	Columbia Street	1910	Dutch Colonial Revival	Secondary	100
1023	Columbia Street	1927	English Cottage/Vernacular	Secondary	101
809	Columbia Street	1895	Vernacular	Secondary	79
806	Columbia Street	1905	Vernacular	Secondary	78
814	Columbia Street	1905	Vernacular	Secondary	80
824	Columbia Street	1905	Vernacular	Secondary	83
201	East Sherman Avenue	1912	Bungalow	Secondary	177
3	East Sherman Avenue	1908	Queen Anne	Secondary	171
9	East Sherman Avenue	1900	Vernacular	Secondary	175
4	East Sherman Avenue	1910	Vernacular	Secondary	172
8	East Sherman Avenue	1911	Vernacular	Secondary	174
5, 9	East State Street	1945	Commerce/Moderne	Secondary	211
21	East State Street	1905	Craftsman/Classic Box	Secondary	213
111	East State Street	1910	Vernacular/Bungalow	Secondary	215
423	East Third Street	1901	Vernacular	Secondary	275
1107	Eugene Street	1912	Bungalow	Secondary	123
1004	Eugene Street	1914	Bungalow	Secondary	121
915	Eugene Street	1912	Colonial Revival/Vernacular	Secondary	119
313	Eugene Street	1905	Queen Anne	Secondary	113
1114	Eugene Street	1905	Vernacular	Secondary	126
1207	Eugene Street	1905	Vernacular	Secondary	127
1216	Eugene Street	1910	Vernacular	Secondary	129
914	Eugene Street	1913	Vernacular	Secondary	118
419	Front Street	1911	Bungalow	Secondary	130

Rank

615	Hazel Street	1903	Queen Anne	Secondary	132
719	Hazel Street	1900	Vernacular	Secondary	133
801	Hazel Street	1904	Vernacular	Secondary	135
508	Ninth Street	1907	Vernacular	Secondary	256
906	Oak Street	1908	Bungalow	Secondary	154
910	Oak Street	1908	Bungalow	Secondary	155
1203	Oak Street	1911	Bungalow	Secondary	164
921	Oak Street	1926	Bungalow	Secondary	158
918	Oak Street	1909	Colonial Revival/Bungalow	Secondary	157
724	Oak Street	1906	Craftsman	Secondary	142
814	Oak Street	1907	Craftsman	Secondary	149
805	Oak Street	1908	Vernacular	Secondary	146
610	Oak Street	1909	Vernacular	Secondary	140
3	Serpentine Street	1910	Bungalow/Craftsman	Secondary	167
224	Serpentine Street	1905	Vernacular	Secondary	168
516	Seventh Street	1909	Craftsman/Classic Box	Secondary	251
410	Seventh Street	1908	Vernacular	Secondary	250
417	Sherman Avenue	1920	Bungalow	Secondary	187
603	Sherman Avenue	1907	Craftsman	Secondary	188
825	Sherman Avenue	1936	English Cottage/Vernacular	Secondary	199
706	Sherman Avenue	1900	Queen Anne/Vernacular	Secondary	190
719	Sherman Avenue	1900	Vernacular	Secondary	193
707	Sherman Avenue	1905	Vernacular	Secondary	191
715	Sherman Avenue	1908	Vernacular	Secondary	192
1215	Sherman Avenue	1909	Vernacular	Secondary	209
1001	Sherman Avenue	1905	Vernacular/Queen Anne	Secondary	202
1209	Sherman Avenue	1907	Vernacular/Queen Anne	Secondary	208
724	State Street	1910	Bungalow	Secondary	223
1015	State Street	1912	Bungalow	Secondary	238
915	State Street	1920	Bungalow	Secondary	234
824	State Street	1926	Bungalow	Secondary	228
1204	State Street	1928	Bungalow	Secondary	245
1025	State Street	1930	Bungalow	Secondary	241
1223	State Street	1905	Queen Anne/Vernacular	Secondary	248
805	State Street	1901	Vernacular	Secondary	226
728	State Street	1911	Vernacular/Bungalow	Secondary	224
204	Thirteenth Street	1940	Vernacular	Secondary	267
402	Twelfth Street	1920	Bungalow	Secondary	263
422	Twelfth Street	1909	Craftsman/Classic Box	Secondary	266
411	Twelfth Street	1907	Vernacular	Secondary	265
917	Cascade Street	1908	Bungalow	Contribut.	57
916	Cascade Street	1922	Bungalow	Contribut.	56
1024	Cascade Street	1924	Bungalow	Contribut.	65
924	Cascade Street	1928	Bungalow	Contribut.	59
1028	Cascade Street	1910	Bungalow/Vernacular	Contribut.	68
1007	Cascade Street	1913	Craftsman/Vernacular	Contribut.	62
1223	Cascade Street	1921	Craftsman/Vernacular	Contribut.	72
705	Cascade Street	1910	Dutch Colonial/Vernacular	Contribut.	41

Rank

801	Cascade Street	1905	Queen Anne	Contribut.	43
809	Cascade Street	1905	Vernacular	Contribut.	46
810	Cascade Street	1919	Vernacular/Bungalow	Contribut.	47
821	Columbia Street	1914	Bungalow	Contribut.	82
902	Columbia Street	1922	Bungalow	Contribut.	85
801	Columbia Street	1924	Bungalow	Contribut.	75
925	Columbia Street	1924	Bungalow	Contribut.	95
924	Columbia Street	1925	Bungalow	Contribut.	94
1024	Columbia Street	1909	Vernacular	Contribut.	102
828	Columbia Street	1933	Vernacular/Tudor	Contribut.	84
316	East Eugene Street	1910	Vernacular/Bungalow	Contribut.	111
516	East Fourth Street	1925	Bungalow	Contribut.	280
409	East Second Street	1935	Bungalow	Contribut.	273
415	East Second Street	1903	Vernacular	Contribut.	274
307	East Second Street	1908	Vernacular	Contribut.	272
311	East Sherman Avenue	1925	Bungalow	Contribut.	180
111	East Sherman Avenue	1899	Vernacular	Contribut.	176
210	East Sherman Avenue	1910	Vernacular	Contribut.	178
6	East Sherman Avenue	1911	Vernacular	Contribut.	173
23	East State Street	1920	Vernacular	Contribut.	214
424	East Third Street	1915	Bungalow	Contribut.	276
525	East Third Street	1926	Bungalow	Contribut.	278
409	Eleventh Street	1924	Bungalow	Contribut.	261
509	Eugene Street	1913	Bungalow	Contribut.	114
11	Eugene Street	1915	Bungalow	Contribut.	112
717	Eugene Street	1908	Vernacular	Contribut.	115
1215	Eugene Street	1909	Vernacular	Contribut.	128
917	Eugene Street	1922	Vernacular	Contribut.	120
1214	Lincoln Street	1930	Bungalow	Contribut.	137
410	Ninth Street	1940	Tract	Contribut.	255
406	Ninth Street	1900	Vernacular/Queen Anne	Contribut.	253
1020	Oak Street	1923	Bungalow	Contribut.	162
1024	Oak Street	1923	Bungalow	Contribut.	163
801	Oak Street	1900	Vernacular/Queen Anne	Contribut.	144
815	Oak Street	1902	Vernacular/Queen Anne	Contribut.	150
308	Serpentine Street	1910	Vernacular	Contribut.	169
1231	Sherman Avenue	1905	Queen Anne/Vernacular	Contribut.	210
137	Sherman Avenue	1905	Vernacular	Contribut.	182
102	Sherman Avenue	1908	Vernacular	Contribut.	181
817	Sherman Avenue	1939	Vernacular/Bungalow	Contribut.	198
1206	State Street	1915	Bungalow	Contribut.	246
922	State Street	1903	Colonial	Contribut. *	236
1227	State Street	1910	Craftsman	Contribut.	249
7	Tenth Street	1925	Bungalow	Contribut.	258
416	Tenth Street	1912	Vernacular	Contribut.	260
412	Tenth Street	1912	Vernacular/Bungalow	Contribut.	259
504	Thirteenth Street	1903	Vernacular	Contribut.	271

Rank

406	Thirteenth Street	1940	Vernacular	Contribut.	269
410	Thirteenth Street	1940	Vernacular	Contribut.	270
410	Twelfth Street	1910	Vernacular	Contribut.	264

* In Comprehensive Plan

Appendix E

CITY OF HOOD RIVER
Historic Resource Inventory Evaluation Sheet

Ranking: _____
Resource Address: _____

A. Historic Considerations: (2.0) x Score _____ Total Pts: _____

The Resource is:

- _____ Associated with past trends, events, or values that may be either cultural, economic, social or political.
_____ Associated with a group or organization relevant to city, state, or national history.
_____ Associated with life or activities of a person significant in past; locally, statewide, or nationally

(Very strong 5 Strong 4 Moderate 3 Some 2 _____ 1 None 0)

B. Architectural Considerations: (3.0) x Score _____ Total Pts: _____

- _____ Style/Design/Building Type: Embodies the distinctive characteristics of a design, type, style, period, or method of construction
_____ Work of a major builder or architect

(Excellent 5 Very Good 4 Good 3 Fair-good 2 Poor 1)

_____ Rarity of Type:

(One of a kind 5 One of few 4 One of Several 3 _____ 2 One of Many 1)

C. Physical Integrity (1.5) x Score _____ Total Pts: _____

The Resource:

- _____ Retains integrity of original design, crafting, and materials to identify period construction.

(Intact 5 Minor 4 Moderate 3 Major/Comp 2 Major/Incomp 1 Altered 0)

D. Site Integrity (1.0) x Score _____ Total Pts _____

_____ Resource is on original site: Yes 1 No 0

- _____ Resource contributes to the immediate environment, or to the character or physical development of the area

Strong 3 Moderate 2 Some 1

_____ Site contributes to the resource's integrity

Strong 3 Moderate 2 Some 1

Final Ranking

- _____ Primary Resource (40 and up)
_____ Secondary Resource (30 to 39)
_____ Contributing Resource (20 to 29)
_____ Not included in the Inventory (20 and under)

Appendix F

Criteria For Evaluation

The following criteria are designed to guide the States, Federal agencies, and the Secretary of the Interior in evaluating potential entries (other than areas of the National Park System and National Historic Landmarks) for the National Register.

The quality of *significance* in American history, architecture, archeology, and culture is present in districts, sites, buildings, structures, and objects that possess integrity of location, design, setting, materials, workmanship, feeling, and association, and:

- A. that are associated with events that have made a significant contribution to the broad patterns of our history; or
- B. that are associated with the lives of persons significant in our past; or
- C. that embody the distinctive characteristics of a type, period, or method of construction or that represent the work of a master, or that possess high artistic values, or that represent a significant and distinguishable entity whose components may lack individual distinction; or
- D. that have yielded, or may be likely to yield, information important in prehistory or history.

Ordinarily cemeteries, birthplaces, or graves of historical figures, properties owned by religious institutions or used for religious purposes, structures that have been moved from their original locations, reconstructed historic buildings, properties primarily commemorative in nature, and properties that have achieved significance within the past

50 years *shall not be considered eligible* for the National Register. However, such properties *will qualify* if they are integral parts of districts that do meet the criteria or if they fall within the following categories:

- A. a religious property deriving primary significance from architectural or artistic distinction or historical importance; or
- B. a building or structure removed from its original location but which is significant primarily for architectural value, or which is the surviving structure most importantly associated with a historic person or event; or
- C. a birthplace or grave of a historical figure of outstanding importance if there is no other appropriate site or building directly associated with his productive life; or
- D. a cemetery which derives its primary significance from graves of persons of transcendent importance, from age, from distinctive design features, or from association with historic events; or
- E. a reconstructed building when accurately executed in a suitable environment and presented in a dignified manner as part of a restoration master plan, and when no other building or structure with the same association has survived; or
- F. a property primarily commemorative in intent if design, age, tradition, or symbolic value has invested it with its own historical significance; or
- G. a property achieving significance within the past 50 years if it is of exceptional importance.