

In This Issue:

- [Oregon Patient Safety Commission News](#)
- [Web-Based Reporting Form Update](#)
- [Nursing Home Expert Panel](#)
- [Safety Tip – Tracking Interventions](#)
- [Upcoming Events](#)

Our North Star Goal:

Oregon will have the safest health care system in the country by 2010.

Contact Us

[Commission website](#)

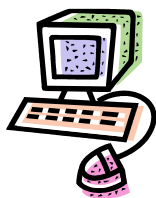
Nursing Home
Field Coordinator
Amy Gryzic:
503.227.2632
[E-mail Amy](#)

Administrator
Jim Dameron:
503.224.9226
[E-mail Jim](#)

Oregon Patient Safety Commission News

This is the **third** edition of the Patient Safety Commission's e-newsletter to nursing home participants. Our objective is to provide you with regular updates regarding the Commission's work as well as pertinent resident safety and quality improvement information. Please give us feedback. What do you want to know more about? Contact Amy with comments and suggestions. [Return to Top](#)

Web-Based Reporting Form Update



In the May issue, we reported that the Commission's web-based reporting form was slated to be ready for use in June. However, the vendor has run into a problem in completing the 'back end' (database) portion of the project.

That said, the reporting form itself is finalized, and we encourage participants to begin using this version to report serious adverse events to the Commission. Until the database issues are resolved, participants can complete the form, save it, print a copy and send it via fax (503 224 9150) to Amy.

Once the database is functional, you will simply push "submit" when the form is complete to send it securely to the Commission. We will no longer use the secure/certified email process to transmit reports.

To use the new form, be sure you have Adobe Reader 8.0 or above (if not, download [here](#)) then open [the form](#). To begin, choose "Nursing Home" under Reporting Organization. From there, you simply tab through the form to complete each box. A thorough and complete event description is critical, as are completion of the findings and action plans. This is the rich information we will confidentially share with all nursing home participants.

Formal training will occur once the database is ready. In the meantime, we strongly encourage nursing home participants to use the new form to report serious adverse events to the Commission. The success of the Commission's voluntary reporting program is largely dependent on your participation. Thank you. [Return to Top](#)

Nursing Home Expert Panel

The Nursing Home Expert Panel continues to meet and make progress on the falls management project. Their goal is to develop a simple, easy-to-use resource to address the management, investigation, monitoring and analysis of falls in the nursing home.

The investigation piece will be developed for use by front-line staff. It will include the event investigation guide (see [May newsletter](#)) developed by Oregon's Patient Safety Improvement Corps (PSIC) group. Monitoring and analysis will focus on tracking falls interventions to determine their success.

The Panel also agreed to serve as a resource for nursing home providers' inquiries. If you have a resident safety or quality improvement question, please contact Amy. She will confidentially and anonymously pass your question to Panel members and reply to you with their answers. This is one of the benefits of Commission participation; use us as a resource! [Return to Top](#)

Safety Tip - Tracking Interventions

Following an adverse event, the vast majority of nursing homes will implement an intervention to prevent the event from happening again. Once the intervention is put in place, it is critical to track its effectiveness. Tracking effectiveness relies on having a measure and following the intervention for a set amount of time to monitor it.



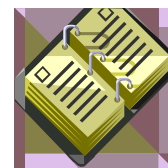
For instance, if a resident falls, the care plan might be modified to include assisting the resident to the bathroom every two hours while awake. You want to be certain that this intervention happens 100% of the time. So, it is important to document that the resident was offered assistance to the bathroom every two hours. Ensuring the documentation occurs relies on good communication, thorough education, establishing systems to promote success, monitoring compliance and consistent follow-up.

It is imperative to monitor the intervention to determine if it made a difference in keeping the resident from falling again. Once you establish and implement an intervention, set a timeframe (e.g. 72 hours, one week, two weeks, etc.) to monitor its effectiveness. You will want to closely track staff compliance with documenting offers to assist the resident to the bathroom. Praise good work and look for system failures when opportunities to improve exist. You will need to check-in with the staff and resident/representative after the specified timeframe to determine the effectiveness of the intervention. If successful, you will implement it as a permanent part of the care plan. If unsuccessful, you will develop another intervention with the staff and resident/representative. Then, you start the tracking process again! [Return to Top](#)

Upcoming Events

Commission Board Meeting

August 12, 12:30 – 3:30 pm, Clackamas Community College, Wilsonville Training Center (29353 SW Town Center Loop East, Wilsonville, 97070). Commission meetings are public and we encourage your attendance. Please contact [Linda Goertz](#), the Commission's Executive Assistant, for an agenda. [Return to Top](#)



OHCA Annual Convention 2008

September 8 & 9, Red Lion on the River. Attend the session on September 9 from 2:45 – 4:00 to learn more about the Event Investigation Guide developed by the PSIC team. The panel presentation will include Patty Townsend, RN, CCMU, Linda Kirschbaum, OHCA and Amy Gryziec of the Commission. [Return to Top](#)

*This newsletter is being sent to you because you are a participant in the Oregon Patient Safety Commission's adverse event reporting program for nursing homes. Your E-mail address will not be shared or used for any purpose unrelated to the program. If you wish to unsubscribe, please send an E-mail to linda.goertz@oregonpatientsafety.org titled "**Nursing Home Unsubscribe.**"*

Oregon Patient Safety Commission, 1020 SW Taylor St., Suite 375, Portland OR 97205