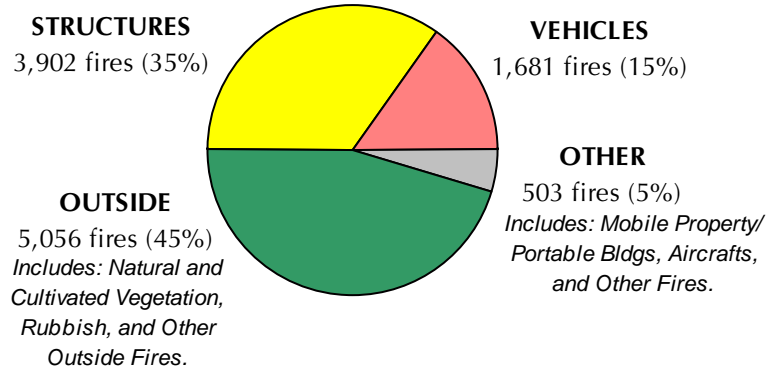




OFFICE OF STATE FIRE MARSHAL

Oregon Fire Incident Overview 2009

2009 OREGON FIRE INCIDENTS BY TYPE OF SITUATION



Total of 11,142 fire incidents In 2009.

2009 OREGON FIRE INCIDENTS BY PROPERTY USE

<i>Reported Property Use</i>	<i># of Fires</i>	<i>%</i>	<i>Est. Property Loss</i>
Residential Properties	4,795	44%	\$77.9 million
Streets & Parking Areas	2,027	19%	\$3.4 million
Outdoor Properties (fields, yards)	1,347	12%	\$0.5 million
Offices & Stores	575	5%	\$8.0 million
Storage Properties	323	3%	\$10.5 million
Other	1,861	17%	\$31.7 million

There were 10,928 fire incidents with reported "Specific Property Use" in 2009.

Of the 4,795 Residential Fires: 79% were 1- & 2-Family Homes, 16% were Apartments, and 5% were other residential-type properties.

"Other" includes property use categories each accounting for fewer than 2% of fires.

Fires in Oregon During 2009

11,142 Fires – down 7% from 2008
22 Civilian Deaths
243 Civilian Injuries
101 Fire Service Injuries
\$132 Million in Property Damage



Structure Fires – 35% of all fires

3,902 Fires – down 0.5% from 2008
13 Civilian Deaths
186 Civilian Injuries
87 Fire Service Injuries
\$113 Million in Property Damage



Motor Vehicle Fires – 15% of all fires

1,681 Fires – down 8% from 2008
3 Civilian Deaths
17 Civilian Injuries
5 Fire Service Injuries
\$10 Million in Property Damage



Outside Fires – 45% of all fires

5,056 Fires – down 10% from 2008
21 Civilian Injuries
5 Fire Service Injuries
\$6 Million in Property Damage

Includes Natural and Cultivated Vegetation, Rubbish, and Other Outside Fires.



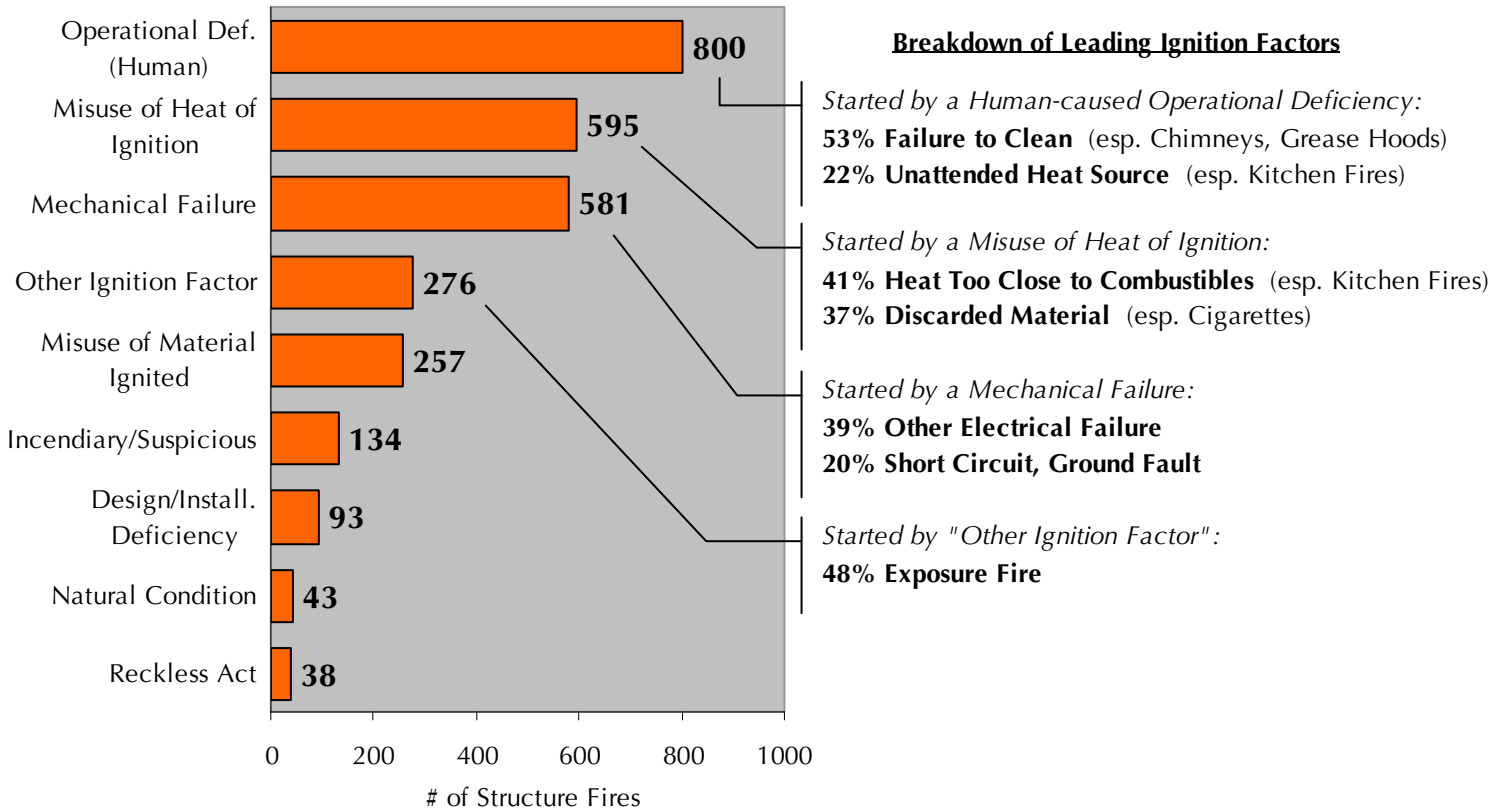
Other Fires – 5% of all fires

503 Fires – down 16% from 2008
6 Civilian Deaths
19 Civilian Injuries
4 Fire Service Injuries
\$3 Million in Property Damage

Includes Mobile Property, Aircrafts, and Other Fires.

Prepared by the Data Unit of the Oregon Office of State Fire Marshal • (503) 373-1540
Includes incident data reported by Oregon fire departments as of January 31, 2010
Value and Loss amounts include building, contents, mobile, and other property. These amounts are estimates made by firefighters on the scene and are not official insurance estimates.

IGNITION FACTORS IN STRUCTURE FIRES, 2009



Prepared by the Data Unit of the Oregon Office of State Fire Marshal • (503) 373-1540
 Includes incident data reported by Oregon fire departments as of January 31, 2010
 Value and Loss amounts include building, contents, mobile, and other property. These amounts
 are estimates made by firefighters on the scene and are not official insurance estimates.