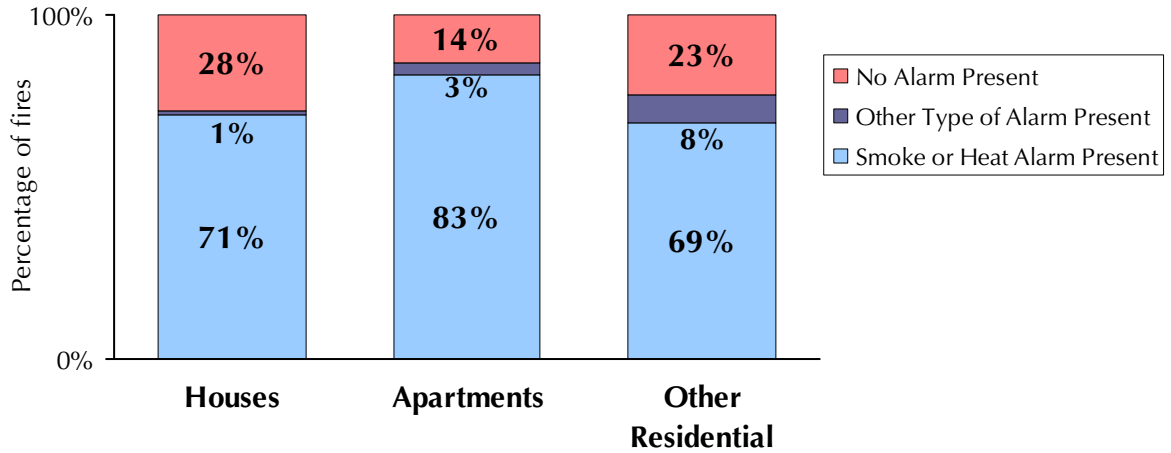




OFFICE OF STATE FIRE MARSHAL

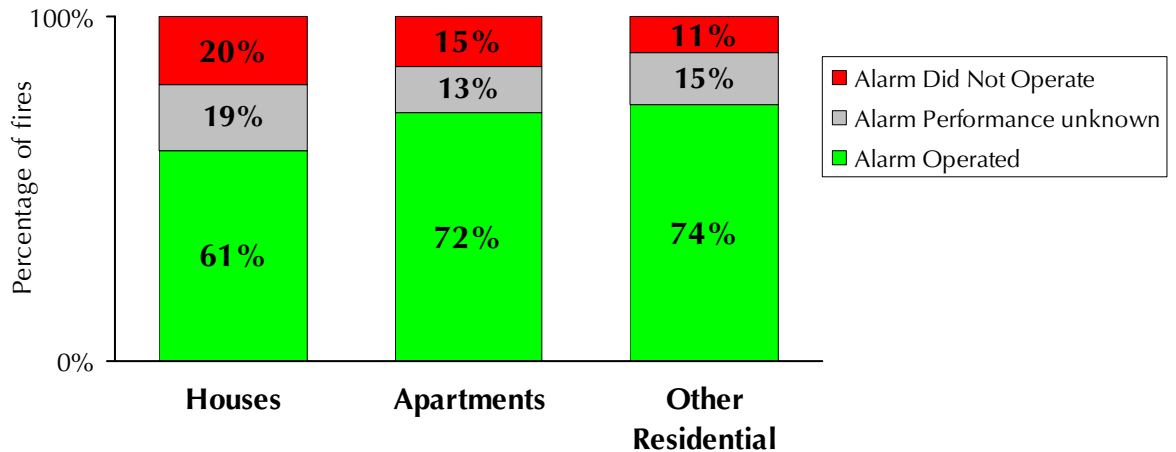
Oregon Residential Fires Smoke Alarm Data, 2005-2009

ALARM PRESENCE



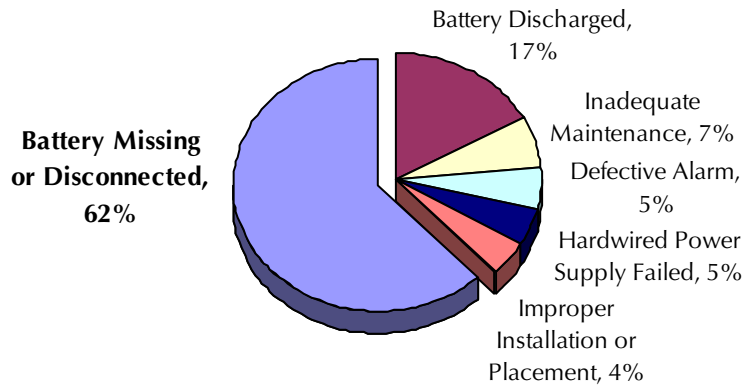
Percentages are based on 11,755 residential fires with reported alarm presence, 2005-2009.

ALARM PERFORMANCE



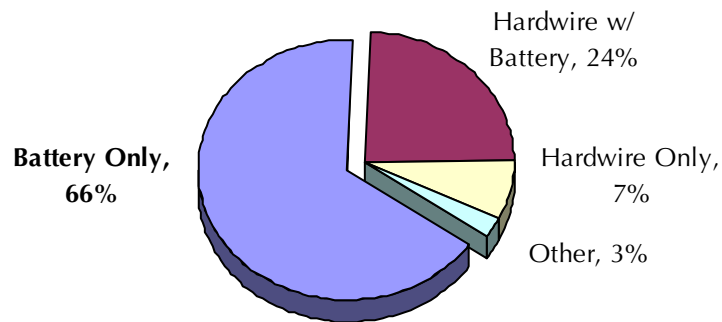
Percentages are based on 8,415 residential fires with reported alarm performance, 2005-2009.

ALARM FAILURE



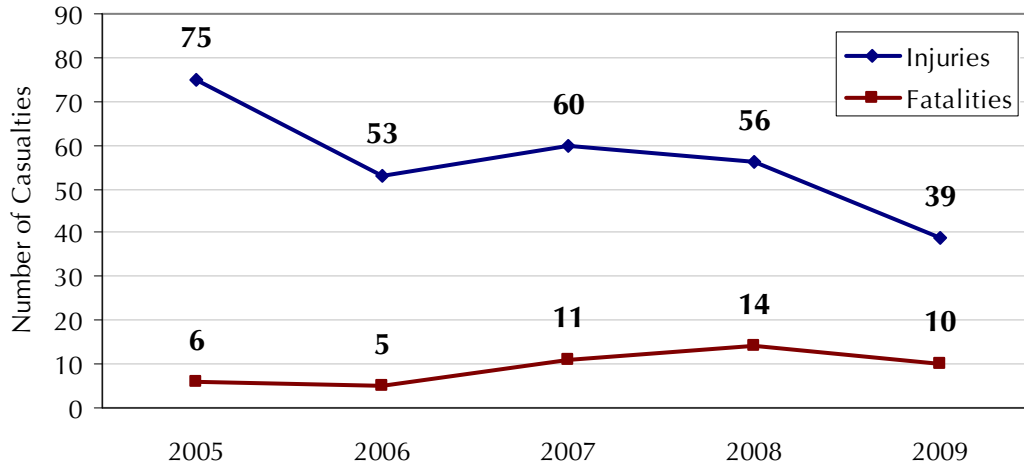
Percentages are based on 706 residential fires with reported alarm failure data, 2005-2009.

ALARM POWER SUPPLY



Percentages are based on 7,988 residential fires with reported alarm power supply data, 2005-2009.

**CIVILIAN CASUALTIES IN RESIDENTIAL FIRES
WHERE SMOKE ALARM WAS NOT PRESENT
OR DID NOT OPERATE, 2005-2009**



Note: Fire fatality counts are those in unintentional residential property fires. Intentionally-set residential fires (i.e. suicides or homicides) are excluded. Residential property fires include Residential property fires include houses, multi-family housing, mobile homes or travel trailers used as fixed residence, nursing homes, assisted living facilities, and hotels/motels.