

## AFS Western Division 2007 Riparian Challenge Nomination



Students field plant riparian trees and install protective fencing along Neskowin Creek to help implement the Tillamook Resource Area Riparian Restoration Effort.

**Project Title:** **Tillamook Resource Area Riparian Restoration Effort**

**Agency:** Salem District  
Bureau of Land Management  
1717 Fabry Rd., SE  
Salem, Oregon 97306

**Primary Contacts:** **Kurt Heckerth**, Tillamook Resource Area, (503) 815-1132  
[Kurt\\_Heckerth@blm.gov](mailto:Kurt_Heckerth@blm.gov)

**Roy Price**, Salem BLM, (503) 375-5662  
[Roy\\_Price@blm.gov](mailto:Roy_Price@blm.gov)

**Other Contact:** Bob Ruediger, Salem BLM, (503) 375-5608  
[Bob\\_Ruediger@blm.gov](mailto:Bob_Ruediger@blm.gov)

**Project Dates:** Started in 2002, expected to continue until at least 2012

**AFS Western Division  
2007 Riparian Challenge Nomination**

**Tillamook Resource Area Riparian Restoration Effort**

*“We are fortunate to have the Bureau of Land Management’s support in developing and operating a native plant nursery coop. We have received, over the last few years, and are still the recipients of thousands of native conifers, hardwoods, and shrubs grown from locally collected seed sources. Our price for plant materials is labor collecting seed, potting, and transplanting. Well worth it!”* **Maggie Peyton, Upper Nehalem Watershed Council, Project Manager, 4-27-2006**

**Project Need**

The Tillamook Resource Area encompasses approximately 4,000 sq. miles within five counties (Tillamook, Clatsop, Columbia, Washington and Yamhill) in the northwest corner of Oregon. Rivers within the project area are tributaries to the Willamette River and Columbia River or drain directly into the Pacific Ocean. Across this landscape, riparian habitats have been altered by various land management practices. Oregon Department of Environmental Quality Total Maximum Daily Load studies, North Coast Basin Water Quality Management Plans, Watershed Council Action Plans, and the Tillamook Bay Comprehensive Conservation and Management Plan have all concluded that vegetation is needed in riparian zones to reduce pollutants, stabilize streambanks, and lower stream temperatures.



Populations of five of the major native salmonids inhabit streams within the Tillamook Resource Area where riparian habitat restoration activities are occurring. Several of these populations are depressed and several are ESA-listed as threatened species or are Bureau sensitive species:

- Chinook salmon
  - Lower Columbia River Chinook salmon (ESA - Threatened)
  - Coastal Chinook salmon
- Coho salmon
  - Lower Columbia River Coho salmon (ESA -Threatened)
  - Coastal coho salmon (Bureau sensitive)
- Steelhead
  - Lower Columbia River steelhead (ESA -Threatened)
  - Upper Willamette River steelhead (ESA -Threatened)
  - Coastal steelhead
- Chum salmon
  - Columbia River Chum salmon (ESA -Threatened)
  - Coastal chum salmon (Bureau sensitive)
- Coastal cutthroat trout



**Objectives**

Recognizing the need to encourage riparian restoration on not just BLM lands, the Tillamook Resource Area and the Salem District’s Horning Seed Orchard entered into a Memorandum of Understanding (MOU) with various watershed partners to implement riparian restoration in all the watersheds in the resource area with BLM ownership including streams feeding the Lower Columbia River and several northwest Oregon coastal bays. The MOU was signed in 2002 and the restoration efforts have been on-going since then.

The primary objective of the partnership is to promote healthy forest/riparian ecosystem conditions throughout the Tillamook Resource Area by collecting and growing native plant seeds and cuttings to

develop into large planting stock better able to withstand competition and depredation for management plans and restoration activities on lands administered by BLM and on lands of interest by the various watershed and bay area councils. In addition to providing shade and filtering to improve salmonid habitat and water quality, much of the riparian planting is also used to help control invasives such as Reed Canarygrass, Scot's Broom, English Ivy, Himalayan Blackberry, and Japanese Knotweed that presently occupy project sites. This is a collaborative effort designed to encourage application of innovative solutions to forest/riparian health conditions on an ongoing basis across the landscape to help implement the Oregon Plan for Salmon and Watersheds.

Other objectives are to provide restoration project advice and education to promote better fish and wildlife habitat and ecosystem diversity.

## Partnership

This nomination is to recognize the following partners for their contributions to restore riparian habitats in the Tillamook Resource Area. By naming these organizations, we do not mean to diminish the incredibly important contribution of all the individuals who donated their hard work and the landowners who have made their properties available for the field projects.

Tillamook Resource Area, Salem BLM  
Horning Seed Orchard, Salem BLM  
Lower and Upper Nehalem Watershed Councils  
Nestucca/Neskowin Watersheds Council  
Oregon Youth Authority (Camp Tillamook)  
Scappoose Bay Watershed Council  
Tillamook Bay Watershed Council  
Tillamook County Soil and Water Conservation District  
Tillamook Estuaries Partnership  
Tualatin River Watershed Council  
Yamhill Watershed Council

In addition, we would like to recognize the National Fish and Wildlife Foundation and Oregon Watershed Enhancement Board for their additional financial support to the partners above.



The BLM supports the riparian restoration effort through the propagation of native plant materials at the Horning Seed Orchard for future outplanting, providing technical expertise, conducting public education about riparian restoration, occasionally loaning equipment to the other parties, or providing other services/materials to restore riparian habitat.

The other parties to the agreement support the riparian restoration effort by conducting public education about riparian restoration, recruiting and supporting willing landowner participants, propagating additional plant materials, outplanting riparian stock, assisting with riparian fencing, maintaining restoration sites, monitoring or providing other services and materials to restore riparian sites.

Since the signing of the MOU through September 2006, Salem-BLM has expended about \$181,700 of its normal appropriations and \$191,000 of National Fish and Wildlife Foundation grant funds on the Tillamook Resource Area Riparian Restoration Effort. The other partners, in total, contributed about \$758,400 worth of non-federal goods and services.

## Accomplishments to date

In FY 2006 alone, the partnership planted over 36,000 trees and shrubs (mostly grown at Horning Seed Orchard or Camp Tillamook) along 35 miles of stream and in 27 acres of wetland in cooperation with 177 landowners. About 55,000 plants were propagated for out-year projects through Salem District's Horning Seed Orchard, the Tillamook Native Plant Cooperative Nursery at the Oregon Youth Authority Camp, and watershed council sites.

On average, about 30,000 riparian trees and shrubs per year have been field planted along the streams below. Salem District's Horning Seed Orchard provides approximately 12,000 large tree and shrub specimens annually.

The following is a summary of all of the work completed for this effort since the MOU through September 30, 2006:

TILLAMOOK RIPARIAN RESTORATION EFFORT ACCOMPLISHMENTS SINCE SIGNING OF THE MOU							
Activity	Measure	FY02	FY03	FY04	FY05	FY06	TOTAL
Streams Planted	(Miles)	20	21	24.65	22.5	35.2	123.35
Rip. Fence Constructed	(Miles)			2.4	4.65	7.7	14.75
Project Maintenance	(Sites)			28			28
	(Miles)			18	38.4	40.1	96.5
Landowners Involved	(No.)			216	160	178	554
Future Land Owner Contact	(No.)			110	108	130	348
Plants Propagated (Other than at Horning Camp Tillamook or Phipps)	(No.)			2,000	5,100	2,400	9,500
Education Sessions or Tours	(No.)			18	37	25	80
	(People)			259	1,375	740	2,374
Monitoring	(Sites)			24			24
	(Miles)			3	50.6	50.1	103.7
Wetlands Planted	(Acres)				16	31.4	47.4
BLM / NFWF Funds Expended		\$65,000	\$65,000	\$120,000	\$57,700	\$65,000	\$372,700
Partner Donation Value (includes OWEB funding)		\$78,292	\$90,039	\$272,102	\$173,847	\$144,153	\$758,433

## Monitoring

Since the MOU, over 100 miles of stream where riparian planting had been conducted were monitored by volunteers with the local watershed councils. Monitoring of project restoration sites is an important step in ensuring that the riparian plantings are successful. Many sites require follow-up maintenance in order to increase plant survival and maintain fence integrity when and where the landowner's attempts prove to be inadequate.



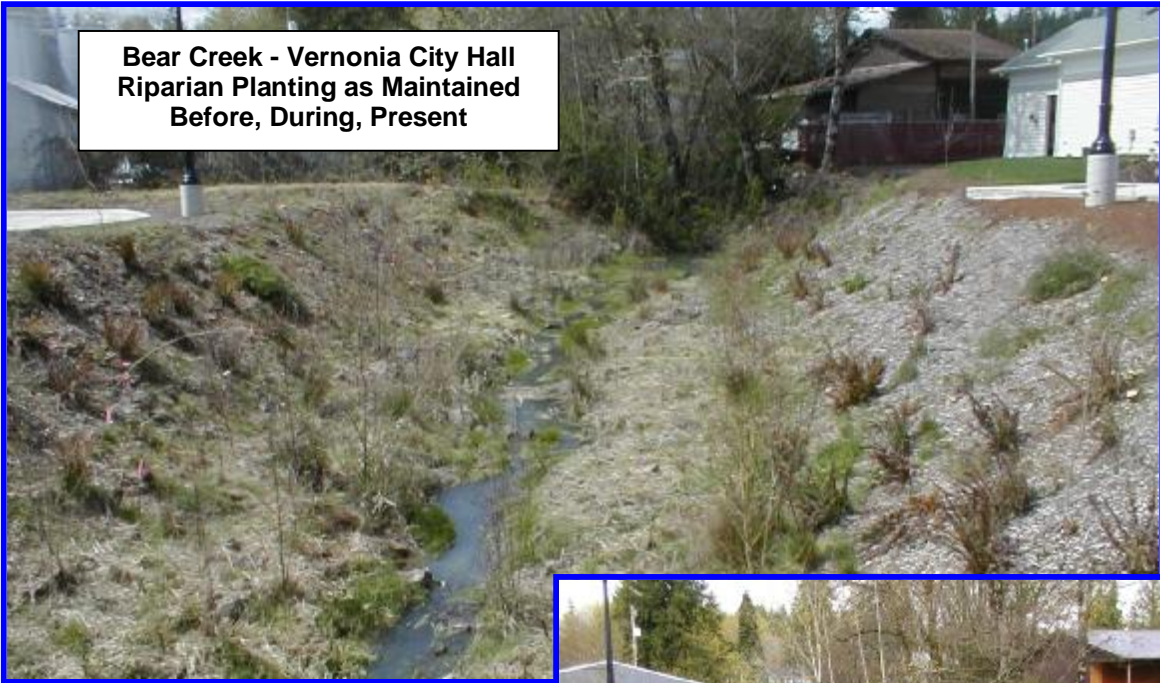
## Education and Outreach

Public tours of the restoration sites and activities are conducted every year by all the partners in the restoration effort. Since the MOU, at least eighty education sessions or demonstration tours, attended by about 2,374 people have been conducted. Riparian restoration updates are provided at watershed council meetings and in the watershed coordinator's and agency reports.

**Bureau of Land Management's  
Horning Seed Orchard  
Restoration Materials Production  
Coop Work Days and Plant Delivery**



**Bear Creek - Vernonia City Hall  
Riparian Planting as Maintained  
Before, During, Present**





**Tillamook Estuaries Partnership  
Backyard Planting Program**

☞ Tillamook River mainstem: Before



Tillamook River mainstem: After ☞



**Volunteers**

