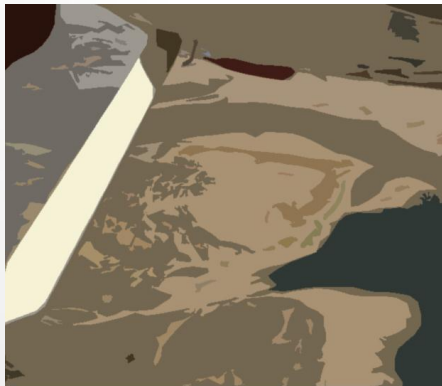




# Monthly Business Report

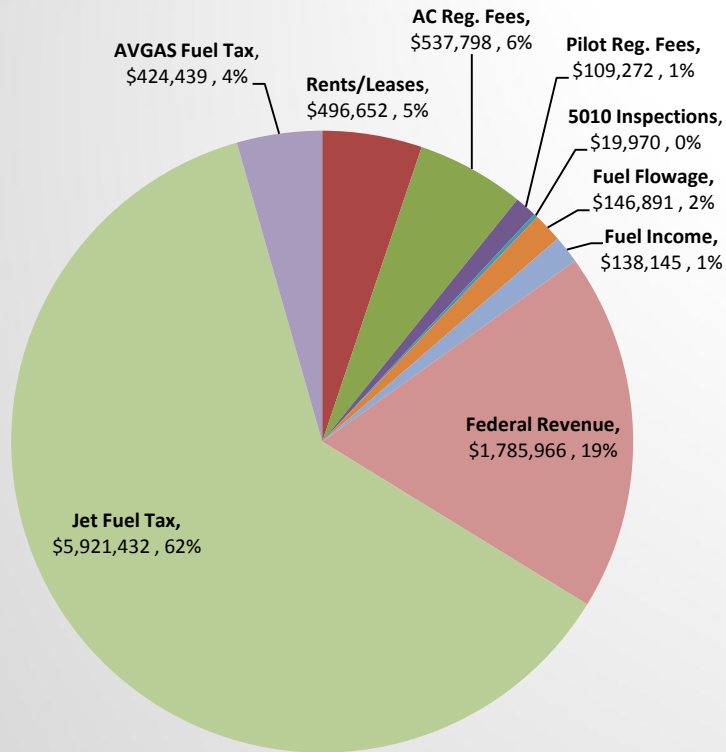


January 19, 2017

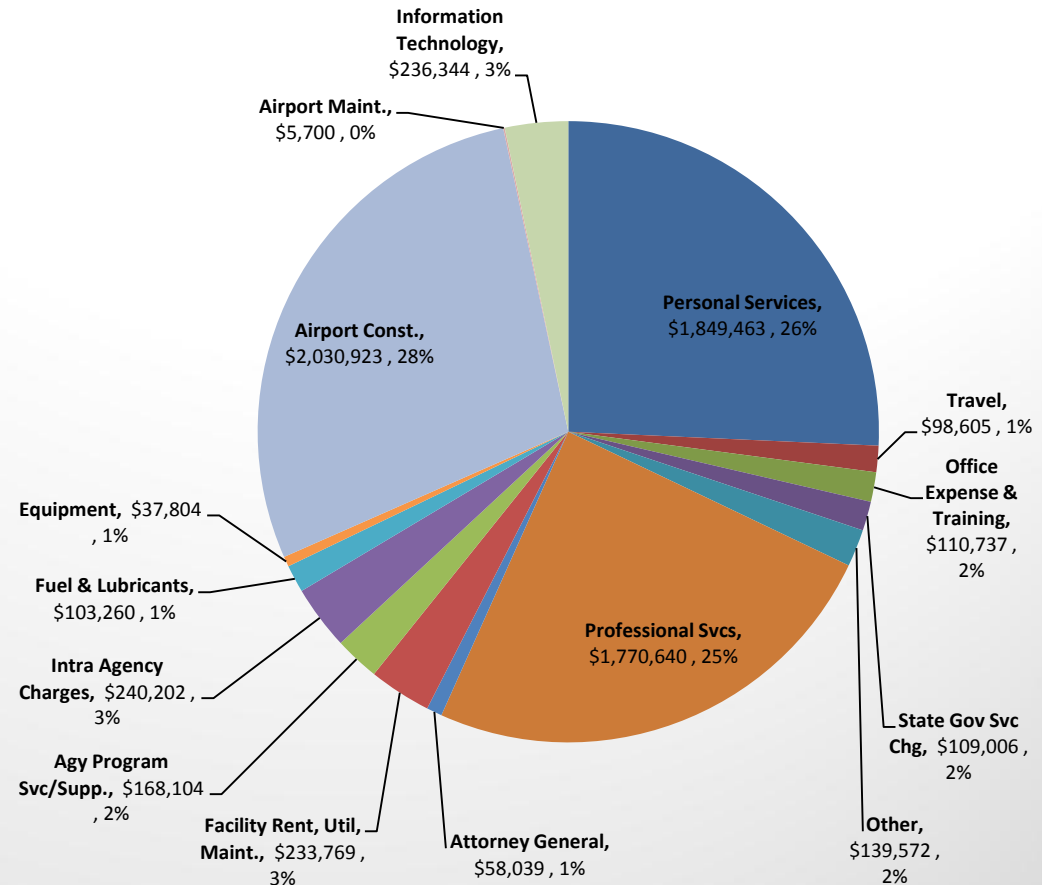
# Agency Wide

## Sources and Use of Funds 2015-17

### Revenues



### Expenditures

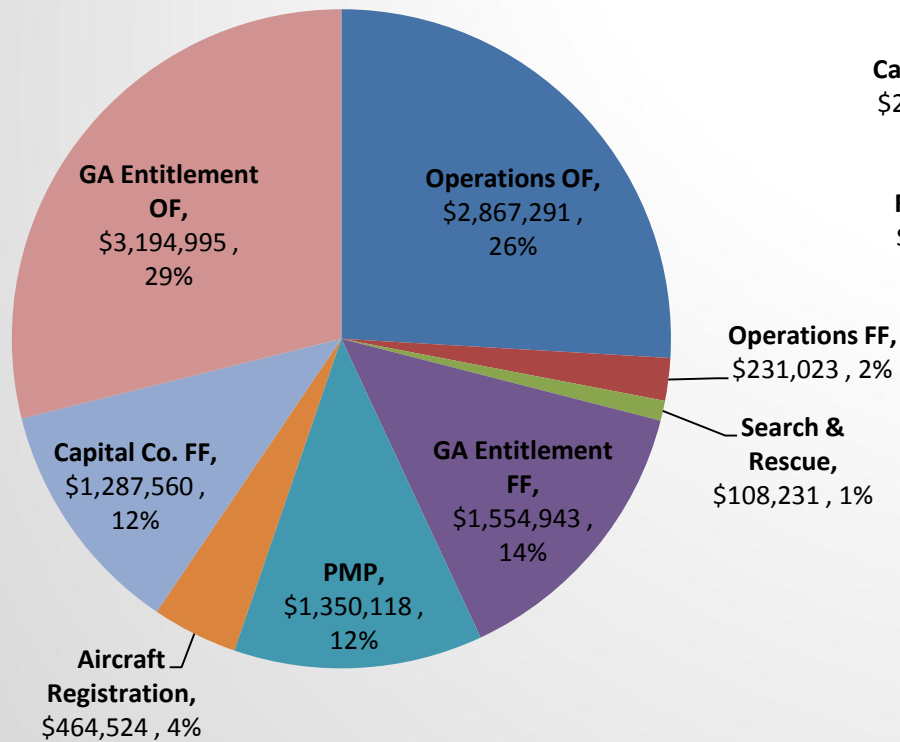


# Agency Wide

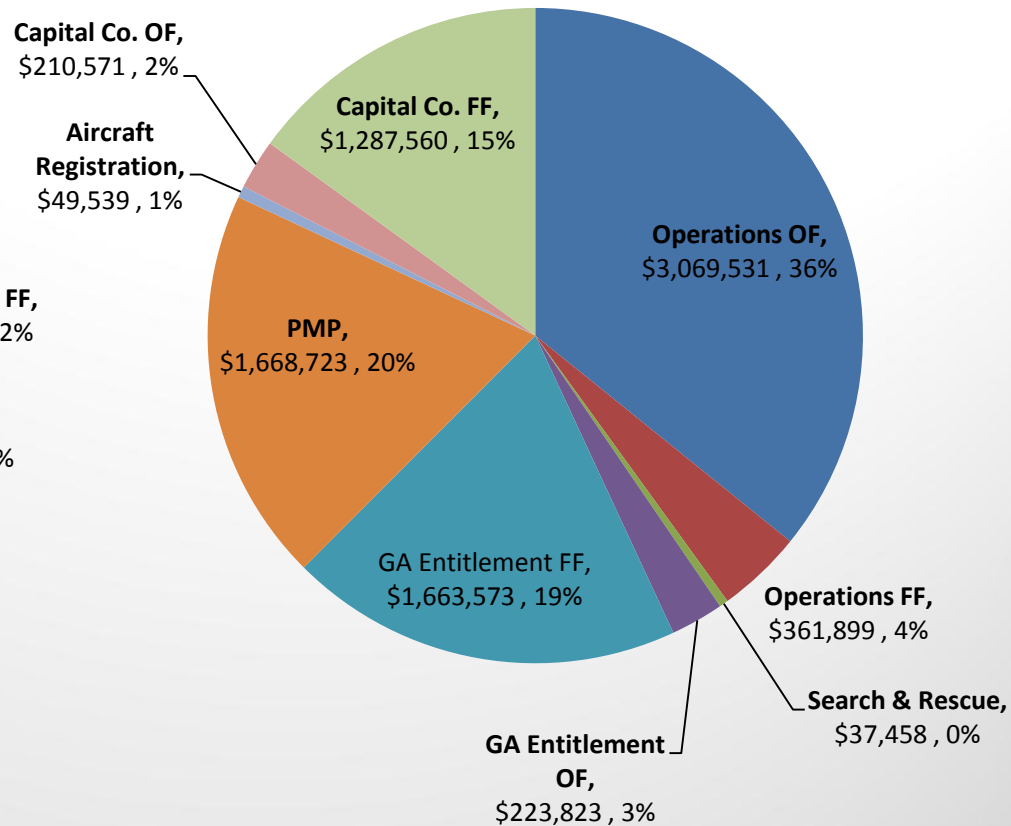
## 2015-17 Biennium

Program Actuals through 12/31/2016

### Revenues

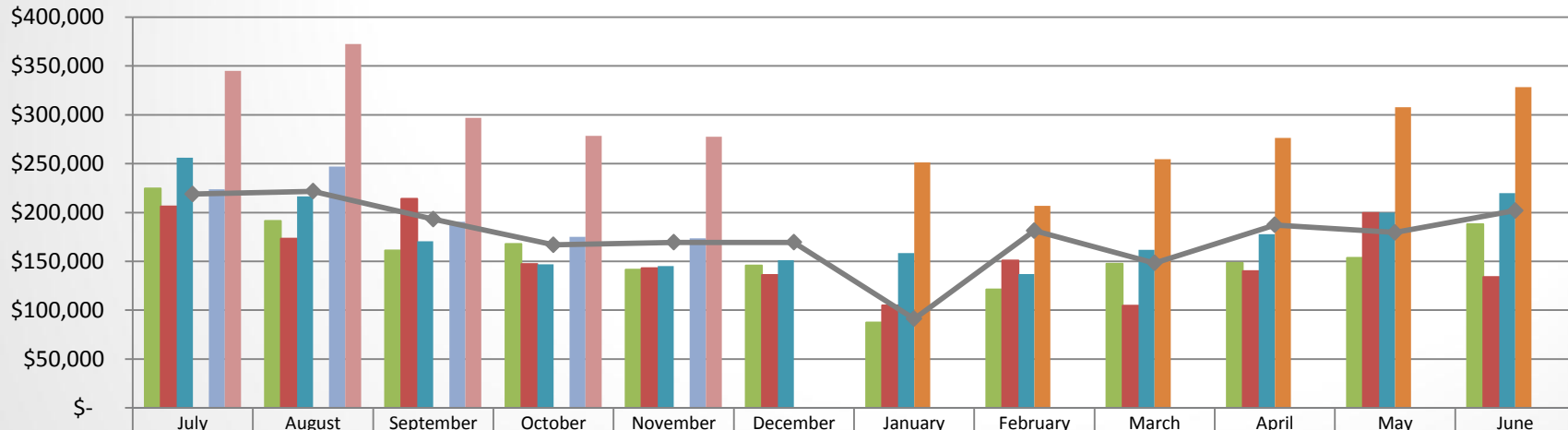


### Expenditures



# Agency Wide

## AV/Jet Fuel Revenue



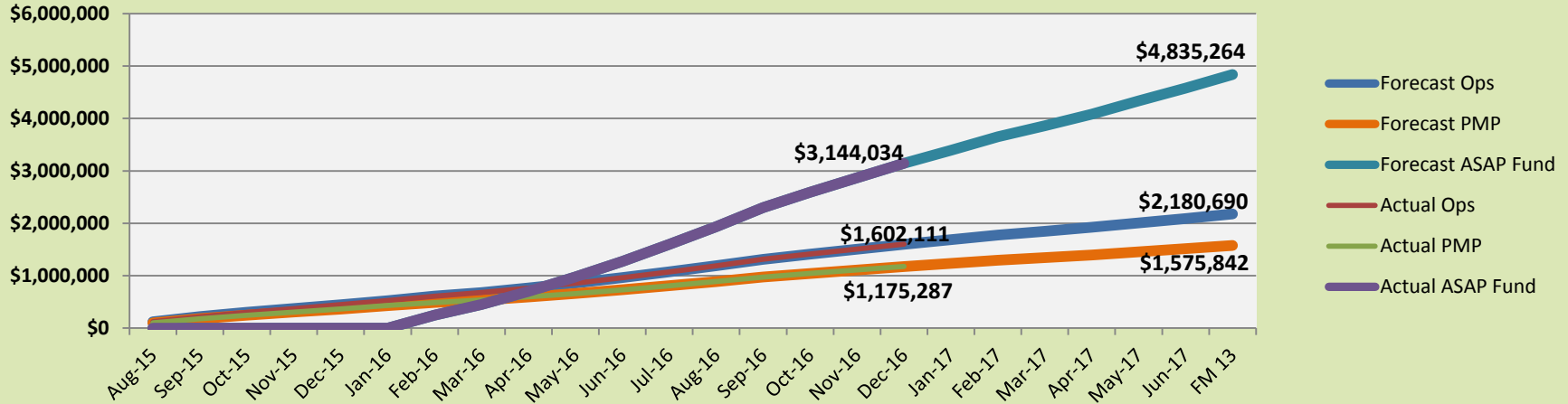
	July	August	September	October	November	December	January	February	March	April	May	June
FY 2014 Actuals	\$224,718	\$191,363	\$161,304	\$167,909	\$141,442	\$145,709	\$87,368	\$121,132	\$147,550	\$148,591	\$153,588	\$187,982
FY 2015 Actuals	\$206,264	\$173,147	\$214,172	\$147,397	\$143,020	\$136,017	\$104,821	\$150,991	\$104,745	\$139,995	\$199,434	\$133,905
FY 2016 Actuals	\$256,139	\$216,346	\$170,423	\$146,951	\$145,119	\$151,285	\$158,397	\$137,003	\$161,621	\$177,897	\$199,950	\$219,793
FY 2016 ASAP Fund Actuals	-	-	-	-	-	-	\$251,337	\$206,833	\$254,428	\$276,356	\$307,664	\$328,229
FY 2017 Actuals	\$223,882	\$246,955	\$190,415	\$175,153	\$173,547							
FY 2017 ASAP Fund Actuals	\$344,796	\$372,312	\$296,956	\$278,463	\$277,623							
Average FY 2006-2009	\$218,811	\$221,671	\$193,177	\$166,824	\$169,412	\$169,366	\$91,147	\$181,356	\$148,313	\$187,198	\$179,467	\$201,822

Note: Revenue is shown by month sold.

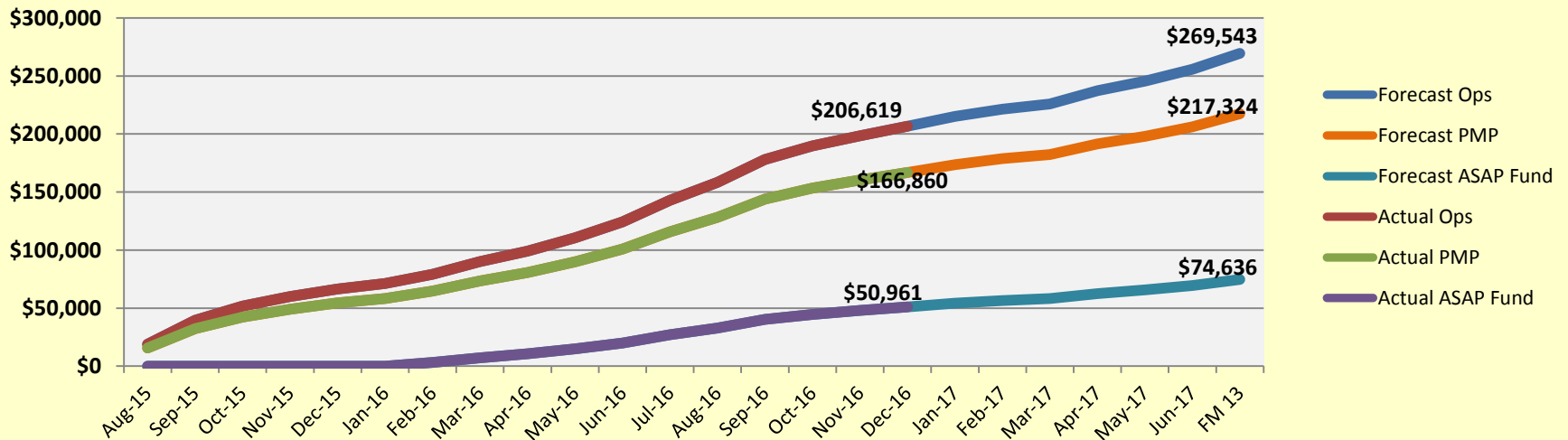
	Totals From the Chart
FY 2014	\$1,878,655
FY 2015	\$1,853,907
FY 2016	\$2,140,924
FY 2017	\$1,009,953
FY 2016 ASAP Actuals	\$1,624,847
FY 2017 ASAP Actuals	\$1,570,148
Sum of Avg. (FY 06-09)	\$2,128,563

# Agency Wide

### Cumulative Jet Fuel Revenue Totals

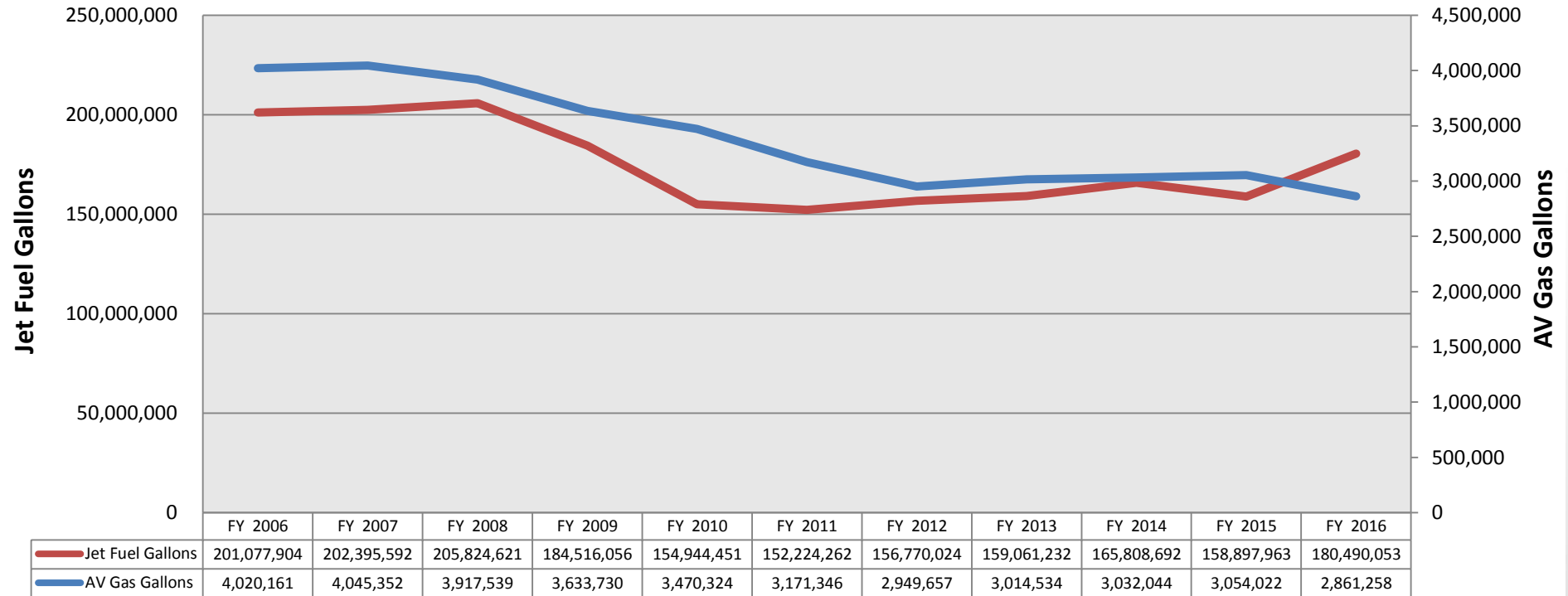


### Cumulative AV Gas Revenue Totals



# Agency Wide

**Annual Jet Fuel and Avgas Gallons**





# Agency Wide

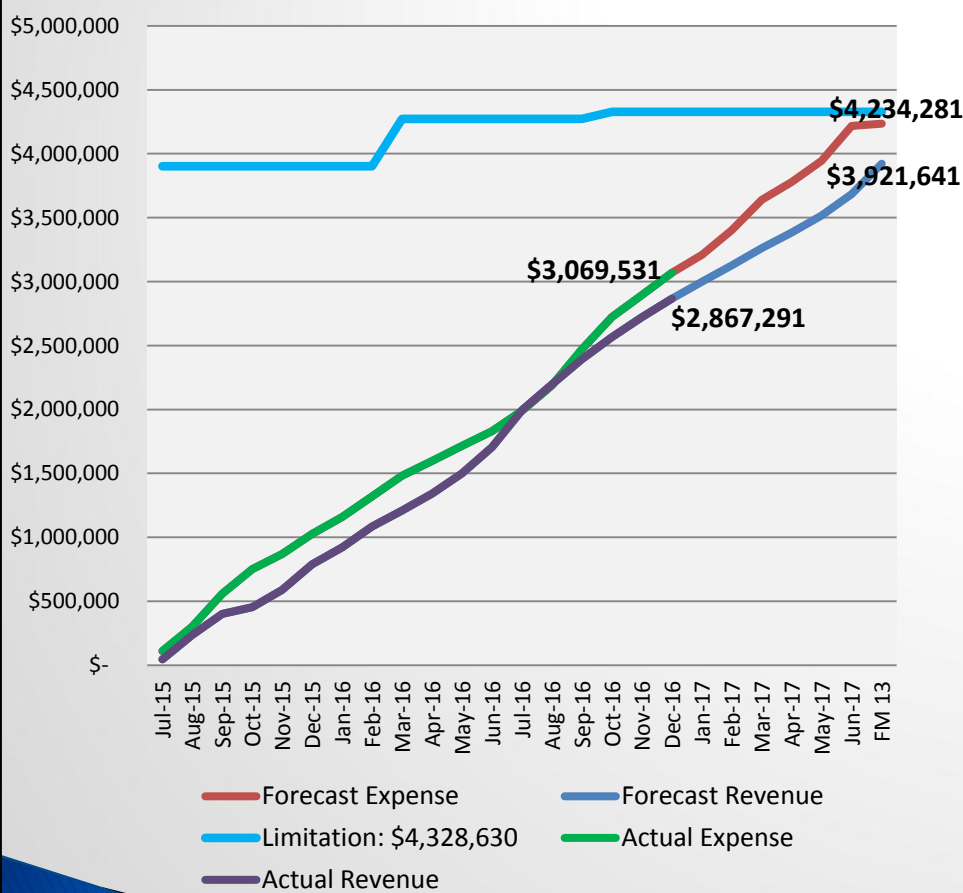
## Limitation and Cash Balances

As of December 31, 2016

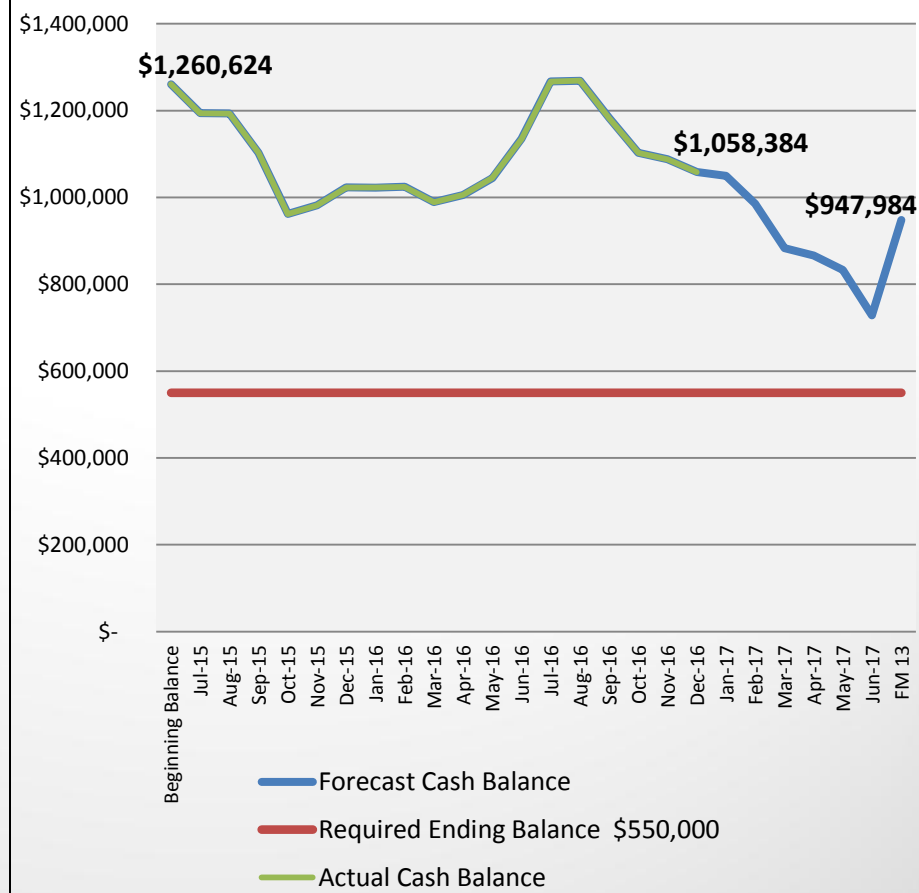
Appropriation	Airport or Program	Appn Year	Limitation	Expenditures to Date	Available Limitation	Remaining Encumbrances	Limitation Balance after Encumbrances	Cash Balances
<b>State Limitations</b>								
140	Operations	2017	\$ 4,328,630	\$ 3,069,531	\$ 1,259,099	\$ 295	\$ 1,258,804	\$ 1,058,383
141	Search & Rescue	2017	64,013	37,458	26,555		\$ 26,555	58,573
142	GA Entitlement-State	2017	5,346,102	341,447	5,004,655	20,441	\$ 4,984,214	2,959,301
143	Aircraft Registration	2017	67,709	49,539	18,170	-	\$ 18,170	767,225
144	Pavement Maintenance	2017	2,062,412	1,668,723	393,689	226,356	\$ 167,333	844,779
<b>Capital Construction - State Side</b>								
622	Cottage Grove Runway Rehab	2015	305,000	205,820	99,180	-	\$ 99,180	-
697	Condon Taxiway Renovation	2017	226,111	3,387	222,724	\$ 33,020	\$ 189,704	(2,711)
698	McDermitt Runway Rehab	2017	201,667	8,798	192,869	\$ 20,197	\$ 172,672	(493)
701	Aurora Apron Rehab	2017	130,000	125,890	4,110	-	\$ 4,110	3,443
<b>Federal Limitations</b>								
145	Operations-Federal Funds	2017	1,024,146	361,899	662,247	77,788	\$ 584,459	(139,759)
146	GA Entitlement-Federal Funds	2017	2,944,772	1,663,573	1,281,199	153,486	\$ 1,127,713	(245,175)
<b>Capital Construction - Federal Side</b>								
623	Cottage Grove Runway Rehab	2015	2,785,000	1,852,369	932,631	-	\$ 932,631	-
699	Condon Taxiway Renovation	2017	2,035,000	30,481	2,004,519	\$ 297,181	\$ 1,707,338	(11,593)
700	McDermitt Runway Rehab	2017	1,815,000	79,182	1,735,818	\$ 181,770	\$ 1,554,048	(5,032)
702	Aurora Apron Rehab	2017	1,170,000	1,133,010	36,990		\$ 36,990	11,273
								<u>\$ 5,291,973</u>

# Operations

### Operations Cumulative Totals



### ODA Operations Cash Balance







# Operations

## Oregon Department of Aviation

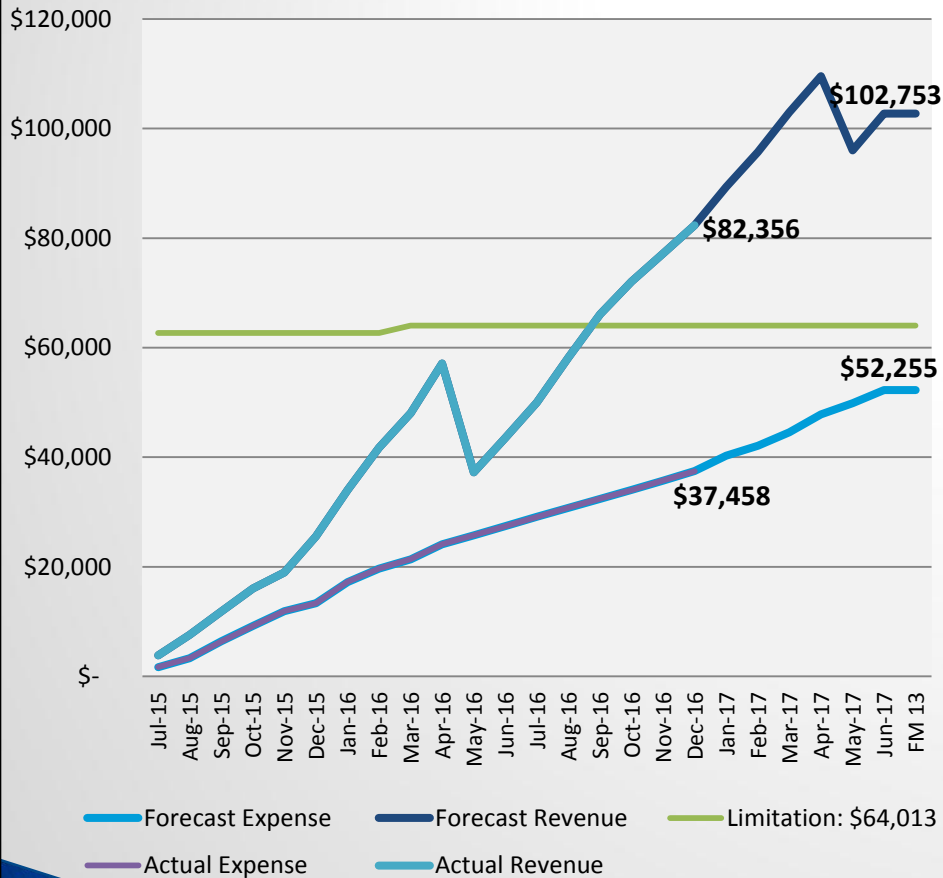
State Owned Airports

## State Owned Airports Profit/Loss Summary

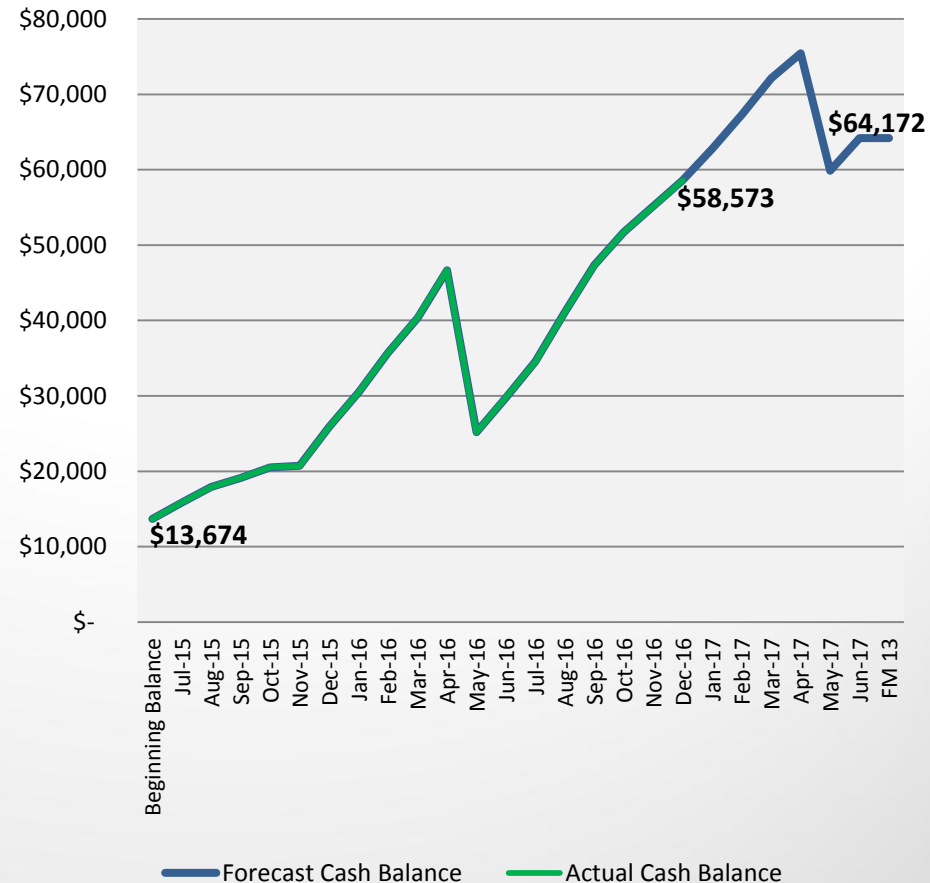
	2011-2013 Biennium			2013-2015 Biennium			Current Biennium		
							7/1/15 thru 12/31/16		
	Revenues	Expenditures	Profit/(Loss)	Revenues	Expenditures	Profit/(Loss)	Revenues	Expenditures	Profit/(Loss)
R03 ALKALI LAKE STATE AIRPORT	\$ -	3,739	\$ (3,739)	\$ 650	\$ 3,150	\$ (2,500)	\$ -	\$ 1,019	\$ (1,019)
UAO AURORA STATE AIRPORT	358,373	127,742	230,631	400,467	156,470	243,997	315,421	236,217	79,203
S05 BANDON STATE AIRPORT	19,174	44,447	(25,273)	17,223	17,252	(30)	14,527	26,040	(11,514)
5S6 CAPE BLANCO STATE AIRPORT	7,846	25,576	(17,730)	7,847	20,306	(12,460)	5,317	12,257	(6,939)
CZK CASCADE LOCKS STATE AIRPORT	1,139	12,970	(11,831)	3,231	9,837	(6,607)	475	9,140	(8,665)
2S7 CHILOQUIN STATE AIRPORT	5,142	20,514	(15,372)	4,965	7,778	(2,813)	4,124	5,891	(1,767)
3S9 CONDON STATE AIRPORT	3,930	7,470	(3,540)	4,826	7,893	(3,068)	6,008	8,647	(2,639)
61S COTTAGE GROVE STATE AIRPORT	113,050	161,196	(48,146)	96,457	143,149	(46,691)	61,969	73,660	(11,691)
5S2 CRESCENT LAKE STATE AIRPORT	650	32,100	(31,450)	650	1,738	(1,088)	203	1,269	(1,066)
7S5 INDEPENDENCE STATE AIRPORT	202,626	38,664	163,962	216,397	57,586	158,812	145,660	58,732	86,928
JSY JOSEPH STATE AIRPORT	93,273	194,053	(100,780)	190,253	235,468	(45,215)	102,154	146,059	(43,906)
S30 LEBANON STATE AIRPORT	57,064	72,332	(15,268)	49,671	96,020	(46,349)	36,387	19,389	16,998
26U MCDERMITT STATE AIRPORT	1,641	11,848	(10,207)	1,672	10,502	(8,829)	720	4,998	(4,278)
00S MCKENZIE BRIDGE STATE AIRPORT	-	3,157	(3,157)	-	2,359	(2,359)	-	1,264	(1,264)
4S9 MULINO AIRPORT	298,582	243,912	54,670	351,548	263,102	88,446	99,275	108,177	(8,903)
3S7 NEHALEM BAY STATE AIRPORT	650	3,901	(3,251)	-	2,441	(2,441)	270	5,300	(5,030)
5S0 OAKRIDGE STATE AIRPORT	2,555	9,579	(7,024)	4,359	8,499	(4,140)	1,648	5,782	(4,134)
28U OWYHEE RESERVOIR STATE AIRPORT	650	223	427	650	1,542	(892)	-	3,416	(3,416)
PFC PACIFIC CITY STATE AIRPORT	1,730	9,339	(7,609)	1,730	6,507	(4,777)	540	9,017	(8,477)
24S PINEHURST STATE AIRPORT	1,175	3,510	(2,335)	360	4,673	(4,313)	830	994	(164)
64S PROSPECT STATE AIRPORT	900	19,070	(18,170)	18,200	13,920	4,280	4,862	8,629	(3,768)
REO ROME STATE AIRPORT	2,750	3,028	(278)	650	2,848	(2,198)	-	575	(575)
8S3 SANTIAM JUNCTION STATE AIRPORT	-	1,469	(1,469)	650	2,100	(1,450)	650	1,112	(462)
S45 SILETZ BAY STATE AIRPORT	17,234	22,697	(5,463)	16,924	15,205	1,718	11,411	7,793	3,617
3S6 TOKETTEE STATE AIRPORT	596	7,329	(6,733)	650	4,127	(3,477)	-	699	(699)
5S4 TOLEDO STATE AIRPORT	2,821	4,197	(1,376)	2,099	4,493	(2,394)	2,405	4,177	(1,772)
R33 WAKONDA BEACH STATE AIRPORT	1,906	7,603	(5,697)	1,737	3,627	(1,890)	512	2,064	(1,552)
35S WASCO STATE AIRPORT	2,093	8,808	(6,715)	2,255	5,459	(3,204)	4,907	5,988	(1,081)
<b>State Owned Airport TOTALS</b>	<b>\$ 1,197,550</b>	<b>\$ 1,100,473</b>	<b>\$ 97,077</b>	<b>\$ 1,396,120</b>	<b>\$ 1,108,053</b>	<b>\$ 288,067</b>	<b>\$ 820,273</b>	<b>\$ 768,305</b>	<b>\$ 51,968</b>

# Search & Rescue

### Search & Rescue Cumulative Totals

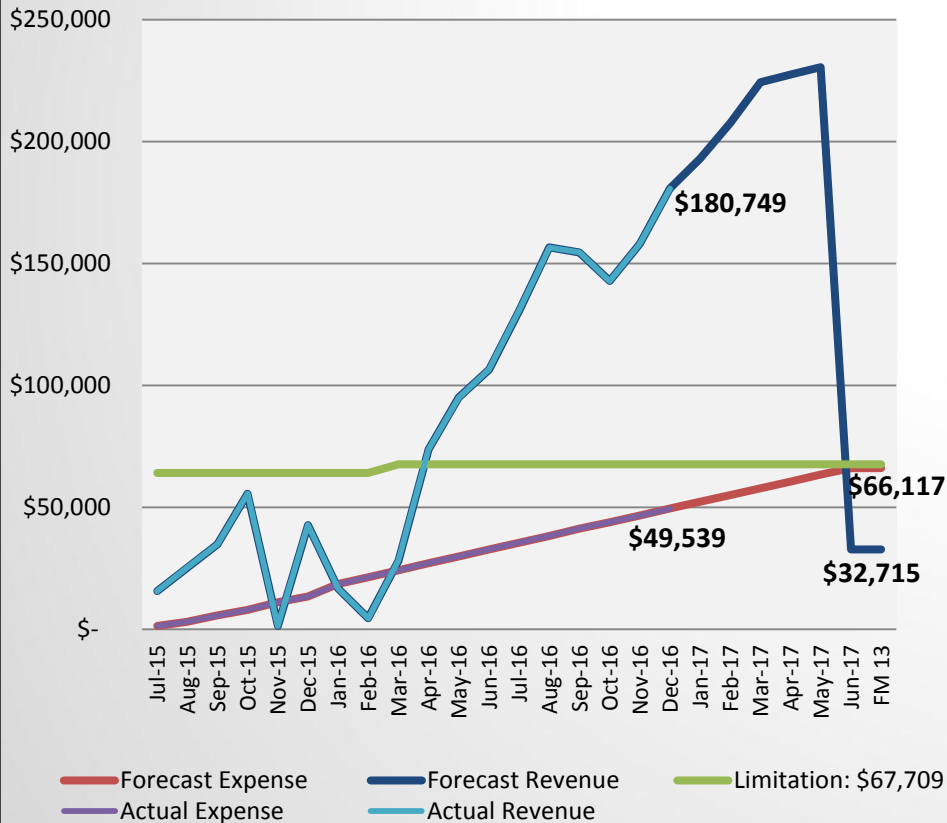


### Search & Rescue Cash Balance

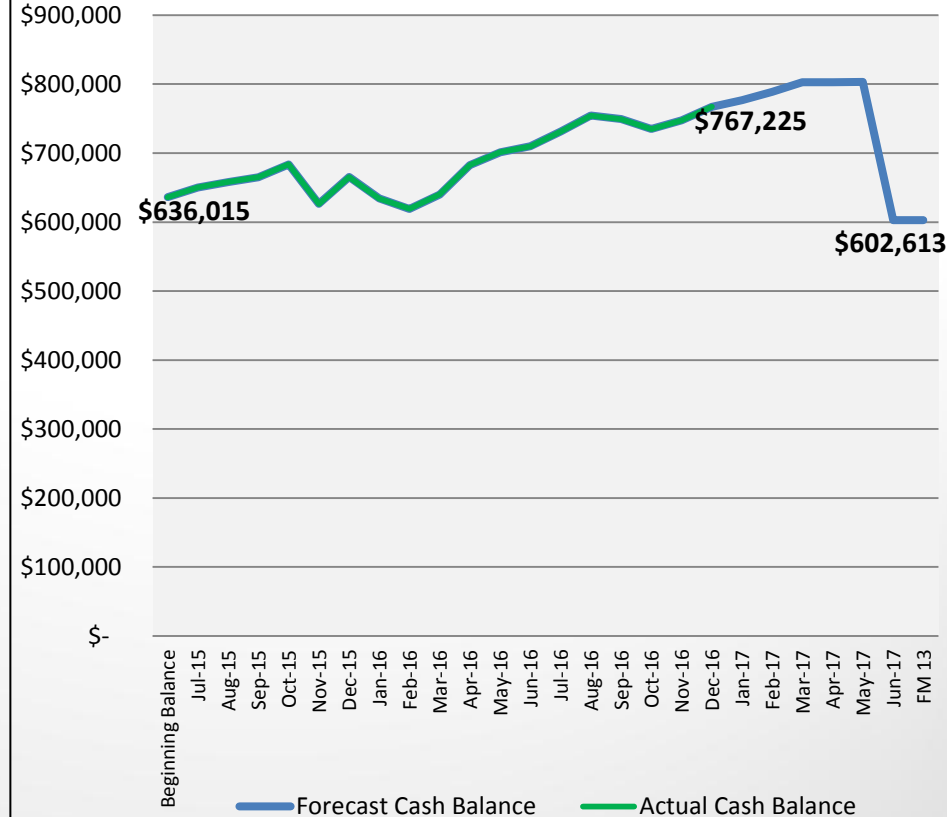


# Aircraft Registration

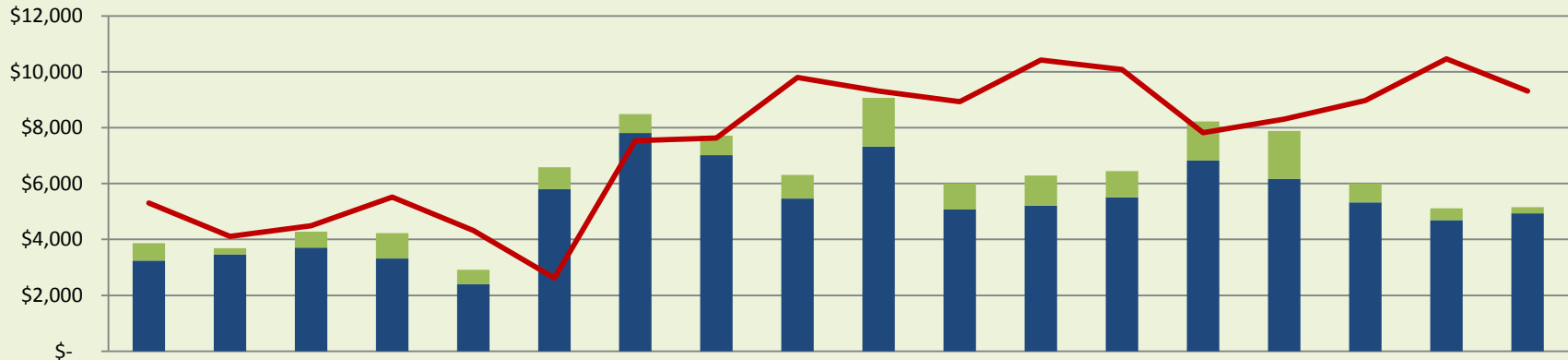
### Aircraft Registration Cumulative Totals



### Aircraft Registration Cash Balance

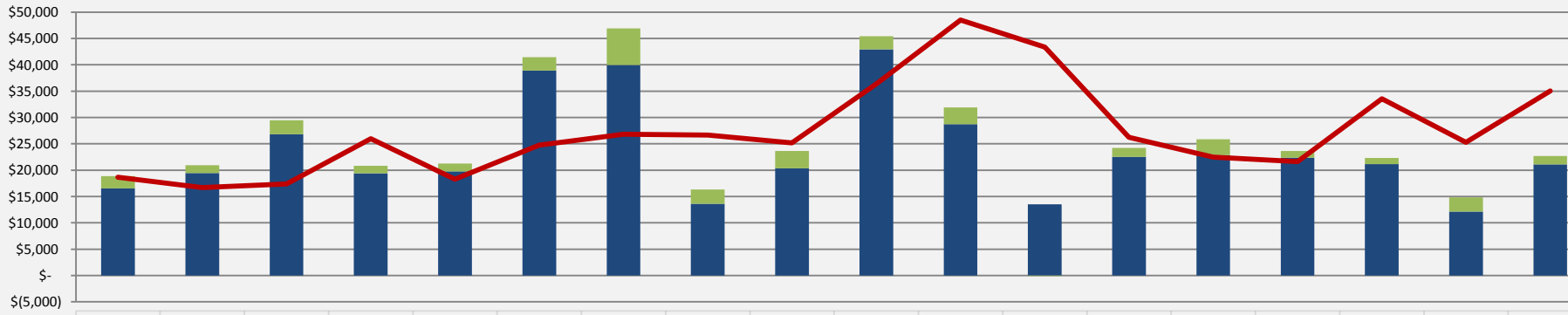


### Pilot Registrations - Actual vs. Renewals Due



	Jul-15	Aug-15	Sep-15	Oct-15	Nov-15	Dec-15	Jan-16	Feb-16	Mar-16	Apr-16	May-16	Jun-16	Jul-16	Aug-16	Sep-16	Oct-16	Nov-16	Dec-16
<b>New Pilots &amp; Dup. Reg.</b>	\$629	\$221	\$569	\$912	\$516	\$785	\$676	\$693	\$845	\$1,745	\$936	\$1,081	\$936	\$1,395	\$1,716	\$672	\$432	\$216
<b>Renewal Revenue</b>	\$3,240	\$3,469	\$3,706	\$3,312	\$2,400	\$5,796	\$7,805	\$7,019	\$5,459	\$7,320	\$5,068	\$5,207	\$5,508	\$6,828	\$6,168	\$5,329	\$4,686	\$4,936
<b>Renewals Due</b>	\$5,304	\$4,104	\$4,488	\$5,520	\$4,320	\$2,616	\$7,536	\$7,632	\$9,792	\$9,312	\$8,928	\$10,416	\$10,080	\$7,824	\$8,304	\$8,976	\$10,464	\$9,312

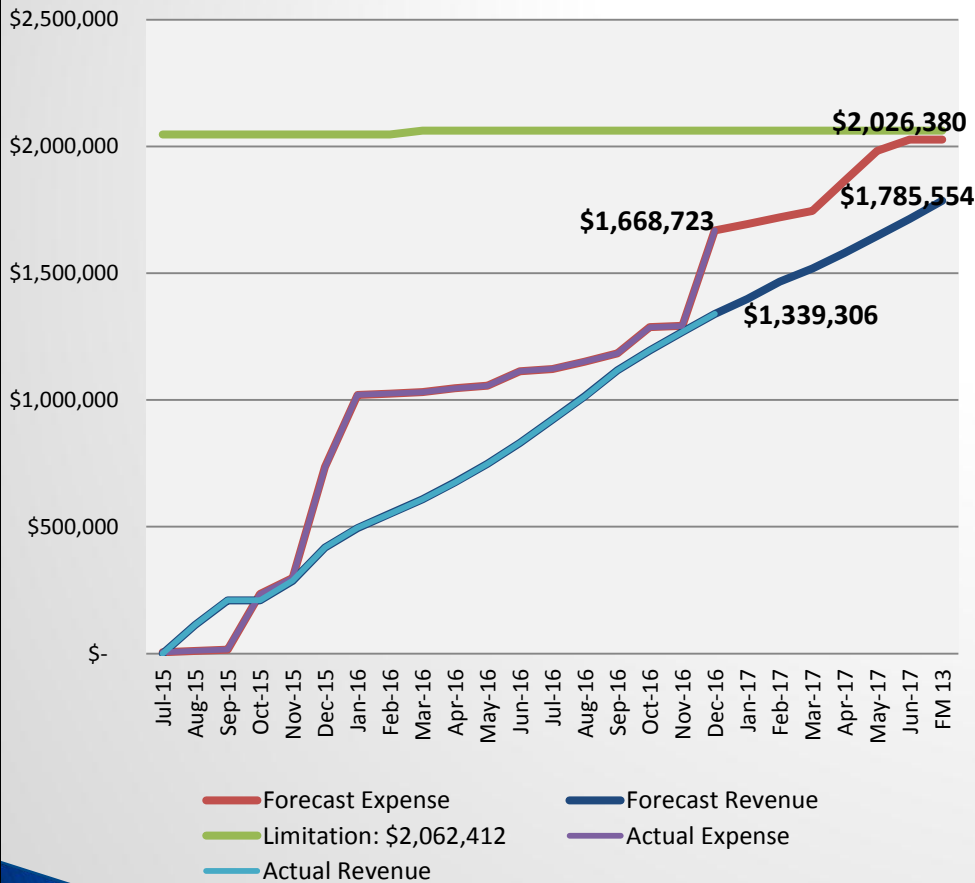
### Aircraft Registration – Actual Revenue vs. Renewals Due



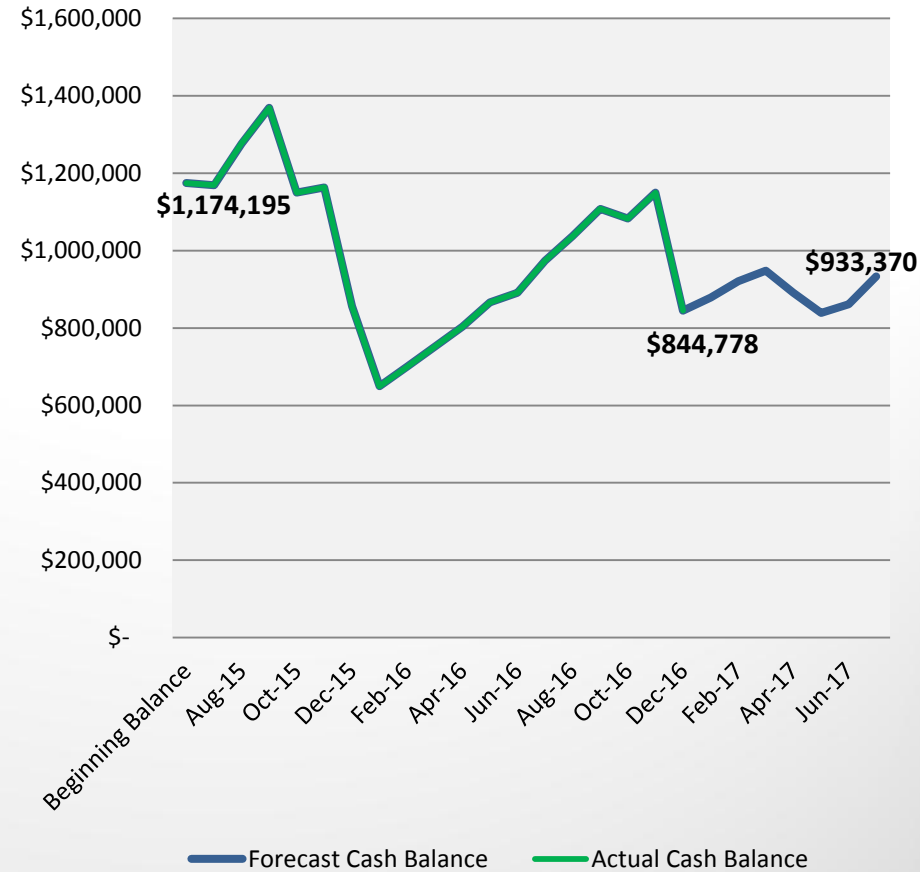
	Jul-15	Aug-15	Sep-15	Oct-15	Nov-15	Dec-15	Jan-16	Feb-16	Mar-16	Apr-16	May-16	Jun-16	Jul-16	Aug-16	Sep-16	Oct-16	Nov-16	Dec-16
<b>New Reg., Transfers, &amp; Duplicates</b>	\$2,330	\$1,470	\$2,650	\$1,415	\$1,455	\$2,550	\$6,939	\$2,699	\$3,327	\$2,461	\$3,180	\$(114)	\$1,653	\$3,043	\$1,285	\$1,205	\$2,700	\$1,612
<b>Actual Renewals</b>	\$16,520	\$19,439	\$26,810	\$19,390	\$19,780	\$38,895	\$39,976	\$13,615	\$20,325	\$42,950	\$28,728	\$13,516	\$22,550	\$22,841	\$22,345	\$21,120	\$12,148	\$21,068
<b>Renewals Due</b>	\$18,660	\$16,680	\$17,400	\$25,950	\$18,290	\$24,750	\$26,835	\$26,655	\$25,170	\$36,370	\$48,505	\$43,365	\$26,245	\$22,490	\$21,605	\$33,565	\$25,290	\$35,050

# Pavement Maintenance Program

### PMP Cumulative Totals

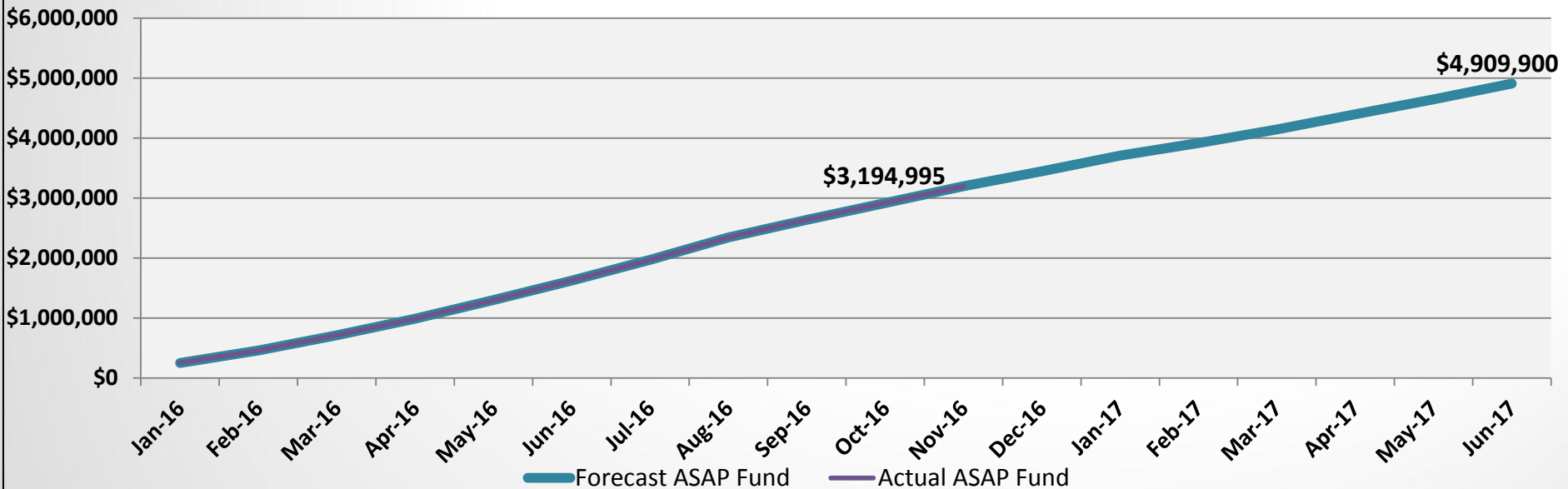


### PMP Cash Balance



# General Aviation Entitlement

## Cumulative ASAP Revenue Totals



### ASAP Fund Revenue through 12/31/2016

Program	Revenue	% of total ASAP fund
ROAR	\$798,632	25%
SOAR	\$798,632	25%
COAR	\$1,597,731	50%