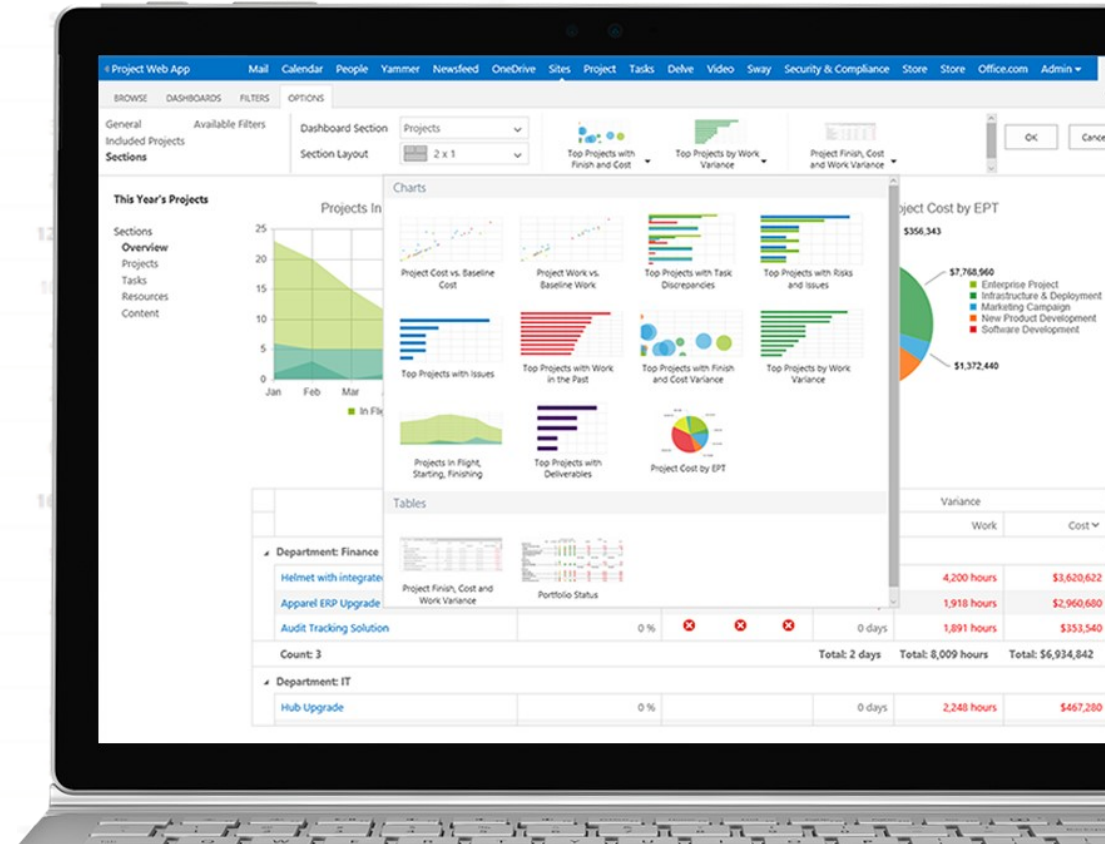


Microsoft Project & Portfolio Management



Harness the power of project portfolio management (PPM) capabilities to effectively plan, prioritize, and manage project and portfolio investments.



Leon Gallegos



I have had the opportunity to work with a wide range of customers and students worldwide as a senior PPM consultant and trainer for MS Project Pros (MPP).

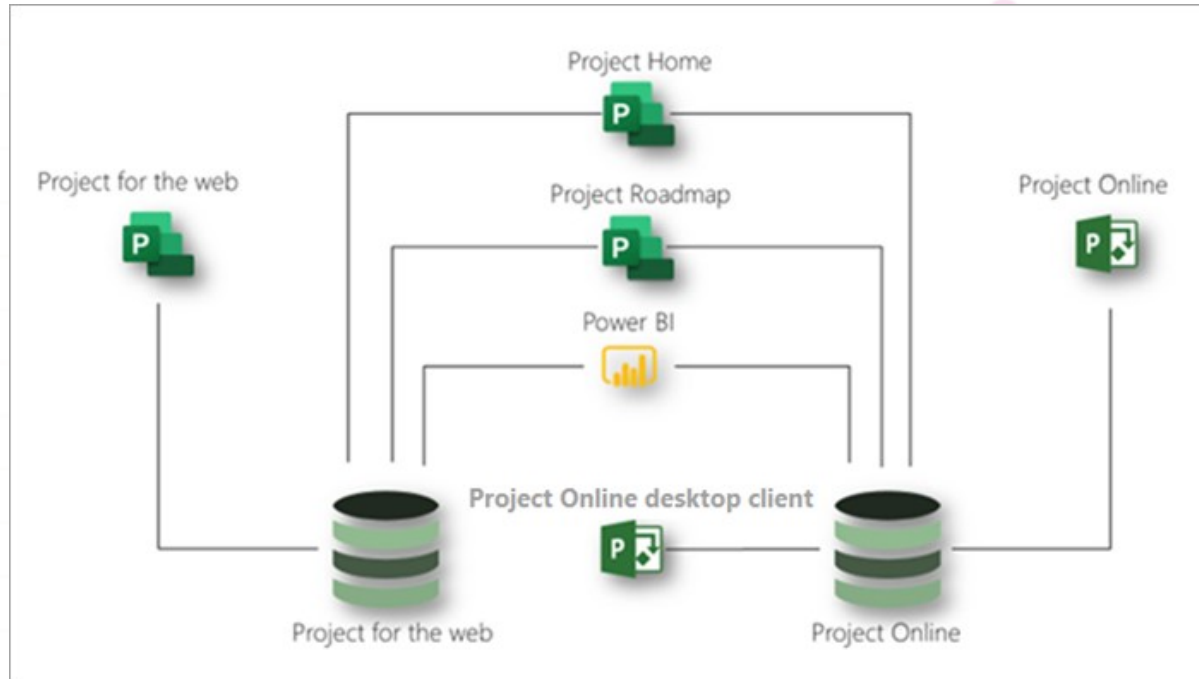
MPP provides consulting and training in the Microsoft PPM space. Learn more at msprojectpros.com.

Microsoft Certified IT Professional

The collage features logos for the following organizations: Huntington Learning Center, Federal Aviation Administration, Kellogg's, Guthy-Renker, Pepsico, Trane, National Instruments, Knowledge Systems, Cogun, PwC, Lifecare Hospitals, Wells Fargo, and EY. The logos are arranged in a grid-like fashion across the bottom half of the slide.

Microsoft PPM

1	Develop email campaign	100%	8 days	10/21/2019
2	Target audience profile	100%	5 days	10/21/2019
3	Create email storyboard	100%		
4	Marketing approval of storyboard	100%		



PPM Landscape



Microsoft PPM Tools & Services



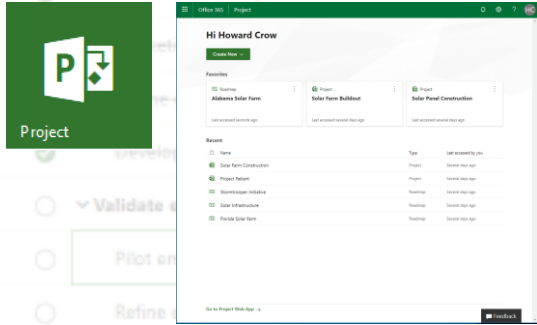
Usage Scenarios & Demo

18	Generate target audience emails	0%		Rickey Broadnax	
19	Analyze results	0%	5 days	12/10/2019	
	Analyze and report on 1st hour responses	0%	1 day	18	12/10/2019
	Update email response links	0%	1 day	20	12/11/2019
22	Analyze and report on 1st day responses	0%	1 day	18	12/10/2019

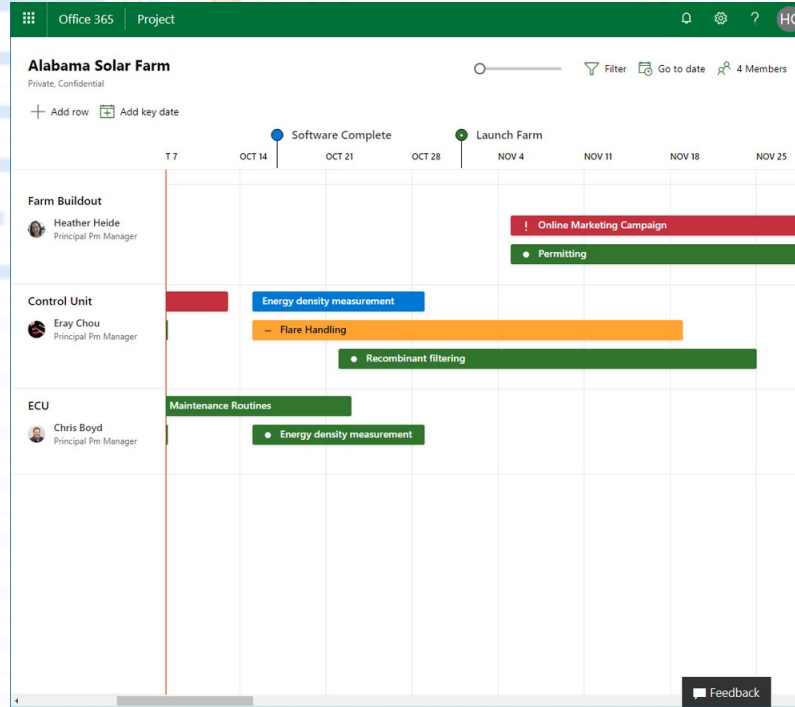


PPM Landscape

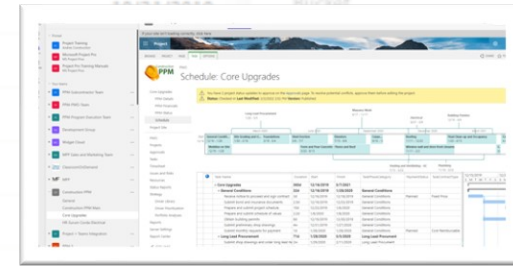
Project Online



Roadmap



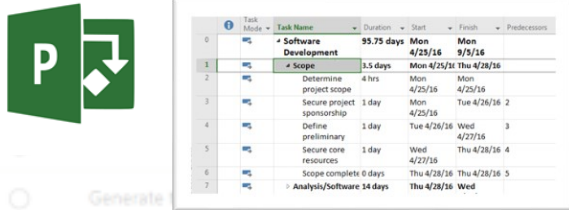
Project for the Web (P4W)



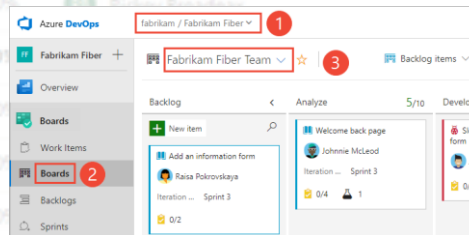
Teams



Project Professional



Azure DevOps Boards



Planner



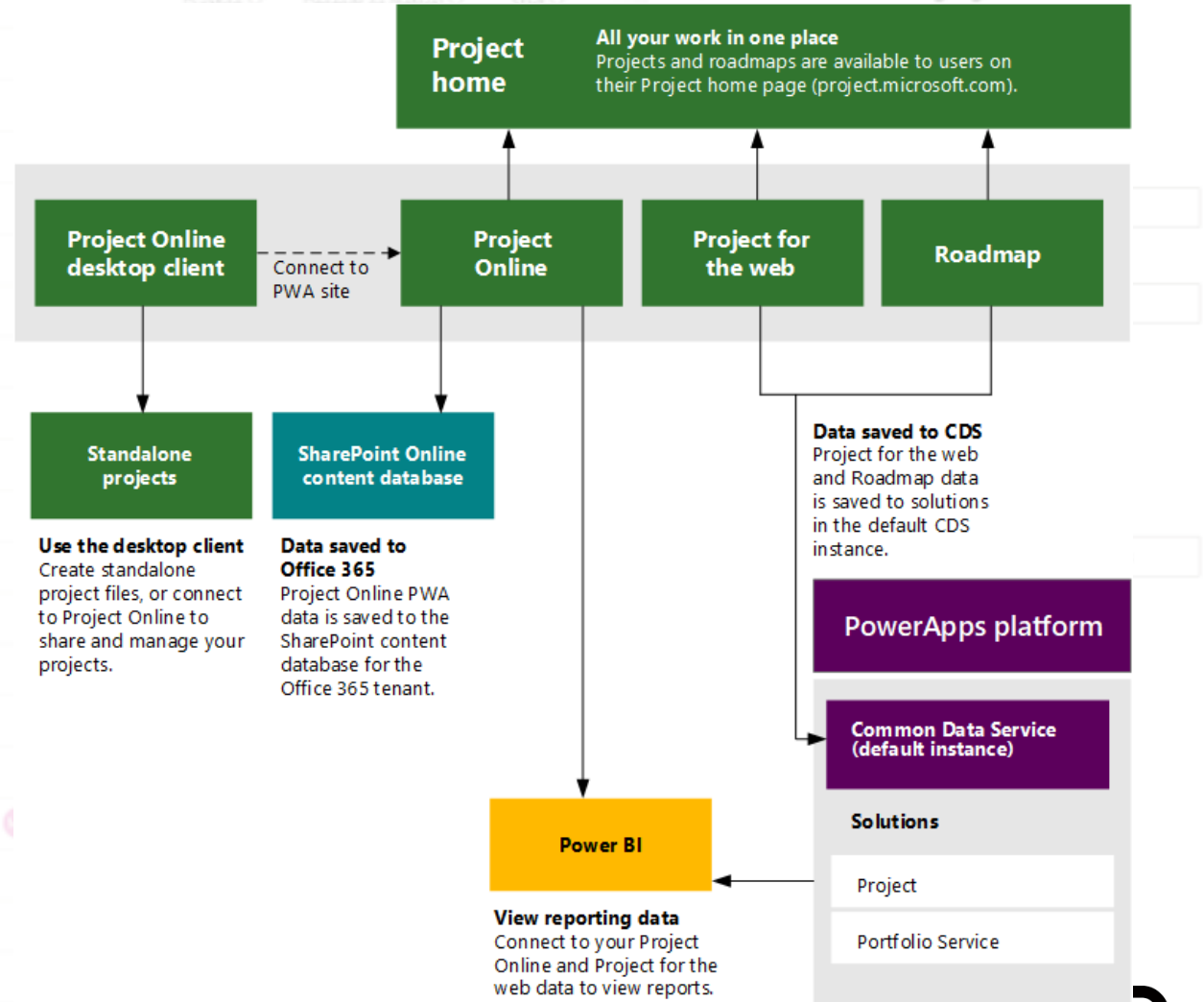
MS PPM Tools & Services

Project for the web is Microsoft's most recent offering for cloud-based work and project management.

Project for the web is built on the **Microsoft Power Platform**.

Project for the web data is stored in **CDS (DataVerse)**.

Many licensing options exist



Usage Scenarios

Enterprise Project Management (P1, P3, P5)

- Applies to a large organization whose area of focus is top-down planning driven through the Project Management Office (PMO)
- More frequently seen in the product development and manufacturing markets

Time tracking (P3, P5)

- Applies to professional services
- Mainly used to capture and report time
- Employees and contractors use timesheet functionality to submit hours worked on tasks during specific time periods

Demand & Work Management (P1, P3, P5)

- Applies to any medium-to-large organization that want to use Microsoft PPM to manage project demand and work requests and workflow routing
- Lightweight Project & Task Management

