

Map 3C: Eastern Oregon Surface Water
Drinking Water Source Areas
with DOGAMI Landslide Inventory*

(*): Landslide Information
OR Department of Geology and Mineral Industries (DOGAMI)
Statewide Landslide Information Database of Oregon Release 3.2
(SLIDO-3.2). Includes earth and debris slides, flows, slumps, falls
and complex landslide types. Does not include rock material
landslide deposits. The landslide data set is published to improve
the understanding of landslide hazards in Oregon and to provide a
statewide base level of landslide data. This product is for
informational purposes and may not have been prepared for or be
suitable for legal, engineering, or surveying purposes. Users of this
information should review or consult the primary data and
information sources to ascertain the usability of the information. This
publication cannot substitute for site-specific investigations by
qualified practitioners. Site-specific data may give results that differ
from the results shown in the publication. For more information see:
<http://www.oregongeology.org/sub/slido/>
OR DEQ's Water Quality Program is currently working with DOGAMI
to develop and provide a more detailed landslide potential analysis
for public water systems. Contact Oregon DEQ's Environmental
Solutions Division/Water Quality Program for further information on
the analysis. If data is available for the specific area, DEQ will
provide the more detailed landslide analysis to the public water
system.

Drinking water source area - delineated as the 5th-field watershed
upstream of a public water supply (PWS) intake. Note that Oregon's
surface water source areas are delineated intake to intake. For
watersheds with more than one intake, the DWSA is the watershed
segment from the PWSs intake to the next intake upstream. All
protection areas upstream of a specific water system's intake are
included in the drinking water source area for that water system and
PWSs are encouraged to work with other water providers and other
entities within the Subbasin as they evaluate land use and move
forward with developing protection strategies.

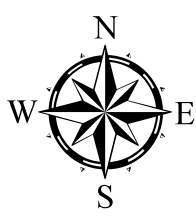
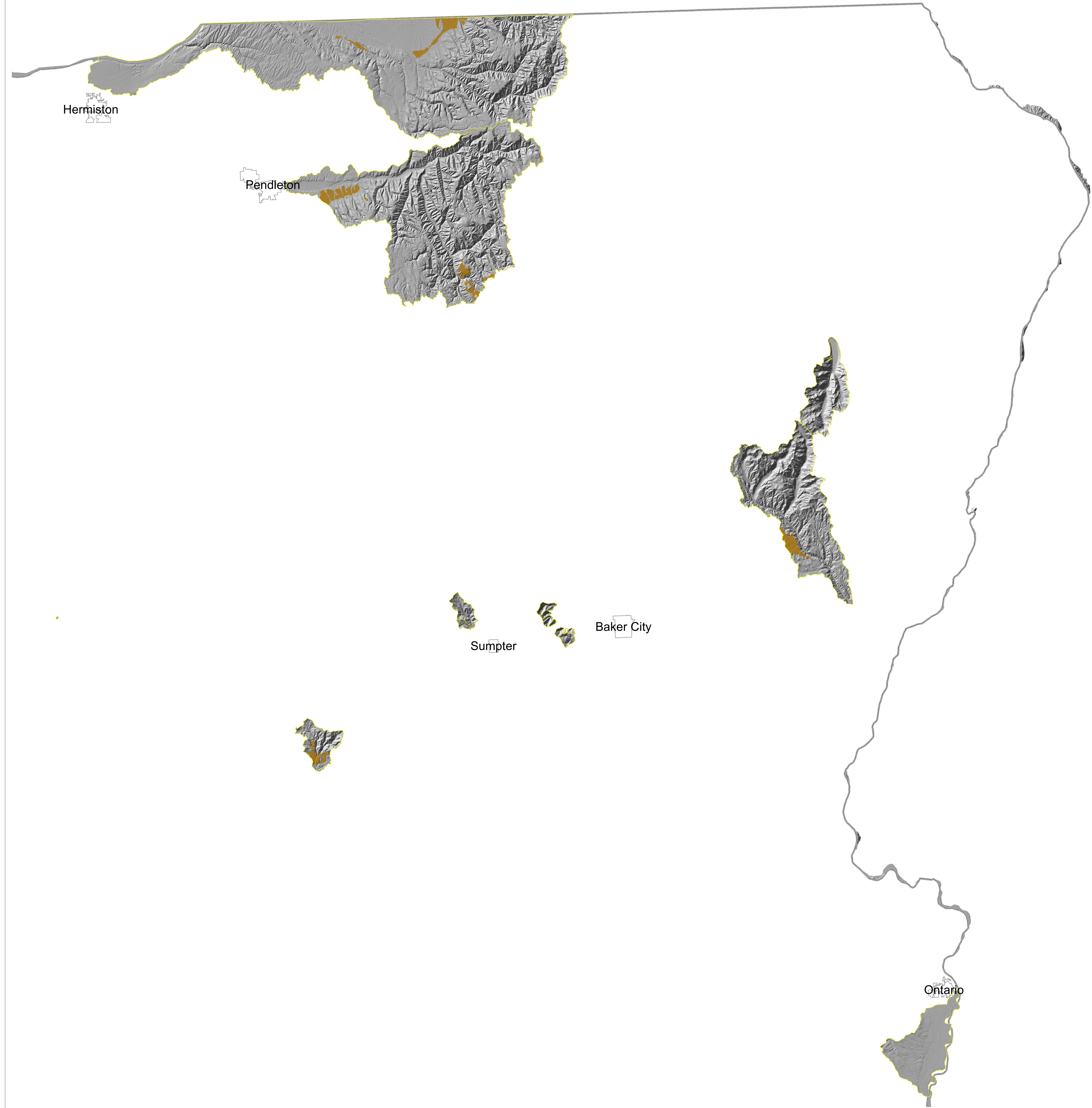
Source areas for public water systems using groundwater can be
provided upon request. Also note there are a number of public
transient non-community and private domestic drinking water intakes
that are not identified on this map.

The land cover layer is a combination of multiple datasets that have
been modified by grouping land owner categories in order to simplify
data display on the map. See Notes for data sources, methods, and
data limitations. The land cover layer can also be viewed using
DEQ's interactive map viewer available at
<http://www.oregon.gov/deq/wq/programs/Pages/DWP-Maps.aspx>.

Legend

- Surface Water Drinking Water Source Area
- City Limits (selected cities,2016)
- Scarp Flanks (DOGAMI SLIDO-3.2)
- Landslide Deposits (non-rock material, includes
earth and debris slides, flows, slumps, falls and
complex) (DOGAMI SLIDO3.2)
- DOGAMI Scarps (DOGAMI SLIDO-3.2)

HillShade (digital elevation model, 10 meter)



0 5 10 20 30 40 Miles

1:320,000