



Oregon PaintCare Program

Oregon DEQ Annual Stakeholder Meeting

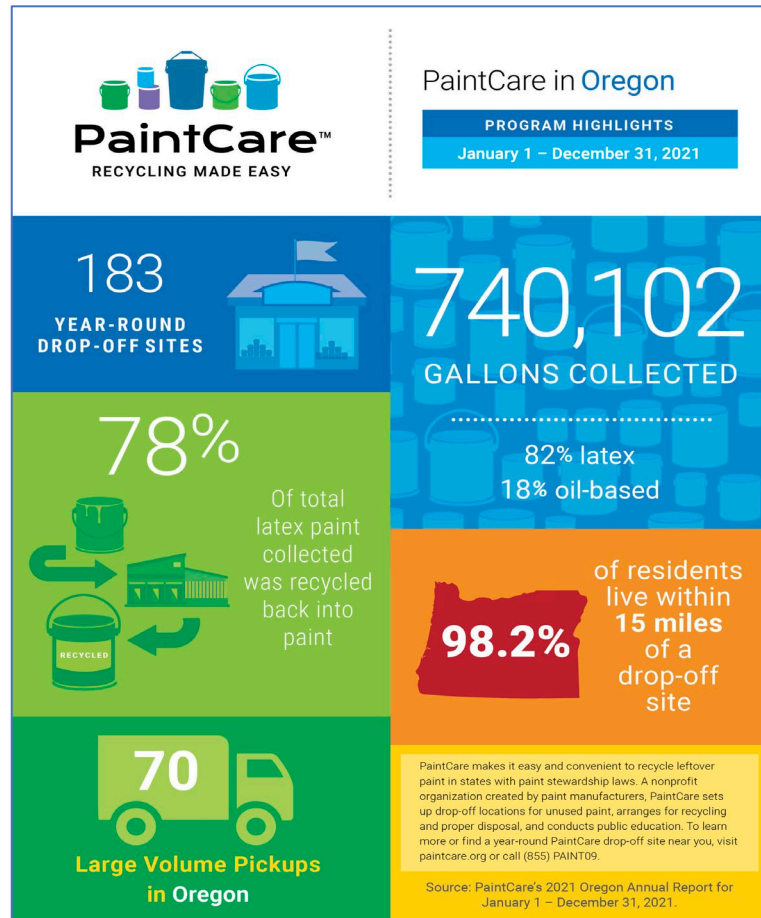
November 8, 2022 | Portland, OR





Overview

- Our Team
- Paint drop-off sites and services
- PaintCare drop-off events
- Paint collected
- Program finances
- Communications
- Program awareness and source reduction studies
- Looking ahead





Our Team

- Lauren Scher – OR and WA Program Manager
- Kim Harless – OR and WA Program Coordinator (Multnomah County)
- Bailey Payne – OR Program Coordinator (all other Oregon Counties)

Paint Drop-Off Sites and Services

YEAR-ROUND DROP-OFF SITES

Site Type	2019	2020	2021
Environmental Services Company	0	0	1
Household Hazardous Waste Facility	6	6	6
Paint Recycler	0	0	1
Paint Retailer	121	125	132
Reuse Store	26	24	24
Transfer Station	19	19	19
Total Sites	172	174	183

Paint Drop-Off Sites and Services

SUPPLEMENTAL DROP-OFF SITES

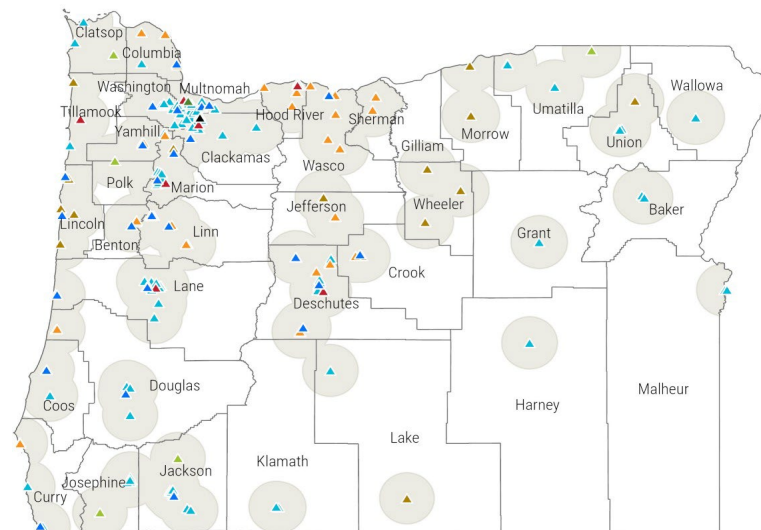
Site Type	2019	2020	2021
Household Hazardous Waste Event Site/Number of Events	43/64	20/23	26/31
Household Hazardous Waste Facility (Seasonal)	3	3	3
PaintCare Event Site/Number of Events	4/4	4/4	5/5
Paint Retailer (Partial Year)	2	2	0
Reuse Store (Partial Year)	0	2	1
Total Sites	52	31	35

Site/Service Type	2019	2020	2021
Direct Large Volume Pickup Site/Number of Pickups	38/43	46/63	61/70
Recurring Large Volume Pickup Site	11	14	15

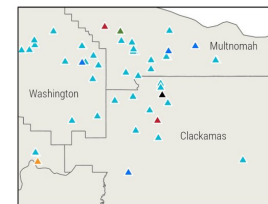


Paint Drop-Off Sites and Services

- 183 year-round sites
- HHW events partially resumed following pause due to the pandemic
- 98.2% of Oregonians live within 15 miles of a drop-off site (supplemental sites included)



- ▲ Environmental Service Company
- ▲ Household Hazardous Waste Event Site
- ▲ Household Hazardous Waste Facility
- ▲ Paint Recycler
- ▲ Paint Retailer
- ▲ PaintCare Event Site
- ▲ Reuse Store
- ▲ Transfer Station
- Area Served within 15 Miles



PaintCare Drop-Off Events

PaintCare was able to host five collection events in 2021.

Events included a reuse table, in which paint in good condition was made available to the public for free.

- Cave Junction
- Jewell
- Shady Cove
- Willamina
- Milton-Freewater



Shady Cove (Jackson County)



Shady Cove Public Works (September 2021)

Jewell (Clatsop County)



Jewell School (June 2021)



Paint Collected

- A total of 740,102 gallons of paint were collected during the year
 - 82% latex
 - 18% oil-based
- 81% latex recycling rate



Paint Collected

GALLONS COLLECTED, SOLD, AND RECOVERY RATE

Description	2019	2020	2021
Paint Collected (gallons)	767,088	706,270	740,102
New Paint Sold (gallons)	8,933,181	9,707,796	9,324,208
Recovery Rate	8.6%	7.3%	7.9%

While sales decreased, the amount of paint collected increased, resulting in a rebound of the recovery rate to 7.9%

Program Finances

Revenue	2019	2020	2021
Total Revenue	5,669,810	6,391,504	6,004,763

Expenses	2019	2020	2021
Paint Processing and Transportation	4,110,650	4,280,130	4,724,976
Paint Collection Supplies and Support	15,547	16,389	73,523
Communications	40,951	33,851	44,445
Personnel, Professional Fees, Other	151,985	133,535	141,454
State Agency Administrative Fees	40,000	40,000	40,000
Loan Interest	16,202	8,782	0
Allocation of Corporate Activity	299,140	286,341	305,546
Total Expenses	4,674,475	4,799,028	5,329,944



Program Awareness and Source Reduction Studies

- Conducting studies to set baseline measurements & gather information
- Studies are now complete, results being analyzed
- Results will inform goal setting amendments to program plan in these areas
- PaintCare to submit program plan amendments by end of 2022



Communications



Old Brand



PaintCare™

RECYCLING MADE EASY

Since May 2021



Looking Ahead

- Continuing to add drop-off sites (including first year-round site in Polk County)
- Conducted 5 PaintCare collection events in 2022
 - Cave Junction
 - Rogue River
 - Shady Cove
 - Milton-Freewater
 - Willamina
- 2023 - Potential reuse focused events in Oregon

Thank
you!



Contacting Us

Kim Harless
Oregon & Washington
Program Coordinator
kharless@paint.org
360-450-1639

Lauren Scher
Oregon & Washington
Program Manager
lscher@paint.org
503-410-1648

Bailey Payne
Oregon Program
Coordinator
bpayne@paint.org
541-452-3586