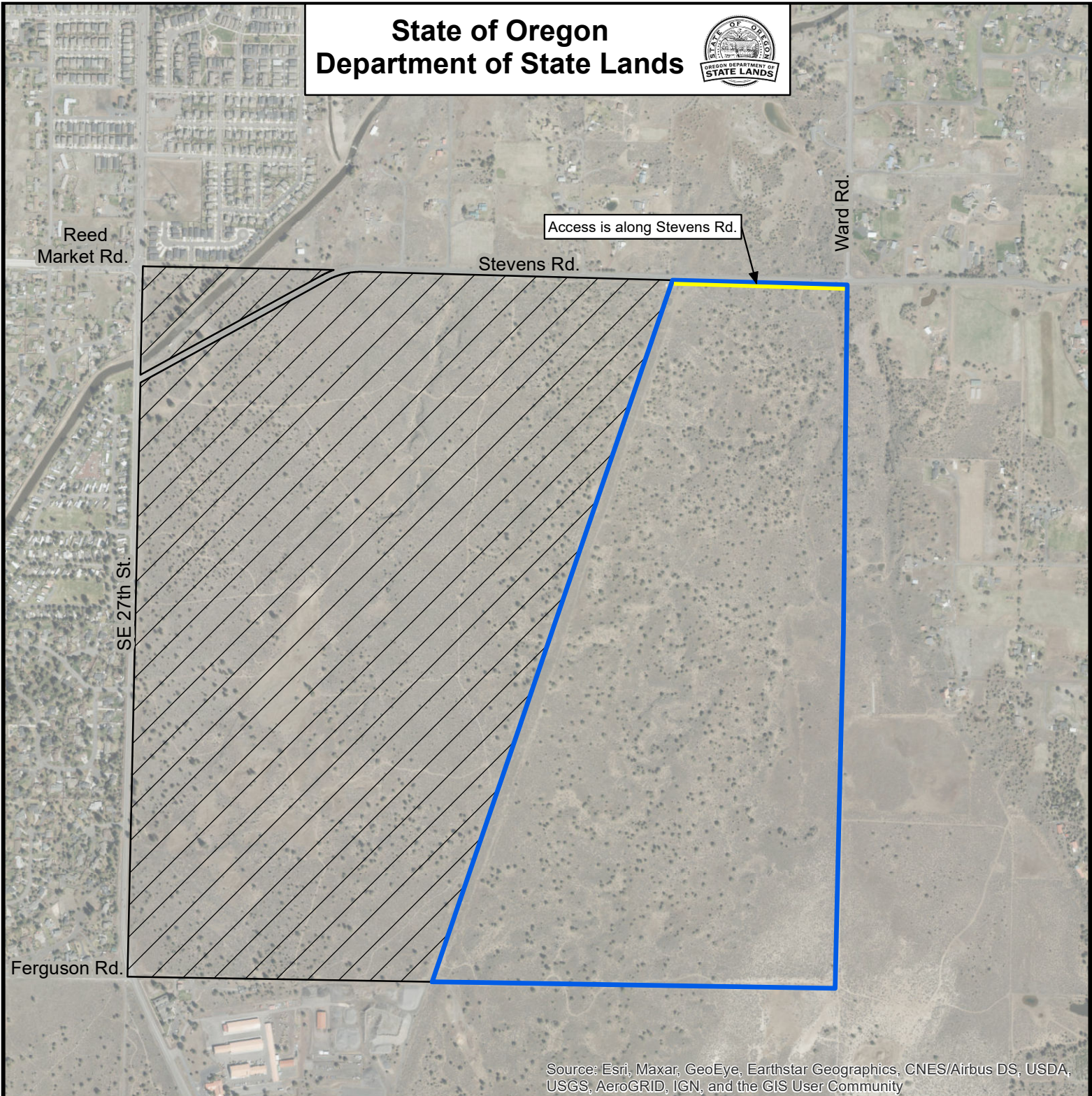




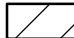
State of Oregon
Department of State Lands



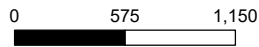
Source: Esri, Maxar, GeoEye, Earthstar Geographics, CNES/Airbus DS, USDA, USGS, AeroGRID, IGN, and the GIS User Community

Stevens Road Tract

T18S, R12E, Section 11
Deschutes County

-  Stevens Road Tract
-  Steven Road Tract Access
-  Area Sold

This product is for informational purposes only and has not have been prepared for, nor is suitable for legal, engineering, or surveying purposes. Users of this information should review or consult the primary data and information sources to ascertain the usability of the information.



Map Projection:
Oregon Statewide Lambert
Datum NAD83
International Feet
State of Oregon
Department of State Lands
775 Summer St NE, Suite 100
Salem, OR 97301
503-986-5200
www.oregon.gov/DSL
Date: 9/13/2021

