

REQUEST TO AMEND
THE SITE CERTIFICATE FOR
SHEPHERDS FLAT NORTH

PREPARED FOR THE
OREGON ENERGY FACILITY SITING COUNCIL

PREPARED BY
NORTH HURLBURT WIND, LLC

NOVEMBER 3, 2009

TABLE OF CONTENTS

SECTION	CONTENTS
	TABLE OF CONTENTS
I	SUMMARY OF THE AMENDMENT REQUEST
II	CERTIFICATE HOLDER AND PROPERTY OWNER INFORMATION
III	DESCRIPTIONS AND ANALYSIS
IV	COUNCIL STANDARDS AND ANALYSIS
V	SITE MAPS

SUMMARY OF THE AMENDMENT REQUEST

REQUEST

North Hurlburt Wind, LLC, Certificate Holder for Shepherds Flat North (“SFN”), requests expansion of the SFN site boundary to accommodate the option to use an alternative transmission route.

This Request is one of three companion Requests jointly submitted by North Hurlburt Wind, LLC, South Hurlburt Wind, LLC and Horseshoe Bend Wind, LLC (Amendments #1 of the Site Certificates for SFN, Shepherds Flat Central and Shepherds Flat South respectively). In addition to requesting the option to use the alternative transmission route, each Request seeks, in limited and identified circumstances, exceptions to the “lease area” set-back condition.

Alternative Transmission Corridor

The SFN point-of-interconnect to the regional transmission grid is within a Bonneville Power Administration (“BPA”) substation to be located adjacent to the BPA’s Slatt Switching Station. BPA has commenced construction of this substation.

In the facility’s current configuration, the electricity generated by SFN reaches the point-of-interconnect via a shared 230kV transmission system originating at the SFN substation.

Certificate Holder requests the option to reach its interconnect via a new transmission corridor. The new corridor, described in Section III of this Request, and shown on the maps in Section VIII of this Request, runs south from the SFN substation to the Shepherds Flat Central Substation, and thence to the BPA substation.

Use of the alternative corridor would result in shorter overall transmission line runs and eliminate one crossing of an existing high-voltage power line and county road.

The apparent benefits of the alternative corridor may be outweighed by other technical and timing considerations, however. Therefore, Certificate Holder requests approval of this corridor *in the alternative*—Certificate Holder proposes to construct its transmission line within its original corridor or its alternative corridor, but not both.

The option to use one or the other corridor is addressed in each of the three companion Amendment Requests. All three facilities intend to use the same corridor.

Lease Area Set-Back Exception

As discussed in Section V of this Request, Certificate Holder must maintain a minimum distance of 110-percent of maximum blade tip height from the “nearest boundary of the certificate holder’s lease area.”¹

The SFN site boundary includes a corral and landowner storage area which, for liability reasons, will be excised from the SFN lease area (please see Area A on Map 6). The excised area and the surrounding lands are under the same ownership, and landowner uses of the excised area are not incompatible with adjacent turbine placement. Certificate Holder therefore requests a specific exception to Condition 40(d) for this area. The landowner is aware of, and in agreement with, this treatment.

¹ Condition 40(d)

CERTIFICATE HOLDER INFORMATION

Name and address of certificate holder:

North Hurlburt Wind, LLC
c/o Caithness Corporation
565 Fifth Avenue, 29th Floor
New York, NY 10017

Contact person for amendment request:

Patricia Pilz
656 San Miguel Way
Sacramento, CA 95819
(916) 456-7651

PROPERTY OWNERS

CURRENT INFORMATION

<u>Owner Name</u>	<u>Mailing Address</u>
United States of America Bureau of Land Management	PO Box 550 Prineville, OR 97754
J. R. Krebs	PO Box 8 Arlington, OR 97812
Glen G. Griffith Kelly G. Griffith	76768 Hwy. 74 Ione, OR 97843
Eugene S. Logan, Jr. Jeanette C. Logan	75396 Hwy. 74 Ione, OR 97843
Skye H. & Penny M. Krebs	PO Box 413 Ione, OR 97843
Oregon Department of Transportation	417 Transportation Bldg. Salem, OR 97310
Monty L. Crum Monty Crum Ranches, LLC	PO Box 121 Ione, OR 97843
USA-Bonneville Power Administration	P.O. Box 3621 Portland, OR 97208-3621
Richard & Joanne Goodhead	7539 Hwy. 74 Ione, OR 97843
Ronald C. Harris Judith A. Harris	76044 Sullivan Road Ione, OR 97843

DESCRIPTIONS AND ANALYSIS

DESCRIPTION OF THE FACILITY

On September 11, 2009, Shepherds Flat North (“SFN”) was issued a Site Certificate for a wind energy facility to include up to 106 wind turbine generators and their associated infrastructure. Please see the Request to Amend the Site Certificate for the Shepherds Flat Wind Farm for a complete description of the facility and its components.

Changes

Certificate Holder requests an expansion of the facility site in order to accommodate an alternate transmission corridor. Option A, the existing corridor, supports a shared 230kV transmission system connecting the SFN substation to the facility interconnect.

The corridor is shared by SFN, Shepherds Flat Central (“SFC”) and Shepherds Flat South (“SFS”). Use of Option B, the alternate corridor, would change the typical layout miles of 230kV transmission line as follows:

<i>Facility</i>	<i>Option A miles</i>	<i>Option B miles</i>
SFN	4.0	5.7
SFC	5.9	3.7
SFS	<u>17.4</u>	<u>14.5</u>
Total	<u>27.3</u>	<u>23.9</u>

LOCATION OF THE FACILITY

The facility is located directly south of the Columbia River between State Highways 19 and 74. Please see the Request to Amend the Site Certificate for the Shepherds Flat Wind Farm for a complete description of the location of the facility.

Changes

Certificate Holder requests a 1,167 acre expansion of the site in order to accommodate the Option B transmission corridor. Please see Map 1.

The Option A transmission corridor runs southwest, parallel to existing transmission structures, to the point of interconnect. The Option B corridor runs south from the SFN substation to the SFC substation and then west to intersect with the Option A corridor. Please see Map 2.

Most of the Option B corridor is located within the site boundary of the previously approved SFC. Certificate Holder and the Certificate Holders for SFC and SFS have described a relatively large corridor in their companion Requests in order to allow for final substation siting. The final site boundaries for SFN, SFC and SFS will include transmission corridors limited to those areas required to support the 230kV transmission system.

8.8 acres of the Option B corridor are located on lands not previously included in any facility. These new lands measure 100 feet in width by 3,840 feet in length. Please see Map 3.

COUNCIL STANDARDS AND ANALYSIS

Applicable Council Standards and Analysis

Certificate Holder requests the option to use an alternate transmission corridor. While use of this Option B corridor requires a 1,167 acre expansion of its site boundary, all but 8.8 acres of the requested expansion are within areas previously approved for wind energy facility development as well as a transmission corridor (Site Certificates for Shepherds Flat Central and Shepherds Flat South).

Certificate Holder, therefore, has analyzed only those Council Standards applicable to the addition of these 8.8 acres within the 100 foot by 3,840 foot corridor.

Land Use

Transmission system construction within the Option B corridor will add 8.8 acres of new land. Eliminating the Option A corridor removes 12.4 acres of equivalent land in the immediate vicinity. No change in analysis of statewide planning goals is required. Please see Maps 4 and 5 for soil types and land capability classification.

Wildlife

Transmission system construction within the Option B corridor will affect 0.4 acres of habitat, vs.0.3 acres of equivalent habitat for Option A. No change in analysis of standards to protect wildlife is required. Typical footprint impacts to habitat:

Category and subtype	Site total (acres)	Option A (acres)		Option B (acres)	
		Permanent	Temporary	Permanent	Temporary
1 Raptor nest	0.162	0.000	0.000	0.000	0.000
2 Raptor nest	0.278	0.000	0.000	0.000	0.000
2 Shrub steppe – sage	33.568	0.000	0.000	0.000	0.000
3 Curlew	6467.820	0.000	0.000	0.000	0.000
3 GL	0.095	0.000	0.000	0.000	0.000
3 SS-R	48.746	0.000	0.000	0.000	0.000
3 SS-S	5.620	0.000	0.000	0.000	0.005
4 Grassland	2428.252	0.015	0.298	0.019	0.385
4 Rock and soil	64.960	0.000	0.003	0.000	0.003
5 Shrub steppe – broom snakeweed	48.483	0.000	0.000	0.000	0.000
6 Animal facility	83.487	0.000	0.000	0.000	0.000
6 Road and parking	82.640	0.000	0.002	0.000	0.002
Total	9264.111	0.015	0.303	0.019	0.395

Historic, Cultural and Archaeological Resources

The Council adopted Site Certificate Conditions 43, 44 and 45 to safeguard cultural resources, including areas not previously surveyed for cultural resources.

Site Certificate Changes

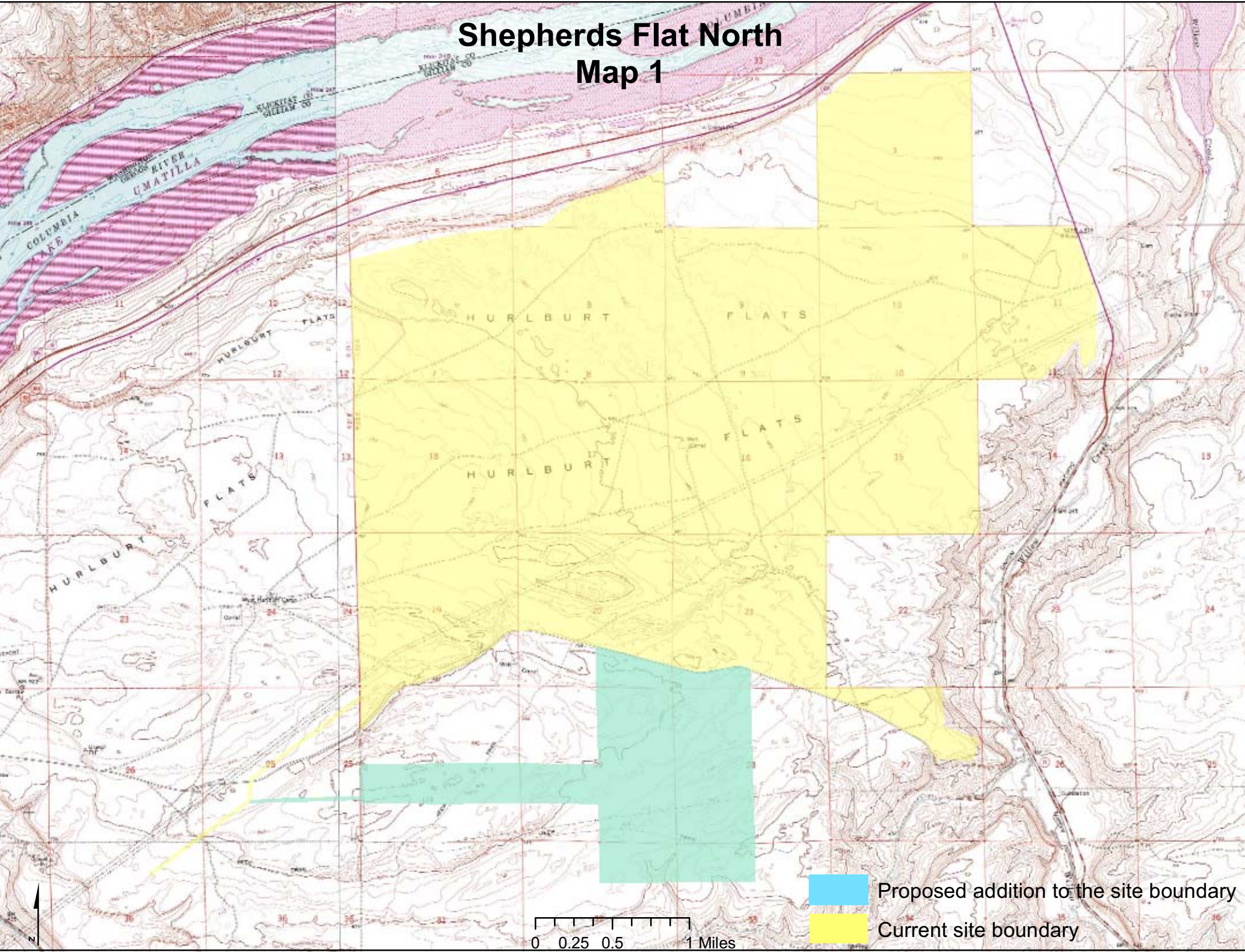
Certificate Holder proposes the following change to Condition 40(d) of the Site Certificate for Shepherds Flat North:



(d) Where (a) does not apply, the certificate holder shall maintain a minimum distance of 110-percent of maximum blade tip height, measured from the centerline of the turbine tower to the nearest boundary of the certificate holder's lease area, except that internal boundary described as "Area A" depicted on Map 6 in Certificate Holder's Request for Amendment #1.

SITE MAPS

Map 1	Expanded Site Boundaries
Map 2	Optional Transmission Corridors
Map 3	New Lands in Option B Transmission Corridor
Map 4	Soil Types
Map 5	Land Capability Classification
Map 6	Excised Area

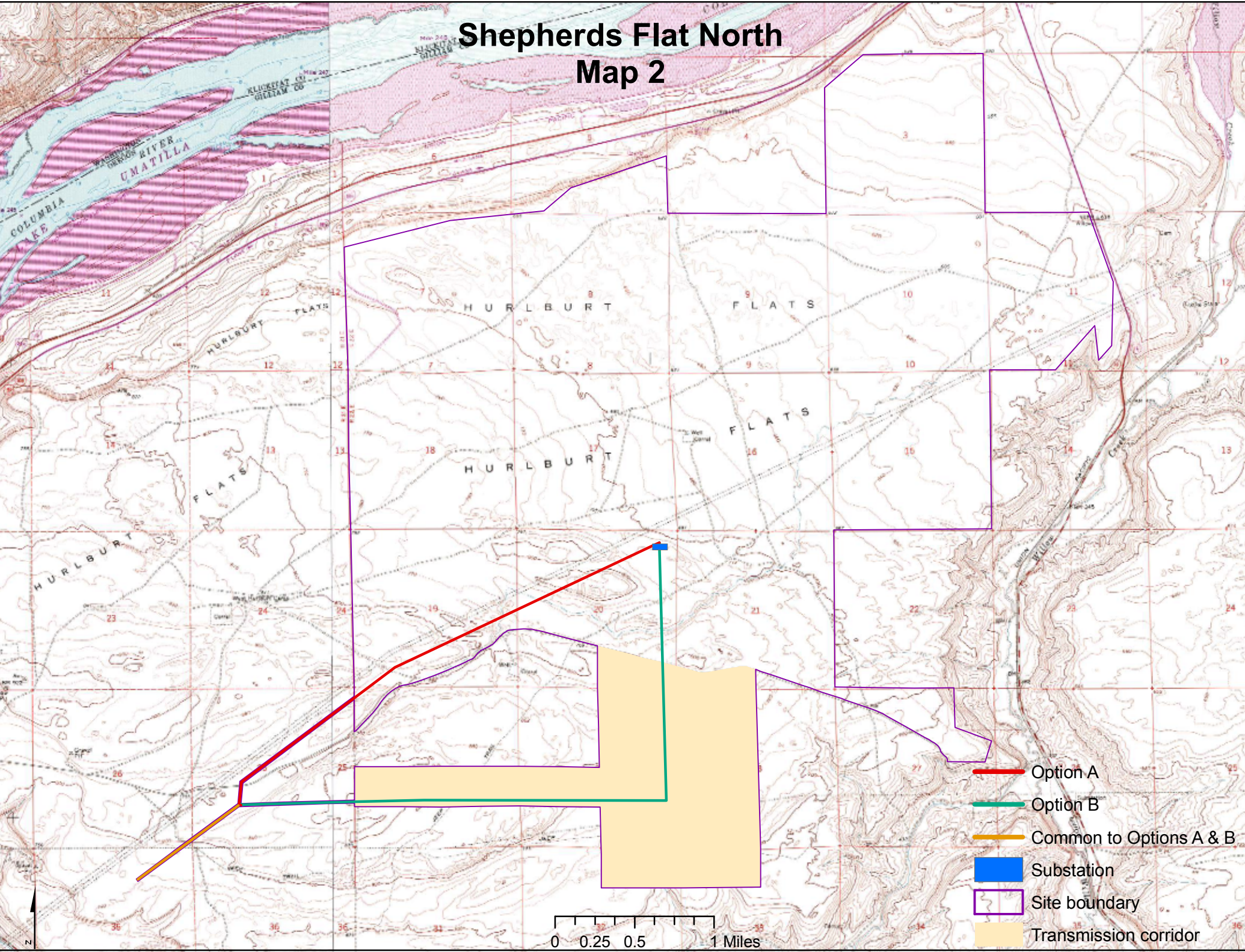
Shepherds Flat North Map 1



 Proposed addition to the site boundary
 Current site boundary

0 0.25 0.5 1 Miles

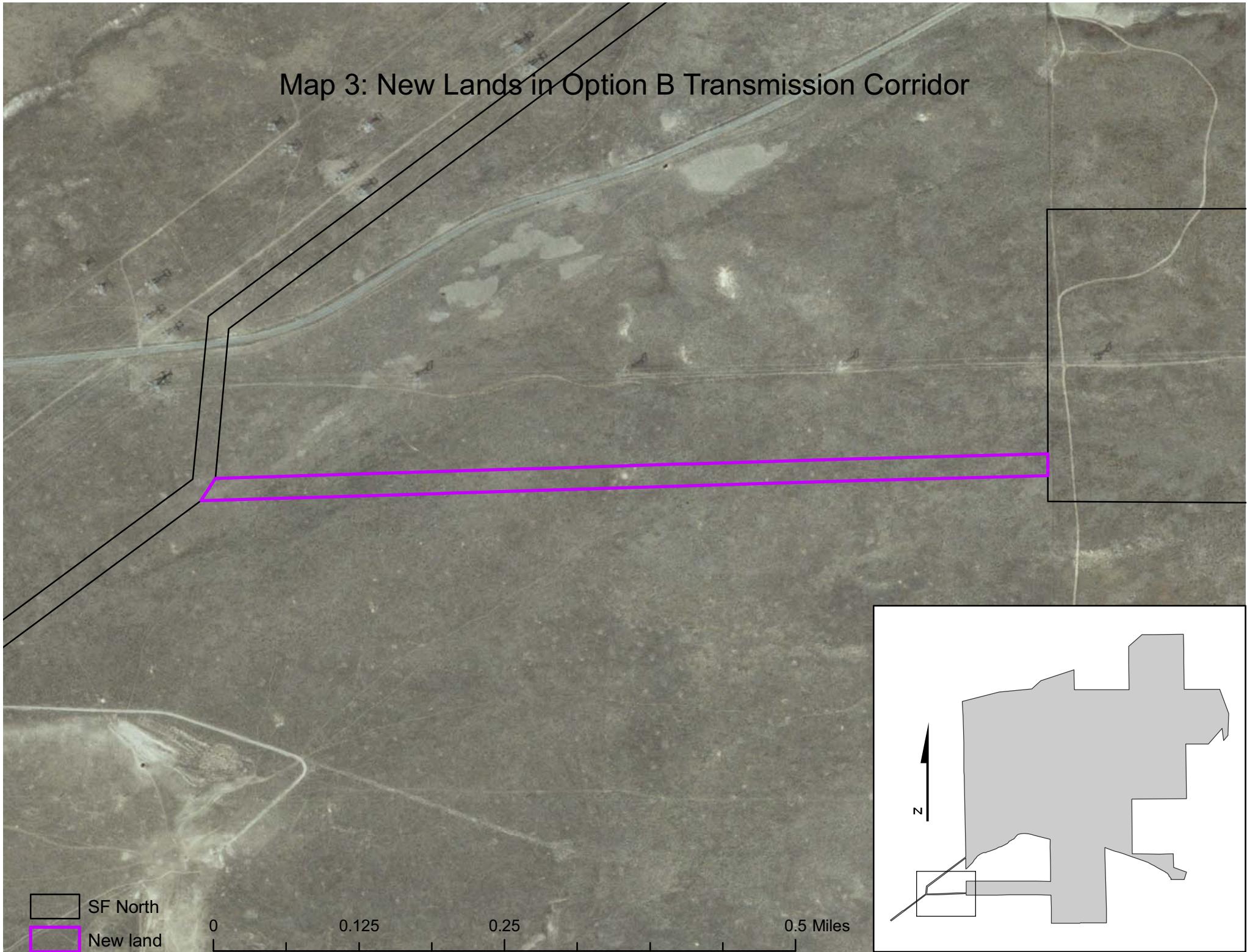
Shepherds Flat North Map 2



- Option A
- Option B
- Common to Options A & B
- Substation
- Site boundary
- Transmission corridor

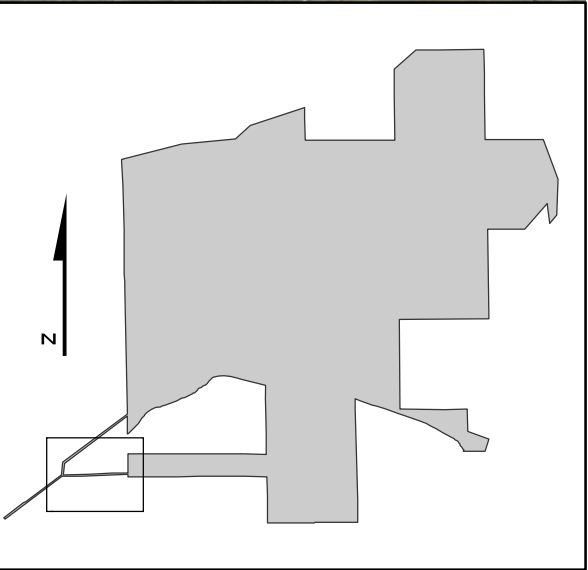
0 0.25 0.5 1 Miles

Map 3: New Lands in Option B Transmission Corridor



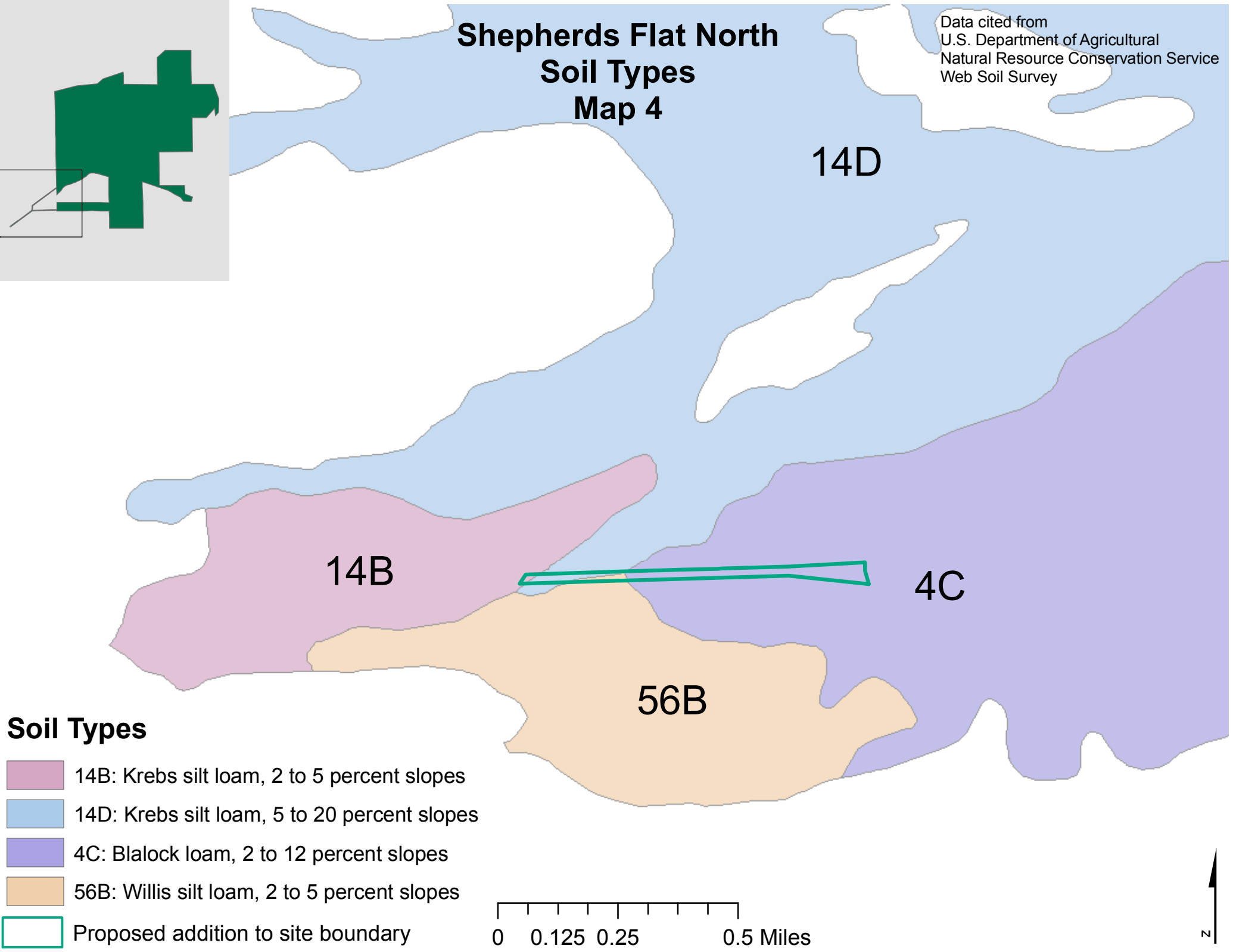
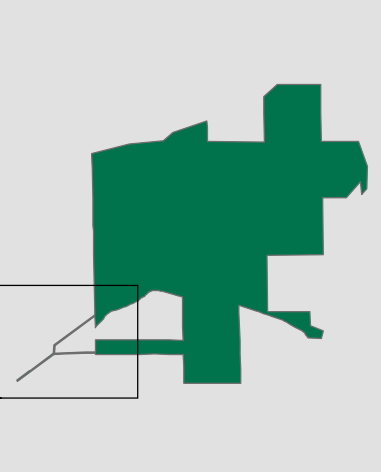
SF North
New land

0 0.125 0.25 0.5 Miles



Shepherds Flat North Soil Types Map 4

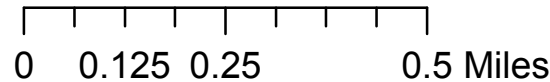
Data cited from
U.S. Department of Agricultural
Natural Resource Conservation Service
Web Soil Survey



Soil Types

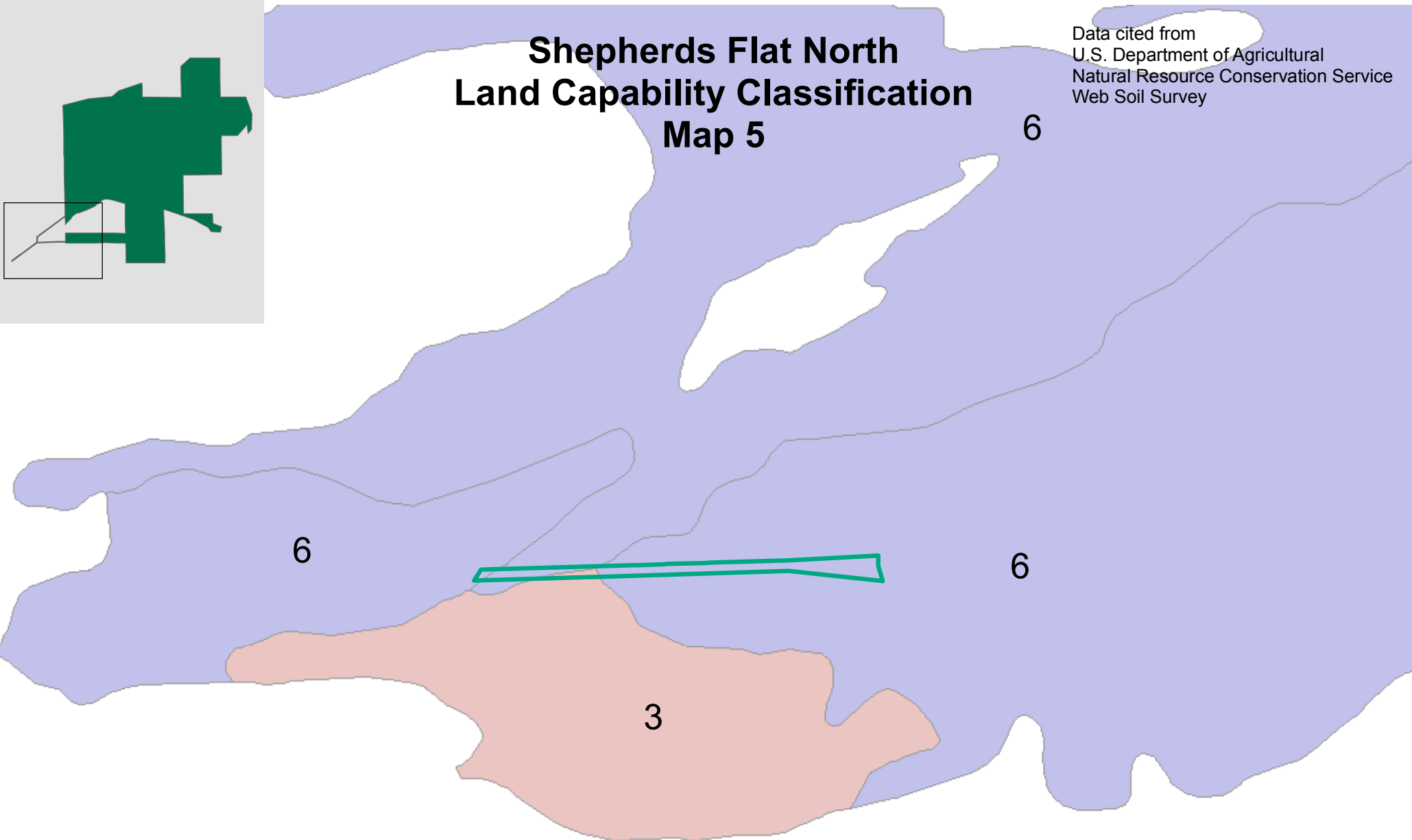
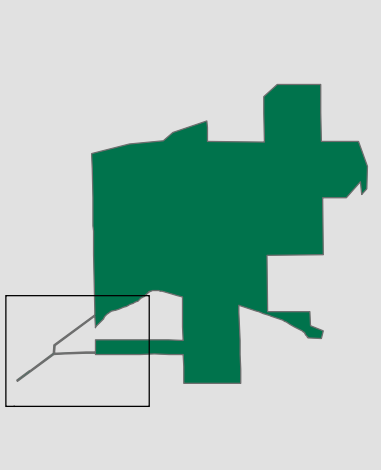
- 14B: Krebs silt loam, 2 to 5 percent slopes
- 14D: Krebs silt loam, 5 to 20 percent slopes
- 4C: Blalock loam, 2 to 12 percent slopes
- 56B: Willis silt loam, 2 to 5 percent slopes




Proposed addition to site boundary

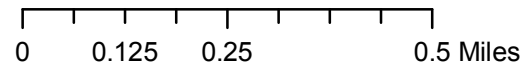


Shepherds Flat North Land Capability Classification Map 5

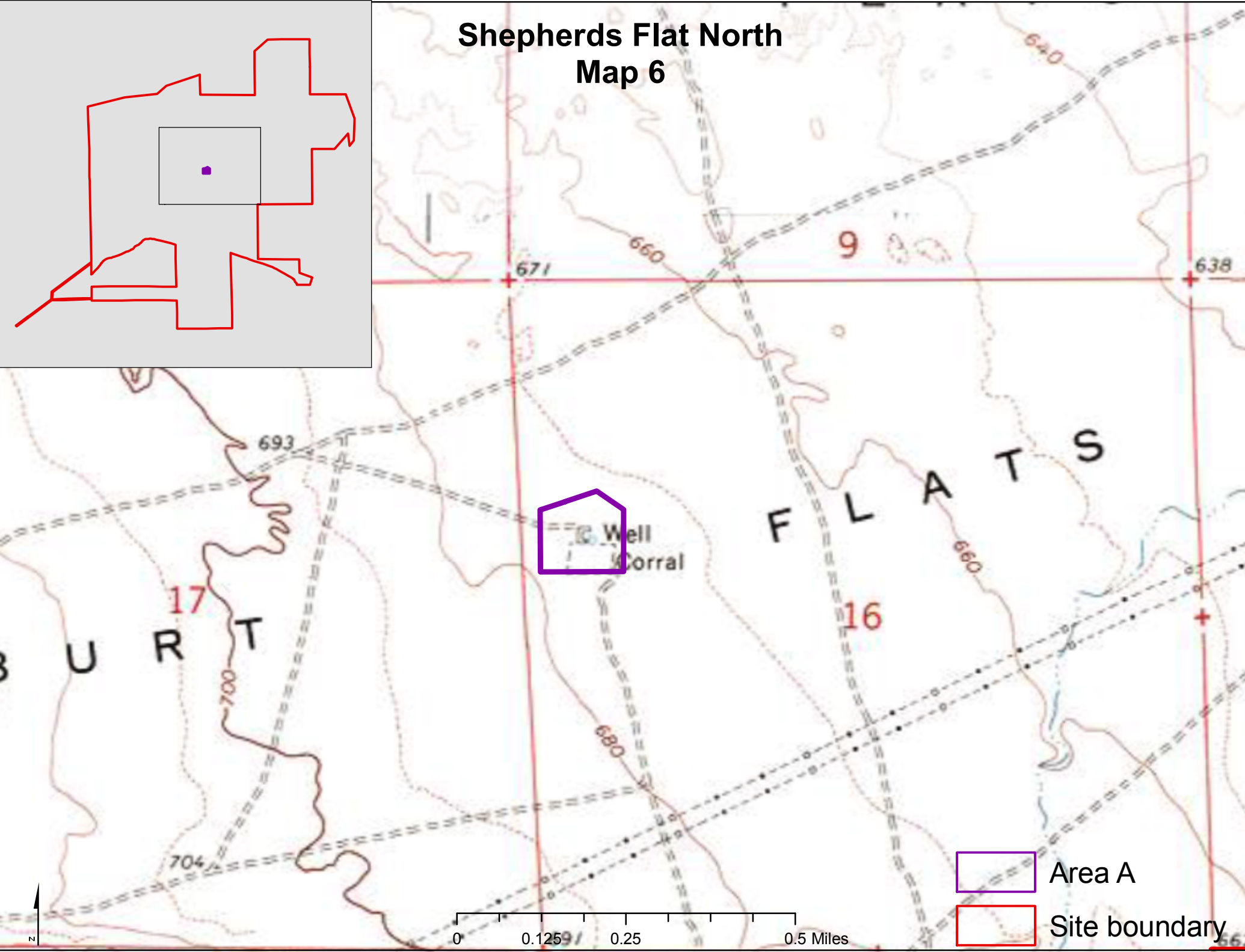
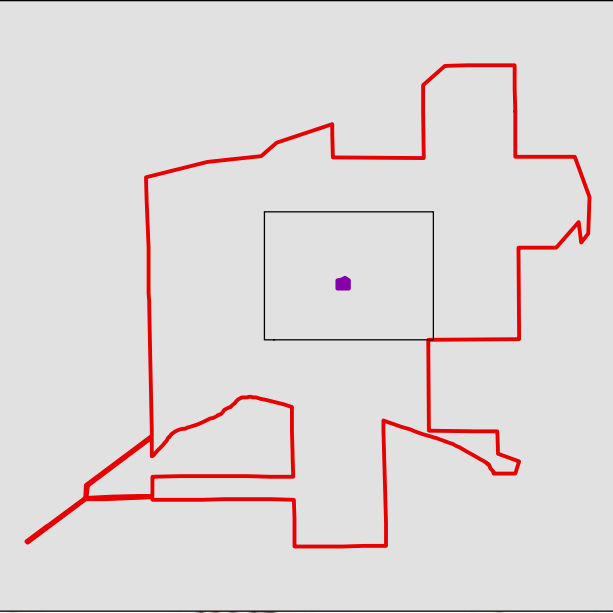
Data cited from
U.S. Department of Agricultural
Natural Resource Conservation Service
Web Soil Survey


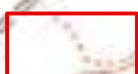


-  Land capability classification 3
-  Land capability classification 6
-  Proposed addition to site boundary



Shepherds Flat North Map 6



 Area A
 Site boundary