

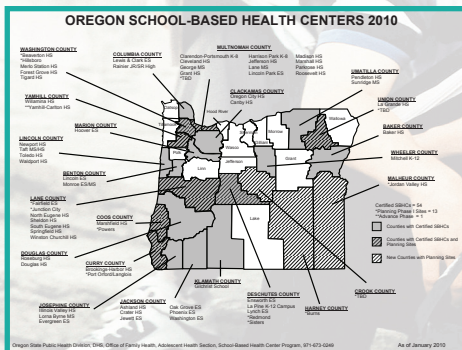
# A Pathway to Expansion: A Review of Oregon's SBHC Planning Grant Process

Robert J. Nystrom, M.A. - Rosalyn Liu, MPH



## Background

The Oregon School-Based Health Center (SBHC) State Program Office, of the Public Health Division, received funds from the State Legislature to expand the number of centers in Oregon during the last three legislative sessions. SBHC planning grants were awarded to county local public health authorities (LPHAs) based on a one-year or two-year planning process.



## Two-year planning process

Although SBHCs have been in Oregon for over 25 years, the model is new to some communities and sustainability can be challenging. The two year planning process focuses on education, relationship building and community readiness as key factors towards success of a center.

**Planning Year 1 (Phase I):** Local planning committees educate partners and community members on Oregon's SBHC model. The goal at the end of year one is to demonstrate progress and determine the level of community support and ability to meet State Certification Standards during year two. By the end of Phase I, grantees should have identified a site location, engaged potential medical sponsors, and developed a strategic plan and budget for Phase II.

**Planning Year 2 (Phase II):** Begin renovation/construction of the site. Planning groups work with partners to develop memorandums of understandings and policy and procedures, recruit clinic staff and participate in ongoing marketing of the SBHC. The center should be open and operating by the Spring of year two and certified by the end of the school year.

## One-year planning

**Advance Phase:** For the first time in 2009, the state program office offered an option to apply for a one-year fast track planning grant. The one-year option was designed for sites that can demonstrate superior readiness either as a previously unsuccessful grantee or a community that has been planning independent of state planning grants.

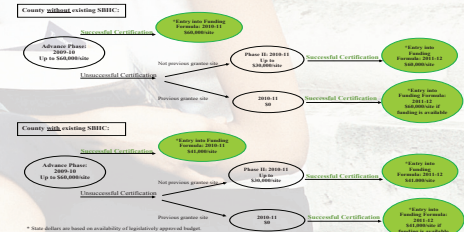
## Funding

State planning grant dollars are awarded to LPHAs in an effort to better align SBHCs with public health's mission, delivery system and ongoing support. The goal of planning is to become a state certified SBHC. Once certified, the center enters into the State Funding Formula.

**OPTION 1: Two Year SBHC Planning Process**  
Previously awarded planning grantee sites are ineligible for this option.



**OPTION 2: One Year SBHC Planning Process**  
Option available to any site.



## SBHC State Funding Formula

State dollars are based on availability of legislatively approved budget.

- 1 Certified SBHC in County ----- LPHA receives \$60,000/yr
- > 1 Certified SBHC in County ----- LPHA receives \$41,000/yr for each certified center

## 2-year Planning Timeline for 2009 - 2011 Planning Grantees

