

OREGON SBHC COORDINATORS MEETING

Michael Ralls

Director of Social Services

North Clackamas School District

October 6, 2017

A LITTLE ABOUT ME

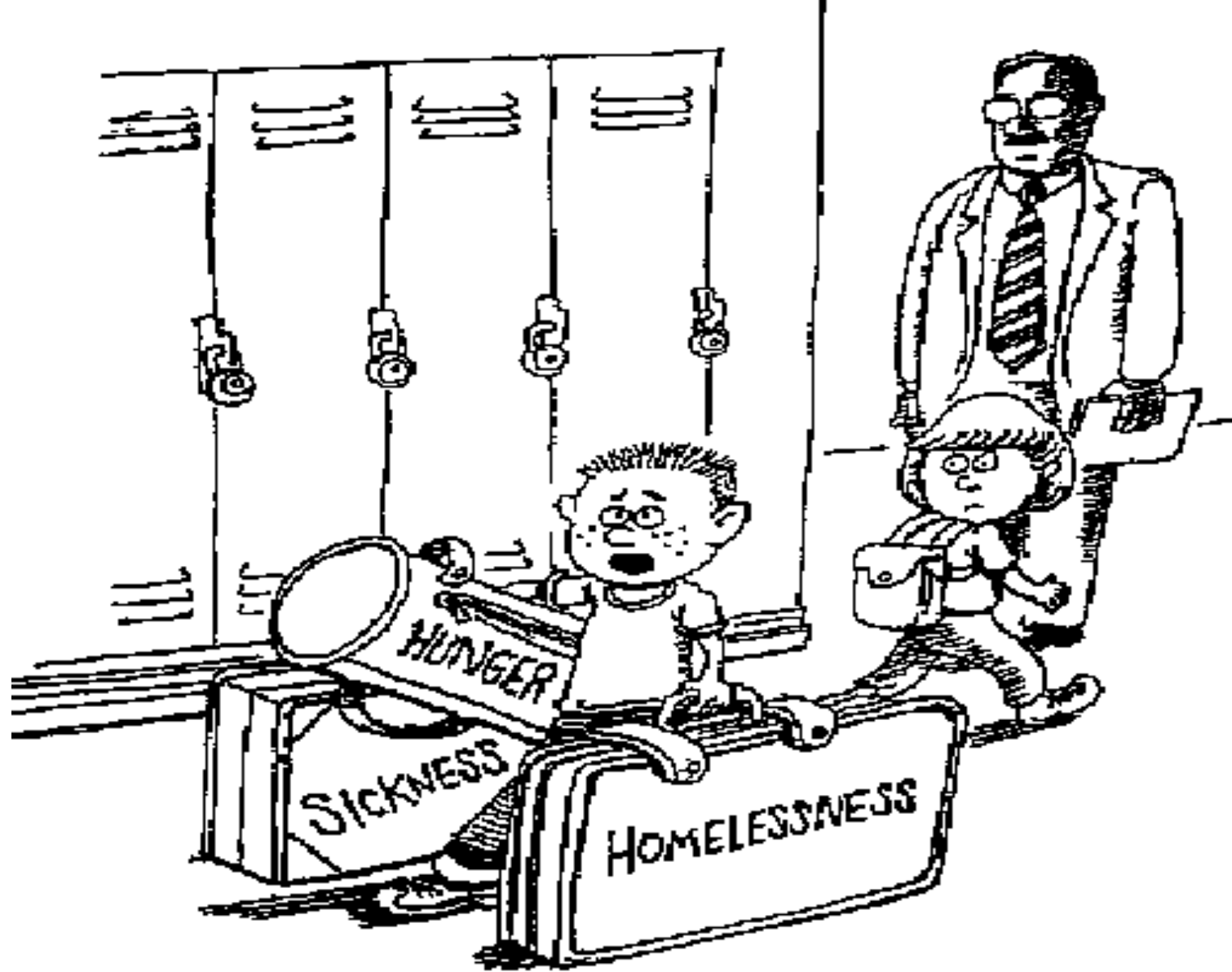
English Teacher

Counselor

School Building Administrator

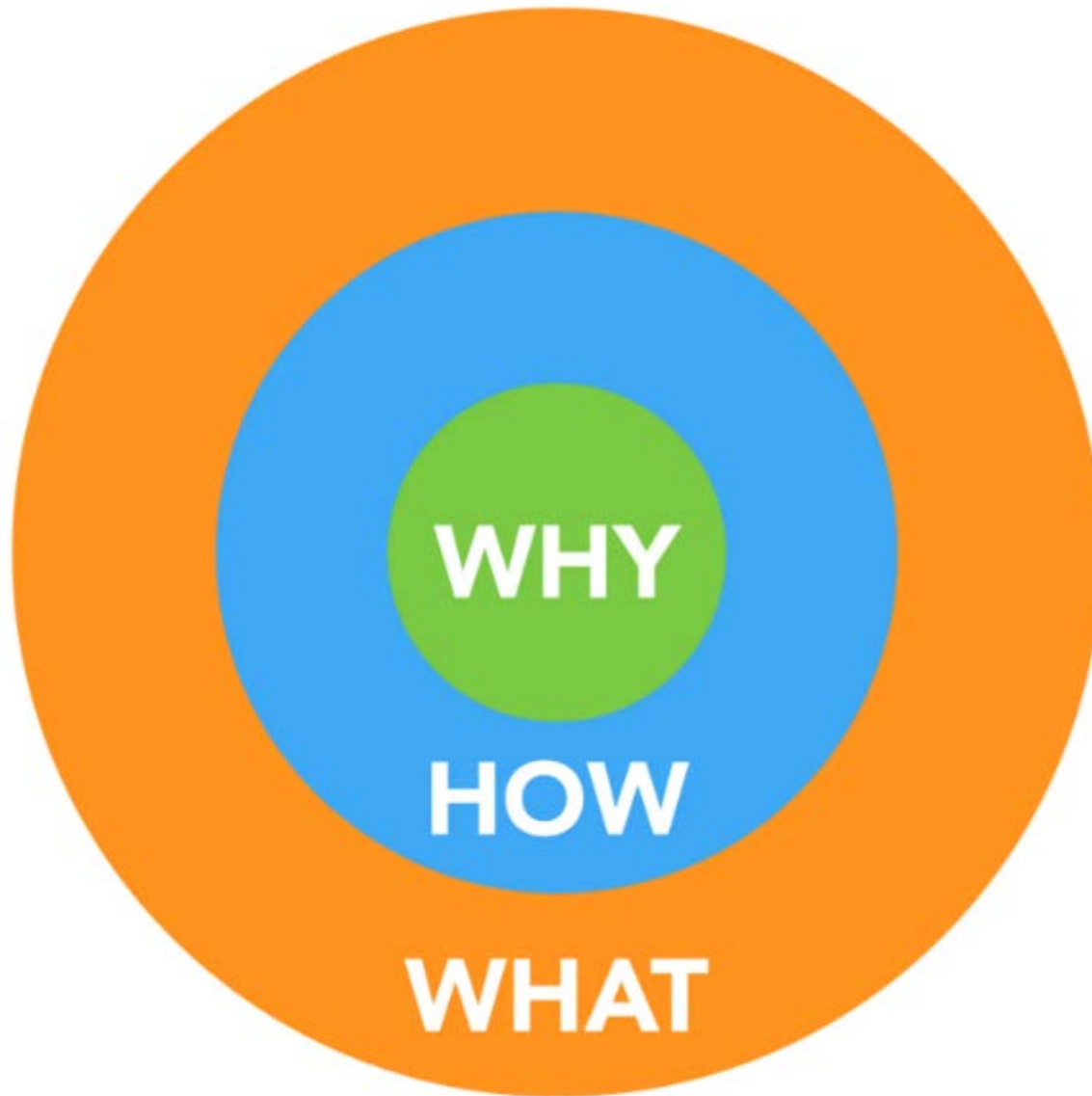
District Director of Social Services

Three parallel white lines of varying lengths and slopes are positioned in the bottom right corner of the slide, extending from the right edge towards the center.



*Could someone please help me with these?
I'm late for Math class.*

Sinek's Golden Circle



WHY

Inspiration, Driving Purpose, Fueled by Core Values + Beliefs

HOW

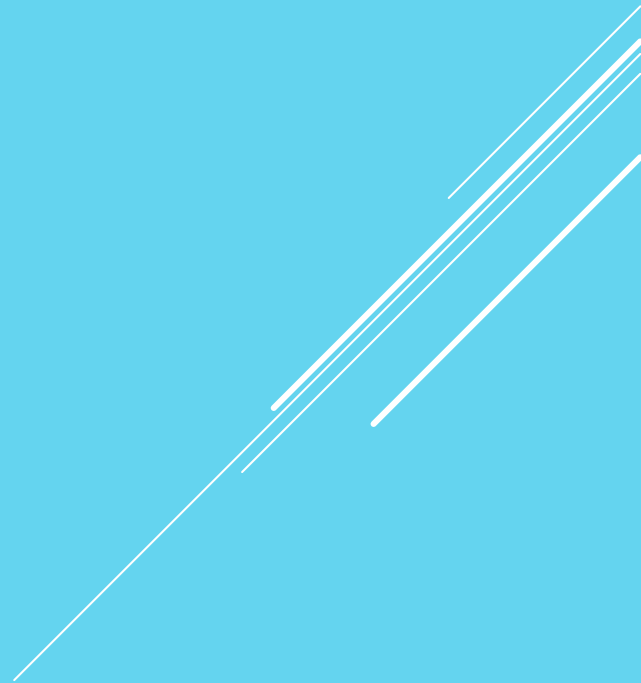
Unique Method, Competitive Advantage

WHAT

Activity or Offering



my
“WHAT”

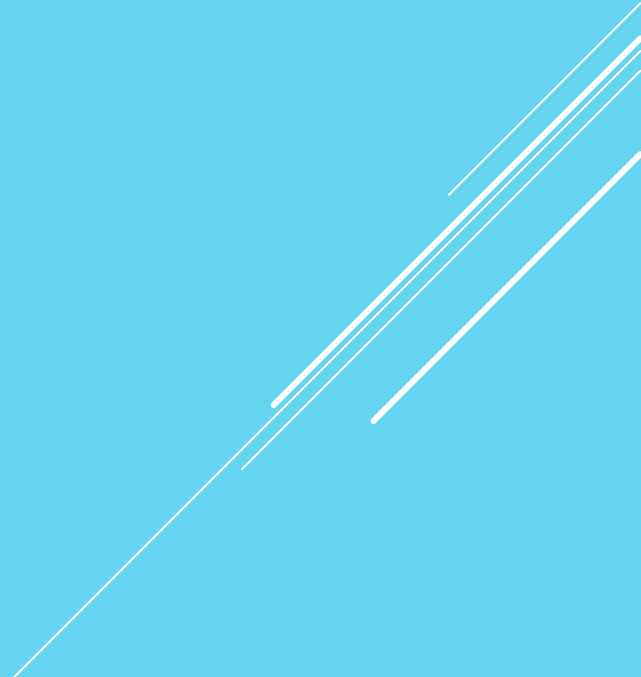


ABOUT MHS

- ▶ **1400 Students**
- ▶ **Comprehensive Public High School**
- ▶ **62-70% Free and Reduced Lunch**
- ▶ **School Founded in 1909**
- ▶ **33% minority (28% Latino)**
- ▶ **School District has 18,000 students**
- ▶ **Suburb of Portland**



SUCCESS

- ▶ **Graduation rates went up.**
 - ▶ **Achievement gap closed between Hispanic and white students.**
 - ▶ **Community involvement increased.**
 - ▶ **Communication with the community improved.**
 - ▶ **Over 50 partnerships built.**
 - ▶ **Latino parent group created.**
 - ▶ **Instructional leaders team started.**
 - ▶ **Health Center is open full-time.**
 - ▶ **...AND MORE**
- 
- A series of three parallel white diagonal lines extending from the bottom right towards the top right of the slide.

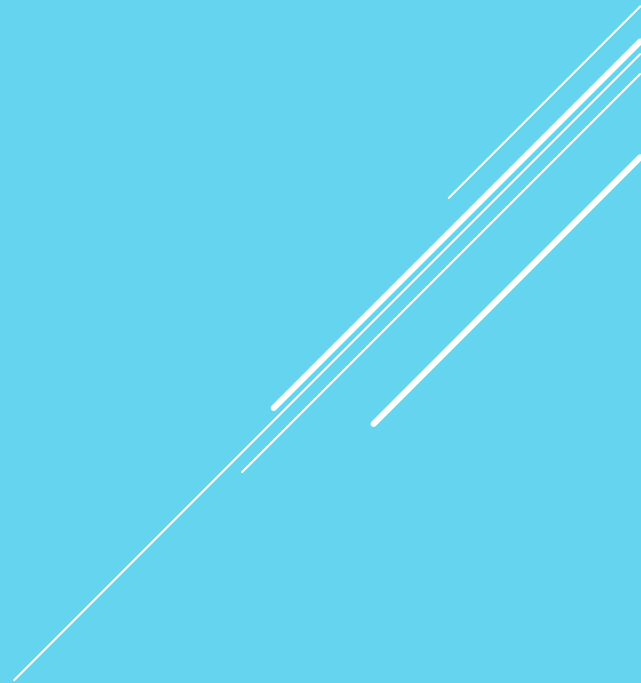


Milwaukie High School

Achievement DATA

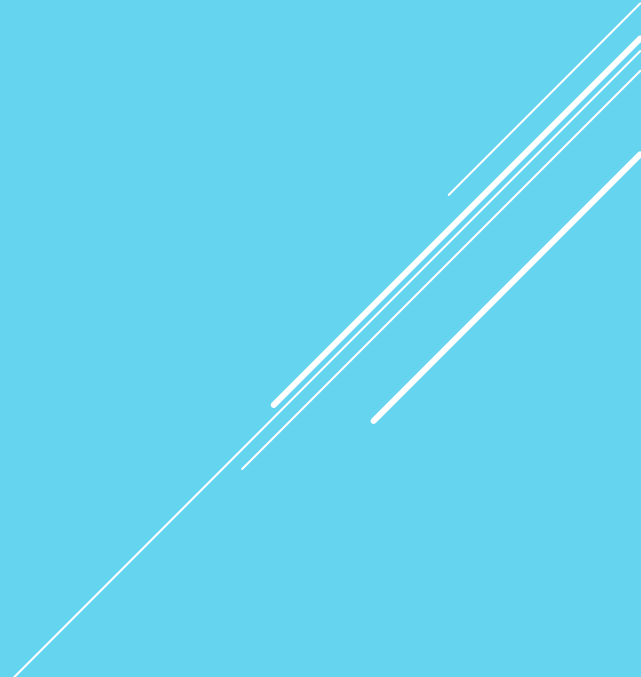
	<u>2006</u>	<u>Six Years Later</u>
Reading	55.1%	Increased 25.7%
Math	38.5%	Increased 34.6%
Writing	47.6%	Increased 19%
Attendance	87%	Increased 6%
Graduation	63.5%	Increased 10.5%
ODE Rating	“Needs Improvement”	“Outstanding”

my
"HOW"



COMMON GROUND

We BOTH want students to...

- ▶ be physically and mentally healthy
 - ▶ not be hungry
 - ▶ feel safe at school
 - ▶ achieve at a high level
 - ▶ be ready for college & career
 - ▶ be able to contribute to community
- 
- A series of three parallel white diagonal lines in the bottom right corner of the slide.

WHAT SBHC'S NEED TO KNOW ABOUT SCHOOLS

- ▶ Schools are skeptical of people who want to “help.”
- ▶ Schools don't understand the world of health.
- ▶ Schools need you to tell them how to meet your needs.
- ▶ Schools run on a School Calendar.
- ▶ Schools won't understand HIPPA/FERPA.
- ▶ Schools might need help with confidentiality.

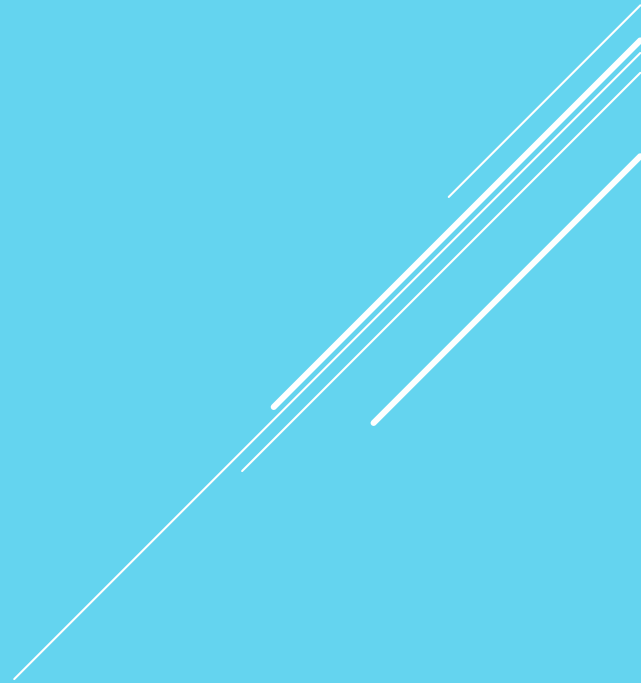
WHAT SCHOOLS NEED TO KNOW ABOUT SBHC'S

- ▶ You won't know the "informal systems".
- ▶ You need an on-site Champion.
- ▶ Schools may need to restructure systems to support You (call slip, referral form, etc.).
- ▶ You may need to have billable visits.
- ▶ We might need an MOU.

THINGS TO THINK ABOUT

- ▶ What needs of the school can you meet?
- ▶ How can you support the achievement of students?
- ▶ How does your presence meet the school's goals?
- ▶ What can you do to build trust with the administration and school staff?
- ▶ What common language can you develop with the administration to address parent concerns?

It's About Relationships



TOP 3 PRINCIPAL PRIORITIES

- ▶ **Student Achievement.**
- ▶ **Student Safety.**
- ▶ **Instructional time.**
- ▶ **Equity.**
- ▶ **State Test Scores.**
- ▶ **Discipline Referrals.**
- ▶ **Budget.**
- ▶ **Staff Relations.**
- ▶ **Common Core State Standards.**
- ▶ **Personal Learning Standards.**
- ▶ **SPED Behavior Classrooms.**
- ▶ **Smarter Balance Assessment.**
- ▶ **Meeting Unfunded Mandates.**
- ▶ **PLC's.**
- ▶ **Communication.**
- ▶ **.....AND MORE**

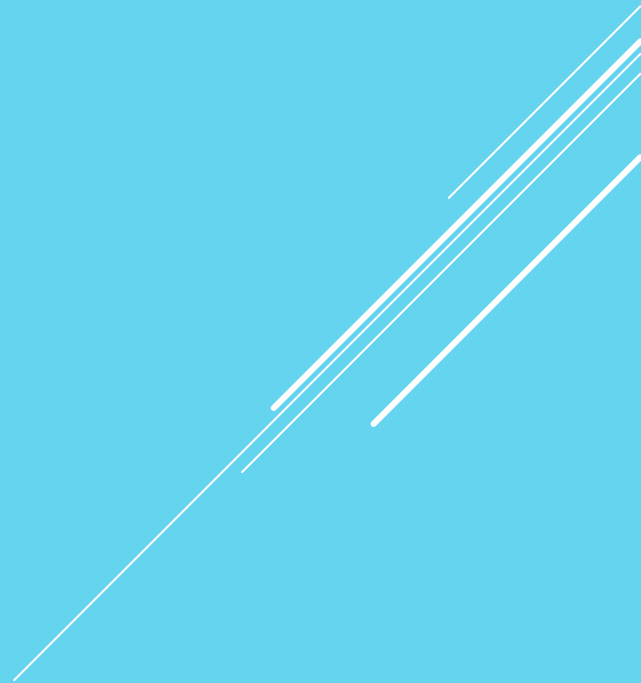
HOW CAN YOU BUILD A RELATIONSHIP?

- ▶ If the principal has a relationship with you, the school has a relationship with you.
- ▶ Become a part of the staff (staff functions, staff meetings, etc.).
- ▶ Communicate frequently. Every communication is building a relationship.
- ▶ Key school staff are Head Secretary, Head Custodian, Counseling Secretaries, etc.
- ▶ Donuts go a long way. (or fruit?)

Social Services Model @ NCSD

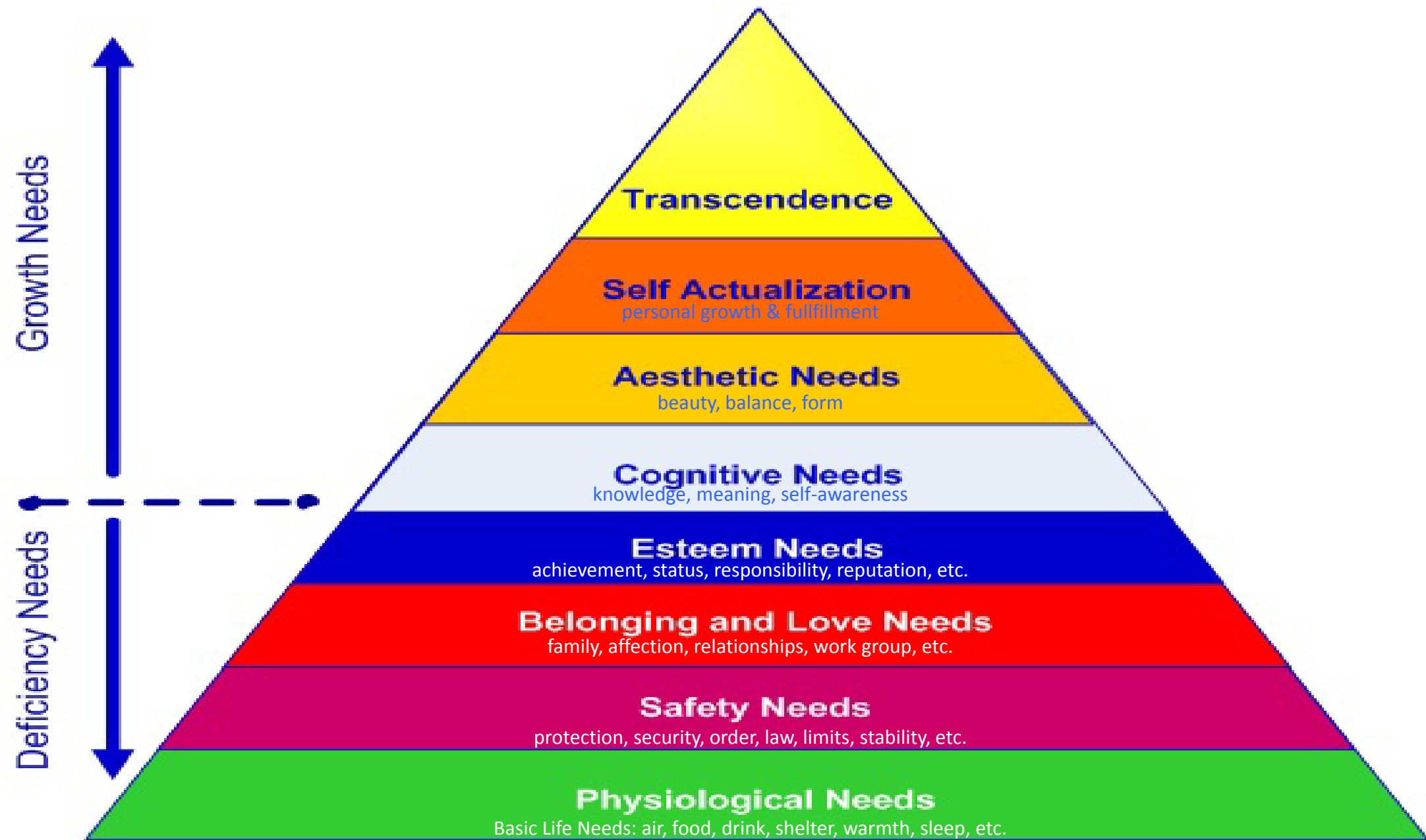
School Counselors	School-Based Health Centers	Mental Health	Wichita Center for Family & Community	Food Support	Dental Health	Expanded Learning	School Social Workers
Mission: To assist in meeting and enhancing students' social, emotional, academic and career development.	Mission: To support a School-Based Health Center in each High School serving all students within the feeder system.	Mission: To identify and treat mental health conditions of students by providing services within the school, during the school day.	Mission: To support students and families in the NCSD community with the basic needs of food, clothes, and homeless services.	Mission: To offer resources year-round to all NSCD families who are food insecure.	Mission: To improve the culture of dental health within each school community and improve the access to dental health services for students who participate in the Oregon Health Plan.	Mission: To offer students activities, and leadership opportunities beyond the school day.	Mission: To advocate for children and families working within the student's home, school, and community, collaborating with other educational and community professionals.
Why: Counselors provide support and foster student development as children learn to live, learn, and work.	Why: School-based health centers found that medical services helped decrease absences by 50% among students who had three or more absences in a six-week period; students who received mental health services had an 85% decline in school discipline referrals.	Why: Half of individuals living with mental illness experience onset by the age of 14. This number jumps to 75% by the age of 24. Over half of the adolescents in the United States who fail to complete their secondary education have a diagnosable psychiatric disorder.	Why: Research shows that Family Resource Centers prevent child abuse and neglect, improve a child's overall health, prepare children to be successful in school, promote family engagement and build parenting skills.	Why: In Oregon, 25.9% of kids live in households with food insecurity. Research shows that 1 in 5 U.S. kids don't get the food they need. 16 million kids in the United States struggle with hunger.	Why: Children are the most vulnerable to economic disparities and other obstacles to accessing dental care and cannot make decisions for their own well-being.	Why: Studies have found a variety of non-academic family and student support approaches to be associated with academic success. Several programs found enrichment programs consistently related to academic improvements (Greene & Anyon, 2010).	Why: School Social Workers improve the social and psychological functioning of children who are at risk for school failure due to the influences of poverty, race, immigration, poor English language skills, parents with lack of education, or family members with health problems.
Key Performance Measures: Ratio Elem: 631 Ratio MS: 462 Ratio HS: 396 Ave PD hrs: 22	Key Performance Measures: 1085 served @ MHS 739 unique students 62 appointments @ PHS	Key Performance Measures: \$1.6 million in-kind services provided to NSCD students	Key Performance Measures: 1460 families served 3080 visits for food 1762 children served	Key Performance Measures: 3500 Food Pantry visits Backpack Buddies serves 900+ every weekend	Key Performance Measures: 1085 elementary students screened 296 needed immediate care	Key Performance Measures: 550 CARE Program enrollment 280 Summer enrollment	Key Performance Measures: 623 homeless served TBD
Needed: Full-time counselors in each elementary school to support our vulnerable students with needed school counseling services.	SBHC Sites: Milwaukie High Putnam High (pending) Clackamas High (TBD) New High School	Service Delivery Partners: Outside In Trillium Family Services Western Psychological Volunteers of America Northwest Family Serv.	Services Delivered: Homeless Resources Food Pantry Clothes Closet Housing Referrals Social Service Referrals	Services Delivered: Wichita Food Pantry Harvest Share Rowe Foodfor Success Backpack Buddies Summer Food Program Winter Food Drive	Service Delivery Partners: Neighborhood Health D3 NCSD Dental Health Solutions Outside In	Service Delivery Partners: Metropolitan Family Services CAFE Program NCSD CARE Program Boys & Girls Club	Needed: The addition of three full-time School Social Workers to support and connect our vulnerable students to needed social services.

my
“WHY”




As an educators,
if we take care of kids,
we can be more successful at
educating kids, giving them more
opportunities to improve their life.

Maslow's Hierarchy of Needs



There is a research-based link
between students'
physical, social, and emotional
health
and their ability to learn.

Several thin, white, parallel diagonal lines are positioned in the bottom right corner of the slide, extending from the right edge towards the center.



Remember:

Start with the
“WHY”

Several thin, parallel white lines are drawn diagonally across the bottom right corner of the slide, adding a modern, graphic touch.

What's your
“WHY”

Three thin, parallel white lines are positioned in the bottom right corner of the image, extending diagonally from the bottom edge towards the right edge.

Thank you.

Three parallel white lines of varying lengths are positioned in the bottom right corner of the image, slanted diagonally upwards from left to right.